

President's Report



Josh DeWees
President/CEO

2026 rates

Due to rising costs for fuel and materials, the Cooperative will be making adjustments to electric rates. This change is necessary to continue providing safe and reliable service to our members.

Beginning with the April billing cycle (received in early May), members will see a \$5.00 increase in the monthly line access

charge, a \$0.01 increase on every kilowatt-hour used and the current wholesale power adjustment will be incorporated into the purchased energy cost.

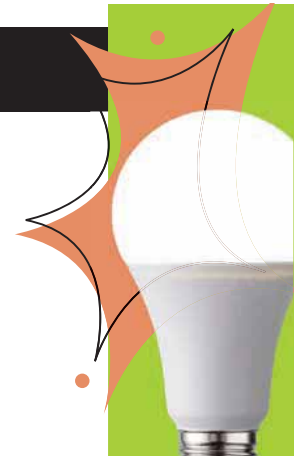
We remain committed to keeping your power reliable and affordable while continuing to serve our rural communities. If you have any questions, please do not hesitate to contact us.

2025		2026	
Distribution Costs	Bill Example	Distribution Costs	Bill Example
Line Access Charge	\$70.00	Line Access Charge	\$75.00
Delivery Charge <=800: Rate 0.0000 x 800	\$0.00	Delivery Charge <=800: Rate 0.010 x 800	\$8.00
Delivery Charge >800: Rate 0.0200 x 400	\$8.00	Delivery Charge >800: Rate 0.030 x 400	\$12.00
Purchased Energy Cost		Purchased Energy Cost	
TRANSMISSION: Rate 0.016 x 1200	\$19.20	TRANSMISSION: Rate 0.03 x 1200	\$36.00
FIXED ENERGY: Rate 0.04 x 1200	\$48.00	FIXED ENERGY: Rate 0.045 x 1200	\$54.00
VARIABLE ENERGY: Rate 0.0493 x 1200	\$59.16	VARIABLE ENERGY: Rate 0.048 x 1200	\$57.60
WHOLESALE POWER ADJ: Rate (variable)x1200	\$21.00	WHOLESALE POWER ADJ: Rate (variable) x 1200	\$0.00
Other Charges		Other Charges	
ENERGY ASSISTANCE	\$0.45	ENERGY ASSISTANCE	\$0.45
STATE TAX (.0032/kWh)	\$3.84	STATE TAX (.0032/kWh)	\$3.84
OPERATION ROUND-UP	\$0.35	OPERATION ROUND-UP	\$0.11
	\$230.00		\$247.00

ENERGY EFFICIENCY TIP OF THE MONTH

As we prepare for the seasonal shift, remember to set your ceiling fan rotation accordingly. In winter months (or whenever your home heating system is running), fan blades should rotate clockwise, which produces an updraft that pushes warm air down. In summer months (or whenever your home cooling system is running), blades should rotate counterclockwise, which produces a downdraft or windchill effect that makes you feel cooler. When used correctly, ceiling fans can boost comfort and allow you to adjust the thermostat a few degrees for energy savings.

Source: energy.gov



GOOD FRIDAY

We will be closed April 3 in observance of Good Friday.

Spoon River Electric Cooperative

930 South Fifth Ave, PO Box 340,
Canton, IL 61520
8:00 a.m. – 4:30 p.m.
309-647-2700 • www.srecoop.org

President/CEO

Josh DeWees
jdeweess@srecoop.org

Chairman

Bernard Marvel, Browning

Vice Chairman

Wesley Strode, Marietta

Secretary

Jack Clark, Lewistown

Treasurer

JoDee Pedigo, Canton

Board of Directors

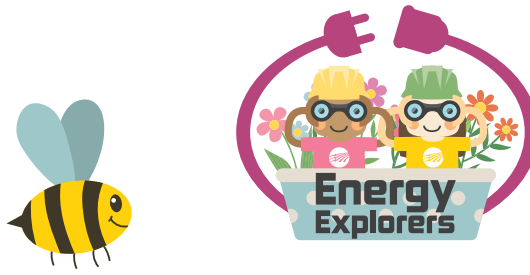
Gary Bowman, Maquon
Joe Davis, Canton
John Disharoon, Cuba
Kurt Duncan, Lewistown
Dan Williams, Smithfield

Editor of Spoon River News

Taryn Mellert
tmellert@srecoop.org

Spoon River Electric Cooperative – By the Numbers

Miles of line energized: 1,272
Number of members served: 5,022
Number of power poles
in territory: 29,361



SPRING SAVINGS WORD SEARCH

Are you ready to *spring* into energy savings? When we actively try to reduce our energy use at home, we save on bills and help our community. Read the efficiency tips below, then search for (and circle) the **bolded** words in the puzzle.

Spring Energy Tips:

Unplug chargers, gaming systems and other devices.

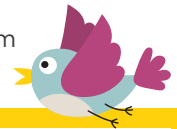
Electronics can consume **energy** when they're plugged in, even if you're not using them.

Open curtains and blinds during the day to use **natural light** instead of lamps and other home lighting.

Dress for the weather. When it's chilly, grab a **jacket** instead of turning up the **thermostat**.

When it's warm, instead of turning on the A/C, open **windows** or turn on fans to circulate air.

Turn off **lights** when you're leaving the room for more than five minutes.



L	J	E	X	L	K	W	E	N	U	Y	Y	K	U	O
W	H	A	I	K	G	Q	O	B	Z	G	S	V	X	G
V	U	Q	C	U	X	B	K	P	M	R	O	T	E	Y
B	Y	Z	L	K	E	C	C	F	O	E	B	Y	L	N
U	M	P	K	X	E	O	N	X	W	N	Z	A	W	G
O	N	I	F	X	O	T	Y	M	D	E	I	W	I	J
U	I	Z	E	W	F	O	M	T	K	D	M	F	N	U
W	T	K	U	C	C	K	L	Y	X	O	J	S	D	O
F	N	A	T	U	R	A	L	L	I	G	H	T	O	I
M	I	A	D	A	N	S	B	T	J	P	V	N	W	P
O	N	N	O	D	Z	W	T	Q	Z	M	O	A	S	L
T	A	T	S	O	M	R	E	H	T	L	T	D	H	M
M	L	O	H	G	W	P	W	Z	G	S	O	B	Y	T
L	W	I	Y	Z	U	N	Y	A	B	I	P	N	J	I
C	L	W	Q	Z	L	N	X	G	D	P	L	B	B	V





Chairman Bernard Marvel (center) presenting Director John Disharoon (left) and Director Joe Davis (right) their CCD certificates.

Spoon River Electric Cooperative directors achieve credential in today's electric utility competencies

Two directors from Spoon River Electric recently received the Credentialed Cooperative Director certificate from the National Rural Electric Cooperative Association (NRECA).

An ever-changing business environment has imposed new demands on electric cooperative directors, requiring increased knowledge of changes in the electric utility business, new governance skills and a solid knowledge of the cooperative principles and business model. Electric co-ops in Illinois have a commitment to work through the Association of Illinois

Electric Cooperatives and NRECA to sharpen this body of knowledge for the benefit of their electric cooperative consumer-owners.

The NRECA Credentialed Cooperative Director (CCD) program requires attendance and demonstrated understanding of the basic competencies contained in five core courses:

- Director Duties and Liabilities
- Understanding the Electric Business
- Board Operations and Process
- Strategic Planning
- Financial Decision Making

Tyler Girard completed his Lineman Apprenticeship

In October of 2025, Tyler Girard completed his Lineman Apprenticeship with Spoon River Electric. From groundman to Journeyman Lineman, his journey is a true example of hard work and dedication paying off. His achievement highlights the skill, discipline and perseverance required to succeed in our industry.



Pictured: Josh DeWees, CEO, Tyler Girard and Bill Sego, Distribution Supervisor

When the lights go out, lineworkers are ready to answer the call, day or night, to safely restore power and keep our communities moving forward. They take pride in powering the places we call home. Today and every day, we thank lineworkers for their service and commitment.

**Lineworker Appreciation Day
April 13, 2026**





ATTENTION 2025-2026 SENIORS!

Spoon River Electric Cooperative is Awarding Four \$1,000 Scholarships to High School Seniors

High school students who are seniors during the 2025-2026 school year, and are the son or daughter of a Spoon River Electric member are eligible to apply for a \$1,000 Scholastic Scholarship, a \$1,000 Honorary Scholarship, the \$1,000 Scott Parrish Memorial Scholarship, and the \$1,000 Terry Beam Memorial Scholarship, which will be awarded at this year's Annual Meeting on June 4, 2026.

Applications must be turned in by May 8, 2026 to be considered. Official rules and descriptions of scholarships below.

OFFICIAL RULES

- **Applying students and their parent/legal guardian must be present at the Annual Meeting, June 4, 2026 to win.**
- Students must be a son or daughter of a Spoon River Electric Cooperative Member.
- Students must be a high school senior during the 2025-2026 school year and begin college undergraduate studies in the 2026-2027 school year. Students must plan on attending a two-year or four-year accredited college or university, including vocational/technical schools.
- Scholarship winners must be full-time students (at least 12 hours) during the 2026-2027 academic year.
- Scholarships are for one year and are non-renewable.
- Past Spoon River Electric Cooperative scholarship winners are not eligible.

SCHOLASTIC, SCOTT PARRISH MEMORIAL & TERRY BEAM MEMORIAL SCHOLARSHIPS

- The Scholastic and Scott Parrish Memorial Scholarships will be awarded based on an application detailing GPA, college entrance test scores, work and volunteer experience, participation in school and community activities, and a biographical statement.
- The Terry Beam Memorial Scholarship will be awarded to a student pursuing a vocational trade program.
- Finalists will be notified by phone or e-mail with a time and place for a personal interview.
- Those not chosen as finalists for the Scholastic and Parrish Scholarships will be automatically placed in the Honorary Scholarship drawing.

HONORARY SCHOLARSHIP

- The Honorary Scholarship will be awarded by a drawing as students are recognized at the Annual Meeting.
- All applicants are eligible for the Honorary Scholarship drawing except the Scholastic, Parrish & Beam Scholarship winners.



Scholarship Participation Request

Name of Student _____

Address of Student _____

Name of Parent/Guardian _____

Telephone Number _____

**Return To: Taryn Mellert
Spoon River Electric Cooperative
PO Box 340
Canton, IL 61520
647-2700**

Applications can also be found online at: srecoop.org/scholarship