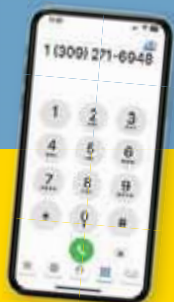


President's Report



Josh DeWees
President/CEO



Make a payment
24/7!

Call: 309-271-6948

Lineworkers are wired for service

In the quiet hours before dawn breaks, while many of us are still nestled in our beds, lineworkers begin their day, often clad in flame-resistant clothing, safety goggles, rubber gloves and thick, heavy boots.

They are the individuals who epitomize dedication to service in its purest form. As we celebrate Lineworker Appreciation Day in April, this is an important moment to reflect on the essential role they play in our daily lives.

Amid towering utility poles and power lines, lineworkers exhibit a strength that goes far beyond the physical. Whether battling inclement weather, troubleshooting technical problems or navigating treacherous heights, lineworkers demonstrate resilience and a quiet determination to keep our lights on, our homes comfortable, and our communities connected.

Spoon River Electric crews travel across our five-county service territory, building, maintaining and repairing parts of our local system. Their extraordinary skills ensure our homes remain connected to the grid, businesses stay operational, and emergency services remain accessible — a lifeline that connects us all.

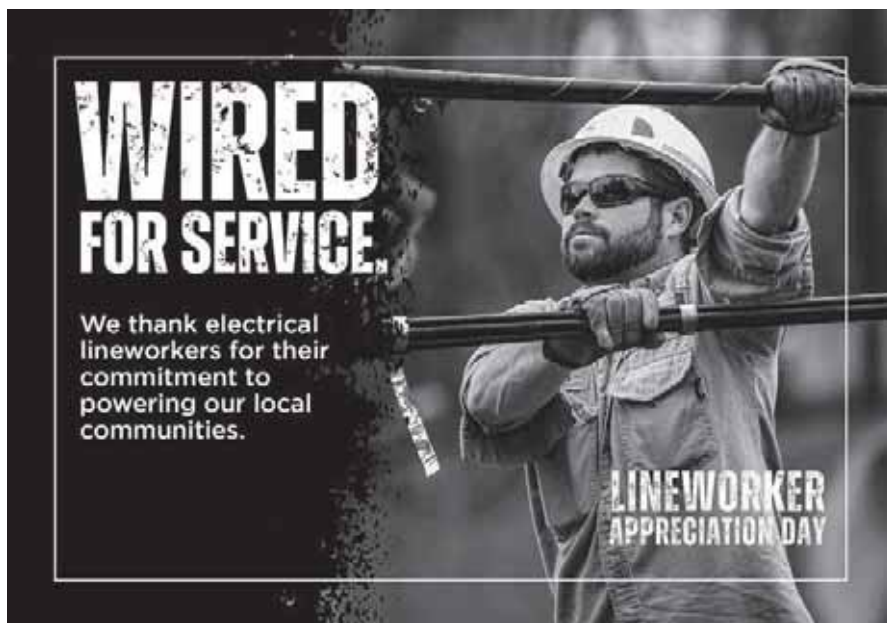
In moments of crisis, when the lights go out and we find ourselves in the dark, lineworkers emerge as beacons of hope. Their swift response restores

normalcy, offering reassurance in times of uncertainty. Whether repairing storm-ravaged power lines or ensuring continuity during emergencies, their unwavering commitment illuminates life when we need it most.

Spoon River Electric lineworkers also answer the call beyond the boundaries of home. Our crews travel to fellow co-ops, near or far, when widespread outages occur and additional support is needed. Cooperation among cooperatives is one of our seven guiding principles, and no one embodies this core commitment better than lineworkers.

This month, as we celebrate the remarkable men and women who ensure reliable power, let's recognize their unwavering dedication to the local communities they serve.

The next time you flip a switch, please take a moment to remember those who make it possible — lineworkers, who are wired for service and dedicated to illuminating life.



Spoon River Electric Cooperative

930 South Fifth Ave, PO Box 340,
Canton, IL 61520
8:00 a.m. – 4:30 p.m.
309-647-2700 • www.srecoop.org

President/CEO

Josh DeWees
jdewees@srecoop.org

Chairman

Bernard Marvel, Browning

Vice Chairman

Wesley Strode, Marietta

Secretary

Jack Clark, Lewistown

Treasurer

JoDee Pedigo, Canton

Board of Directors

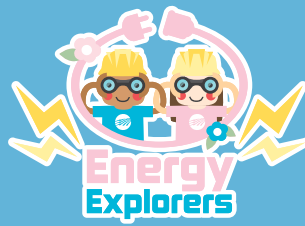
Joe Davis, Canton
John Disharoon, Cuba
Kurt Duncan, Lewistown
Dan Williams, Smithfield

Editor of Spoon River News

Taryn Mellert
tmellert@srecoop.org

Spoon River Electric Cooperative – By the Numbers

Miles of line energized: 1,272
Number of members served: 5,022
Number of power poles
in territory: 29,361



SPRING EFFICIENCY WORD SEARCH

Did you know there are several ways to save energy during spring months?

Read the energy-saving tips below to learn more, then find the bolded words in the puzzle below.

E	S	W	Z	S	V	M	P	A	S	M	M	E	Z	R
Y	C	T	Z	I	T	I	B	S	R	D	N	O	L	A
F	K	J	H	Y	N	X	S	U	E	X	U	N	P	I
P	R	K	N	G	R	E	N	F	G	Q	L	J	T	Z
G	Z	I	K	D	I	M	P	E	R	E	X	W	A	S
Q	L	X	L	F	Y	L	P	I	A	Z	Q	C	E	D
F	V	Z	N	X	S	F	D	G	H	U	Z	E	G	X
E	N	E	R	G	Y	M	I	E	C	K	R	N	F	G
B	H	V	J	E	O	F	E	I	L	T	I	C	Q	S
K	P	T	Q	J	J	C	D	L	E	H	G	C	V	I
Q	Z	N	N	C	S	V	Q	D	D	W	P	N	E	M
T	P	T	T	V	L	I	A	U	P	W	X	P	I	F
L	D	R	O	J	A	H	H	I	Q	B	F	F	U	F
C	T	G	B	G	S	P	P	T	G	I	W	K	M	Y
S	W	O	D	N	I	W	R	S	K	M	W	Y	U	K

- Use **LED lights** around your home. LEDs use 75% less energy than traditional incandescent light bulbs.
- Plant **shade trees** around your home to block unwanted heat from the sun.
- Unplug devices and electronics that consume energy when they're not in use, like phone **chargers**.
- Seal air leaks around exterior doors and **windows** to save energy and keep your home comfortable.
- Ceiling fans cool people, not rooms. To save **energy**, turn them off when you leave the room.

TIPS TO AVOID

ENERGY SCAMS



Don't fall for a power restoration rip off. Some scammers will contact you and offer to restore power quickly or in a preferential order if you make an immediate payment. These scams typically occur after major storms or disasters that cause widespread outages. We will never request or require payment to restore power after a natural disaster or storm. If post-storm repairs to customer-owned equipment are necessary, we will advise you to work with a licensed contractor. If any charges are applicable, you will be billed through your account.

Source: Utilities United Against Scams



Stay safe this summer: Backyard electrical safety



As the weather warms and you spend more time outdoors, it's essential to prioritize electrical safety. Hidden hazards can pose serious risks.

Here are some critical safety tips to keep your loved ones safe in your backyard.

Stay away from power lines

Overhead power lines can be closer than they appear. Teach children never to climb trees near power lines, and never to fly kites, drones, remote-controlled toys or balloons in areas where power lines are present. If you see a downed power line, stay at least 50 feet away, and report it to your local utility company immediately.

Trampoline safety

If you're considering an above-ground trampoline, remember to look up for power lines. Children jumping high into the air could come dangerously close to overhead electric lines, which pose a serious risk of shock or electrocution.

Thinking about installing an in-ground trampoline instead? Before you dig, call 811 to have underground utility lines marked. Digging without knowing the location of buried electrical, gas or water lines can result in dangerous utility strikes. This simple step can prevent accidents, service interruptions and costly repairs.

Water safety

Water and electricity are a dangerous combination. Keep these tips in mind to prevent electrical hazards and create a safe space for swimming, soaking and outdoor fun.

- Ensure pool lights, filters and outdoor outlets have ground fault circuit interrupter (GFCI)

protection and inspect them regularly. GFCIs are designed to quickly shut off electrical power if they detect even a small change in electrical current.

- If you notice flickering lights or feel a tingling sensation in the water, exit immediately and contact a professional. Faulty wiring can cause electric shock drowning (ESD).
- Avoid using plug-in devices, like radios, speakers or chargers, near water. Opt for battery-operated, waterproof devices to reduce the risk of shock.
- Know what to do in case of an electrical emergency. If someone is shocked, do not enter the water. Turn off the power source, call 911 and use a nonconductive tool, like a fiberglass pool pole, to assist.
- If it starts to rain, unplug electrical equipment, such as string lights, radios, speakers or power tools. Teach children not to touch electrical appliances with wet hands.

Outdoor sports

Sports and play areas are a haven for children, but they can also contain hidden electrical hazards. Here's how to protect your loved ones:

- Ensure swings and other tall play structures are far from overhead power lines.
- If you have outdoor lighting for night games, ensure the fixtures are weatherproof and properly installed. Have a professional check for frayed wires or loose connections.

- If kids are playing with a ball and it goes inside a substation fence, teach them never to touch or climb the fence to attempt to retrieve it or any other item. Instead, call your electric utility to safely take care of it.
- Install a weather app on your phone to inform you of weather alerts. Lightning can occur up to 10 miles away from the heart of the storm, so if you hear thunder, seek shelter inside.

Supervise children around electrical equipment

Children are naturally curious, which is why they should be kept away from outdoor electrical equipment like utility boxes, transformers and air conditioning units. If you have an outdoor generator, make sure it is stored in a secure, ventilated area that children cannot access, and never plug a generator directly into your home's electrical system.

Avoid DIY electrical work

If you're planning a backyard upgrade, such as installing landscape lighting, sports lighting or poolside outlets, leave the electrical work to licensed electricians. DIY electrical projects can pose serious safety risks to you and your family if done incorrectly.

From poolside play to backyard sports, it's important to be aware of electrical hazards and how to avoid them. By following these guidelines, you can create a home oasis that is both fun and safe.

For more tips on electrical safety, visit SafeElectricity.org.



ATTENTION 2024-2025 SENIORS!

Spoon River Electric Cooperative is Awarding Three \$1,000 Scholarships to High School Seniors

High school students who are seniors during the 2024-2025 school year and are the son or daughter of a Spoon River Electric member are eligible to apply for a \$1,000 Scholastic Scholarship, a \$1,000 Honorary Scholarship, and the \$1,000 Scott Parrish Memorial Scholarship, which will be awarded at this year's Annual Meeting.

Please fill out the form at the bottom of the page and return it to the Cooperative to participate. Applications must be turned in by May 9, 2025 to be considered. Please see official rules and descriptions of scholarships below.

OFFICIAL RULES

- **Applying students and their parent/legal guardian must be present at the Annual Meeting to win.**
- Students must be a son or daughter of a Spoon River Electric Cooperative Member.
- Students must be a high school senior during the 2024-2025 school year and begin college undergraduate studies in the 2025-2026 school year. Students must plan on attending a two-year or four-year accredited college or university, including vocational/technical schools.
- Scholarship winners must be full-time students (at least 12 hours) during the 2025-2026 academic year.
- Scholarships are for one year and are non-renewable.
- Past Spoon River Electric Cooperative scholarship winners are not eligible to receive another one.

SCHOLASTIC AND SCOTT PARRISH MEMORIAL SCHOLARSHIPS

- The Scholastic and Scott Parrish Memorial Scholarships will be awarded based on an application detailing GPA, college entrance test scores, work and volunteer experience, participation in school and community activities, and a biographical statement.
- Semi-finalists will be notified by mail with a time and place for a personal interview.
- Those not chosen as semi-finalists for the Scholastic and Scott Parrish Memorial Scholarships will be automatically placed in the Honorary Scholarship drawing.

HONORARY SCHOLARSHIP

- The Honorary Scholarship will be awarded by a drawing as students are recognized at the Annual Meeting.
- All applicants are eligible for the Honorary Scholarship drawing except the Scholastic and Parrish Scholarship winners.



Scholarship Participation Request

Name of Student _____

Address of Student _____

Name of Parent/Guardian _____

Telephone Number _____

**Return To: Taryn Mellert
Spoon River Electric Cooperative
PO Box 340
Canton, IL 61520
647-2700**