

# THE GRID

**P.O. Box 709  
(104 Dewitt Ave., East)  
Mattoon, Illinois 61938**

**Phone:** 217-235-0341  
or **Toll-Free:**  
1-888-661-CMEC (2632)  
**Office hours:**  
Monday-Friday  
7:30a.m. - 4:30p.m.

**Chairman**

Kent Metzger .....Gays

**Vice Chairman**

Bill Voyles .....Sullivan

**Secretary**

Andrew Fearn ....Charleston

**Treasurer**

Thomas Sherman ...Humboldt

**Directors**

Jeffery Hudson .....Charleston

Mike Love ..... Mattoon

Colt Roderick ..... Trilla

**President/CEO**

Amy Borntager

**To Report an Outage  
call #888-661-2632**

**Find Your Name  
and Win \$50**

Find your name hidden inside this issue of The Grid and receive a **\$50 bill credit**. Credit must be claimed by the end of each month in which this newsletter is published.



Your Touchstone Energy® Cooperative 

## Whatever It Takes

Lineworkers are ranked as one of the 10 most dangerous jobs in the country. The lineworkers at your cooperative work rain or shine, in often challenging conditions, to ensure you have reliable electricity. We're celebrating Lineworker Appreciation Day on April 8, 2024. We are thankful for the work they do serving you, our members, and the sacrifices they make keeping the lights on.



## IN CASE YOU MISSED IT

Our Board of Directors have approved an overall 5.8% rate increase beginning with March 2024 electric use. CMEC identifies rates based on cost of service while keeping our members and communities front and center. See our March Grid at [www.cmec.coop](http://www.cmec.coop) or call our office for more information.

# Congratulations



## CONGRATULATIONS TO KELLIE MOORE

Promoted to Director of Member Services

# Coffee

on the Co-op



We will be hosting Coffee on the Co-op again this spring

Wednesday, April 24 & Wednesday, May 29

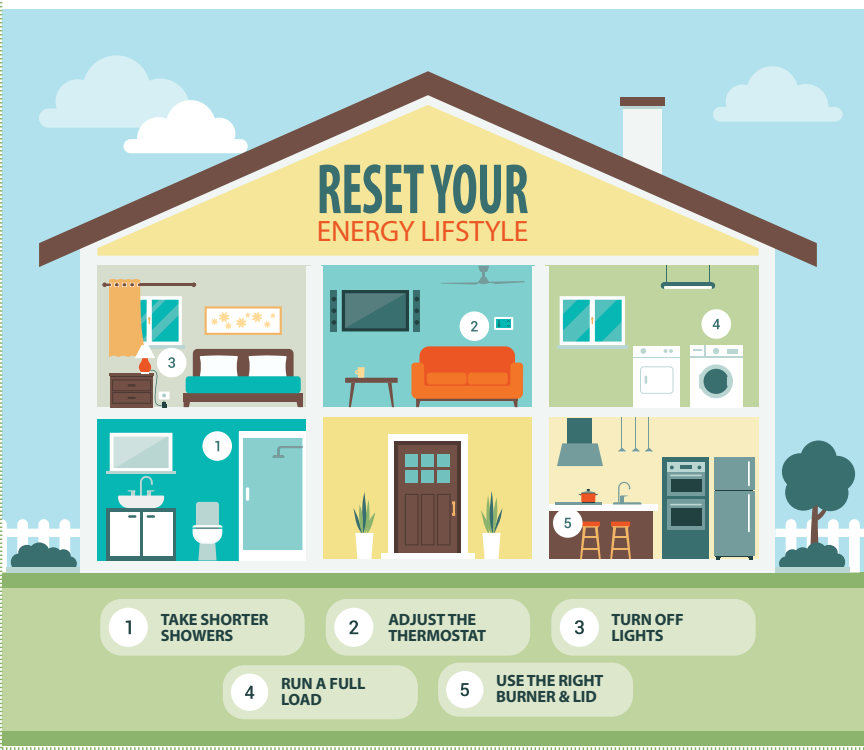
7-8:30 a.m. at Downtown Diner, Mattoon

If you missed it last time, this is a great way to meet our CEO, chat with fellow members and ask questions. We may continue this into the summer and hope to see you there!



## Reset Your Energy Lifestyle

Looking to live more sustainably and use less energy? Simple behavioral changes will help you with a more energy efficient way of life. Take shorter showers, adjust the thermostat, turn off lights, wait until you have a full load before running the dishwasher or laundry, and when cooking on the stovetop, match the size of the pot or pan to the burner and use a lid. SmartHub is a great application to help you monitor usage. Call us for more ways to save.



# SAVE the DATE!

## 84th Member Celebration & Annual Meeting

# OCT. 4, 2024

At Peterson Park

# REMINDER!

CMEC Scholarship applications are due no later than **APRIL 30**. Email [cbradbury@cmeccoop.com](mailto:cbradbury@cmeccoop.com) for details or forms.

## ENERGY EFFICIENCY TIP OF THE MONTH

A well-designed landscape can add beauty to your home and reduce home heating and cooling costs. Plant deciduous trees with high, spreading crowns to the south of your home to block sunlight in the summer and reduce the need for air conditioning. Deciduous trees lose their leaves in the winter, allowing sunlight to warm your home.

Plant evergreen trees and shrubs with low crowns to block winter winds. Dense evergreen trees and shrubs planted to the north and northwest are the most common type of windbreak and can help lower energy used for home heating.

*Source: energy.gov*



**CALL 811**  
**BEFORE YOU DIG**

Protect yourself and avoid damage to neighborhood underground utility lines.

 **Safe Electricity.org**





## Check Your Breakers

When you experience an outage, the first thing you should do is check your breakers. For some members, this only means checking the breaker panel located inside your house or garage. If your location is the only one without power, there is a chance your breaker tripped. For others, there is an additional step. Take a look at the meter(s) at your location. Your meter may be located on your house, garage, outbuilding, a pole, or other structure. Remember, you may have more than one meter. If the meter display window is blank, you may have an issue with the meter and will need to call the cooperative at 217-235-0341. **Charles Cox**

## INNOVATING FOR THE FUTURE

The energy industry is changing, but electric co-ops are known for adapting to their local members' needs. As we plan for changes and challenges ahead, innovative solutions are essential. Here are a few ways we're innovating for the future.



### Use of Advanced Technologies

Drones aid in power line inspection and maintenance. Smart meters provide real-time data and help pinpoint service issues.

### Preparing for Increased Energy Use

The demand for electricity is increasing as more technologies are electrified. Co-ops are exploring innovative solutions like battery storage to meet demand.

### Energy Solutions for Members

Co-ops provide innovative efficiency services like appliance rebates and flexible billing options to help members manage their energy use.

### Strength in Numbers

By working with and learning from other co-ops, we are uniquely positioned to improve service for our local communities.

Monthly Board Meeting Minutes can be viewed on our website: [cmec.coop](http://cmec.coop)