

## Director nomination and election process

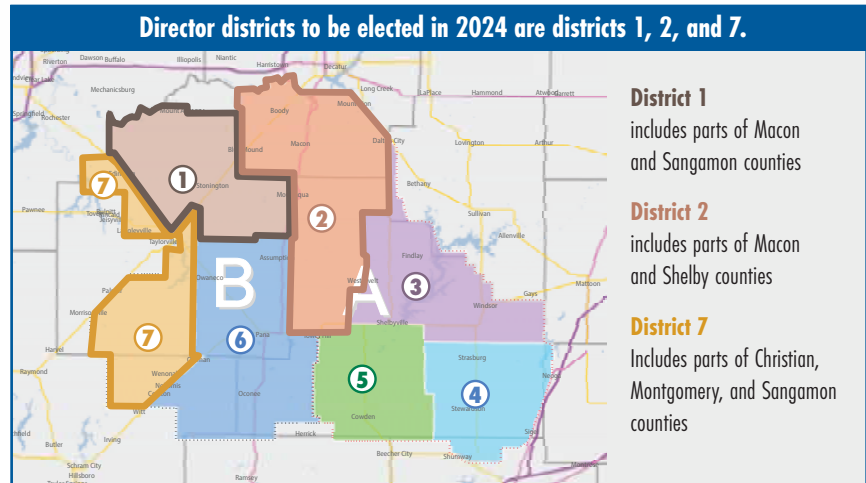
Shelby Electric Cooperative's 85th Annual Meeting of Members will be held on Friday, June 7, 2024, and will include the election of three directors.

Directors are elected from the cooperative's membership, and any active Class A member may seek election to serve as a director. An "active Class A member" is a Class A member currently receiving electric energy services from the cooperative.

The cooperative's board of directors consists of nine directors, seven of which are elected from each of the seven director districts, one of which is elected "at large" from the cooperative service area covered by districts 1, 6, and 7, and one of which is elected "at large" from the cooperative service area covered by districts 2, 3, 4, and 5. The directors' three-year terms of office are staggered. In 2024, directors will be elected from Districts 1, 2, and 7 for full three-year terms. Although directors are elected from particular director districts, **all active** Class A members may vote in every election.

### The qualifications in the cooperative's bylaws to serve as a director are:

- Must be an active Class A member who is a natural person (not a corporation, etc.) and not a person acting in a representative capacity for a Class A member (not a Class A member's guardian, etc.)
- Must be a bona fide resident in the director district from which he or she is to be elected or a bona fide resident in the cooperative service area covering those districts for which the "at large" directors are elected (see above).
- Must be at least 18 years old.
- Must not have completed six or more three-year terms as a director.
- Must not be employed by or financially interested in:
  - Any business or enterprise engaged in the sale of any form of energy to the cooperative (other than any form of energy that the cooperative is required



by law to purchase) or to any of the cooperative's subsidiaries, members, or consumers.

- Any business or enterprise engaged in the delivery of any form of energy to the cooperative or any of the cooperative's subsidiaries, members, or consumers.
- Any other business or enterprise which is also engaged in by the cooperative or its subsidiaries, members, or consumers.
- Must not be the incumbent or a candidate for an elective public office in connection with which a salary is paid, other than a township or school office.
- Must, if seeking reelection for a fourth full term, be certified by the National Rural Electric Cooperative Association to have successfully completed its course of training to be a Credentialed Cooperative Director for rural electric cooperatives.

### A cooperative director is expected to:

- Attend all monthly board meetings, which generally last from three to five hours.
- Attend all special board meetings, committee meetings, and annual meetings of members.
- Attend all board meetings of other organizations for which he or she is a director

representing Shelby Electric Cooperative.

- Complete the NRECA Credentialed Cooperative Director training during the first three-year term of office.

The cooperative's bylaws provide that directors shall typically be elected by ballot at the annual meeting of members. The board of directors has discretion, however, to direct that an election be conducted exclusively through written ballots submitted by mail or through online Internet voting. While the board of directors anticipates conducting the election by ballot at the annual meeting, a final determination has not yet been made. Additional information will be provided.

Nominating petitions and Statement of Qualifications are available through the cooperative's legal counsel, Rammelkamp Bradney, and may be requested by contacting Amy Jackson via telephone at 217-245-6177, email at [ajackson@rblawyers.net](mailto:ajackson@rblawyers.net), or by U.S. mail at P.O. Box 550, Jacksonville, IL 62651-0550. Nominating petitions must be signed by 15 or more active Class A members. The nominating petition and a Statement of Qualifications demonstrating that the potential nominee meets the qualifications must be filed with the secretary of the cooperative (or the secretary's designee) by Friday, April 5, 2024, at 4 p.m.

# Keeping Right-of-Way Clear



Before line clearance



After line clearance

One of the most efficient ways that Shelby Electric Cooperative (SEC) can provide reliable electricity to our consumer-members is through right-of-way (ROW) clearing and tree trimming. ROW refers to the portion of land under or around power lines and equipment that SEC has the right and responsibility to clear and maintain. SEC provides electricity

over approximately 2,200 miles of energized line in all or parts of nine counties.

“Approximately 70 percent of SEC’s power interruptions occur due to trees interfering with the power lines,” according to Terry Oldham, SEC’s Manager of Operations.

When the wind blows, it can cause trees to come into contact with the lines, causing your lights to blink. During storms, limbs can break and fall onto lines, causing fuses to blow or reclosers to open. Even worse, a storm may cause a tree or heavy limb to fall and take down a power line and pole, which can create other issues.

A clear ROW cuts down on annoying blinks and outages; along with making it easier for linemen to access and fix other problems that may occur. SEC seeks to provide you with safe, reliable electric service all year round, and our ROW maintenance program is just one more tool for us to achieve this.

## SHELBY News

**P.O. BOX 560**  
**Shelbyville, IL 62565**  
**Phone: 217-774-3986**  
**or 1-800-677-2612**  
**Pay-by-Phone:**  
**1-855-385-9981**  
**www.shelbyelectric.coop**  
**twitter.com/YourCoop**  
**facebook.com/YourCoop**

**Office Hours:**  
**7:00 a.m. - 4:00 p.m.**

**Offices Closed**  
**Friday March 29 for**  
**Good Friday.**

Scan QR code to watch a time-lapse video of ROW crew at work.



# 2024 Tree Trimming, Spraying & Pole Change Out Schedule

## \*2024 Tree Trimming and Mowing

Shelby Electric Cooperative’s tree trimming crew and contractors will be trimming trees and mowing in these areas:  
**P** and **W**.

## \*2024 Spraying

Shelby Electric Cooperative’s spraying crews and contractors will be working in these areas:  
**E** and **M**.

## \*2024 Pole Change Outs

Shelby Electric Cooperative crews will be working in the following areas:  
**P** and **W**.

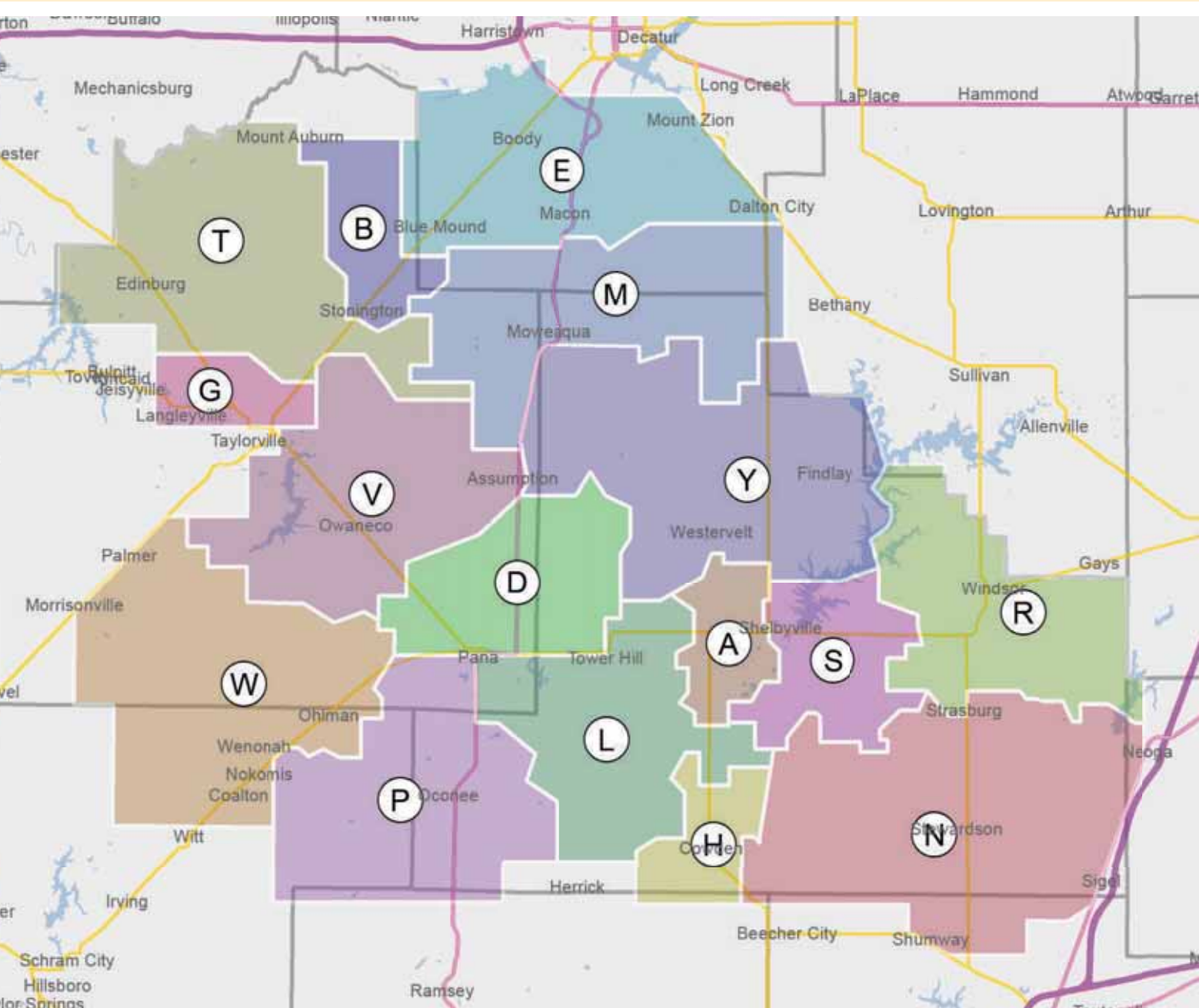
*\*These are our areas of concentration for 2024, however, ROW maintenance work will continue in other parts of our service territory as needed!*



SEC's Operations Department maintains an annual schedule for tree trimming, spraying, and pole inspections (see our planned 2024 activities in graphic below). Any contractors working for SEC will have signs on their vehicles that indicate they are working for the cooperative. If you have any questions or concerns, contact the cooperative at 217-774-3986 or 1-800-677-2612.

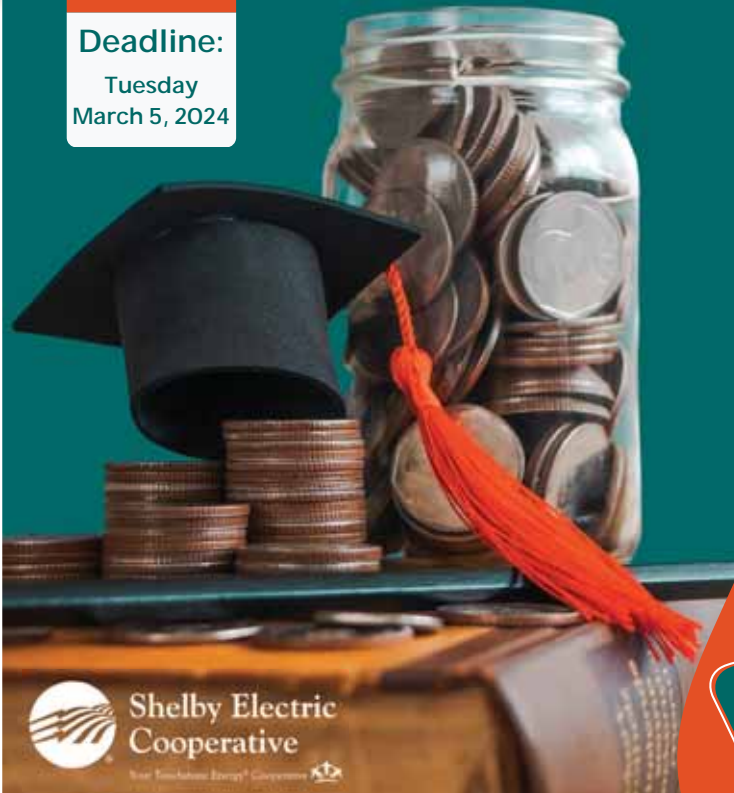
Substation	Letter Associated
Airport	A
Blue Mound	B
Dunkel	D
Elwin	E
Grove City	G
Herrick	H
Lakewood	L
Moweauqua	M

Substation	Letter Associated
Neoga	N
Pana	P
Richland	R
Shelbyville	S
Taylorville	T
Velma	V
Wenonah	W
Yantisville	Y





**Deadline:**  
Tuesday  
March 5, 2024



## Scholarship Reminder!

Time is running out to submit your Shelby Electric Cooperative (SEC) scholarship application.

See guidelines and official rules at [shelbyelectric.coop](http://shelbyelectric.coop) under the "Community" tab. Download an application or pick one up from your high school guidance counselor's office.

Three academic scholarships in the amount of \$1,000 each will be awarded.

Eligible students must be sons or daughters of any current SEC member who is receiving electric service from the cooperative at the time the scholarship application is submitted. Students must be high school seniors pursuing a college education in the United States.

**Deadline: March 5, 2024**

Applications may be delivered to the office, mailed, or emailed.

Shelby Electric Cooperative

Attn: SEC Scholarship

PO Box 560

Shelbyville, IL 62565

[scholarship@shelbyelectric.coop](mailto:scholarship@shelbyelectric.coop)

217-774-3986

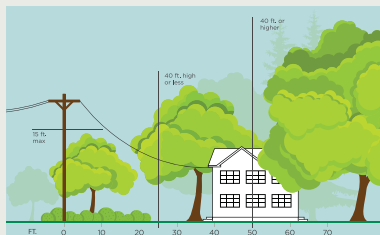


# 3 Ways to Help Limit Tree Trimming

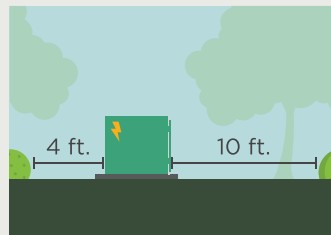
Did you know it is necessary for electric utilities to trim trees and other types of vegetation that grow too close to and under overhead power lines? We know you love your trees, and we will do everything we can to avoid trimming them.

Here's how you can help:

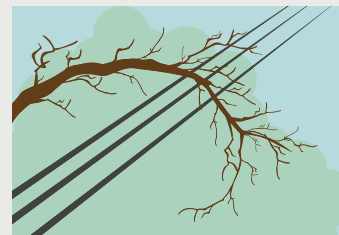
**1. Plant trees in the right place.** Trees that will be <40 ft. should be planted at least 25 ft. away from power lines (>40ft. should be at least 50 ft. away).



**2. Don't block pad-mounted transformers.** Plant shrubs at least 10 ft. away from transformer doors and 4 ft. from transformer sides.



**3. Report dangerous branches.** If you spot a tree or branch that is dangerously close to power lines, please let us know.



**Let's work together to enjoy the beauty.**  
**Trimming improves safety and reliability for all.**  
**Contact the cooperative at 1-800-677-2612.**

