



More Power to You

Consult Us If You Plan to Increase Electric Load

*Shane L. Larson,
Chief Executive Officer*

Are you planning to build an addition to your home? Perhaps add a fan or two to cool the livestock? Is your business buying new machinery that will use electricity? If the answers to any of these questions are “yes,” please include Rock Energy Cooperative in the planning process.

Co-op facilities are designed to meet an individual member’s initial load requirement at the time service is started. If that load is significantly increased, the capacity of the present system might not be sufficient to handle it. When that happens, the system becomes overloaded and, you guessed it, there’s a power outage. An overloaded system also can damage the co-op’s transformers or your electrical equipment, which might lead to expensive repairs.

Our equipment often can handle an overload for a while, but its life span will decrease significantly when the rated capacity is exceeded over an extended period of time. That means additional costs for the co-op. And since we are a cost-of-service provider, those additional expenses ultimately are passed on to members.

So if you’re planning to significantly increase your electric load, just call our Operations Department. Our guys will gather the needed information and determine whether the capacity of the present equipment is adequate. In situations where a significant amount of new load will be added, we might need to install larger service equipment or make other changes.

One simple call can save you from an unplanned outage and paying for costly damage to your equipment or the co-op’s. Please make sure you notify us as far in advance as possible to ensure that the required service upgrade will be available when you need it.

As I’m writing this, we’re suffering through our fifth consecutive day of temperatures over 100. By the time you’re reading this in early August, I hope the heat wave is over and we finally have had some significant rainfall.

In early July, we posted a notice on our web site asking members to curtail their use of electricity during the peak hours of 1 to 7 p.m. weekdays. I want to assure everyone that the request was not made because of inadequate supply. Our wholesale supplier has plenty of electricity available to meet the demand and did not even reach record usage during the July heat wave, largely because there’s less industrial demand due to the economy.

Even though there’s plenty of electricity to meet demand, our wholesale power supplier charges more during peak consumption times. Members can help the co-op’s bottom line by reducing usage during peak hours.

Because we’re a cooperative, keeping our costs down ultimately affects your energy costs.

Speaking of the heat wave, we were concerned that the hot weather might keep members away from Rock Energy Night at the Ballpark on Saturday, June 30. Instead, we had a record turnout with more than 600 ticket vouchers redeemed that night. Anyone in the pizza line will tell you just how crowded the ballpark was that night. The Snappers staff had a difficult time keeping up with the demand.

We have plenty of discounted Snappers tickets available for the rest of the season. You can stop at our Janesville or South Beloit offices to buy tickets for just \$2 each. While you’re in the office, please let us know if there’s anything we can do to better serve your energy needs. ■



Members can help the co-op’s bottom line by reducing usage during peak hours.



Great Night at the Ballpark

Co-op members filled the stands at Beloit's Telfer Park on Saturday, June 30, for the 11th Annual Rock Energy Night at the Ballpark. A total of 618 co-op members enjoyed baseball, food, and a fabulous fireworks show.

Clockwise, starting above left: Director Ron Richards throws out the first pitch. Director Gordy Alexander and his wife, Carol, take their grandkids to get autographs. Directors toss tote bags to eager co-op members. The first 50 kids at the game received a Snappers souvenir. Jordan Wolters, left, and Nolan Kluge compete in one of the between-inning games.



Co-op to Install 10,000 Feet of Natural Gas Main

Rock Energy Cooperative has started a natural gas project designed to strengthen its distribution system and improve reliability in the South Beloit and Rockton areas as well as west of the Rock River.

The project started in July on Prairie Hill Road at the South Beloit Industrial Park near Wendy's and will continue across the Rock River to South Bluff Street, then north to the entrance of Twin Oaks Subdivision, and south to Yale Bridge Road.

Gas mains also will be installed along Nazarene Drive, the frontage road to the east of Blackhawk Boulevard.

The project involves digging a 3-foot trench and installing 10,000 feet of natural gas main, including 4-inch steel pipe that carries the high-pressure gas and 6-inch plastic pipe that delivers natural gas from a



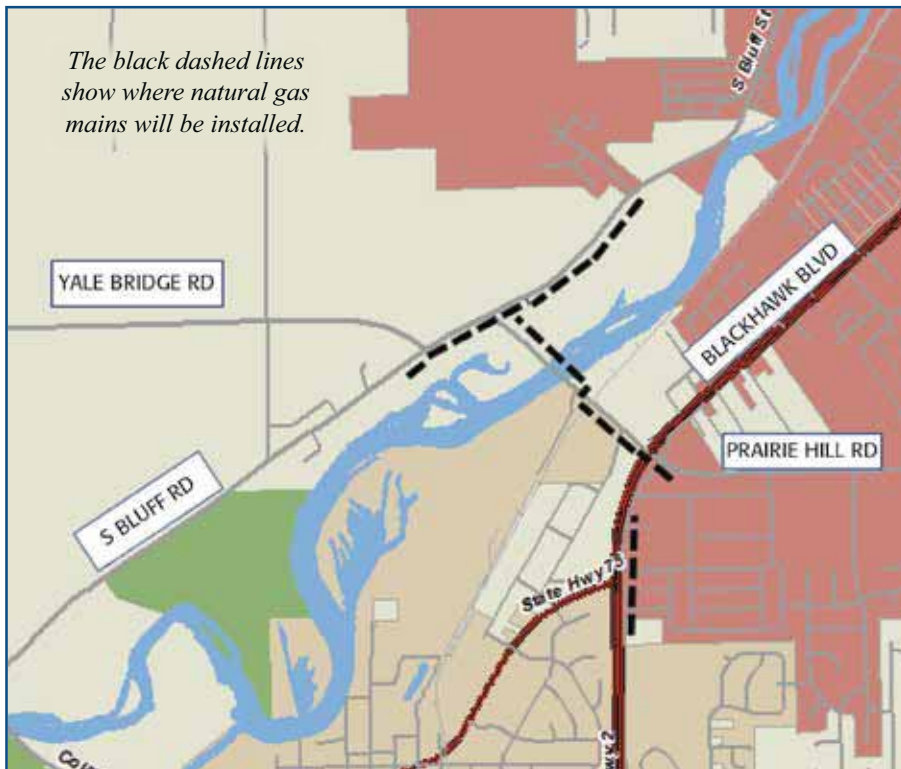
These natural gas pipes, which will be used in the expansion project, are positioned along Nazarene Drive in South Beloit.

regulating station to members' homes.

The co-op's gas crews will work on the project along with contractors from other companies, including J&R Underground of Blanchardville, which will oversee placing the pipe under the Rock River. Work is expected to be

finished by November.

Members should not experience any interruption in their natural gas service during the project. Any questions can be directed to Tod Benson, assistant natural gas superintendent, at (866) 752-4550. ■



The black dashed lines show where natural gas mains will be installed.

Mark Your Calendar

Member Appreciation Day 2012
Pancake Breakfast

Saturday, Sept. 15
8 to 10:30 a.m.

REC Headquarters,
2815 Kennedy Road,
Janesville, Wis.

Watch for details!

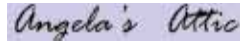
Get Connected

Check out these great deals offered with your Co-op Connections Card.



Angela's Attic, 1020 Gardner St., South Beloit – (815) 389-1679 – www.angelas-attic.com

Antiques and collectibles.



10% Discount on Purchase of \$20 or More (cash/check only; prices not marked "Firm" or "Sale")

H & R Block, 1017 Kellogg Ave., Janesville – (608) 741-0770 – www.hrblock.com

Tax and financial services. Preparing the nation's taxes since 1955. Spanish language available. Tax audit support. Year-round assistance.



\$29 Second Look for Any Prior Return to Verify Accuracy of Preparations

Introducing New Healthy Savings Discounts!

The same program that offers discounts at local merchants and has saved Rock Energy members \$46,000 on prescriptions now offers significant savings on dental, vision, hearing, lab and imaging services, and chiropractic work. To locate providers that participate in the Healthy Savings program, call (800) 800-7616 or visit HealthySavings.coop. Be sure to have your Co-op Connections Card handy.

Add Up Your Savings!

Tell us how much you have saved by using your Co-op Connections Card. If you have a story you'd like to share with other Rock Energy members, e-mail Barbara Uebelacker at BarbU@rock.coop or call her at (866) 752-4550.



P.O. Box 1758
2815 Kennedy Rd.
Janesville, WI 53547

(608) 752-4550 • (866) 752-4550

Shane Larson, CEO
Barbara Uebelacker,
Editor

P.O. Box 126
15229 Willowbrook Rd.
South Beloit, IL 61080

Board Adopts Idle Services Policy

The Rock Energy Cooperative Board of Directors adopted a policy in May related to idle services and temporary disconnects and reconnects.

"Any electric or natural gas service/account that has been disconnected (idle) for a period of two (2) or more years shall be subject to having cooperative equipment permanently removed (retired)," according to the policy.

A second part of the policy says, "Any electric or natural gas service/account that was disconnected and subsequently reconnected by the same member, shall be billed any avoided past monthly facility charges, plus the reconnect trip charge as listed on the cooperative's Fee Schedule."

This would apply to those who go to warmer climates during the winter and any service that's temporarily disconnected for whatever reason. ■

Have a Safe and Happy Labor Day!

Rock Energy Cooperative offices will be closed on Monday, Sept. 3, in observance of Labor Day. We will reopen at 7:30 a.m. Tuesday, Sept. 4. Members can make payments in the drop boxes at both offices throughout the holiday weekend. Even though our offices are closed, standby crews are always available 24 hours a day. If you need to report a power outage, please call (608) 752-4550 or toll-free (866) 752-4550.



Energy Efficiency

Tip of the Month

Look to your windows for energy savings. Use weatherstripping on old windows, and, if you can, add storm windows. In hot climates, add solar film screening to west-facing windows to catch heat. For new units, consider double-glazed panes; in cold climates, "low-e" coatings on glass can help reduce heat loss. Find more ways to save at TogetherWeSave.com.

Source: Touchstone Energy® Cooperatives