

# THE BEST



Made in USA.

Available in 50 and 85 gallon models.

## BEST CONSTRUCTION

No Rust, No Corrosion — EVER! Unique 2-ply PermaGuard design: A seamless, blow-molded polybutene inner tank wrapped in filament-wound fiberglass. Great for 'brutal well water' conditions.

## BEST DURABILITY

Toughest and strongest tank in the residential water heater industry. No one comes close. Marathon tanks are regularly tested to withstand 100,000 cycles from zero-to-150 psi. Even 'high-end' steel water heaters struggle to make it 1/4 the way through this punishment.

## BEST FUNCTIONALITY

Beauty more than skin deep. No anode rod means no rotten-egg smell from sulfates found in many water systems. Easy-on/easy-off water connections. Self-cleaning action of bowl shaped tank bottom, coupled with a brass drain valve at the very bottom of the tank provides for more complete draining.

## HIGH EFFICIENCY



Save on your energy bill. 2.5 inches of Envirofoam® insulation minimizes stand-by heat loss. No 'heat-trap' fittings that can clog or chatter.

## BEST VALUE

Marathon's renowned durability eliminates the cost of buying and the cost of re-installing a new water heater every 10-years (national average). This coupled with energy savings makes the total cost of ownership lower than typical water heaters.

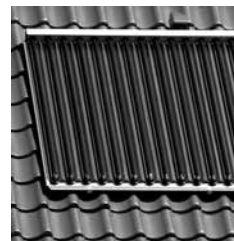


## BEST WARRANTY

Lifetime tank warranty\*—  
\*The last water heater you will need to buy for your home. If tank fails you get a new Marathon with no 'pro-rating' deductions. Selling your home, making a warranty claim, use in multi-family, commercial/industrial/agricultural or high-temperature applications does not void warranty (\*contact us for more details.).

## "GREEN POWER" READY

Ready to use for 'thermal storage' with geo-thermal heat pumps, solar and 'Green/Renewable Energy.' Conduit between control boxes facilitates wiring for 'Off-Peak' and special controls.



Southern Illinois  
Electric Cooperative

Your Touchstone Energy® Partner

1-800-762-1400