

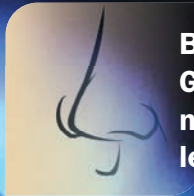
# Recognizing a Gas Leak

## What should you do if you suspect a gas leak?

If you smell the “rotten egg” smell of natural gas, you should do the following:

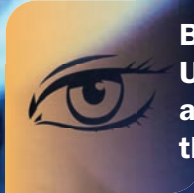
- Leave the area immediately and call Rock Energy at 866-752-4550 from a safe location. Listen to the prompts and press 1 to report the outage.
- Do not use any type of phone in the area of the potential leak, do not turn any lights or appliances on or off.
- Do not open windows or doors in an attempt to ventilate.
- Do not turn on any pilot lights.
- Stay outside until someone from Rock Energy or another professional responder arrives.
- Do not reenter the house until cleared to do so.

For more information, check out the Rock Energy Natural Gas Safety video. **Click on the QR Code here to view video.**



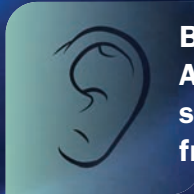
### BY SMELL

Gas providers add a chemical that makes natural gas smell like rotten eggs so any leaks can be easily detected.



### BY SIGHT

Unexplained dead grass, bubbling water, and blowing dirt near a meter or along the pipeline route are signs of a leak.



### BY SOUND

An unusual hissing, roaring, or whistling sound along a natural gas line or coming from an appliance might signify a leak.

Rock Energy Cooperative operates about 175 miles of natural gas pipeline in northern Illinois with nearly 9,000 services. Our distribution system is regularly monitored and inspected for corrosion and leaks to ensure safe and reliable service. Please review the safety information in this ad so you can learn how to recognize a natural gas emergency, and take the appropriate action if an accident occurs.



### How can I get more information?

If you have any questions about natural gas safety, we would be happy to provide you with further information. Just call us at 866-752-4550. We also encourage you to visit these web sites to get more information about pipeline safety.

Rock Energy: [www.rock.coop](http://www.rock.coop)

Call 811: [www.call811.com](http://www.call811.com)

Diggers Hotline: [www.diggershotline.com](http://www.diggershotline.com)

JULIE (Joint Utility Locating Information for Excavators): [www.illinois1call.com](http://www.illinois1call.com)

National Pipeline Mapping System: [www.npms.phmsa.dot.gov](http://www.npms.phmsa.dot.gov)