

## President's Report



Josh DeWees  
President/CEO

## Only certified workers can trim trees near power lines

Can anyone trim trees near power lines? The answer is no. Specialized tree trimmers, certified by the Occupational Safety and Health Administration (OSHA) in utility clearance, are the only persons legally allowed to trim within 10 feet of power lines.

OSHA requires this certification because electricity is a serious and widespread hazard to tree workers. According to the Tree Care Industry Association, electricity is the leading cause of death in the tree care industry, causing about 15 percent of all industry fatalities. Tree care industry workers do not have to directly contact a power line to be electrocuted; about half of all electrocution fatalities are the result of indirect contact.

Qualified line-clearance trimmers must be specially trained in how to safely work in proximity to energized lines. They must understand how an electrical grid functions, the effects of tree growth patterns and tree damage and how to implement directional pruning, as required by the American National Standard for Arboricultural Operations' safety standards.

According to OSHA, the duties of line-clearance certified tree trimmers typically include the following:

- Undergoing annual evaluations by licensed professionals to ensure continuous adherence to industry best practices.
- Requesting job briefings from employers and other crew members before starting a job or when environmental conditions change.
- Properly wearing approved personal protective equipment, including fall protection equipment when needed.
- Complying with material handling and mechanical equipment requirements.
- Working with a second line-clearance tree trimmer within voice range.



- Determining the voltages of lines before work begins or assuming that the line is operating at the highest possible voltage if it is not possible to determine voltage.
- Ensuring body parts and any ladders, platforms or aerial devices being used remain outside the minimum approach distance from any energized equipment.
- Using only insulated tools and equipment to remove branches and limbs that are in contact with, or are within the minimum approach distance of, energized lines or equipment.
- Determining if weather conditions are no longer safe to work in, such as the presence of high winds, ice, thunder or lightning that would make the work hazardous.
- Beginning work on storm restoration efforts in the aftermath of a storm if they have been trained in the special hazards involved with this type of work.

Please contact your power provider if you have any questions about line-clearance tree trimmers or tree trimming near power lines.

For information on electrical safety, visit [SafeElectricity.org](http://SafeElectricity.org).

# Spoon River Electric Cooperative

930 South Fifth Ave, PO Box 340,  
Canton, IL 61520  
8:00 a.m. – 4:30 p.m.  
309-647-2700 • www.srecoop.org

## President/CEO

Josh DeWees  
jdedwees@srecoop.org

## Chairman

Bernard Marvel, Browning

## Vice Chairman

Terry Beam, Cuba

## Secretary

Jack Clark, Lewistown

## Treasurer

Lyle Nelson, Abingdon

## Board of Directors

Joe Davis, Canton  
Kurt Duncan, Lewistown  
JoDee Pedigo, Canton  
John Spangler, Marietta  
Wesley Strode, Marietta

## Editor of Spoon River News

Taryn Mellert  
tmellert@srecoop.org

## Spoon River Electric Cooperative – By the Numbers

Miles of line energized: 1,272  
Number of members served: 5,022  
Number of power poles  
in territory: 29,361

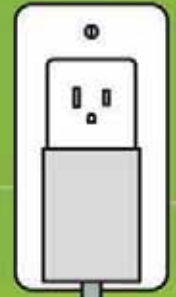
## ELECTRONICS EFFICIENCY WORD SEARCH

Did you know there are ways you can reduce your electronics energy use?

Read the energy-saving tips below, then find and circle the bolded words in the puzzle.



B J C M G S N A M O R S W U L  
R A F O D V T L L P D I O S W  
E B T E M V C E U X S Y W D G  
C B P T D P O W E R S T R I P  
H Y G M E T U A U Y H Z P U Z  
A R P Q E R U T L R N Z N U Y  
R F I H L V I C E Q V P C E S  
G T D F F W K E M R L B N H O  
E B H W C F Q W S U K Y N Z M  
A Q I L I F K N G L O I K B A  
B S R E G R A H C E N O H P C  
L N O Y O V I M A I V I R X T  
E V S U A I L K O L U Y N F C  
Y H V K S L F G T R I P B T G  
P O W E R M A N A G E M E N T



- Use a **power strip** with an on/off switch when powering multiple electronics to easily manage energy use.
- For devices that require **batteries**, use **rechargeable** ones, which are more cost-effective and environmentally friendly.
- **Unplug** electronic products that consume energy even when they're not in use, like **phone chargers**.
- Use the sleep or **power management** mode on your **computer** to save on energy costs.



## Energy Efficiency Tip of the Month

Washing windows and screens is a great way to practice energy efficiency during spring cleaning. Clean windows and screens make your home brighter by allowing more sunlight in, reducing the need for lamps and fixtures. Clean screens also allow more fresh air in the home when the windows are open to recycle indoor air. Natural light and clean air are energy savers, and they enhance overall health and productivity.

Source: [energy.gov](http://energy.gov)



# Play it safe around power lines

Digging holes, climbing trees, flying kites — outdoor play often creates beautiful childhood memories. Before hitting the great outdoors, discuss electrical safety with your children.

## Flying fun

While flying kites, model airplanes, remote-controlled flying toys and drones, stay in large, open areas (such as parks or fields), far away from power lines. If an item gets caught in a power line, teach children to never try



to retrieve it. Instead, an adult should call their electric utility for help.

## General outdoor safety tips

Other important safety guidelines for kids and adults alike include:

- Never throw objects at power lines.
- Stay far away from downed, damaged or low-hanging power lines. An adult should call 911 to report a downed or damaged line.
- Be cautious after a severe storm that caused a power outage. Downed power lines could be hidden under water, snow or storm debris. Wait to go outside until power has been restored.
- Do not climb, sit or play on pad-mount transformers (green boxes).
- Do not climb trees that have overhead power lines near or running through them.

## Poolside

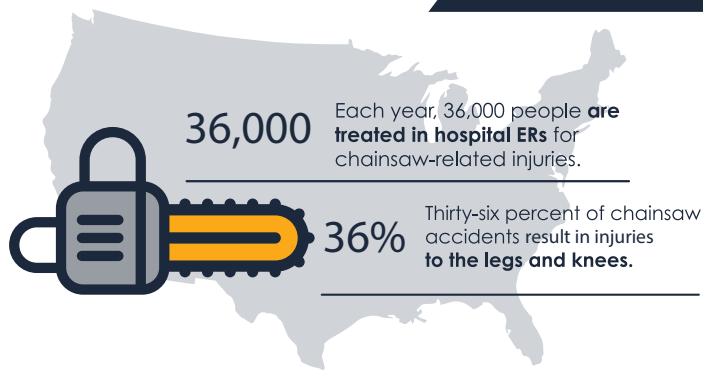
When spending time by the pool, look overhead when using pool skimmers or other long objects to be sure you are not getting close to an overhead power line. If you are swimming and feel a prickly or tingling sensation, do not stay in the pool. There could be a stray electric current from a downed power line or a damaged electrical device. Also, never play in a flooded street or ditch; a downed power line could be hidden by the water and fallen debris.

## Prevention is key

Electric shock and injuries are often preventable. Empower your family with electrical safety knowledge to avoid preventable electric injuries. For more information about electrical safety, visit [SafeElectricity.org](http://SafeElectricity.org).

# Chainsaw Safety

## - STATISTICS -



 The average chainsaw injury requires 110 stitches.

 The two most common places for injuries are the front left thigh and the back of the left hand.

 One in five chainsaw injuries is from kickback.

 Kickback is the single greatest cause of injury to chainsaw users.

 Medical costs for chainsaw injuries amount to around 350 million dollars per year.

 Kickback, binding, and pull-in cause the most injuries from chainsaws.

Source: Centers for Disease Control and Prevention

## - INJURIES -

Source: U.S. Product Safety Commission



Head Injuries  
3,418



Upper Body Area  
2,141



Arm and Hand Area  
17,994



Leg Area  
16,348



Foot Area  
2,885



# ATTENTION 2022-2023 SENIORS!

## *Spoon River Electric Cooperative Is Awarding Three \$1,000 Scholarships to High School Seniors*

High school students who are seniors during the 2022-2023 school year and are the son or daughter of a Spoon River Electric member are eligible to apply for a \$1,000 Scholastic Scholarship, a \$1,000 Honorary Scholarship, and the \$1,000 Scott Parrish Memorial Scholarship, which will be awarded at this year's Annual Meeting.

Please fill out the form at the bottom of the page and return it to the Cooperative to participate. Applications must be turned in by **May 12, 2023** to be considered. Please see official rules and descriptions of scholarships below.

### OFFICIAL RULES


- **Applying students and their parent/legal guardian must be present at the Annual Meeting to win.**
- Students must be a son or daughter of a Spoon River Electric Cooperative Member.
- Students must be a high school senior during the 2022-2023 school year and begin college undergraduate studies in the 2023-2024 school year. Students must plan on attending a two-year or four-year accredited college or university, including vocational/technical schools.
- Scholarship winners must be full-time students (at least 12 hours) during the 2023-2024 academic year.
- Scholarships are for one year and are non-renewable.
- Past Spoon River Electric Cooperative scholarship winners are not eligible to receive another one.

### SCHOLASTIC AND SCOTT PARRISH MEMORIAL SCHOLARSHIPS

- The Scholastic and Scott Parrish Memorial Scholarships will be awarded based on an application detailing GPA, college entrance test scores, work and volunteer experience, participation in school and community activities, and a biographical statement.
- Semi-finalists will be notified by mail with a time and place for a personal interview.
- Those not chosen as semi-finalists for the Scholastic and Parrish Scholarships will be automatically placed in the Honorary Scholarship drawing.

### HONORARY SCHOLARSHIP

- The Honorary Scholarship will be awarded by a drawing as students are recognized at the Annual Meeting.
- All applicants are eligible for the Honorary Scholarship drawing except the Scholastic and Parrish Scholarship winners.

	<h2>Scholarship Participation Request</h2>
Name of Student _____	Return To: Taryn Mellert Spoon River Electric Cooperative PO Box 340 Canton, IL 61520 647-2700
Address of Student _____	
Name of Parent/Guardian _____	
Telephone Number _____	