

Sharing Success donations

Through our participation in CoBank's Sharing Success Program, we were able to provide donations to support four local community organizations. We are a member of CoBank, a cooperative lending facility who matches donations made to four local nonprofit charitable organizations selected by our board of directors. An application was available on our website in the spring, and organizations are encouraged to look for the program to be available again next year.

Athens Area Food Pantry

A \$3,500 total donation will support the pantry's purchase of needed items from Central Illinois Foodbank at a discounted rate. The pantry serves income-eligible households in the Athens Community School District with distributions the third Saturday and following Monday each month.

Front row from left: MEC President Warren Goetsch and General Manager Alisha Anker, Linda Pedigo, Marie Basso, Sue Brune and Pennie Robertson. Back row: Tom Brune, Rich Reed, Margaret Oliver and Linda Wasilewski. "The Board of Directors recognizes the important role food pantries have in their communities, and we are pleased to support this group of hardworking volunteers as they seek to fill this need in Athens," says Anker.

Niantic Christian Church's Sangamon Valley Backpack Program

A \$6,000 total donation was made to the program, now in its 22nd year of providing backpacks and school supplies to students of the Sangamon Valley School District. This year more than 225 students benefited.

From left are committee member Kyleigh Covi, volunteer Stacy Marksbury, MEC General Manager Alisha Anker, MEC Director Don McMillan, volunteers Melissa Ebken, Debbie Moore and

Amy Craig, Committee Chair Molly Stahl, and committee members Breah O'Laughlin and Kristen Hunt.

"It was wonderful to see the excitement of the students choosing their bookbags full of supplies for the upcoming school year. We are pleased to have been able to help this group continue their work to ensure each student is set up for a successful year," says Anker.

Petersburg's Town and Country Women's Club (TCWC)

A \$7,500 total donation to TCWC supported phase one, new fencing and gates, of the club's three-phase plan to revitalize the Jaycee Park in Petersburg.

From left MEC Director Dennis Ryan and General Manager Alisha Anker presented the donation to TCWC members Alissa Bilyeu, Trisha Rebbe and Whitney Canterbury at the co-op's annual meeting of members on Aug. 4.

"We know the new park will be utilized by many of our members, their families and the entire community for generations to come, and we are happy to play a small role in helping it come to life," says Anker.

Virginia Christian Women's Fellowship

A \$3,000 total donation supports the group's summer lunch program, which supplies free lunches for 12 weeks to children in the Virginia school district. This summer they fed 115-120 children each week.

MEC Director Jodine Tate and General Manager Alisha Anker presented the donation to a group of volunteers on their final packing day of the summer.

"The continued dedication of this group of volunteers to fill a need in their community is admirable, and we are pleased to support this program, particularly as food costs have continued to rise this summer," says Anker.



Athens Area Food Pantry



Niantic Christian Church's Sangamon Valley Backpack Program



Town and Country Women's Club (TCWC)



Virginia Christian Women's Fellowship



Focused on YOU.

Electric cooperatives were created to serve their members. Because we're a co-op, we're able to adapt to our community's unique needs. That's the power of co-op membership.

OCTOBER IS NATIONAL CO-OP MONTH

LIHEAP

The Low Income Home Energy Assistance Program (LIHEAP) could help pay your bill. Contact your local agency as soon as possible for eligibility requirements.

MCS Community Services

Cass/Morgan County
217-243-9404

Community Action Partnership of Central Illinois

Logan/Mason/Menard County
217-732-2159 • capcil.info

Decatur-Macon County Opportunities Corporation

Macon County
217-428-2193 • dmcoc.org

Sangamon County

217-535-3120 • co.sangamon.il.us

Tazewood Community Services

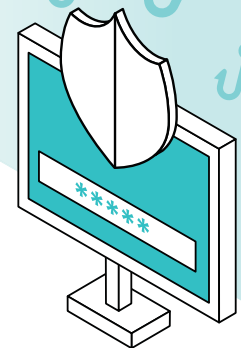
Tazewell County
309-694-4391 • tazewoodcs.org

See Yourself in Cyber.

October is Cybersecurity Awareness Month

Improve your cyber hygiene by doing these four things:

1. Enable multi-factor authentication
2. Use strong passwords and a password manager
3. Update software regularly
4. Recognize and report phishing attacks



Member Name: _____ Phone: _____

Account # or Meter #: _____

Child's First Name: _____

Gender: _____

Age (12 or under): _____

Coat Size: _____

Pant Size: _____

Shoe Size: _____

Other Wish Item: _____



Menard Electric Cooperative's Member Angel Tree

Is your child hoping for a new toy? Maybe they need a new coat or pair of boots? We want to make wishes come true for our members' children ages 12 years old or younger this Christmas. If you need help fulfilling your child's Christmas wish, please submit this angel to us by Nov. 23.

We'd like to fulfill as many wishes as possible, so we ask that you list only one wish item per child and that the expected value be \$30 or less.

Menard Electric's Christmas Committee is comprised of employees who hold fundraising events throughout the year. These donations will be used to fulfill the wishes.

Sadly, we cannot guarantee we will have the funding to fulfill each and every wish. We will do our best. If any members wish to fulfill an Angel's Wish, we welcome the assistance. Please contact the co-op.

Santa and his reindeer will be delivering wishes the week of Dec. 12.

Wishers must fill out all the information on the angel and return to the co-op by Nov. 23. We suggest you mail it with your bill; however, you can also use the drop box at the co-op office or mail separately to P.O. Box 200, Petersburg, IL 62675.

Board highlights

July 26, 2022

For full minutes visit menard.com
or contact the office.

- All Directors present except President Jay Frye; General Manager Alisha Anker and Attorney Charles Smith present. Vice-President Warren Goetsch presided.
- Anker reviewed results of 2021 Key Ratio Trend Analysis (KRTA) report.
- Approved Resolutions authorizing amendment and restatement of NRECA 401K & RS plans.
- Anker reviewed monthly & YTD financial operating report, balance sheet & financial trends. Operating margins YTD as of 6/30 were \$1,271,579 compared to \$763,667 last year; equity at 42.85%; 12-mo TIER 3.11 & DSC 1.83.
- Anker reviewed operations report w/109 incidents; longest duration outage 439 min affecting 1 member due to underground cable; largest # affected by single outage 301 due to substation equip. Safety report listed one no lost time injury.
- Certified Goetsch as Delegate and Ryan as Alternate for NRECA Region V meeting.
- Board entered into executive session; reconvened.
- Next Mtg 08/23/22.



BudgetWise

Take the guesswork out of monthly budgeting with our BudgetWise program options.

See details at www.menard.com, email info@menard.com or call 800-872-1203 for details.

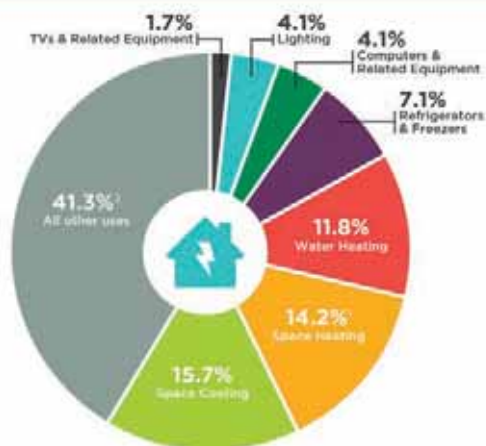
Contact us today to be added to our Budget Billing fall cycle!

How Americans Use Electricity

The latest data from the U.S. Energy Information Administration shows the combined use of clothes washers and dryers, dishwashers, small appliances and other electrical equipment (noted as “all other uses”) accounts for the largest percentage of electricity consumption in American homes.

Source: Energy Information Administration 2021

*Excludes distribution for heat and cooling; furnace fans and boiler pumps, dryers, microwave ovens, compact washers and dryers, deodorant, hairbrushes, heating elements, and motors.



KiloWatt Korner



KW

This month we celebrate the arrival of all our fall favorites. Whether you look forward to football, hanging with friends around a fire or attending local fall festivals, they are all on the horizon, and are all made better with your favorite fall foods. Grab your hoodies and recipe books and let's get cooking! We compared two popular outdoor electric cookers for dinner's meaty highlight – a Bradley smoker and a Traeger grill.

Seeking to make pulled pork sandwiches, we fired up a standard-sized Bradley Electric Smoker. Utilizing the hickory bisquettes, we achieved smoky perfection in three short hours. The smoker drew about 454 watts throughout the cook time and used 1.16 kWh total, costing just 14 cents in electricity. A little BBQ sauce and some sides, and we were ready for the game.

On a quest for the perfect Friday night outdoor dinner, we grilled chicken thighs on our electric Traeger model Ironwood 650. For those unfamiliar, the Traeger grill burns compressed hardwood pellets. Our total grill time was just 70 minutes. Upon ignition, the grill drew 106 watts immediately, but the usage ramped down smoothly until the grill reached the ideal 450° cook temp. During the 30-minute cook time and the 25-minute cooldown, the unit consistently used just 13 watts. All in, the meal required only 27 watt-hours of total electricity, costing just one-third of one cent. Let's assume the family uses their Traeger about five nights each week, that equates to the joy of grilled perfection for one month costing 6 or 7 cents.

Korner Recommendation: Add some friends, side dishes and cool evenings, and you have perfect fall feasts.