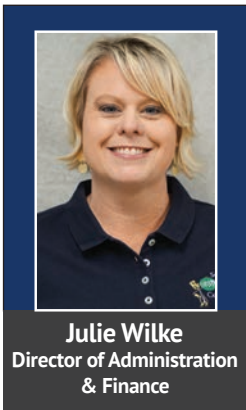


# JAMUP

published by Southern Illinois Electric Cooperative, Dongola, Illinois

A Touchstone Energy® Cooperative 

## SIEC offers many billing options



**S**outhern Illinois Electric Cooperative (SIEC) has many options for members to pay their electric bill. Payments can be mailed, paid at the Dongola office during

regular business hours or deposited in our 24-hour night deposit boxes located at the Dongola and Massac County offices. You can also make a payment over the phone by calling 1-800-762-1400. Credit and debit cards as well as E-Checks are accepted. We accept MasterCard, VISA, Discover, and American Express. Additionally, we offer the following options for you to consider:

### Automatic Bank Draft/Credit Card Charge

If you would like to save time, checks and postage each month, you may want to consider Automatic Bank Draft/Credit Card Charge. This service enables you to setup auto payment using your checking/savings account or credit/debit card. Auto pay can be setup by contacting the office or through the SmartHub app. Payment will be setup to auto pay on the due date.

### Budget Billing

This service makes managing your cash flow easier by providing predictable monthly payments. Utility bills are usually highest during the winter and summer months, but budget billing

avoids these highs by creating a consistent monthly payment based on your 12 months of electric usage. Because of this, members do need to have at least 12 months of usage history at their current residence. The first 11 monthly payments will be the same. On the 12th month, the cooperative offers a “catch-up” month. This is where any credit or balance due on your account for the budget year-end is reflected.

### Pay As You Go

This option allows you to pay for electricity as you use it. Payments can be made when you want and in the amounts you want. A credit balance must be maintained. Instead of receiving a traditional paper bill that is generated once each month, usage is calculated daily. You will receive notification by text or e-mail when the account is getting low. There are no surprises at the end of the month. SIEC will install a smart meter so that members know how much electricity is being used by monitoring their account online. Members never pay a late charge. Payments can be made online or in the office. If it would be easier to make daily, weekly, or bi-weekly payments rather than one larger monthly payment, then this may be a good option for you. Statistics indicate this type of program helps to lower electric consumption since members are more aware of their usage.

### SmartHub

SmartHub is a free online bill payment option that allows our members to securely view and pay their bill from the website as well as from a smart phone or other mobile device. You can pay your bill 24 hours a day, 365 days a year

at your convenience. Perhaps the most useful feature is the ability to track your energy usage in greater detail. This can be beneficial to identify high usage trends. You can see your daily usages to help determine how you are using electricity. Members can view their usage and billing, manage payments, and notify us about service issues. You can also sign up for paperless billing within SmartHub as well as opt in for e-mails and/or text messages. The following QR codes can be used to download the app.

### Pay Now

For those members who do not want to create an online account for SmartHub, you can use a feature called Pay Now. This is an easy option that allows you to pay your bill using just your account number and last name. This option can be accessed via the SIEC website.

For questions involving any of these options, contact our Billing Department during business hours at (800) 762-1400. Access more billing information on our website [siec.coop](http://siec.coop) under the My Account tab.



## 2022 Youth to Washington Tour Winners



**Olivia Larrison**  
Massac County High School

Olivia is currently working on her Associate's Degree, through Shawnee Community College. Her plans are to then transfer to a 4-year university and pursue a Bachelor's Degree in Environmental Studies. She is currently a member of MCHS Band, Math Team, Drama Club, HOSA, Lads To Leaders, while balancing a part-time job.

*Congratulations, Olivia!*



**Bennett Neely**  
Massac County High School

Bennett plans to continue furthering his education at a college or university while deciding what career path he'd like to take. He is a member of MCHS Golf Team, Soccer Team, Student Council, KEY Club, Band, Massac County Drug Awareness Coalition, and serves as Junior Counselor & life-guard at Union Baptist Church Camp during the summer.

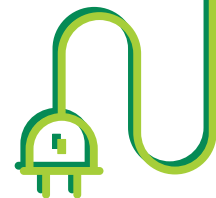
*Congratulations, Bennett!*

## Energy Efficiency Tip of the Month

Even in summer months, adding insulation to your attic can keep your home more comfortable and more comfortable and save energy used by your cooling system. If your attic insulation is level with or below your floor joists (meaning you can easily see your joists), you should add more. If you can't see any of the floor joists because the insulation is well above them, you likely have enough insulation.

Attic insulation should be evenly distributed with no low spots. Make sure the areas along the eaves are adequately covered.

Source: energystar.gov

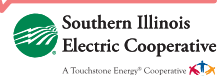
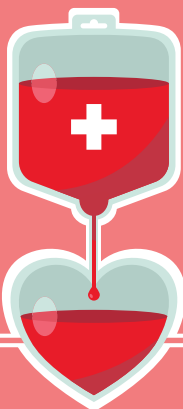


# BLOOD DRIVE!

Wednesday, May 11 from 10 a.m.-3 p.m.

Egyptian School • 2023 Diswood Rd • Tamms, IL

SIEC members who donate will receive one \$10 bill credit per member household!



## Nominating Committee to Meet May 23, 2022.

Members to serve on the 2021-2022 Nominating Committee were appointed by Randall Rushing, President of the Board of Directors, at the 2021 Annual Meeting of Members held October 7, 2021. The committee will meet at the cooperative headquarters, 7420 U.S. Highway 51 South, Dongola, Illinois, at 6:15 p.m. on Monday, May 23, 2022 to consider nominees for election to the board of directors at the 2022 Annual Meeting of Members.

The following committee members were appointed to the 2021-2022 Nominating Committee to represent their respective counties:

### Alexander County:

Delegate: Larry D. Houston, 715 Railroad Street, Tamms, IL 62988

Alternate: Tim J. Pierce, 27753 State Highway 3, Thebes, IL 62990

### Johnson County:

Delegate: Linda M. Wood, 4145 Indian Point Road, Vienna, IL 62995

Alternate: Nancy Breedon, 2390 Lick Creek Road, Buncombe, IL 62912

### Massac County:

Delegate: Ashley Thompson, 85 Wesley Drive, Metropolis, IL 62960

Alternate: Randy Wilke, 1389 Karnak Road, Karnak, IL 62956

### Pulaski County:

Delegate: Craig Bradley, P.O. Box 16, Karnak, IL 62956

Alternate: Danny J. Thurston, 819 Sandusky Road, Pulaski, IL 62976

### Union County:

Delegate: Glenn Russell Heisner, 3605 Nash Road, Anna, IL 62906

Alternate: Bruce Mosby, 1215 Bauer Road, Jonesboro, IL 62952

The by-laws of the cooperative provide the nominations to the board of directors may be made by: (1) nominating committee, (2) petition received not less than 45 days prior to the actual meeting, signed by 15 or more active members, or (3) an active member from the floor at the annual meeting. The three-year terms of the directors are expired alternatively so that each year elections are held for a portion of the board. At the 2022 Annual Meeting, elections will be held for a director from each of these three counties: Alexander, Pulaski and Union County.

## Selecting a tree? Know its mature height before deciding where to plant

If you are considering planting a tree, carefully select its location before you begin digging. Also, call 811 before you break ground to get underground utilities marked. If trees are planted in the wrong location, they can be expensive to maintain and even dangerous. Southern Illinois Electric Cooperative and Safe Electricity offer tips on how to pick an optimal location.

A mature height of fewer than 15 feet is recommended if planting near lines. Some trees that are generally not tall enough to interfere with lines include crabapple, honeysuckle, juniper, flowering dogwood and hawthorn.

Trees should never be planted directly under power lines, near poles or too close to electrical equipment.

Once you have a tree selected, call 811 before putting a shovel to the ground. The "Call Before You Dig" number is a free service that locates and marks public underground utilities in your yard or on your land. Call several business days before you plan to dig. Locators will mark public underground utilities such as electric, gas, water, cable and fiber. The service does not mark privately owned lines or pipes.



### Other tree tips

- If your established trees are growing into power lines, contact us to ask about them. In some cases (depending on the tree's location), we will come out and trim the tree. If it is your responsibility, do not take on the task yourself. Only tree trimmers who are line-clearance certified are legally allowed to prune and trim trees within 10 feet of power lines.
- It is important to have trees trimmed. Limbs can fall on power lines during bad weather, resulting in power outages or blinking lights. Broken or drooping limbs could also cause a fire.
- Tall-growing trees with a mature height greater than 45 feet should be planted at least 45 feet away from lines to avoid future pruning. Some of these trees include oak, white and blue spruce, most pines and most maples.
- Be sure no one climbs a tree near power lines. If branches are touching the wires, the tree could be energized. Even branches that do not touch power lines could become energized if a child's weight is added. In addition, a child could climb high into the tree and be able to reach the line.

**For more information about electrical safety, visit [SafeElectricity.org](http://SafeElectricity.org).**



## Member prize

In this issue of the JAMUP, we printed the names of three SIEC members who are eligible to receive a \$10 credit toward their utility bill. If you find your name printed in this center section and it's not part of the story, call Brent with your account number at **800-762-1400** to claim your prize.

### SIEC Board of Directors

Randall Rushing  
(President)..... Massac Co.  
Bill Littrell  
(Vice President)..... Union Co.  
Scott L. Ury  
(Secretary-Treasurer)..... Union Co.  
Steve Heisner.....Pulaski Co.  
Lamar Houston, Jr.....Alexander Co.  
David Martin.....Massac Co.  
Scott Miller.....Alexander Co.  
Toni L. Snell.....Johnson Co.  
Jerry P. Thurston.....Pulaski Co.

Ronald E. Osman (Attorney)  
General Manager David A. Johnson  
Brent Goforth (Editor)

For Outages Call:  
800-762-1400 • 618-827-3555

### Southern Illinois Electric Cooperative

7420 U.S. Highway 51 South  
P.O. Box 100  
Dongola, Illinois 62926

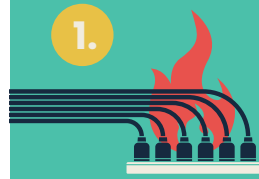
618-827-3555

Office hours: 8 a.m. — 4 p.m.

[www.siec.coop](http://www.siec.coop)

# ELECTRICITY 101

To stay safe around electricity, start with these **SEVEN** basic tips:



1.

### DON'T OVERLOAD OUTLETS OR CIRCUITS

Plugging in too many items or drawing too much power on a circuit can cause overheating, fire, and damage to devices.



2.

### DON'T USE FAULTY ELECTRICAL CORDS OR PLUGS

Do not use cords that look frayed, worn or cracked. Do not use broken plugs. Never remove the grounding pin from a three-pronged plug.



3.

### HAVE YOUR ELECTRICIAN'S NUMBER IN YOUR PHONE

Most electrical repairs or installations are not DIY projects. Hire an expert to avoid serious injury or wiring problems.



4.

### BE CAREFUL AROUND H<sub>2</sub>O

Never use electricity while standing in damp or wet conditions. Keep all electrical devices away from water, including cell phones that are charging.



5.

### EVALUATE YOUR APPLIANCES

Do not use appliances in disrepair. Older or broken appliances can overheat, start a fire, and cause serious injuries.



6.

### TEST YOUR GFCIs

Outlets near a water source should be equipped with GFCIs, which help prevent shock and electrocution caused by ground faults. Test monthly to make sure they are working.



7.

### MAKE SURE YOUR HOME IS UP TO CODE

Your home should be properly wired and electrically sound. Contact a reputable electrician to evaluate your home.

 Safe  
Electricity.org®