



RuralHILIGHTS

Local News from Rural Electric Convenience Cooperative

RURAL HILIGHTS

Rates remain low

While virtually all aspects of today's cost of living continues to rise, RECC members have enjoyed one of the longest periods of rate stability in recent history. RECC rates are among the best of all Illinois cooperatives and residential rates remain lower than they were in 2009. The trend will continue, as your board of directors approved a PCA reduction (\$0.002 per kWh) for all rate classes in 2022!



Tax credits extended through 2023 and beyond



Carolyn Connolly Rhea

A 26 percent federal tax credit for residential ground source heat pump installations has been extended through Dec. 31, 2022. The incentive will be lowered to 22 percent for systems that are installed in 2023. See our list of local geo contractors on recc.coop for more details.

Carolyn Connolly Rhea recently replaced her old geothermal unit with a new and more efficient model. The Carrier split-system was installed by Snell Enterprise in Virden and will provide years of comfort for her family. Carolyn is eligible for the 26 percent federal tax credit, and she will receive a \$250 rebate from the cooperative. Please contact our office at (217) 438-6197 with any questions concerning RECC rebates.



Drayton Davis, RECC Lineman; Margie Hunt, Franklin Food Pantry and Shelley Crocks, RECC Senior Member Accounts Representative

Franklin Food Pantry selected

Employees of Rural Electric Convenience Cooperative donated \$600 to the Franklin Food Pantry and RECC matched their contributions. Pantry Coordinator Margie Hunt was grateful to receive the donation and said it would help keep the shelves full. The co-op and its employees have made similar donations to food pantries in Pawnee, Raymond, Girard, Waverly, Palmyra, Divernon and Morrisonville. We hope the tradition continues.

Rural Electric Youth Day set for March 29, 2022

High school juniors, now is the time to apply for great trips to Springfield and Washington, D.C.! Rural Electric Convenience Cooperative is sponsoring area students again this year for the popular Rural Electric Youth Day in Springfield and a chance to win a free trip to Washington.

Students will be sponsored by RECC at the Illinois Youth Day program, touring the Capitol and other historic sites and meeting with their state legislators. Two of those students will be selected to attend the Youth to Washington trip, June 17-24, with more than 1,500 young people from around the country. RECC sponsors these trips to encourage students to learn more about our government's operation and about electric cooperatives.

Any junior attending a high school in RECC's service area is eligible for these expense-paid programs. Application request forms will be sent to our local schools, or students can



contact our office. We will mail an application packet and background information directly to the student. The application form includes a summary of the student's school and civic activities and accomplishments, and a brief essay question pertaining to the rural electric program.

Applications must be returned to RECC by February 15, and the students selected for the Illinois Youth Day program will be notified so they can arrange their school schedules around

the trip. Transportation will be provided from Auburn to Springfield and back.

After the day's activities in Springfield, the students will have individual interviews to select two winners for the trip to Washington, D.C. They will be judged on their written application, personal poise and confidence, and demonstrated understanding of the rural electric program. The two winners will travel by bus from Springfield to Washington this summer in one of the best-recognized youth programs in the nation's capital.

Tell your child, grandchild, neighbor or friend about these two super programs sponsored by your electric cooperative and encourage them to apply. They can call our office at 217-438-6197 to ask for an application packet or email a request to recc@recc.coop. Don't let them miss this chance to meet new friends, learn about our government and coops, and have fun!



HAPPY VALENTINE'S DAY

Rebates available for appliances and heating systems

Electric clothes dryer - \$50

Electric range or oven - \$50

Electric water heater - \$250

Add on heat pump - \$100

Heat pump all electric - \$250

Geothermal system - \$250



Dalton Brown completed his apprenticeship and he is now a journeyman lineman. His promotion was official on **November 13, 2021.**

Congratulations Dalton Brown!

RECC LINEMEN 2022

Line Foreman

Bill Hart
Travis Boylen

Journeyman

Shane Norris
Sean Koen
Andrew Boston
Dalton Brown

Apprentice

Matt Evans
Drayton Davis
Mark Bartolozzi

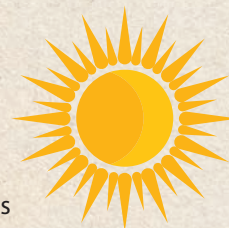
RECC's Renewable Energy Policies

The maximum size of eligible renewable systems that can be connected under RECC's Net Metering Policy is 10 KW (D.C.). The total capacity of all wind, solar or other renewable systems that can be connected to the cooperative's lines is 5 percent of our annual peak demand (1,280 KW).

RECC's Net Metering Policy and Interconnection Policy is available at www.recc.coop.

Important: Please call RECC before installation

If you're considering a solar system, remember that it is your responsibility to contact RECC while you are still in the design phase. Please contact Chris Bridges if you have any questions (217-438-6197).



Outdoor Christmas Lighting Contest




Mike and Jennifer Aumann

Winners

Michael Aumann
Pawnee \$200
Roger Cacciatori
Virden \$150
Tom Schreyer
Chatham \$75
Jerry Honigman
Waggoner \$50
Sherri Klootwyk
Glenarm \$25

Rural Electric Convenience Cooperative

3973 W. State Route 104
P.O. Box 19 • Auburn, IL 62615
(217) 438-6197
e-mail: recc@recc.coop
www.recc.coop

Find us on 

Board of Directors

Mel Repscher, Chairman
Chris Wilcox, Vice Chairman
Clayton Bloome, Secretary/Treasurer
Jimmy L. Ayers, Asst. Sec.-Treasurer
Cassie L. Eigenmann
Andy Goleman
Thomas Hart
Garry Niemeyer
Lou Weitekamp

President/CEO

David Stuva

Editor

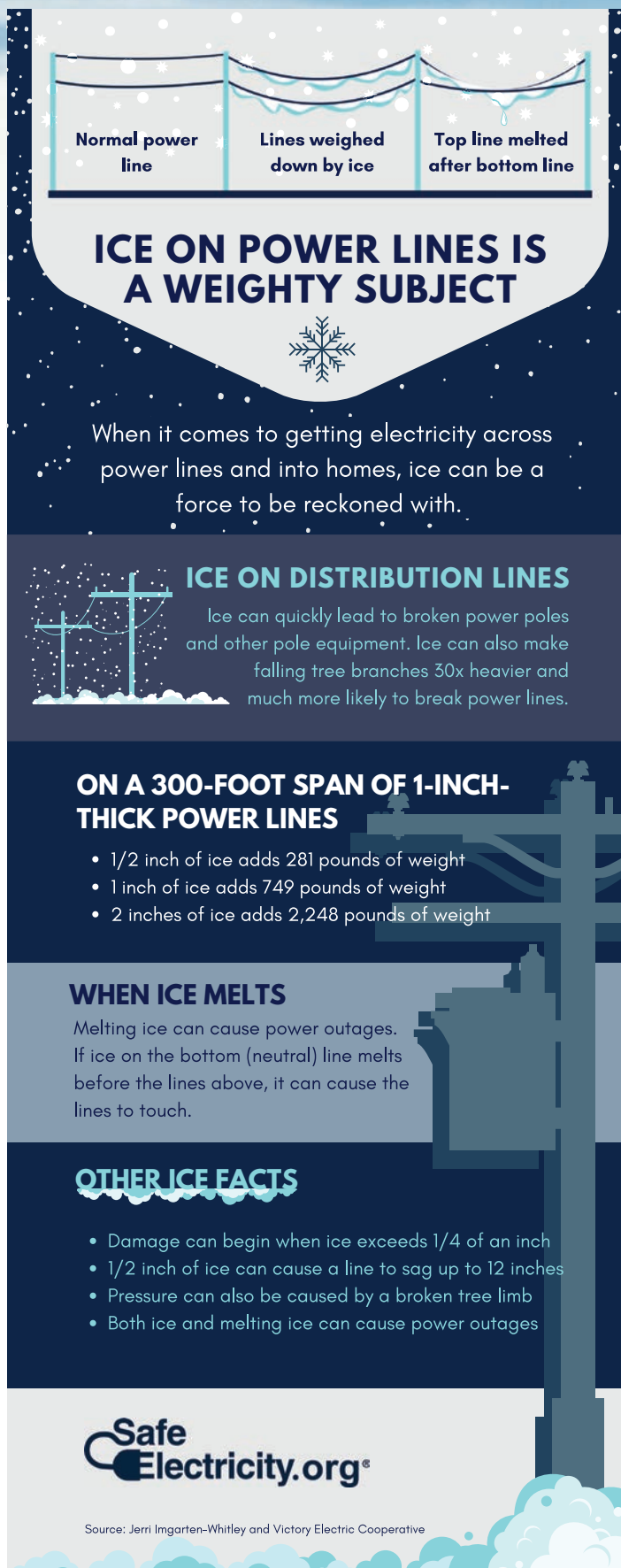
Jeff Lancaster

See our web page for monthly
Board meeting reports.

Payment Options

- At our office front desk or outside drop-box
- Mail to: PO Box 19, Auburn IL 62615
- Set up recurring bank draft or credit card payments
- Online, with Pay Now from our website
- Use SmartHub portal, online or mobile app
- By phone to our office, using credit card or checking account
- By phone using automated payment (217) 438-6197

Your Touchstone Energy® Cooperative 



The infographic is set against a dark blue background with white snowflakes. At the top, three panels illustrate the effects of ice on power lines: 'Normal power line' shows a straight line; 'Lines weighed down by ice' shows a sagging line; 'Top line melted after bottom line' shows the top line broken and the bottom line sagging. Below this is a large white banner with the title 'ICE ON POWER LINES IS A WEIGHTY SUBJECT' and a snowflake icon. The text explains that ice can be a force to be reckoned with. A section titled 'ICE ON DISTRIBUTION LINES' shows a power pole and explains that ice can lead to broken poles and heavier falling branches. Another section titled 'ON A 300-FOOT SPAN OF 1-INCH-THICK POWER LINES' lists the weight added by ice. A section titled 'WHEN ICE MELTS' explains that melting ice can cause power outages. A section titled 'OTHER ICE FACTS' lists additional dangers. The bottom features the 'Safe Electricity.org' logo and the source: 'Source: Jerri Ingarten-Whitley and Victory Electric Cooperative'.

Normal power line Lines weighed down by ice Top line melted after bottom line

ICE ON POWER LINES IS A WEIGHTY SUBJECT

When it comes to getting electricity across power lines and into homes, ice can be a force to be reckoned with.

ICE ON DISTRIBUTION LINES

Ice can quickly lead to broken power poles and other pole equipment. Ice can also make falling tree branches 30x heavier and much more likely to break power lines.

ON A 300-FOOT SPAN OF 1-INCH-THICK POWER LINES

- 1/2 inch of ice adds 281 pounds of weight
- 1 inch of ice adds 749 pounds of weight
- 2 inches of ice adds 2,248 pounds of weight

WHEN ICE MELTS

Melting ice can cause power outages. If ice on the bottom (neutral) line melts before the lines above, it can cause the lines to touch.

OTHER ICE FACTS

- Damage can begin when ice exceeds 1/4 of an inch
- 1/2 inch of ice can cause a line to sag up to 12 inches
- Pressure can also be caused by a broken tree limb
- Both ice and melting ice can cause power outages

Safe Electricity.org®

Source: Jerri Ingarten-Whitley and Victory Electric Cooperative