



Egyptian Electric News

1005 W. Broadway • PO Box 38 • Steeleville, IL 62288 • 800-606-1505 • www.eeca.coop

DECEMBER 2016

HAPPY HOLIDAYS

The Directors and Employees of Egyptian Electric Cooperative wish you a joyous Holiday Season and New Year filled with peace and happiness!

Our offices will be closed Dec. 26 and Jan. 2 for the holidays.

Directors

Randall Campbell
Larry Ebers
Allen Haake
Paul Hicks
Ken Jarrett
Gilbert Kroening
Kevin Liefer
Steve Prest
Paul Pyatt

Employees

Andy Ahner
Brian Alexander
Scot Alms
Gretchen Bame
Kevin Barlow
Sheila Becker
Kendall Bunselmeyer
Mike Chamness
Terry Cochran
Glen Degenhardt

Travis Deterding
Bryan Diercks
Tim Edmonds
Mike Ellis
Tom Ernsting
Ronnie Gill
Sharon Gray
Scott Gremmels
Jim Grothaus
Brooke Guthman
Shane Hermetz

Robbie Knop
Adam Korando
Bill Korando
Cindy Krisby
Cody Lee
Julie Loesing
Dennis Luehr
Matt McElroy
Carla McNeely
Tillie Nance
Arthur Pontow

Darin Prange
Jim Riddle
Mike Smith
Roger Stuva
Bart Swisher
Kay Taylor
Jeremy Thies
Eric Turner



1005 W. Broadway • PO Box 38
Steeleville, IL 62288

10169 Old Highway 13
Murphysboro, IL 62966

800-606-1505
Office hours 8 a.m. – 4:00 p.m. M-F
www.eeca.coop

Board of Directors

Ken Jarrett, President
Steve Prest, Vice-President
Paul Hicks, Secretary-Treasurer
Randall Campbell
Larry Ebers
Allen Haake
Gilbert Kroening
Kevin Liefer
Paul Pyatt

Jim Riddle

*Executive Vice President and
General Manager*



Choose your payment option!

- At our office front desk or outside drop-box
- Mail to: PO Box 38, Steeleville, IL 62288
- Set up recurring bank draft or credit card payments
- Use SmartHub portal, online or mobile app
- By phone to our office, using credit card or checking account

Giving back is the co-op way

By Meghaan Evans

As highlighted last month and every October, cooperatives across the globe adhere to the same Seven Cooperative Principles that guide all of our decisions—from how we run the co-op, to how we engage with our local communities. Concern for community is the seventh principle, and it is one that all employees value year around. But during the holiday season, concern for community seems especially important.

Electric cooperatives have a proud history of giving back. Throughout the year we offer assistance and opportunities to our youth, through our Classroom Empowerment Grant, Annual Meeting Scholarship and Youth to Washington programs. Through this month, we are hoping to establish new tradition, by supporting various local community collections. In January and February, we will again implement our Lite-for-a-Bite program, which we will exchange LED light bulbs for food pantry items at our offices. This is how Egyptian Electric members help us give back.

So many families go without on a daily basis and struggle to make ends meet. This struggle can be especially hard during the holiday season. There are many ways you can give back to the community that go beyond dollar donations. Take some time to go through your closets and

find clothes that no longer fit or have lost their use. Bag those items up and take them to your local Salvation Army, Goodwill or church clothing drive. Volunteer at a local food pantry or toy drive, deliver meals to the sick and the elderly or simply make a meal for a neighbor in need. No matter how great or small the act, every time we give back, we strengthen our community. So take the time to give back this holiday season. You'll be glad you did.

Energy Efficiency Tip of the Month



Be merry and bright, but don't let your holiday lights shine all night. Save money on your electric bill by installing a light timer for your decked out home. It can help lower your electric bill and reduce energy consumption. Use a manual timer plugged into an electrical outlet to automatically turn lights on and off as scheduled.

Source: energystar.gov

Share the spirit

Accepting now at both office locations, Steeleville or Murphysboro, you can bring your community collection donations! Egyptian Electric Cooperative is collaborating with our local charitable organizations in collecting unexpired food, coats of all sizes and new or like new toys. Our office donations will benefit the Murphysboro Key Club's Share the Spirit toy/coat/food drive, Peace Lutheran Church in Steeleville's coat drive, and Our Lady of Lourdes in Sparta's food drive in their holiday season collections. We, each of the organizations and the community thank you!

What is ACH?

ACH is an acronym used for the term Automated Clearing House. This is a payment service method Egyptian Electric offers to our membership as a hassle-free alternative to monthly check writing. Maybe you wonder, why should you consider signing up for ACH?

- Save money on postage and cost of checks
- Eliminate late or missed payments
- It's free
- Avoid the hassle

It can be used to pay your monthly statement from your checking account, savings account or by credit or debit card. The funds will automatically be transferred to Egyptian Electric on your due date. You will continue to receive a paper bill invoice, unless you opt out to only receive it electronically. The statement will still show your energy use and the amount due; your bank statement will show the amount and date of the transfer. To enroll, simply sign up through SmartHub or complete the authorization form found on page 9, in our office or on our website. Continue to pay your monthly account until your statement shows "BANKDRAFT-DO NOT PAY" OR "CREDIT CARD-DO NOT PAY." Please notify us if there are any changes to your bank account or debit/credit card, including name, account number or expiration date. Your account is subject to applicable service fees by both Egyptian Electric and your bank if there are insufficient funds in your account. A late fee could be charged in the event your bank or credit card company refuses to authorize a payment. If your card has expired or you are issued a new card number, please call our office at 1-888-544-8181 during normal business hours and speak to a Customer Service Representative with updated information.

2017 IEC Scholarships

The IEC Memorial Scholarship Program will award ten \$2,000 scholarships to high school students entering college in 2017.

- 5 Five scholarships will be awarded to students who are sons or daughters of an Illinois electric cooperative member receiving service from the cooperative.
- 3 Three scholarships are reserved for students enrolling full-time at a two-year Illinois community college who are the sons or daughters of Illinois electric cooperative members, employees or directors.
- 1 One scholarship, the Earl W. Struck Memorial Scholarship, will be awarded to a student who is the son or daughter of an Illinois electric cooperative employee or director.
- 1 One scholarship, the LaVern & Nola McEntire Lineworker's Scholarship, will be awarded to a student to attend the lineworker's school conducted by the Association of Illinois Electric Cooperative in conjunction with Lincoln Land Community College in Springfield, Ill.

The scholarship information can be found on our homepage at www.eeca.coop. The deadline to apply is December 31, 2016.

Fletcher elected as President of national board



Steve Fletcher, Manager and Operator for the Washington County Water Company (WCWC), of Illinois is elected as the

President of the National Rural Water Association (NRWA) during meetings held at the WaterPro Conference in Orlando, Fla. He was inaugurated during a luncheon on Sept. 14 and will lead the executive board. The WCWC is a not for profit rural water system that serves 5,800 customers in seven counties across southern Illinois, and owner/operator of Egyptian Water.

"My original board of directors encouraged me to participate in water organizations to promote our system," Fletcher said. "I believe that this is the pinnacle of that effort for myself and the Washington County Water Company."

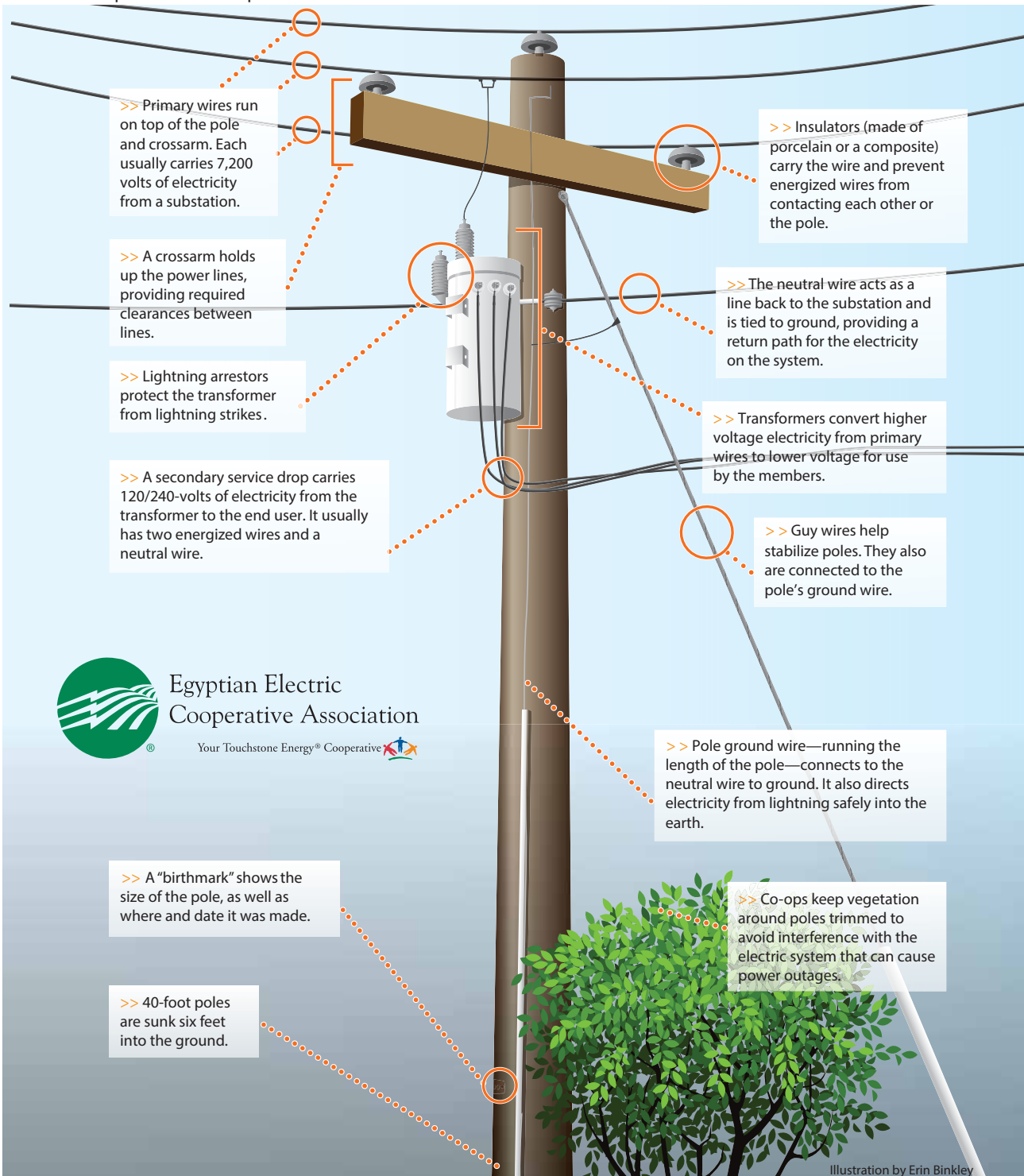
Fletcher has been the Manager and Operator of WCWC since 1981. He has been a member of the Illinois Rural Water Association since 1986, was elected as the state director to the NRWA board in 1999 and to the NRWA executive board in 2008. In addition to his work in rural water, Fletcher has also been a police officer for Nashville, Ill. since 1987 and serves as the Chief Deputy Coroner for the County of Washington.

Steve Fletcher will serve as president of NRWA, the nation's largest water utility association with over 30,000 members. He will be one of the voices representing Rural Water at industry events, with government agencies and in the halls of Congress.

"I am truly humbled and honored to be NRWA President," he said. "There is nothing above being president of the greatest water organization in the country, maybe even the world. I will work hard to continue the success that my predecessors have achieved."

What's on that pole?

They look simple, but Egyptian Electric's poles include a lot of engineering for reliability and safety. This illustration shows basic equipment found on 3-phase power distribution poles. Not all poles have all this equipment, while some have more devices for protection and operational control.



Egyptian Electric
Cooperative Association


Your Touchstone Energy® Cooperative 

Illustration by Erin Binkley