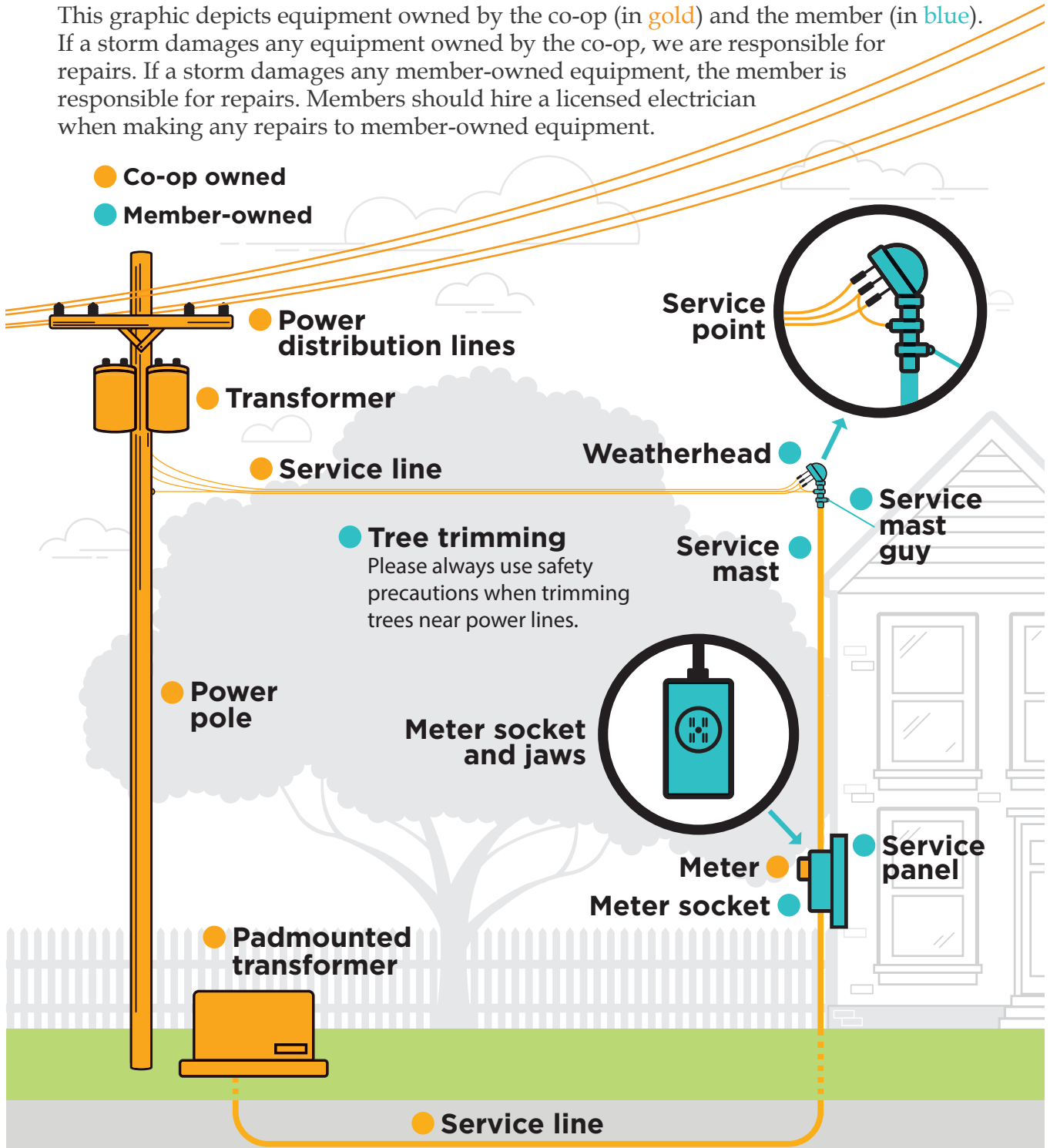


Who Owns What?

Electric Co-op Owned Equipment vs Member-Owned Equipment

This graphic depicts equipment owned by the co-op (in gold) and the member (in blue). If a storm damages any equipment owned by the co-op, we are responsible for repairs. If a storm damages any member-owned equipment, the member is responsible for repairs. Members should hire a licensed electrician when making any repairs to member-owned equipment.

- Co-op owned
- Member-owned



Note: This graphic depicts overhead and underground service.
Please be aware of which type of service you receive at your home or business. Some exceptions may apply.