

THE GRID

P.O. Box 709
(104 Dewitt Ave., East)
Mattoon, Illinois 61938

Phone: 217/235-0341
or Toll-Free:
1-888-661-CMEC (2632)
Office hours:
Monday-Friday
7:30a.m. - 4:30p.m.

Chairman

Kent Metzger.....Gays

Vice Chairman

Bill VoylesSullivan

Secretary

Andrew FearnCharleston

Treasurer

Thomas Sherman ...Humboldt

Directors

Jeffery HudsonCharleston

Mike Love..... Mattoon

Colt Roderick Trilla

President/CEO

Amy Borntreger

To Report an Outage
call #888-661-2632

Send your current email
to info@cmec.coop
for a chance to win a
\$50 bill credit



Your Touchstone Energy® Cooperative

Sigrist Awarded Randall Beasley Memorial Scholarship

Garrett Sigrist of Arcola has been selected to receive the first Coles-Moultrie Electric Cooperative Randall Beasley \$1,000 Memorial Scholarship. He is the son of Michael and Lisa Sigrist and will be attending UIUC in the Grainger College of Engineering program.

This scholarship honors long time employee Randall Beasley who served the cooperative from 1948-1988 and retired as the Director of Member Services. He was a power use advisor and editor of "Hi-Lites on the Hi-Lines" advising members about wiring equipment, heating, plumbing,

air conditioning and insulation. Beasley also had a column each month called "Watts My Line."

Beasley served in the Navy during World War II and was known for his thoroughness and technical knowledge. This scholarship was made possible by his daughter, Sue Meyer, of Lerna.



Meet Your Billing Member Service Representatives (MSRs)



THEN

Left to right: Betty Icenogle, Virginia Daily, Jane Kenters and Mary Wigton



NOW

Left to right: Heather Hakinan, Julie Butler, Kelsey Hawkins and Summer Smith

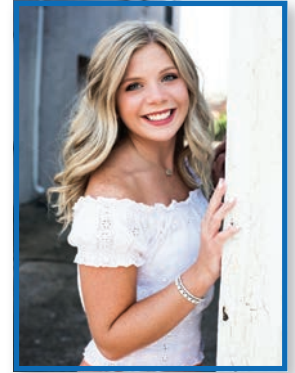


Hawkins Receives Illinois Electric Cooperative Scholarship

Ryleigh Hawkins, of Mattoon, has been selected to receive the 2021 Earl W. Struck Memorial Scholarship (\$2,000).

This is one of 12 Illinois Electric Cooperative scholarships awarded each year administered by the Illinois Community College System Foundation, ICCFS. Earl Struck served as president/CEO of the Association of Illinois Electric Cooperatives from 1994-2006.

Ryleigh is the daughter of Coles-Moultrie Electric Cooperative's Member Service Representative Kelsey Hawkins (John) and plans to attend Lake Land College in the fall.



Welcome New Lineman

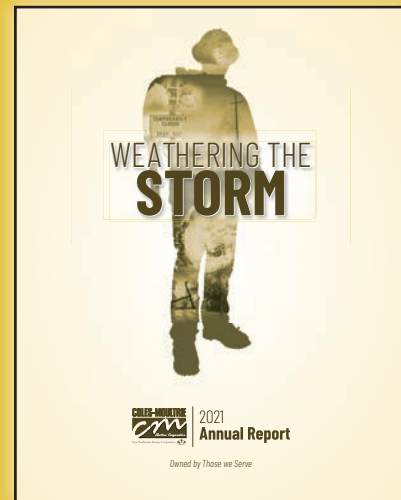
Ty Lytle grew up in Mattoon and started his career working on the road in Sullivan. He came to us from Local Union #9 in Chicago and is happy to have a much shorter commute.

2020 Capital Credits

Your capital credits for the year 2020 have been allocated on your account. The notification was printed on the bills mailed out mid-June.

CMEC is member owned and not-for-profit, meaning excess margins are earned each year for all members based on their billing revenue. The board of directors review any profits to determine when those margins can be returned to members.

Check our website, cmec.coop, for a list of unclaimed capital credits.



Weathering the Storm

Our 2021 Annual Report was mailed to members on or about June 4, 2021. You can also view it on our website: cmec.coop.

Find Your Name and Win \$50

Find your name hidden inside this issue of The Grid and receive a **\$50 bill credit**. Credit must be claimed by the end of each month in which this newsletter is published.

Charlie Keller Retires



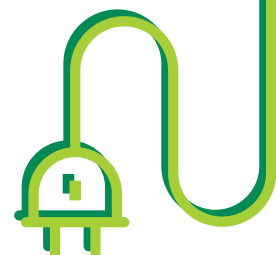
Charlie Keller recently retired from CMEC. He came to our cooperative in 1982 when he was hired as summer help. Charlie returned 20 years later in 2002 to work in the warehouse and then trained to be a lineman.

Thank you for serving our members and our cooperative.

Energy Efficiency Tip of the Month

During summer months, run large appliances that emit heat (like clothes dryers and dishwashers) during the evening when it's cooler.

This will minimize indoor heat during the day when outdoor temperatures are highest.



WHAT IS RENEWABLE ENERGY?

The Answer is Blowing in the Wind

We hear a lot about renewable energy, but what is it, exactly?

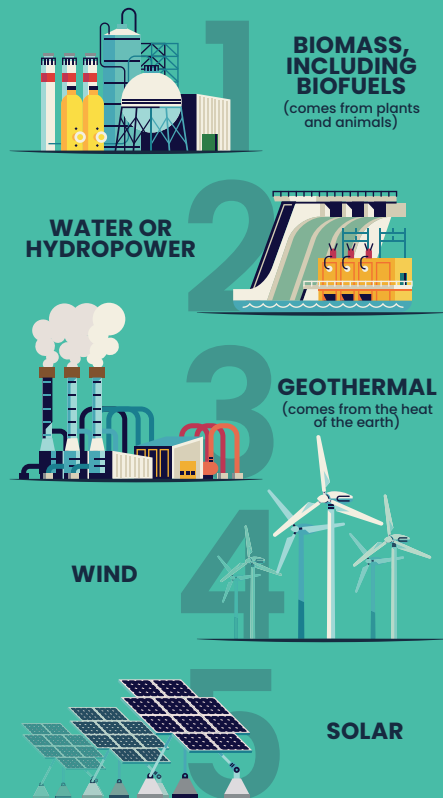
It is an energy source that is perpetual ... inexhaustible... "to infinity and beyond!" Renewable energy has storage limitations, however, and some types are not available 24/7.

A FEW FACTS

- According to the University of Michigan (U-M) Center for Sustainable Systems, about 80% of the nation's energy comes from fossil fuels, 8.4% from nuclear and 11.4% from renewable sources.
- In 2019, renewable energy sources accounted for about 17% of energy generation, according to the U.S. Energy Information Administration (EIA).
- The EIA projects that the share of renewables used for U.S. electricity generation will increase from 21% in 2020 to 42% in 2050.
- Wind and solar are the fastest-growing renewable sources, but they provide just 3.8% of total energy used in the U.S., according to the U-M center.

Safe Electricity.org®

THE MAJOR TYPES OF RENEWABLE ENERGY SOURCES ARE:





LOCAL Places & LOCAL Faces

Grand Prairie Friends

217-621-6299

grandprairiefriends.org



Grand Prairie Friends is a not-for-profit land trust dedicated to preserving and restoring natural areas in Ford, Iroquois, Champaign, Vermilion, Coles and Shelby Counties. At more than 1,100 acres of rolling forest along 14 river-miles of the Embarras River, their Warbler Ridge Conservation Area in Charleston offers a peaceful retreat. Hike the 10 miles of trails, visit the historic cemetery, volunteer as a bat monitor (the flying kind) or celebrate at the Fall Fete on Sept. 25, 2021. Visit grandprairiefriends.org for events, maps and directions.



Home Again Consignment Shop

830 18th Street, Charleston • 217-345-4700

myhomeagain.net

Home Again is a local and family-owned business featuring quality used furniture and home décor at affordable prices. They have been in business for nine years with 16 individual vendors that feature antiques and collectibles, handcrafted and refurbished furniture, handmade signs, original watercolor paintings, metalworking, and other unique items. Their inventory includes brand new furniture pieces to add variety to the ever-changing merchandise. Shop on their Facebook page or stop by Monday-Wednesday and Saturday 10 a.m.-3 p.m., or Thursday and Friday 10 a.m.-5 p.m.

The Whiteside Garden

8422 N County Rd 1820 E, Charleston • 217-235-4644

dhnature.org/whitesidegarden



The Whiteside Garden in Charleston is just one of the Douglas-Hart Foundation's three properties, along with Friendship Garden and the Douglas-Hart Nature Center in Mattoon. The Whiteside Garden was the former home of Eastern Illinois University professor, Dr. Wesley Whiteside. Whiteside passed away in 2015 leaving the garden to EIU, but in 2018 the Douglas-Hart Foundation took over ownership of the garden. The garden features thousands of native, unique, endangered and rare plants from all over the world on 5 acres of property. The garden has meandering trails that cross a beautiful tranquil creek, as well as other water and art features. The garden also has a Welcome Center with a gift shop, exhibit area, library, meeting space and restroom. The Whiteside Garden is open Friday and Saturday 9 a.m.-3 p.m. with tours offered the first Saturday of each month. Admission is free but donations are appreciated.

We are helping support and kick-start small business comeback in our communities.
Email info@cmec.coop if you have a business, product or service you provide.

Monthly Board Meeting Minutes can be viewed on our website: cmec.coop