

# THE GRID

P.O. Box 709  
(104 Dewitt Ave., East)  
Mattoon, Illinois 61938

Phone: 217/235-0341  
or Toll-Free:  
1-888-661-CMEC (2632)  
Office hours:  
Monday-Friday  
7:30a.m. - 4:30p.m.

**Chairman**

Kent Metzger.....Gays

**Vice Chairman**

Bill Voyles .....Sullivan

**Secretary**

Andrew Fearn ....Charleston

**Treasurer**

Thomas Sherman ...Humboldt

**Directors**

Jeffery Hudson .....Charleston

Mike Love..... Mattoon

Colt Roderick ..... Trilla

**President/CEO**

Amy Borntreger

To Report an Outage  
call #888-661-2632

Send your current email  
to [info@cmec.coop](mailto:info@cmec.coop)  
for a chance to win a  
\$50 bill credit



Your Touchstone Energy® Cooperative 

## 2021 CMEC Election

Watch for your CMEC ballot in the mail. Voting is open May 20 through June 14, and members will have the option to mail in their ballots or vote online using Survey & Ballot Systems. Active accounts with a valid email on file will get a reminder notification. Proposed amendments to our bylaws include changes to Article V, Section 2(c) and (d) regarding the appointment of an election committee, and Article VI, Section 6 regarding board director meeting participation remotely. The current bylaws can be found on our website: [cmec.coop](http://cmec.coop). There are no contested elections for 2021. Our cooperative is democratically controlled by you, our members, as one of our seven guiding principles.



## Small Business Comeback

Have you checked out Local Places & Local Faces on page 20D? As part of our concern for community, we know that keeping money closer to home supports our shops, restaurants and schools. CMEC is locally owned, not-for-profit and cares about our members and neighbors. If you are a small or home-based business and would like to be included in an upcoming edition of The Grid, send an email to [info@cmec.coop](mailto:info@cmec.coop).

## Annual Meeting

# Postponed

Our board of directors made the decision to postpone our 2021 Annual Meeting, scheduled for June 17, to a later date. We continue to evaluate guidelines to protect the health of our members and employees. Please continue to monitor our website and social media for the latest updates regarding the event.



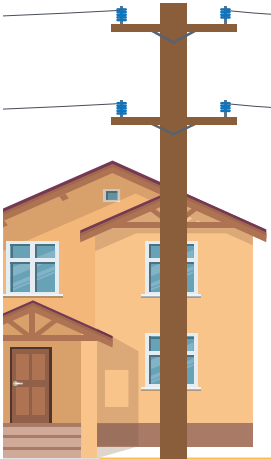


## Think Before You Climb



Before you rush into a job that requires you to use a ladder, take precautions before you climb.

### Electrical Safety



1. **Look up** and around for power line locations before using a ladder.
2. Keep a minimum **10-foot distance** from a power line or other electrical equipment at all times.
3. The minimum distance rule includes you (any part of your body) or **any object you are holding**, such as a ladder or tool.
4. Always **be aware of power line locations** when you are elevated.
5. Sources of elevation include, but are not limited to, a **ladder, rooftop, boom lift or scaffolding**.

### General Ladder Safety

1. Use a ladder on a **stable, level surface**.
2. Maintain **three-point contact** on the ladder when climbing.
3. Three points of contact mean **two hands and a foot** or **two feet and a hand**.
4. Keep your body **near the middle of the step** and face the ladder when climbing.
5. **Do not use the top step/rung** of a ladder unless designed for that purpose.
6. For a stepladder, make sure the base is **fully open** and the spreaders are **locked**.



Learn more about electrical safety:



Sources:  
OSHA,  
American Ladder Institute

## Avoid Ladder Missteps

According to the American Ladder Institute, the five most common mistakes people make when using ladders are:

- Overreaching
- Missing the last step when coming down
- Not keeping three points of contact
- Using the wrong type or size of ladder for the job
- Placing it on uneven ground

Learn more at [SafeElectricity.org](http://SafeElectricity.org).



### Follow Us

What are you missing on Facebook?

- # Power outage information & restoration
- # Electrical safety reminders & tips
- # Learn more about the people behind your power
- # Updates on weather, storms & things that impact the power grid
- # Energy saving tips & Ways to Save \$
- # What's new at your co-op & much more

Do you already follow CMEC, but do not see our news feed or posts?

Select "default" under the following settings to ensure we appear in your news feed and be sure to "like" or comment on our posts occasionally so Facebook will continue to show you our updates.



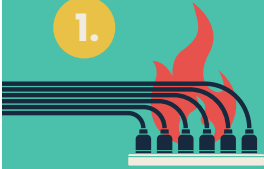
### Find Your Name and Win \$50

Find your name hidden inside this issue of The Grid and receive a **\$50 bill credit**. Credit must be claimed by the end of each month in which this newsletter is published.

# ELECTRICITY 101

To stay safe around electricity, start with these **SEVEN** basic tips:

1.



## DON'T OVERLOAD OUTLETS OR CIRCUITS

Plugging in too many items or drawing too much power on a circuit can cause overheating, fire, and damage to devices.

2.



## DON'T USE FAULTY ELECTRICAL CORDS OR PLUGS

Do not use cords that look frayed, worn or cracked. Do not use broken plugs. Never remove the grounding pin from a three-pronged plug.

3.



## HAVE YOUR ELECTRICIAN'S NUMBER IN YOUR PHONE

Most electrical repairs or installations are not DIY projects. Hire an expert to avoid serious injury or wiring problems.

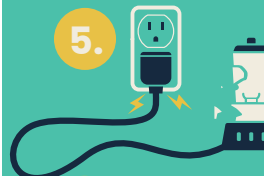
4.



## BE CAREFUL AROUND H<sub>2</sub>O

Never use electricity while standing in damp or wet conditions. Keep all electrical devices away from water, including cell phones that are charging.

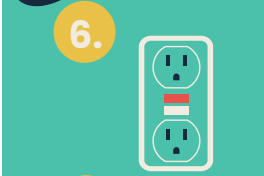
5.



## EVALUATE YOUR APPLIANCES

Do not use appliances in disrepair. Older or broken appliances can overheat, start a fire, and cause serious injuries.

6.



## TEST YOUR GFCIs

Outlets near a water source should be equipped with GFCIs, which help prevent shock and electrocution caused by ground faults. Test monthly to make sure they are working.

7.



## MAKE SURE YOUR HOME IS UP TO CODE

Your home should be properly wired and electrically sound. Contact a reputable electrician to evaluate your home.

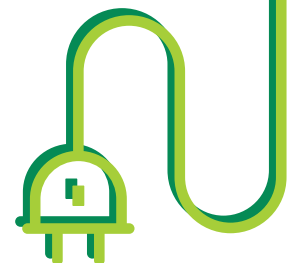
Safe  
Electricity.org®

## Energy Efficiency Tip of the Month

Avoid placing items like lamps and televisions near your thermostat.

The thermostat senses heat from these appliances, which can cause your air conditioner to run longer than necessary.

Source:  
[www.energy.gov](http://www.energy.gov)





# LOCAL & LOCAL Places & Faces



### All For Them - Latonya's Pet Care Services LLC

217-259-0584  
allforthem.net

Latonya's passion for pets turned into a business in 2020 and her mission is to provide comfortable, individualized care while pet owners are away. She is enhancing the lives of both pets and their parents by offering a high-quality affordable service. Her service includes updates, pictures and journal entries all in the comfort of your home. She will even water plants, administer medications and take them on walks. Give Latonya a call when planning your next trip.

### Meadowview Golf Course

6489 Meadowview Lane, Mattoon • 217-258-7888  
meadowviewgolf.com

Meadowview is a family owned 18-hole public golf course welcoming all skill levels. They provide a friendly atmosphere with a full-service pro shop and snack bar to ensure a great golfing experience. *Krista Newby* They have sister courses in Sullivan (Timberlake), Taylorville (Lakeshore), and Springfield (The Oaks) which add up to more than 450 acres of beauty and natural habitat for wildlife. Try one or add all four to your golfer's bucket list.



### The Fillin' Station

164 Court House Square, Toledo • 217-849-2626  
thefillinstationtoledo.com

Nothing beats a home cooked meal... unless you top it off with homemade pie! The Fillin' Station opened in 2001 and has been serving happy customers for 20 years. They are downtown on the square and open Monday, Tuesday and Thursday 10:30 a.m. to 2 p.m., Wednesday and Friday 10:30 a.m. to 7 p.m., and weekends 7 a.m. to 2 p.m. Be sure to stop by for coffee and dessert or plan a detour for some delicious food on your next outing.

**We are helping support and kick-start small business comeback in our communities.  
Email [info@cmec.coop](mailto:info@cmec.coop) if you have a business, product or service you provide.**

**Monthly Board Meeting Minutes can be viewed on our website: [cmec.coop](http://cmec.coop)**