


MONROE ELECTRIC NEWS

Waterloo, Illinois • 618.939.7171 • 800.757.7433

Your Touchstone Energy® Cooperative 



Alan W. Wattles

Across The President's Desk

Another longtime employee has passed away recently. Steve Candler, who was a truck driver/groundman for 38 years, passed away on Feb. 25.

Steve was a Vietnam Veteran having served in the U.S. Navy for three years on the U.S.S. Hornet, CVS aircraft carrier. His carrier was involved with the pickup of the Apollo 11 astronauts, who were the first to walk on the moon in 1969.



He was married to his wife Anne for the past 50 years. They have three daughters; Angela, Jennifer and Sarah. They were also blessed with seven grandchildren. Steve leaves behind two sisters, Bonnie Johnson and Phyllis Hoefft.

Along with working at the cooperative, Steve raised Angus/Simmental cattle. He enjoyed riding horses around his farm and spending time with his family.

Steve Candler, longtime cooperative employee, passes away

At his retirement party back in 2010, Steve said, "There was never a day gone by that I regretted coming into work. I've truly been blessed."

At the cooperative, Steve always had a smile for you along with laughter and some good humor. You could not help but feel uplifted whenever you were around him.

We offer our deepest condolences to Anne and the rest of Steve's family. We will miss him.

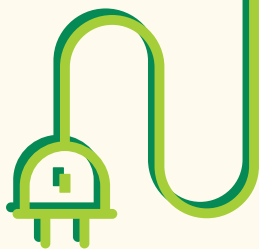


Energy Efficiency Tip of the Month

Some manufacturers set water heater thermostats at 140 degrees, but most households usually only require them to be set at 120 degrees.

Consider lowering your water heater's temperature to save energy and slow mineral buildup in the heater and pipes.

Source:
www.energy.gov



5 STEPS FOR SAFE DIGGING

Working on an outdoor project? Careless digging poses a threat to people, pipelines and underground facilities. Always call 8-1-1 first. Here are five easy steps for safe digging:



1. NOTIFY

Call 8-1-1 or make a request online two to three days before your work begins. The operator will notify the utilities affected by your project.

2. WAIT

Wait two to three days for affected utilities to respond to your request. They will send a locator to mark any underground utility lines.

2-3

3. CONFIRM

Confirm that all affected utilities have responded to your request by comparing the marks to the list of utilities the 8-1-1 call center notified.



4. RESPECT

Respect the markers provided by the affected utilities. The markers are your guide for the duration of your project.



5. DIG CAREFULLY

If you can't avoid digging near the markers (within 18-24 inches on all sides, depending on state laws), consider moving your project location.



Source: call811.com

Are you an all-electric account?

Make sure you're on the right rate

If your home is "all-electric," meaning that at a minimum, your main heating source is electric, make sure the rate on your bill is listed as "16," our all electric heating rate. Rate 16 discounts the kilowatts used during the months of September through May for accounts that fall under these conditions.

Check your electric bill on the second page at the top next to "Rate schedule/bill type" for the rate your account is on. If you think you're on the wrong rate, please call us at 939-7171, ext. 115.

Between the months of September-May, rate 16 breaks down into three rate blocks: 0-800, 801-4000 and 4001 kilowatt hours. The rate drops in the 2nd block to 8.65 cents per kilowatt hour.



Meet the Directors

Richard Neff

What is the most important duty of a director?

The most important duty of a director is to hire the CEO and set the compensation for the CEO.

What has surprised you most about serving as a director?

What has surprised me most is the number of educational classes and conferences available that keeps directors informed and updated in the cooperative world.

What is your projection of the future for the cooperative?

I believe the cooperative is well positioned for the future with very strong management and dedicated employees. We will have to be prepared for a continued change from fossil fuel electric generation to renewable energy.

What person has had the greatest impact on your life and why?

The person who influenced my life the most is my wife Karen. We worked side by side raising our family and are extremely proud of our children. We have managed and operated our farm as a team and we both love each day spent doing that.

How do you like to spend your free time?

I like to spend free time with family, playing games, cards, visiting with friends and attending sporting events.



MCEC line outages - February 2021

Date	Duration	# Out	Map Location	Cause Desc	Substation
2/3/2021	0:28	183	Country Club Rd	Maintenance	North Waterloo
2/8/2021	2:48	255	Millstadt South	Vehicles Or Machinery	Millstadt
2/8/2021	0:24	102	Millstadt South	Electrical Overload	Millstadt



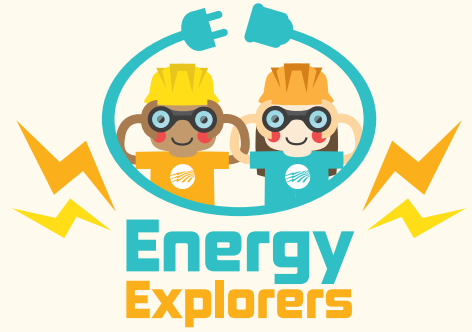
www.mcec.org

6132 State Rt. 3 • P.O. Box 128 • Waterloo, Illinois 62298
618-939-7171 • 800-757-7433

Office hours: Monday through Friday 7:00 a.m. to 4:00 p.m.

THANK A LINEWORKER!

This month, we're recognizing lineworkers for the amazing job they do to make sure we have electricity! Think about all the ways you use electricity every day. Do you use a phone, watch TV, play video games or turn on lights? You're able to do *all* of these things because of lineworkers.



Below is space to write a short thank you note to your local lineworkers. Write your note, then ask an adult to help you send it back to us so we can share it with our crews.



WE ♥ OUR
LINEWORKERS

Send your note to the mailing address below, or snap a photo with your phone and email it to us!

Monroe County Electric Cooperative, Inc.

6132 State Rt. 3 • P.O. Box 128 • Waterloo, Illinois 62298

www.mcec.org