

# THE GRID

**P.O. Box 709  
(104 Dewitt Ave., East)  
Mattoon, Illinois 61938**

**Phone:** 217/235-0341  
or **Toll-Free:**  
1-888-661-CMEC (2632)  
**Office hours:**  
Monday-Friday  
7:30a.m. - 4:30p.m.

**Chairman**

Kent Metzger.....Gays

**Vice Chairman**

Bill Voyles .....Sullivan

**Secretary**

Andrew Fearn ....Charleston

**Treasurer**

Thomas Sherman ...Humboldt

**Directors**

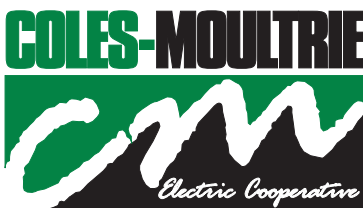
Jeffery Hudson .....Charleston  
Mike Love..... Mattoon  
Colt Roderick ..... Trilla

**President/CEO**

Amy Borntreger

**To Report an Outage  
call #888-661-2632**

**Send your current email  
to [info@cmec.coop](mailto:info@cmec.coop)  
for a chance to win a  
\$25 bill credit**



Your Touchstone Energy® Cooperative 

## Taste the Difference

Where's the beef ... pork and chicken? Look no farther than down the road in our very own cooperative territory. We are featuring Springville Family Farms this month as we continue to support small business in our communities. This local family-owned business started by David and Heather Barger in 2018 is located at 417 N CR 1050 E, Lerna which was once upon a time called Springville. They are open Saturdays 9 a.m. - 12:30 p.m. or by appointment. They

started by selling to friends and neighbors and realized some folks do not have a lot of freezer space and may want to buy their quality meat a few pounds or packages at a time. **Patricia Cherry** They raise not only cows on their spring fed farm, but also pigs and chickens. What a great way to know where your food comes from, shop local and support our communities. Check out more Local Places & Local Faces on page 20D.

*The Barger Family pictured left to right: James, Janice, Heather, Elijah and David*



# IEC Scholarships

Twelve scholarships of \$2,000 each will be awarded in 2021 through the Thomas H. Moore Illinois Electric Cooperatives (IEC) Memorial Scholarship Program.



6 scholarships are awarded to high school seniors who are the sons or daughters of an Illinois electric cooperative member receiving service from the co-op (deadline to apply Dec. 31, 2020).



1 scholarship, the Earl W. Struck Memorial Scholarship, is awarded to a high school senior who is the son or daughter of an Illinois electric cooperative employee or director (deadline to apply Dec. 31, 2020).



4 scholarships are reserved for high school seniors enrolling full-time at a two-year Illinois community college who are the sons or daughters of Illinois electric cooperative members, employees or directors (deadline to apply Dec. 31, 2020).

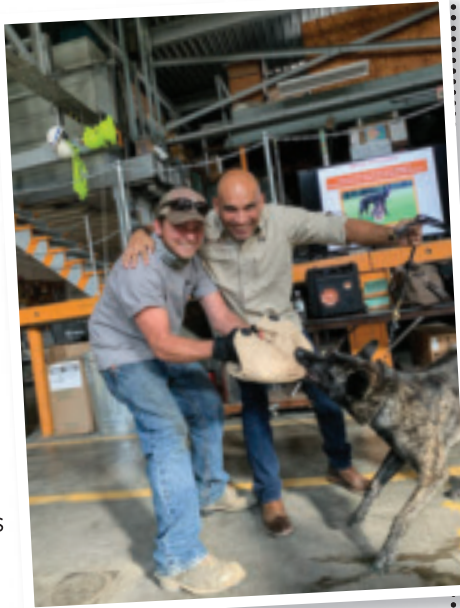


1 scholarship, the LaVern and Nola McEntire Lineworker's Scholarship, is awarded to a student to attend the lineworker's school conducted by the Association of Illinois Electric Cooperatives in conjunction with Lincoln Land Community College, Springfield, IL (deadline to apply April 30, 2021).

**For more information regarding the scholarships, contact Carla Bradbury at 217-235-0341 or [cbradbury@cmeccoop.com](mailto:cbradbury@cmeccoop.com). Information has also been shared with area high school guidance counselors and is available for completion online at [aiec.coop](http://aiec.coop).**

## Safety Day 2020

This year's Safety Day for CMEC was held Oct. 8 and included the Mattoon Fire Department, Illinois State Police and speaker Hector Hernandez. This is a day our employees come together to review safety procedures, listen to various speakers and simulate a mayday call. "Safety is our number one priority," says Amy Borntrager, President/CEO.



## Energy Efficiency Tip of the Month

Energy bills can increase during winter for a variety of reasons, like houseguests, more time spent at home, and shorter days and longer nights. Small actions, like turning down your thermostat, replacing old bulbs with LEDs and washing clothes in cold water can help you save.

## 2019 Allocated Amounts

Electric cooperatives operate at cost. This allows any excess revenue, called margins, to be returned to members in the form of capital credits. The member bills mailed in October 2020 included your 2019 allocated amount. This is reviewed by our board of directors each year to determine the margins and if it is feasible to return those credits to members. To date, our cooperative has paid capital credits through 1982.



# Think "Smart" This Holiday Season

This holiday season think "smart" and consider giving a loved one (or yourself) a gift that keeps giving. Many smart devices reduce home energy use, which can put a little more jingle in your pocket. Consider energy-saving smart gadgets while shopping this holiday season.



- Smart thermostats
- Smart lighting
- Virtual assistants
- Thermal leak detectors
- Smart power strips and surge protectors

For more information about energy efficiency and safety around electricity, visit [SafeElectricity.org](http://SafeElectricity.org).

## Find Your Name and Win \$25

Find your name hidden inside this issue of **The Grid** and receive a **\$25 bill credit**. Credit must be claimed by the end of each month in which this newsletter is published.



# HOLIDAY



## GIFT GUIDE



Give the gift of safety!



### Portable Ground Fault Circuit Interrupter (GFCI)

Designed for locations where there is not a permanent GFCI installed, these devices detect an abnormal flow of electricity and shut off the power, preventing shock or electrocution.

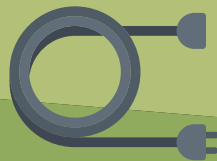
### Outdoor Remote Control Outlet Switch

Leaving outdoor lighting on overnight can be costly and pose a potential hazard. An alternative to smart lights, this remote control switch allows you to turn outdoor lights or other gadgets on or off remotely.



### Tamper Resistant Outlets (TROs)

Great for families with small children, TROs are wall receptacles that have shutters that stay closed unless a plug with two prongs is inserted into the outlet. Because they help keep children safe, the National Electrical Code requires TROs in new homes and apartments.



### Heavy Duty Extension Cord

Power devices safely. Too often the tools or equipment necessary for larger projects are powered by extension cords that are inadequate for the environment or heavier electrical load.

Learn more at





# Local Places & Local Faces



## Hager Tree Farm

9791 N CR 2250 E, Ashmore

Nothing gets you in the holiday spirit like a Hager Christmas Tree. They have been spreading cheer since 2004 as a favorite destination for many families who choose and cut Scotch and White Pines or select a precut Fraser Fir. They opened Nov. 21 for the season and were voted one of the top 10 tree farms in Illinois.

## Mattoon Public Library

1600 Charleston Ave, Mattoon

The Mattoon Public Library has a hidden gem open to everyone highlighting local history. Chris Suerdieck, a local history curator, has transformed a space in the basement into a wonderful trip back in time. This is a must see for everyone in our area. There is even a story board on Coles-Moultrie Electric Cooperative.



## Revival City (RC) Donuts

900 Lincoln Ave, Charleston

Marschelle McCoy started this little doughnut shop during COVID-19 and usually sells out daily. She attributes her dream of opening a bakery to many people who have helped her along the way. She always has the standard maple and glazed doughnuts but comes up with seasonal creations or accidents like the "Sugar Mama." It is clear she loves what she is doing by bringing the real McCoy (no frozen dough is used) to our area.

**We are helping support and kick-start small business comeback in our communities.  
Email [info@cmec.coop](mailto:info@cmec.coop) if you have a business, product or service you provide.**

**Monthly Board Meeting Minutes can be viewed on our website: [cmec.coop](http://cmec.coop)**