

WORK ZONE AWARENESS

Worker & Driver Protection Top Priority!



Safety First

MY CO-OP

At Rock Energy Cooperative, safety is always a major point of emphasis when it comes to working in the field, especially when traffic is involved.

The purpose of a work zone should always be to provide a safe area for workers to work and a safe route for drivers to navigate around the work activity (construction, maintenance, utility, etc.).

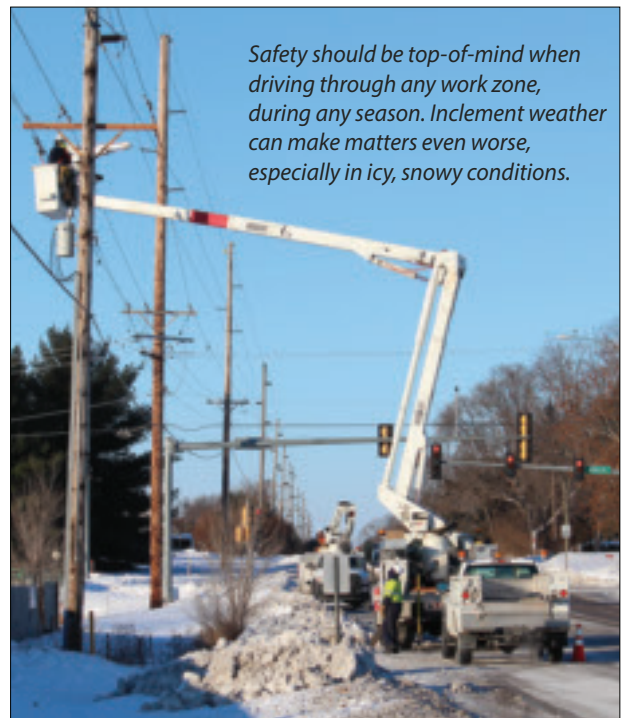
Whereas work zones serve a very important role in keeping workers and drivers safe, they can also be a source of big-time traffic congestion and major headaches. This is especially true with winter approaching, as ice, snow, and freezing rain can make driving conditions even more dangerous, potentially even treacherous.

WORK ZONE DRIVING

(AVERAGE PER YEAR OVER 5 YEAR PERIOD IN ILLINOIS)

- **CRASHES: 5,114**
- **INJURIES: 1,390**
- **FATALITIES: 34**

Source: Illinois DOT



Safety should be top-of-mind when driving through any work zone, during any season. Inclement weather can make matters even worse, especially in icy, snowy conditions.

Continued on page 20B



SAFETY TIPS FOR TRAVELING THROUGH WORK ZONES

PLAN AHEAD

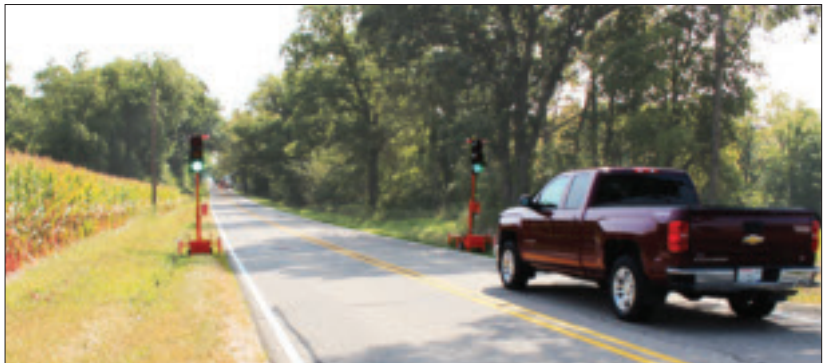
Before getting into your vehicle, always be prepared by looking into potential traffic issues on the route you are going to take. Look over phone apps, transportation websites, and TV and radio reports for the latest traffic information. By gathering information before heading out, you can potentially locate active work zones and thus plan your trip better by changing your route, time of travel, etc.

EYES ON THE ROAD

Keep your head clear and your eyes on the road, not on your cell phone or any other device. Also, things can change from day-to-day, or even hour-to-hour, so make sure to pay attention and don't assume traffic patterns are the same as they were the day before, or earlier in the day.

BE AWARE OF YOUR SURROUNDINGS

Tailgating is never a good idea, especially in a work zone, so keep your proper distance from the vehicle in front of you. Speeding and tailgating can lead to crashes with other vehicles and with field workers. Don't ignore posted speed limits, and pay attention to road crews, work zone signs, cones, barrels, and warnings that are in place to help traffic navigate through work zones. Be aware of all activity occurring around you, including other vehicles in front, beside, and behind you.



Pictured above is a Rock Energy work zone along Highway 67 in Clinton, WI. New portable stop lights at the work zone sense incoming vehicles from both directions and automatically change accordingly, allowing for vehicles to pass through the one-lane work zone safely.



Pictured above, Rock Energy Operations Manager Tony Haffelder monitors a work zone on Highway 67 in Clinton, WI.

WORK ZONE STOP LIGHTS

Always thinking of “safety first,” Rock Energy recently purchased two new sets of portable stop lights to use at work sites, if needed. The new stop lights automatically sense when vehicles are approaching and will change (red to green or green to red) based on traffic flow from the opposite direction. The purchase of the new stop lights is just one example of how Rock Energy continues to work at improving its safety measures.

In the end, it's important that both workers and drivers do their part and take responsibility for work zone safety. Always remember to stay alert, slow down, and use caution when you're in a work zone. If you do that, you'll get through the work zone and to your final destination safely and without incident.

Energy Assistance Available for Low-Income Households

For many Illinois households, energy costs place a severe and continuing stress on the family's budget. In some cases, families will be forced to make painful decisions about what bills to pay and what necessities to cut.

The federally funded Low Income Home Energy Assistance Program (LIHEAP) helps eligible low-income households pay for winter energy services. Fortunately, Rock Energy Cooperative works with LIHEAP, which benefits about 300,000 Illinois households each year.

LIHEAP Details

LIHEAP heat and electric assistance is a one-time benefit payment per heating season that is intended to help pay a portion of a household's heat and electric costs. The benefit amount depends on household size, income, and energy costs.

In most cases, the benefit is applied as a credit directly to the household's Rock Energy account. You do not need to duplicate your efforts by applying for assistance with both your local agency and Rock Energy. We will send you a letter about one month after receiving your application that will include details on your assistance status and dollar amounts.

You are eligible for heating assistance if your household's combined income is at or below the levels shown on this chart:

Illinois LIHEAP Income Guidelines for the 2020-2021 Heating Season

HOUSEHOLD SIZE	ONE MONTH INCOME	ANNUAL INCOME
1	\$2,127	\$25,250
2	\$2,873	\$34,480
3	\$3,620	\$43,440
4	\$4,367	\$52,400
5	\$5,113	\$61,360
6	\$5,860	\$70,320
7	\$6,670	\$79,280
8	\$7,353	\$88,240

Where to Apply

To apply for assistance, you'll need to complete a Home Energy Plus application and provide information on each household member and their income as well as records of your heating costs.

For more information and application details, please call your local office:

- Winnebago County (South Beloit, Rockton, and Roscoe residents only): 815-389-0914 or 815-624-7788, Rockton Township, 1315 N. Blackhawk Blvd., Rockton.
- Boone County: 815-544-3144, United Way of Boone County, 220 W. Locust St., Belvidere.
- Stephenson County: 815-232-3141 or 800-883-1111, Northwestern Illinois Community Action Agency, 27 S. State Ave., Freeport.
- McHenry County: 815-338-7752, McHenry County Housing Authority, 1108 N. Seminary Ave., Woodstock.

Weatherization Services

When you apply for energy assistance, the local agency also will see if you qualify for the Weatherization Assistance Program, which helps fund energy-efficiency, home improvement projects. If you are eligible for weatherization services, an energy auditor will look at your home to see what can be done to make it more energy efficient. Weatherization services differ with each home, depending on how it was built and its condition.

For general information about LIHEAP, call 877-411-9276, or visit www.illinoisliheap.com.



Scholarships Offered to High School Seniors

Rock Energy Cooperative again is offering scholarships of \$1,000 to graduating high school seniors who enroll at an accredited school. Students whose parents or guardians are active members of REC are eligible.

Our independent scholarship committee will judge applicants based on general merit, cooperation, leadership abilities, financial need, and class ranking.

Since 1989, Rock Energy has awarded more than \$107,000 in financial aid to deserving students. Online applications are available at www.rock.coop. Just go to the Community & Youth tab and click on Scholarships. The deadline for submitting applications is Jan. 10.

If you have any questions, please contact Jonas Berberich at 866-752-4550, or jonasb@rock.coop.

In addition, scholarships of \$2,000 will be awarded through the Thomas H. Moore Illinois Electric Cooperatives (IEC) Memorial Scholarship Program. These scholarships are available to high school seniors who are the sons or daughters of an Illinois electric cooperative member receiving service from the co-op.

Applications must be completed on-line at www.rock.coop. Just go to the Community & Youth tab and click on Scholarships. The deadline is Dec. 31.

Directors Re-Elected at 84th Annual Meeting

Rock Energy Cooperative held its 84th Annual Meeting on Monday, Oct. 5, at the Eclipse Center in Beloit, WI. During the meeting, three directors were re-elected in their districts:

- Clark Schoonover - District 6
- William Dietsch - District 7
- Ronald Richards - District 8



Clark Schoonover
Re-Elected
District 6 Director



William Dietsch
Re-Elected
District 7 Director



Ronald Richards
Re-Elected
District 8 Director

Shane Larson, CEO

P.O. Box 1758, 2815 Kennedy Rd., Janesville, WI 53547
P.O. Box 126, 15229 Willowbrook Rd., South Beloit, IL 61080
608-752-4550 • 866-752-4550

Jonas Berberich, Editor

2021 Director Elections

At each annual meeting, members have the opportunity to vote for director positions in three of the nine cooperative districts. Each term is three-years. Listed below are the three board districts and associated townships that will be up for election in 2021. Due to the ongoing pandemic, scheduling of the 2021 annual meeting has yet to be determined.

Any members interested in running should watch for additional information in future cooperative publications and on our website.

2021 ELECTION DISTRICTS:

- **DISTRICT 1**
Dunkirk, Albion, Porter, and Fulton in Wisconsin
- **DISTRICT 3**
Johnstown, Bradford, and Darien in Wisconsin
- **DISTRICT 5**
Wisconsin: Turtle, Clinton, and Sharon
Illinois: Roscoe, Manchester, Leroy, Chemung, Alden, and Hebron

Active members who are interested in running for a position on the REC Board of Directors must permanently reside in one of the areas up for election and meet all other qualifications.

Happy Thanksgiving

Rock Energy Cooperative offices will be closed on Thursday, Nov. 26, and Friday, Nov. 27, in observance of Thanksgiving. We will reopen at 7:30 a.m. Monday, Nov. 30 (for calls only).

Members can make payments in the drop boxes at both offices throughout the holiday weekend and at the new payment kiosk outside our South Beloit office, 15229 Willowbrook Rd.

Even though our offices are closed, standby crews are available. If you need to report a power outage, please call 866-752-4550.



**ROCK ENERGY
COOPERATIVE**
Empowering Members Since 1936