

Clay ELECTRIC News

A Touchstone Energy® Cooperative

7784 Old Hwy. 50 ■ P.O. Box 517 ■ Flora, Illinois 62839 ■ www.ceci.coop ■ 618/662-2171 ■ 800/582-9012

From the Manager

Summer is here and we are moving on to our summer projects. This year will see us begin a two-year project to replace all the meters on our system. Our system has a wide range of meters currently installed, from the old mechanical types to a variety of digital models. We are moving to a Landis+Gyr Advanced Metering Infrastructure (AMI) system. For our members who also have Clay County Water, you will see improved service as well. The Clay County Water board of directors has decided to use Landis+Gyr for their own metering upgrade. Combining the systems will give our electric members and the customers of Clay County Water more and better information on their usage.

The AMI system is more than just a few pallets of new meters. You will be seeing some new devices attached to our poles in the future. These routers will allow your meter to communicate with us directly. Why does this matter? It matters in our response times to outages, in recording blinks and high usage, and for detecting leaks early for our Clay County Water users. Nothing is more frustrating for our linemen than to respond to an outage, restore power, and find out after returning to the shop that there is still one member out of power at the end of the line. The AMI system will show members still out



of power after a fix has been performed. This means quicker restoration of power and more efficient use of time and money in responding to outages.

Our mission is to provide safe, reliable, and exceptional service to our member owners. Partnering with Clay County Water allows us to split costs, save money, and provide more services to our members and customers. I am excited to be part of bringing technological advantages to our membership. Improving our data collection and infrastructure will allow us access to many services that could not have been utilized before. In a changing power market, the ability to adapt

will be crucial to continuing to provide the best services to our members. **13358-001**

As you flip through your newsletter, keep your eyes peeled for your member number. There are three member numbers hidden in Clay Electric News. If you find your number and give us a call you win \$5 off your next bill!

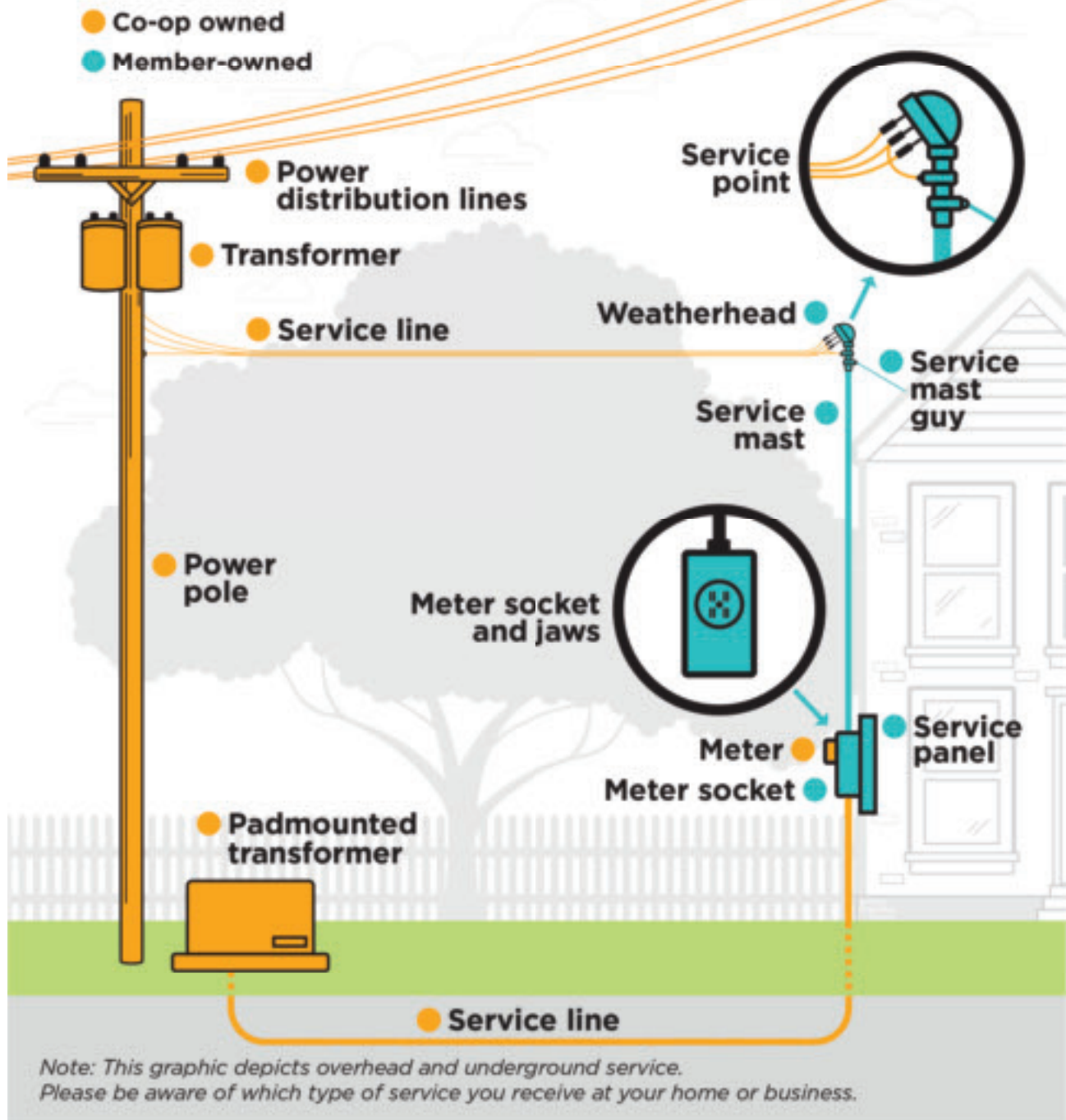


Luke Johnson
CEO

Who Owns What?

Electric Co-op Owned Equipment vs Member-Owned Equipment

This graphic depicts equipment owned by the co-op (in gold) and the member (in blue). If a storm damages any equipment owned by the co-op, we are responsible for repairs. If a storm damages any member-owned equipment, the member is responsible for repairs. Members should hire a licensed electrician when making any repairs to member-owned equipment.





A well-designed landscape can save you some green

Thinking of planting some trees in your yard this summer? If the answer is yes, giving some thought about where to put them could help reduce your energy bill. Not only are trees beautiful, but shading is the most cost-effective way to reduce heat gain from the sun.

The savings are nothing to sneeze at. According to the Department of Energy, a well-planned landscape can reduce an unshaded home's air conditioning costs 15 to 50 percent. Our nation's energy authority also boasts that on average, a well-designed landscape saves enough energy to pay for itself in less than 8 years.

Although effective, shade-producing landscaping strategies vary by climate. Here are general planting guidelines from Arbor Day Foundation.

- Plant on the west and northwest side of your home to provide mid- to late-afternoon shade.

- Plant shade trees over patios, driveways and air-conditioning units (but never crowd or block your A/C unit—it should have a 5-foot clearance above it and 3 feet on all sides).
- Use trees to shade east and west windows. If they block your view, prune lower branches. **6685-001**
- In general, large, deciduous trees planted on the east, west and northwest sides of your home create shade in the summer and can help decrease the cost of running your air conditioner in the heat of the summer.

What is deciduous, you ask?

Deciduous trees shed their leaves annually. Although it equates to a lot of leaves to rake come October, the annual cycle lets the sunshine through

in the winter but blocks the sun's rays in the summer. Either scenario helps reduce energy costs if trees are strategically placed in relation to your home. Trees that don't shed leaves are called evergreens, which usually block the sun year-round. That's great in the summer but not in the winter. Consult a landscape professional for specific climate/region recommendations.

When planting trees, consider height potential. Do not plant a tree that will mature to more than 15 feet tall near or under power lines. Taller-growing trees (taller than 15 feet at maturity) should be planted a minimum of 20 feet away from power lines, and much farther – 50 feet away – to avoid future pruning/power line issues.

For more information about planting the right tree in the right place or about electrical safety, go to SafeElectricity.org.

MEMBER PRIZES

Every month we will have three member numbers hidden throughout Clay Electric News. If you find your member number that corresponds to the one found on the upper right corner of your bill, call our office and identify your number and the page it's on. If correct, you will win a \$5 credit on your next electric bill.

Minutes of the Board of Trustees Meeting

May 26, 2020

The regular meeting of the Board of Trustees of Clay Electric Co-operative, Inc. (CECI) was held at the Clay Electric Co-operative Headquarters, Flora, Illinois beginning at 6:58 o'clock p.m. on Tuesday, May 26, 2020.

Trustees present were: Kevin Logan, Bob Pierson, Bill Croy, Danny Schnepfer, Greg Smith, Neil Gould and Frank Herman. Also present were: Luke Johnson, CEO and Tyra Cycholl, Attorney for the Board. Frank Czyzewski and Richard Rudolphi participated via conference/Zoom call. The meeting was opened by Bob Pierson, who presided and Greg Smith, acted as secretary thereof.

The pledge of allegiance was recited followed by the invocation, given by Luke Johnson.

The following proceedings were had [all action being first duly moved and seconded, and all action taken being upon the unanimous vote of the Board or without dissenting vote of abstention unless otherwise stated]:

APPROVED, the Suggested Agenda.

APPROVED, the Consent Agenda including the following:

- **APPROVED**, the prior meeting minutes.
- **APPROVED**, (a) to admit to membership those 12 applicants connected for service since the last such review by the board, and (b) cancel those 9 former members shown on the Manager's Report since the last such review by the Board, said members no longer taking service;
- **APPROVED**, the Work Orders;
- **APPROVED**, the Disbursements;
- **APPROVED**, the Credit Card Statements;
- **REVIEWED**, the Attorney Retainer;

■ **REVIEWED**, the Account Summary Report;

■ **REVIEWED**, the Federated Report from the Board;

■ **REVIEWED**, the NRECA Board Report.

APPROVED, at 7:02 p.m. entering into Executive Session to discuss IBEW Negotiations.

APPROVED, at 7:22 p.m. exiting Executive Session and returning to Regular Session.

APPROVED, the Tentative Agreement with IBEW.

REVIEWED, the CFC Quarterly Loan Payment.

HEARD, a report by Frank Herman regarding the SIPC Meeting.

REVIEWED and **DISCUSSED**, the Member Loan Analysis.

HEARD, a report by Kevin Logan regarding the AIEC Meeting.

WERE INFORMED, the AIEC Annual Meeting is not being held as a live event but will be a zoom meeting on July 23.

WERE INFORMED, the Region 5 meeting is canceled.

DISCUSSED, the Clay Annual Meeting and if a live event is possible or if it should be a virtual meeting.

HEARD and APPROVED, a financial report by Luke Johnson as to the following:

- April 2020 Form 7;
- April 2020 Balance Sheet;
- April 2020 Cash Flow;
- SIPC Power Delivered in April 2020 dated May 8, 2020;
- April Line Loss;
- Monthly Reconciliation.

REVIEWED, Federal Form 990.

HEARD, a Safety Report for the month of May.

REVIEWED, the Monday morning safety meeting sheet held May 18, 2020.

HEARD and APPROVED, the Manager's report by Luke Johnson on the following topics.

- Operations Report;
- AMI Project Discussion;
- Communications Report;
- Upcoming meetings.

REVIEWED, the Operations Report. **5406-001**

WERE UPDATED, on the AMI project.

REVIEWED, the Communications Report.


WERE REMINDED, of upcoming meetings on, June 22, 2020, July 27, 2020 and Aug. 31, 2020 at 7 p.m. in the Clay Bboard Room.

REVIEWED, a Thank you note from Tom and Martha Buerster.

APPROVED, donating \$300 to the Memorial Scholarship for AIEC.

There being no further business to come before the Board, said meeting was declared adjourned at 8:40 p.m.

**Clay Electric
Co-operative, Inc.**

A Touchstone Energy® Cooperative 

7784 Old Hwy. 50,
P.O. Box 517,
Flora, Illinois 62839
618-662-2171
800-582-9012

Office hours:
7:30 a.m. — 4:00 p.m.
www.ceci.coop
facebook.com/ceci.coop

