

Welcome Alycia and Peggy

In late October, we welcomed two part-time receptionists to our team. They have quickly learned to assist members with payments, services and many other needs.

Alycia Clifton

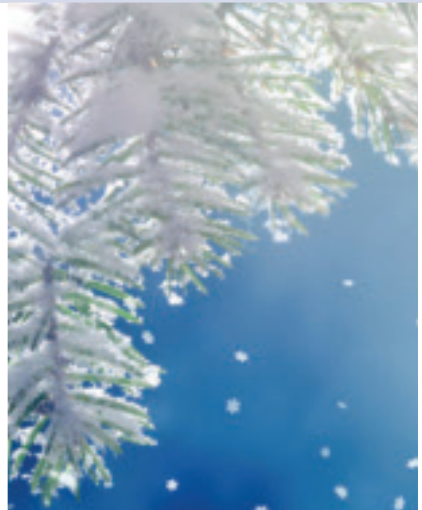
Alycia works for us each morning and continues her job as a teller at Alliance Community Bank in Petersburg each afternoon. She grew up in nearby Oakford and is a PORTA graduate. Alycia is excited for the change!



Peggy Ogden

Peggy works for us each afternoon. She retired from the Secretary of State after 33 years; you may have seen her at the Havana DMV office. She says

she is too young to be retired and was excited to have this opportunity to get back in the working world. Peggy lives in Chandlerville and has a 22-year-old daughter, Emily.



“When the weather outside is frightful...”

Winter weather can include strong winds, heavy snow and ice that can lead to power outages. The easiest way to stay connected to us during a winter outage is through our MyMEC app.



\$2,000 Scholarships

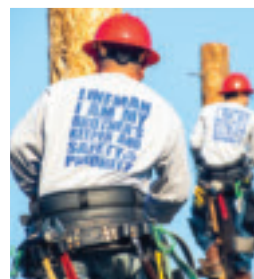


11 College Scholarships

available through the Thomas H. Moore Illinois Electric Cooperatives Memorial Scholarship Program.

Scholarships are available for children of electric cooperative members and employees attending four-year colleges and universities or two-year community colleges.

Deadline: December 31, 2019



1 Line School Scholarship

available through the LaVern and Nola McEntire Lineworker's Scholarship for Lincoln Land Community College.

Available for children of co-op members, co-op employees or directors, those presently enrolled in the lineworker school, and those who have served/are serving in the U.S. Armed Forces or National Guard.

Deadline: April 30, 2020

Visit www.menard.com for more details or call Michelle at the office at 800-872-1203.

5

reasons
winter bills
may rise

1. Heating

Even gas heating systems use electricity to power the blower or circulating pump; as temperatures drop these systems could run continuously. Using humidifiers, space heaters or electric fireplaces to make you more comfortable will add up as well.

2. Engines and animals

Livestock tank heaters and engine block heaters are plugged in as temperatures remain below freezing.

3. Holiday traditions

The holidays wouldn't be the same without your favorite lighting displays and making all your favorite baked treats, but all that fun can add some to your bill.

4. Entertaining

Guests coming for an evening or overnight will mean more hot water for dishes, laundry, showers and more.

5. Family life

Earlier sunsets and cold temperatures can mean families will come home earlier and stay home more often; this can mean lights are on longer, televisions are used more, cooking is done at home and other lifestyle changes.





If only your holiday shopping was this convenient

December is often full of busy days, long to-do lists, and budget blowing expenses. Consider our BudgetWise programs and easy payment options to make at least one thing, paying your electric bill, just a little bit more convenient. Sorry we can't make that shopping list any shorter.

Automatic Payment: We will deduct the total amount from your savings or checking account automatically on the 10th, 17th or 24th of each month. See the back of your payment stub or www.menard.com for the form.



MyMEC App: Download the MyMEC App by searching for Menard Outage in the Google Play or iOS App store. The app allows you to securely pay your bill as well as keeping you connected during an outage.

Website: Visit www.menard.com to link to our secure online bill payment portal to pay with your credit or debit card.

Phone: Call us at 800-872-1203 Mon – Fri 8:00 a.m. – 4:30 p.m. to pay with a credit or debit card.

Drop Off: Stop in, or use our drop box anytime, at our office at 14300 IL St Hwy 97, Petersburg.

Mail In: Allow adequate time for delivery to PO Box 200, Petersburg, IL 62675.

BudgetWise Program

Budget Billing: Pay the same amount every month. Your amount due is fixed at the average of your most recent 12 months. In June, you will settle up with a credit if you used less than the estimated amount of electricity or a balance due if you used more.



Average Billing: Your bill will reflect the average of your most recent 12 months, rounded to the nearest \$5 increment. The amount due may fluctuate month-to-month. There is not a settlement month each year, the amount continually rolls forward.

Board highlights

For full minutes visit www.menard.com or contact the office.

September 24, 2019

- Present were Directors D. Jay Frye, Warren Goetsch, Gary Holloway, Gary Martin, Donald McMillan, Michael Patrick & Dennis Ryan; Engineering Manager Brady Smith, Manager of Accounting & Information Systems Chris Hinton, Manager Alisha Anker & Attorney Charles Smith. Directors Jodine Tate & Steven Worner absent.
- Member addressed board over billing issue; action taken.
- Smith: Reviewed power requirements study & its purpose to provide basis for determining modifications & improvements required for distribution system & to develop 15-year projection of total energy requirements for co-op. After discussion

motion carried to approve study.

- Anker: Discussed Policy: Operating Rules for Cooperative Members, Net Metering and Cooperative Credit for Excess Member-Generated Electric Energy and its inclusion of base rate. Board voted that Manager report back after further review.
- Hinton: Presented Federal IRS Form 990 review, IRS Form 990-T, State DOR Form 990-T; reviewed rule 85-15 for member revenue & parking lot reporting rule applicability.
- Anker: Reviewed operating statement, balance sheet, budget, member services dept. report, operations & reliability report & personnel update.
- Anker: Gave August financial report. Year

to date margins were \$2,264,982 compared to \$1,905,690 last year. End of August equity 41.58%. Served 10,939 member accounts. Net utility plant \$50,580,822 compared to \$49,075,774 last year. Co-op meets requirements of RUS, FFB, NRFC & CoBank.

- Anker: Gave safety report.
- Goetsch: Gave AIEC report.
- Martin: Gave Prairie Power, Inc. report.
- NRECA Region 5 Mtg attendees gave report.
- Board: Entered into executive session; ratified items approved during session & reconvened.
- Next Board Meeting 10/22/19.

LIHEAP

We urge you to contact your local office as soon as possible if you believe you may qualify for the Low-Income Home Energy Assistance Program (LIHEAP). Qualifications are based on income and household size.

Cass County.....	217-243-9404	Sangamon County.....	217-535-3120
Logan, Mason & Menard Counties.....	217-732-2159	Tazewell County.....	309-694-4391
Macon County.....	217-428-2193		



Our office will close at noon December 23 and reopen at 8 a.m. December 26 for the Christmas Holiday.

Our office will be closed January 1 for New Year's Day.

Do you have a backup generator?

Some of our members have backup generators to utilize during extended power outages. It is critical that any backup generation connected to your electric system includes a manual or automatic transfer switch. Without the switch, the backup generation could feed back onto our lines, putting our linemen and others at risk of electrocution. We need to know if you use a generator that connects to your home's electrical system. You or your installing contractor must submit the online Backup Generator Application at www.menard.com/generators. If you do not have internet access, call the office to request a paper copy.

