

President's Report



William R. Dodds
President/CEO

\$7,000 donated to local organizations through Spoon River Electric's Operation Round-Up

The Spoon River Electric Operation Round-Up committee recently donated \$7,000 to six deserving organization throughout the Spoon River territory. The organizations that received funding include Bushnell Area Ministerial Association's Backpack Program, Helping Hands Resale Shop – Canton, Mrs. Nixon's kindergarten class – Knoxville Elementary, Lewistown Backpack Program, Astoria Fire District, and the Historic Ellisville Restoration Organization (HERO).

These donations are made possible by the generous members of Spoon River Electric who

voluntarily make the decision each month to "Round-Up" their electric bill to the next dollar and donate this "extra change" directly to the Operation Round-Up Program. All funds collected are donated back to our communities as charitable grants. The average donation a member makes annually ranges from \$6 - \$12.

For more information about the Operation Round-Up Program, visit our website srecoop.org under the Operation Round-Up tab or call Taryn at 309-647-2700.



Spoon River Electric Cooperative

930 South Fifth Ave, PO Box 340,
Canton, IL 61520
8:00 a.m. – 4:30 p.m.
309-647-2700 • www.srecoop.org

President/CEO

William R. Dodds
bdodds@srecoop.org

Chairman

Bernard Marvel, Browning

Vice Chairman

Terry Beam, Cuba

Secretary

Jack Clark, Lewistown

Treasurer

Lyle Nelson, Abingdon

Assistant Treasurer

Robert Lascelles, Ipava

Board of Directors

James Banks, Canton
Wesley Strode, Marietta
JoDee Pedigo, Canton
John Spangler, Marietta

Editor of Spoon River News

Taryn Mellert
tmellert@srecoop.org

Spoon River Electric Cooperative – By the Numbers

Miles of line energized: 1,272
Number of members served: 5,022
Number of power poles
in territory: 29,361

Energy Efficiency Tip of the Month

Trim your holiday energy costs by choosing energy efficient LED lights! LED holiday lights use less energy and can last up to 40 seasons. They're also easier to install – you can connect up to 25 LED strings without overloading a wall socket!

Source: energy.gov



FALL SAFETY TIPS FOR KIDS!

Fall is finally here! The leaves are changing, the weather is cooler and the holidays are just around the corner. But Fall also brings a higher risk of home fires and electrical safety hazards.

Read the safety tips below and fill in the blank with the correct term from the word bank.



1. Candles and _____ should only be used by adults.
2. An adult should always stay in the kitchen when something is _____.
3. Smoke alarms should be tested every _____ to ensure they are working. Batteries should be replaced at least once every _____ or right away if they start to "beep."
4. Make sure all _____ are blown out before leaving a room.
5. Keep any items that can burn away from the stove, toaster and other cooking _____.



WORD BANK

APPLIANCES YEAR CANDLES
COOKING MATCHES MONTH

Illustration by T. Mellert. Photo by K. Strode. © Spoon River Electric Cooperative.

What are GFCIs?

Are they required outdoors?

Did you know that ground-fault circuit interrupter or GFCI protection is required for all outdoor outlets, which are also known as outdoor receptacles?

The National Electric Code (NEC) began requiring GFCI installation on all outdoor outlets in 1975. Today, that rule stands with one uncommon exception – when homeowners have what is called a dedicated branch circuit for outdoor outlets.

GFCIs serve as important electrical system protection since they automatically trip as soon as anything goes wrong in a circuit. When working properly, they keep us from getting shocked or electrocuted. This is especially important around the home where water and electricity have the chance to mix, such as in bathrooms, basements, kitchens, garages and, of course, outdoors.

If you are planning a new outdoor space (or a remodel in any area of your home) that requires additional outlets, consult a licensed electrician. Outdoor outlets must be installed in outdoor-rated electrical boxes and must have special covers based on their type and location, among other requirements.

If you are still not convinced about the importance of GFCIs, consider this easy-to-understand explanation by This Old House:

A ground fault happens whenever electricity escapes the confines of the wiring in an appliance, light fixture, or power tool and takes a shortcut to the ground. When that shortcut is through a human, the results can be deadly. About 200 people in the U.S. alone die of ground faults each year, accounting for two-thirds of all electrocutions occurring in homes.

... The ground-fault circuit interrupter (was invented) in 1961. Most of the time, (the) invention does nothing; it just monitors the difference in the current flowing into and out of a tool or appliance. But when that difference exceeds 5 milliamps, an indication that a ground fault may be occurring, the GFCI shuts off the flow in an instant — as little as .025 second.

So with the advent of the GFCI, how do people become electrocuted by ground faults? Probably for one of several reasons:

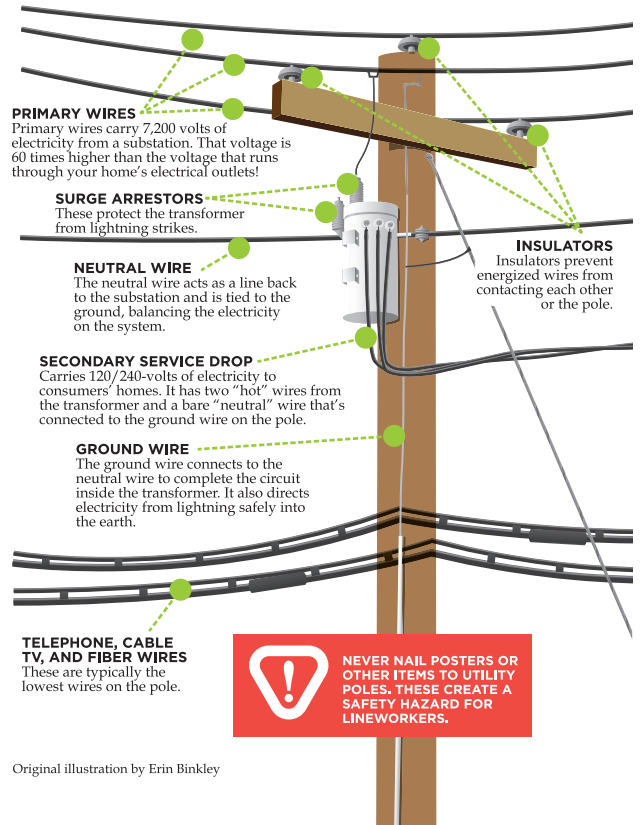
- Their GFCIs are not working properly. Test GFCIs monthly to make sure they are working and if not, have new ones installed.
- They live in an older home built prior to GFCI requirements or in a dwelling that is not up to code.
- They took on an electrical DIY project and were not qualified to do so.

“Take GFCIs seriously. Oftentimes, they are only as reliable as the person who installs, services and tests them,” said Energy Education Council Board Member Sam Adair.

For more information about electrical safety, visit SafeElectricity.org.

WHAT'S ON THAT POLE?

This illustration shows the basic equipment found on electric utility poles. The equipment varies according to the location and the service they provide.



Twelve 2020 IEC Memorial Scholarships available

Illinois electric cooperatives will award 12 scholarships in 2020 to financially assist deserving students in the electric cooperative family. The 12 scholarships, \$2,000 each, will be awarded through the Thomas H. Moore Illinois Electric Cooperatives (IEC) Memorial Scholarship Program.

Six scholarships will be awarded to high school seniors who are the sons or daughters of an Illinois electric co-op member. A seventh scholarship, the Earl W. Struck Memorial Scholarship, will be awarded to a student who is the son or daughter of an Illinois electric cooperative employee or director. Four additional scholarships are reserved for students enrolling full time at a two-year Illinois community college who are the sons or daughters of Illinois electric cooperative members, employees or directors.

The 12th scholarship, the LaVern and Nola McEntire Lineworker's Scholarship, will help pay for costs to attend lineworker school conducted by the Association of Illinois Electric Cooperatives in conjunction with Lincoln Land Community College, Springfield, Ill. Sons and daughters of co-op members, relatives of co-op employees or directors, and individuals who have served or are serving in the armed forces or National Guard are all eligible for this scholarship.

"Spoon River Electric and the other Illinois electric cooperatives are always seeking ways to make a difference in our communities. One of the best ways we can do that is by helping our youth through programs like this one.



In addition, we are very pleased to offer the electric lineworker's scholarship. It will benefit not only electric cooperative youth but also those fine men and women who have served their country through their military service and may now be wanting to become a trained lineworker."

For more information regarding the scholarships, contact Taryn Mellert at 309-647-2700 or tmellert@srecoop.org. Information is also available online at srecoop.org/community/scholarship-opportunities.



Thomas H. Moore Illinois Electric Cooperative Memorial Scholarship Program

The Illinois Electric Cooperative (IEC) Memorial Scholarship Program awards twelve \$2,000 scholarships annually to deserving students in the "electric cooperative family" entering college to assist them with their educational costs.

About the scholarships

- 6 scholarships are awarded to students who are the sons or daughters of an Illinois electric cooperative member receiving service from the cooperative (deadline to apply Dec. 31, 2019).
- 4 scholarships are reserved for students enrolling full-time at a two-year Illinois community college who are the sons or daughters of Illinois electric cooperative members, employees or directors (deadline to apply Dec. 31, 2019).
- 1 scholarship, the Earl W. Struck Memorial Scholarship, is awarded to a student who is the son or daughter of an Illinois electric cooperative employee or director (deadline to apply Dec. 31, 2019).
- 1 scholarship, the LaVern and Nola McEntire Lineworker's Scholarship, is awarded to a student to attend the lineworker's school conducted by the Association of Illinois Electric Cooperatives in conjunction with Lincoln Land Community College, Springfield, IL (deadline to apply April 30, 2020).