



2019 scholarship recipients recognized

Every year students compete for scholarships from area businesses and professional organizations to help with their continuing education. Shelby Electric Cooperative is one of the participating businesses. We would like to recognize the three area youth who received our 2019 scholarships: Ashlyn Finley of Pana, McKenna Kull of Shelbyville, and Elizabeth Curtin of Stonington. These winners were announced at the cooperative's 81st Annual Meeting in June and were awarded \$1,000 scholarships.

Finley is a recent graduate of Pana High School and will attend Southern Illinois University Edwardsville to major in nursing. She plans to work toward a nurse anesthiologist degree after completing her bachelor's with hopes of moving back to central Illinois to work at a private oral surgeon's clinic. She is the daughter of Shane and Nancy Finley.

Kull is a 2019 graduate of

Shelbyville High School and will be attending the Mennonite College of Nursing at Illinois State University to earn her bachelor's in nursing. She hopes to become a pediatric nurse at a hospital in central Illinois, helping children and their families during difficult times. She is the daughter of Kent and Tammi Kull.

Curtin, a recent graduate from Taylorville High School, will be attending the University of Central Missouri. She plans to major in nursing and would like to work in an intensive care unit after college while eventually returning to school to complete a program in anesthesiology. She is the daughter of Steve and Susan Curtin.

"It is always exciting to present these scholarships to the outstanding students around our service area. This is just one way we can give back to the communities we serve," noted Board Chairman Brent Lively, who

presented the certificates to this year's recipients. To see a short video clip of our recipients, visit the website or the cooperative's Facebook page.

Information about the 2020 scholarships will be sent to area high school guidance counselors in the fall. You can learn more about this and other scholarships on the cooperative's website, shelbyelectric.coop, under the "Community" tab or call the cooperative at 217-774-3986.



Shelby Electric Cooperative announced the winners of this year's scholarships at the 81st Annual Meeting of Members. This year's recipients, pictured from left, are Ashlyn Finley of Pana, McKenna Kull of Shelbyville, and Elizabeth Curtin of Stonington.

Meet our summer help

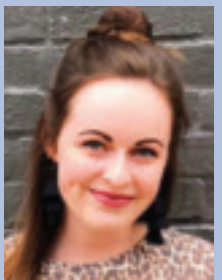
Operations welcomes Harley Williams



Harley Williams

Harley has been assisting the line crews by putting to use what he learned at lineman school. Previously he worked at Graphic Packaging before attending Southeast Lineman Training Center in Trenton, Georgia. He would like to make linework a career because he has been around this type of work his whole life. He enjoys every aspect of working with electricity and is looking forward to learning more from everyone in the operations department. Harley has enjoyed his work experience so far this summer, learning from everyone, and helping the cooperative members in any way he can.

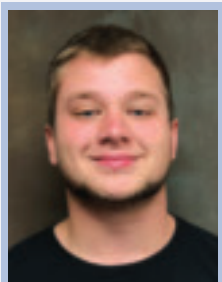
Member Services Department welcomes Faith Wheeler



Faith Wheeler

Faith finished up her finals as a freshman at Indiana State University (ISU) in Terre Haute, Indiana before moving into her internship position with the member services department. She is studying marketing with a minor in fashion merchandising. At ISU, she is involved with the Networks Professional Development Program and Sigma Kappa, where she is the VP of membership. Faith enjoys spending time with family and friends, being outdoors, and cooking. She will be specifically working on the kids coloring contest, assisting with proofing the Shelby News, and working on various administrative projects throughout the office. Faith is very excited to have this opportunity to be working at Shelby Electric Cooperative over the summer!

Shelby Energy Company welcomes Dillon Birch



Dillon Birch

Dillon will be a junior this fall at Eastern Illinois University where he is studying Kinesiology, the study of the mechanics of body movement. He also participates on the EIU track and field team as a shot-putter. When Dillon has free time, he enjoys fishing, hanging out with friends, and riding 4-wheelers. He will be cleaning and painting customers' propane tanks. Dillon is enjoying his experience with Shelby Energy.

Shelby Energy Company also welcomes Eli Courtright



Eli Courtright

Eli is a recent Shelbyville High School graduate and plans on attending lineman training school in Tennessee this fall. He likes to hunt, fish, and hang out with friends in his free time. He will be working with Dillon to pressure wash and paint propane tanks. Eli is thankful for the opportunity to work with the Shelby Energy crew and has enjoyed his time so far.



P.O. BOX 560
Shelbyville, IL 62565
Phone: 217-774-3986
or 1-800-677-2612
Pay-by-Phone:
1-855-385-9981
www.shelbyelectric.coop
twitter.com/YourCoop
facebook.com/YourCoop

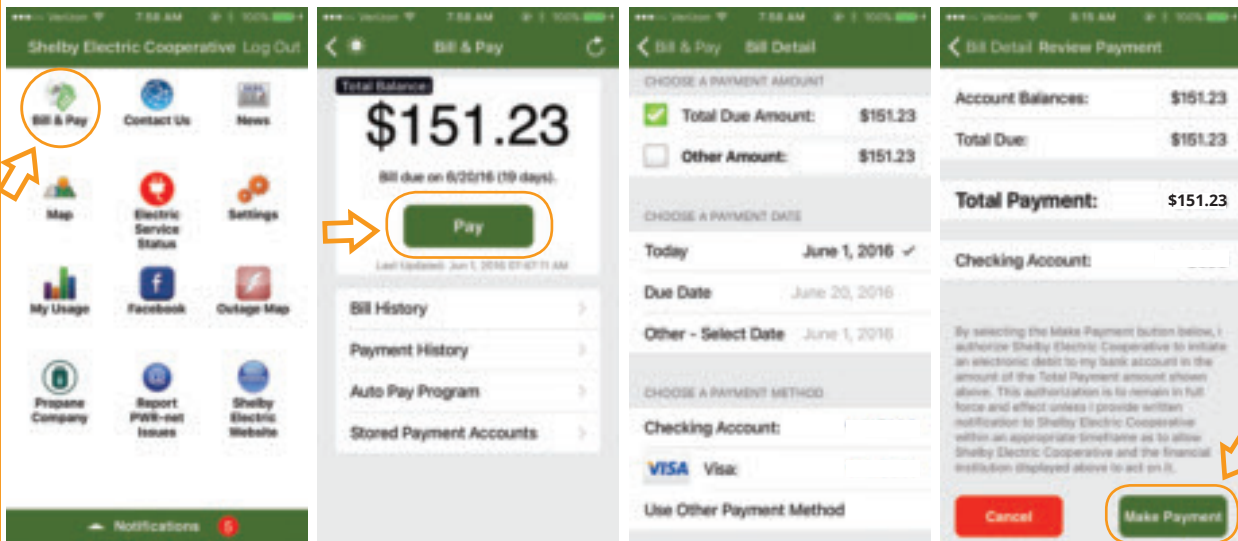
Office Hours:
7:00 a.m. - 4:00 p.m.



Your Touchstone Energy® Partner 

Schedule a payment with SmartHub

You may already know all the great tools the SmartHub app provides, but did you know you can now schedule a payment using SmartHub? It is easy! All you have to do is open the SmartHub app, select **“Bill & Pay”** then select **“Pay.”** Next, you will have the option to pay the full amount or select another amount you wish to pay. Then choose when you want the payment to be made. Finally, choose a payment method and select **“Make Payment.”** After reviewing your payment, if you made a mistake, just hit the **“Cancel”** button and start again. Once completed, you will receive a notification that your payment was scheduled. You will receive an additional notification when your payment has been processed. If you do not have the SmartHub app, download it today!



If you pay online, you can also schedule a payment. After logging in, if you choose to pay the full amount, select the **“Pay Now”** button at the top. Then choose when you want to schedule your payment and the payment method. To make a partial payment select the tab **“Billing & Payments,”** enter the amount you wish to pay and follow the easy steps. A notification will be sent when a payment is scheduled and when a payment has been received. A link to SmartHub is on the cooperative’s homepage, shelbyelectric.coop.



Shelby Electric Cooperative offices will be closed on Thursday, July 4th to celebrate our country’s independence!

Energy Efficiency Tip of the Month

When it’s warm out, avoid using the oven. Try cooking on the stove, using the microwave, or grilling outside instead.

Source: energy.gov



REAL LIFE  REAL POWER

Getting Real with Marla and Solar Lighting

Now is the perfect time of year to take advantage of the energy provided by the sun. One of the most economical and simple ways to do this is by adding outdoor solar lighting.

First, you will need to decide your outdoor lighting needs. Then read the packaging carefully before buying to determine if the product will meet your expectations. Following are some examples of types of solar lighting:

- **Garden lights** are a nice choice for decorating and adding a warm glow to your landscaping. Typically, the light produced by garden lights is not as bright and illuminating. Additionally, garden lights may not be weatherproof and should be removed when summer ends.
- **Path lights** tend to provide brighter lighting to help light your walking path. These lights are usually designed to last longer and are constructed with weatherproof materials.
- **Spotlights** provide a brighter light source. Use these lights in a walkway that receives more

traffic or to highlight something specific.

- **Motion-sensing lights** can be helpful if you do not prefer a light to be constantly illuminated. Plus, it can provide hands-free lighting; no fumbling for a switch.

As we prepare to celebrate Independence Day, there are even solar lights for flagpoles. Check your local hardware

store for options such as solar downlights that attach to the top of the flag pole, or spotlights that can be mounted on the pole or the ground to properly illuminate the flag at night. According to the American Legion's website, legion.org, proper illumination when flying the flag at night is considered a light specifically placed to illuminate the flag (preferred) or having a light source sufficient to illuminate the flag so it is recognizable.

To ensure reliable lighting, the solar panels for the lights must be positioned to receive the optimal amount of sun for proper charging. Before purchasing, read the product's directions to ensure the desired location for your project can provide the necessary solar requirements. Keep in mind that it may also



be necessary to periodically clean the solar panels. Dirty solar panels will interfere with the sun's ability to properly charge the storage batteries.

When choosing lights for safety and security more than decoration, consider that many solar lights are not designed to handle snow and freezing temperatures. Some are best stored inside during the winter months in our area.

Of course, if you really want to be economical, you may opt for the original, summer outdoor lighting — just catch a large amount of lightning bugs in a mason jar. Don't forget to poke holes in the lid!

*~Marla Pruemmer,
Communication Specialist*

Stay up to date on cooperative news, outages, events, and more!



Shelby Electric Cooperative
1-800-677-2612
1-217-774-3986
24-hours-a-day
  @YourCoop

Shelby Energy Company
1-217-774-2311
24-hours-a-day
 @ShelbyEnergyCo

PWR-net Broadband Internet
1-877-994-2323
7:00 a.m. - 4:00 p.m.
Please leave a message after hours
 @PWRnetFast