



Your Touchstone Energy® Partner 

Hi-Lites

2019 IEC Memorial Scholarships Available

Kim Leftwich has announced that the Illinois electric cooperatives in 2019 will award eleven academic scholarships to high school seniors through a memorial scholarship fund designed to financially assist deserving students in the electric cooperative family. In addition, a twelfth scholarship, to assist with costs in attending an electric lineworker school, will also be offered.

The twelve scholarships of \$2,000

each will be awarded in 2019 through the Thomas H. Moore Illinois Electric Cooperatives (IEC) Memorial Scholarship Program.

“We hope to assist electric cooperative youth while honoring past rural electric leaders with these scholarships,” says Leftwich. “CMEC and the other Illinois electric cooperatives are always seeking ways to make a difference in our communities. One of the best ways we can do that is by

helping our youth through programs like this one.”

For more information regarding the scholarships, contact Carla Bradbury, 217-235-0341 or cbradbury@cmeccoop.com. Information has also been shared with area high school guidance counselors and is also available for completion through a link on the cooperative’s website at www.cmeccoop.com.

Honoring CMEC Veterans – Thank you for your Service!



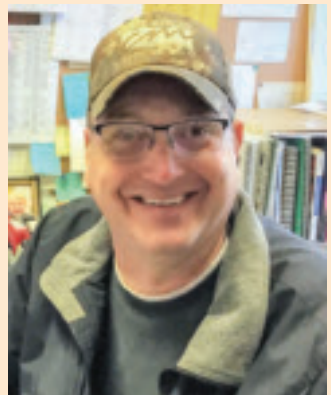
■ Carla Bradbury, MSR/Marketing, Air National Guard 1989-2000



■ James Geldert, Lineman Apprentice, Marine Corps 2012-2016



■ Kim Leftwich, President/CEO, Air Force 1970-1978 & ANG/AF Res 1979-1995



■ Dennis Ray, Field Engineer, Navy 1990-1995

We are Thankful for our Members

Our office will be closed November 22-23 in observance of Thanksgiving



P.O. Box 709 (104 Dewitt Ave., East)
 Mattoon, Illinois 61938

Phone: 217/235-0341 or
 Toll-Free: 1-888-661-CMEC (2632)
 Office hours:
 Monday-Friday
 7:30a.m. - 4:30p.m.

Chairman

Debbie Albin.....Mattoon

Vice Chairman

John Bowers Lovington

Secretary

Natalie ParkersonMattoon

Treasurer

Steve Shrader..... Westfield

Director

Jeffery D. Hudson..... Charleston

Kent Metzger Gays

Bill Voyles..... Sullivan

President/CEO

Kim Leftwich

To report an outage

- First check your fuses or circuit breakers and see if your neighbors have power.
- If the problem appears to be with the cooperative's lines, call the office at the toll free number (888-661-2632), give the name the service is listed under, and report any hazardous conditions.

Send your current email
 to info@cmeccoop.com



for a chance to win a
 \$25 bill credit.

President & CEO Report – August 2018

Safety

- AIEC performed monthly training utilizing the underground training trailer for experience on underground fault scenarios; apprentices were very active in the discussions.
- Recently, our two new apprentices were evaluated by supervisor and crew members; both Jim and Chandler are doing very well.

Rivian Automotive

- Dr. Peter Liu, Eastern Illinois University, and CEO Leftwich met with Rivian Automotive principals at EIU on Aug. 2.
- Through the Center for American Rural Energy (CARE), we are developing a working battery storage project with Rivian Automotive.
- Rivian has a unique battery pack that powers their electric vehicles but can be configured to provide battery storage solutions for electric utilities.
- The group began outlines of various unique applications that will be built, deployed and studied at cooperative locations.
- NRECA Business & Technology Strategies is participating as well. Bargaining Unit Negotiations

CMEC and IBEW

- Local 702 began negotiations to replace the current contract that expires Sept. 30, 2018.
- Multiple sessions are scheduled and expected to reach an accord.

AT&T Services

- Initiated discussions with AT&T regarding communications fiber to substations.
- CMEC has redundant communications capability presently through its communication ring; however, each of the current solutions has vulnerabilities that fiber would eliminate.
- Cost effectiveness is uppermost in our consideration.
- CMEC will be contacting other fiber providers to compare service and cost.

PPI Board Meeting

- Director Metzger and CEO Leftwich attended the PPI Board meeting Aug. 14 and 15.
- Speaking to the assembly was Don Gaston, President & CEO of Prairie State Generating Campus which includes Lively Grove coal mine and the generating station itself.
- PSGC has performed very well over the last several months; Gaston remarked about measures the mine/plant will take over the next few years that will continue improvement to the operation and make PSGC likely the most efficient operating coal fired generating plant in the country.
- PPI followed with their plans for continued cost improvement in the near term.

IEC Scholarship Committee

- CEO Leftwich participated in the AIEC Scholarship Committee meeting Aug. 16.
- Generally, the program has continued to garner funding, so we may fund multiple scholarships to children of cooperative members across the state.

Microgrid/Microgeneration Project

- CMEC staff hosted Open Access Technologies, Inc., (OATI) on Aug. 17 to outline a potential microgrid/microgeneration project.
- Microgrids require sophisticated control systems and software for optimal performance, safety and reliability. OATI is well known for its exceptional control systems and could be the perfect partner to help CMEC develop a unique energy approach. Presently, we are in study phase to determine needs and cost projections.
- NRECA Business and Technology Strategies is working with us on project development.

PPI Solar Interconnection Summit

- Staff attended the interconnection summit to learn of measures for insuring solar developers meet appropriate interconnection with CMEC.

- Guidance is useful as the Future Energy Jobs Act (FEJA) has created interest.

Congressman Shimkus Visit

- CEO Leftwich was invited by the Mattoon Chamber of Commerce to attend Congressman Shimkus' Roundtable Aug. 30.
- The Roundtable was offered as part of the U.S. Chamber of Commerce initiative "Spirit of Enterprise."
- The Congressman provided insights into issues being addressed by Congress regarding Intellectual Property.

CMEC Connect

- CMEC Connect continues to operate in the black making a contribution to margin of the cooperative.
- Aug. 6, we completed a spur site near Lakeside Villa. In less than two weeks, the spur had 10 subscribers meaning the site will pay for itself in a few months. It is evidence that our expansions reach rural members that have little to no internet connectivity.

Marketing/Member Services

- CMEC will again participate in Cooperative Month in October. Checkout our website and Facebook page for giveaway days for members, volunteer day, Co-op Connections Day, Red Cross blood drive and many more events.

Key Accounts

- CMEC has had great success with its Key Accounts Conference held each spring. We have offered surrounding cooperatives the opportunity to join us in a Regional Conference. We feel the expanded group could provide broader programs to all C/I attendees.

Accounting/Finance

- Cleaning up Work Orders still open for \$236,000+; need to be closed.
- Cleaning up Capital Credit matters on broadband customers.
- Preparing to provide 2017 Patronage Capital Allocations on CMEC bills.
- Preparing Capital Budget to provide to the Board.

LED Lighting

- We continue to replace security and street lighting with LED lamps. Some 2,121 mercury vapor and high-pressure sodium lights have been replaced.

Engineering

- Final steps underway for completion of the H1 mile project; the process includes obtaining permits for boring under a railroad and State Route 45 to supply Feeders 1-1 and 1-2 to the new double circuit built to the west.
- Staking the W1/W1A miles to begin construction, part of the Construction Work Plan; this rebuild will upgrade Feeder 2-1 from 336 ACSR to 1/0 conductor.
- Some 335 locate requests received and 13 Report-On-Calls received and assigned for member service requests; manual meter reads totaled 201 largely due to foliage.

Operations

- Completed the H1, H2, H3 and H4 mile rebuild with exception of the feeders out of the substation (see engineering above).
- Initiated an automated call system allowing MSR's to record a message, input a Member listing (Excel file), and send messages to members regarding maintenance outages, other maintenance issues that would affect their day, etc. Cost is minimal and highly efficient.

IT/SCADA

- Completed Wi-Fi hotspots throughout CMEC territory; crews/servicemen may go to any of the 55 hotspots, send in data or receive new orders securely and efficiently.
- Substation automated breaker tests are underway, and data is much as we expected; CMEC plans to install automated breaker sets in all substations by mid-2020; the automated capability provides means for us to make changes or rerouting of power/load from head-end headquarters systems rather than rolling a truck; saves time, saves money and improves safety.
- Visiting fellow co-ops to study distribution automation set-ups to help in our roll-out; their experience will help us avoid issues in deployment.



Capital Credits

Electric cooperatives operate at cost. This allows any excess revenue, called margins, to be returned to members in the form of capital credits. Coles-Moultrie Electric Cooperative (CMEC) tracks how much electricity members buy and pay in revenue throughout the year. At the end of the year, our board of directors (BOD) review financial matters and determine whether the cooperative has margins. We then allocate the margins back to our members as capital credits based upon their use of electricity. When financial conditions permit, the BOD will retire or pay the capital credits. We will be retiring close to \$1 million in November representing those margins for the years 1977-1979.

Monthly Board Meeting Minutes can be viewed on our website: www.cmec.coop



Take time to VOTE on November 6!

SAFE DÉCOR FOR A HAPPY HOLIDAY SEASON

It's almost time to deck those halls! Statistics show that home fires and electrical accidents typically increase during winter months, so keep these holiday lighting tips in mind for a safe holiday season.

Carefully inspect all electrical decorations before you use them. Cracked or damaged sockets and/or loose or exposed wires can cause serious shock or start a fire.



Consider purchasing LED lights, which use less energy and run cooler than traditional incandescent lights.



Never mount or support light strings in a way that might damage the cord's insulation.



Make sure that cords are not pinched in doors, windows or under heavy furniture, which could damage the cord's insulation.



Always unplug electrical decorations before replacing bulbs or fuses.



Turn off all indoor and outdoor electrical decorations before leaving home or going to sleep.

Source: Electrical Safety Foundation International



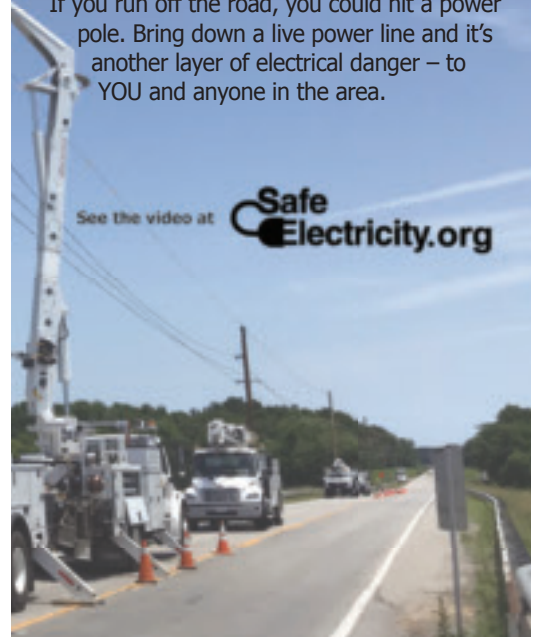
ZONE IN ON SAFETY

Distracted driving and electrical safety are connected.

Utility crews often work in an office with a 55-mile-per-hour speed limit and heavy traffic. Hit a utility truck and the lineman in the bucket could be pushed into a high voltage line. Kill or injure a lineman and you could pay a large fine and go to prison.

If you run off the road, you could hit a power pole. Bring down a live power line and it's another layer of electrical danger – to YOU and anyone in the area.

See the video at 



HomeServe USA

Homeowners can help protect against the expense and inconvenience of water, sewer, electrical, heating, cooling and other home emergencies by signing up for affordable coverage. HomeServe provides quality home repair service solutions to CMEC members.

Contact them for details at www.homeserveusa.com or 833-334-1874.

Home repair plans for CMEC customers