



www.mcdonoughpower.com

The Wire

McDonough Power Cooperative • Macomb, Illinois 61455



Mike Smith
President and CEO

Youth Day and Youth to Washington Tour

High school sophomores and juniors with a passion for leadership and government are encouraged to apply for an all-expenses-paid trip to Washington, D.C. in June!

Up to 12 students will represent McDonough Power Cooperative along with more than 125 other youth from other Illinois electric cooperatives in Illinois Electric and Telephone Cooperatives Youth Day in Springfield set for April 18, 2018. The activities in Springfield will include touring the State Capitol complex, meeting with legislators, visiting the Lincoln Museum and a luncheon. Transportation to Youth Day in Springfield will be provided by the cooperative.

From that group, up to two students will be chosen to represent McDonough Power by attending the Youth to

Washington Tour, an all-expense-paid trip to Washington, D.C. June 8-15, 2018 with other statewide winners.

The Youth to Washington Tour has been bringing high school students to Washington, D.C. for over 50 years. On the tour, students learn about electric cooperatives, American history and U.S. government and walk away with a greater understanding of their role as an American citizen. They participate in National Youth Day, visit with their representative and senators and explore the sights around the nation's capital. **7215A3-112B**

Interested students should meet with their high school guidance counselor to express their interest in attending. Guidance counselors have been asked to submit student names by mid-February, so act now.



Dates to Remember

Illinois Youth Day – April 18

Youth to Washington – June 8-15



1210 West Jackson Street
P.O. Box 352
Macomb, Illinois
61455-0352

309-833-2101

www.mcdonoughpower.com

Office hours:
7 a.m. - 4 p.m. - Weekdays



DIRECTORS

Jeff Moore, Chairman

Walt Lewis, Vice Chairman

Steve Youngquist, Secretary

David Lueck, Treasurer

Jerry Riggins

Mike Cox

Bob Dwyer

Steve Hall

Steve Lynn

John D. McMillan, Attorney

**All Co-op Electric
Outages 837-1400**

A Touchstone Energy® Cooperative
The power of human connections



LaVern and Nola McEntire Lineworker's Scholarship deadline approaching

The LaVern and Nola McEntire Lineworker's Scholarship was awarded for the first time in 2011. This \$2,000 scholarship helps pay for costs to attend the lineworker's school conducted by the Association of Illinois Electric Cooperatives in conjunction with Lincoln Land Community College, Springfield, Ill. LaVern McEntire served as a lineman for McDonough Power Cooperative from 1949 until 1991. He and his wife, Nola, endowed the scholarship to financially assist deserving individuals in becoming trained lineworkers. Sons and daughters of co-op members; relatives of co-op employees or directors; individuals enrolled in

the Lincoln Land lineworker's school; and individuals who have served or are serving in the armed forces or National Guard are all eligible for the lineworker's scholarship.

To apply, the applicant must meet the required criteria as outlined in the "Official Rules & Regulations" and complete the scholarship application available in the Scholarship section under the Community tab at www.mcdonough-power.com. Each applicant is responsible for submitting all information required to apply for a scholarship and for returning the application to McDonough Power Cooperative by April 30, 2018.

Simplify with automatic payment

It's not too late to make a New Year's resolution. Simplify your life by signing up for automatic payment. You'll mark one item permanently off your to-do list. And best of all, you'll never have to worry about the mail delivering your check late or forgetting to make a credit card payment on the phone or online by the due date.

You have a couple of options:

- Log in to your online account at www.mcdonoughpower.com. Click on the Payments tab and select Auto Pay. This allows you to choose the day of the month that you would like your payment deducted from your account.
- Call or stop in our office to set up an automatic draft. Your net due amount will be automatically deducted from the account you specify on the 15th of each month. You'll still receive a bill statement in the mail (or by email if you choose) each month so you'll know exactly how much you need to deduct from your account. **9226D6-317B**

If you need help or would like additional details please contact us by email at memberservices@mcdonoughpower.com or call us at 309-833-2101.

McDonough Power Cooperative's Net Metering Policy

The maximum size of eligible renewable systems that can be connected under McDonough Power's Net Metering Policy is 10 kW. The total capacity of all wind, solar or other renewable systems that can be connected to the cooperative's lines is 5 percent of our annual peak demand. McDonough Power's Net Metering Policy and Interconnection Policy is available by request. Please call McDonough Power before installation. If you're considering a solar system, remember that it is your responsibility to contact us while you are still in the design phase. Please contact Kelly Hamm if you have any questions 309-833-2101.

Preparation is power: Weathering winter outages

Anyone who has weathered prolonged outages due to an ice or winter storm will tell you it is more than inconvenient. Such an outage during cold weather creates an additional set of challenges and safety requirements. Prepare now to ensure you're not left in the cold when the next one happens.

Safe Electricity recommends assembling an emergency kit with essential items such as:

- Flashlight, portable radio and extra batteries
- First aid kit and essential medicines
- Non-perishable food
- Bottled water
- Basic tools and related materials
- Extra blankets and clothing to dress in layers
- Outerwear at the ready, including hats, gloves and scarves
- Rags or duct tape to seal air leaks

If you have a wood stove or fireplace, have plenty of wood on hand, and if you have a fuel-based heater, have extra fuel and the means to vent the fumes.

Know how you can get area weather updates, such as a weather radio, mobile notification system you can enroll in, mobile app, etc. Visit state and local websites for emergency outage plans in your area. Develop an emergency plan with your family so everyone knows what to do in an outage. Keep your mobile devices fully charged and ready to use when a storm is headed your way.

Additional tips for weathering a cold weather outage:

- Dress in several layers of warm clothing. Wear a hat to avoid the loss of heat from your head
- Reduce the amount of wasted heat during an outage by closing doors to rooms not being used and securing curtains and blinds to reduce heat loss from windows
- Never use an oven or charcoal grill to heat the home
- Reduce the risk of spoiling food during an outage by lowering the temperature of your refrigerator as low as possible, and avoid opening the



refrigerator doors unless it becomes necessary. By doing so, you can keep your food cool for up to 24 hours

- Protect your sensitive electronics by unplugging devices such as televisions and computers. Use surge protectors to protect electronics when power comes back on
- Be alert to the signs of frostbite, which can include loss of feeling in the extremities, and hypothermia, such as shivering, memory loss, incoherence or drowsiness.
- Use caution when going outside. Downed power lines could be hidden by snow or ice. If you see a downed power pole or line, stay far away and report it to your electric utility.

A portable generator can provide power in the event of an outage. Have an electric cord long enough to keep the generator at least 20 feet from any door, window or vent to keep carbon monoxide out of the home. Read your instruction manual before use and operate your generator in well-ventilated areas. **5312CPT40-950A**

Never use a portable generator in the home or garage –and never plug it into a home wall outlet or connect it directly to the home's electrical system. Install battery-powered or battery back-up carbon monoxide detectors near floors on each level of the home.

For more information on electrical safety, visit SafeElectricity.org.

Energy Efficiency Tip of the Month

Consider insulating your hot water pipes. Doing so can reduce heat loss, allow you to lower the temperature setting and save an additional 3 to 4 percent per year on water heating.

Source: energy.gov





Keep your home safe from electrical fires

Your lights turn on in an instant, and your plug slides into outlets without sparks or shocks. You can't see it, and typically don't think much about it. However, the electricity that we take for granted every day requires attention to prevent potential hazards. Safe Electricity offers these tips to help keep your home safe from electrical problems and fires:

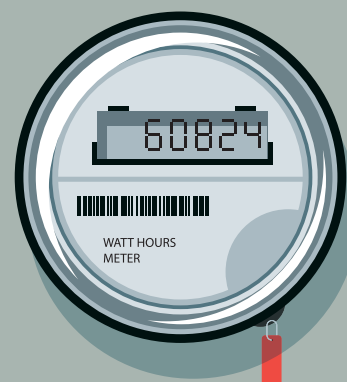
- Have all work done by a qualified electrician.
- Get regular check-ups for older homes, which have older wiring and are often designed for fewer appliances and electronics. Have the electrical system checked every five to 10 years, depending on the age of your home. If your home is older than 30 years, make sure the wiring meets updated National Electrical Code standards.
- Watch for warning signs such as hot or discolored switch plates, cords or plugs; dimming or flickering lights; buzzing or sizzling sounds. If you smell a burning odor, check it out immediately and unplug electric items in that area.
- Immediately repair loose outlets, and discard or replace cracked, cut or broken insulation on electric cords.
- Keep cords out of walkways and high traffic areas so they don't get stepped on, damaged or cause a tripping hazard.
- Use extension cords temporarily, not as permanent wiring. Too many extension cords in one area creates a risk of overheating or overloading circuits.
- Never use cords or appliances that have exposed, damaged or faulty wiring. Have them repaired or replaced.
- Avoid using nails or staples to secure electric cords in place. When an electrical cord is punctured, it increases the likelihood of electric shock and fire.
- When you replace light bulbs, ensure that you match the recommended wattage for your lamp or other light fixtures. Using an incorrect wattage increases the likelihood for electrical fires. **101E7C2-408C**
- If small children are present, install tamper resistant outlets or use outlet covers to reduce the risk of shocks and fire.
- Educate your loved ones on the dangers of electricity and provide guidance on care for your appliances and electronics.

Electrical safety can also reduce energy waste and save on the power bill. Turn off electronics and lights when they are not in use. This reduces heat as it lower electricity use.

Learn more about home electrical safety at SafeElectricity.org.

DO NOT TAMPER WITH YOUR ELECTRIC METER

Meter tampering can result in electric shock, is illegal and increases electricity rates for other co-op members.



- ⊘ Never break a meter seal.
- ⊘ Never open a meter base.
- ⊘ Never remove a meter or alter an entrance cable in any manner.

If you know or suspect that someone has tampered with their meter, please contact us immediately.



Member Prizes

Every month we will have four map location numbers hidden throughout The Wire. If you find the map location number that corresponds to the one on your bill (found above the usage graph), call our office and identify your number and the page that it is on. If correct, you will win a \$10 credit on your next electric bill.