

JANUARY 2005

A Touchstone Energy® Cooperative 

E.O.E. (M/F/H)

Candidates Nominated For Board Positions



Back row from left to right: Arlis Springer, Gary Moncelle, Alan Peters, Marvin Polte, R.D. Henry, James Rafferty, and Kenneth West. Front row from left to right: Paul Dubravec, Robert Haas, Terry Longman, Ken Siegrist, Gene Hoffman, and Peter Borowski.

The Nominating Committee met at the Corn Belt Energy Office on November 23, 2004, to nominate candidates for five board positions to be filled by election at the annual meeting of members on March 12, 2005. The committee nominated the following members for election: Michael Killian of Lexington for District 1; Rae Payne of Bloomington for District 1; Jerry Starkey of LeRoy for District 1; Dennis Fredrickson of Victoria for District 6; and Al Hagenbuch of Utica for District 8.

Corn Belt Energy members are invited to attend the 67th Annual Meeting of Members to be held at Normal Community High School on March 12, 2005. Cooperative members will have an opportunity to vote on board mem-

bers, hear corporate updates and talk with Corn Belt Energy employees and directors.

The program will include reports from the co-op's President and the Board of Directors Chairman and Treasurer. There will also be entertainment and drawings for prizes. Coffee, tea, milk, and donuts will be served during morning registration, which begins at 8:00 a.m. The meeting will begin at 10:00 a.m. and last until noon. A complimentary lunch will be served in the cafeteria following the meeting.

Exercise your rights as a Corn Belt Energy member/owner and attend this year's Annual Meeting. Make lunch reservations online at www.cornbeltenergy.com or call (309) 662-5330 or (800) 879-0339.

Standby Generator Safety

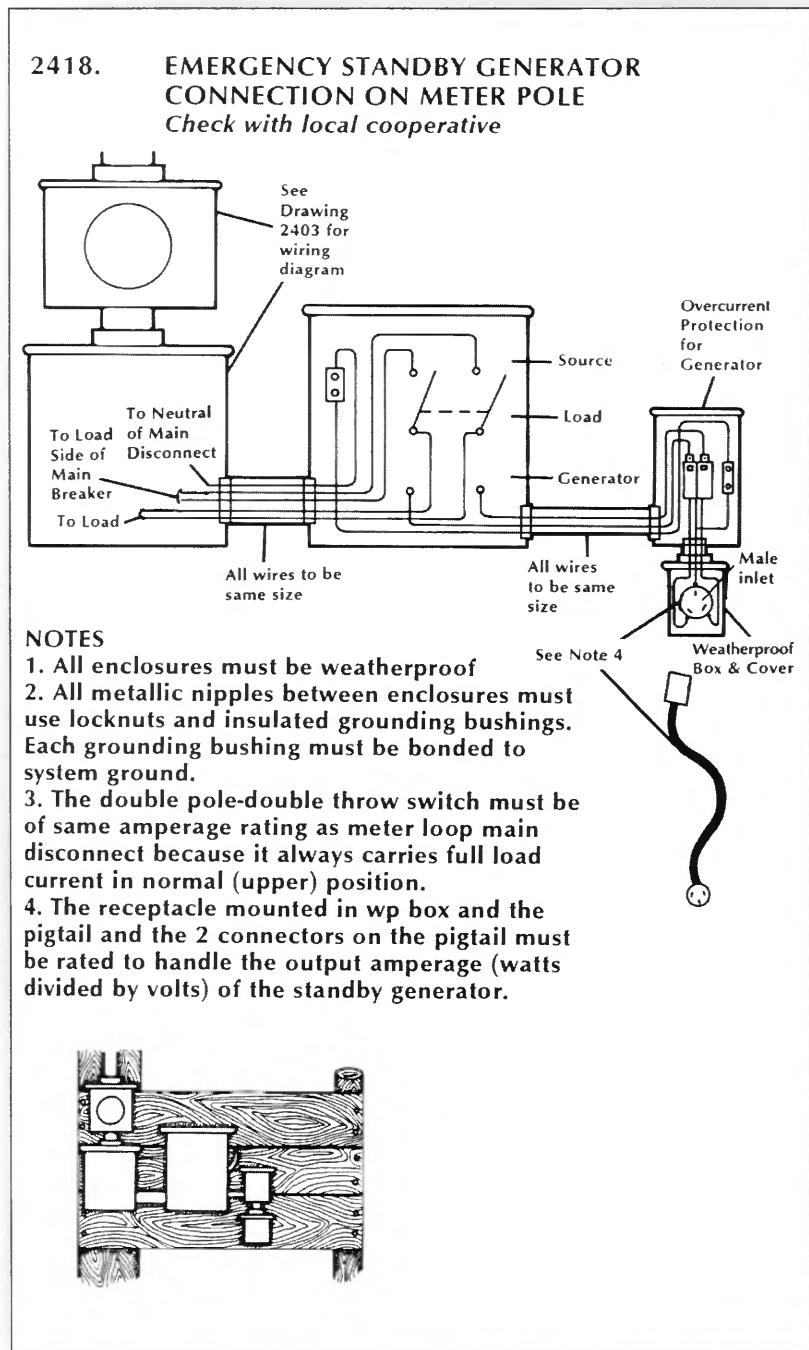
All of us are dependent on electricity to keep us comfortable, run appliances and light our homes. For members who have businesses, wells, electric heat, electric farm equipment for livestock, or require life-support equipment, prolonged power outages are more than just an inconvenience.

At Corn Belt Energy, service reliability is our primary goal, but occasionally, prolonged outages can occur. These outages are usually due to severe weather and are unavoidable. If your life or livelihood depends on continuous energy, you might want to consider buying a standby generator for your farm, home or business.

Whether you buy a 35,000-watt generator or a 2,000-watt unit, you should be absolutely certain your unit is isolated from Corn Belt Energy's power lines any time it is generating current. **Improper installation will ruin your generator when the power comes back on and could back-feed into Corn Belt's system and give a lethal shock to linemen who are working on the lines!**

The National Electrical Code requires the installation of a double-pole, double-throw, or transfer switch. This switch must be sized according to the rating of your service entrance equipment. Common sizes are 100, 200, or 400 amperes. Sometimes automatic switches, which are part of a control panel, are used when standby service is automatic.

Another problem associated with back-feeding is that the generator may be capable of producing more amperage than the individual household circuit can safely handle. This



can cause overheating in your home circuits and create a fire danger. In addition, when the power is restored, it can feed directly into your generator, causing severe damage to your generator.

If you have any questions about whether your generator is

installed properly with the correct switch call Corn Belt Energy at (800) 879-0339, Ext. 222 or Ext. 228. Our service personnel will inspect your installation at no charge. For the protection of our linemen and your property, don't use your generator until you're absolutely sure it's safe.

CORN BELT ENERGY CORPORATION, BLOOMINGTON, ILLINOIS

Expanding Education Opportunities



Today's high school students have greater academic and extra-curricular demands on their time. This year we have reformatted the contest to accomplish two things - make it less time-consuming for students to apply for the Washington trip, and provide educational opportunities to a larger group of students. Therefore, we have split the program into two parts:

- **Youth To Washington Trip** - Two students will win all-expense paid trips to Washington, D.C.
- **Education Grants** - Four schools will be awarded \$1,000 to be used for innovative programs that will enrich students' education.

Youth To Washington Trip

Eligibility: Students who are sophomores, juniors, or seniors, and are sons or daughters of Corn Belt Energy members can apply. Applications are available online at www.cornbeltenergy.com or by calling (800) 879-0339, Ext. 250. Applications and information are also being sent to area schools. Completed applications must include a teacher or school official's reference and signature and be received in Corn Belt Energy's office no later than close of business on February 25th. A panel of independent judges will review all qualified applications. Finalists will be interviewed and selected based on the four key Touchstone Energy principles: accountability, integrity, innovation, and commitment to community.

Prizes: The two winners will be invited to participate in Youth Day in Springfield this spring, where

they will tour government buildings and meet state legislators. They will also travel to Washington, D.C. in June along with students who are selected from other electric cooperatives throughout the state.

While in Washington, they will visit historical national sites, various monuments, and government buildings. It's a great opportunity to meet Congressional legislators and learn first-hand more about how the government process works.

Education Grants

It's widely recognized that our schools are limited financially in the programs they can offer. With that in mind, we are offering all schools within Corn Belt Energy's service territory an opportunity to apply for a \$1,000 education grant! Four schools will be selected based on the need and/or impact of the program on the school.

It's easy to apply. Encourage your school's teachers or administrators to apply online at www.cornbeltenergy.com. They will be required to give specific details about a program need in their district. The grant is available for pre-school, elementary, or secondary level programs. The deadline to apply is March 31, 2005.

An independent panel of judges will evaluate the applications. After careful consideration, four schools will be notified that they are the winners! For additional information, please visit our Web site or call (800) 879-0339, Ext. 250.

Share this information with your teachers or school officials today and encourage them to apply for Corn Belt Energy's Education Grants!

CORN BELT ENERGY CORPORATION, BLOOMINGTON, ILLINOIS

Be Prepared For Safe Winter Travel

According to the U.S. Department of Commerce, 25 percent of winter deaths can be attributed to people being caught out in a storm. The National Weather Service reports that many of these winter deaths occur when people attempt to leave their vehicles during a storm to walk to safety.

To stay safe, stranded drivers should stay with the car, tie a piece of colored cloth to the car's antenna, and keep the car running while using the heater 10 minutes out of each hour.

People should remember to keep their interior lights on while the engine is running and be sure the exhaust pipe is clear of snow and ice. Crack the windows slightly to allow in fresh air and avoid carbon monoxide poisoning. To prevent hypothermia and frostbite bundle up in woolens or a blanket. If these



aren't available, move your arms and legs constantly to keep the blood flowing.

If travel is necessary in stormy weather, it's best to inform someone of the travel route, destination, and expected arrival time. Travelers should remember to keep their gas tanks near full to avoid ice in the tank and fuel lines, and keep a winter travel survival kit in the car.

Winter Travel Survival Kit

- Battery-powered radio and extra batteries
- Flashlight and extra batteries
- Blankets or sleeping bags
- Booster cables
- Fire extinguisher (5lb., A-B-C type)
- First aid kit and manual
- Bottled water and non-perishable high-energy foods such as granola bars, raisins, and peanut butter.
- Compass and road maps
- Shovel
- Tire repair kit and pump
- Flares
- Extra clothing to keep dry
- Sack of sand or cat litter (for tire traction)
- Tow rope
- Knife

Sources: American Red Cross; National Weather Service; National Safety Council

Outage Report

The following outages affected more than 100 members. Please see our Web site at www.cornbeltenergy.com for a complete list of substation and feeder outages.

Date	Time	Members	Areas affected	Reason for outage
08/17/04	5:10 p.m. - 6:48 p.m.	190	Norway area	Car accident caused broken pole
08/25/04	5:42 p.m. - 7:10 p.m.	178	Goodfield and Congerville areas	Lightning caused fuse to open
08/26/04	4:15 a.m. - 6:14 a.m.	317	Wedron area	Wire down
09/01/04	1:15 p.m. - 1:16 p.m.	1605	Parkside area (Normal)	Blink on AmerenIP transmission
09/08/04	11:40 a.m. - 2:09 p.m.	387	South Bloomington area	Wire down
09/13/04	2:27 p.m. - 3:10 p.m.	1,315	Annawan, Neponset, Mineral, Ladd, Buda, Wyanet, Sheffield, Manlius, Tiskilwa & Princetown areas	AmerenIP transmission problems
09/15/04	7:20 a.m. - 8:45 a.m.	278	Ladd area	AmerenIP had debris in transmission line
09/15/04	8:55 p.m. - 12:12 a.m.	230	South Bloomington area	Line out from burnt jumper
09/23/04	10:00 a.m. - 11:00 a.m.	120	Goodfield area	Construction crew caught overhead line.
09/26/04	12:45 p.m. - 2:30 p.m.	152	Hopedale area	Car accident caused broken pole
10/01/04	9:07 p.m. - 10:00 p.m.	188	Bloomington area	Unknown
10/11/04	10:40 p.m. - 2:51 a.m.	143	Hedgewood Subdivision in Bloomington	Faulty underground primary
10/23/04	2:50 p.m. - 4:10 p.m.	438	Danvers and Bloomington areas	Wire down
10/26/04	9:00 a.m. - 9:25 a.m.	842	Holder and Bloomington areas	Bird caused arrester to blow
10/26/04	4:40 p.m. - 7:10 p.m.	141	Danvers and Bloomington areas	Vehicle accident
10/30/04	1:55 a.m. - 8:41 a.m.	269	Wapella, Clinton and Maroa areas	Tree in AmerenIP transmission line
11/01/04	6:30 a.m. - 8:25 a.m.	120	Norway area	Wind blew tree limb into power line

CORN BELT ENERGY CORPORATION, BLOOMINGTON, ILLINOIS

FEBRUARY 2005

A Touchstone Energy® Cooperative



E.O.E. (M/F/H)

Growing Our System Reliability



In mid-December 2004, a tractor and trailer measuring 126 feet long and supported by 13 axles and 50 tires delivered the transformer for Corn Belt Energy's new Brokaw Substation. The trailer, valued at half a million dollars, was equipped with a separate motor and hydraulics to steer the rear wheel system to position the 145,000 pound transformer. After five days on the road from Canada, the 37,000 kva transformer was lifted by a 300-ton crane and positioned on its 20' X 15' concrete pad.

The new substation is located approximately ¼ mile south of Ireland Grove Road on Towanda Barnes, in front of AmerenIP's substation. Once construction is completed in the spring, the massive transformer will be connected to AmerenIP's transmission lines to step down 138,000 high-voltage electricity to 12,500 volts, to be delivered across Corn Belt Energy's distribution lines. Much smaller transformers that are located at members' homes step down the electricity to 120/240 volts.

This is the second new substation within Corn Belt Energy's distribution system during the past year. Towanda Substation, like Brokaw, has the capacity to supply electricity to approximately 8,000 families. The Towanda Substation is located west of Towanda Barnes Road on Raab Road, southeast of Normal Community High School. It went online in the spring of 2004. Both substations were built to accommodate the growing population in the Bloomington/Normal and surrounding rural areas.

Brokaw Substation will serve two purposes. It will handle new load as it develops and improve reliability by providing back-up capacity for other substations east and southeast of Bloomington.

When construction is completed, the new substation will cost approximately \$1.5 million and will be the 41st substation on Corn Belt Energy's system. The co-op currently serves more than 30,000 electric members in 18 counties in northern and central Illinois.

Frequently Asked Questions About Power Outages

1. What should I do if my power goes out?

Before calling the cooperative, first check your breaker box to determine if the cause of the power failure is inside your home or business. If it's night, look outside to see if streetlights and neighbors' lights are also out. If it appears that the problem is on Corn Belt's system, call us. It doesn't matter what time it is or what the weather conditions are, Corn Belt Energy linemen will be dispatched.

When you call (800) 879-0339, select option 1 to report your outage. Listen carefully and follow directions on the automated system. If you're calling from your home number and it's listed in our computer records, the outage system will match your phone number with your account information. If you're calling from a cell phone or from a different location, you will be asked to enter the phone number where the power is out. A third option allows you to leave a voice message.

Please note: The phone number listed on the bottom of your energy bill is the number we have in our records. If that number isn't correct, please write the correct number on your bill stub and return it with your payment.

2. How does Corn Belt prioritize outage restoration?

- Line personnel first repair substations and major lines, followed by equipment on the taps leading away from the source. By repairing three-phase services first, followed by single-phase

services, we are able to restore power to the greatest number of members first.

- Priority is also given to key services essential to community safety, health, and welfare – such as hospitals, police, fire, communications, and water, sanitary, and transportation providers.

3. Does Corn Belt Energy know when I've lost electric power, or should I call to report my outage?

Don't assume someone else has called Corn Belt Energy to report the outage in your area. When more than one person calls, our outage system identifies all common devices leading back to the substation. If only one person calls, it may appear the outage is isolated to just one service. When calls are received from various segments along the distribution line, it alerts personnel to the source of the problem.

4. Should I call again if my neighbors get their power restored and I still don't have it?

Yes. There may be damage to your individual electric service.

5. How can I tell if a fallen line is energized?

Treat all downed and hanging lines as if they are energized electric lines. Stay away, warn others to stay away, and immediately contact Corn Belt Energy. Call the local police department if the line is down in an area that would endanger public safety.

6. Who is responsible for trimming trees that fall in or near power lines?

Removing trees and debris that have damaged electrical equipment is one of our top priorities. If a tree or limbs have fallen onto a power line, do not attempt to get close to the line or the tree. Call Corn Belt Energy and report the line is down.

7. Why would Corn Belt Energy crews pass my house without repairing anything?

If you see a CBEC crew passing but not stopping, it may be because work at a nearby location must be performed before electric service can be restored to you and your neighbors.

8. Will CBEC pay for food that spoils during an outage, or damage to appliances, electronic equipment, or other personal property damaged during power restoration?

Corn Belt Energy cannot guarantee uninterrupted service due to forces beyond the co-op's control. Therefore, CBEC is not responsible to pay for food that might spoil during an electric outage, or to replace electrical equipment that is damaged during power restoration. During an extended power outage, avoid opening refrigerators and freezers to prolong the life of perishable foods. Unplug appliances during an outage and leave one light turned on, so you'll know when the power is restored.

9. I have underground electric service. Why should I ever experience a power outage during a storm?

Even though the service line to your home is underground, the electricity that is delivered to your home is carried through overhead transmission and distribution lines. Therefore, any damage along the path leading to your transformer will interrupt your electric service.

10. Why can't CBEC give more specific information about when my power will be restored?

During a widespread outage, there may be several factors involved in the cause of your outage, and therefore CBEC crews can't restore your power until all those conditions are corrected. Sometimes that includes loss of transmission service to our substations from our transmission provider.

Is A Household Member Dependent On Electric Life-Support Equipment?

If the answer is "Yes," you can register for our critical care priority list. Simply fax or mail us a letter completed by a medical provider, which states the medical condition. Also include the patient's name, the name on the Corn Belt Energy account, the address, and phone number. The fax number is (309) 663-4516, and the address is Corn Belt Energy Corp., P.O. Box 816, Bloomington, IL 61702-0816.

Please note: This does not guarantee uninterrupted service. You are advised to have back-up generation or make arrangements to relocate the patient if necessary.

Plan To Attend the 67th Annual Meeting of Members

Meet with the people who manage your electric cooperative at this year's Annual Meeting of Members on Saturday, March 12, 2005. The new location is the Normal Community High School located on Raab Road in Normal. Registration forms and additional information are included in the corporate report that will be mailed to you around the middle of February. Watch your mail and register for Corn Belt Energy's Annual Meeting of Members.

Attention Teachers and Administrators



Enter Corn Belt Energy's Education Grant Competition and your school could win \$1,000 for a project that will enhance classroom education!

Four K-12 schools, in which children of Corn Belt Energy members are enrolled, will be awarded \$1,000 each to be used for innovative programs to enrich their student body's education. To apply, complete the application form that is available online at www.cornbeltenergy.com or by calling (800) 879-0339, Ext. 250.

The deadline for receipt of all entries is March 31, 2005.

**Four schools will win \$1,000 grants!
Why shouldn't your school be one of the winners?**

Outage Report Available Next Month

Due to the workload created by the widespread outages that occurred in November, the monthly outage report was not available at the time of this publication. Reporting for this period will be available in next month's issue of Illinois Country Living magazine and at www.cornbeltenergy.com.

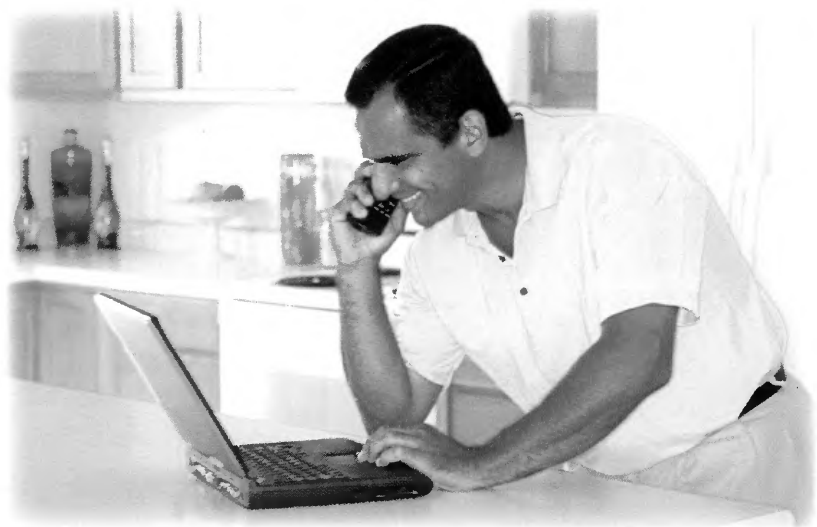
Online Billing

You don't have to wait for the mail to arrive to view your Corn Belt Energy bill. Sign up for E-billing at our Web site, and you'll see your charges as soon as they're calculated.

Every month, we'll send you an e-mail directing you to your current online bill. You'll be able to review your current bill along with historical billing and payment information. If you like, you can pay online using your credit card, debit card, or check.

Hundreds of members are choosing E-billing because they like the quick notification and convenience of paying online. And best of all, this is a free service to our members!

To sign-up for E-billing, go to our Web site at www.cornbeltenergy.com. Then select "Direct Link For Electronic Billing." Click on



"yes" and enter your e-mail address and password. That's all there is to it!

You can turn off the printed statement when you view your bill online. Just go to the bottom of the page where your bill is displayed, and select "Turn On/Off Printed Statement." If

you do so, make sure to update your e-mail address in our E-billing system, if you change your Internet provider.

While you're at our Web site, please check out the other information and services that Corn Belt Energy has available to members.

Are Spam Blockers Rejecting Your E-bill?

It has come to our attention that some members are not receiving their E-bills due to spam blocking programs at

their work or homes. If you have requested that our statements no longer be mailed to you, you may not be aware

of charges owing on your account.

In order to receive our E-bill messages on your home computer, you may need to lower the security level or contact your Internet provider to allow messages from Corn Belt Energy. If you have provided your work e-mail address and are not receiving our messages, you may need to change your email address at our Web site. Just go to www.cornbeltenergy.com and click on E-billing. Once you get into your account click on "Change My E-mail" on the left side of the page.

Spam blockers are a great way to eliminate unwanted e-mail, but make sure you are receiving the messages you want. For additional information, call us at (800) 879-0339.



CORN BELT ENERGY CORPORATION, BLOOMINGTON, ILLINOIS

MARCH 2005

A Touchstone Energy® Cooperative 

E.O.E. (M/F/H)

How Old Are Your Heating and Cooling Systems?

If your heating or cooling systems are more than 20 years old, you should consider replacing them with an energy efficient geothermal system. Geothermal systems, on average, can cut energy expenses by 50 percent, and have been proven to decrease maintenance costs as well. Know the facts about geothermal heating and cooling before you buy.

■ **Installation** - Installation is not limited to new construction.

■ **Low electric rate** - Corn Belt Energy offers a winter rate of 3.955 cents per kwh for geothermal systems.

■ **Cost of geothermal** - a geothermal unit and installation is approximately twice that of other conventional heating/cooling/water heating systems, but the average payback is within 6-8 years.

■ **Higher construction cost** - Although you may have to borrow more for new construction, the reduction in monthly energy bills more than offsets the slightly higher mortgage payment.

■ **Energy efficiency**

The unit is 3-4 times more efficient than other furnaces, and approximately 35 percent of the water heating is virtually free. According to the U.S. Environmental Protection Agency, Geothermal systems save homeowners 60 percent in heating costs and 50 percent in cooling costs, compared to conventional systems.

When temperatures drop below 10 F, it's most efficient to have back-up heat. New geothermal installations have a built-in electric element that backs up the system when temperatures are severe. For people who are replacing their air conditioner but have furnaces less than 5 years old, their existing furnace and blower can act as a backup.

■ **Reliability** - Geothermal units are highly reliable, require little maintenance, and are built to last for decades.

■ **Added Value** - They add considerably to the value of homes.

Today, the major barrier to wider use of this marvelous technology is the fact that many consumers simply aren't aware it's there.



To find out more

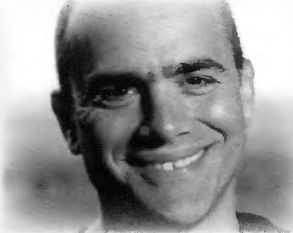
Geothermal is a smart investment for consumers who want a system that provides a high level of comfort and low monthly energy bills for as long as they own their homes.

The most valuable information sources are professionals with Geothermal experience. Contact Corn Belt Energy for information about area dealers who install these units. Call (800) 879-0339, ext. 222 or 228.

Please plan to attend the
67th ANNUAL MEETING OF MEMBERS

Saturday, March 12, 2005

to be held at Normal Community High School
 in Normal, Illinois



**8:00 a.m. –
 10:00 a.m.**

Registration – Coffee, milk, and donuts served. Energy, safety, and health displays will be open.

**New this
 year!**

Two children's programs will coincide with the annual meeting of members. One will be for 3 and 4 year olds, and the second program will be for kindergarten through 5th grade students. Registration will begin at 9:30 a.m.

**10:00 a.m. –
 Noon**

Annual Meeting of Members – Reports from the Chairman and Treasurer of the Board of Directors, and the President of CBEC. Election of board members. Entertainment and drawings for prizes during the meeting.

Noon

Everyone is invited to stay for lunch in the cafeteria.

Please return the reservation form before March 10, 2005,
 or reply via e-mail to cbec@cornbeltenergy.com.

RESERVATION FORM

67th ANNUAL MEETING OF MEMBERS

There is no charge for the meal or kids' programs. Please return the completed form to P.O. Box 816, Bloomington, IL 61702-0816 before March 10th or reply via e-mail to cbec@cornbeltenergy.com or by phone at 1-800-879-0339.

Number for lunch _____

Number for kids' programs 3-4 yr. old _____ 5-11 yr. old _____

Member's Name (please print) _____

Address _____

CBEC Acct. Number _____ Phone Number (_____) _____

We look forward to seeing you March 12!

CORN BELT ENERGY CORPORATION, BLOOMINGTON, ILLINOIS

Education Grant Deadline Near

March 31, 2005, is the deadline to apply for a \$1,000 education grant to be used for programs at four schools where sons and daughters of Corn Belt Energy members attend.

Encourage your school's teachers or administrators to apply online at www.cornbeltenergy.com. The grant is available for preschool, elementary, or secondary level programs. It's

easy to apply – just give specific details about a program needed in the district.

An independent panel of judges will evaluate the applications. After careful consideration, four schools will be notified that they are the winners! For additional information, please visit our Web site or call (800) 879-0339, ext. 250.

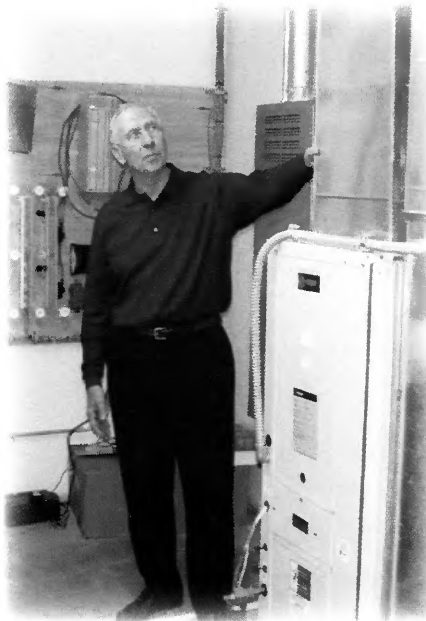
Area Church Receives Geothermal Grant

The West Twin Grove Christian Church in Bloomington was recently awarded a \$15,250 grant toward the completion of a geothermal heating and cooling system in its new addition. The grant was funded by the Illinois Clean Energy Community Foundation, and administered by the Association of Illinois Electric Cooperatives (AIEC).

According to Jerry Durlinger, Corn Belt's geothermal specialist, "Geothermal heat pumps use the earth's energy and are the most energy efficient heating and cooling systems available.

"Geothermal takes less energy. The unit moves the air slowly so that it stays on longer, but the temperature from floor to ceiling stays about the same. And only the furnace fan is used to push the air along. For every dollar you spend on geothermal, you get \$3 to \$4 in return."

A representative from WaterFurnace International will be available to answer questions about geothermal heating and cooling at this year's Annual Meeting of Members. Stop by and learn why 932 Corn Belt Energy members are currently using geothermal systems in their homes and businesses.



HOME SHOW

2005

BUILDING YOUR FUTURE TODAY

The Bloomington-Normal Area Home Builders Association and The Pantagraph

Buy one, get one FREE

March 11, 12, 13, 2005

The Interstate Center

2301 W Market, Bloomington

Friday, March 11

5:00 p.m. – 9:00 p.m.

Saturday, March 12

9:00 a.m. – 7:00 p.m.

Sunday, March 13

10:00 a.m. – 4:00 p.m.

Stop by the CBEC
booth #2201

Stop by and see us at the Home Show 2005 on March 11, 12, 13, 2005. Clip and use the "buy one, get one free" coupon or attend this year's Annual Meeting of Members and receive two free Home Show tickets per membership!

Natural Gas Update

Complete details about the 2005 natural gas offer will be available at the Annual Meeting. If you have Nicor natural gas and you haven't made the change to Corn Belt Energy, after March 1, 2005, you can view our offer online at www.cornbeltenergy.com or call (866) 806-3411.

**You'll like our simple offer.
Let your cooperative be your
total energy provider!**

CORN BELT ENERGY CORPORATION, BLOOMINGTON, ILLINOIS

OFFICE CLOSING



Corn Belt Energy offices will be closed Friday, March 25, 2005, to observe Good Friday. In the event of an electrical emergency, please call (800) 879-0339.

TO REPORT AN OUTAGE

NORTHERN REGION
DAY OR NIGHT
Phone (800) 654-1088

CENTRAL REGION
DAY OR NIGHT
Phone (800) 879-0339

OUTAGE REPORT

The following outages affected more than 100 members. From November 24-27, widespread outages occurred throughout Corn Belt Energy's Central Region due to ice on lines, which caused broken poles, down wires, AmerenIP transmission problems, and trees in lines. Due to space limitations, these outages are not listed below. Please see our Web site at www.cornbeltenergy.com for a complete list of substation and feeder outages.

DATE	TIME	MEMBERS	AREAS AFFECTED	REASON FOR OUTAGE
08/17/04	5:10 p.m. - 6:48 p.m.	190	Norway area	Car accident caused broken pole
08/25/04	5:42 p.m. - 7:10 p.m.	178	Goodfield & Congerville areas	Lightning caused open fuse
08/26/04	4:15 a.m. - 6:14 a.m.	317	Wedron area	Wire down
09/01/04	1:15 p.m. - 1:16 p.m.	1605	Parkside area (Normal)	Blink on AmerenIP transmission
09/08/04	11:40 a.m. - 2:09 p.m.	387	South Bloomington area	Wire down
09/13/04	2:27 p.m. - 3:10 p.m.	1315	Annawan, Neponset, Mineral, Ladd, Buda, Wyanet, Sheffield, Manlius, Tiskilwa & Princeton areas	AmerenIP transmission problems
09/15/04	7:22 a.m. - 8:45 a.m.	278	Ladd area	Transformer blew into transmission line
09/15/04	7:20 a.m. - 8:45 a.m.	278	Ladd area	AmerenIP had debris in transmission line
09/15/04	8:55 p.m. - 12:12 a.m.	230	South Bloomington area	Line out from burnt jumper
09/23/04	10:00 a.m. - 11:00 a.m.	120	Goodfield area	Construction crew caught overhead line
09/26/04	12:45 p.m. - 2:30 p.m.	152	Hopedale area	Car accident caused broken pole
10/01/04	9:07 p.m. - 10:00 p.m.	188	Bloomington area	Unknown
10/11/04	10:40 p.m. - 2:51 a.m.	143	Hedgewood Subdivision in Bloomington	Faulty underground primary
10/23/04	2:50 p.m. - 4:10 p.m.	438	Danvers & Bloomington areas	Wire down
10/26/04	9:00 a.m. - 9:25 a.m.	842	Holder & Bloomington areas	Bird caused arrester to blow
10/26/04	4:40 p.m. - 7:10 p.m.	141	Danvers & Bloomington areas	Vehicle accident
10/30/04	1:55 a.m. - 8:41 a.m.	269	Wapella, Clinton & Maroa areas	Tree fell into AmerenIP transmission line
11/01/04	6:30 a.m. - 8:25 a.m.	120	Norway area	Wind blew tree limb into power line
11/17/05	8:30 p.m. - 9:30 p.m.	387	Troy Grove area	Blown arrester on AmerenIP transmission line
11/20/05	3:30 a.m. - 9:00 a.m.	582	East Bloomington area	Elbow burning in junction cabinet
11/21/05	10:30 p.m. - 1:30 a.m.	279	Ladd substation area	AmerenIP transmission problems
11/22/05	8:10 a.m. - 9:15 a.m.	429	East Bloomington area	Broken fuse
12/06/05	9:50 a.m. - 10:30 a.m.	663	East Bloomington	CBEC truck caught in overhead
12/13/05	6:15 a.m. - 9:30 a.m.	202	Kappa, El Paso & Secor areas	Strong winds caused wire down
12/13/05	4:00 p.m. - 4:30 p.m.	381	Princeton substation area	High side fuse blown
12/15/05	1:30 p.m. - 2:30 p.m.	215	Maroa area	Weather caused wire down
12/19/05	6:00 p.m. - 9:00 p.m.	1918	South & west Bloomington areas	AmerenIP transmission problems
12/19/05	6:00 p.m. - 9:00 p.m.	2183	South & East Bloomington & Downs areas	AmerenIP transmission problems

CORN BELT ENERGY CORPORATION, BLOOMINGTON, ILLINOIS

APRIL 2005

A Touchstone Energy® Cooperative 

E.O.E. (M/F/H)

CBEC Announces \$4,000,000 Capital Credit Refund

At the cooperative's Annual Meeting of Members held Saturday, March 12, 2005, it was announced that the cooperative will be refunding approximately \$4,000,000 to its members in 2005. Refund checks will be mailed sometime in May.

At the December board meeting, the board of directors determined that approximately 60 percent will be distributed based on members' electric usage during 2004. The remaining \$1.6 million will be distributed based on usage in prior years. At the time of this writing, Corn Belt Energy plans to refund capital credits to the northern region (formerly Illinois Valley Electric Cooperative) for service from 1947-1957. In the Central Region (formerly Corn Belt Electric Cooperative), capital credits will be refunded for 1954 through part of 1963.

■ What are capital credits?

Corn Belt Energy Corporation is operated on a not-for-profit basis. Energy cooperatives, unlike investor-owned utilities, are owned by the members they serve. When you pay your energy bill, you are accumulating equity in your cooperative. It's similar to building equity in your home as funds are applied toward the principle.

Margins in excess of the cost to serve members are used as operating capital. When the cooperative realizes a positive margin (excess of income over expenses), the margins are allocated through a capital credits system according to your usage. This is called capital credit allocation.

Corn Belt Energy assigns an individual capital credit account for each member that's separate from the billing account. Whenever funds are allocated to your capital credit account, your equity in the cooperative increases.

Corn Belt Energy purchases electricity from Wabash Valley Power Association (WVPA), which is also a cooperative. There-

fore, you are accumulating capital credits with WVPA for the portion of your usage that relates to generation and transmission. Those funds will be refunded at the discretion of Wabash Valley Power's Board of Directors.

■ What's the difference between allocating and refunding capital credits?

The board of directors determines when capital credits may be refunded to members for previous years of patronage. Capital credits are refunded as the financial condition of the cooperative permits.

■ Will capital credits be refunded for natural gas accounts?

No. The cooperative did not experience positive margins for natural gas during 2004.

■ Are capital credits taxable?

Under the current laws, no part of **allocated** capital credits are taxable. However, if electricity was included as a business deduction, check with your accountant to find out if **refunded** capital credits may be taxable.

■ Keep your address current.

If you cease to purchase energy from Corn Belt Energy, please keep us informed of your address. This will enable us to forward payment when capital credits are refunded for past years earnings.

In the event a member died after January 1, 1997, the original member's estate can receive an annual check or cash out the capital credits at a discounted retirement amount.

For additional information about capital credits, visit our Web site at www.cornbeltenergy.com or call (800) 879-0339.

Green Power Offers Environmental Opportunity

Have you wondered what you can do to make an environmental difference? Corn Belt Energy offers "green power" as an option for those electric consumers who want to make a difference by cleaning up the environment.

Green power is electricity that is generated from the wind, sun, and biomass. Corn Belt Energy is purchasing its green power from a supplier that operates landfill-power generators in Indiana. These landfills produce methane, which is used as fuel for generating electricity. This reduces our need to use more nonrenewable fossil fuels.

"Besides supplying green power to consumers who opt for it, the program is going to raise money to fund environmental projects in the Corn Belt Energy service area," said President/CEO Jeff Reeves. "It's a two-fold approach to bettering our environment."

Members participating in the green power program will pay one-half cent per kilowatt-hour more for the kilowatt-hours used each month. For the average residential member, that would

be approximately \$46 per year. That money will be placed in the green power fund, which will be administered by the board of directors. It will fund local environmental projects such as the proposed wind generator at the Illinois State University farm.

The green power program is a tangible way to make a difference in response to members' concerns about the environment. Corn Belt Energy members can sign up for green power by e-mailing collins@cornbeltenergy.com or by calling (800) 879-0339.

Robert Whitwood, Jr., CBEC Director from Hudson, was not pictured in the 2005 annual report. Mr. Whitwood was elected to the board in 2004 to represent District 1. We apologize for this error.



A GEOTHERMAL OPEN HOUSE

SATURDAY, APRIL 9TH, 2005, 10:00 A.M. TO 2:00 P.M.

This is your opportunity to discover just how much more disposable income you can have when you invest in a geothermal system for your home or business. A typical geothermal system is 400 percent efficient, delivering four times more energy than it consumes. Corn Belt Energy's geothermal owners heat for about 75 percent less than they could have with propane and about half the cost of natural gas. The savings continue through the summer for these members as they cool their homes for about 1/2 the cost of a standard air conditioner and heat all the domestic hot water for free.

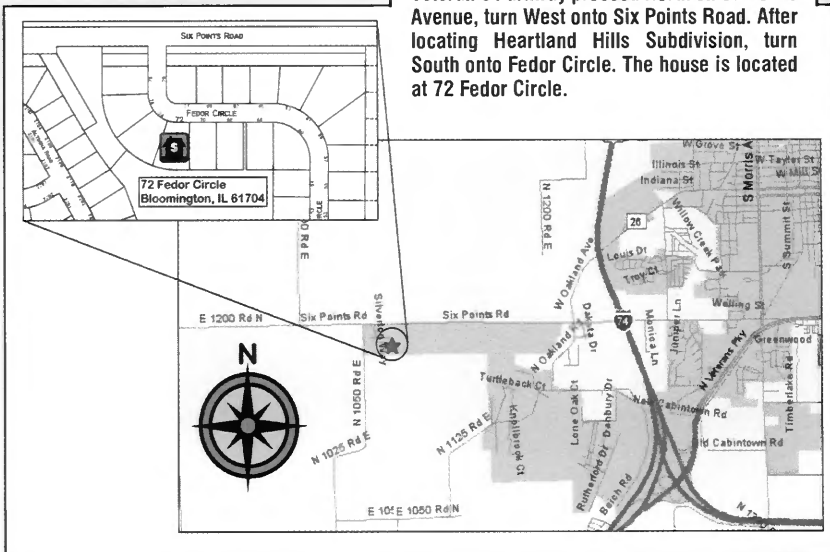
Directions: Heartland Hills Subdivision is located on the West side of Bloomington. From Veteran's Parkway proceed North on S. Morris Avenue, turn West onto Six Points Road. After locating Heartland Hills Subdivision, turn South onto Fedor Circle. The house is located at 72 Fedor Circle.

Bratcher
 Heating • A/C • Refrigeration
 Normal (309) 454-1611

CORN BELT ENERGY

A Touchstone Energy[®] Cooperative

GeoComfort
 Geothermal Heating • Cooling • Hot Water



CORN BELT ENERGY CORPORATION, BLOOMINGTON, ILLINOIS

Vehicle Accidents Involving Downed Power Lines

If your car hits a power pole, or otherwise brings a power line down, Safe Electricity urges you to stay inside the vehicle until help arrives. Getting out of the vehicle, with few exceptions, is the wrong thing to do until the line has been de-energized.

"You are almost always better off to stay in the car, especially if the line is in contact with the vehicle," says Molly Hall, Executive Director of the Safe Electricity program. "If the power line is still energized and you step outside, your body becomes the path for that electricity and electrocution is the tragic result."

"It's best to wait until the electric utility crew arrives to make sure power to the line is cut off," says Hall.

The only exception would be if fire or other danger, like the smell of gasoline, is present. In that case, the proper action is to jump – not step – with both feet hitting the ground at the same time. Jump clear, without touching the vehicle and ground at the same time. Shuffle or hop to safety keeping both feet together as you leave the area. Like the ripples in a pond or lake, the voltage diminishes the farther out it is from the source. Stepping from one voltage level to another allows the body to become a path for that electricity.

"Even if a power line has landed on the ground, there is still the potential for the area near your car to be energized," Hall says. "Stay inside the vehicle unless there's fire or imminent risk of fire."

The same rules apply to situations involving large farm and construction equipment that comes in contact with overhead lines.

"Those working with large equipment should stay inside the cab or remain on the vehicle if equipment extensions come in contact with power lines.

"Warn others who may be nearby to stay away and wait until the electric utility arrives to make sure power to the line is cut off," Hall adds.

While driving, if you encounter a down wire on the road, always assume it is an electrical wire and energized, and stay in your car. If you come upon, or witness an accident involving toppled power poles and lines, don't leave your vehicle to approach the accident scene.

"Often our inclination is to step in and help those in danger and offer assistance to the injured. But, in accidents involving power poles," says Hall, "Call for help. Wait for trained assistance to arrive, or you could become an additional victim in need of rescue."

Accidents and fires involving electricity cause more than a thousand deaths and tens of thousands of injuries each year. The vast majority are preventable if people understand the dangers and steps they can take to be safe around electricity.

Prevention of electricity-related tragedies is the goal of Safe Electricity, an industry-wide program of electric utilities and educators aimed at expanding public awareness of electrical hazards and proper actions to take around them.

The program uses a variety of ways to bring safety messages to consumers and expand awareness, including radio and television public service announcements (PSAs) and a comprehensive Web site, www.SafeElectricity.org.

"We encourage everyone to heed the information they hear in the PSAs and to visit the Web site to learn more," Hall says. "Taking a few minutes to learn how to be safe could be a life-saving investment of time."

NATURAL GAS OFFER NOW AVAILABLE

Complete details about Corn Belt Energy's 2005 natural gas offer are available online at www.cornbeltenergy.com or by calling (866) 806-3411. If Nicor is your natural gas utility and you haven't made the change to Corn Belt Energy, check out our new offer. You can receive a credit on your electric bill by choosing Corn Belt Energy for your natural gas supplier. Sign up online and receive an additional bonus.

Let your cooperative be your total energy provider!

Annual Spring Tree Sale

The McLean County Soil & Water Conservation District's (SWCD) Annual Spring Tree sale is in progress and will continue through April 15, 2005. A large variety of evergreens, hardwoods, and shrubs will be offered. Trees can be purchased bare root in bundles of 25 or potted varieties can be purchased individually. For additional information, contact the SWCD office at (309) 452-0830, extension 3.



CORN BELT ENERGY CORPORATION, BLOOMINGTON, ILLINOIS

OUTAGE REPORT

The following outages affected more than 100 members. Please see our Web site at www.cornbeltenergy.com for a complete list of substation and feeder outages.

DATE	TIME	MEMBERS	AREAS AFFECTED	REASON FOUND
01/01/05	1:43 p.m. - 4:11 p.m.	113	Grandville area	Wire down
01/01/05	6:40 p.m. - 8:49 p.m.	385	Troy Grove area	AmerenIP lost transmission
01/03/05	10:14 a.m. - 11:10 a.m.	108	Deer Creek and Goodfield areas	Faulty OCR caused line outage
01/05/05	12:15 p.m. - 2:40 p.m.	181	Carlock area	Wires down from ice storm
01/05/05	3:49 a.m. - 6:45 a.m.	1073	Dahinda and Oak Run areas	Oak Run sub. out due to AmerenIP ice storm problems
01/05/05	3:49 a.m. - 6:45 a.m.	356	Altona area	Altona sub. out due to AmerenIP ice storm problems
01/05/05	3:49 a.m. - 6:45 a.m.	288	Cambridge and Kewanee areas	Burns sub. out due to AmerenIP ice storm problems
01/05/05	4:00 p.m. - 10:00 p.m.	257	South & East Bloomington and Downs areas	Line out of Gillum sub out due to ice
01/05/05	8:00 p.m. - 10:00 p.m.	1277	South & East Bloomington and Downs areas	Taken offline to remove ice from lines
01/06/05	6:06 a.m. - 6:40 a.m.	1014	El Paso, Kappa and Secor areas	AmerenIP lost transmission
01/06/05	7:37 a.m. - 9:15 a.m.	388	Maroa area	AmerenIP lost transmission
01/06/05	7:37 a.m. - 9:15 a.m.	571	Wapella and Clinton areas	AmerenIP lost transmission
01/06/05	10:10 a.m. - 3:55 p.m.	164	LeRoy area	Fuse out from ice and snow
01/06/05	10:20 a.m. - 12:00 p.m.	196	Grandville area	Line fuse out from ice and snow
01/09/05	11:36 a.m. - 1:30 p.m.	542	Holder, Downs and east Bloomington areas	Melting ice on lines caused lines to touch
01/09/05	1:50 p.m. - 4:50 p.m.	716	LeRoy area	AmerenIP lost transmission
01/09/05	2:24 p.m. - 4:45 p.m.	120	Clinton and Wapella areas	Melting ice on lines caused lines to touch
01/09/05	3:00 p.m. - 3:22 p.m.	127	Arrowsmith area	Melting ice on lines caused lines to touch
01/09/05	5:00 p.m. - 11:55 p.m.	125	Dewitt area	Ice and tree in line
01/18/05	1:00 a.m. - 4:25 a.m.	173	Maroa area	Wires down

CALL J.U.L.I.E. Before You Dig... (800) 892-0123

Digging into a buried line can be extremely dangerous, costly, and inconvenient. Whether you're digging a posthole or planting a tree, you should take precautions to avoid digging into an underground utility line. Call Joint Utility Locating Information for Excavators (J.U.L.I.E.) at least two business days before you begin. A J.U.L.I.E. operator will take your name and location and alert every participating utility that has underground lines in your area. Each utility will come to your digging site and place color-coded markers to indicate buried lines. **Note:** J.U.L.I.E. will not locate underground wiring that is beyond our meter. To have this done, phone the largest electric contractor in the city nearest you.

Please plan ahead and call J.U.L.I.E. at (800) 892-0123 at least two business days before you dig.



Spring
FORWARD,
FALL BACK

Remember, Day-
Right Saving
Time begins April 3.
Set your clock one
hour ahead.

CORN BELT ENERGY CORPORATION, BLOOMINGTON, ILLINOIS

MAY 2005

A Touchstone Energy® Cooperative 

E.O.E. (M/F/H)

Annual Meeting Highlights



Pictured (back row l-r) are President/CEO Jeff Reeves and re-elected board members Jerry Starkey of Le Roy, Albert Hagenbuch of Utica, Dennis Fredrickson of Victoria, (front row) Rae F. Payne of Bloomington and Michael Killian of Lexington. All were elected to serve three-year terms.

More than 460 people attended Corn Belt Energy's Annual Meeting of Members on March 12, 2005. Here are some of the highlights of the event:

- President/CEO Jeff Reeves announced the retirement of \$4 million in capital credits for electric accounts billed in 2004.
- Rates will remain the same for all members in 2005 and the foreseeable future, barring any major storms or unknown factors that would impact the financial integrity of the cooperative.
- The following board members were re-elected for another three years: Michael Killian of Lexington, Rae F. Payne of Bloomington, Jerry Starkey of Le Roy, Dennis Fredrickson of Victoria and Albert Hagenbuch of Utica.
- Corn Belt Energy's computer system was recently updated. The new system links all departments and creates a better flow of information.
- The board recently approved the installation of Automatic Meter Reading (AMR), which will allow meters to be read using power lines. The board sees this use of technology as a way to provide better service to our members.

(continued on page 16b)



- This year, for the first time, children's programs were available during the Annual Meeting. Children from age three through 11 were entertained and educated by volunteers from the Children's Discovery Museum, the Normal Fire Department, the Normal Police Department, Corn Belt Energy linemen and a face painter.



- Representatives from several companies were on-hand to distribute information related to health, safety and energy.
- Michael Perry, an author and humorist, shared unique tales about his life experiences in rural Wisconsin.
- Rae F. Payne was re-appointed as Board Chairman, Steve Schertz was re-appointed Vice Chairman, Albert Hagenbuch was re-appointed Secretary-Treasurer and Janice Reimer was appointed Assistant Secretary-Treasurer.
- Dinner was served by IBEW employees and staff, who were able to meet and greet the members they serve.



Corn Belt Energy's Annual Meeting is the most important event your cooperative holds each year. It is a time for members to be updated on the cooperative's operations and to interact with employees, directors and other members.

Buggar Bids Farewell to CBEC

After more than 35 years of service, Jim Buggar retired from Corn Belt Energy on April 8, 2005. He began his career with the cooperative on July 16, 1970, as an Apprentice Groundman. Through the years, he worked in various positions in Construction and Maintenance and was promoted to his last position as Construction Foreman in 1999.

On behalf of the management of Corn Belt Energy, we want to extend our thanks to Jim for all his years of dedicated service and wish him well in his retirement.



CORN BELT ENERGY CORPORATION, BLOOMINGTON, ILLINOIS

**Sometimes it's hard
to make a choice.**



**So how do you
choose a natural
gas supplier?**

If Nicor is your utility, Corn Belt Energy can supply your natural gas. For additional information and incentives, go to www.cornbeltenergy.com or call (866) 806-3411.

We'll make it easier to choose a natural gas supplier than to select a favorite flavor of ice cream!



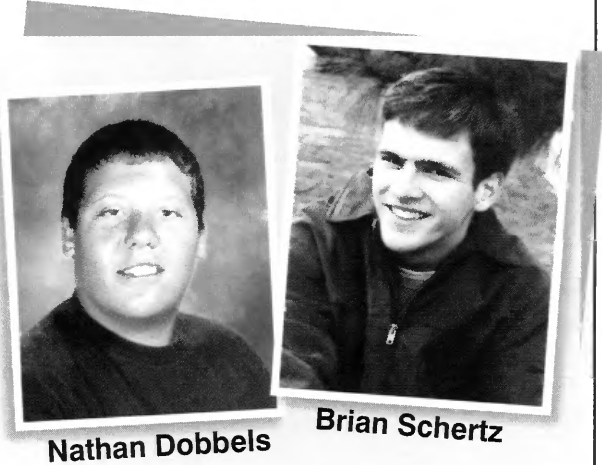
A Touchstone Energy® Cooperative 

Winners of Youth to Washington Contest Announced

Congratulations to Nathan Dobbels and Brian Schertz, winners of our 46th Annual Youth to Washington Contest!

Nathan, the son of Lanny and Diane Dobbels, is a sophomore at Galva High School. Brian is the son of Scott and Kim Schertz of rural Hudson. He is a senior at Normal Community West High School. Both students will take a weeklong tour of Washington D.C. in June 2005, along with other Illinois cooperative winners.

In addition, they are invited to attend Youth Day in Springfield on April 13, 2005, where they will meet with their State Representatives and tour the State Capitol, monuments and memorials. Both events are intended to give students opportunities to learn more about cooperatives and how the government process works.



Nathan Dobbels

Brian Schertz

Congratulations to Nathan and Brian!

CORN BELT ENERGY CORPORATION, BLOOMINGTON, ILLINOIS

Members Unite To Make A Difference

Did you ever wonder what you could do to clean up the environment? None of us alone can accomplish such an overwhelming task, but together, we can make a difference.

Corn Belt Energy members who have selected our green power rate are helping to fund environmental projects for approximately \$4.00 per month. For additional information, go to www.cornbeltenergy.com or call (800) 879-0339.

OFFICE CLOSING

Corn Belt Energy's Offices will be closed on Monday, May 30 for the Memorial Day Holiday. In case of an electrical emergency call (800) 879-0339.

Spring Winds Whisk in Kite-flying Season

Before you send your kites soaring, review and practice these rules for safe, fun-filled flying:

- Fly kites in large open areas like a park or a field, safely away from trees, overhead power lines and other electrical equipment.
- Never fly kites in storms or with wet lines.
- Never use metallic flying line.
- If a kite gets stuck in a tree that's near power lines, don't climb up to get it. Contact your electric utility for assistance.
- Never go into an electric substation for any reason. Electric substations contain high-voltage equipment, which can kill you. Never retrieve a kite or ball that lands inside a substation fence. Contact your electric provider instead.

Source: www.safeelectricity.org



Mother's Day

Remember to make Mother's Day special for Mom on Sunday, May 8. The best gifts you can give her are your love, your time, and your respect. She needs to hear that you're glad she's your Mom.

CORN BELT ENERGY CORPORATION, BLOOMINGTON, ILLINOIS

JUNE 2005

A Touchstone Energy® Cooperative 

E.O.E. (M/F/H)

The Check Is In The Mail

You say, "Sure, I've heard that one before!" Well, believe it or not, if you had electric service with Corn Belt Energy in 2004, we'll be mailing you a refund check around the middle of June.

In addition, members who had service with Illinois Valley Electric Cooperative from 1947-1957 or with Corn Belt Electric Cooperative from 1954 through part of 1963 will also receive refund checks!

Corn Belt Energy will be refunding a total of approximately \$4 million. Approximately 60 percent of the total refund will be distributed according to the amount that members paid for electric service in 2004. The other 40 percent will be refunded for the earlier years listed above.

■ Wondering why Corn Belt Energy is sending you a refund?

It's because we are a not-for-profit cooperative, owned by the members we serve. When you pay your energy bill, you are accumulating equity in your cooperative. Margins in excess of the cost to serve members are used as

operating capital. When the cooperative realizes a positive margin (excess of income over expenses), the margins are allocated through a capital credits system according to your usage. Each member has a capital credit account that is separate from the billing account. Funds are refunded to members at the discretion of the Board of Directors according to the financial condition of the cooperative.

■ Keep your mailing address current with Corn Belt Energy, even if you move away from our service territory!

This will enable us to forward payment when capital credits are refunded for past years earnings.

In the event a member died after January 1, 1997, the original member's estate can receive an annual check or cash out the capital credits at a discounted retirement amount.

For additional information about capital credits, visit our Web site at www.cornbeltenergy.com or call (800) 879-0339.

Don't forget Father's Day is Sunday, June 19

When I was:

- Four years old: "My daddy can do anything."
- Five years old: "My daddy knows a whole lot."
- Six years old: "My dad is smarter than your dad."
- Eight years old: "My dad doesn't know exactly everything."
- Ten years old: "In the olden days, when my dad grew up, things were sure different."
- Twelve years old: "Dad doesn't know anything about that. He is too old to remember his childhood."
- Fourteen years old: "Don't pay any attention to my dad. He is so old-fashioned."
- Twenty-one years old: "Him? He's hopelessly out of date."
- Twenty-five years old: "Dad knows about it, but then he should, because he has been around so long."
- Thirty years old: "Maybe we

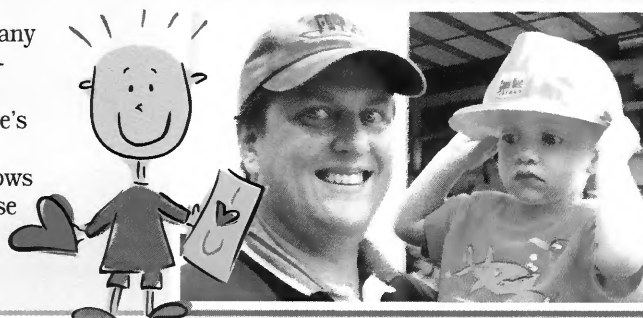
should ask Dad what he thinks. After all, he's had a lot of experience."

■ Thirty-five years old: "I'm not doing a single thing until I talk to Dad."

■ Forty years old: "I wonder how Dad would have handled it. He was so wise."

■ Fifty years old: "I'd give anything if Dad were here now so I could talk this over with him. Too bad I didn't appreciate how smart he was. I could have learned a lot from him."

Writer Unknown



Avoid Tree and Utility Conflict

Before deciding what type of tree to plant and where the tree will be planted, look up and look down. This is the advice given by the International Society of Arboriculture (ISA). Proper tree and site selection will provide trouble-free beauty and pleasure for years to come.

One of the most important things to consider is the location of utility lines. "Trees that are small now can create significant problems in the future as they grow into maturity and into power lines," says Derek Vannice, Executive Director, Utility Arborist Association (UAA). The location of utility lines should have a direct impact on tree and site selection. Both overhead lines and underground lines need to be considered.



Look up-Overhead Lines

Overhead lines for utilities such as electric, telephone, or cable television are the easiest to see but are the most taken for granted. These lines may appear harmless, but can be extremely dangerous. Children or adults climbing in trees that are too tall and growing into the utility lines can be severely injured or possibly killed, if they accidentally come in contact with the wires.

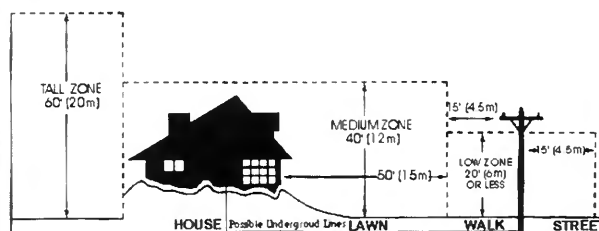
If tall growing trees are planted under utility lines, then they require pruning to maintain clearance, because lines making contact with the wires can result in service interruptions. Utility pruning can result in the tree having an unnatural appearance. According to Vannice, "Planting a tall growing tree under a power line will not allow the tree to realize its proper size and form." Proper selection and placement of trees around overhead utilities can help eliminate power outages, which reduces expenses for utilities and rate payers. Correct selection will also eliminate potential public safety hazards, and improve the appearance of landscapes.

Look down-Underground Lines

Potential problems that are much harder to recognize are those involving underground utilities such as water, sewer, and natural gas. Trees are much more than just what you can see. The root area of a tree is usually larger than the branch spread above ground. Tree roots and underground lines usually co-exist without problems. However, if a tree is planted near one of these utility lines that

need to be dug up for repairs, the result could be damage to the root system of the tree.

The most important thing to remember is to determine the location of utility lines before planting. Often these lines are closer to the surface than we think, so verify the location of the lines with the utility company before digging the hole. Accidentally digging into a line can cause serious personal injury as well as costly interruption of utility service.



Planting Trees Around Homes

The illustration above indicates approximately where trees should be planted in relation to utility lines.

■ **Tall Zone (Trees that grow 60 feet or more in height)**
– Plant large trees at least 35 feet away from the house for proper root development and to minimize damage to the house or building. Planting sites must be greater than 8 feet, which will allow for a large root system, trunk diameter and root flare.

■ **Medium Zone (Trees that grow no taller than 40 feet)**
– These trees are used to decorate or frame your house or provide a park-like setting. Medium-sized trees are recommended for planting anywhere the above and below ground growing space will allow for reaching a mature height of 30 to 40 feet. Appropriate soil spaces are four to eight feet wide.

■ **Low Zone (Trees that grow no taller than 20 feet)**
– Plant low zone trees in an area extending at least 15 feet on either side of the utility wires. These trees are appropriate for narrow planting areas less than four feet wide.

Right Tree-Right Place

Planning before planting can help ensure that the right tree is planted in the right place. Proper tree selection and placement enhances your property value, prevents costly and sometimes unsightly maintenance trimming, and lowers the risk of damage to your home and property.

The International Society of Arboriculture (ISA), a nonprofit organization supporting tree care research around the world, offers the only internationally recognized certification program in the industry. Corn Belt Energy is proud to have two employees, who have become ISA Certified. They are Frank Kinnison, an ISA Certified Arborist and Cal Williams, an ISA Certified Arborist/Utility Specialist. If you need help selecting the proper tree, consult a nursery or call Cal Williams, Corn Belt Energy's Manager of Vegetation and Safety.

For additional information, check out the following Web sites: www.treesaregood.com, www.utilityarborist.org and www.isa-arbor.com.

CORN BELT ENERGY CORPORATION, BLOOMINGTON, ILLINOIS



Youth Day Held In Springfield

Senator Dale Risinger and Representatives Donald Moffitt and Keith Sommer met with two students representing Corn Belt Energy during the Illinois Electric and Telephone Cooperatives' Youth Day on Wednesday, April 13, in Springfield. While in the state capital, Nathan Dobbels and Brian Schertz, winners of Corn Belt Energy's Youth to Washington contest, had an opportunity to view state government in action, speak with Secretary of State Jesse White, and tour the State Capitol, Lincoln's Tomb, and the Illinois Supreme Court.

From left are Representative Moffitt of Galesburg, Nathan Dobbels of Galva, Representative Sommer of Morton, Brian Schertz of Hudson, and Senator Risinger of Peoria. The day was sponsored by the Illinois electric and telephone cooperatives and was designed to introduce young rural leaders to state government.

Are You Confused By Natural Gas Offers?

Have you been overwhelmed lately by natural gas telemarketers? Are you confused about what questions to ask or how to choose a supplier? Did you know that if Nicor is your gas utility, you can choose Corn Belt Energy for your provider?

Whether or not you choose your cooperative to supply your natural gas, we want to protect you from being deceived by fast-talking marketers. Here are some tips to assist you in your search for a supplier:

- You don't have to switch to any supplier, if you don't want to.
- You have the right to review their complete terms and conditions, before you enroll by phone, online, or by mail.
- Don't give out your Nicor account number and meter number until you agree to switch. That information will allow a marketer to switch your Nicor account.
- Know all the facts about what charges are included in a supplier's price per therm. How do they bill, and are there additional monthly service fees that increase the actual therm price?
- If they quote a fixed price, is that a minimum or maximum fixed price? Do their terms clearly state that the price will not go up? Be aware that most fixed therm prices are much higher than variable market

prices during the majority of the year.

- Be careful about long-term contracts. Historically, what appears to be a good price this year may not be a competitive price in a couple years.
 - If the offer is complicated and confusing, don't sign up!
 - If it sounds too good to be true, it probably is! Choose a company you can trust.
 - Ask how long they've been in business and where they're located. Does the person handling calls work for the supplier or an outsourced call center?
 - Watch for contract language that allows the marketer to sell your information and your supply account.
 - Know who you're dealing with. Some company names can be deceiving.
 - Check with the Illinois Commerce Commission (ICC) and the Citizen's Utility Board (CUB) about the status of consumer complaints on various marketers.
- Complete details about Corn Belt Energy's natural gas offer are available at www.cornbeltenergy.com, or call (866) 806-3411, and we'll be happy to mail you a brochure.

We'll give you straight answers and don't hide the details in fine print!

CORN BELT ENERGY CORPORATION, BLOOMINGTON, ILLINOIS



Northern Region employees install a transformer for underground service at Grand Bear Lodge in Utica.

Construction Planning

Are you planning to build or add onto your home or business? If so, please call us at least 4-6 weeks before construction begins. A field engineer will schedule an appointment to meet at the building site. We can do our job more effectively and help make your building experience less stressful, if you follow these simple guidelines:

- Decision makers should be present at the meeting and be prepared to give approval for the locations of poles and/or an underground transformer and for any trenching that may be required.
- Good communication between all interested parties is vital! This includes homeowners (both spouses), builder, electrician, plumber, and contractor. If only one person is able to meet with the Corn Belt Energy engineer, that person should communicate meeting details to all other parties involved in the construction.
- Have the location of the struc-

ture staked or marked prior to the meeting. This enables the engineer to determine the best route to install the new service.

- Know the location of all privately-owned underground facilities including septic systems, wells, geothermal lines, etc. Corn Belt Energy will call J.U.L.I.E. prior to electric installation to request locates for utility lines. J.U.L.I.E. will not mark private facilities.
- If we are installing an underground service, make sure the meter base is in the proper location.
- Please supply the Corn Belt Energy engineer with contact information for your builder and electrician as soon as that information is available.

Good planning and open communications will help ensure that construction deadlines and expectations will be met. For additional information, call (800) 879-0339, extension 702 (Central Region) or extension 304 (Northern Region).

Summer Rates Begin

Members who are billed on rates that include a summer schedule receive a lower rate during the heating season. The following rates have summer schedules for usage from June 1 through August 31 (in the Central Region) and for usage from June 21 through September 20 (in the Northern Region):

- **Rate 1** – Residential & Farm
- **Rate 2** – Residential & Farm 3 Phase
- **Rate 4** – General Service 3 Phase
- **Rate 5** – General Service over 50 kW
- **Rate 12** – Residential Electric Heat for Apartments
- **Rate 113** – Campground Seasonal Central Region
- **Rate 11** – Usage from June 1 through September 30 is billed at a higher rate than during the other eight months of the year.
- **Rate 10 and Rate 19** members with separate metering for electric heat are billed at Rate 1 for usage from May 1 through September 30 (in the Central Region) and from April 21 through September 20 (in the Northern Region).

Members who participate in the Switch 'N Save Program will start receiving credits for their water heating and air conditioning usage from June through September. Currently, this program is only available in the Central Region. For additional information on the Switch 'N Save Program, call (800) 879-0339, extension 222.

OUTAGE REPORT

The following outages affected more than 100 members. Please see our Web site at www.cornbeltenergy.com for a complete list of substation and feeder outages.

DATE	TIME	MEMBERS	AREAS AFFECTED	REASON FOUND
02/02/05	3:00-5:16 a.m.	279	Spring Valley and Ladd substation area	AmerenIP broken transmission pole
02/04/05	2:35-3:40 p.m.	148	Dahinda and Oak Run areas	Tree caused line outage
02/25/05	8:15-9:30 p.m.	224	Dahinda and Oak Run areas	Transformer failed
03/06/05	2:17-3:40 p.m.	719	Le Roy and surrounding area	AmerenIP transmission failed
03/26/05	1:50-2:38 p.m.	719	Le Roy and surrounding area	Bird caused outage at Le Roy substation
03/30/05	6:20-8:58 p.m.	123	Danvers area	Strong winds caused outage
03/30/05	7:34-11:30 p.m.	372	Deland, Fullerton, Weldon and Farmer City	Strong winds broke poles
03/31/05	5:06-5:48 p.m.	579	Normal and east Bloomington	Lightning caused outage

CORN BELT ENERGY CORPORATION, BLOOMINGTON, ILLINOIS

JULY 2005

A Touchstone Energy® Cooperative 

E.O.E. (M/F/H)

Sixth Graders Learn About Cooperative Careers

On April 26, Corn Belt Energy employees visited Tri-Valley Middle School, where they shared information about the following careers at the cooperative: Customer Service, Billing, Engineering, Member Service, Accounting, Operations, Vegetation, Safety, Marketing and Communications. Line personnel also spoke with approximately 50 students about their jobs and demonstrated their tools and equipment.

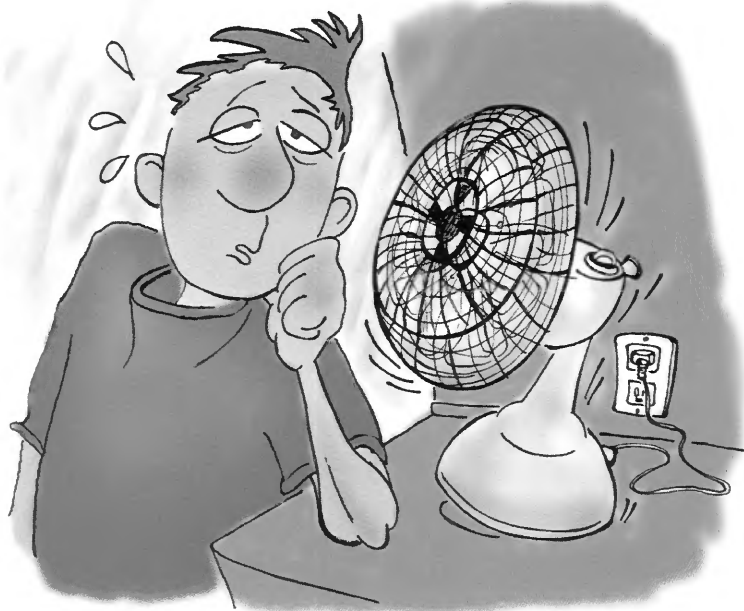
McLean County Community COMPACT has been matching willing businesses with schools for the past 15 years through the Sixth Grade Business/Education Partnership program. Students meet people from area businesses and hear about the skills and education required for positions within those companies. They also learn how their school curriculum relates to the workplace.

If you're interested in finding out how your business or school can participate in the McLean County Community COMPACT Program, call the University of Illinois Extension McLean County at (309) 663-8306. For more information on the program visit their Web site at www.communitycompact.com.



WILL YOU BEAT THE HEAT?

Improve summer efficiency and safety



Energy use and costs typically rise as the mercury rises. Use these energy- and money-saving measures so you and your home can better weather the summer heat and humidity.

Air Conditioning

A substantial portion of total residential energy costs is spent cooling homes. Reduce energy costs and ready the air conditioner with a cleaning and tune-up. Clean or change filters monthly during the cooling season. An efficiently running cooling system will save dollars. If you're purchasing a new unit, check the efficiency rating, or SEER. The higher the SEER number the more efficient the air conditioner. For greater operating efficiency, install the unit in a shady area, away from plant overgrowth and debris.

Windows

Most of summer heat buildup in homes comes through windows. Simply closing curtains, blinds, and shades can reduce this heat gain by up to 40 percent, saving big dollars in cooling costs. Installing awnings or shutters over windows exposed to direct sunlight can reduce indoor heat gain by up to 70 percent. Outdoor landscaping that includes shade trees and insulating foundation plants can also reduce energy costs.

Attics

Ventilate the attic and check insulation. Adequately sized vents and/or an attic fan can help keep hot air from building up. If your attic has less than 6 to 8 inches of insulation, consider adding more. Proper attic insulation can save up to 30 percent of your cooling bill. Be sure the insulation

doesn't block vents or cover exhaust fans.

Fans

Another inexpensive way to keep cool and reduce air conditioning costs is to use ceiling and oscillating fans to create a "wind chill" effect. The moving air makes the temperature feel cooler, and allows a higher air conditioner thermostat setting while maintaining cooling comfort. For each 1-degree increase in the thermostat setting, cooling costs can be trimmed by about 3 percent.

Keeping Cool

Follow these operating tips for greater energy efficiency and reduction in air conditioning costs:

- Install a timer or programmable thermostat to raise and lower the temperature automatically. Leave it on a higher temperature while you're away, and set it to cool the house half an hour before you return home.
- Turn off unnecessary lights and television sets you're not watching. Don't leave computers on when not in use.
- Make sure heat-producing appliances like televisions and lamps are away from the thermostat. They will raise the temperature at the thermostat and cause the air conditioner to run when it is not needed.
- Plan to do hot work—washing and drying clothes, cooking and baking—during cooler morning and evening hours.
- Keep your kitchen cooler by cooking in a microwave oven, or grill outdoors.

For more information and tips to help cut costs and improve home safety, visit www.SafeElectricity.org.

CORN BELT ENERGY CORPORATION, BLOOMINGTON, ILLINOIS

Education Grant Winners Announced

Approximately 30 area teachers and administrators submitted entries for Corn Belt Energy's Education Grant contest. Applicants were required to submit details about any project or program in their school that would enhance learning and is not currently being funded through their district's budget.

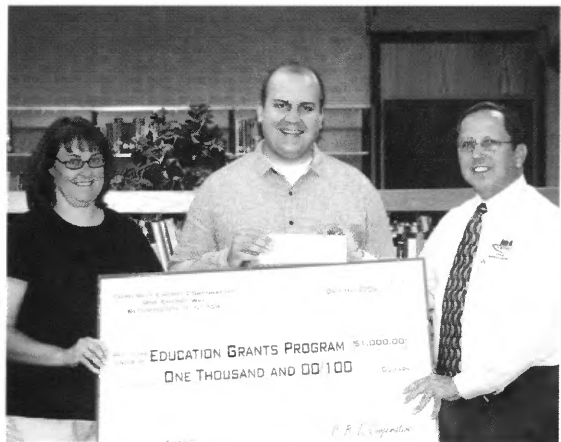
The winners of the \$1,000 Education Grants are:



- 1** Susanne Casey, Washington Elementary School, plans to purchase Earobics and Balanced Literacy computer programs to provide additional reading readiness support for special education students.



- 3** Jennifer Plym and Amy Halm, LaSalle-Peru Township High School, requested funds to purchase program materials to assist in developing social skills of special needs students.



- 2** Dave Hillrich and Michelle Keech, Tremont High School, will be purchasing equipment to capture, edit and produce digital content for curricular projects.



- 4** Jim Carlson, Wallace Grade School Principal, plans to implement curriculum mapping to collect information on operational curriculum.

Thank you to everyone who applied. This was the first year the cooperative has offered this program, and we are pleased with the participation of area educators.

CORN BELT ENERGY CORPORATION, BLOOMINGTON, ILLINOIS



Scholarship Winners Announced

James Reimer of Litchfield
Daniel Lepper of Ashland
Jennifer Meyer of Teutopolis
Kelsey Vandike of Geneseo

A new record of 215 students Applied for the Illinois Electric Cooperatives (IEC) Memorial Scholarship Fund this year. Four winners were selected to receive \$1,000 scholarships to be used for educational costs at an accredited two-year or four-year college, university or vocational/technical school in Illinois. In addition, all four students and their families will be recognized at the IEC Annual Meeting in July.

The IEC Memorial Scholarship Fund was designed to provide financial assistance to deserving students in the "electric cooperative family." The Northern Illinois University Foundation administers the fund.

Thank you to all who applied. For additional information about the IEC Memorial Scholarship competition, call (800) 879-0339, extension 250.

Outage Report

The monthly outage report was not available at the time of publication printing due to computer conversion issues.



Office Closing

**Our offices will be closed Monday, July 4,
in observance of Independence Day.**

Summer Celebration Scheduled

Include Corn Belt Energy's Summer Celebration in your summer plans. Join us for a cookout, rain or shine, featuring hot dogs, brats, watermelon, and more! Bring the family so they can learn about electric safety, enjoy entertainment, and even take a bucket ride. Meet the people who deliver your electricity and celebrate cooperative membership with your neighbors. This is an opportunity for us to say, "Thank you for allowing us to serve you."

**Events are scheduled at two locations
from 4:30 – 7:00 p.m.**

- Thursday, August 11 at the Bloomington office
- Tuesday, August 16 at the Princeton office

Mark your calendar for an evening of fun at your local cooperative. Reservations are required. For additional information and to make reservations, call (800) 879-0339, extension 232 or e-mail cbec@cornbeltenergy.com.

Directions to the Bloomington Office: Approximately 5 miles south of Bloomington on U.S. Highway 150 just west of the intersection of Towanda-Barnes Road.

Directions to the Princeton Office: The Princeton Office is located at 1702 W. Peru.



CORN BELT ENERGY CORPORATION, BLOOMINGTON, ILLINOIS

AUGUST 2005

A Touchstone Energy® Cooperative 

E.O.E. (M/F/D/V)

Made Reservations Yet?



Call or go online today to make reservations for Corn Belt Energy's 2nd Annual Summer Celebration. We're "turning up the heat" at the co-op's cookout this year to deliver great food, entertainment, and fun.

Let us show our appreciation to you, our members, with music, games, children's activities, prizes, and more. Line personnel will be giving demonstrations. Bucket truck rides will be available again this year on a first come basis as time and weather permits.

Mark Your Calendar!

At the Bloomington Office

When: Thursday, August 11, 2005

Time: 4:30 p.m. – 7:00 p.m.

Location: Approximately 5 miles south of Bloomington on U.S. Highway 150 just west of the intersection of Towanda-Barnes Road.

At the Princeton Office

When: Tuesday, August 16, 2005

Time: 4:30 p.m. – 7:00 p.m.

Location: 1702 W. Peru, Princeton



Sign up online at www.cornbeltenergy.com or call (800) 879-0339, extension 232. Come celebrate summer with your friends and neighbors at Corn Belt Energy.

Celebrating Cooperative Ownership

Approximately 35,000 members had reason to celebrate cooperative ownership when they received capital credit checks in June. Checks ranged from \$15 to almost \$62,000, depending on member usage during 2004 and prior years. In the Northern Region, prior years included 1947 through 1955. In the Central Region, capital credits were paid for service in 1954 through part of 1963.

The refund resulted from the board's decision to return \$4 million in capital credits. As a not-for-profit cooperative, positive margins (excess of income over expenses) are returned to members at the discretion of the board of directors according to the financial condition of the cooperative. About \$6.5 million have been returned in capital credits.

"Refunding capital credits is another benefit of cooperative membership," said Jeff Reeves, Corn Belt Energy President and Chief Executive Officer. "In this way, we are fulfilling our promise of integrity and accountability to Corn Belt Energy's member-owners."



John Contarino (left), Director of Service at Sam Leman Chrysler-Jeep receives his check from Dave Hawkinson, Corn Belt Energy Director of Marketing and Public Affairs.



John Martin, Eastview Christian Church Business Administrator



Randy Stoner, Menards® Assistant Store Manager



Joe Frederick, Saturn Sales Manager

CORN BELT ENERGY CORPORATION, BLOOMINGTON, ILLINOIS

Escaping a Vehicle That's in Contact With Power Lines

Remain calm, stay in the vehicle, and call for help. Ask someone to call the electric utility, and a lineman will be sent to disconnect the power. If the power line is energized and you step outside, your body becomes the path to ground and electrocution is the tragic result. Wait until the electric utility arrives to make sure power to the line is cut off.

The only exception would be if fire or the smell of gasoline were present. In that case, the proper action is to jump – not step – with both feet hitting the ground at the same time. Jump clear, without touching the vehicle and ground at the same time. Shuffle or hop to safety keeping both feet together as you leave the area.

Like the ripples in a pond or lake, the voltage diminishes the farther out it is from the source. Stepping from one voltage level to another allows the body to become a path for that electricity. A large difference in voltage between both feet could kill you.

Even if a power line has landed on the ground, there is still the potential for the area near your car to be energized. Stay inside the vehicle unless there's fire or imminent risk of fire. Be sure that at no time you or anyone touches the equipment and the ground at the same time. Occupants should never simply step out of the vehicle—they must jump clear.

Source: www.safeelectricity.com

September 2 Deadline for Natural Gas

Even though icy weather and high gas bills may be far from your mind right now, this is the time to enroll with Corn Belt Energy for your natural gas. Sept. 2, 2005, is the deadline!

If Nicor is your natural gas utility, you can choose your own not-for-profit cooperative for your natural gas supply. Fair prices, easy terms, and personal service!

Isn't that what we all want?

Sign up online at www.cornbeltenergy.com and receive a \$10 check when Corn Belt Energy starts supplying your natural gas. In addition, electric members receive a \$10 credit on their electric bills when they sign up for Corn Belt natural gas supply. Complete details are available online or by calling (866) 806-3411.

Outage Report

The following outages affected more than 100 members. Please see our Web site at www.cornbeltenergy.com for a complete list of substation and feeder outages.

Date	Time	Members	Areas affected	Reason for outage
04/04/05	7:06 a.m. - 8:40 a.m.	941	Goodfield, Secor, DeerCreek & Congerville areas	Squirrel caused substation fuse outage
04/05/05	3:07 p.m. - 5:09 p.m.	117	Goodfield & DeerCreek areas	Faulty underground primary cable
04/10/05	10:30 p.m. - 1:37 a.m.	350	Deland area	Lightning
04/17/05	7:00 a.m. - 8:34 a.m.	252	Goodfield, Secor, DeerCreek & Congerville areas	Car accident - broken pole
04/20/05	5:14 p.m. - 5:50 p.m.	951	Goodfield, Secor, DeerCreek & Congerville areas	AmerenIP transmission problems
04/20/05	5:14 p.m. - 5:50 p.m.	1015	Danvers, Carlock, Stanford & W. Bloomington areas	AmerenIP transmission problems
04/20/05	5:14 p.m. - 5:50 p.m.	389	Mackinaw area	AmerenIP transmission problems
04/20/05	4:25 p.m. - 6:50 p.m.	206	Kappa, El Paso & Secor areas	Arrester failed
04/21/05	6:30 p.m. - 8:50 p.m.	140	Kappa & El Paso areas	Crossarm damaged from lightning
04/22/05	12:00 a.m. - 6:10 a.m.	124	Danvers & West Bloomington areas	Wire broke - hit by lightning
05/07/05	7:15 a.m. - 8:30 a.m.	2289	South & West Bloomington areas	Fire inside Beltline substation
05/19/05	4:55 p.m. - 5:15 p.m.	1075	Oak Run-Dahinda area	AmerenIP transmission problems
05/19/05	4:55 p.m. - 5:15 p.m.	355	Altona area	AmerenIP transmission problems
05/19/05	4:55 p.m. - 5:15 p.m.	286	Galva, Cambridge & Kewanee areas	AmerenIP transmission problems
05/27/05	1:45 a.m. - 4:45 a.m.	865	Norway & Sheridan areas	AmerenIP transmission problems
05/27/05	3:30 a.m. - 4:45 a.m.	459	Wedron area	AmerenIP transmission problems
06/13/05	11:06 a.m. - 11:10 a.m.	407	Ottawa & Utica areas	Deer Park substation work
06/13/05	7:00 p.m. - 1:49 a.m.	356	Deland & Weldon areas	AmerenIP transmission problems
06/13/05	7:17 p.m. - 1:36 a.m.	371	Farmer City & Dewitt areas	AmerenIP transmission problems
06/14/05	9:29 a.m. - 10:40 a.m.	102	Deland & Weldon areas	Wire down due to strong winds
06/14/05	11:00 a.m. - 1:05 p.m.	390	Maroa	AmerenIP transmission problems
06/14/05	11:00 a.m. - 1:05 p.m.	573	Clinton & Wapella areas	AmerenIP transmission problems
06/14/05	11:20 a.m. - 11:50 a.m.	503	Normal & east Bloomington areas	Wire down due to strong winds
06/14/05	1:55 p.m. - 4:40 p.m.	237	Clinton & Wapella area	Wire down due to strong winds

CORN BELT ENERGY CORPORATION, BLOOMINGTON, ILLINOIS

Now available from Corn Belt Energy Corp.,
 Shelby Electric Cooperative and EnerStar Power Corp.
 in conjunction with Illinois Cooperative Association, Inc. (Clear Talk)

NO NONSENSE LONG DISTANCE

NO MONTHLY FEES • NO MINIMUM USAGE • NO TERM AGREEMENT



ALL CALLS IN ILLINOIS

4.5¢

**FREE PERSONAL 800 NUMBER
 NO FEES. SAME LOW RATE.**

- Free to join • No monthly fees
- No monthly minimums
- No term agreements
- Major carrier
- NO CODES TO DIAL
- Six-second increment billing
- 800 Number at same low rates - no fees
- Free calling cards just 12.9¢ per minute (No surcharge)
- All switching fees will be reimbursed
- Overseas calling e.g. United Kingdom: 8 cents per minute.

ALL CALLS OUT OF STATE

4.9¢

Illinois Cooperative Association is offering long distance telephone service through PowerNet Global Communications. This long distance service is one of the lowest-cost long distance services available. As you can see, you can call anywhere in the State of Illinois for a low 4.5¢ per minute or anywhere out of state in the continental United States for 4.9¢ per minute. In addition, you can have your own personal 800 number to receive calls from family members or acquaintances. Incoming calls on your 800 number are billed at the same rates noted above. All rates are the same 24 hours a day - 7 days a week. There are no monthly fees, no minimums or long-term agreements.

FOR ADDITIONAL INFORMATION OR TO ENROLL BY PHONE, CALL TOLL FREE: **1-888-414-4116**
 IF YOU PREFER, YOU CAN FILL OUT APPLICATION BELOW AND FAX TOLL FREE TO: **1-877-990-7466**
 OR JUST MAIL APPLICATION TO:

BTC COMMUNICATIONS, P. O. BOX 1637, ORANGE BEACH, AL 36561

Name _____ Social Security Number _____

Street _____ City _____ State _____ ZIP _____

Telephone Numbers (____) _____ - _____ (____) _____ - _____

Other Services Desired: Toll Free 800 Number Travel Cards...Number of cards requested _____

*If 800 service is desired, enter the telephone number it should ring to (____) _____ - _____

(existing 800 numbers may be transferred to this service... applicable forms are available upon request)

I hereby authorize PowerNet Global Communications, or its designator/agent, to transfer my Interlata and IntraLata (local toll) long distance service. I agree to financial responsibility for all charges arising from all long distance services provided. The service requested will be provisioned only on the approval of credit for the application. A service charge may be assessed by the local telephone company when they make the carrier change. PowerNet Global will reimburse any such charges if you enclose a copy of said charge when remitting a payment to PowerNet Global.

CUSTOMER SIGNATURE _____ DATE _____

CORN BELT ENERGY CORPORATION, BLOOMINGTON, ILLINOIS

SEPTEMBER 2005

A Touchstone Energy® Cooperative 

E.O.E. (M/F/D/V)

Training Important for Co-op Directors

Just as Corn Belt Energy has changed in the past 67 years, so has the training for your cooperative's board of directors. Gone are the days when the only duty of a board member was to attend a monthly meeting at the local cooperative.

Elaborate engineering and regulatory and demographic changes have reshaped the electric utility business into what it is today – a complicated mix of legal and governmental issues. And in order to stay current on issues, it's imperative that directors work at continuing their electric co-op education.

"If we don't stay on top of the issues currently affecting our co-op, we won't have the information necessary to adopt effective policies on behalf of our members," says Jan Reimer, Assistant Secretary-Treasurer, District 1.

It's the duty of the manager of the cooperative to run the co-op business, but it's the job of the board members to set the policies that govern how your cooperative is run. Without education, directors would not be able to make sound decisions about operations and everyday business of the cooperative. This includes the cooperative's financial condition, risks, opportunities, industry and regulatory changes, and performance measures.

"Ongoing education and training is the most valuable way of ensuring



Janice Reimer
 Assistant
 Secretary-Treasurer
 Carlock
 District 1



Rae F. Payne
 Chairman
 Bloomington
 District 1



James E. Adams
 Bloomington
 District 1



Robert Whitwood
 Hudson
 District 1



Michael Killian
 Lexington
 District 1



Jerry Starkey
 LeRoy
 District 1

(continued on page 16b)

(continued from page 16a)

that the board of directors will continue to be effective leaders during changing times," says Rae Payne, Chairman of the Board, District 1.

There are two continuing education certificates that an electric cooperative director can earn. The Credentialed Cooperative Director (CCD) Certificate and the Board Leadership Certificate.

In 1998, the National Rural Electric Cooperative Association (NRECA) developed a training program consisting of five one-day courses including Director Duties and Liabilities, Understanding the Electric Business, Board Roles and Relationships, Strategic Planning, and Financial Decision-Making.

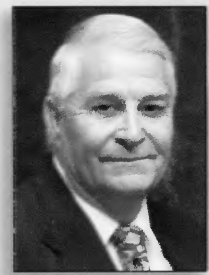
After earning their CCD certificate, directors are encouraged to enroll in advanced courses that focus on the latest topics challenging the co-op world. This year, there are 11 classes, each worth one to three credits. Directors who complete 10 credits earn the Board Leadership Certificate.

"So much of the job of an electric cooperative director has changed," says Dennis Fredrickson, Director, District 6. "I felt I should earn my CCD to keep up with all the changes in the industry."

So even though the duties of an electric cooperative board member have changed through the years, their goal has never faltered: To provide the best and most informed cooperative decisions on behalf of you ... the owners.



Thomas Johns
Delavan
District 2



Ralph L. Steiger
Delavan
District 2



Stephen S. Schertz
Vice Chairman
El Paso
District 3



Gary Archey
Clinton
District 4



Laverne Malone
Maroa
District 5



Dennis Fredrickson
Victoria
District 6

CORN BELT
ENERGY



Charles Meisenheimer
Walnut
District 7



Albert Hagenbuch
Secretary-Treasurer
Utica
District 8



Robert Angus
Ottawa
District 9

CORN BELT ENERGY CORPORATION, BLOOMINGTON, ILLINOIS

Are You Eligible for Energy Assistance?

If you're over 60-years-old, disabled, low income, or your electricity has been disconnected, you may qualify for energy assistance. To apply for assistance, contact the agency for your county listed to the right. Ask about the Low-Income Home Energy Assistance Program (LIHEAP).

The program begins September 1 for senior

Carver Community Action Center 235 E. Main Street Galesburg, IL 61402-0028 (309) 342-0158	Knox	Mid Central Community Action, Inc 923 E. Grove Street Bloomington, IL 61701-4201 (309) 829-0691 (McLean) or (815) 844-3201 (Livingston)	McLean Livingston
Central Illinois Economic Development Corporation 1800 5 th Street Lincoln, IL 62656-9117 (217) 732-2159	DeWitt Menard Logan Piatt Mason	Project NOW Inc. 418 19 th Street Rock Island, IL 61204-3970 (309) 793-6391	Henry Mercer Rock Island
Decatur-Macon County Opportunities Corporation 1122 E. Marietta Street Decatur, IL 62521-1324 (217) 428-2193	Macon	Tazwood Community Services, Inc Field Shopping Center 2005 S. Main Street Morton, IL 61550-2915 (309) 266-9941 or (309) 694-4391	Tazewell Woodford
East Central Illinois Community Action Agency, Inc. 56 N. Vermilion Street Danville, IL 61834-1335 (217) 443-2705	Ford Iroquois Vermilion	Tri-County Opportunities Council Bureau 405 Emmons Avenue Rock Falls, IL 61071-0610 (815) 625-7830 or (800) 323-5434	Carroll Putnam Lee LaSalle Ogle Stark Whiteside Marshall
Kendall-Grundy Community Action 500A Countryside Center Yorkville, IL 60560-1063 (630) 553-9100 (Kendall) or (815) 941-3262 (Grundy)	Kendall Grundy		

Assistance to Military Families

Thousands of members of the Illinois National Guard and reserves have been called to active duty since September 11, 2001. Approximately 55 percent of those men and women take a pay cut. For some, the income reduction is as much as 70 percent. Through the Illinois Military Family Relief Fund, your contribution will help guard members and reservists and their families defray expenses that become difficult to afford when a wage earner temporarily leaves civilian employment for active military duty.

"Illinois was the first state to create a state-administered relief fund for military families," stated Eric Schuller, Senior Policy Advisor to Lieutenant Pat Quinn. "This is a way that people can know that 100 percent of the money goes to men and women who are serving in our armed forces."

Typically, soldiers spend \$400-\$700 on supplies to prepare for deployment. The military

doesn't pay for those expenses. And when a soldier is wounded, the family may have expenses to stay near the soldier while they are hospitalized. The Military Family Relief Fund offers grants to assist those families.

Contributing to this fund is a way for citizens on the home front to express their appreciation for National Guard members and reservists on the frontlines.

Payments can be made by credit card online via E-PAY at the Illinois Military Family Relief Fund Web site at <http://illinoisePAY.com> or by sending donations to:

Illinois Military Family Relief Fund
PO Box 8889
Springfield, IL 62791
(866) 417-8889

CORN BELT ENERGY CORPORATION, BLOOMINGTON, ILLINOIS

Winter Rates Begin

CENTRAL REGION

Winter rates begin Sept. 1 for the following rates:

Rate 1 – Residential & Farm

Rate 2 – Residential & Farm 3 Phase

Rate 4 – General Service 3 Phase

Rate 5 – General Service Over 50 kW

Rate 12 – Residential Electric Heat Apartments

Rate 11 Residential & Farm Service Interruptible winter rate begins Oct. 1. Credits end Sept. 30 for Central Region Load Management Interrupt Programs.

NORTHERN REGION

Winter rates begin Sept. 21 for the following rates:

Rate 1 – Residential, Campground & Farm – Single Phase

Rate 2 – Residential & Farm Service – 3 Phase

Rate 4 – General Service – 3 Phase

Rate 5 – General Service >50 kW – 3 Phase

Rate 19 – Electric Heat – Separately Metered

Rate 113 – Campground Seasonal – Single or 3 Phase

Outage Report

The following outages affected more than 100 members. Please see our Web site at www.cornbeltenergy.com for a complete list of substation and feeder outages.

Date	Time	Members	Areas affected	Reason for outage
07/09/05	5:48 p.m. - 11:00 p.m.	146	Danvers & west Bloomington areas	Line fuse out - cause unknown
07/17/05	8:00 a.m. - 10:20 a.m.	359	Sheffield, Wyanet, Buda & surrounding areas	Regulator failed inside Sheffield substation

OFFICE CLOSING

Corn Belt Energy offices will be closed on Monday, September 5 for the Labor Day Holiday. In case of an emergency, please call (800) 879-0339.



September 2 Deadline for Natural Gas

If Nicor is your natural gas utility, there's still time to choose Corn Belt Energy for your supplier. September 2, 2005, is the deadline!

Sign up online at www.cornbeltenergy.com and receive a \$10 check when Corn Belt Energy starts supplying your natural gas. In addition, electric members receive a \$10 credit on their electric bills when they sign up for Corn Belt natural gas. Fair prices, easy terms, and personal service! Isn't that what we all want? Complete details are available online or by calling (866) 806-3411.



CORN BELT ENERGY CORPORATION, BLOOMINGTON, ILLINOIS

OCTOBER 2005

A Touchstone Energy® Cooperative 

E.O.E. (M/F/D/V)

Summer Celebration Highlights



More than 760 members, employees, and directors attended the Summer Celebration festivities at the Bloomington and Princeton offices in August. The events were held to celebrate the cooperative partnership of members, employees, and directors. The venues provided members the opportunities to learn more about the cooperative, visit with cooperative leaders, and enjoy a summer evening with friends and neighbors.

Good food, live music, line demonstrations, bucket rides, kids' activities, chainsaw carving, and fire safety training entertained

guests. Prize drawings were held for three chainsaw carvings and Menards gift cards. The winners included:

- Marlene Simonson, Bloomington, eagle carving
- Sherilyn Light, Bloomington, owl carving
- Lorena Barrett, Shirley, \$50 gift card
- Janice Freitag, Bloomington, \$25 gift card
- Aaron Stacey, DeWitt, \$25 gift card
- Eileen Funfsinn, Arlington, eagle carving

■ **Continued on 16b**

■ **Continued from 16a**

- Martin Gutzmer, Cambridge, \$50 gift card
- Jerry Hochstatter, Sheffield, \$25 gift card
- Mary Sondgeroth, Mendota, \$25 gift card.

It's a unique experience, in these modern times, to be invited by your utility to enjoy a free meal prepared and served by management, directors, and union personnel. Outside of a cooperative environment, it's unlikely the President/CEO will ever serve

you a snow cone, or you'll have the opportunity to discuss corporate issues with a board member as you enjoy refreshing bowls of watermelon.

Despite technology advances and increased membership growth, the cooperative's philosophy has not changed; serving members by working together, sharing information, and providing education.

The Coop Advantage

At Corn Belt Energy, one priority rings through loud and clear – the member comes first! Day in and day out, the men and women at your local cooperative work hard to represent your interests – those of our member-owners.

Energy cooperatives are “of, by and for” the people they represent. Being a member-owner of your co-op means you, along with your neighbors, own the company and have a voice in the decisions the co-op makes on your behalf. And that is a fundamental difference between your local energy co-op and other energy providers.

Let's face it. Most consumers don't have the time or interest to get too involved in the details of providing safe, reliable power. Most folks are too busy with their own jobs or families to have the time to focus on these issues. So that's where Corn Belt Energy comes in. Our job is to be your advocate – to put you first – as we work in the energy industry on your behalf.

The values your local co-op brings to the energy business keep us focused on serving your needs and your needs alone. Our Members First focus ensures that we continually look for ways to improve our ability to meet your needs and strengthen the qual-

ity of life in the communities in which we live and work. The trust you've placed in us is something we take very seriously, and we work hard every day to earn it.

Corn Belt Energy continues to fight every step of the way to ensure that the interests of every consumer we serve are preserved – from the very biggest factory, to the small business owner, to the hard working families in the neighborhoods and farms where we live and work.

Corn Belt Energy has been offering consumers a real choice from the day we opened our doors. Through your ability to elect board members who will represent you, you – the member – get to decide how the cooperative is run and what services it offers.

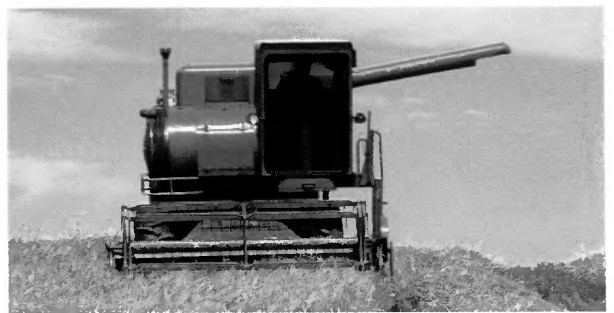
Under the watchful eye of locally elected board of directors, Corn Belt Energy is focused on delivering high-quality, reliable, and affordable service every day to the people and business we serve.

Our vision for the future is one that puts the members first – above all other priorities. This has been our commitment for 67 years, and it remains so today.

Avoid Harvest Accidents

Prevent tragic accidents by reviewing the following practices with all who work around power lines:

- Know the location of power lines and keep farm equipment at least 10 feet away from them.
- Always lower portable augers or elevators to their lowest possible level - under 14 feet - before moving or transporting; use care when raising them.
- When moving large equipment or high loads near a power line, always use a spotter, or someone to help make certain that contact is not made with a line.
- Be aware of increased height when loading and transporting larger modern tractors with higher antennas.
- Never attempt to raise or move a power line to clear a path!
- Don't use metal poles when breaking up bridged grain inside and around bins.



- As in any outdoor work, be careful not to raise any equipment such as ladders, poles, or rods into power lines. Remember, non-metallic materials such as lumber, tree limbs, tires, ropes, and hay will conduct electricity depending on dampness and dust and dirt contamination.
 - Use qualified electricians for work on drying equipment and other farm electrical systems.
- Source: www.safeelectricity.org

CORN BELT ENERGY CORPORATION, BLOOMINGTON, ILLINOIS

Geothermal Heating Provides the Best Value

The propane industry launched a national advertising campaign this year comparing propane to electricity. You may have seen the television ads with Mr. Propane, Mr. Electricity, and Mr. Wood. Their message is that propane is more desirable for heating than electricity. Even though the clips are humorous and entertaining, the message "smells funny."

The truth is state-of-the-art technology and rising gas and propane prices make electric geothermal systems the best option for your heating and cooling needs. And did you know that Corn Belt Energy offers a low electric heat rate of \$.03955 per kwh?

What is a geothermal system?

Just a few feet underground, the temperature stays a steady 55° all year long. Geothermal systems use underground pipes to transfer heat between your home and your yard. In wintertime, the system brings heat inside and raises it from 55° to the desired temperature. An electric air handler distributes it throughout your ductwork. During the summer, the geothermal system reverses the process by transferring heat from inside your home into the ground and distributing cooler air.

Ask Corn Belt Energy members, Bill and Karen Atherton, what they think of their geothermal system. According to Karen, they live in an old farm house in rural Danvers. They were looking for an efficient heating and cooling system that would provide consistent air temperatures and be the most economical. "Installing a geothermal system was the best decision we made. Not only does it keep us warm in the winter and cool in the summer, our electric bills are low, and we have hot water as a by-product."

A geothermal system can be installed in a new or existing home.

By using your home's existing ductwork, it's

easy to convert. To minimize the impact of installing underground loops, contractors use special equipment to install the piping.

Geothermal systems are safe and reliable!

Geothermal systems rely on proven technology. With few moving parts, they are more reliable and last longer than furnaces. Because there's no combustion, they do not produce dangerous gases such as carbon monoxide. The pipes are underground, won't harm plants or animals – and the liquid inside is environmentally friendly.

Now is the time to consider the advantages of a geothermal heating/cooling system for your home or business:

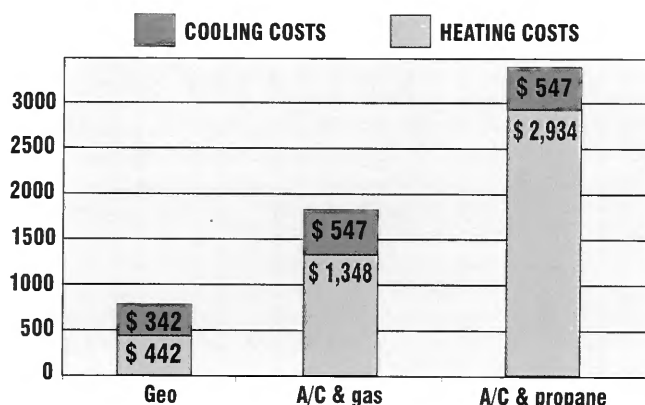
- According to the U.S. Environmental Protection Agency, geothermal systems save homeowners 60 percent in heating costs and 50 percent in cooling costs compared to conventional systems.
- Because geothermal systems are more efficient, they pay for themselves in approximately 5 to 10 years and keep saving you money after that!
- They are highly reliable, require little maintenance, and are built to last for decades. The unit is 3-4 times more efficient than other furnaces.
- They add considerably to the value of homes.
- They are cleaner and environmentally friendly.
- They use a limitless source of heating and cooling from the earth.
- There is no noisy outside unit.
- Since hot water is a by-product of the system, approximately 35 percent of the water heating is virtually free.

To find out how a geothermal heating and cooling system can save you energy dollars, contact the Member Services Department at (800) 879-0339, ext. 228 or ext. 222.

Fuel Costs

Graph below based on heating and cooling a 2,500 sq. ft. house with average insulation. Heating costs based on 5,800 heating days of 0° days. Summer costs based on 950 cooling days of 90° days. Fuel costs based on electricity at \$.04 (.0395 rounded) for heating and \$.10 for cooling; \$.79 per therm for CBEC natural gas (excludes delivery charges); and \$1.59 per gallon for propane (Bloomington average prices). All prices as of August 31, 2005.

	Heating costs	Cooling costs
Geo	\$ 442	\$ 342
A/C & gas	\$ 1,348	\$ 547
A/C & propane	\$ 2,934	\$ 547



CORN BELT ENERGY CORPORATION, BLOOMINGTON, ILLINOIS



We'll keep the
lights on for
you if you'll
keep the lights
on for them.

We're your
Touchstone Energy
Cooperative



Touchstone Energy®
The power of human connections

Daylight Saving Time Ends October 30

It's that time again to set your clocks back. When you change your clocks in the spring and in the fall, it's a good time to replace the batteries in your smoke detectors!

To ensure your detectors

are in good order, do the following:

- Replace smoke detectors that are more than 10 years old.
- Test smoke detectors to make sure alarms are working.
- Vacuum smoke detectors

to remove cobwebs and dust. A buildup can make detectors less sensitive.

- "Chirps" coming from a smoke detector mean batteries are running low. Change the batteries once a year.

OUTAGE REPORT

The following outages affected more than 100 members. Please see our Web site at www.cornbeltenergy.com for a complete list of substation and feeder outages.

MEMBERS	AREAS AFFECTED	REASON FOR OUTAGE
236	Le Roy area	Wire burned
177	Troy Grove area	Lightning burned insulator causing downed wire
1565	South and East Bloomington and Downs areas	AmerenIP switching error
591	East Bloomington (Towanda substation)	Lightning
378	Maroa, Kenny and Warrensburg areas	AmerenIP lost transmission
547	Clinton and Wapella areas	AmerenIP lost transmission

CORN BELT ENERGY CORPORATION, BLOOMINGTON, ILLINOIS

NOVEMBER 2005

A Touchstone Energy® Cooperative 

E.O.E. (M/F/D/V)

Advanced Technology Improves Service



Kevin Tarr, AMR meter installer from Hughes Supply Company, and Jill and George Scott, recipients of the first AMR meter.

The process to read your meter, bill your account, and restore your electric service is changing significantly due to the installation of automated meter reading (AMR). The project, which began in August 2005, is expected to be completed sometime in 2008.

AMR is a system of communication between an electric meter, the substation that feeds the electric service, and our office. By installing a new AMR meter at your home or business, Corn Belt Energy personnel can send a signal remotely through the power lines and obtain your meter reading almost instantaneously.

Currently, part-time personnel read more than 30,000 meters every month. They document the meter readings in books, from which the data is manually

entered into our computer system. When the reader is not able to access a meter, usage is estimated on the member's next bill.

As AMR meters are installed, it's no longer necessary to estimate usage. Meters are read remotely, and the data is collected into a report, which is reviewed for accuracy and potential service-related issues before billing. This improves service by eliminating transposition errors, ensures accurate readings every month, and speeds up the billing process time.

AMR makes it more convenient for members who are moving to or from locations. When an AMR module is located at a premise, it's no longer necessary for members to call in their own final readings. We'll be able to read meters remotely on the dates requested.

(Continued on page 16c)

Get Ready To Save Money

Just because you're a Corn Belt Energy member!

Corn Belt Energy Corporation is launching the Co-op ConnectionsSM Program, a new card-based member benefit program for Touchstone Energy[®] cooperatives. The program is designed to deliver added value to cooperative members while promoting local businesses.

A free program to cooperative members and businesses, it benefits Corn Belt Energy members by offering valuable discounts at participating local and national businesses. Businesses benefit from increased customer visits by Touchstone Energy members and national exposure on the Co-op Connections Web site at www.connections.coop. A link to this site is also available at www.cornbeltenergy.com.

In early November, Corn Belt Energy members will be mailed Co-op Connections cards. It will be easy to identify participating businesses by the Co-op Connections decals in their windows. Whenever a Co-op Connections customer – whether from Corn Belt Energy or from one of hundreds of Touchstone Energy co-ops across the country – shows their card at a participating business, they receive a discount.

Thousands of businesses are participating nationwide. Now you'll be able to search online before shopping locally or traveling out of state. You'll find discounts at all types of businesses including hotels, restaurants, amusement parks, retail stores, medical services, and lots more! If you don't have access to the

The Co-op Connections Program is another way our members benefit from being a part of their energy cooperative."

Internet, call your cooperative at (800) 879-0339 and request a list of participating businesses for a selected area.

"The Co-op Connections card is a valuable tool that creates an even greater sense of membership and reinforces Corn Belt Energy's longstanding commitment to community," said President/CEO Jeff Reeves. "It will add value and increase customer loyalty at participating businesses. Simply put, the Co-op Connections Pro-

gram is another way our members benefit from being a part of their energy cooperative."

Touchstone Energy is a national alliance of local, member-owned energy cooperatives providing high standards of service. More than 600 Touchstone Energy cooperatives in 44 states are delivering energy and energy solutions to approximately 22 million customers every day. Touchstone Energy cooperatives serve their members with integrity, accountability, innovation, and commitment to communities.

Additional information is available at www.cornbeltenergy.com or by calling (800) 879-0339.



CORN BELT ENERGY CORPORATION, BLOOMINGTON, ILLINOIS

Co-op personnel will be able to identify every member who is without power during a storm, therefore speeding up the process of analyzing the source of the outage and reducing service restoration time.

We are scheduled to replace meters in the Bloomington-Normal area by early 2007, with the remainder completed in 2008. Weather conditions and equipment availability will determine the schedule.

Prior to replacing your meter or installing an AMR module, Corn Belt Energy will notify you

by postcard. In addition, a meter installer will make an attempt to see if anyone is home before exchanging the meter. The process will only take a few minutes.

At Corn Belt Energy, we are committed to improving service. By installing AMR technology, the people at your cooperative are taking a giant step to improve your service!

Thank you for your cooperation and patience during this transition. For additional information, e-mail us at cbec@cornbeltenergy.com or phone (800) 879-0339, Ext. 222 or Ext. 228.

Nominations Accepted For Director Positions

The terms of the following Corn Belt Energy directors will expire at the March 11, 2006 annual meeting: Janice Reimer from Carlock (District 1); James Adams from Bloomington (District 1); Thomas Johns of Delavan (District 2); Gary Archey from Clinton (District 4) and Charles Meisenheimer from Walnut (District 7).

In accordance with the by-laws, the board of directors confirmed a Nominating Committee in September. The following active members were appointed to serve on the committee:

- **Paul Dubravec**, 16 Cameron Ct., Bloomington, 61704
- **Brad Johnson**, 1499 N. 2550th Rd., Ottawa, 61350
- **Robert D. Haas**, R.R. 4, Box 291, Clinton, 61727
- **Kenneth West**, 2244 Knox Rd., 2250 E., Victoria, 61485
- **Alan Peters**, 3316 E. 3rd Rd., LaSalle, 61301
- **Ken Siegrist**, 8590 Locust Rd., Delavan, 61734
- **Gary Moncelle**, RR 2, Box 96, Lexington 61753
- **Gene Hoffman**, RR 4, Box 271S, Clinton 61727
- **Marvin Polte**, R.R. 2, Box 215, Sheffield, 61361
- **Peter Borowski**, 3017 Thornwood Lane, Bloomington, 61704
- **Owen Arvin**, R.R. 1, Box 152, Carlock, 61725
- **Terry Longman**, 1478 County Rd. 2600 East, El Paso, 61738
- **James Rafferty**, 28356 E. Hwy. 150, Le Roy, 61752
- **Arlis Springer**, 25349 Litwiller Road, Delavan, 61734
- **R.D. Henry**, 315 County Road, 2600 E., Hudson, 61748

The Nominating Committee will meet at the Corn Belt Energy office in Downs at 11 a.m. on December 1, 2005. Any cooperative member who is interested in being nominated to the board of directors should contact a Nominating Committee member prior to their meeting. The committee can nominate no more than two individuals for each expiring directorship.

Any active cooperative member may also be nominated for election by petition. Any 50 active members of the cooperative, by their petition, may propose the name of any qualified member as an additional nominee. The nominated person must have active service in the board district of the vacancy, and no other directors can live in the same township. Petitions to nominate directors

must be filed at Corn Belt Energy's office no later than February 9, 2006.

The election to fill the director seats will take place at the annual meeting, which will be held at 10 a.m. on Saturday, March 11, 2006, at the Normal Community High School, 3900 E. Raab Rd., Normal. **Please note the location.**

The board of directors is composed of 15 active members, who represent the membership in the operation of the cooperative. The detailed procedure for choosing a director is stated in the bylaws of the corporation. Active members interested in more information pertaining to the nominating and petitioning processes can request a copy of the current bylaws by calling (800) 879-0339, Ext. 232.

This year, show you care by giving a Corn Belt Energy gift certificate.

All of us know a relative, neighbor or family in the community who could use help paying their utility bills. Corn Belt Energy gift certificates (**in increments of \$25, \$50 or \$100**) are a great way to share with others throughout the year. When you order by phone, you can pay by check or credit card. We'll send the certificates to you or, if you wish, we'll send them anonymously for you. Simply call us at (800) 879-0339, and press Extension 701. Give an energy gift certificate and make a difference.



Office Closing

Corn Belt Energy Offices will be closed Thursday, November 24 and Friday, November 25 to celebrate the Thanksgiving Holiday.

The staff and management wish to express their thanks to the employees, directors, and members who support the cooperative through their time and talents.

Have a happy holiday!



OUTAGE REPORT

The following outages affected more than 100 members. Please see our Web site at www.corn-beltenergy.com for a complete list of substation and feeder outages. Please note: Dates and times were omitted for July outages in last month's edition. We apologize for the error.

DATE	TIME	MEMBERS	AREAS AFFECTED	REASON FOR OUTAGE
07/21/05	9:45 p.m. - 12:40 a.m.	236	LeRoy area	Burned wire - line down
07/26/05	7:25 p.m. - 10:15 p.m.	177	Troy Grove area	Lightning burned insulator-wire down
08/01/05	1:24 p.m. - 2:10 p.m.	1,565	South and East Bloomington and Downs areas	AmerenIP switching problem
08/10/05	5:08 p.m. - 5:24 p.m.	591	East Bloomington (Towanda substation)	Lightning
08/19/05	2:11 a.m. - 5:32 a.m.	378	Maroa, Kenny, and Warrensburg areas	AmerenIP transmission failure
08/19/05	2:11 a.m. - 5:32 a.m.	547	Clinton and Wapella areas	AmerenIP transmission failure
08/24/05	10:09 a.m. - 10:40 a.m.	234	McNabb area	Maintenance - pole replacement
09/14/05	1:00 a.m. - 4:10 a.m.	320	Chenoa, Lexington, and Gridley areas	AmerenIP transmission failure
09/14/05	1:00 a.m. - 4:10 a.m.	514	Cooksville, Colfax, Towanda, and Hudson areas	AmerenIP transmission failure
09/14/05	1:00 a.m. - 4:55 a.m.	419	Saybrook, Bellflower, Arrowsmith, and Gibson City areas	AmerenIP transmission failure
09/14/05	1:00 a.m. - 4:55 a.m.	844	Holder, Downs, and East Bloomington areas	AmerenIP transmission failure

CORN BELT ENERGY CORPORATION, BLOOMINGTON, ILLINOIS

DECEMBER 2005

A Touchstone Energy® Cooperative 

E.O.E. (M/F/D/V)

More Than 100 Businesses Onboard for Co-op Connections

By now, you should have received your Co-op Connections Card, which entitles you to receive discounts at more than 100 participating local businesses and more than 5,000 businesses nationwide.

This is a **free** benefit, just because you're a member of Corn Belt Energy. We're working with local businesses and our fellow Touchstone Energy cooperatives to establish more and more valuable discounts. To suggest your favorite business, e-mail connections@cornbeltenergy.com.

We'll keep you updated as additional businesses agree to participate in the program. Details will be available in the Illinois Country Living Magazine and at our Web site: www.cornbeltenergy.com. Show your Co-op Connections Card at the following businesses and receive their special offers:



Bloomington

- **Aaron's Sales & Lease**
1724 RT Dunn Drive
50% off 1st month's payment.
- **Baller Eye Care Center**
210 1/2 N. Williamsburg
10% off first pair of glasses. Ask for current offers. Only 1 discount will apply.
- **Bard Optical**
1407 N Veterans Parkway
20-40% off all eye care products/ reduced exam fee for Preferred Program Providers.
- **Baymont Inn**
604 1/2 1AA Drive
10% off.
- **Brad Barker Honda**
1602 General Electric Road
10% off oil & filter change. Honda cars only. Not valid with other discounts.
- **BrokersDiscount.com**
2409 E. Washington St., Suite B
Free market analysis on your home. Home must be located in McLean County.
- **Busey Bank**
301 Fairway Dr.
\$100 off closing costs of 1st mortgage loan and 25 basis point reduction of closed-end home equity loan rate. New originations only.
- **Bussy's Automotive**
1627 Commerce Parkway
10% off brake repair over \$200/\$100 off any motor fuel system clean.

- **Carpet Weaver's Floor Care**
902 Eldorado Road
10% off all services.
- **Chem-Dry CleanMasters**
3 Turtleback Ct.
15% off carpet and upholstery cleanings over \$100. Serve McLean, Dewitt, Peoria, Tazewell, and Woodford Counties
- **Chuck's Harley-Davidson, Inc.**
2027 Ireland Grove Rd
10% off Harley-Davidson t-shirts, sweatshirts, and leather jackets.
- **Cindy's Cinnamon Rolls**
1615 E Empire Suite 1190
10% off any purchase.
- **Clay Dooley Tire**
1507 East Vernon Avenue & 307 E. Grove
\$25 off set of tires installed. No carry outs or wholesale/up to \$200 off auto repair. \$50 minimum purchase. Offer valid at time of purchase.
- **Comfort Inn**
505 Brock Dr.
15% off room rates on conference room rental.
- **Culver's**
1807 W. Market St & 901 N. Hershey Rd.
Free regular sundae with purchase of any dinner.
- **Davis Tire and Auto Service, Inc.**
1809 Eastland Drive
Discounts up to 10% off retail price

on all tires & mechanical parts & service/5% discount on sale items. Some restrictions apply. Ask for details.

- **Glass Specialty Company**
3302 Gerig Dr.
\$20 Walmart gift card with auto glass replacement. \$25 off rhino lings where applicable. Does not apply to windshield repairs.
- **Gloria Jean's Coffees**
1615 E Empire (Eastland Mall)
50 cents off any medium or large drink or \$1 off 1 pound whole bean coffee.
- **Heavenly Ham**
1407 N. Veterans Parkway
10% off a box lunch. Dine in only.
- **Mad Bean Painting & Design**
1004 1/2 North Lee St.
\$50 off any customer painting job under \$400 and \$100 off any customer painting job over \$400.
- **Mid-Illini Credit Union**
1811 Eastland Dr.,
Open checking account & get first box of checks free. \$200 off closing costs for home mortgage. Must show card for offers. Must work or reside in McLean County to become a member.
- **Mole Hole of Eastland**
1615 East Empire Street
\$5 off any purchase of \$25 or more.

(Continued on page 16b)

- **Monster Pawn & Monster Deals**
1610 RT Dunn Drive
\$1 off all DVDs
Must show card to clerk for discount.
- **National City Mortgage**
202 E. Washington St.
\$200 off closing costs. Must identify yourself on application as Corn Belt Energy member. Keith Thompson specifically must be identified at application.
- **Ned Kelly's Steakhouse**
1603 A. Morrissey
Free half onion loaf appetizer or skillet cookie dessert for 2 with purchase of 2 dinner entrees. Not valid with other discounts or offers
- **Nybakke Vacuum Shop Inc.**
814 I.A.A. Drive
10% off disposal bags or filters
Not valid with other discounts or offers.
- **OSF St. Joseph Medical Center-Center For Healthy Lifestyles**
2200 E. Washington St.
10% off of any regularly priced merchandise at the Center for Healthy Lifestyles.
- **Paint Depot**
2407 GE Road
20% off.
- **Papa Murphy's Take n Bake Pizza**
2402 E. Oakland Ave.
\$2 off any regularly priced family size pizza.
- **Peoples Bank**
1 Brickyard Dr. Ste 301 & 1218 Towanda Ave.
\$25 credit toward opening a new personal or business account. \$100 discount on closing cost for residential mortgage. Limit 1 per household per year. Offer may be withdrawn or amended without notice.
- **Personal Touch Cleaning Company**
2412 E. Washington St., Ste. 7A
\$20 off 1st cleaning with ongoing service for new customers/\$15 off LX cleanings
- **Pheasant Lanes Bowling and Miniature Golf**
804 N. Hershey Rd.
Buy 1 game of bowling and get 2nd free. Limit 1 per visit. During open bowling days only. Not valid with other discounts or offers.
- **Red Wing Shoe Store & Adrian's Shoe Repair**
1210 Towanda Plaza
10% off regular priced merchandise
Not valid with other offers or discounts.
- **Ride The Nine Home of Shooters Lounge**
503 N. Prospect
15% off billiard time.
- **Rocky Mountain Chocolate Factory**
101 N. Veterans Parkway
10% off purchase.

- **Ryan Pharmacy**
1118 E. Oakland
\$10 off new prescription
Medicare and some 3rd party insurers excluded. 1 per family per year.
- **Sam Leman Automotive Group**
1602 Commerce Pkwy
10% off maintenance services.
- **Specs Around Town Optical Boutique**
317 N. Center St.
\$25 off any in-stock sunglasses
Not valid with other offers.
- **Stiles Automotive**
905 S. Morris Avenue
10% discount
Excludes used cars.
- **T.C. Buzz Coffee Co.**
2103 N. Veterans Parkway Suite #304
15% off all beverages.
- **Tarvin's Culligan Water Conditioning**
#8 Gilmore Dr
Try a Culligan water softener for only \$9.95 a billing for 3 billings, or \$100 off purchase price of a Gold Series water softener. Free in-home water testing.
- **The Chocolatier Inc**
514 N. Main St
5% off all assortment boxes
Truffles not included.
- **Union Auto Sales**
1201 S. Main St.
\$100 off purchase. Must present card at purchase.
- **US Cellular**
115 Krispy Kreme Dr. Suite 2
20% off on all accessories.
- **Wingate Inn**
1031 Wylia Drive
\$59 plus tax any standard room (King or Double). Based on availability. Book in advance through Sales Dept.
- **YWCA of McLean County**
1201 N. Hershey Rd.
Buy 10 fitness classes for \$50 & get \$50 off annual Healthy Benefits Plus. Buy annual fitness membership & get 10% off. Offers apply only to new customers. Co-op Connections Card must be shown to receive offer.

Canton

- **Bard Optical**
127 N. Main
20-40% off all eye care products/reduced exam fee for Preferred Program Providers.

Champaign

- **Bard Optical**
907 Market View Dr., Unit 7
20-40% off all eye care products/reduced exam fee for Preferred Program Providers.

Dahinda

- **Discount Wildlife Service**
250 Greenleaf Ct.
\$25 off the cost of service call/\$10 off the cost of chimney cap.

Decatur

- **Bard Optical**
288 N. Park
20-40% off all eye care products/reduced exam fee for Preferred Program Providers.

- **Glass Specialty Company**
505 E. William
\$20 Walmart gift card with auto glass replacement. \$25 off rhino lings where applicable. Does not apply to windshield repairs.

Downs

- **Bevande Café**
#1 Mike's Way
50 cents off any drink
Not to be combined with other offers.
- **Peoples Bank**
#1 Mike's Way
\$25 credit toward opening a new personal or business account. \$100 discount on closing cost for residential mortgage. Limit 1 per household per year. Offer may be withdrawn or amended without notice.

East Peoria

- **Bard Optical**
416 Riverside Dr
20-40% off all eye care products/reduced exam fee for Preferred Program Providers.

Forsyth

- **Bard Optical**
1351 Hickory Point Dr
20-40% off all eye care products/reduced exam fee for Preferred Program Providers.

Galesburg

- **Appliance Parts & Service Depot**
99 S. Seminary St.
10% off appliances and parts in stock.
- **Bard Optical**
1265 N Henderson
20-40% off all eye care products/reduced exam fee for Preferred Program Providers.
- **Bunker Links Municipal Golf Course**
3535 Lincoln Park Drive
\$20 green fees for 18 holes with cart.
- **Creations by Carolina**
54 S. Seminary St.
10% off alterations to clothing on up to \$50 of alterations. First visit only.
- **Giardina Pontiac Cadillac GMC**
1621 N. Henderson St.
Purchase any in stock new vehicle at the GM supplier price which is several thousands of dollars savings. Must show proof of membership of Corn Belt Energy.

Geneseo

- **Bard Optical**
206 W First St
20-40% off all eye care products/reduced exam fee for Preferred Program Providers.

Gridley

- **Peoples Bank**
325 Center St., PO Box 460
\$25 credit toward opening a new personal or business account. \$100 discount on closing cost for residential mortgage. Limit 1 per household per year. Offer may be withdrawn or amended without notice.

Hudson

- **The Cruise Consultants**
23560 N. 1600 E. Rd.
\$100 off cabin of 7-day cruise or longer.

• **Whitacre's Country Oak Shoppe**

704 S. Broadway
10% off. Sale items excluded.

Jacksonville

• **Bard Optical**

901 W Morton 10B
20-40% off all eye care products/reduced exam fee for Preferred Program Providers.

LaSalle

• **Coon's Grove Nursery, Inc**

359 N 35th Rd
10% off the purchase of any evergreen 6-8ft or shade tree 2-2.5 inches in diameter. Planting & delivery excluded.

Lincoln

• **Bard Optical**

1481 Woodlawn Rd
20-40% off all eye care products/reduced exam fee for Preferred Program Providers.

Mendota

• **Prescott Brothers Inc.-Chrysler, Dodge & Jeep**

614 13th Ave.
New cars & trucks: 1% below factory invoice(Family & Friends program)/\$19.95 for oil change, 15 pt. inspection and choice of wash & wax or tire rotation/10% off MOPAR items.

Morton

• **Ashland House**

201 East Ashland
10% off regular rack rate
Special event dates.

• **Leisure Spas Inc**

911 W Jefferson
15% off all spa chemicals.

• **Pete's Shoe Store**

109 W. Jefferson
20% off Red Wing Work boots.

Mossville

• **Bill's Radiator**

10307 Wheaton Road
10% off parts
Any previously discount parts excluded.

Normal

• **A-1 Security Locksmith**

310 Pine Street
\$5 off service call or locks and deadbolts.
Buy 5 keys and get 1 free.

• **Baird's Auto Care, Inc.**

804 W. Division St.
\$1.50 off full service oil change/10% off repair parts. No discount on labor or warranty parts.

• **Best Western University Inn**

6 Traders Circle
20% off rack rate. Not valid with other discounts. Advanced reservation recommended.

• **Body Dynamics Fitness Equipment**

406 Kays
10% off any equipment or accessory purchase. Does not include weights or sale price items.

• **MidState Transmission Inc.**

1408 Fort Jesse Rd.
\$25 off clutch replacement and automatic transmission rebuild
Not valid with other discounts.

• **Midwest College of Cosmetology**

755 W. Raab Road
15% off any service with member card
Not valid with other discounts.

• **O'Brien Mitsubishi**

1601 Ft. Jesse Rd
Any new vehicle 5% over invoice price amount/Any used vehicle at employee pricing.

• **Papa Murphy's Take n Bake Pizza**

1531 E. College Ave.
\$2 off any regularly priced family size pizza.

• **Signature Inn**

101 S. Veterans Parkway
\$69 room rate on all standard rooms
Offer not valid during special events. All discounts subject to availability.

• **Team Automotive Inc**

1223 S Adelaide St
10% off all parts
Not valid with other discounts or offers.

• **Washburn Flowers**

111 North St
10% on floral products only-cash and carry only. Plants, giftware & month of February excluded.

• **Wild Birds Unlimited**

1520 East College Avenue
20% off any in-stock bird feeder or birdhouse. 1 per family.

• **Wm. Marken Jewelers**

1520 E. College
20% off any merchandise purchase. 25% off Seiko watches. Discount does not apply to repair services.

Pekin

• **Bard Optical**

3287 Court St
20-40% off all eye care products/reduced exam fee for Preferred Program Providers.

• **Sud's Volkswagen, Audi, Mercedes Benz, Porsche**

2350 N. 8th St.
15% off all parts and service.

Peoria

• **Bard Optical**

7720 N. Crestline Dr. & 1200 W. Main St., Suite 21 & 1800 N Knoxville #5 & 4620 N University
20-40% off all eye care products/reduced exam fee for Preferred Program Providers.

Glass Specialty Company

1000 SW Jefferson
\$20 Walmart gift card with auto glass replacement. \$25 off rhino lings where applicable. Does not apply to windshield repairs.

• **Ned Kelly's Steakhouse**

4114 N. Brandywine
Free half onion loaf appetizer or skillet cookie dessert for 2 with purchase of 2 dinner entrees. Not valid with other discounts or offers.

Peoria Heights

• **A Sweet Arrangement**

4709 N. Prospect Road
20% off any single bouquet of candy
Consignment collectibles/Offer not valid for the following periods 12/15-12/25 and 2/1-2/14.

• **Chem-Dry CleanMasters**

1507 Lake #12
15% off carpet and upholstery cleanings over \$100. Serve McLean, Dewitt, Peoria, Tazewell, and Woodford Counties.

Peru

• **Glass Specialty Company**

4115 Progress Blvd
\$20 Walmart gift card with auto glass replacement. \$25 off rhino lings where applicable. Does not apply to windshield repairs.

Pontiac

• **Peoples Bank**

223 N. Mill St.
\$25 credit toward opening a new personal or business account. \$100 discount on closing cost for residential mortgage.
Limit 1 per household per year. Offer may be withdrawn or amended without notice.

Princeton

• **Adler Chiropractic**

403 S. Main St.
10% discount on new patient office visit.

• **Browning Ford Lincoln Mercury**

1502 W. Peru
4 free oil changes and 1 complete detail (\$250 value) with purchase of any new car. All included services by appt. only. Offer must be presented at the time of sale.

• **Hattie's Arts & Antiques**

24 W. Long
10% discount on items over \$20 unless marked Net or Firm.

• **Johnsons Carpet Shoppe Inc.**

1033 N. Main
\$1 off per yard of carpet
Not valid with other sales.

• **McCall Chiropractic Clinic**

105 S. Main, Suite 7
\$10 off an initial examination/consultation. Must present card.
Excludes medicare patients.

• **O'Reilly Auto Parts**

1504 N. Main St.
\$.99 for the following O'Reilly chemicals: ORC 72142 (fueling and carb cleaner); ORC 72152 (gas treatment); ORC 72717 (oil treatment); ORC 72813 (power steering fluid). 1 per customer per visit.

• **Wyant Carpet**

816-818 N. Main St.
Say "Corn Belt" and receive up to 10% off. Not valid with other discounts.

Springfield

• **Bard Optical**

3141 S Veterans Pkwy
20-40% off all eye care products/reduced exam fee for Preferred Program Providers.

(Continued on page 16d)

(Continued from page 16c)

- **Calhoun Carpet**
1701 S. Dirksen Pkwy
10% off any carpet purchase.
- **George Alarm Company**
917 S. 9th St
Switching monitoring systems and we'll beat your existing price by 15%. New system (lease/purchase) 15% discount and 15% off upgrades for existing customers.
- **Ned Kelly's Steakhouse**
3455 Freedom Dr.
Free half onion loaf appetizer or skillet cookie dessert for 2 with purchase of

2 dinner entrees. Not valid with other discounts or offers.

- **Papa Murphy's Take n Bake Pizza**
1712 Sangamon Ave.
\$2 off any regularly priced family size pizza.
- Stanford**
 - **Distinctive Affairs**
202 S. Division Street
Free dessert with rehearsal dinner.
- Sterling**
 - **Bard Optical**
3215 E Lincoln Way
20-40% off all eye care products/reduced exam fee for Preferred Program Providers.

Urbana

- **Ned Kelly's Steakhouse-Urbana**
1601 N. Cunningham
Free half onion loaf appetizer or skillet cookie dessert for 2 with purchase of 2 dinner entrees. Not valid with other discounts or offers.

Utica

- **Apple Tree Acres Alpacas**
3037 E 11th Road
10% on all alpaca apparel.

Washington

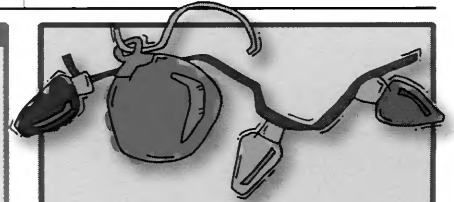
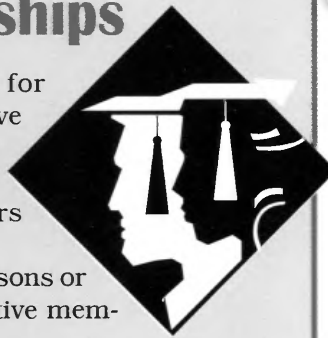
- **Bard Optical**
#8 Cherry Tree Shopping Center
20-40% off all eye care products/reduced exam fee for Preferred Program Providers

January 1 Deadline for IEC Scholarships

Time is running out to apply for the Illinois Electric Cooperative (IEC) Memorial Scholarship Program. Five-\$1,250 scholarships will be awarded to high school seniors in 2006.

- Three scholarships will be won by sons or daughters of Illinois electric cooperative members.
- One scholarship will be awarded to a son or daughter of any Illinois electric cooperative employee or director.
- A fifth scholarship is reserved for a son or daughter of a member, employee, or director and is to be used at a two-year Illinois community college.

Information about the IEC Scholarship Program has been distributed to area high schools. For further details, please visit www.cornbeltenergy.com or call (800) 879-0339, Ext. 250.



Happy Holidays From Corn Belt Energy

Our offices will be closed on Friday, December 23, Monday, December 26, and Monday, January 2, to allow our employees to enjoy the holidays with their families.

In the event of an electrical emergency, please phone (800) 879-0339.

OUTAGE REPORT

The following outages affected more than 100 members. Please see our Web site at www.cornbeltenergy.com for a complete list of substation and feeder outages.

DATE	TIME	MEMBERS	AREAS AFFECTED	REASON FOR OUTAGE
09/18/05	6:24 p.m. - 8:10 p.m.	230	Lexington and Chenoa areas	Line fuse outage
09/19/05	4:15 p.m. - 5:00 p.m.	378	Maroa, Kenney & Warrensburg areas	AmerenIP transmission failure
09/19/05	4:15 p.m. - 5:35 p.m.	548	Wapella, Clinton & Heyworth areas	AmerenIP transmission failure
09/19/05	5:16 p.m. - 6:20 p.m.	1557	South and East Bloomington & Downs areas	Lightning hit Gillum substation
09/21/05	9:40 a.m. - 10:10 a.m.	1631	Normal, Danvers & west Bloomington areas	AmerenIP transmission failure
09/27/05	4:28 a.m. - 7:30 a.m.	189	Wyand area	Wire down
10/16/05	5:00 p.m. - 5:54 p.m.	164	Brookridge Apt., Bloomington	Bird caused line fuse outage

CORN BELT ENERGY CORPORATION, BLOOMINGTON, ILLINOIS