

# Shelby Electric News

SHELBY ELECTRIC COOPERATIVE

217-774-3986

SHELBYVILLE, ILLINOIS

*Your Total Energy Supplier*

## Across the Manager's Desk

By Jim Coleman



## Deregulation and your electric cooperative

Recently, there has been much media attention focused on electric utility deregulation. Therefore, I would like to take this opportunity to comment on a few issues. You have most likely heard the promises regarding what competition will do for your electric rates. These claims usually talk about huge rate reductions in a very short period of time. Claims such as these should be viewed with caution.

Shelby Electric Cooperative, and all other electric cooperatives like it, were first formed 60 years ago because the large investor-owned utility companies did not consider rural areas to be a viable investment. The only difference between now and then is that a few commercial businesses, which look quite attractive to the investor - owned utilities, have settled in our area. Let me emphasize that it is the industries and large power users that look attractive to the other utilities and not necessarily the small residential user.

So when you hear these claims of lower rates, I would like you to pause a moment and consider the source. I hope that you will remember that Shelby Electric Cooperative is your cooperative. It is a not-for-profit electric utility that is here to serve you. *Our mission is to provide safe, reliable electricity and service at a reasonable cost - not to put profits into the pockets of investors.* Shelby Electric Cooperative is run by Directors that are elected by you, to represent your interests. Directors are members of this cooperative just like you.

Over the past year, your Board of Directors and myself have made our position on deregulation and competition clear. The guiding prin-

ciples that Shelby Electric Cooperative and all but one other Illinois cooperative have adopted are flexible and meet the needs of not only this cooperative but all other electric cooperatives across the state.

Our position on electric utility deregulation in Illinois has been:

- We support deregulation legislation - as long as it benefits you and your fellow members.
- We support the right of any electric cooperative to engage in competition — at its own discretion.
- We believe that the Electric Supplier Act, which prevents duplication of electric facilities, is a valuable statute which should not be changed. The act guards against needless adverse environmental action, protects farmland from unnecessary confiscation and avoids other undesirable social costs.
- And perhaps most significantly, we strongly support the right of member — owners to continue to be the guiding force behind their electric cooperative.

One Illinois electric cooperative did propose legislation that would have forced all electric cooperatives to become involved in competition on that particular cooperative's terms and timetable. While all of the other electric cooperatives in Illinois respect the right of that cooperative's board to do what is best for its membership, we also believe that the board members that you elect at your cooperative should be the ones making the decisions that affect your cooperative.

Personally, as your manager, I think that our cooperative membership, through the member — elected and controlled Board of Directors, is in the best position to determine the future for Shelby Electric Cooperative. This local approach has been advocated by our statewide trade organization, the Association of Illinois Electric Cooperatives, as well as 41 municipal utility systems, and was agreed to by all parties in the debate which took place in the spring of 1997. The local control, self regulation language for electric cooperatives and municipal utilities was incorporated in Article XVII of Illinois Senate Bill 55, the deregulation legislation which was passed by the Illinois House in the General  
(continued on page 16b)

# Five easy ways to make your home safer

Take a few minutes for safety every day. Here are five ways to get you started and make your home electrically safe:

- Put safety covers on unused wall outlets so children can't explore the outlets with tiny fingers. Replace any broken wall plates.
- If cords are frayed or cracked, replace them. Never nail or staple cords to the wall or floor. And keep furniture off

the cords — even if they're hiding under the carpet.

- Extension cords are meant to be used temporarily. It's not safe to use them as permanent household wiring.
- Use three-prong plugs in three-prong outlets. Never cut the third prong off to fit it into a two-prong outlet. And don't force plugs into outlets if they don't fit easily. You can start a fire that

way or get a shock.

- Install ground-fault circuit interrupters in bathrooms and kitchens. They help prevent electrocutions where electricity and water might meet.

Do you have questions about electrical safety? Please call Shelby Electric Cooperative. As your member-owned electric utility, we will be glad to help you protect your home and family.

(continued from page 16a)

Assembly's spring session in 1997. More recently, as this legislation was debated and approved in the General Assembly's fall session, the same language of local control and self regulation was maintained in its original form in House Bill 362. Governor Jim Edgar is expected to sign the legislation into law sometime before the middle of January if not sooner.

Deregulation, at least in theory, should benefit everyone. However, that has not always been the case. For example, I think that most everyone would agree that the rates and the costs of telephone service, especially for residential users, did not come down when that industry was deregulated. The bills just got more complicated. A deregulated airline industry was supposed to bring down the price of airline tickets and it did for those who travel from one large city to another large city. Those people who want to fly from Decatur to Chicago or

from Springfield to St. Louis often will find that no flight is available and if it is they will pay more for the short trip to the big airport than they will pay for the trip between two large airports. If a deregulated electric utility industry brings about lower rates for large power users and those living in the city at the expense of rural users, an injustice has been done.

Even before electric utility deregulation began to be debated in Illinois, Shelby Electric Cooperative was seeking ways in which to lower our electric rates. Efforts to assist our wholesale power supplier, Soyland Power Cooperative, in restructuring its debt have been successful. Consequently, Soyland Power Cooperative is moving into a better financial situation which will allow it to offer its members a better wholesale rate. At the 1997 Annual Meeting which was held last June, I told you that we were hoping to possibly provide our members with a rebate in-

stead of a rate reduction sometime within the year. I am pleased to announce that a rebate in the amount of \$25 per member will be applied to January 1998 bills. Seasonal accounts will not be eligible for the rebate.

Ultimately, everything about this cooperative is for you, about you and controlled by you. I am proud of that and I am pleased that it can stay that way. The electric utility legislation that has been approved makes it possible for you, through the member-elected Board of Directors, to decide what is the best course of action for Shelby Electric Cooperative to take as the electric utility industry changes not only in Illinois but throughout the entire nation. You will be able to maintain local control and that will help to make sure that everyone is treated fairly and that no one benefits at the expense of another. After all, isn't that the cooperative way?

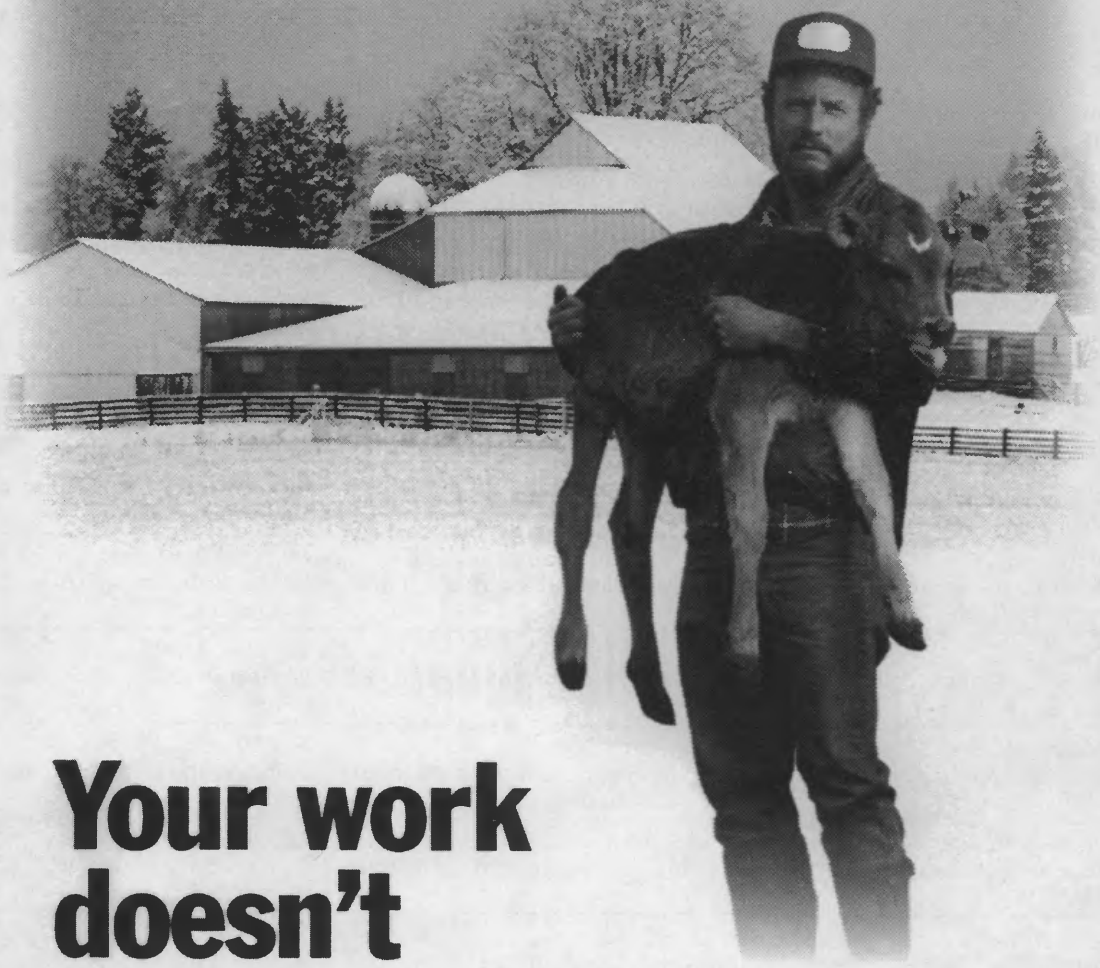
## 1998 holiday office closings

Thursday, Jan. 1	New Year's Day	Wednesday, Nov. 11	Veteran's Day
Friday, April 10	Good Friday	Thursday, Nov. 26	Thanksgiving Day
Monday, May 25	Memorial Day	Friday, Nov. 27	Thanksgiving Holiday
Friday, July 3	Independence Day	Thursday, Dec. 24	Christmas Eve
Monday, Sept. 7	Labor Day	Friday, Dec. 25	Christmas Day

## October outage report

### September 24, 1997 through October 24, 1997

9/24 - 9:00 a.m. Velma Sub, primary underground went bad, off 4.75 hours.	10/8 - 8:06 p.m. Velma Sub, transformer failed, off 3.5 hours.	10/17 - 8:30 a.m. Neoga Sub, cutting over line, off .5 hours.
9/28 - 7:08 a.m. Elwin Sub, birds took out transformer, off 1.5 hours.	10/8 - 9:21 p.m. Moweaqua Sub, vine on a transformer pole, off 3.5 hours.	10/17 - 8:53 p.m. Johnston Sub, bad hot wire clamp, off .75 hours.
9/27 - 5:00 p.m. Taylorville Sub, truck hit a pad mount transformer, off 3 hours.	10/8 - 9:33 p.m. Wenonah Sub, transformer came loose, off 2.5 hours.	10/17 - 9:50 p.m. Yantisville Sub, loose connection on transformer, off 1 hour.
9/29 - 12:20 p.m. Shelbyville Sub, members own wiring, off .75 hours.	10/10 - 6:30 a.m. Moweaqua Sub, broken conductor, off 2 hours.	10/18 - 11:43 a.m. Neoga Sub, concrete truck knocked down a pole and lines, off 4.5 hours.
9/29 - 2:03 p.m. Velma Sub, broken conductor, off 2 hours.	10/11 - 1:21 p.m. Shelbyville Sub, trees, off 1.5 hours.	10/18 - 1:30 p.m. Velma Sub, animal, off 1.75 hours.
10/3 - 10:00 a.m. Velma Sub, member's breaker tripped, off .5 hours.	10/11 - 9:12 a.m. Velma Sub, combine hit pole, off 1.75 hours.	10/18 - 2:16 p.m. Wenonah Sub, members wiring, off 1.25 hours.
10/3 - 11:00 a.m. Yantisville Sub, phase and neutral torn down, off 1 hour.	10/11 - 12:58 p.m. Velma Sub, members wiring, off 3.75 hours.	10/18 - 2:41 p.m. Neoga Sub, transformer failed, off 2.5 hours.
10/4 - 6:08 a.m. Yantisville Sub, broken conductor, off 1.5 hours.	10/12 - 6:07 a.m. Velma Sub, bad underground, off 5.5 hours.	10/19 - 12:25 a.m. Wenonah Sub, line down, off 2 hours.
10/3 - 9:23 p.m. Taylorville Sub, tree limbs on line, off 2.25 hours.	10/12 - 4:19 p.m. Wenonah Sub, tail burnt off regulator, off 4 hours.	10/19 - 7:52 a.m. Velma Sub, bird, off 2 hours.
10/4 - 12:16 p.m. Velma Sub, broken conductor, off 1.25 hours	10/13 - 4:34 a.m. Blue Mound Sub, animal, off 1 hour.	10/20 - 3:00 p.m. Dunkel Sub, stinger welded to transformer, off 1 hour.
10/4 - 8:24 a.m. Blue Mound Sub, fuse on transformer blew, off 1.75 hours.	10/13 - 7:55 a.m. Pana Sub, trees, off 2 hours.	10/21 - 10:38 p.m. Elwin Sub, something got into phase, off 2.5 hours.
10/5 - 8:49 a.m. Blue Mound Sub, service wire to house fell down but didn't break, service was never off.	10/13 - 9:55 a.m. Taylorville Sub, trees, off 1 hour.	10/22 - 6:50 a.m. Neoga Sub, trees, off .75 hours.
10/5 - 9:30 p.m. Taylorville Sub, line down, off 1.5 hours.	10/13 - 11:55 a.m. Velma Sub, miscellaneous, off 6.75 hours.	10/22 - 9:10 a.m. Neoga Sub, members wiring, off 1 hour.
10/7 - 9:27 p.m. Moweaqua Sub, members wiring, off 1.5 hours.	10/13 - 8:02 p.m. Neoga Sub, line down, off 1.75 hours.	10/22 - 1:45 p.m. Velma Sub, tractor hit pole, off 1 hour.
10/7 - 7:13 p.m. Elwin Sub, broken bushing on transformer, off 2.5 hours.	10/14 - 6:35 a.m. Neoga Sub, members underground, off 1 hour.	10/22 - 6:52 p.m. Yantisville Sub, members wiring, power never was off.
10/7 - 5:43 p.m. Elwin Sub, CIPS had a breaker malfunction, off .25 hours.	10/14 - 9:10 p.m. Yantisville Sub, members wiring, off 1.25 hours.	10/22 - 6:15 p.m. Velma Sub, animal, off 1 hour.
10/8 - 8:15 a.m. Yantisville Sub, transformer failed, off 1.5 hours.	10/14 - 6:16 a.m. Velma Sub, primary underground went bad, off 3.5 hours.	10/24 - 9:30 a.m. Lakewood Sub, bird, off .5 hours.
10/8 - 8:20 a.m. Richland Sub, members wiring, off 2.5 hours.	10/15 - 1:10 p.m. Wenonah Sub, line down, off 1.25 hours.	
10/8 - 2:05 p.m. Moweaqua Sub, trees, off 1.25 hours.	10/17 - 5:20 a.m. Elwin Sub, unknown, off 1 hour.	



# Your work doesn't stop in winter.

**Neither does ours.**

At CHANNEL EARTH, we know that what you do in the winter months is just as important as what you do during planting and harvesting seasons. That's why we're the first source for year-round agricultural news that affects you most. We'll help you get a jump on next season with all the information you need to make the right business decisions. Whether it's technology changes, developments on Capitol Hill, or the latest commodities news, CHANNEL EARTH is always at work. Just like you. Call today to subscribe.



**CHANNEL EARTH**



# Shelby Electric News

SHELBY ELECTRIC COOPERATIVE 217-774-3986 SHELBYVILLE, ILLINOIS  
*Your Total Energy Supplier*

## Service restoration and priorities

One never knows for sure what the weather will do from one day to the next. In fact, it can change significantly in a matter of minutes. Shelby Electric Cooperative covers parts of nine counties and it has seventeen substations which serve approximately 9,000 members. When severe weather occurs it can cause a number of power outages for a variety of reasons. Trees can be blown down or sometimes will break when snow and ice become too heavy for the branches to bear. Ice on the lines can cause them to break. Sometimes the effects of severe weather will not show up for weeks or months. For example, ice can weaken the lines and it can also damage hardware. However, the damage may not be noticeable right away. Sub-zero temperatures and high winds can also have quite an impact on the system.

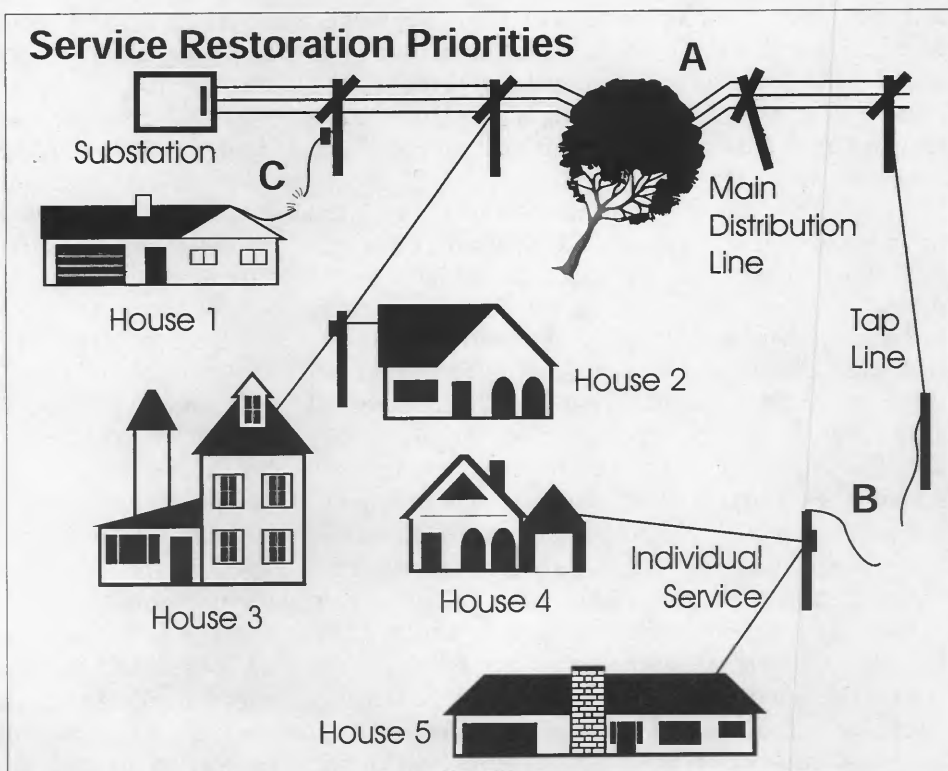
We do not like power outages any better than you do and we spend a considerable amount of time and money in an effort to reduce the potential for outages. Nonetheless, outages can and do occur and we try to be prepared by making sure that we have an adequate supply of poles, transformers, conductor, insulators and hardware on hand. In the event that a major storm occurs, we want to restore your power as soon as possible and we do not want to waste time trying to locate needed materials. Our crews are on call 24 hours a day, 365 days a year and they are ready to serve you when the power goes off no matter what the weather conditions may be. In the event that a considerable amount of damage occurs to the system, we can call upon

other cooperative crews to assist us in restoring your power as soon as possible.

You may wonder how we determine who has their power restored first. Our policy for restoring service is as follows: we will make the necessary repairs to restore service to critical loads and to areas that will affect the greatest number of members in the shortest period of time. After almost 60 years in the electric utility business, this policy has proven to be the most logical, most economical, and most accommodating method used in restoring service to our members. This method is also used by virtually every other electric utility in the nation.

The diagram above illustrates the manner in which service would be restored in the event that a tree fell through a three-phase circuit a couple of miles down the road from a substation. This circuit runs for miles through the countryside. Multiple single phase tap lines come

*(continued on page 16b)*



# Don't let your dishwasher flush \$\$\$ down the drain

Add up how much electricity all those appliances in your home use, and pretty soon you're talking real money on your electric bill. Your dishwasher is no exception.

About 80 percent of the energy used by a dishwasher is for hot water, not for electricity to run the motor. So, U.S. Department of Energy (DOE) recommends doing the following to make your dishwasher more cost effective.

- Check the owner's manual for the recommended water temperature. Many have internal heating elements that will allow you to lower the temperature if it is set too high.

- Scrape, don't rinse, large pieces of food and bones from dishes. Soak or prewash only

when there is burned-on or dried-on food.

- Fill your dishwasher before each use — but don't overload.

- Do not use the "rinse hold" on your machine for just a few soiled dishes. This setting uses three to seven gallons of hot water.

- Let your dishes air-dry instead of using the heat-drying option.

- Relax and enjoy the convenience of having a dishwasher because dishwashers use less water than hand washing — about six gallons less per load. Dishwashers also do a better job of killing germs because they use hotter water than you would use with hand washing.

## *(continued on page 16a)*

off of the three individual phases and carry electricity to farms and homes in a given area. The tree has broken all three phases and the OCR's (breakers) at the substation have operated causing this entire circuit to be de-energized.

Once the crews have determined the source of the problem, which in this case is a tree that fell through all three phases of the circuit, they will begin to make the necessary repairs to restore service. After the lines are dead and grounded, the tree will be cleared and the lines will be spliced back together. Broken cross arms and insulators will be replaced. If a pole is cracked or broken a new one will have to be framed and set. The lines will then be raised and put back onto the cross arms. Slack from the splices will be removed and the lines will be tied back onto the insulators. When the repairs to the three phase circuit are completed, linemen will energize the circuit.

The line serving the subdivision represented by houses 2 and 3 did not sustain any damage. Therefore, after the three phase circuit is repaired and energized, this subdivision would have its power restored. Crews would then patrol each single phase tap in an effort to see if there was additional damage. Damage is found at house 1 which represents a single family dwelling and also at the tap line serving houses 4 and 5. Repairing the damage to the line serving houses 4 and 5 will benefit more members than if the damage at house 1 was repaired. Thus, repairs to the single phase line represented by houses 4 and 5 would be made first. Finally, the crews will return to house 1 to repair the secondary wires serving it. Assuming that the substation has not lost the power it receives from the transmission lines, all of the members served by the circuit outlined above

would then have their power restored.

It should be noted that a complete restoration of power cannot be achieved sometimes due to the fact that a transmission line owned by another utility has not been repaired. Shelby Electric Cooperative crews have been known to assist other utility companies with repairs to their transmission lines so that power to our substation could be restored much sooner than it would be without our assistance.

When an outage occurs, we want to encourage you to contact us at (217) 774-3986 or (800) 677-2612. However, before you call, be sure to check your own breakers or fuses and also check with your neighbors to see if they have lost their power. If it appears that the problem is not related to your own wiring, then be sure to contact us. We would appreciate it if you had your account number ready when you do call. With the monitoring equipment that we have in our substations, we can tell from the office in Shelbyville if a circuit is out of service. Nonetheless, if you are served by a single phase tap line that has incurred isolated damage or an equipment malfunction, we may not be aware of the problem until you call us. It is also possible that you may have seen something happen that will assist our crews in getting your service restored sooner than they would if you had not called.

We hope and pray that we will not experience severe weather and consequently the damage that often comes with it this winter. But if we do, you can be sure that our crews will do their very best to restore your service as soon as possible. No matter what time of day or night it is and no matter how bad the weather may be, you can count on Shelby Electric Cooperative to give you the service that you deserve.

## Outage report — 10/25/97 through 11/23/97

10/25 - 1:36 p.m.  
Pana Sub, unknown, off 2.5 hours.  
10/25 - 12:20 a.m.  
Yantisville Sub, blown fuse, off 1 hour.  
10/26 - 12:30 p.m.  
Taylorville Sub, tail burnt off, off 2 hours.  
10/26 - 1:40 p.m.  
Shelbyville Sub, bad underground, off 3.5 hours  
10/26 - 1:42 p.m.  
Richland Sub, tail burnt off, off 1.5 hours.  
10/26 - 3:40 p.m.  
Lakewood Sub, loose connection, off 1.5 hours.  
10/26 - 3:31 p.m.  
Neoga Sub, animal or bird, off 1.25 hours.  
10/28  
Shelbyville Sub, blown fuse, off 1 hour.  
10/29 - 7:45 a.m.  
Dunkel Sub, sub fuse blown, off 1 hour.  
10/29 - 12:40 p.m.  
Yantisville Sub, bad transformer, off 1.25 hours.  
10/29 - 4:20 p.m.  
Yantisville Sub, farmer hit guy wire w/tractor,  
off 3.5 hours.  
10/31 - 4:20 p.m.  
Lakewood Sub, someone hit guy wire/broke pole,  
off 1 hour.  
11/1 - 9:10 a.m.  
Moweaqua Sub, someone snagged the neutral  
and it broke.  
11/1 - 4:03 p.m.  
Moweaqua Sub, leaning pole, off 1.25 hours.  
11/1 - 10:28 p.m.  
Shelbyville Sub, house fire, disconnected.  
11/2 - 4:16 p.m.  
Lakewood Sub, leaning pole, off 1 hour.  
11/2 - 5:06 p.m.  
Neoga Sub, members own wiring, off .5 hours.  
11/4 - 4:46 p.m.  
Neoga Sub, unknown, off 1 hour.  
11/5 - 11:10 a.m.  
Moweaqua Sub, animal, off 1.75 hours.  
11/5 - 4:18 p.m.  
Neoga Sub, members own wiring, off 1 hour.  
11/6 - 2:15 p.m.  
Pana Sub, trees, off 1.5 hours.  
11/7 - 7:50 a.m.  
Dunkel Sub, members own wiring, off 2 hours.  
11/7 - 10:15 a.m.  
Dunkel Sub, members own wiring, off .5 hours.  
11/8 - 10:10 a.m.  
Neoga Sub, member cut tree and limb fell on  
line, off 1 hour.  
11/8 - 2:57 p.m.  
Neoga Sub, members own wiring, off 1.5 hours.  
11/9 - 2:30 p.m.  
Velma Sub, farmer hit pole w/tractor, off 2.75  
hours.  
11/10 - 4:47 a.m.  
Taylorville Sub, blown fuse, off 1.75 hours.  
11/10 - 11:40 a.m.  
Blue Mound Sub, hole in transformer, off 1  
hour.  
11/10 - 1:40 p.m.  
Blue Mound Sub, loose connection, off 1 hour.  
11/12 - 8:30 a.m.  
Richland Sub, planned outage to change out  
pole, off .75 hours.  
11/12 - 1:45 p.m.  
Yantisville Sub, planned outage to change out  
broken pole, off .5 hours.  
11/12 - 11:01 p.m.  
Yantisville Sub, fire, disconnected.  
11/13 - 10:45 a.m.  
Neoga Sub, bad underground, repairs to be done  
later.  
11/13 - 5:53 p.m.  
Yantisville Sub, car hit pole, off 1.5 hours.  
11/13 - 11:01 p.m.  
Neoga Sub, tree, off 3.5 hours.  
11/15 - 12:04 a.m.  
Wenonah Sub, broken conductor, off 1.75 hours.  
11/15 - 9:23 a.m.  
Richaldn Sub, car hit pole, off 2 hours.  
11/15 - 10:39 p.m.  
Wenonah Sub, broken conductor, off 3 hours.  
11/21 - 9:09 p.m.  
Crest Sub, blown fuses, off 1 hour.  
11/22 - 7:52 a.m.  
Neoga Sub, blown fuse, off 1.25 hours.

**If you're interested in propane  
Call Shelby Energy  
(217) 774-2311  
or 1-800-677-2612**

# Still Think There's Nothing On TV?

## THINK AGAIN!

A&E • American Movie Classics • America's Health Network • Animal Planet •  
 BET • Bloomberg Information TV • Bravo • Cartoon Network • Channel Earth •  
 Classic Sports Network • CNBC • CNN • CNNInternational/CNNfn • Country  
 Music Television • Court TV • C-SPAN • C-SPAN2 • Direct Ticket Movies •  
 Discovery Channel • The Disney Channel (East) • The Disney Channel (West) • E!  
 Entertainment Television • Empire Sports Network • Encore1 (East) • Encore1  
 (West) • Encore2 Love Stories • Encore3 Westerns • Encore4 Mystery • Encore5  
 Action • Encore6 True Stories • Encore7 WAM! • ESPN • ESPN2 • The Family  
 Channel • FOX News Channel • FOX Sports Arizona • FOX Sports Midwest •  
 FOX Sports Northwest • FOX Sports Pittsburgh • FOX Sports Rocky Mtn. • FOX  
 Sports South • FOX Sports Southwest • FOX Sports West • FOX Sports West II •  
 The Golf Channel • Headline News • The History Channel • Home & Garden  
 Television • Home Shopping Network • Home Team Sports • Independent Film  
 Channel • The Learning Channel • Madison Square Garden • Midwest Sports  
 Channel • MLB Extra Innings • MSNBC • MuchMusic • The Nashville Network •  
 New England Sports Network • NewSport • Newsworld International • NBA  
 League Pass • NFL Sunday Ticket • NHL Center Ice • Outdoor Life • Pro-Am Sports  
 System • QVC • Romance Classics • Sci-Fi Channel • Speedvision •  
 SportsChannel-Chicago • SportsChannel-Cincinnati • SportsChannel-Florida •  
 SportsChannel-N.E. • SportsChannel-New York • SportsChannel-Ohio •  
 SportsChannel-Pacific • SportsChannel-Philadelphia • Sunshine Network •  
 Superstation TBS • STARZ! (East) • STARZ! (West) • STARZ!2 (East) • STARZ!2  
 (West) • TNT • TRIO • Trinity Broadcasting Network • Turner Classic Movies •  
 TV Food Network • USA Network • The Weather Channel • WGN



**DIRECTV**  
SATELLITE TV AT ITS BEST

Documentaries. Educational features. Music. Cartoons. News. Movies. Sports. Family entertainment. Shopping. Religious programming. Home improvement. Cooking. Science fiction. Gardening. Criminal justice. Weather. Government. Theatre. Health. Fitness. Agriculture. Hollywood. The Internet. These are just a few of the thought-provoking things you will find on DIRECTV and its 200 channels of quality programming. Check it out!  
**Want TV worth watching? It's got to be DIRECTV.**

Shelby Electric Cooperative  
 P.O. Box 560 • Shelbyville, IL 62565  
 (800) 677-2612 or 774-3986  
 Hours: 7:30 a.m. - 4:30 p.m.

DIRECTV and DSS are official trademarks of DIRECTV, Inc., a unit of Hughes Electronics Corp. ©1997 NRTC.



# Shelby Electric News

SHELBY ELECTRIC COOPERATIVE

217-774-3986

SHELBYVILLE, ILLINOIS

Your Total Energy Supplier

## New law helps consumers fix errors on credit reports

It may be human to err. However, if there are detrimental errors on any of your credit reports, you need to fix them — *immediately*. A bad mark on a credit report can cause big problems when you want to buy a car or house, obtain a business loan or even rent an apartment.

But the Council of Better Business Bureaus has good news for consumers. Recent changes to the Fair Credit Reporting Act (FCRA) give consumers new power to fix credit report errors. New responsibilities have been imposed on the credit reporting agencies and business that give them information. If you dispute an entry in your file, the creditor now must do several things: 1) conduct an investigation; 2) review all relevant information; and 3) report inaccurate or incomplete information to all national credit bureaus. In addition, credit bureaus must now send all relevant evidence you give them about a disputed entry to the furnisher of the information.

FCRA changes also impose new requirements

on the credit bureaus concerning file information that is disputed by the consumer. For the first time, credit bureaus must consider and transmit to the furnisher all relevant evidence submitted by the consumer.

Credit reporting agencies now have a 30-day limit to resolve a consumer's dispute. Once information is deleted, the credit bureaus can no longer reinsert it unless the entity supplying the information certifies that the item is complete and accurate. In addition, the credit bureau must notify you within five days.

Obtain copies of your credit reports yearly. By law, information can remain on a credit report for up to seven years (bankruptcy information up to 10 years).

For information on how to obtain copies of your credit reports, contact the Council of Better Business Bureaus, 4200 Wilson Blvd., Arlington, VA 22203. Telephone (703) 276-0100; Fax (703) 525-8277. Visit their web site at [www.bbb.org](http://www.bbb.org).

## Outage report —11/24/97 through 12/28/97

11/24 - 10:10 a.m.  
Lakewood Sub, blown fuse on cut-out, off 1.25 hours.  
11/30 - 2:09 a.m.  
Shelbyville Sub, car hit guy wire, off 2.25 hours.  
12/7 - 12:30 a.m.  
Yantisville Sub, car hit pole, off 2.0 hours.  
11/25 - 6:17 p.m.  
Elwin Sub, transformer blew up, off 1.75 hours.  
11/30 - 5:35 a.m.  
Crest Sub, unknown, off 1.0 hours.  
12/12 - 10:45 a.m.  
Velma Sub, animal, off .75 hours.  
11/25 - 8:18 p.m.  
Shelbyville Sub, loose connections, off 1.25 hours.  
11/30 - 8:50 a.m.  
Neoga Sub, misc., off 1.75 hours.  
12/16 - 12:50 p.m.  
Blue Mound, blown fuse, off 1.75 hours.  
11/26 - 11:00 a.m.  
Moweaqua Sub, animal, off .75 hours.  
11/30 - 10:48 a.m.  
Velma Sub, animal/tree limbs, off 3.25 hours.  
12/19 - 7:30 a.m.  
Elwin Sub, hot line clamp burnt off, off .75 hours.

11/26 - 4:40 p.m.  
Johnson Sub, members own wiring, off .75 hours.  
11/30 - 6:34 p.m.  
Velma Sub, tree limb, off 1.25 hours.  
12/21 - 12:22 p.m.  
Taylorville Sub, blown fuse, off 3.0 hours.  
11/27 - 11:42 a.m.  
Neoga Sub, fire.  
11/30 - 8:39 p.m.  
Neoga Sub, triplex burnt, off 1.75 hours.  
12/21 - 8:27 p.m.  
Pana Sub, broken conductor, off 1.0 hours.  
11/28 - 2:50 p.m.  
Crest Sub, unknown, off 1.0 hours.  
12/1 - ?  
Lakewood Sub, triplex was down, back on 1:55 p.m.  
12/24 - 11:00 a.m.  
Richland Sub, leaning pole, off 1.0 hours.  
11/29 - 12:47 p.m.  
Velma Sub, bad underground, off 4.0 hours.  
12/6 - 3:22 p.m.  
Neoga Sub, member knocked out transformer, off 1.5 hours  
12/28 - 4:04 p.m.  
Shelbyville Sub, bad underground, off 3.5 hours.

# Good old American ingenuity: The mother of many great inventions

by Suzanne Tate



▲ The Dirt Hog in action: The bin has a capacity to hold a full 8 yards of dirt or dirt-sod combination.

Tony Weishaar of Tony's Welding of rural Shelbyville is a guy that not only possesses ingenuity, but he can take up a challenge and go all the way with it.

One day, one of Tony's customers stopped by and told him of a new tractor-drawn earth leveler he had recently purchased. "Tony, you ought to make one of these yourself" the customer challenged. Tony gave the matter a lot of thought and design. The result is the Dirt Hog brand scraper.

Weishaar explains that most of the work on the machine is done in his welding shop east of Shelbyville, in the slow — time of winter. Tony is quick to say he did not invent the concept or the machine but this model is made from his own design. He says each unit incorporates over 150 man hours. Tony adds that "is probably more of a goal" than realistic figure. "We work on the Dirt



▲ Weighing in at approximately 6500 pounds, the Dirt Hog is mounted on C-130 air transport plane tires.

***One day, one of Tony's customers stopped by and told him of a new tractor-drawn earth leveler he had recently purchased. "Tony, you ought to make one of these yourself," the customer challenged.***

Tony Weishaar explains the hydraulic system he designed for easy greasing and maintenance.

**He says each unit incorporates over 150 man hours. Tony adds that "is probably more of a goal" than realistic figure.**

Tony and helper Tim Shoaff start a new unit for the winter of 1998 project.



Hogs when we have the time."

The Dirt Hog is a very practical and helpful addition to a farm or construction equipment fleet. Its main use is to level uneven ground. They are also used in erosion control and for waterway drainage. Weishaar says most farmers already own one half of the system: they have the tractor already in their fleet. The tractor controls the

cutter — it can go as low as 7 inches below the surface. The forced ejection system can dump as deep as 12 inches high. In action, the scraper pulls off dirt or sod and fills the main body of the unit. Eight yards will fill the bin to heaping. The tractor then pulls on to the dump site.

I suppose we have all seen the industrial-sized units at

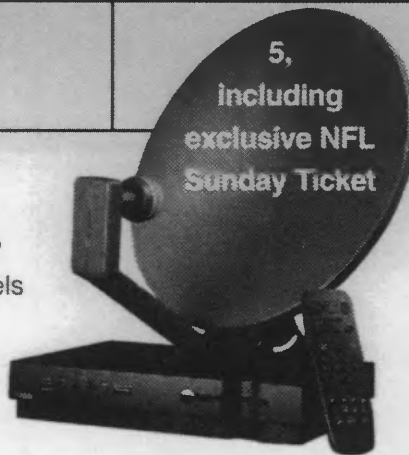
work along the highways and on construction sites. The Weishaar model is built to a legal width to tow down a highway and can easily be moved from site to site. Rigid construction specifications and features are enforced so that every unit will provide years of trouble free service.

If you want to discuss these features and specifications, stop by Tony's shop or give him a call. He is always pleased to talk about his Dirt Hog Scraper; and explain his motto: "I would rather have to charge a little more and have a well-made heavy duty unit than to produce a cheaper less well made unit." And, Tony, I think that statement takes us back to what we said before: there's nothing quite like that American pride and ingenuity!

# Let **DIRECTV** Clear the Air

	<b>Primestar</b>	<b>DISH</b>	<b>DIRECTV</b>
<b>Channels</b>	approximately 160	approximately 112	<b>approximately 200</b>
<b>Movies</b>	10 channels	10 channels	<b>60 channels</b>
<b>Sports Packages</b>	3	1	<b>5, including exclusive NFL Sunday Ticket</b>

Don't know which satellite television service to choose? Only DIRECTV gives you 200 channels of crisp digital picture and sound, more sports packages like the exclusive NFL Sunday Ticket, and more than 60 movie choices every night. That beats any other satellite service, and leaves cable in the dust, too. Compare, and you'll see why 3 million subscribers agree, DIRECTV is the clear choice.



**DIRECTV.**

SATELLITE TV AT ITS BEST

**Shelby Electric Cooperative**  
Monday-Friday  
7:30 a.m. to 4:30 p.m.  
(800) 677-2612  
(217) 774-3986

DIRECTV, and "DIRECTV, Satellite TV at its Best" are official trademarks of DIRECTV, Inc., a unit of Hughes Electronics Corp. © 1998 NRTC.



# Shelby Electric News

SHELBY ELECTRIC COOPERATIVE 217-774-3986 SHELBYVILLE, ILLINOIS

*Your Total Energy Supplier*

## Shelby Electric Cooperative Scholarship program guidelines and criteria

- Two \$1,000 cash scholarships will be awarded each year.
- Both will be awarded to a son or daughter of a Shelby Electric Cooperative member.
- The Applicant must be a high school senior attending an area high school in the cooperative service area; including but not limited to:  
  
Cowden-Herrick, Edinburg, Findlay, First Baptist Christian Academy, Meridian High School, Morrisonville, Central A&M, Neoga, Nokomis, Pana, Shelbyville, Stewardson-Strasburg, Tower Hill, Taylorville, Windsor or Witt.
- Scholarships may be used for educational costs at any two-year or four year accredited college or university in Illinois, including vocational/technical schools.
- Scholarship winners must begin undergraduate studies within a year of being notified that they have won.
- Scholarship winners will be expected to be "full time" students (at least 12 hours).
- Scholarships are for one year and are not renewable.
- Scholarships will be awarded on information contained in this application, and will be judged on a totally anonymous basis. Name and location information will be blocked out for judging.
- Scholarship is awarded by Shelby Electric Cooperative and is not to be confused with a like scholarship sponsored by the electric cooperatives of Illinois.
- Deadline for receipt of completed applications and submissions is April 1, 1998.
- **Scholarship winners will be notified on or about May 1, 1998.**

If you have any questions about the scholarship or application, please contact the Shelby Electric Cooperative offices, North Route 128, Shelbyville, or call (800) 677-2612.



## **Biographical statement:**

Use as much space as you need to write a brief biographical statement that includes your educational goals, financial need, and other pertinent information about yourself that you feel is important.

---

---

---

---

---

---

---

---

---

---

---

---

---

---

---

---

---

---

---

---

---

---

---

---

---

## **Knowledge of electric cooperatives:**

Please submit a short essay of 500 words or less—in your own words—concerning the organization and services of Shelby Electric Cooperative, their activities and operation. The essay should be typed and double-spaced.

### **Statement of applicant and parent or guardian**

“We have examined this application and the records are true, complete and accurate.”

Date: \_\_\_\_\_ Signed: \_\_\_\_\_  
(applicant)

Date: \_\_\_\_\_ Signed: \_\_\_\_\_  
(parent or guardian)

***Deadline for receipt of completed applications is April 1, 1998.***

**Send to:** Shelby Electric Cooperative  
P.O. Box 560  
Shelbyville, IL 62565



# Shelby Electric Cooperative Scholarship Application



Name \_\_\_\_\_

Address \_\_\_\_\_

Telephone Number (\_\_\_\_) \_\_\_\_\_

Date of birth \_\_\_\_\_ Social Security Number \_\_\_\_\_

Name of parent or guardian \_\_\_\_\_

Shelby Electric Cooperative member name \_\_\_\_\_

High school attended \_\_\_\_\_

H.S. grade point average (100 point scale) \_\_\_\_\_

Most recent S.A.T. and/or A.C.T. score \_\_\_\_\_

Work and volunteer experience (List positions held, time period, volunteer or paid)

\_\_\_\_\_

\_\_\_\_\_

\_\_\_\_\_

\_\_\_\_\_

\_\_\_\_\_

Participation in school and community activities—use additional sheet if needed

Organization or activity	No. of years	Office held
_____	_____	_____
_____	_____	_____
_____	_____	_____
_____	_____	_____
_____	_____	_____
_____	_____	_____
_____	_____	_____
_____	_____	_____
_____	_____	_____
_____	_____	_____
_____	_____	_____
_____	_____	_____
_____	_____	_____

# Storms damage more than just poles, lines

As spring approaches, we begin to think of late ice storms, tornadoes, possibly, long outages. Many times when a storm blows into a co-op's service area and wreaks havoc, you hear a lot about material damage and replacement costs. You read about the number of poles broken, the miles of line down, and how many cross arms had to be replaced.

While we dwell on the material costs, they represent only a small portion of the expense such disasters bring.

The real expense is in labor and machinery. If a storm hits and does a lot of damage, we understand that you want your power restored quickly, and call for help. Other co-ops—and sometimes investor-owned utilities and municipals—will send crews to pitch in and restore power. Your co-op does the same, when it's okay and others are in trouble.

But from the time those "borrowed" crews are rousted out of their beds until they wheel back into their home office, we pay.

The trucks they bring are expensive to buy and operate, and we pay for every minute.

The crews work hard, and they work up a hearty appetite while doing it. The receiving co-op pays for their meals. And in the few hours each night when they rest, the co-op also pays for that. It's all part of getting your power back on as quickly as possible.

One of the bigger expenses, is labor. Co-op linemen normally work a 40-hour week. The job is often strenuous and sometimes dangerous, and requires a lot of training. They're paid well, as they deserve to be. When you need to have your power back on as quickly as possible, they work a lot of overtime, and they're paid extra for that.

Lost revenues are another factor. Your co-op budgets for an income based on steady, day-in and day-out operation. A week of lost sales results in about a 25 percent reduction in the monthly money flow, and nobody likes that. Think of it as a week without pay, while you're working harder than ever and your expenses are far more than usual.

With all that adversity and expense, your co-op wants you to know what's going on, and how

much it's going to cost, so it talks to you about damage.

And that's as it should be. You own your co-op. Area leaders built it some 60 years ago when the power companies wouldn't, and your predecessors—early members—paid to have it built. The whole rural electrification program was an exercise in self-help. And the costs were borne by the member-owners, who borrowed money from the federal government at low interest.

You bear the costs, and you deserve to know where the money goes. And that's why your co-op talks of broken poles and downed lines after storms.

So the next time you read about 250 poles being torn down by a storm, and so many miles of line, and a couple hundred cross arms being destroyed, please remember that the cost of replacing them isn't what hurts. What really hurts is the cost of having them put back in place.

It's all part of getting your power back on as quickly as possible. And your co-op (you) will foot the bill.

## Outage report - 12/22/97 through 01/26/98

12/31 - 4:50 a.m.  
Velma Sub, car hit pole, off 1.5 hours.  
(Final repairs 1/2/98).  
1/1 - 11:32 p.m.  
Elwin Sub, bad underground connection at sub, off 3 hours.  
1/2 - 9:30 a.m.  
Velma Sub, planned outage/car hit pole, off 10 minutes.  
1/3 - 9:03 p.m.  
Wenona Sub, animal, off 1.5 hours.  
1/5 - 7:50 a.m.  
Neoga Sub, tree limb, off 1.75 hours.  
1/6 - 11:50 a.m.  
Pana Sub, planned outage/cut in new pole (A-6), off 20 minutes.  
1/7 - 5:13 p.m.  
Blue Mound Sub, triplex burnt, off 1.75 hours.  
1/7 - 9:38 p.m.  
Johnston Sub, transformer blew/bad underground, off .75 hours.  
1/8 - 1:15 a.m.  
Pana Sub, tree/pole broken, off 4.5 hours. (Final repairs 1/9/98).  
1/8 - 4:38 a.m.  
Shelbyville Sub, blown fuse/bad underground, off 4 hours.  
1/8 - 5:25 a.m.  
Johnston Sub, member's wiring, off .5 hours.

1/8 - 9:30 a.m.  
Blue Mound Sub, triplex down, off 1.25 hours.  
1/9 - 9 a.m.  
Richland Sub, planned outage/cut over new line, off 1 hour.  
1/9 - 9 a.m.  
Pana Sub, repair broken pole, off 20 minutes.  
1/9 - 10:20 a.m.  
Velma Sub, loose connection at transformer, off 1 hour.  
1/10 - 12:08 p.m.  
Pana Sub, member overloaded temporary service, off 1.5 hours.  
1/11 - 2:44 p.m.  
Taylorville Sub, loose connections, off 1.5 hours.  
1/13 - 3:50 a.m.  
Neoga Sub, lines down, off 2 hours.  
1/13 - 5:55 a.m.  
Velma Sub, line down, off 2 hours.  
1/13 - 7:10 a.m.  
Wenona Sub, line down, off 1.25 hours.  
1/13 - 10:30 a.m.  
Wenona Sub, Bad insulator, off .25 hours.  
1/13 - 10:30 a.m.  
Dunkel Sub, broken conductor, off 1.25 hours.

1/14 - 2:09 a.m.  
Taylorville Sub, arrester blew, off 1.75 hours.  
1/14 - 6:33 p.m.  
Velma Sub, member's wiring, caused low voltage only.  
1/16 - 8:45 a.m.  
Elwin Sub, moving line/planned outage, off .5 hours.  
1/17 - 10:05 a.m.  
Neoga Sub, line down, off 1.5 hours.  
1/17 - 11:09 a.m.  
Shelbyville Sub, member's wiring, off .75 hours.  
1/18 - 2:03 p.m.  
Shelbyville Sub, member's fuse panel, off 1 hour.  
1/19 - 8:30 a.m.  
Taylorville Sub, loose connection, off 1.25 hours.  
1/21 - 5:23 p.m.  
Pana Sub, line down, off 2.5 hours.  
1/21 - 5:25 p.m. (1/2 power)  
Lakewood Sub, bad triplex, off 2.75 hours.  
1/22 - 6:33 p.m.  
Neoga Sub, trees, off 1.25 hours.  
1/26 - 9:30 a.m.  
Dunkel Sub, planned work/change out pole, off .5 hours.



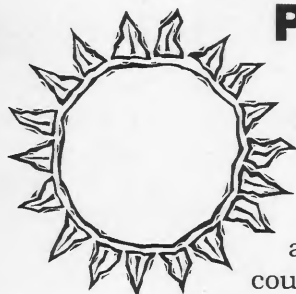
# Shelby Electric News

SHELBY ELECTRIC COOPERATIVE

217-774-3986

SHELBYVILLE, ILLINOIS

*Your Total Energy Supplier*



## Prepare now for Summer

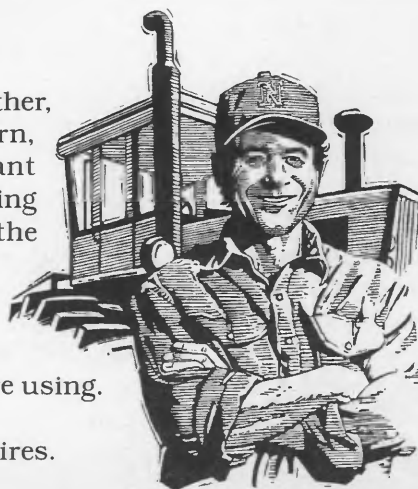
Now is the time to start thinking about what you can do to be better prepared for the summer cooling season. Following are some suggestions that could save you money on your home energy costs.

- Consider planting some trees to shade your home. Trees do a wonderful job of shading your home in the summer. When they lose their leaves in the fall they let the sun shine through to warm your home during the winter months. Trees also add beauty and value to your home.
  - Shade your windows: This can be done several different ways.
    - Install window film. Professionals say adding window film to your windows is the best solution to blocking the sun's intense heat. It can be found in most home center/hardware stores and it is easy to install.
    - Install awnings
    - Don't forget to use window shades, blinds and curtains to your advantage.
  - Install some ceiling fans. Ceiling fans are economical to operate. Furthermore, they are quiet and also very effective at moving air.
  - Install a whole house fan. Use of a whole house fan in the evening, when outdoor temperatures
- are cooler, will substantially reduce your cooling costs. Constant use of an air conditioner will use much more electricity as opposed to a combination of whole house fan and air conditioner. Using a whole house fan instead of an air conditioner will also allow fresh air to enter the home.
  - If you have central air conditioning:
    - Be sure to replace the filter in your furnace with a clean one. A dirty filter can increase the cost of cooling your home as much as 10%.
    - Be sure to clean the condenser coils on the outside a/c unit. If these coils are not clean, the unit will run longer than is necessary.
    - Try setting your thermostat at 78 degrees instead of 72 degrees. If you are willing to endure some of the heat, you can save a considerable amount on your cooling bill.
    - If your central air conditioning unit is over 10 years old, you may want to consider replacing it with a new higher efficiency unit. All units are rated with an E.E.R. (Energy Efficiency Ratio). When selecting a new unit, be sure to choose one with an EER of 11 or higher.
  - Seal and caulk around doors and windows. This will allow you to be more effective at keeping the cooler, conditioned air inside of the house.

## Don't let your guard down

This time of year, details weigh on your mind . . . money, weather, factors vital to your livelihood. The most important concern, though, is safety. Tragedy can occur in that flash of an instant when you let your guard down—taking a short cut, overlooking basic safety rules. To ensure future harvests, always work the safe way.

- Watch out for overhead power lines.
- Wear appropriate protective equipment.
- Make sure helpers are familiar with equipment they are using.
- Shut off power before fixing or unclogging machines.
- Keep extended machinery away from power pole guy wires.
- Keep shields in place.



# Spring is tornado season

Springtime means tornado season. Although tornadoes can occur anytime, peak months are March through August.

There are two types of tornado alerts. A tornado watch means atmospheric conditions are right for a tornado to develop. Stay tuned to news broadcasts for further information. A tornado warning means one has been sighted in the area or will occur.

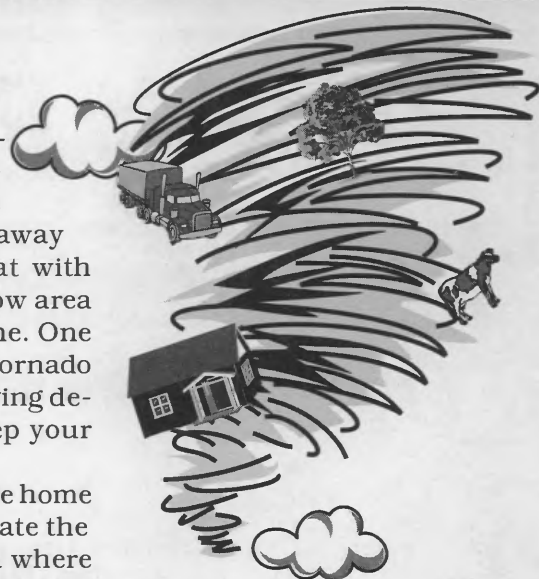
If a warning has been issued, your family should seek shelter immediately. The best shelters are basements or storm shelters. If your home does not have a basement, move to a small room such as a bathroom or closet in the center of the house.

If you are in your vehicle, do

not try to outrun a tornado. If you cannot escape the path of the tornado, stop and get away from the vehicle. Lie flat with your head covered in a low area such as a ditch or a ravine. One of the major causes of tornado deaths and injuries is flying debris, so be sure and keep your head covered.

Do not stay in a mobile home during a tornado. Evacuate the home to find a low area where you can lie down and cover your head. It might be wise to also check rules and regulations concerning "hold-down" equipment for new or used mobile homes.

Your family should have an emergency plan and know exactly what to do if a tornado hits.



Each home should have basic emergency supplies, such as a portable radio, batteries and flashlights on hand in the basement or closet. Being safe is being prepared.

## Money 2000

**Money 2000** is an educational program designed to improve your financial well-being through increased savings and / or reduced household debt. Most of us would like to save some money or at least pay off some debt. For whatever reason, many people find it extremely difficult to save money and even more difficult to pay off debt. Consequently, there are major concerns in today's society over: increasing personal debt, lack of household savings, and a growing number of bankruptcies.

The problem seems to be that we never have enough money. Unfortunately, a significant number of people have found that the more money they have, the more they spend. While having more money may appear to be a solution to money problems, it may not be a realistic solution for the majority of people. A more appropriate solution probably involves learning how to manage what we have. Managing money is not easy and it is hard work. **Money 2000** aims to have a last-



**Cooperative Extension Service**  
University of Illinois at Urbana-Champaign

Helping You Put Knowledge to Work

ing impact on the lives of individuals and households through education and the development of skills which will lead to financial fitness.

The University of Illinois Cooperative Extension Service has formed a partnership with the Treasurer of the State of Illinois and the following financial organizations: Community Bankers Association of Illinois, Illinois Bankers Association, Illinois Credit Union League, and Illinois League of Financial Institutions. This partnership is known as **Money 2000 Statewide Partners**. The **Money 2000 Statewide Partners** will work together in an effort to offer assistance to those individuals who are interested in

learning how to save money and reduce household debt.

The **Money 2000** program has been designed to provide people with ongoing information and tools which will help them to be more effective at managing their money. Participants in **Money 2000** will receive:

- Newsletters with money saving ideas
- Financial management worksheets
- Individual help and support
- and more savings or less debt

Participants will be encouraged to establish their own **Money 2000** goal. Goals are to be completed by Dec. 31, 2000. There is a \$10 subscription fee to pay for the printed materials that will be provided to participants.

For more information about how you can benefit by participating in the **Money 2000** program, please contact your local University of Illinois Cooperative Extension Service office.



## Warning from JULIE

The Illinois One-Call System  
Before you dig call

**(800) 892-0123**

The Service Is Free  
Operatives 24 Hours • 7 Days a Week

### Outage Report

01/26/98 through 02/20/98

1/29 - 4:10 p.m.	Shelbyville Sub, planned work, off 1.5 hours.
Wenonah Sub, bad transformer, off 2 hours.	2/9 - 7:16 p.m.
1/30 - 9:30 a.m.	Yantisville Sub, tail burnt off on clamp, off 1.25 hours.
Wenonah Sub, planned work, off .75 hours.	2/10 - 4:18 p.m.
1/30 - 4:28 p.m.	Shelbyville Sub, blown fuse, off 1 hour.
Taylorville Sub, unknown, off 2 hours.	2/10 - 5:00 p.m.
1/31 - 8:05 p.m.	Yantisville Sub, bad underground, off 2.75 hours.
Shelbyville Sub, house fire, disconnected.	2/13 - 10:05 a.m.
2/2 - 5:27 a.m.	Elwin Sub, planned work, off 1.5 hours.
Shelbyville Sub, unknown, off 1 hour.	2/13 - 10:50 a.m.
2/3 - 11:20 a.m.	Taylorville Sub, planned work, off .75 hours.
Pana Sub, Contractor hit primary underground, off 1.25 hours.	2/13 - 3:10 p.m.
2/3 - 4:23 p.m.	Shelbyville Sub, bad underground, off 2 hours.
Taylorville Sub, care hit pole, off 4 hours.	2/19 - 8:23 p.m.
2/5 - 7:22 a.m.	Wenonah Sub, transformer overload, off 1.5 hours.

### 02/23/98 through 03/20/98

2/24 - 4:49 p.m.	Moweaqua Sub, vehicle hit and broke 2 poles, off 3.5 hours.
Velma Sub, animal knocked line out, off 1 hour.	3/9 - 8:15 a.m.
2/26 - 4:44 p.m.	Taylorville Sub, bad hot line clamp, off 1.5 hours.
Yantisville Sub, members wiring, off 1.25 hours.	3/9 - 12 noon
2/26 - 2:20 p.m.	Lakewood Sub, members wiring, off 1.25 hours.
Owaneco Sub, planned work, off .5 hours.	3/11 - 2:55 p.m.
2/26 - 5:46 p.m.	Velma Sub, broken conductor, off .75 hours.
Wenonah Sub, tree on line, off 2.5 hours.	3/13 - 9:10 a.m.
2/26 - 6:13 p.m.	Yantisville Sub, broken conductor, off 1.25 hours.
Neoga Sub, tree limb, off 1.75 hours.	3/13 - 4:51 p.m.
3/1 - 1:18 p.m.	Yantisville Sub, broken conductor, off 1 hour.
Lakewood Sub, bad primary underground, off 3 hours.	3/14 - 12:30 a.m.
3/4 - 6:50 a.m.	Velma Sub, broken conductor, off 2.75 hours.
Neoga Sub, broken insulator, off 1 hour.	3/14 - 7:25 a.m.
3/5 - 9:40 a.m.	Yantisville Sub, meter base, off 2.5 hours.
Lakewood Sub, members wiring, off .5 hours.	3/16 - 10:40 a.m.
3/6 - 9:25 a.m.	Dunkel Sub, something knocked out transformer, off .75 hours.
Moweaqua Sub, someone cut tree/fell through line, off 1.5 hours.	3/20 - 10:15 a.m.
3/8 - 7:50 a.m.	Yantisville Sub, broken conductor, off 1 hour.
Richland Sub, tail burnt off, off 1.75 hours.	
3/9 - 6:40 a.m.	



# and counting.

Over three million subscribers already know why DIRECTV® is Satellite TV at its Best: it's the fastest growing consumer electronics innovation in history and gives viewers more than over 200 channels. This includes up to 55 pay-per-view choices a night, plus exclusive sports packages like NFL SUNDAY TICKET™. All this and more is delivered through the 18" DSS® dish and adds up to more choice, more variety and more value than any other television service. For a limited time, DIRECTV is available at the best price ever. So call today and join three million highly satisfied viewers. You'll be in very good company.



## **Shelby Electric Cooperative**

Monday - Friday  
7:30 a.m. to 4:30 p.m.  
(800) 677-2612  
(217) 774-3986

DIRECTV, DSS and "DIRECTV. Satellite at its Best" are official trademarks of DIRECTV, Inc., a unit of Hughes Electronics Corp, © 1998 NRTC.



# Shelby Electric News

SHELBY ELECTRIC COOPERATIVE

217-774-3986

SHELBYVILLE, ILLINOIS

*Your Total Energy Supplier*



## 1998 Annual Meeting 60th Anniversary

### Shelby Electric Cooperative

Shelby County 4-H Fairgrounds  
Friday, June 19, 1998

- ☛ Meeting will start at 1 p.m.
- ☛ Complimentary pork chop dinner to be served at 11 a.m.
- ☛ Drawing for prizes after meeting — you must be registered by 1 p.m. to be eligible

**Attendance Prizes, Including —**  
**8 — \$50 “Shelby Electric Dollars”**  
 Shelby Electric Dollars can be used for any  
 Shelby Electric Service provided

**\*\*\*Entertainment prior to meeting\*\*\***

Featuring: 60th Anniversary Video — “Past, Present & Future”

- Health Fair
- Electric Safety Exhibit
- Children’s ID Program

**Grand Prize**  
**\$250 “Shelby Electric Dollars”**



a Touchstone Energy<sup>SM</sup> partner



## Shelby Energy Company

Shelby Energy Company can assist you with all your Liquid Propane (LP) gas needs. No matter if you have a commercial, industrial, agricultural, residential or a motor fuel account, you can count on the professional staff of Shelby Energy Company to provide the best service to your account.

Shelby Energy Company offers *gas contracts* whereby a customer can lock in a summer rate on LP gas and has that price guaranteed up through March of the following year. *Budget billing* is also available to help a person avoid those large bills when a tank is filled.

Customers can choose to use their own tank if they have one or they can lease a 500 gallon above ground tank for \$1 a year. If a customer prefers, they may also purchase an above ground tank or an underground tank.

Shelby Energy Company provides its customers with emergency service 24 hours-a-day, 365 days-a-year. If a customer has a concern about their LP gas system, they should not hesitate to contact their supplier. You can count on Shelby Energy Company to be there for you.

Shelby Energy Company services accounts within the Cooperative service area. However,

you do not have to be a member of Shelby Electric Cooperative to take advantage of competitive prices and great service. If you are a member of Shelby Electric Cooperative, you can help yourself by making Shelby Energy Company your LP gas supplier. Doing business with Shelby Energy Company does help you and your electric cooperative.

You can also feel good about doing business with a local company and local people. Shelby Energy Company cares about the people that it serves. Therefore, you can count on Shelby Energy Company to be community minded and always willing to support the local community.

Shelby Energy Company is currently offering a *Special Incentive* for new tank installations. **For more information, please call 774-2311 or stop by our office.**

### New customer tank set

This coupon is good for 50 free gallons of propane

Name \_\_\_\_\_

Address \_\_\_\_\_

Present this coupon to Shelby Energy Company upon first delivery.

6/98

## Poison-proof your home

Alcohol, drain cleaners, pesticides, medicines, bleach, nail polish remover, perfume and plants, all have one thing in common. They are all poisonous for children and account for most home poisonings.

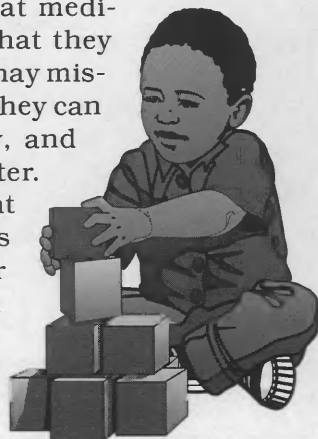
"Common household products can be deadly poisons if consumed by a child. The best treatment for a poisoning is prevention," said Pat Hildebrand, University of Illinois Cooperative Extension Service Consumer and Family Economics Educator. "Young children are naturally curious. They learn about their world partly by putting everything in their mouths that they can get their hands on."

Household products should be viewed as a potential poison, and should be stored out of a child's reach. Never use food containers to store non-edible products. Also, store food separately from household cleaners, pesticides and medicines.

When using a cleaning product or cosmetics, remove the product from a counter or table

if the phone or doorbell rings. It only takes a second for a baby to open a container and ingest the contents. Also, don't throw away any empty containers without first rinsing out the inside with water.

All medications including vitamins should have child-resistant caps and be kept in a locked cabinet that's out of reach of children. Children should never be told that medications are "candy" or that they "taste like candy." This may mislead them into thinking they can eat medicine like candy, and that can lead to disaster. Children should be taught not to take medications originally prescribed for someone else. Even though children are taught to share from an early age, that doesn't apply when it comes to



medicines.

Pesticides can cause special safety problems, according to Hildebrand. Always read the label before using pesticides, or consult the pest control operators about safety concerns when hiring a pest control service. It is a good idea to keep both children and pets away from the sprayed area for 24 hours, and never place insect or rodent baits where children can get at them.

"An intelligent, active baby will naturally be curious about brightly colored labels and containers. Never underestimate a baby's ability to get into potential poisoning around the home" said Hildebrand.

As parents purchase diapers, bottles, and other items for the new baby, it isn't too soon to pick up a poison treatment kit for the home. This kit should contain syrup of ipecac, acti-

vated charcoal and epsom salts. Keep the phone number posted for the nearest poison center, either by the phone, or in the poison kit.

If you fear your child may have ingested a potentially toxic substance, call your physician, your local emergency department, or the Illinois Poison Center, 24 hours-a-day at (800) 942-5969.

Do not automatically give a child the syrup of ipecac, activated charcoal, or epsom salts unless instructed to do so. Often, the poison center will suggest giving the patient a glass of water or milk to dilute the swallowed poison.

Poisonings happen all too often and can be prevented. "It only takes a few minutes to put potential poisons away out of baby's reach," said Hildebrand. "That few minutes can save a life."

## New customer service and outage reporting service

Shelby Electric Cooperative is pleased to announce its new, enhanced customer service and outage reporting service. The service, which began taking calls for the cooperative on April 16, is a key component of Shelby Electric's dispatch center, Cooperative Response Center (CRC).

"In order to increase the members' capability of reaching the cooperative to report an outage and add the desired 24-hour access to information on the cooperative's services, it is essential to work with our CRC partners. Together, we have the expertise and resources to build a system powerful enough to handle the majority and diversity of calls that attempt to reach our cooperative after the business office is closed. With the enhanced system, your cooperative will be capable of answering more calls than ever before. Our goal is to provide you, our member-owner, with the highest level of response possible," says President and CEO Jim Coleman.

Here are some important tips to remember when calling us:

- Your phone number is critical to the operation of the system. The new call answering equipment can read your phone number as you call us (similar to caller ID). This helps quicken the outage reporting process by matching your phone number to your cooperative account record. To assure fast and accurate outage response, we need your current phone number and service address — either write it on your monthly bill statement or call us.

- Our service representatives will handle most calls during non-outage periods. If your phone number matches our records, your account will be displayed to a service representative's com-

puter screen.

- During peak calling periods or large outages, your call may be automatically linked to our voice response system for enhanced outage reporting without a service representative. This voice response system will report your outage to our dispatcher.

- The voice response system will play a message indicating any known outages, the affected area, and expected duration of the outage.

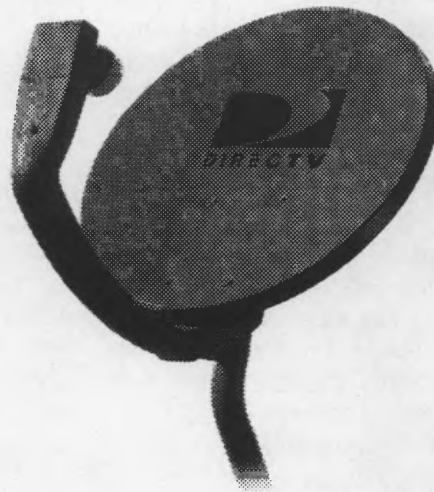
- *If you reach our voice response system and have critical information or an emergency, you can dial "0" and speak to a service representative.*

- Information on our member service programs is available through our service representatives. They will also take a message and send it to our member service director for follow-up.

Shelby Electric Cooperative did an exhaustive search before implementing the CRC answering service. We feel that our members deserve to be responded to by real people — and in other than peak outage situations, service representatives will handle your incoming calls. During regular business hours, personnel are always available at the office to handle your requests, answer any questions, or to take your outage information. After hours, the CRC people will be answering our phone lines (774-3986 or (800) 677-2612). The CRC staff are all well skilled in handling the problems and questions of cooperative members. We think you will find them courteous and very willing to help with outage assistance or information to the best of their ability.



# Nothing measures up to **DIRECTV**



DIRECTV offers more than 200 channels, over 55 pay-per-view choices a night, and more sports than any other mini-dish service. So, what are you waiting for? Call today for special savings on America's most popular satellite TV service.

**Nothing measures up to DIRECTV!**



**Shelby Electric Cooperative**

Monday-Friday

7:30 a.m. to 4:30 p.m.

(800) 677-2612

(217) 774-3986



DIRECTV is an official trademark of DIRECTV, Inc., a unit of Hughes Electronics Corp. © 1998 NRTC.



# Shelby Electric News

SHELBY ELECTRIC COOPERATIVE

217-774-3986

SHELBYVILLE, ILLINOIS

*Your Total Energy Supplier*

## Across the Manager's Desk

*By Jim Coleman*



## Touchstone Energy<sup>SM</sup>

Recently, Shelby Electric Cooperative joined a nationwide alliance of more than 450 electric cooperatives across the country, representing more than nine and one half million people, in the Touchstone Energy brand identity program. You are probably asking yourself what is a brand identity program and what exactly is Touchstone Energy? I am glad that you asked.

All of you are familiar with brands. Coca-Cola and Pepsi are well-known brands of soft drinks and no one has to ask what they are. You just know. Both have been very successful at what is known as brand identity. Other well known brands include Kleenex facial tissue paper and Band Aid bandages. In fact some people think of facial tissue paper as Kleenex and bandages as Band Aids. There are all kinds of brands and it is a fact that there is a real and valuable benefit to being associated with a successful brand. As the electric utility industry becomes re-regulated, it is apparent that branding of electricity will become increasingly important as utilities compete for consumers. Therefore, the majority of electric cooperatives in America plan to take advantage of our reputation and implement a major marketing effort to brand electric cooperatives across America with one single and exclusive identity.

The dictionary definition of touchstone is "a test of genuineness, a standard of excellence and ability." Touchstone Energy symbolizes everything that electric cooperatives represent: high quality electric power, personal/human connections with the people that we serve, and co-ops' commitment to the communities that we serve. The objective of having our own brand, Touchstone Energy, is to build and communicate the value of cooperatives to the communities and consumers, both households and businesses, that we serve.

You can count on Shelby Electric Cooperative and other Touchstone Energy partners to deliver reliable, affordable energy services now and into the future.

Electric cooperatives have a long and rich history in this great country. Remember the investor owned utility companies said that they would not serve rural areas because it would not be profitable. However, the government knew that it just was not right to ignore rural America. Through the Rural Electrification Administration (REA) a way was made for people to build and operate their very own electric utility, otherwise known as the electric cooperative. Electric cooperatives are all about service and taking care of people.

Electricity made life substantially better for people living and working in the country. Today, cooperatives such as Shelby Electric Cooperative are continuing to make life better for those living, working and operating businesses in the areas that we serve. Shelby Electric Cooperative has made it possible for you to enjoy satellite TV when the cable company wouldn't bring the lines to your home. We are also in the process of seeing to it that you have a safe, affordable and reliable water supply. We have done this, once again, because no one else would do it for you.

Shelby Electric Cooperative is still your locally owned and controlled cooperative with the same name that we have had for sixty years now. Nonetheless, you will notice a new graphic symbol accompanying the familiar name and logo of Shelby Electric Cooperative on utility bucket trucks, power bills and all other places that have our logo. The Touchstone Energy name and logo will be used by all participating electric cooperatives in conjunction with their existing name and logo. A major, nationwide marketing campaign in TV, radio and newspaper promoting Touchstone Energy has already begun and Shelby Electric Cooperative is proud to be a part of this effort. Consumers everywhere will come to know and respect the Touchstone Energy symbol. Touchstone Energy partners are pledged to operate with integrity, customer accountability, innovation and a spirit of awareness. After all, isn't that what you have always expected and received from your very own energy provider?

# What are you looking at?

More of what to watch for – this month on DIRECTV®

July 1998

## DIRECTV sports and outdoors programming adds to summer fun

*Enjoy the great outdoors in the comfort of your living room*

The summer means different things for everyone. For some, it signals the height of baseball season. It means the crack of a bat, the smell of a good hot dog and a bag of peanuts. For others, it's time to hit the road – either to the mountains or the beach – relax in the sun, and get in some vigorous biking, running, climbing or hiking. Still others love to spend time in their garden or make some home improvements.

No matter what the activity, DIRECTV has the right programming to add to your summer fun. With the best sports packages available and a variety of more than 200 channels to choose from, the only problem you might have is deciding which channel to watch!

MLB Extra Innings is in full swing in July, as baseball season builds momentum heading into its second half. You'll have the best seats in the ballpark for up to 35 out-of-market games a week during the regular season. And you can purchase a special

half-season subscription to MLB Extra Innings for just \$99 after July 7. Or check out any of the array of sports channels available on Total Choice Gold, from The Golf Channel (ch. 304), and Classic Sports Network (ch. 305), to the thrills of Speedvision (ch. 306). For the best programs on fishing, hiking or camping, tune into Outdoor Life (ch. 307), also available on Total Choice Gold.

Let Home & Garden Television (ch. 214), The Learning Channel (ch. 246) and the Discovery Channel (ch. 245) guide you through any home or special-interest project you'll undertake this summer. Easy, step-by-step instructions will help you do everything from landscaping your yard to building an addition on your home.

So when the sun is shining and you're itching to get out and enjoy the summer, make DIRECTV your ideal planning guide!

This newsletter, for DIRECTV subscribers only,  
is brought to you by:

**Shelby Electric Cooperative**  
**Monday — Friday**  
**7:30 a.m. to 4:30 p.m.**  
**(800) 677-2612**  
**(217) 774-3986**



## CHANNEL CHOOSER



**In the mood for laughs?**  
**Comedy Central is at your service.**

*It's the only channel dedicated to your funny bone.*

Whether you like your comedy dry and sophisticated, or sloppy as a pie in the face, Comedy Central (ch. 255) delivers. Feeling a bit blue? Let "Dr. Katz, Professional Therapist," work his psychological magic on you. Maybe your humor runs slightly south of normal? "South Park" may be your home away from home.

Comedy Central is also the place to go for your favorite Hollywood comedies. Every week, Comedy Central brings you the best gut-busters Tinseltown has to offer. No matter how you like your laughs, Comedy Central dishes it out for you.

## Money Talks

Starring Charlie Sheen, Chris Tucker & Paul Sorvino

A jailbreak sends murder convict Franklin Hatchet on the run. With the entire city on his tail, only reporter James Russell can clear his name by helping him retrieve a fortune in stolen diamonds. (Action/Comedy, R)



## Operation Condor

Starring Jackie Chan

Chan directs himself as a government agent who searches the Sahara desert for lost Nazi gold in this light-hearted caper comedy and martial arts action flick. (Action/Comedy, PG-13)

## A Simple Wish

Starring Martin Short, Kathleen Turner & Mara Wilson

Murray is a male fairy godmother, and he is trying to help 6-year-old Anabel fulfill her "simple wish" – that her father Oliver, a cab driver, would win the leading role in a Broadway musical. (Children's Fantasy, PG)



## Spawn

Starring Michael Jai White, Martin Sheen & John Leguizamo

Evil has a new enemy and justice has a new hero! A mercenary who is killed strikes a deal with the devil to lead the forces of evil on earth if he is allowed to live again to avenge his own death. (Fantasy, PG-13)



## Sports Update

### Football season is just around the corner, so get your 'Ticket'

Football may be the last thing on your mind during the dog days of summer. But all your favorite teams are gearing up for the 1998 season, and so should you. NFL Sunday Ticket, DIRECTV's exclusive, popular professional football package, delivers up to 13 NFL games every Sunday – nearly 200 regular season games over 17 weeks.

And for a limited time, take advantage of DIRECTV's Early Bird special for even more savings on this popular sports package. It's only \$139, or four interest-free payments of \$34.75. But hurry! Our NFL Sunday Ticket Early Bird special ends July 31, so call today!

## Quick Tips

### Dual-LNB systems give every TV access to DIRECTV

Want to watch any DIRECTV channel on any television in your home, regardless what anyone else in the house is watching? Then, you want a dual-LNB DSS system. LNB refers to the line connections on the "arm" of your DSS dish. A single connection allows a coaxial line to run to a single receiver, while a dual-LNB

allows for multiple receivers to be hooked up to various televisions throughout the house. If you currently own a single-LNB system, it's easy to upgrade your system with a new LNB. If you're interested in an upgrade, call us today.

# Outage Report

March 20, 1998 through May 22, 1998

3 / 24 - 5:27 p.m.  
 Richland Sub, loose neutral, off and on 2.0 hours.  
 3 / 28 - 10:45 p.m.  
 Wenonah Sub, lightning, off 2.0 hours.  
 4 / 7 - 10:53 p.m.  
 Moweaqua Sub, members wiring, off 1.5 hours.  
 3 / 25 - 12:40 p.m.  
 Dunkel Sub, unknown, off .75 hours.  
 3 / 29 - 12:55 a.m.  
 Velma Sub, trees, off 2.0 hours.  
 4 / 10 - 10:09 p.m.  
 Velma Sub, tree, off 4.0 hours.  
 3 / 25 - 2:30 p.m.  
 Lakewood Sub, equipment failure, off .75 hours.  
 3 / 30 - 8:25 p.m.  
 Pana Sub, members wiring, off 1.5 hours.  
 4 / 12 - 8:19 p.m.  
 Yantisville Sub, members wires, off 1.25 hours.  
 3 / 26 - 8:09 a.m.  
 Elwin Sub, CIPS planned work, off 3 minutes.  
 4 / 1 - 8:35 a.m.  
 Neoga Sub, change-out insulator, off .25 hours.  
 4 / 13 - 8:00 a.m.  
 Neoga Sub, change-out 2 poles, off 4.0 hours.  
 3 / 26 - 4:44 p.m.  
 Richland Sub, broken pole, off .75 hours.  
 4 / 1 - 8:40 a.m.  
 Pana Sub, change-out pole, off .75 hours.  
 4 / 15 - 5:02 a.m.  
 Velma Sub, breaker operated at sub, off 1.5 hours.  
 3 / 27 - 9:40 a.m.  
 Velma Sub, planned work, off 1.5 hours.  
 4 / 1 - 9:25 a.m.  
 Lakewood Sub, animal, off .75 hours.  
 4 / 15 - 8:50 p.m.  
 Velma Sub, loose connection, off 2.5 hours.  
 3 / 27 - 5:37 p.m.  
 Velma Sub, Tail burnt off hot wire clamp, off 1.0 hours.

4 / 5 - 5:05 p.m.  
 Neoga Sub, tree, off 2.25 hours.  
 4 / 18 - 8:30 a.m.  
 Taylorville Sub, bird, off 1.25 hours.  
 3 / 27 - 8:34 p.m.  
 Neoga Sub, bad transformer, off 2.25 hours.  
 4 / 7 - 7:45 a.m.  
 Velma Sub, blown fuse, off .5 hours.  
 4 / 20 - 1:05 p.m.  
 Pana Sub, trees, off 1.25 hours.  
 3 / 28 - 7:46 a.m.  
 Richland Sub, problem with fused cut-out, off 3.75 hours.  
 4 / 7 - 6:26 p.m.  
 Yantisville Sub, CIPS outage/storm, off 1.0 hours.  
 4 / 22 - 11:35 a.m.  
 Elwin Sub, phase floating, off .25 hours.  
 3 / 28 - 10:50 a.m.  
 Pana Sub, bad transformer, off 2.5 hours.  
 4 / 7 - 6:26 p.m.  
 Moweaqua Sub, CIPS outage/storm, off 1.0 hours.  
 4 / 23 - 2:05 p.m.  
 Velma Sub, member's wiring, off 1.25 hours.  
 3 / 28 - 3:25 p.m.  
 Lakewood Sub, trees, off 2.75 hours.  
 4 / 7 - 6:26 p.m.  
 Dunkel Sub, CIPS outage/storm, off 1.0 hours.  
 3 / 28 - 9:14 p.m.  
 Yantisville Sub, bad sec. underground, off 2.0 hours.  
 4 / 7 - 7:33 p.m.  
 Yantisville Sub, tree, off .5 hours.  
 4/27 - 6:00 a.m.  
 Yantisville Sub, trees, off 4 hours  
 4/28 - 2/13 a.m.  
 Taylorville Sub, lightning, off 3.25 hours.  
 4/28 - 6:03 a.m.  
 Taylorville Sub, lightning, off .75 hours.  
 4/28 - 11:23 a.m.  
 Moweaqua Sub, broken conductor, off 2.5 hours.  
 4/28 - 1:45 p.m.  
 Pana Sub, broken pole, off .5 hours.  
 4/28 - 1:50 p.m.  
 Taylorville Sub, broken conductor, off 2.5 hours.

4/30 - 2:30 p.m.  
 Neoga Sub, loose connection, off 1.5 hours.  
 5/4 - 9:07 a.m.  
 Moweaqua Sub, cut in new substation, off 1.5 hours.  
 5/5 - 9:45 a.m.  
 Yantisville Sub, change out bad pole, off 1.25 hours.  
 5/6 - 8:26 a.m.  
 Neoga Sub, set new pole, off .5 hours.  
 5/8 - 8:00 a.m.  
 Neoga Sub, trees, off 1.25 hours.  
 5/8 - 11:00 a.m.  
 Shelbyville Sub, animal, off .75 hours.  
 5/9 - 4:45 a.m.  
 Velma Sub, blown fuse, off 2.25 hours.  
 5/10 - 12:43 p.m.  
 Velma Sub, members wiring, off 2.0 hours.  
 5/11 - 3:30 p.m.  
 Velma Sub, vehicle tore down line, off .75 hours.  
 5/13 - 6:11 a.m.  
 Lakewood Sub, breaker failed, off 1.0 hours.  
 5/13 - 9:20 a.m.  
 Richland Sub, members wiring, off .75 hours.  
 5/18 - 7:45 a.m.  
 Elwin Sub, members wiring, off 1.0 hours.  
 5/18 - 10:00 a.m.  
 Velma Sub, loose connection, off 1.25 hours.  
 5/29 - 8:15 p.m.  
 Elwin Sub, storm, off 3.75 hours.  
 5/19 - 8:26 p.m.  
 Moweaqua Sub, lightning, off 3.0 hours.  
 5/19 - 9:39 p.m.  
 Neoga Sub, storm, off 1.0 hours.  
 5/19 - 10:05 p.m.  
 Neoga Sub, members wiring, off .75 hours.  
 5/20 - 11:25 a.m.  
 Yantisville sub, lightning, off 4.0 hours.  
 5/20 - 11:30 a.m.  
 Taylorville Sub, lightning, off .75 hours.  
 5/21 - 11:20 a.m.  
 Yantisville Sub, members wiring, off 1.5 hours.

## Step into the lineman's shoes!

If you made your living as a lineman, it goes without saying you'd want your work environment as safe as possible.

You can help make the lineman's job safe by putting a little common sense into action. For example:

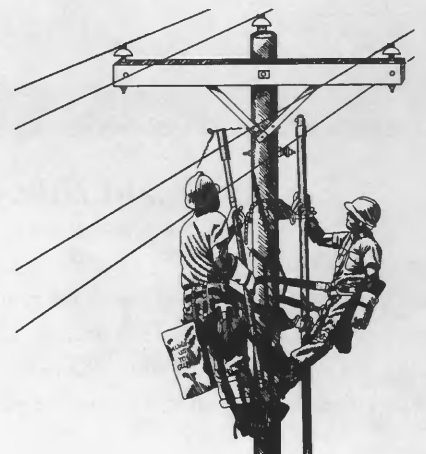
- Don't hang birdhouses or basketball goals on electrical poles. The lineman will have great difficulty climbing around them, even though you think they're perfectly placed.

- Don't landscape around

poles with flower boxes, birdhouses or anything else that might cause harm if a lineman were to fall.

- Don't hang signs on poles because the nails or staples could cause the lineman to slip if he has to climb.

Use a little common sense around utility poles; show your appreciation for those who work so hard to provide you reliable electric service. All it takes is stepping into the other guy's shoes for a few moments!





# Shelby Electric News

SHELBY ELECTRIC COOPERATIVE 217-774-3986 SHELBYVILLE, ILLINOIS

*Your Total Energy Supplier*

## Shelby's 60 — and going strong!



The dinner line was a popular place.

Shelby Electric Cooperative members celebrated the consumer-owned utility's 60th anniversary during an annual meeting held Friday, June 19, at the 4-H Club Fair-ground in Shelbyville. Co-op officials reviewed the cooperative's history, its current services and rates and the future under electric utility deregulation.



The Gene Trimble Clown Band, a favorite at Shelby's meetings for many years, turned in another excellent performance.

Reports were presented on the cooperative's subsidiary businesses in propane, satellite TV, two-way radio and cellular phone services. The new businesses are part of the cooperative's mission to improve the quality of life in rural areas. Profits from the businesses also help offset expenses for the electric side of the cooperative's business. Also, in an effort to improve rural areas, Shelby Electric employees are helping to start a regional water system called Lincoln Prairie. Although not a part of the cooperative, Shelby Electric has worked hard to make sure the water project is a success. Shelby Electric President and CEO Jim Coleman, reported the water project has 750 customers signed up

and recently secured a wholesale water supply contract.

Two board members were re-elected during the meeting. They were Robert H. Primmer of Findlay and John M. Scott of Pana.



Floyd Spahr, standing right, receives his 50-year award from James E. Coleman, President/CEO.

In his report Board Chairman, Primmer remembered the days of coal oil lamps and outhouses. "Sixty-years ago investor-owned utilities refused to serve rural areas. There was no way they could make a profit," said Primmer. Even today, he said, rates are high in rural areas because there are only four customers per mile of line compared to 45 in the average city.

Primmer said it had been six years since the cooperative had to raise rates. The cooperative has held the line on rates despite having to add over \$14 million in new lines and substations to serve nearly 1,000 new members, plus building new subsidiary businesses. "A significant rate decrease is scheduled for 2001," he said. The rate decrease will be possible because of a successful buyout of Soyland Power Cooperative's remaining debt obligation with Rural Utilities Service (RUS, formerly known as REA), refinancing of the debt, transfer of Soyland's ownership obligations of the Clinton nuclear plant back to Illinois Power and a favorable power contract with Illinois Power. Soyland provides whole-



Two area students each received a \$1,000 scholarship from Shelby Electric, and their checks were presented to them by Robert Primmer, chairman of the Shelby Electric Cooperative Board of Directors. From left are Brent Covington of Stonington, Jennifer Walk of Neoga and Primmer.

sale power to Shelby Electric.

Primmer reminded the members that the local cooperative is a not-for-profit business and that any profits would be returned to the members. A bill credit of \$190,000 was given back to members in January, he said, and the cooperative was now ready to pay capital credits to past member's estates.

Primmer reported Shelby Energy, the co-op's propane subsidiary, gained 134 new customers in the past 12 months and that the satellite TV business gained 676 new customers. Primmer said the board also considered starting another retail service business and a merger offer from another cooperative, but declined both offers. "We aren't that interested in any mergers right now, but we feel, especially in these fast changing times, that we must not allow ourselves to become

complacent or satisfied with the status quo," said Primmer.

President and CEO James E. Coleman was not kidding when he told the crowd "I am extremely happy to be with you



Members cast their ballots during the election.

today." The night before the meeting was a rough one for both the cooperative and its CEO. Coleman, was returning home on a commuter plane when the plane's hydraulic systems failed. Thirty-five minutes later, after a lot of praying, the plane landed in St Louis, where it was greeted by fire trucks and flashing lights. The cooperative's linemen also had a rough night with wide-

spread outages, probably the worst this year, according to Coleman. One lineman, Roy Childress, broke his leg when a pole fell on him.

Updating the members on electric utility deregulation, Coleman said the state's electric cooperatives supported and were included in the Illinois deregulation law. "The state legislature recognized that cooperatives and municipal utilities are different compared to investor owned utilities, and in the law gave the cooperative board the local control necessary to determine when the cooperative would participate in full deregulation. The cooperatives of Illinois could be the first in deregulation if it is found to be the best thing for members," he said.

However, Coleman warned, "As with many other industries that have been deregulated, the little guy paid the price either through higher costs, loss of service or both. Many of the investor-owned utilities have cut



## Shelby Energy Company

Shelby Energy Company can assist you with all your Liquid Propane (LP) gas needs. No matter if you have a commercial, industrial, agricultural, residential or a motor fuel account, you can count on the professional staff of Shelby Energy Company to provide the best service to your account.

Shelby Energy Company offers *gas contracts* whereby a customer can lock in a summer rate on LP gas and has that price guaranteed up through March of the following year. *Budget billing* is also available to help a person avoid those large bills when a tank is filled.

Customers can choose to use their own tank if they have one or they can lease a 500 gallon above ground tank for \$1 a year. If a customer prefers, they may also purchase an above ground tank or an underground tank.

Shelby Energy Company provides its customers with emergency service 24 hours-a-day, 365 days-a-year. If a customer has a concern about their LP gas system, they should not hesitate to contact their supplier. You can count on Shelby Energy Company to be there for you.

Shelby Energy Company services accounts within the Cooperative service area. However, you do not have to be a member of Shelby Electric Cooperative to take advantage of competitive prices and great service. If you are a member of Shelby Electric Cooperative, you can help yourself by making Shelby Energy Company your LP gas supplier. Doing business with Shelby Energy Company does help you and your electric cooperative.

You can also feel good about doing business with a local company and local people. Shelby Energy Company cares about the people that it serves. Therefore, you can count on Shelby Energy Company to be community minded and always willing to support the local community.

Shelby Energy Company is currently offering a *Special Incentive* for new tank installations. **For more information, please call 774-2311 or stop by our office.**

### New customer tank set

This coupon is good for 50 free gallons of propane

Name \_\_\_\_\_

Address \_\_\_\_\_

Present this coupon to Shelby Energy Company upon first delivery.

6/98

employees and services to the bone in an attempt to maximize profits to their investors, while sacrificing quality and possibly even employee safety. Shelby Electric plans to continue to provide the highest quality service to our members and not gut the electric system like some others are doing."

Coleman said that in California, the state that deregulation really started in, there is now a movement by the residential customers to repeal the deregulation law. "Over a million signatures have been obtained by the citizens in California to turn back the deregulation bill because the small consumer is going to be paying higher rates. One of the largest power marketers, Enron, has now abandoned the residential accounts stating that there isn't enough profit in it for them. This move by Enron indicates what many of us have been saying, that deregulation is great for large power users, but the residential and small commercial accounts will pay the price."

Power supply in Illinois may once again be questionable and blackouts are possible especially if it gets extremely hot, said Coleman. "There is once again



**The table top safety display was a fascinating place for many, and these two youngsters get a quick lesson in safety from a Shelby Electric employee.**

be taken as a request to the members to shut off unnecessary electric items in the home. By doing so you will be assisting us in the effort to keep power supply cost down which in turn helps keep your cost down."

Coleman told the members the cooperative was joining 450 electric cooperatives across the country in a new branding campaign. "This partnership is represented by a logo called Touchstone Energy and you will see it on all of our signs," said Coleman. "The Touchstone Energy program is an effort to tell the whole country about the value of being a cooperative member. Many new cooperatives are being formed around the country due to deregulation, and it is my belief that cooperatives will not only survive, but thrive in the future."

Coleman paid tribute to the service of a special group of members, electricians who

going to be a lack of available power in the state. Several generating stations are still shut down and will probably not be running this summer. The cooperative will issue a peak alert warning on the radio stations if a power supply problem becomes evident. If this alert is issued it should

be taken as a request to the members to shut off unnecessary electric items in the home. By doing so you will be assisting us in the effort to keep power supply cost down which in turn helps keep your cost down."

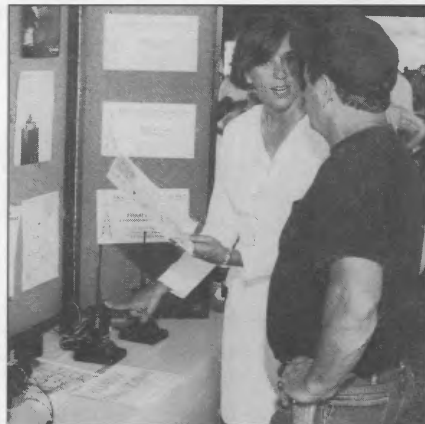
Coleman told the members the cooperative was joining 450 electric cooperatives across the country in a new branding campaign. "This partnership is represented by a logo called Touchstone Energy and you will see it on all of our signs," said Coleman. "The Touchstone Energy program is an effort to tell the whole country about the value of being a cooperative member. Many new cooperatives are being formed around the country due to deregulation, and it is my belief that cooperatives will not only survive, but thrive in the future."

Coleman paid tribute to the service of a special group of members, electricians who

helped wire homes 60 years ago. Two of the electricians in attendance were Wayne Rice and Earl Shumard. The board of directors also honored long-time lineman Floyd Sphar for 50 years of dedicated service. Coleman re-

mind the crowd that this was not a retirement presentation. "We expect many more years yet to come. I think Floyd can still out-climb some of the young guys."

Two area students were also honored with presentations of \$1,000 scholarships from the cooperative. They were Jennifer Walk of Neoga, daughter of Randy and Kathy Walk, and Brent Covington of Stonington, son of Richard and Jill



**Clear Talk Radio Communications is a growing part of the Shelby family of businesses, and had an exhibit at the meeting. Here, a Clear Talk representative discusses its merits with a member.**

Covington.

Treasurer Richard Boggs of Macon, reported sales for 1997 were \$16,875,990 and expenses equaled \$10,808,490. Boggs said, "This means for every dollar you paid Shelby Electric, 64 cents was used to purchase electricity. Over the past few years this figure has decreased due to Soyland Power's buyout of the Clinton Nuclear Plant. Our total gain for the year was \$785,730. The average member has \$1,430 of ownership equity invested in Shelby Electric. The co-op has invested \$3,092 per customer, which indicates that the co-op has invested over twice as much to deliver service to the customer as you the customer have invested in the co-op."

Shelby Electric Cooperative serves 8,961 members over 2,146 miles of line in parts of nine area counties.



**The satellite TV programming display was popular with the membership. Here, a representative discusses the merits of programming with a couple of members.**



After 60 years of bringing electric service to rural areas, today Shelby Electric Cooperative is providing new services like satellite TV, two-way radio, cellular phone and propane service. Leading the cooperative in these new ventures are James E. Coleman, (center) president and CEO, and re-elected board members Robert H. Primmer of Findlay (left) and John M. Scott of Pana (right). The member-owned cooperative held its board election and celebrated its 60th annual meeting, Friday, June 19.



# Don't *just buy* a dish...

	DIRECTV/ DSS*	DISH Network
Access to over 200 fully-digital channels.	yes	no
As many as 55 pay-per-view movie choices every night.	yes	no
Up to 13 different NFL games every Sunday with NFL Sunday Ticket.	yes	no
Equipment from RCA, Sony, Hughes, GE, ProScan, Uniden, and Toshiba.	yes	no
Over 3 million satisfied subscribers.	yes	no

...get  
**Satellite TV**  
*at its Best.*

## Shelby Electric Cooperative

Monday - Friday  
7:30 a.m. to 4:30 p.m.  
(800) 677-2612  
(217) 774-3986

Some mini-dish providers promise revolutionary television service, but what they really give you is the same old thing you get with cable. Only DIRECTV® delivers new features that only Satellite TV at its Best can provide. Like 55 different hit movies every night. Exclusive sports packages all year long. And interactive controls that make TV viewing just plain fun. So, don't get just any dish. Call today for DIRECTV®.



Hardware and programming sold separately. DIRECTV, DSS, and "DIRECTV. Satellite TV at its BEST" are official trademarks of DIRECTV, Inc., a unit of Hughes Electronics Corp. © 1998 NRTC.



# Shelby Electric News

SHELBY ELECTRIC COOPERATIVE 217-774-3986 SHELBYVILLE, ILLINOIS

*Your Total Energy Supplier*

## What causes my lights to blink?

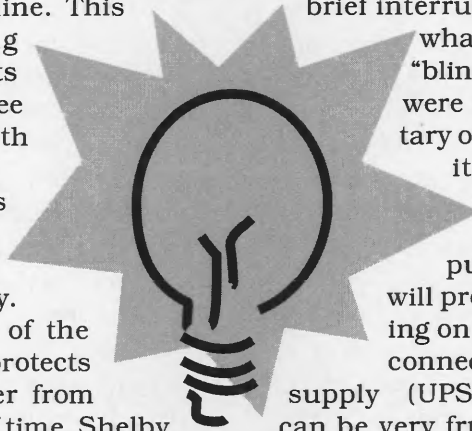
"What causes my lights to blink?" is a frequently asked question in the electric utility business. Usually blinking lights are a result of momentary outages that occur when some type of disturbance exists on the line. This could occur when lightning strikes, when an automobile hits a pole or when a squirrel or tree branch comes into contact with an energized power line.

Actually, when the lights blink, it is an indication that your electric cooperative's equipment is operating properly. Blinking lights are the result of the operation of equipment that protects the lines and keeps the power from going off for extended periods of time. Shelby Electric Cooperative's distribution system includes devices that are called oil circuit reclosers (OCRs). OCRs operate whenever there is a short circuit on the line. If the short circuit is cleared after the first operation of the OCR, the recloser allows power to continue flowing through the lines with only a brief interruption of service. If the short circuit is not cleared after three operations of the OCR, the OCR will open and stop the power from running through the lines. At that point a line crew will be dispatched after the outage is reported. Once the linemen

have found the problem and corrected it, a line-man will close the OCR back in and restore service.

A single operation of the OCR will cause a brief interruption in power and the result is what some people refer to as the "blinking light syndrome". Even if you were not at home when the momentary outage occurred, you can tell that it happened because your digital clock will need to be reset. If you are working on the computer when a blink occurs, you will probably lose what you were working on unless you have your computer connected to an uninterruptible power supply (UPS). Everyone agrees that blinks can be very frustrating and irritating.

However, just remember that if the cooperative did not use OCRs, every short circuit would cause your power to go off and stay off until a line crew could be sent out to restore service. If your power starts blinking on and off frequently and there does not appear to be a reason such as a storm, you should report it by calling Shelby Electric Cooperative at 774-3986 or (800) 677-2612. There could be a problem that we need to take care of for you.



## Office closing

**Our offices will be closed Monday,  
Sept. 7,  
in observance of Labor Day.**

***Enjoy your holiday!***



## Like it or not, there's still lots to do outside — carefully

For many of us, as winter draws to a close and spring arrives, we begin to look forward to getting outside, even if it's just to mow the lawn, do the trimming with our monofilament trimmers, pull weeds, and to do other chores around the yard. We get those urges because winter confinement and snow shoveling has warped our minds.

Unfortunately, the chores that look so fun in the first bloom of spring last well into the summer and fall. Many of us, by now, are a little less enthusiastic about yard work than we were just a few short months ago.

Still, those chores need to be done. Remember, there's always a certain amount of risk when dealing with power tools outdoors, or when working with ladders and poles near electric lines.

There are several things you can do to make your outdoor work safer, and some of the rules also apply to power tool activity. For example, you should inspect power tools before each use, to make sure they are in the same condition they were in when you put them away. Tools sometimes have a way of getting borrowed, broken, and returned, without you knowing about it, especially if you have children.

At any rate, be sure to look for frayed power cords, broken plugs and cracked or broken housings. When using tools or power cords outdoors, be sure they're marked for use outside. And any time you're using power cords, be sure they're rated for a higher amperage than the tool they're powering. Always turn off a tool if its cord overheats.

A ground fault circuit interrupter (GFCI) is an important part of any circuit that is used outdoors, or where you may come into contact with water. GFCIs sense a fault in a current and can shut off that circuit in a fraction of a second, before it can do any real damage.

The National Electrical Safety Code, often referred to as "the code," requires GFCIs in newly constructed kitchens, bathrooms and outside receptacles. Safety experts

strongly recommend that you have them retrofitted into older homes, too.

But they're especially important outdoors, where you're more likely to be standing on the ground and working in damp conditions. Working with electricity in wet conditions is not a good idea, GFCI or not. If you have outside outlets on your home, be sure they're weatherproof, and make sure that they're protected by a GFCI.

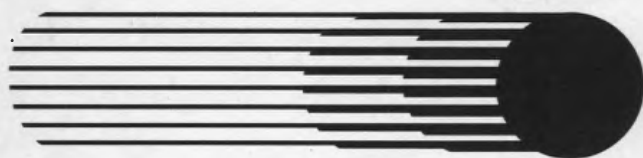
If you have an outlet and it's not protected, you can buy extension cords with such protection built in. They're not very expensive, and they offer a lot of protection.

As fall approaches and the urge to plant a tree overcomes you, be sure to look up — and down — before starting to dig that hole. Look up to be sure the tree you plant won't eventually grow into your lines, or those of your cop. And look down, because more and more homes these days are being served by underground utilities. It wasn't all that long ago that you had one line coming into your house for electricity, a pipe for some kind of fuel, and water and sewer lines. Now you need to worry about electric lines, telephone lines, water lines, sewer lines, and maybe a couple of others. Be sure you know where they are before you dig. Digging into an electrical line could ruin your whole day, if not your whole life.

And while some lines are sturdy enough that your shovel isn't going to damage them very much, telephone and electric lines are sheathed in plastic and will break fairly easily. If you're using some kind of mechanical digger, you can do a lot of harm quickly.

The danger of dig-ins brings up an important safety point for the future: If you don't know where all your underground stuff is, find out, and draw a simple map spelling out all those locations. It may help you avoid dig-ins in the future. If the recent past is any indication, there's a good probability that there'll be more underground things going into your home, not less.





## Shelby Energy Company

Shelby Energy Company can assist you with all your Liquid Propane (LP) gas needs. No matter if you have a commercial, industrial, agricultural, residential or a motor fuel account, you can count on the professional staff of Shelby Energy Company to provide the best service to your account.

Shelby Energy Company offers *gas contracts* whereby a customer can lock in a summer rate on LP gas and has that price guaranteed up through March of the following year. *Budget billing* is also available to help a person avoid those large bills when a tank is filled.

Customers can choose to use their own tank if they have one or they can lease a 500 gallon above ground tank for \$1 a year. If a customer prefers, they may also purchase an above ground tank or an underground tank.

Shelby Energy Company provides its customers with emergency service 24 hours-a-day, 365 days-a-year. If a customer has a concern about their LP gas system, they should not hesitate to contact their supplier. You can count on Shelby Energy Company to be there for you.

Shelby Energy Company services accounts

within the Cooperative service area. However, you do not have to be a member of Shelby Electric Cooperative to take advantage of competitive prices and great service. If you are a member of Shelby Electric Cooperative, you can help yourself by making Shelby Energy Company your LP gas supplier. Doing business with Shelby Energy Company does help you and your electric cooperative.

You can also feel good about doing business with a local company and local people. Shelby Energy Company cares about the people that it serves. Therefore, you can count on Shelby Energy Company to be community minded and always willing to support the local community.

Shelby Energy Company is currently offering a *Special Incentive* for new tank installations. **For more information, please call 774-2311 or stop by our office.**

### New customer tank set

This coupon is good for first tank fill at 50 cents per gallon.

Name \_\_\_\_\_

Address \_\_\_\_\_

Present this coupon to Shelby Energy Company upon first delivery.

6/98

## Safety equipment offered at cost for older tractors

North America's five leading tractor companies are working together to help owners of older tractors equip them with rollover protective structures (ROPS) and seat belts. The safety devices play an important role in reducing deaths and injuries associated with rollovers and runovers. As an incentive to owners, AGCO Corp., Case Corp., Deere & Company, Kubota Tractor Corp. and New Holland North America are making it possible to purchase ROPS and seat belts at the companies' cost, according to the National Safety Council (NSC).

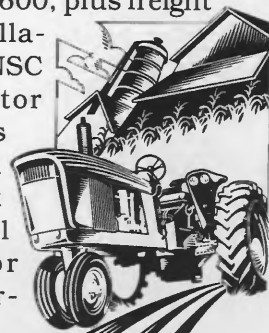
This joint effort is aimed at reducing the two leading causes of death and injury to tractor operators. A recent study of 76 tractor rollover fatalities by Iowa

State University showed all the victims were operating tractors without ROPS and seat belts. If a tractor rolls over and it doesn't have a ROPS, there's a 75 percent chance of the operator dying, according to Iowa State researchers. However, if the tractor has a ROPS and the driver is wearing a seat belt, there is a 95 percent or greater chance of the driver walking away from the rollover accident. Wearing a seat belt is important, because it ensures the operator remains in the protection zone of the ROPS.

ROPS and seat belts became standard equipment on tractors in 1985. However, according to a 1994 survey by the U.S. Department of Agriculture, 62 percent of the estimated 4.7 million

tractors in use on farms were not equipped with ROPS and seat belts.

The five tractor companies are offering kits at cost to their dealers and asking them to sell these kits without markup. For tractor owners concerned about storage facilities with low overhead clearance, Folding ROPS kits are also available for some tractors. Most ROPS kits cost less than \$600, plus freight and installation. The NSC says tractor owners should contact their local dealer for more information.



# What are you looking at?



More of what to watch for – this month on DIRECTV®

September 1998

## Catch the sounds of fall on DIRECTV

*Crashing helmets and crushing linemen on the home of NFL action*

We know it's been a long, hot summer, but the relief of a crisp fall is just around the corner. And you know what that means. Football! NFL action kicks off Sept. 6 and you can have as much as you can watch with NFL Sunday Ticket, only on DIRECTV.

NFL Sunday Ticket features up to 13 different games every Sunday of the regular 17-week season. That means you get all the Sunday games broadcast on Fox and CBS at both 1 p.m. and 4:15 p.m. (ET), no matter what region of the country those games are played. With NFL Sunday Ticket, you're there from the very first kickoff as the NFC Champion Green Bay Packers host rivals the Detroit Lions (or pick from a dozen other first-day match-ups...you get them all), to the final games on Dec. 28.

As an added bonus, you'll receive NFL Sunday Ticket Extra, the perfect companion to this super NFL package. NFL Sunday Ticket Extra, a monthly television series exclusive to DIRECTV, is produced by NFL Films and features some of the best NFL footage you'll ever see. Close-up crunches, slow-motion sacks, everything that makes football great! Catch NFL Sunday Ticket Extra on Tuesday and Thursday, 6 p.m. - 6 a.m. on ch. 339, to meet the greatest players and relive the greatest plays in NFL history.

Act now and get NFL Sunday Ticket for only \$139, or four interest-free payments of \$34.75. And remember, you get NFL Sunday Ticket Extra absolutely free! So call now to make sure you're prepared for football season. Subscribe to NFL Sunday Ticket today!

This newsletter, for DIRECTV subscribers only, is brought to you by:

## Shelby Electric Cooperative

Monday - Friday  
7:30 a.m. to 4:30 p.m.

(800) 677-2612  
(217) 774-3986



## CHANNEL CHOOSER



### Kids go nuts for Nickelodeon

*Family entertainment keeps getting better on DIRECTV.*

Nickelodeon (ch. 249 & 250) features some of the most popular children's programming on television today, plus classic favorites for the entire family. From "Rugrats" and "Kablam," to "Happy Days" and "The Wonder Years," Nickelodeon has the newest family programming as well as the best in vintage television. There's something that every generation will love! And with East and West Coast channels of Nickelodeon and Nick at Nite, DIRECTV delivers these family favorites when it's convenient for everyone in the family. Tune in tonight!



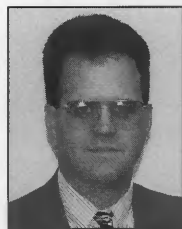
# Shelby Electric News

SHELBY ELECTRIC COOPERATIVE 217-774-3986 SHELBYVILLE, ILLINOIS

*Your Total Energy Supplier*

## Across the Manager's Desk

*By Jim Coleman*



## Geothermal strikes again - just as summer fades

Mother Nature is a perplexing creature. She hits us with hot weather, cold weather, dry weather and rainy weather, and sometimes it seems that we're getting them all at once.

But she prepares her brood for weather by providing them with ways to get out of the worst she throws at them. For many of our furry little friends, Ma Nature gives them the wisdom to dig a burrow, or to move into someone else's. Hundreds, if not thousands, of species winter underground, and many also escape the summer's worst heat by finding a subterranean snug place, where the temperature's about the same the year around.

We can do that too, and we don't have to go down there where it's dank and dark and musty. We can have a geothermal heating-and-cooling system installed in our homes.

As we've said here many times, a geothermal system is an all-in-one heating, cooling and water-heating system, and it will provide you with definite benefits through all the seasons.

A geothermal heating-and-cooling system can cool your home more efficiently than a regular air conditioner or heat pump, and it can provide you with heat for less money than natural gas. That's right: Geothermal gives you cheaper heat than natural gas. Electric co-ops don't discuss that fact very much because in many places, it's really a moot point. Most co-op members don't have natural gas, and the prospects of them getting it any time soon are slim, except in those areas where electric co-ops are branching out into the natural gas business!

If you heat with propane, remember that geothermal can heat and cool for less than you can perform those chores with propane.

And when you're about to replace that old propane furnace that's limped through the last couple of winters, remember the horrendous price spikes of just a few years ago, when your supplier was forced — be-

cause of a shortage — to triple his prices, just as cool weather set in.

That situation has improved for some, since some electric co-ops have gotten into the propane business to help insulate their members from such practices.

Electricity rates in Illinois have been steady for some 15 years now, and while they've been higher than your co-op friends like, they are coming down. That's another thing to consider when you set out to replace that old furnace.

To refresh your memory, a geothermal system is really just a heat pump, but it's like a heat pump on steroids. A heat pump is sort of a reversible air conditioner, bringing cool air into your home in the summer, and bringing in warm air in the winter. You control what it does with your wall-mounted thermostat.

But if a heat pump has a weakness, it's that it begins to lose its "oomph" in the wintertime about the same time most of us do. When the mercury drops to about 10 degrees F., your heat pump's efficiency drops, leaving you hunting supplemental heat.

A geothermal unit is different. It uses a liquid-filled buried loop that circulates underground much like those burrowing little critters we were discussing earlier. It works with a medium that's about 55 degrees F., the year around.

So while an air conditioner or heat pump has to work hard to cool 90-degree air in the summer, your geothermal unit is breezing along with its 55-degree medium, blowing cool air into your home. That's a lot easier than working with the normal outside air temperature. And when it's cooling, it's also transferring heat into a water-heater connection, to help you save about half the cost of that convenience.

And while the average heat pump struggles to heat zero-degree air in the winter, your geothermal unit is breezing along with its 55-degree medium, taking warmth out of the ground and blowing it into your home. It's a system that can't be beat.

If there's a disadvantage to geothermal, it's that the initial cost can be steep. Those buried loops are often sunk into trenches or wells, and digging those can get expensive. Often, the grid can be sunk into a good-sized pond, since you're really just looking for a hefty heat sink.

But whatever the case, geothermal warrants very careful consideration, because its savings are so great. And it's available wherever there's an electric line.

Be sure to look into geothermal, especially if you're thinking of building a new home or replacing an old furnace. The difference is well worth the trouble, and your friends at your local co-op will be happy to help you make the right decision.



Oak Terrace is a complete residential complex and, as can be seen by the pad-mounted transformer and telephone pedestal, has underground utilities.

## Oak Terrace is full-service facility near Pana

*If* you enjoy golf and/or fishing, and who doesn't, there is a fairly new development near Pana where you should be right at home. Oak Terrace is built around Beyers Lake, a 66-acre lake that's 60' deep, and stocked with bluegill, bass and channel cat. The lake is just off Hwy. 51, south of Pana.

There's a championship 18-hole golf course there, too, covering 160 acres. The entire operation is set on 450 acres of rolling, wooded lands, and some 224 acres are set aside for residential sites, with lots from half-acre size and up. Residents receive discounted rates on the course, which is open to the public.

The course, which has been



Trees and water add to the course's challenges.

in operation since 1992, is challenging to even the best of golfers, while still being playable by those who have not yet taken their place on the pro tours.

A couple of holes are set on islands, and water plays an im-

portant part in making much of the rest of the course interesting, too.

While fishing and golfing are important parts of the development, there are also banquet and meeting facilities, with a banquet



The course boasts a driving range and practice area.



**A couple of women try their putting skills.**

room capable of seating 400. There is open dining at Oak Terrace on Friday nights, and also for the Sunday breakfast buffet.

With golf playing such an important part in the complex, it follows that there would be a complete, well-stocked pro shop, and it's built into the building that houses the conference facility.

In addition to homes and home sites, Oak Terrace offers Village Homes, which are priced with year-around maintenance, for those who don't enjoy mowing and trimming.

Oak Terrace Lodge Retreat is a large A-frame structure with a



**The facility includes a complete banquet operation and pro shop.**

full kitchen, four bedrooms, three baths, two fireplaces, a whirlpool, a sauna, and a conference area. It's billed as the ideal place for a corporate retreat. Not surprisingly, the lodge is priced with weekend or weekday golfing packages.

There's no doubt that Oak Terrace is almost custom-built for the golfer, or for the fisherman, or both, but it's also billed as an ideal place to live. It's about an hour from Decatur and Springfield, half again that distance from St. Louis, and is close to several major highways and interstates.

And with all that access to

transportation, the place is secluded enough that you won't feel "hemmed in."

The subdivision has its own wastewater treatment plant, city water, and Shelby Electric Cooperative provides underground electricity.

You can learn more about Oak Terrace by writing them at 100 Beyers Lake Estates, Pana, IL 62557. The phone number there is (217) 539-4477, or (toll-free) (800) 577-7598. Or point your web browser to [www.oakterrace.com](http://www.oakterrace.com).

They'll be glad to hear from you.



**There are many homes at Oak Terrace, and there's room for many more.**



**Lake front lots allow for some serious laid-back living.**



## October is cooperative month

Today many electric cooperative consumers don't remember the first day electricity came to their homes. In fact, your electricity was probably already there when you moved in — one of those automatic things like the telephone line and running water.

The day you joined your electric cooperative, you became a member of a unique organization. An electric cooperative is different.

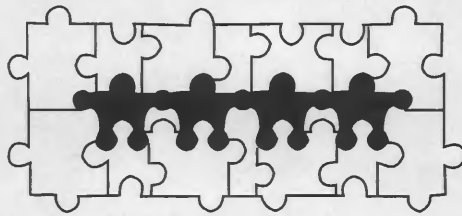
Your electric cooperative is not-for-profit and consumer owned, like the local credit union or food cooperative. That means any revenue above expenses is eventually returned to the member (you) in the

form of capital credit payments.

Your electric cooperative is committed to providing the best possible service at the lowest possible cost. We take pride in our cooperative — a grassroots system of service started by pioneers like those who settled this area. Keeping the cost of electricity affordable helps keep local businesses competitive, while preserving our rural heritage and standard of living.

There is some thing different about receiving your electricity from an electric cooperative. We think it's a difference you can be proud of.

### COOPERATIVES



### Businesses People Trust

**What are you looking at?**

More of what to watch for - this month on DIRECTV®

October 1998

### Catch the sounds of fall on DIRECTV

*Crashing helmets and crushing linemen on the home of NFL action*

We know it's been a long, hot summer, but the relief of a crisp fall is just around the corner. And you know what that means. Football! NFL action kicks off Sept. 6 and you can have as much as you can watch with NFL Sunday Ticket, only on DIRECTV.

NFL Sunday Ticket features up to 13 different games every Sunday of the regular 17-week season. That means you get all the Sunday games broadcast on Fox and CBS at both 1 p.m. and 4:15 p.m. (ET), no matter what region of the country those games are played. With NFL Sunday Ticket, you're there from the very first kickoff as the NFC Champion Green Bay Packers host rivals the Detroit Lions (or pick from a dozen other first-day match-ups...you get them all), to the final games on Dec. 28.

As an added bonus, you'll receive NFL Sunday Ticket Extra, the perfect companion to this super NFL package. NFL Sunday Ticket Extra, a monthly television series exclusive to DIRECTV, is produced by NFL Films and features some of the best NFL footage you'll ever see. Close-up crunches, slow-motion sacks, everything that makes football great! Catch NFL Sunday Ticket Extra on Tuesday and Thursday, 6 p.m. - 6 a.m. on ch. 339, to meet the greatest players and relive the greatest plays in NFL history.

Act now and get NFL Sunday Ticket for only \$139, or four interest-free payments of \$34.75. And remember, you get NFL Sunday Ticket Extra absolutely free! So call now to make sure you're prepared for football season. Subscribe to NFL Sunday Ticket today!



## Shelby Electric Cooperative

Monday - Friday 7:30 a.m. to 4:30 p.m.

(800) 677-2612 (217) 774-3986



# Shelby Electric News

SHELBY ELECTRIC COOPERATIVE 217-774-3986 SHELBYVILLE, ILLINOIS  
Your Total Energy Supplier

## Employees, friends, take part in Relay for Life

Several walkers turned out Saturday, Sept. 12, for the annual Relay for Life, a walk to raise awareness of cancer and to raise funds to combat it. The walk was held at the Shelbyville High School track.

Walkers in the campaign canvassed to raise money, asking friends and neighbors to pledge a certain amount, and each member was urged to have at least \$50 raised in time for the event.

Shelby Electric's "Walking Watts" raised some \$850, and someone from the co-op was walking around the track at any time during the entire event.

The Shelby team was made up of Debbie Wade, Christy Cook, Jeff Price, Floyd "Sparky" Sphar, Donna Stretch, Larry Stephens, Roy Childress, Crystal and Vicki Blackwell, Beth Walden, Danette Logue, and Jim and Tina Coleman.

Employees and/or spouses walking on other



Walkers pass a Relay for Life sign posted beside the track.

teams included Amy Koehler, Carol Walden, Shelly Koehler, Dianne Nohren and Larry, Jody, Rob and Trenton Shuff.



Three of the Shelby participants are pictured here. From left are Vicki Blackwell, Danette Logue and Tina Coleman.



Luminarias were placed around the track, each one memorializing someone who died of cancer. Here, a volunteer puts one in place. When lighted at dusk, they cast a glow around the field.

# Thinking of insulating? Do your homework first

If the economic crash that lasted from 1929 until the beginning of World War II was known as the Great Depression, then the approach of fall and the winter that inevitably follows might well be known as "the not-so-great depression."

As the leaves begin to turn and as summer tapers off into autumn, many of us again begin thinking about how difficult it was to heat our homes last year. If you're included in that group, you may be wise to look at the possibility of adding insulation to your home.

Many homes, especially rural ones, were built before the energy crunch of the early 1970s, when fuel was cheap and it was a snap to warm a home: you just turned up the thermostat. The cost amounted to little more than pin money. Insulation was considered an unnecessary expense and was often installed in bare minimum quantities, if at all.

With the rude awakening that came with the Arab oil embargo also came the realization that jogging up the old thermostat had some very real consequences on the energy bill.

But a lack of insulation is usually not the only culprit. Older homes were also built less "tight" than newer ones, simply because it was easier for the builder. Again, heating was no problem. You just added cheap heat.

At any rate, most older homes need both more insulation and tightening up before they'll be both comfortable and affordable to heat.

If you want to build a new

house or addition, it's a fairly simple matter to have insulation installed as construction progresses, and that's by far the best bet. If you're even thinking of building, be sure to emphasize to your contractor that you want plenty of insulation and that you want your home sealed well, too.

This column deals primarily with those who need to have insulation added, and assumes that the easy installation during construction is not an option.

Please note that it's the R-value that counts, not just the thickness of the insulation.

At any rate, if you're adding insulation in an attic, you may have the option of putting

in fiberglass or mineral wool batts (long rolls), or you can have loose-fill insulation blown in.

If you need to add insulation to existing walls, you may be limited to loose-fill insulation, since it comes in bags and can be blown into spaces using special equipment. On outer walls, the installer simply drills a hole in each stud cavity and blows in a certain amount of insulation. Then he reseals the hole.

There are three kinds of loose-fill insulation, and your co-op representative will tell you of his preferences. The first is mineral wool, which is spun smelter slag. Fiberglass is much like it,



but is spun from molten glass. Both are about equally environmentally benign, and both have similar properties.

Many experts like cellulose insulation, since it does a good job and uses recycled materials that might otherwise be wasted or wind up in landfills. Cellulose is made from finely chopped paper or cardboard, which is treated for fire retardance and to repel insects.

Installation of some insulation products is beyond the capability of the less handy, but may be a viable option for a home handyman. If you decide to try it, be sure to wear a good respirator, goggles, and suitable clothing. The stuff tends to fly everywhere, and it's extremely uncomfortable if you get much of it on you.

You may want to talk to the people at your co-op. Ask them for a copy of the booklet, "A Builder's Guide to Energy Efficient Construction Standards." While it's intended to spell out ways to build a new home so it'll be as energy efficient as possible, it has a lot of good information for those who just need to caulk, weatherstrip and insulate. It's a good publication, and it's free.



# Easy, inexpensive ways to winterize your house

If you're worried about how "winter-ready" your house is, but don't have a lot of money to spend, the U.S. Department of Energy recommends the following easy and inexpensive ways to winterize your house. While these recommendations won't solve all your problems, they will help you ensure that you are doing everything you can on a limited budget to keep your family warm and cut your heating bills.



First, draft-proof windows, doors and other air leaks:

- Test your windows and doors for air-tightness (a cold windy day is a good time to check for leaks). You can find many air leaks by feeling with your hand around windows and doors.

- Caulk and weather-strip doors and windows with air leaks. You can do it yourself, and it is cheap. Materials cost \$40 to \$50 for the average house (12

windows and two doors). This small investment can result in cutting annual energy costs by up to 10 percent.

- Look for other air leaks through openings where plumbing or electrical wiring goes through walls, floors and ceilings. Check for drafts from electrical outlets, around ceiling fixtures and at attic openings. Seal cracks or holes; close fire-place dampers.

Storm windows will stop air leaks and drafts and are a big help in saving energy. However, if you cannot afford the investment, there is an alternative:

- You can install heavy-duty, clear plastic sheet on a frame at a cost of about \$10 to \$15 per window.

- A less expensive option is to use clear plastic film, which can be taped tightly inside the window frames, at a cost of about \$ 10 per window.

- Adding storm doors should also be considered.

The savings with storm windows, doors or the use of plastic? You can reduce space-heating costs by as much as 15 percent per year.

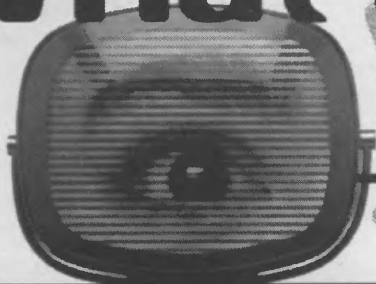
Adding insulation to your house is another option, but if you are on a very tight budget, even a few hundred dollars may be too much. However, if you think you might be able to afford insulating at least part of your home, you can reduce annual cooling and heating costs by 20 to 30 percent. For help, talk to an insulation dealer, local building inspector or county agent.

Do you need more information about quick, easy and efficient ways you can winterize your house and save money? Call your electric cooperative for help. Your co-op will be glad to help you because your co-op exists to provide you with electricity at the lowest possible cost and in the most efficient manner possible.

## Shelby Electric Cooperative welcomes new members

<b>Name</b>	<b>City</b>	<b>Name</b>	<b>City</b>
Dawn Korf	Rochester	Ricky D. Reber	Shelbyville
Ida Belle McDonald	Shelbyville	Christopher A. Wright	Taylorville
Bill H. Smith	Pana	William L. Blaney	Herrick
Rita Soto	Decatur	Jeffrey L. Price	Shelbyville
Delores M. Sinclair	Cowden	Lee Mendenhall	Edinburg
David L. Turner	Bethany	Charles A. Smith	Assumption
Tilton Farms	Dalton City	New Life Evangelistic	St. Louis, Mo
Ella L. Gibson	Beecher City	Christal L. Sherman	Stonington
Tim Wood	Oconee	Jason A. Foor	Cowden
DeeAnna Richardson	Charleston	Mindy Trueblood	Cowden
Dean Sheppard	Shelbyville	Tim Randall	Lakewood
Jason Head	Edinburg	Robert Matthew Cloe	Lakewood
Gary L. Adams	Bloomington	Karen Compton	Tower Hill
Tim Bush	Shelbyville	Mike Orris	Bethany
Bill Miller	Moweaqua	Harold R. Jones	Taylorville
David C. Good	Moweaqua	Judith K. Hall	Decatur
Larry Beitz	Stewardson	Patsy M. Clavin	Ohlman
Glen O. Webb	Shumway	Equilon Pipeline Co. LLC	Argo
Mary Biehler	Shelbyville	Joshua A. Crowe	Stonington
Timothy Stepp	Taylorville	Lori Sunderland	Stonington
Dave Daugherty	Rochester	Steven R. Selby	Tower Hill
Mary Jo Riley	Decatur	Timothy L. Ingram	Windsor

# What are you looking at?



More of what to watch for – this month on DIRECTV® November 1998

## A unanimous vote for political excitement Congressional election coverage heats up

How will the recent presidential scandal affect this year's elections? Will the Democrats gain or lose in the House of Representatives? Find out with continuous coverage of this year's congressional elections on DIRECTV.

Tune into MSNBC (ch. 276), Headline News (204), and CNN (202) for the latest voting results. Follow each candidate vote by vote to victory or defeat on CNBC (275), Fox News Channel (278), and Newsworld International (279). And stay in touch with the pulse of public opinion surrounding all the

issues with C-SPAN (271) and C-SPAN2 (272). As the race for Congress fuels national debate over topics like family values, Social Security, health care and education, you will be able to follow how Americans and incoming lawmakers view each issue. DIRECTV's news channels are your key source for up-to-the-minute information about the national events that touch your life.

What will be the outcome of this year's congressional elections? Tune in for continuous coverage – before, during and after the votes are tallied.



This newsletter, for DIRECTV subscribers only, is brought to you by:

**SHELBY ELECTRIC  
COOPERATIVE  
217-774-3986  
SHELBYVILLE, ILLINOIS**



## CHANNEL CHOOSER



### Take off for TV Land on DIRECTV

*Nick at Nite's TV Land is a get-away into the best of shows past*

Nick at Nite's TV Land (ch. 251) offers classic sitcoms, dramas, westerns, and variety shows from the 1950s through the '80s. The channel also airs "retromercials" - classic television commercials. Regular shows include "Gunsmoke," "Hill Street Blues," and "The Ed Sullivan Show." By selecting only hit shows from years past, Nick at Nite's TV Land offers a line-up of proven high-quality entertainment for the whole family.

**For all of your Liquid Propane (LP) needs call**

**(217) 774-2311      (800) 677-2612**



# Shelby Electric News

SHELBY ELECTRIC COOPERATIVE 217-774-3986 SHELBYVILLE, ILLINOIS

*Your Total Energy Supplier*

## Across the Manager's Desk

*By Jim Coleman*



## Deer hunting 101

By the time you get this issue of the Illinois Country Living Magazine we will be halfway through this year's annual exodus to the woods otherwise known as deer season. Many hunter have actually convinced their wives that their departure to the woods is a time-honored tradition in the name of their forefathers to go and gather food for the family table. The real truth of the matter is that most hunters are just looking for an opportunity to carry a gun in the woods for a little while then head back to the cabin for eating, drinking and laughing it up with the boys for a couple days. If we actually happen to bag a deer, we have to go to the trouble and expense of having it processed. The only reason our wives don't have any problem letting us go hunting is because they figure we'll probably never get a shot thereby not shooting ourselves in the foot. Spouses honestly don't mind getting rid of us for a few days so they can have some peace from all the whining.

### Typical hunting methods:

There are basically three (legal) tried and true methods for bagging a deer:

- 1) Stand hunting
- 2) Still hunting
- 3) Driving (This does not mean hunting from your truck)

**Stand hunting:** Most hunters like to get high above the game they are seeking by erecting permanent wooden structures a few days before season. Emboldened by the vision of the big ten pointer that will walk to within 30 yards of the stand and stop broadside to graze on the forage available, (like that fifty pound bag of deer bait some other hunter accidentally dropped on your trail). The hunter knows that the deer are too stupid to notice the

appendage that miraculously grew out of this tree overnight and smells like paint. On opening day the hunter struggles to his fortress in the sky and stays there scanning the woods below for at least an hour before deciding that he put the stand up in the wrong place and vacates the stand making enough noise to push the nearby deer to his fellow hunters who haven't given up yet forcing them to shoot, drag, and pay for processing.

Other hunters who are too lazy to lug wood and build a stand opt for portable stands which will allow the hunter to move the stand when necessary to get to where the deer are. A portable can be carried in on the morning of the hunt to a predetermined tree and after 30 to 40 minutes of noisy extreme effort puts the sweat-dripping hunter above his prey, allowing the wind to carry his sweaty stench further into the wood terrifying the deer and possibly another hunter. The portable hunter usually lasts a little longer in the tree since he had to work so hard to get there. On a cold day as the sweat turns to ice on his skin as it evaporates, the hunter climbs down for fear that he'll lose all feeling and not be able to get down later. Typically through the course of the day these hunters nearly always drop something out of the stand like their gun, and are forced to get down anyway.

If possible, stay in your stand beyond the normal hunter evacuation period. Many hunters depart the woods around ten o'clock and drive the deer everywhere in their effort to get to their vehicles. This accidental drive can move the deer to a patient hunter.

Meanwhile the departing hunters are anxious to get to their 4x4 trucks so they can drive to town with the orange afterglow of their hats and coats letting everyone in sight know that they are hunters on a mission. The immediate mission is to get to the nearest coffee shop for breakfast and gossip kill stories. These hunters fail to notice all the cooking smells are now embedded in their clothes so that when they return to their stand just before dark all the deer in the county know where they are. This is not a bad thing; Another tale presents itself for back at camp when the returning hunter accidentally jumps a ten pointer that was sleeping under his stand. (more likely a crippled doe) but who's to say.

*Continued on page 16b...*

**Continued from page 16a...**

**Still hunting:** This method could be described as playing hide and seek with the deer. This involves moving slowly through the woods to sneak up on a deer before it sees you and shows you the big white sign on it's bottom as it bounds off. The key word here is "still" since most hunters move way too fast in this type of hunting or stalking. Unless you are being passed by land turtles on your quest for a trophy you're moving too fast. A good rule of thumb is to take a step, recite the Gettysburg address, then repeat. Other signs of moving too fast include jumping a bedded deer or if all the wood around you echoes with shots because your deer, desperate to get away, ran to other lucky hunters. The stalker's concern is to move through the timber unnoticed in order to slip up on a deer. Remember the deer live here all year so be patient.

Many hunters believe they need to move silently. Actually the woods is a pretty noisy place with all the critters going about their daily business of staying alive and the hunter really only needs to make sounds that emulate the noises already going on around them. The worst days to still hunt are the really cold crisp days when all the leaves and twigs snapping sound like rifle shots for half a mile. If deer laugh I can imagine it would be hilarious to see a hunter trying to work quietly through the woods on a day like this. The deer would have to be rolling around laughing. The really good days to still hunt would be foggy moist days with a little mist of rain. This combined with the regular noise could give the hunter a fighting chance to bag a deer.

**Driving or Pushing:** The typical hyperactive hunter who climbs down from his tree stand before the squirrels wake up is anxiously looking for buddies to drive deer by 9 am. A circus of orange-clad hunters ensues stomping through the woods with guns at the ready in hopes of jumping a deer from its day bed. The typical drive scenario involves making a foolproof plan where some hunters position themselves in anticipated escape routes at

the opposite side of the woods and then at a designated time, an army of fellow hunters begin walking toward the sitters making lots of noise. The concept being to move any available deer to the sitters at the other end and hopefully tag a deer. As Murphy's Law applies to deer hunting the hunters seldom pick the correct escape and the only deer that flee along known trails are the yearlings that are all legs and fur. The experienced deer that have been through this before either lay down and wait for the hunters to pass or slip quietly out through a brush-covered trail that the hunters had failed to notice.

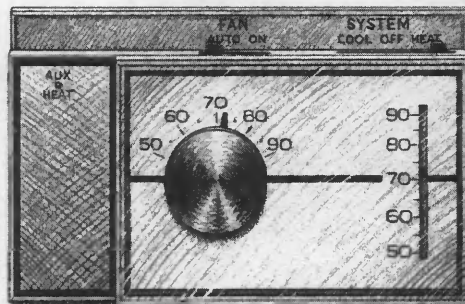
As the pushers get closer to the sitters they themselves can become targets of an inexperienced anxious hunter if they are not careful. Given an overdose of adrenaline some hunters will shoot before thinking, which can create hard feelings at camp later. There is an unwritten deer hunter rule that applies more to the driving method than to other types of hunting. Before the hunter kisses his wife and heads for the great outdoors he double-checks his life insurance policy.

**Conclusion:** Dedicated hunters will scout their intended hunting area well ahead of season. The hunter will establish a good place to shoot from that affords good visibility in several directions. It is a good idea to layer clothing to insure comfort, which should translate into an extended stay in the timber and greatly improving the chance to see deer. I only know one man that ever shot a deer from the front door of the cabin. Since only one in five permits are filled on average in Illinois, a true hunter must have a solid understanding of firearm safety, knowledge of the area to be hunted and it wouldn't hurt to know a little about deer patterns.

Any hunter that is on private property must obtain permission from the landowner and to respect the land he is using. Following up the season with a letter of appreciation to the landowner often assures future approval for more hunting.

## Think of it as the gas pedal in your car

You know what happens when you constantly speed up and slow down, or run your car at high speeds. You use a lot more fuel. The same is true of your heating system thermostat. Constantly changing your temperature setting consumes more energy. Setting it on high temperatures drastically increases your electric bill. So, pick a comfortable setting – between 68 degrees and 72 degrees; set it and forget it. You'll be comfortable, and you'll get a lot more hours of heat per dollar.



## IEC Memorial Scholarship Fund

The Illinois Electric Cooperatives Memorial Scholarship Fund established by the Association of Illinois Electric Cooperatives (AIEC), Springfield, Illinois, offers two \$ 1,000 scholarships each year to high school seniors. The AIEC board of directors created this memorial fund in January 1994, to honor deceased members of the electric cooperative family throughout Illinois.

Winners are required to use the scholarship to pay educational costs. They must plan fulltime enrollment (at least 12 credit hours) at an accredited two-year or four-year college, university, or vocational/technical school in Illinois, and begin undergraduate studies within a year of being notified they have won.

Scholarships are divided into two categories and the applicant is eligible for only one of the two categories:

- Sons or daughters of members/consumers: Shelby Electric Cooperative will evaluate all entries and submit the best application to the IEC Memorial Scholarship Committee for judging.

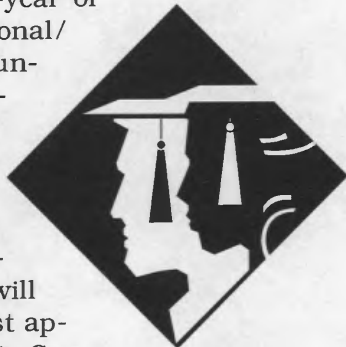
- Sons or daughters of employees/directors: All applications will be forwarded directly to the IEC Memorial Scholarship Committee for judging.

Scholarships are awarded on grade point average, college entrance test scores, work experience, volunteer service, participation in school and community activities, biographical statement and knowledge of electric cooperatives as demonstrated by a short essay.

The scholarship committee will review all applicants and select the semifinalists. The Northern Illinois University scholarship selection committee will select the winner in each category based on criteria supplied by the IEC Memorial Scholarship Committee.

Deadline for receipt of completed applications and submissions is Jan. 1. Scholarship winners will be notified by May 1. Scholarships are for one year and are not renewable.

For more information concerning the (IEC) Memorial Scholarship Fund, please contact Chris Spears at Shelby Electric Cooperative. Applications can be obtained at the high schools in the cooperative service area and also at the cooperative's headquarters in Shelbyville. Anyone interested in making a tax-deductible donation to the (IEC) Memorial Scholarship Fund may contact Don Wood at the AIEC in Springfield. The telephone number for AIEC is (217) 529-5561.



### Making someone's Christmas a little brighter

The holiday season is a time for giving and Shelby Electric needs a little help. The cooperative will be collecting canned goods Dec. 1<sup>st</sup> - Dec. 18<sup>th</sup> to build a "Christmas" tree. Just before Christmas the canned goods will be donated to the agency that is in charge of the food baskets for the needy. As you stop by the office, please bring one or more cans of food along. You can drop them off in either the Shelby Electric or the Shelby Energy/DirecTV lobby. Hopefully, we will be able to "grow" more than one tree.



### Office closings

**Our office will be closed on Thursday, Dec. 24<sup>th</sup>, and Friday, the 25<sup>th</sup>, in observance of the Christmas holiday. We will also close on Friday, Jan. 1<sup>st</sup>, for New Year's Day.**  
*Enjoy your holidays!*



## Up on the rooftop... so you can click, click, click

There's no better way to channel surf than with a mini-dish satellite system from DIRECTV. With over 200 channels, including up to 50 movie choices every night, DIRECTV gives you the gift of superior variety. Call today for the best in home entertainment for the holidays.

**Shelby Electric Cooperative**  
**Mon. - Fri. 7:30 a.m. to 4:30 p.m.**  
**(800) 677-2612      (217) 774-3986**



DIRECTV is an official trademark of DIRECTV, Inc., a unit of Hughes Electronics Corp. © 1998 NRTC.