

**BARGAIN  
BREAKTHROUGH**  
*Business Opportunity*

**4 Million Shallow Wells  
at \$5 to \$25 per foot  
Needed Now!**

### Big Market for Small Wells

30,000 backyard water wells and 120,000 shallow heat pump wells are needed in 1986. New EPA regulations require millions of small diameter monitor wells in the next 36 months.

Here's an all-new, easy-to-use "subcompact" drill for shallow, small diameter well drilling.

We call it the **DR 200**  
You'll call it a...

**BARGAIN  
BREAKTHROUGH**  
*Business Opportunity!*

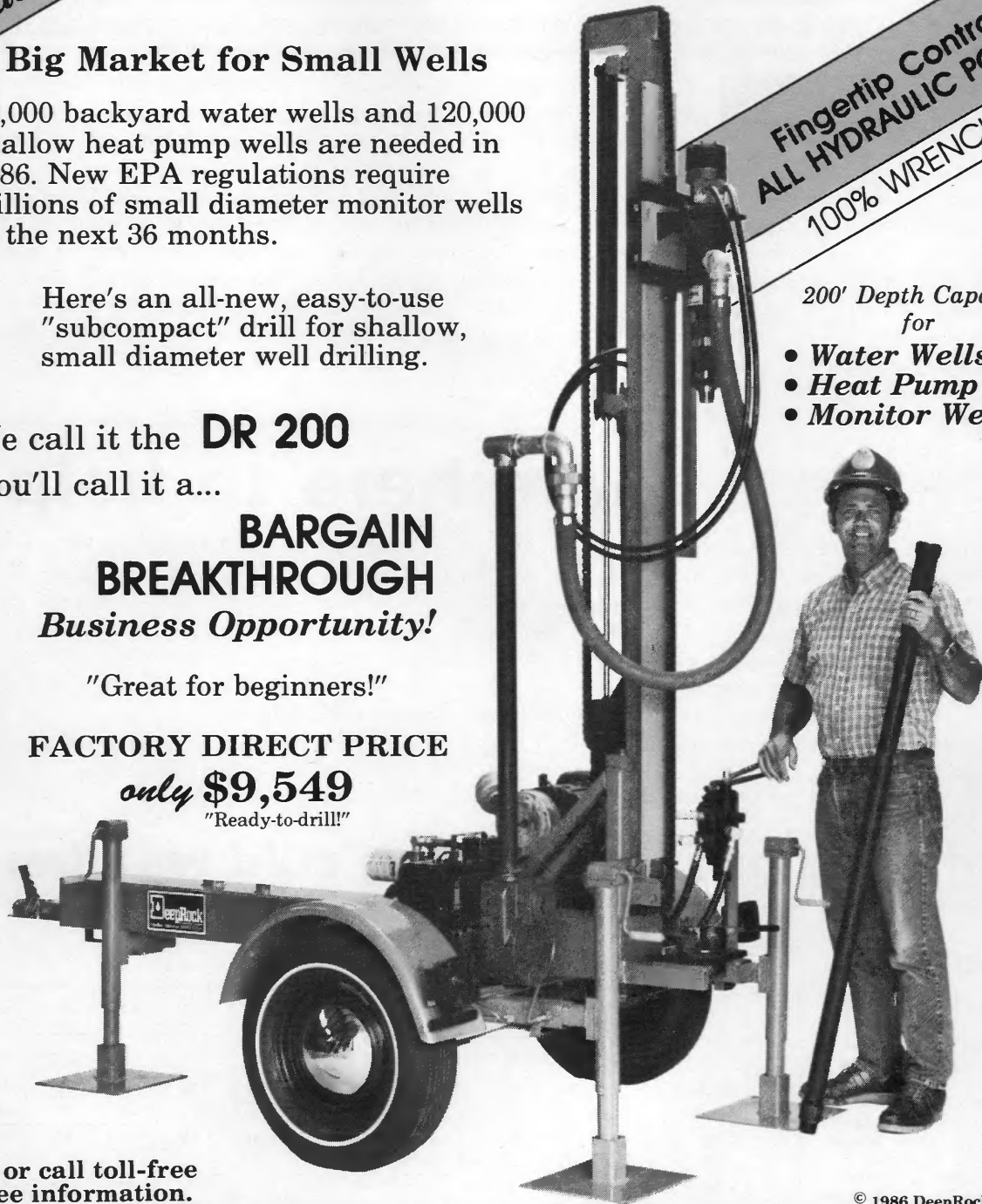
"Great for beginners!"

**FACTORY DIRECT PRICE**  
*only \$9,549*  
"Ready-to-drill!"

**Fingertip Control  
ALL HYDRAULIC POWER  
100% WRENCHLESS!**

200' Depth Capacity  
for

- Water Wells
- Heat Pump Wells
- Monitor Wells



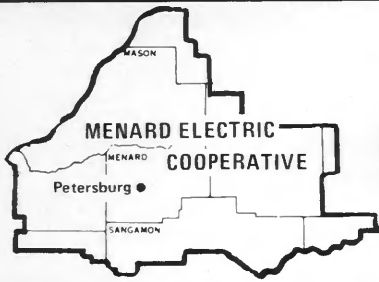
Write or call toll-free  
for free information.

© 1986 DeepRock Mfg. Co.



**COMMERCIAL DRILL DIVISION  
DEEPROCK MANUFACTURING COMPANY**

5941 ANDERSON ROAD, OPELIKA, AL 36802 • TOLL-FREE 800-633-8774 ext. 5941.  
*The world's leading manufacturer of low-cost water well drills since 1962.*



# Menard Electric News

MENARD ELECTRIC COOPERATIVE 217-632-7746 PETERSBURG, ILLINOIS 62675

## Co-op Comments

Alvin Bertram of rural Middletown will complete 30 years of employment with your Cooperative on January 16. Alvin is the area serviceman in the Mason City, Middletown, Greenview and Elkhart area.

Mr. and Mrs. Meredith Worner of rural Manito will celebrate their 30th wedding anniversary on January 28. Meredith is a director of your Cooperative in the Manito-Forest City areas.

A number of members of the Cooperative received a questionnaire in the mail this fall. The survey addresses the subject of "Energy and Rural Living in Illinois" and is seeking information of a general nature with a focus on such subjects as your evaluation of your electric cooperative, energy usage, and service quality.

The center at Sangamon State Uni-

versity in Springfield is receiving all responses. Compiling of the data will take place at SSU and only the compiled results will be provided to Menard Electric. If you received a survey form and completed the same, we thank you for your participation. The results of the survey will be used as a tool by your board of directors to insure the greatest possible involvement of members in the activities of your Cooperative.

Length-of-service awards were recently presented by manager John E. Root and Morris Bell, president of the board of directors. Receiving a five-year award was Darlene McGee; 15-year awards went to Evelyn McLaughlin and Terry Entwistle; a 25-year award went to William McCoy; John E. Root, manager, received a 30-year award, and David Atterberry was recognized for 35 years of service.

## We're here to help

High winter heating costs can be a terrible burden to a family trying to live on a budget already stretched to the limit by rising prices for other essential items such as housing and food.

If your family is struggling to make ends meet, don't put off paying your monthly electric bill past the deadline. Contact us ahead of time to review the

federal and state programs that may be available to help low-income families and senior citizens through the high-cost heating months. We'll be glad to put you in touch with the proper agency to determine if you qualify for assistance.

After all, as a cooperative, we're owned by those we serve.

## Wind a major factor during cold weather

### Watch wind chill factor

To use the chart, find the estimated or actual wind speed in the left-hand column and the actual temperature in degrees F. in the top row. The equivalent temperature is found where these two intersect. For example, with a wind speed of 10 mph and a temperature of -10 degrees F., the equivalent temperature is -33 degrees F. This lies within the zone of increasing danger of frostbite, and protective measures should be taken.

Estimated Wind Speed MPH	ACTUAL THERMOMETER READING °F.											
	50	40	30	20	10	0	-10	-20	-30	-40	-50	-60
	EQUIVALENT THERMOMETER °F.											
Calm	50	40	30	20	10	0	-10	-20	-30	-40	-50	-60
5	48	37	27	16	6	-5	-15	-26	-36	-47	-57	-68
10	40	28	16	4	-9	-21	-33	-46	-58	-70	-83	-95
15	36	22	9	-5	-18	-36	-45	-58	-72	-85	-99	-112
20	32	18	4	-10	-25	-39	-53	-67	-82	-96	-110	-124
25	30	16	0	-15	-29	-44	-59	-74	-88	-104	-118	-133
30	28	13	-2	-18	-33	-48	-63	-79	-94	-109	-125	-140
35	27	11	-4	-20	-35	-49	-67	-82	-98	-113	-129	-145
40	26	10	-6	-21	-37	-53	-69	-85	-100	-116	-132	-148
Wind Speeds greater than 40 MPH have little additional effect	LITTLE DANGER FOR PROPERLY CLOTHED PERSON			INCREASING DANGER				GREAT DANGER DANGER FROM FREEZING OF EXPOSED FLESH				

# Rate adjustment effective next month

ME

Energy bills rendered on February 28 will reflect a revised rate structure that was adopted in December 1985 by your board of directors. It will apply to energy used after the January meter readings.

The new rates will include the third of the three-step equity funding plan, which we have discussed several times in the past. This rate is not designed to increase the Cooperative revenue from which margins are maintained at a TIER of 2.0 or more, but in fact, reflect a reduction in the TIER for the Cooperative to approximately 1.5.

Heretofore, a power cost adjustment (PCA) factor has been added to your monthly energy bill and it is anticipated that in 1986 the PCA will, in fact, be zero. In addition, the Illinois public utility tax will be based on .32 of a cent per kilowatt-hour in lieu of 5 percent of each \$1 cost. Your electric bill format will remain the same during 1986 with the exception of the anticipated power cost adjustment factor of zero and the tax will be shown as a separate dollar and cent item.

Another important change in Schedule "A" — Farm and Residential Service will reflect a spring/fall rate for March, April, May, June, October and November and a summer/winter rate for the months July, August, September, December, January and February.

A new Commercial and Power Service Rate for single-phase service has been established. In the past it was part of the Three-phase Commercial and Power Service Rate.

In addition, a new Load Management Service Rate has been established for large power users.

Your board and staff have worked hard to minimize these increases for Menard Electric Cooperative members. The total average increase is projected to be less than 10 percent for all Cooperative rates. As indicated in the past, the adjustments effective in February are an attempt to minimize the impact of substantial wholesale power cost increases in the coming years. The new rates will also provide flexibility to members in the use of electricity to

keep their bills as low as possible.

In order that you may examine the Farm and Residential Rate for its approximate effect on your monthly usage, a summary of Schedule "A" (Farm and Residential) follows:

Service Charge . . . . .	\$16.00
Energy Charges — Spring/Fall (March-June, Oct. & Nov.)	
First 200 kwh . . . . . at 14.5 cents per kwh	
Next 500 kwh . . . . . at 11.8 cents per kwh	
Next 800 kwh . . . . . at 9.1 cents per kwh	
Over 1500 kwh . . . . . at 7.9 cents per kwh	
Service Charge . . . . .	\$16.00
Energy Charges — Summer/Winter (July-Sept., Dec.-Feb.)	
First 200 kwh . . . . . at 14.5 cents per kwh	
Next 500 kwh . . . . . at 11.8 cents per kwh	
Over 700 kwh . . . . . at 11.1 cents per kwh	

The above charges are subject to the State of Illinois utility tax (.32 cent per kwh) and a wholesale power cost adjustment, should it be required.

All rate schedules of the Cooperative have been revised and are available upon request.

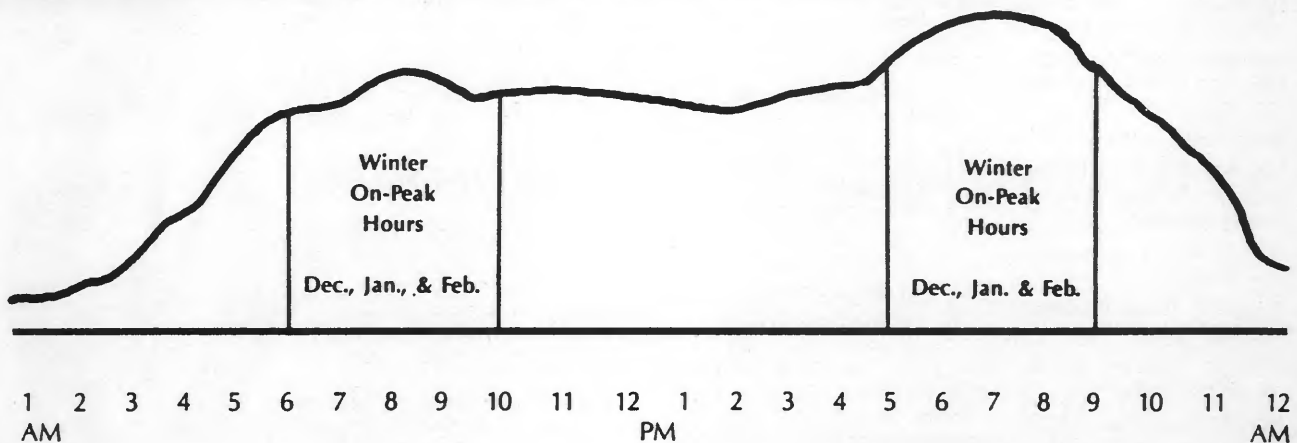
The security light service has also been adjusted slightly. A 6,000-lumen mercury vapor lamp will be \$7.95 a month. Charges under this schedule are also subject to the prevailing Illinois public utility revenue tax.

For further information with reference to the adjustment of the Cooperative rates, we invite you to contact the Cooperative office and we will be happy to supply any information you request.

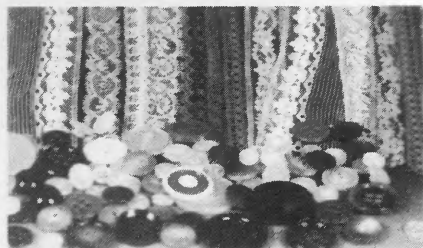
We continue our policy of being forthright with our members and this experience has been rewarded with understanding in the past. It is our hope that this relationship will continue and all our members will know our objective is to achieve every economy possible as we continue to provide you with the essential electric service at as low a cost as possible.

Menard Electric Cooperative

## Typical daily winter demand curves



*This chart shows when our daily "demand" for electricity is highest during the winter months, and how we can help control our costs, since the cost of electricity is based partly on demand. If possible, avoid using heavy appliances during the hours where the curves are highest. It'll help us all keep our bills down.*



## 40 YARDS LACE \$1.75

LACE — LACE — LACE . . . 40 yards of Lace in delightful patterns. Edgings, insertions, etc. Assorted beautiful designs, colors and widths. Pieces at least 10 yards in length—none smaller. Marvelous for dresses, pillow cases, etc. Terrific as hem facing. Only \$1.75 or double orders \$3.35. 3 orders just \$4.95. Pts. include 50¢ pstg. and hding with EACH set of 40 yards you buy. Satisfaction guaranteed! FREE with lace 50 BUTTONS! 50 New, High Quality Buttons. Assorted colors, sizes and shapes. Sent FREE with each lace order. Please allow up to 6 weeks for delivery.

Lace Lady, 1602 Locust St., Dept. BL-697, St. Louis, MO 63103

## FREE NURSERY CATALOG

32 page 1986 Spring Catalog  
**Special Bonus Offers & Coupons**  
 Over 250 varieties of Shade & Flowering Trees, Flowering Shrubs, Fruit Trees - Standard, Dwarf and Semi-Dwarf, Berry Plants, Nut Trees, Evergreens, Vines, Wild Flowers and Perennials. Nursery stock available to you at low grower prices. Over 35 years of reliable customer service. Don't delay - WRITE FOR YOUR FREE CATALOG TODAY!  
**Vernon Barnes & Son Nursery**  
 P.O. Box 250-IL, McMinnville, TN 37110

**Homeowners!**

## No More Overgrown Weeds, Grass, and Brush!

...with Garden Way's amazing new TRAIL BLAZER Sickle Bar Mower!

Mow an overgrown mess like this...



in less than 20 minutes!



- Controls nuisance growth in those areas you want to keep under control — but don't want to mow as often as your lawn!
- Cuts the thickest, toughest, tallest vegetation — including woody brush!
- Goes anywhere — even steep slopes!
- Big 35" wide cut — powered wheels — mows 1000 sq. ft. of overgrown weeds in less than 5 minutes!
- Available only from the makers of the famous TROY-BILT® Tiller!



Send for FREE Details TODAY!

Garden Way Manufacturing Co., Dept. A190  
 102nd St. and 9th Ave., Troy, NY 12180

YES! I want to know more about the amazing TRAIL BLAZER Sicklebar Mower! Please send me a complete FREE INFORMATION package, including prices, models, special SAVINGS OFFER, and No-Money-Down Payment Plan.

Name \_\_\_\_\_  
 Address \_\_\_\_\_  
 City \_\_\_\_\_  
 State \_\_\_\_\_ Zip \_\_\_\_\_



# SOTZ MONSTER MAUL

**FAST-N EASY WOOD SPLITTING**  
**HIGH STRENGTH STEEL HANDLE**

AS LOW AS **\$14.95**

FACTORY PICK-UP

Our 29th Year

- Ends broken handles, stuck axes and flying wedges.
- Hardened splitting edge lasts and lasts. Resists de-forming.
- Splits most logs in one lick.
- No struggling lifting heavy logs up to high priced power splitters.
- No gasoline, no set-up, no takedown.
- Shape of head prevents sticking.
- Drop'em, saw'em, stand'em up and split'em.
- No gimmicks, just simple physics.

	GUARANTEE	FACTORY PICK-UP	DEL TO YOUR DOOR
* NEW Professional Maul, handle mounted in silicone rubber, acts as shock absorber. 17 Lbs. ....	25 Years	\$23.95	\$28.95
* Original Monster Maul - over 1,000,000 sold 16 Lbs. ....	10 Years	\$19.95	\$24.95
* Lady's Maul - for smaller logs. 11 Lbs. ....	10 Years	\$17.95	\$21.95
* NEW Economy Maul - Made similar to the imitations that come and go, but priced much less. 12 Lbs. ....	1-5 Years	\$14.95	\$18.95
* Deluxe Cushion Grip, for handle. ....		\$ 2.90	\$ 2.90
* Tree Lift-N-Saw. ....		\$26.94	\$29.97

\$12 Special <sup>SAVE</sup> Discount Coupon  
 BUY ANY MAUL AND LIFT-N-SAW  
 AT THE SAME TIME AND DEDUCT \$12

**TREE LIFT-N-SAW**

Eliminates back-breaking lifting of logs for chain sawing and saves time. Lifts logs up to 16" in diameter, any length.

VISA or MASTERCARD RUSH ORDERS  
 CALL TOLL FREE 1-800-321-9892  
 Inside Ohio 1-216-236-5021  
 or SEND CHECK OR MONEY ORDER  
 Sorry No C.O.D.'s

"NOW" ALSO MADE IN CANADA  
 Prices: Call Toll Free 1-800-465-3333 or write:  
 "SOTZ" P.O. Box 1000 Dept. 07-86  
 Ear Falls, Ontario POVITO

Sotz Inc., 13668-J5 Station Rd., Columbia Station, OH 44028





## Livestock operations may benefit from Choremaster

**G**iven the proper use, electric vehicles may have a place on the farm, and they may even be able to reduce equipment costs, according to Les Christianson, a new member on the University of Illinois Agricultural Engineering staff. Christianson comes from South Dakota State University, where he was one of the project leaders in designing and testing an electric vehicle for agricultural use. Electric cooperatives supported the project through funding by the National Rural Electric Cooperative Association Research Fund.

Beginning in 1979, Christianson and other South Dakota State staff members designed three models of the "Choremaster" — an electric tractor that is best suited to farm chores, not field work.

He says that dairy, beef, swine and poultry farmers would have the most interest in electric vehicles because these farmers need a farm chore vehicle approximately 300 days out of a year. A grain farmer, on the other hand, may only need a chore tractor 30 to 70 days out of a year, which would not make it economical.

The initial cost of an electric tractor is about 10 to 15 percent higher than a diesel-powered tractor. However, Christianson says that energy savings, a longer vehicle life and reduced

maintenance with an electric vehicle more than offset this initial higher cost.

In fact, in one comparative study, South Dakota researchers found that if you considered all expenses over a vehicle's lifetime (including initial costs), the electric vehicle saved almost \$2,000 per year over the diesel vehicle.

Other advantages of the electric vehicle, he adds, are less noise, an absence of noxious fumes for in-building use, ease of starting and less dependence on one energy source.

The 4,000-pound battery in the electric Choremaster was able to power the vehicle for about 15 miles of stop-and-go driving under different load conditions before it needed to be recharged, Christianson says. This equals about four hours of tractor chores on typical farms.

When moving packed snow in 20- to 30-degree Fahrenheit weather, the tractor operated for about three and one-half hours, and cold conditions did not affect the battery's capacity.

In -20 degree F weather, the battery also performed well, but the hydraulic fluid and valves performed poorly and the instruments for measuring energy usage malfunctioned. In this case, however, Christianson notes that the battery was not insulated and the vehicle sat out overnight.

Although the electric vehicle is a new concept in American agriculture, the idea of a battery-powered car is an old one, dating back to 1847.

By the 1900s, electric car manufacturers were generating about \$18 million of business per year in the United States alone; but then came the decline. Gasoline-powered cars replaced electric cars, leaving electric vehicles with specialty jobs, such as milk delivery, mine work and forklift operation.

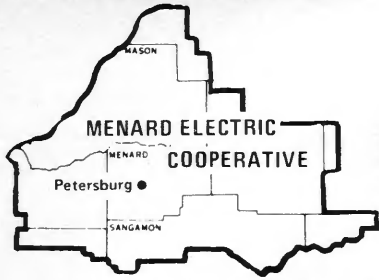
It was not until the oil embargo of 1973 that interest picked up once again and money was channeled into electric vehicle research.

In Europe, Christianson says, electric vehicles have been widely used for milk delivery since the 1930s; and they have been used in those European cities where combustion vehicles are banned due to pollution concerns.

Because European farms are not as large as those in the United States, researchers there also are developing an electric tractor that is practical primarily for field work.

In the United States, meanwhile, the interest seems to be present for an electric farm chore tractor, Christianson says. In a South Dakota survey, dealers, Extension agents and farmers were all receptive to the idea.

For example, the dealers surveyed estimated that the electric Choremaster could replace 32 percent of their sales of tractors (below 100 horsepower) to dairy operators, 29 percent of their sales to beef operators and 34 percent of their sales to swine operators.



# Menard Electric News

MENARD ELECTRIC COOPERATIVE 217-632-7746 PETERSBURG, ILLINOIS 62675

## Co-op Comments

Mr. and Mrs. James Bearden will celebrate their 40th wedding anniversary on March 8. The Beardens, from Greenview, are spending the winter in Florida. Jim retired as a cooperative employee on February 2, 1983.

Dale Lepper, of Ashland, a director for your Cooperative, will complete 25 years of service on March 4.

The Cooperative's annual meeting will be held at the PORTA High School on Saturday, June 14, 1986. Why not mark the above date on your calendar and plan on attending the 49th annual meeting of your Cooperative?

Your Cooperative is celebrating its 50th year in 1986. On June 13, 1936, a meeting was held in the old Farm Bureau building located at the southwest corner of the square in Petersburg where a handful of people took steps on that occasion to create the Cooperative and to release the rural people from the drudgery of the kerosene lamp era.

The men and women who met in the Farm Bureau office that night knew the only way they could have electric lights and power was to form an "electric cooperative" of their own.

The Cooperative was incorporated under the laws of the State of Illinois on September 9, 1936, and a few days later the Cooperative secured the approval of its first loan in the amount of \$135,000.

During the year 1986, we will be celebrating the 50th anniversary of the Cooperative, particularly at the 49th annual meeting on June 14.

## Special board meeting addresses high rates

A special meeting of the board of directors of Menard Electric Cooperative was held at the headquarters, in Petersburg on Monday night, January 13, to hear comments and suggestions from Lewis Powell and John Luthringer, both members of the Cooperative. The discussions in the meeting centered around the high electric rates of the Cooperative and the sharing of ideas on what is being done and what could possibly be done to improve the cost of power to the members of the Cooperative.

Both Luthringer and Powell expressed their desire to work with the board of directors in pooling ideas and resources to work for the common good of the total membership.

An open discussion and exchange of ideas was conducted with regard to evaluating the economic study of the consequences of withdrawal from Western Illinois Power Cooperative, as requested by resolution of the members at the 1985 annual meeting.

In-depth discussions were also held concerning the possibility of negotiat-

ing more favorable interest rates from REA or WIPCO loans and the possibility of withholding and placing in escrow the equity funding included in the wholesale power bill and passed on to consumers of the Cooperative.

At the conclusion of this discussion on the financial matters of the Cooperative, the board of directors took appropriate action to call a meeting of the Economic Study Committee to hear a progress report, and a committee was formed consisting of Robert F. Zook, Dale R. Lepper, James G. Graff, Earl L. Pillsbury, John E. Root, John Luthringer and Lewis Powell to determine a plan of public and membership participation in influencing legislators by a letter campaign and other methods when appropriate objectives and methods are agreed upon to ask for assistance in improving the retail rates of the Cooperative.

The first meeting of the above committee was held on February 3. Further information will be given through this media, as it becomes available.

## Outdoor use of electric tools calls for special caution

When working outside, don't use electric tools in the rain or on wet surfaces. Using an electric lawn mower on wet grass is dangerous.

Use fixtures that are weatherproof and designed for outdoor use.

Use electric hand tools that have a ground or are double-insulated.

When putting up an antenna, locate it where it cannot touch or fall on

power lines.

Outdoor wiring should have its own circuit breaker or fuse, and be designed to keep out moisture. A ground fault circuit interrupter is required on all new installations.

Cords should be kept out of water and hung only over wooden pegs, never metal ones.

# Landscaping can save energy dollars

Optimum use of landscaping design, by planting trees and shrubs around your house, can reduce the energy consumption for heating and cooling by as much as 25 percent.

To effectively reduce heating and cooling requirements of a house, landscaping must be designed to (1) shade windows during the summer to prevent solar radiation from entering and also permit winter solar radiation to enter the home, (2) shade the roof, walls, and foundation of the building envelope in the summer to reduce the solar heat gain thus reducing the cooling load, and allow the winter sun to strike the roof, walls and foundation to increase the solar radiation exposure to reduce the heating load, (3) reduce the velocity of the winter wind before it can strike the building envelope thereby decreasing heat loss through air infiltration and, (4) permit or attempt to channel the summer winds to optimize cross ventilation and reduce cooling costs.

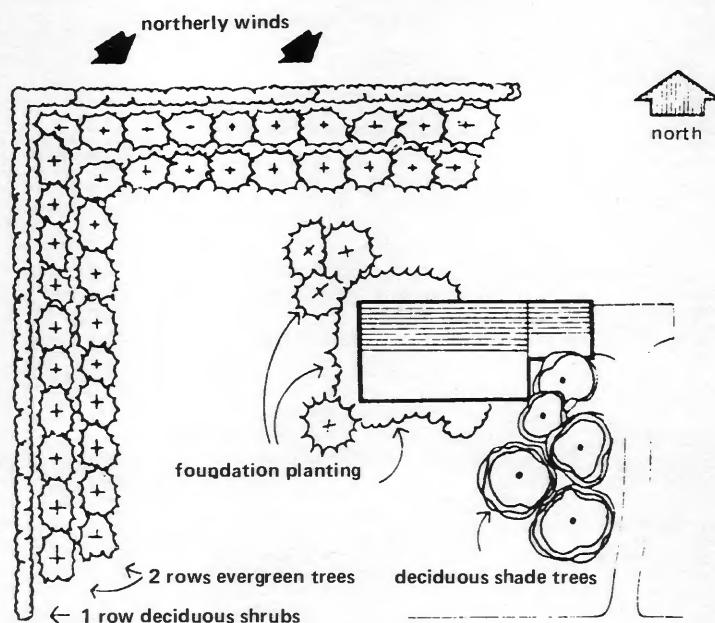
**Wind Control** — Studies show that windbreaks reduce fuel consumption. The amount of energy saved by planting a windbreak around your home will depend on your climate, on the location of your home in relation to surrounding physical features, and on how well the house has been constructed. Windbreaks with two to five rows of trees and shrubs generally provide good protection. The height, leaf density and number of trees will determine the amount of protection. Evergreen trees provide the best protection, however, low-spreading deciduous trees also reduce wind speed considerably. Plant evergreens close together for maximum effectiveness. Heavy winter winds in Illinois usually come from the northwest, so wind-break trees are generally planted on those sides.

**Sun Control** — Trees are very effective shading devices and can, according to size, shade the entire house from roof to foundation. The best shading effect is usually gained by use of deciduous trees with full crowns, since they allow solar radiation during the winter as heat gain and provide shade to reduce cooling loads. Trees provide

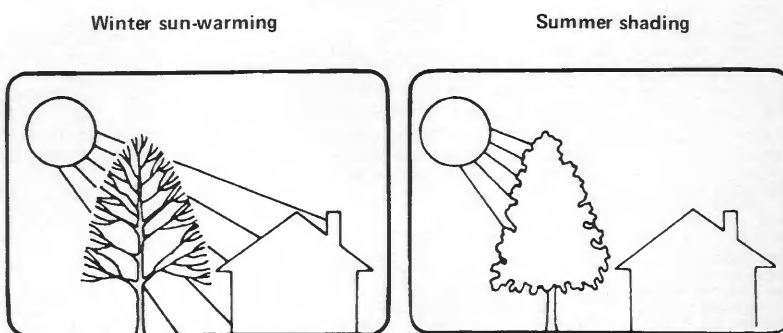
maximum shade when planted in groups.

The lower drawing shows how trees and shrubs affect summer shading and winter sun-warming which help cut heating and cooling costs.

By studying plans, bulletins, books and with the help of your landscaper, architect, builder and financial institution, you will increase your ability to make more intelligent decisions in constructing an energy-efficient house.



A planting plan that would help reduce energy consumption in the house.



The effect of deciduous trees on the south side of the house.

## Dan Morgan is new employee

John Daniel Morgan of Petersburg began employment with your Cooperative on January 2 as a groundman mechanic.

During the past several years Dan has operated his own auto repair shop in Petersburg and has several years of mechanical experience.

He and his wife, Dorothy, have a daughter, Stacey, who attends the PORTA elementary school.

Dan is an avid softball player and has played slow-pitch softball throughout central Illinois. We welcome the Morgans to the Cooperative family.

### THOUSAND ISLAND DRESSING

3/4 cup mayonnaise  
3 tablespoons milk  
1 tablespoon chili sauce  
Combine ingredients. Chill thoroughly. Serve on chef's salad or greens. Makes one cup.

### FRIED PIE CRUST

2 1/2 cups all-purpose flour  
2 teaspoons baking powder  
1/2 teaspoon salt  
2 tablespoons sugar  
Sift dry ingredients together. Cut in shortening. Beat egg with milk; add to dry ingredients. Knead out lightly and wrap tightly. Chill in the refrigerator. Roll dough thin. Fill with cooked dry fruits of your choice. Fry in cooking oil at 375 degrees.

### FRITO SALAD

1 head lettuce, torn in pieces  
2 tomatoes, peeled & chopped  
2 med. onions, chopped  
1 10-oz. pkg. mild cheddar cheese  
chopped in pieces  
2 cans red kidney beans,  
drained & rinsed  
1/4 lb. bag Fritos, crushed  
1 8-oz. bottle French dressing  
Mix first five ingredients well. Just before serving add Fritos and dressing. Mix to blend ingredients.

### MARY'S POTATO CASSEROLE

2 lbs. frozen hash browns, defrosted  
1/2 cup melted butter  
1 teaspoon salt  
1/4 teaspoon pepper  
1/4 cup melted butter  
2 cups crushed corn flakes  
Defrost potatoes, combine in large bowl with melted butter. Add salt, pepper, onion, soup, sour cream, and cheese. Pour into greased casserole dish. Cover with corn flakes mixed with 1/4 cup of butter. Bake at 350 degrees for 45 minutes.

### MAKE AHEAD CHICKEN & RICE CASSEROLE

3 cups cooked rice  
3 cups cooked chicken, chopped  
1 small onion, chopped  
1 2 1/2-oz. jar sliced mushrooms,  
drained  
1/2 cup chopped onion  
1 can undiluted cream of chicken soup  
1 pint sour cream  
10 oz. (2 cups) grated sharp Cheddar  
cheese  
Add all ingredients together, mixing well. Spoon into a lightly greased 3 qt. baking dish; cover and refrigerate for several hours or overnight. Remove from refrigerator; let stand at room temperature 30 minutes. Bake, uncovered, at 350 degrees for 45 minutes. Serves 6 to 8.

### CHEESE WAFERS

1 cup sharp cheddar cheese, grated  
1/2 cup butter  
1 3-oz. pkg. cream cheese  
1 cup pecans, grated  
1/2 cup flour  
1/2 teaspoon salt  
1/8 teaspoon cayenne pepper  
2-3 drops yellow food coloring  
Bring cheese and butter to room temperature. Cream together until fluffy. Add remaining ingredients and mix well. Shape into small balls. Place on ungreased cookie sheet; press with tines of fork. Press a small pecan half into center of wafer. Bake at 350 degrees for 15-20 minutes.

### MEXICAN RICE CASSEROLE

1 lb. ground beef, lean  
1/2 cup bell pepper, chopped  
3 cups onions, chopped  
2 cups canned tomatoes, chopped  
Salt and pepper  
2 6-oz. rolls Jalapeno cheese spread  
1 teaspoon garlic, chopped  
1/4 cup chili powder  
1 teaspoon ground cumin  
1 cup raw rice  
1/2 lb. butter  
1/2 cup grated American cheese  
Brown meat, add onions and bell peppers and simmer 5 minutes. Add tomatoes, chili powder, cumin and salt and pepper to taste. Simmer until liquid is evaporated. Cook rice according to package directions. When cooked, add Jalapeno cheese and butter, stirring until well mixed. In an oven-proof casserole dish, layer half the meat mixture, top with all the rice and cheese mixture, then the remaining meat. Top with grated American cheese. Bake at 350 degrees until cheese melts. Serves 6 to 8.

### RICE AU GRATIN SUPREME

4 cups cooked rice  
1/2 cup chopped onion  
1/2 cup chopped green pepper  
1/4 cup chopped pimiento  
1 10 1/4-oz. can cream of mushroom  
soup, undiluted  
1/2 cup salad dressing or mayonnaise  
2 cups shredded cheddar cheese  
1/2 cup milk  
1 teaspoon salt  
1/4 teaspoon pepper  
Preheat oven to 350 degrees. Combine rice, onions, green pepper and pimiento in a large bowl. Blend soup, salad dressing, 1 cup grated cheese, milk and seasonings in a separate bowl. Stir into rice mixture. Pour rice mixture into a buttered shallow 2-quart casserole; sprinkle with remaining 1 cup cheese. Bake at 350 degrees for 25 minutes or until hot and bubbly. Serves 6.

### NASSI GOARENG (DUTCH RICE WITH PORK)

1 large onion, chopped  
3 cloves garlic, minced  
4 or 5 pork chops, cut up  
1 pkg. thin-sliced ham (about 8-oz.)  
cut up  
3 cups cooked rice  
1/8 teaspoon Sambal (red pepper paste)  
OR 1/4 teaspoon crushed red  
peppers  
1/2 teaspoon salt  
Black pepper to taste  
Paprika  
Small amount vegetable oil  
In vegetable oil, saute' onions and garlic until clear. Remove fat and bone from pork chops. Cut meat into small pieces and add to onions and garlic. Stir in Sambal or red peppers, then salt, pepper and paprika. Mix well. Cook until pork is done. Cut ham into small pieces and add to meat mixture. Stir. When ham is thoroughly heated and mixed throughout, pour mixture in with cooked rice and mix thoroughly. Serve and enjoy!!

### SPICY SAUSAGE AND RICE

1 lb. bulk sausage  
1 cup uncooked regular rice  
1/2 cup diced onion  
1 10-oz can Rotel diced tomatoes  
and green chilies  
1 1/2 teaspoons Worcestershire sauce  
1 1/2 teaspoons prepared mustard  
1/2 teaspoon salt  
1/2 cup water  
Cook sausage, stirring while it cooks to crumble, til completely done. Drain and discard pan drippings. Return sausage to skillet; stir in rice and cook over low heat about 5 minutes, until rice is golden, stirring occasionally. Add remaining ingredients; simmer 30 minutes, covered. May need to be stirred once or twice. Serves 6.

### TAMI'S RUSH-HOUR RICE

1 cup uncooked parboiled rice  
1 1/2 teaspoons salt  
1 teaspoon black pepper  
1 tablespoon minced onion  
1 tablespoon Worcestershire Sauce  
1 1/2 teaspoons ground cumin  
2 tablespoons cooking oil  
1 10 1/4-oz. can chicken broth  
2 soup cans water  
2 5-oz. cans boned chicken  
1 16-oz. can mixed vegetables,  
undrained  
1 can cream of chicken soup,  
undiluted  
In large skillet, brown rice and seasonings in oil over medium heat, stirring occasionally. Add chicken broth and water. Cover and cook 30 minutes or until rice is tender and water is absorbed. Add chicken, vegetables, and cream of chicken soup. Mix well. Simmer 10 minutes, stirring occasionally. Serves 6-8.

### FROZEN FRUIT COCKTAIL

2 cans chunk pineapple, use juice  
Maraschino cherries, optional  
Green grapes  
14 peaches, fresh  
14 pears, fresh  
1/2 cup sugar to 1 quart fruit, (about 3  
cups)  
9 teaspoons Fruit Fresh, (add to sugar)  
Put up fruit in large bowl. Toss lightly with sugar mixture. Bag and freeze. You can add any fresh fruit.

### FROZEN CHOCOLATE VELVET PIE

2 egg whites  
1/8 teaspoon salt  
1/4 cup sugar  
2 cups nuts, pecans or walnuts  
1/4 cup white corn syrup  
1 tablespoon water  
1 tablespoon vanilla  
1 cup semi-sweet chocolate pieces  
3/4 cup chilled can sweetened condensed  
milk  
1 1/2 cups heavy cream  
Beat egg whites with salt to soft peaks, gradually beat in sugar. Beat stiff, add nuts. Spread over bottom and sides of greased pie plate. Make rim about 3/4-inches high. Bake at 400 degrees for 12 minutes. Cool. Bring corn syrup and water just to a boil. Remove from heat, stir in vanilla and chocolate. Cool. Reserve 2 tablespoons. Pour rest in large bowl with milk and cream. Beat at medium speed until it stands at soft peaks. Pour into cool pie crust. Firm in freezer unwrapped. When frozen pipe reserved chocolate in lattice designs. Freeze until ready to serve. Will keep about 3 or 4 months.

### BROWNIES

2 sticks butter  
4 eggs  
2 cups sugar  
1 cup flour  
1/4 cup cocoa  
1 teaspoon vanilla  
1 cup pecans  
Melt butter in brownie pan. Mix eggs, sugar, flour, cocoa and vanilla. Add melted butter and pecans. Pour back into pan and cook at 350 degrees for 30 minutes. Do not cut while hot.

### MILLIONAIRES

1 14-oz. pkg. caramels  
2-3 tablespoons milk  
2 cups pecans  
1 6-oz. pkg. semi-sweet chocolate  
chips  
1/2 block paraffin  
Melt caramels and milk in top of double boiler. Beat 2-3 minutes. Add pecans and drop on wax paper. Melt chocolate chips and 1/2 block paraffin. Dip caramel-nut drops into chocolate mixture and return to wax paper.

### MAGIC MUFFINS

Mix 1 cup vanilla ice cream and 1 cup self-rising flour together. Spoon into greased muffin tins and bake at 400 degrees til done. Do not substitute ice milk or all-purpose flour!

### BAKED POPCORN CRUNCH

1/2 cup margarine or butter  
1/3 cup firmly packed brown sugar  
3 qts. hot popped popcorn (about  
1/2 cup unpopped)  
1 cup pecan halves or pieces  
Preheat oven to 350 degrees. Cream butter and brown sugar together in large bowl. Pop corn and mix with creamed butter-sugar. Add nuts. Spread in a 15-by-10-by-1-inch jelly roll pan. Bake 8 minutes. Cool in pan. Yield: 3 qts.

### PUMPKIN BARS

2 cups suar  
2 cups all-purpose flour  
2 teaspoons baking powder  
1 teaspoon soda  
1/2 teaspoon salt  
2 teaspoons ground cinnamon  
3/4 cup corn oil  
2 cups cooked, mashed pumpkin  
or 1 16-oz. can pumpkin  
4 eggs  
Combine first 6 ingredients. Add oil, pumpkin, and eggs; beat 1 minute at medium speed of electric mixer. Spoon batter into greased 15x10x1-inch jelly roll pan. Bake at 350 degrees for 20 to 25 minutes. Let cool completely. Frost with fluffy cream cheese frosting. Cut into bars. Makes about 3 dozen.  
Fluffy Cream Cheese Frosting:  
1 3-oz. pkg. cream cheese, softened  
6 tablespoons margarine, softened  
1 tablespoon orange juice  
1 teaspoon vanilla flavoring  
2 cups powdered sugar  
Beat cream cheese and margarine until light and fluffy. Add orange juice and vanilla. Mix well. Gradually add powdered sugar, mixing until light and fluffy.



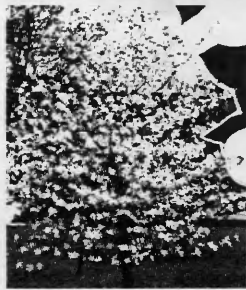
# NURSERY STOCK SALE (ORDER BY MAIL) SAVE UP TO 30% FROM CATALOGUE PRICES

PLANTING INSTRUCTIONS INCLUDED IN EACH ORDER, EVERY PLANT WILL BE LABELED.

Notice: Orders of \$30.00 or more - take 10% discount off price of order. Does not apply to \$2.50 postage and handling charge.



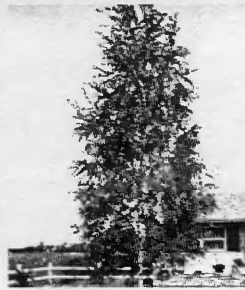
**RED MAPLE** (Acer Rubrum 4-5 ft.) This is one of the most beautiful of all shade trees. Besides having brilliant scarlet red leaves in the fall of the year, it has another excellent trait - it is an extremely fast grower. It is very easily transplanted and many experts agree it will practically grow anywhere in the U.S.A. Grows up to 60 ft.  
1 Tree ... 1.50 10 Trees ... 14.00



**WHITE DOGWOOD** (4-5 ft.) Large white, single blossoms are conspicuous early in spring. The foliage is attractive all summer, and the tall colorful Red berries hang on most of the winter. Use as a specimen or in groups as a background for borders. Grows up to 30 ft. high.  
1 tree ... 1.99 10 trees ... 19.00



**TULIP TREE** (4-5 ft.) A large growing, hardy tree reaching heights of 80 feet or more. Its bright yellow leaves in the fall have tulip shaped flowers in the spring. Rapid grower.  
1 Tree ... 1.50 10 Trees ... 14.00



**WHITE BIRCH** (4-5 ft.) Many people know this eye catching native tree as White Birch or Canoe Birch. The white bark and clear yellow leaves in the fall provide showy colors. Height 60 feet, spread 30 feet.  
1 Tree ... 1.98 10 Trees ... 17.50



**SUGAR MAPLE** (4-5 ft.) The largest of all maples, its beautiful array of yellow and orange hues make it a sight to remember due to the foliage thickness. A very hardy northern and southern tree - will grow up to 60 feet.  
1 Tree ... 1.50 10 Trees ... 14.00



**GREEN WEEPING WILLOW** 4-5 ft. ... 1.50 ea. 10 for 14.00 This common Weeping Willow makes a large lacy tree with long branches weeping to the ground. Good for planting near water or as a planting accent alone or in groups of two or three in moist locations. Ultimate height 40 feet.

### FLOWERING SHRUBS 1-2 Years Old

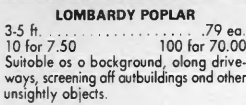
- Crepe Myrtle, Red, Pink, 1 ft. 1.25 ea.
- Spirea Von Houttie, 1-2 ft. 1.25 ea.
- Weigelo, Red, 1-2 ft. .95 ea.
- Forsythia Yellow, .65 ea.
- Bush Honeysuckle, Red, 1 ft. .75 ea.
- Red Flowering Quince, 1-2 ft. 1.25 ea.
- Persia Lilac, Purple, 1-2 ft. .95 ea.
- Old Fashion Lilac, 1-2 ft. 1.25 ea.
- Hydrangea P.G., 1-2 ft. .75 ea.
- Mackorange, White, 1-2 ft. .60 ea.
- Pussy Willow, 1-2 ft. .95 ea.
- Red Borberry, 1-2 ft. .95 ea.
- Jop. Snowball, 1-2 ft. 1.25 ea.
- Blue Hydrangeo, 1-2 ft. 1.25 ea.
- Azolea, White, Purple, Red or Pink 1/2-1 ft. 1.25 ea.
- Russion Olive, 1-2 ft. .75 ea.

### SHADE TREES - 1-2 Years Old

- Scarlet Oak, 3-5 ft. 2.98 ea.
- Ginko Tree, 3-4 ft. 2.98 ea.
- Pin Oak, 3-5 ft. 1.95 ea.
- Sweet Gum, 4-5 ft. 1.50 ea.
- Crimson King Maple, 3-5 ft. 1.95 ea.
- Persimmon, 1-2 ft. 1.95 ea.
- Downs Redwood, 1-2 ft. 3.95 ea.
- Jop. Red Leaf Maple, 1 ft. 3.95 ea.
- Hybrid Poplar, 3-5 ft. 1.75 ea.
- Red Oak, 3-5 ft. 2.98 ea.

### BERRY PLANTS, Etc. - 1-2 Yrs. Old

- Blackberry, Thornless, 1.75 ea.
- 8lack Rasperry, 1 ft. .85 ea.
- Red Everbearing Rasperry, 1 ft. .75 ea.
- Dewberry, 1 ft. .95 ea.
- Baysberry, 1 ft. .95 ea.
- Gooseberry, 2 yr., 1 ft. 1.75 ea.
- Figs, 1-2 ft. 3.98 ea.
- Concord Grape, 1 ft. 1.25 ea.
- Negonia Grape, 1 ft. 1.25 ea.
- 10 Rhuborb, 1 yr. Roots 2.50
- 25 Strawberry, Blokemore or Tenn. Beouty .295
- 25 Gem Everbearing Strawberry 2.95
- 25 South Privet, 1-2 ft. 6.95
- 25 North Privet, 1-2 ft. 6.95
- 10 Multiflora Rose, 1-2 ft. 4.98
- 20 Asporagas, 1 yr. roots 2.75
- 10 English Ivy, 4-8 in. 3.00



**LOMBARDY POPLAR** 3-5 ft. ... .79 ea. 10 for 7.50 100 for 70.00 Suitable as a background, along driveways, screening all outbuildings and other unsightly objects.

### NOTICE

We have a large amount of Apples and Peaches in 2 to 3 ft. size, the most popular varieties, that we are making you a bargain price on.

**STANDARD APPLES**  
Red Delicious, 2-3 ft. ... 1.75 ea.  
Stoyman Winesap, 2-3 ft. ... 1.75 ea.  
Yellow Delicious, 2-3 ft. ... 1.75 ea.  
10 Apple Trees for \$15.00

**STANDARD PEACHES**  
Belle Ga., 2-3 ft. ... 1.75 ea.  
Elberta, 2-3 ft. ... 1.75 ea.  
Hole Hoven, 2-3 ft. ... 1.75 ea.  
Red Hoven, 2-3 ft. ... 1.75 ea.  
10 Peach Trees for \$15.00

### DELIVERY DATE

Alabama, Arkansas, Florida, Georgia, Kentucky, Louisiana, Mississippi, New Mexico, Missouri, North Carolina, Oklahoma, South Carolina, Tennessee, Texas, Virginia and West Virginia.

**SPRING: January 15 - May 1**  
**FALL: October 1 - December 1**  
ALL OTHER STATES  
**SPRING: March 1 - May 1**  
**FALL: Sept. 25 - December 1**

### STANDARD FRUIT TREES 1-2 Years Old

- Elberta Peach, 3-5 ft. 3.49 ea.
- Belle of Ga. Peach, 3-5 ft. 3.49 ea.
- J. H. Hole Peach, 3-5 ft. 3.49 ea.
- Hole Hoven Peach, 3-5 ft. 3.49 ea.
- Dixie Red Peach, 3-5 ft. 3.49 ea.
- Golden Jubilee Peach, 3-5 ft. 3.49 ea.
- Red Hoven Peach, 3-5 ft. 3.49 ea.
- Champion Peach, 3-5 ft. 3.49 ea.
- Loring Peach, 3-5 ft. 3.49 ea.
- Stoyman Winesap Apl., 3-5 ft. 3.98 ea.
- Red Delicious Apple, 3-5 ft. 3.49 ea.
- Red Rome Apple, 3-5 ft. 3.49 ea.
- Red Jonathon Apple, 3-5 ft. 3.49 ea.
- Early McIntosh Apple, 3-5 ft. 3.49 ea.
- Red June Apple, 3-5 ft. 3.49 ea.
- Arkansas Black Apple, 3-5 ft. 3.49 ea.
- Early Harvest Apple, 3-5 ft. 3.49 ea.
- Lodi Apple, 3-5 ft. 3.49 ea.
- Grimes Golden Apple, 3-5 ft. 3.49 ea.
- Mutsu Apple, 3-5 ft. 3.49 ea.
- Gronny Smith Apple, 3-5 ft. 3.98 ea.
- Yellow Trans. Apple, 3-5 ft. 3.49 ea.
- Mantmorency Chy., 2 1/2-4 ft. 5.98 ea.
- Black Tartarian Chy., 2 1/2-4 ft. 5.98 ea.
- Early Richmond Chy., 2 1/2-4 ft. 5.98 ea.
- Bing Cherry, 2 1/2-4 ft. 5.98 ea.
- Governor Wood Chy., 2 1/2-4 ft. 5.98 ea.
- Kieffer Pear, 3-5 ft. 4.98 ea.
- Orient Pear, 3-5 ft. 4.98 ea.
- Bartlett Pear, 3-5 ft. 4.98 ea.
- Moonglow Pear, 3-5 ft. 4.98 ea.
- Moopark Apricot, 2 1/2-4 ft. 2.98 ea.
- Early Golden Apricot, 2 1/2-4 ft. 2.98 ea.
- Sure Crop Nectarine, 2 1/2-4 ft. 2.98 ea.
- Garden Stone Ned., 2 1/2-4 ft. 2.98 ea.
- Domson Plum, 3-5 ft. 3.49 ea.
- Methley Plum, 3-5 ft. 3.49 ea.
- Red June Plum, 3-5 ft. 3.49 ea.
- Santa Rosa Plum, 3-5 ft. 3.49 ea.
- Barban Plum, 3-5 ft. 3.49 ea.
- Stanley Prune Plum, 3-5 ft. 3.49 ea.

### DWARF FRUIT TREES - 1-2 Yrs. Old

- Dwf. Elberta Peach, 2 1/2-4 ft. 3.49 ea.
- Dwf. Belle of Ga. Peach, 2 1/2-4 ft. 3.49 ea.
- Dwf. J. H. Hole Peach, 2 1/2-4 ft. 3.49 ea.
- Dwf. Hole Hoven Peach, 2 1/2-4 ft. 3.49 ea.
- Dwf. Dixie Red Peach, 2 1/2-4 ft. 3.49 ea.
- Dwf. Golden Jub. Pch., 2 1/2-4 ft. 3.49 ea.
- Dwf. Red Hoven Peach, 2 1/2-4 ft. 3.49 ea.
- Dwf. Champion Peach, 2 1/2-4 ft. 3.49 ea.
- Dwf. Loring Peach, 2 1/2-4 ft. 3.49 ea.
- Dwf. Red June Apple, 2 1/2-4 ft. 3.49 ea.

### DWARF FRUIT TREES Continued

- Dwf. Red Del. Apple, 2 1/2-4 ft. 3.49 ea.
- Dwf. Red Rome Apple, 2 1/2-4 ft. 3.49 ea.
- Dwf. Red Jonathon, 2 1/2-4 ft. 3.49 ea.
- Dwf. Early McIntosh, 2 1/2-4 ft. 3.49 ea.
- Dwf. Stoyman Winesap, 2 1/2-4 ft. 3.49 ea.
- Dwf. Early Harvest, 2 1/2-4 ft. 3.49 ea.
- Dwf. Lodi Apple, 2 1/2-4 ft. 3.49 ea.
- Dwf. Grimes Golden, 2 1/2-4 ft. 3.49 ea.
- Dwf. Yellow Del. Apl., 2 1/2-4 ft. 3.49 ea.
- Dwf. Gronny Smith, 2 1/2-4 ft. 4.49 ea.
- Dwf. Yellow Trans., 2 1/2-4 ft. 3.49 ea.
- Dwf. North Star Chy., 2 1/2-4 ft. 6.49 ea.
- Dwf. Mantmorency Chy., 2 1/2-4 ft. 6.49 ea.
- Dwf. Bartlett Pear, 2 1/2-4 ft. 5.98 ea.
- Dwf. Kieffer Pear, 2 1/2-4 ft. 5.98 ea.
- Dwf. Burbank Plum, 2 1/2-4 ft. 3.49 ea.
- Dwf. Methley Plum, 2 1/2-4 ft. 3.49 ea.
- Dwf. Red June Plum, 2 1/2-4 ft. 3.49 ea.

### EVERGREENS - 1-2 Years Old

- \*White Pine, 1 ft. 60 ea.
- Blue Rug, 4-6 inches 1.75 ea.
- Wox Leaf Ligustrum, 1/2-1 ft. 65 ea.
- Colorado Blue Spruce, 1/2-1 ft. 75 ea.
- \*Conodion Hemlock, 1-2 ft. 75 ea.
- Andoro Juniper, 1/2-1 ft. 1.25 ea.
- Norway Spruce, 1/2-1 ft. 75 ea.

### NUT TREES - 1-2 Years Old

- American Hazel Nut, 3-5 ft. 2.95 ea.
- European Hazel Nut, 3-5 ft. 2.95 ea.
- Butternut, 3-4 ft. 4.49 ea.
- Chinese Chestnut, 3-5 ft. 3.95 ea.
- Hardy Pecan Seedlings, 1-2 ft. 1.50 ea.
- Shurt Pecan, Papershell, 2-3 ft. 8.95 ea.
- Block Walnut, 3-5 ft. 3.45 ea.
- English Walnut, 2-3 ft. 7.95 ea.
- Holl's Hardy Almonds, 3-5 ft. 4.98 ea.

### BERRY PLANTS

- BLUEBERRIES - Bluecrop, Rubel, Blueroy, Jersey, 1 ft. 2.98 ea.

### FLOWERING TREES - 1-2 Yrs. Old

- Magnolia Grandiflora, 1/2-1 ft. 1.45 ea.
- Mimosa, Pink, 3-5 ft. 1.50 ea.
- Pink Flow. Dogwood, 2 ft. 7.95 ea.
- Golden Rain Tree, 3-4 ft. 2.95 ea.
- Pink Flow. Cherry, 3-5 ft. 3.49 ea.
- Flow. Crab, Red, 3-5 ft. 3.49 ea.
- Magnolia Saulongeo, 1-2 ft. 2.95 ea.
- European Mt. Ash, 3-4 ft. 3.95 ea.
- Red Flow. Dogwood, 2 ft. 7.95 ea.

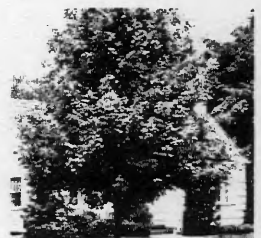
**Our plants are nursery grown from cuttings, seeds or budded stock unless otherwise stated. These have never been transplanted. Those marked with (\*) asterisks mean they are collected from the wild state. Plants are inspected by the Tennessee Department of Agriculture. This gives you a chance to buy at lower prices. You may order as many or as few plants as you wish. Send \$2.50 extra with order for postage and packing. RUSH YOUR ORDER TODAY! TWO-WAY GUARANTEE:** We ship live plants packed well to reach you in perfect condition. However, sometimes a package gets lost and stays in transit a long time. In this case, in the Fall and Winter when plants are dormant, you can scrape on the bark and tell whether the plants are alive or not. If the bark is green, it is alive. We believe we have the best guarantee any mail order nursery could possibly offer. Here is our two-way guarantee. First guarantee - When you receive your order, if there are any plants in bad condition, you notify us immediately and we will replace absolutely FREE. Second guarantee - The reason we make this strong guarantee is because there is no reason any of the plants should die. However, if any fail to live within 12 months from the date of delivery, we will replace for one-half of the original purchase price, plus \$1.00 for postage and handling. No return of dead plants necessary. We guarantee our plants to be true to name and color. Anything that proves to be wrong color or variety, we will replace free.

## SAVAGE FARM NURSERY

P. O. BOX 125 IL McMinnville, Tennessee 37110



**AMERICAN REDBUD** 4-5 ft. ... 1.98 ea. 10 for 19.00 The Redbud is often used as a specimen or to provide a high point in a shrub border. Branches are covered with small, pea-like, purplish pink blossoms before the foliage comes out in spring. Ultimate height 15 feet.



**SILVER MAPLE** 4-5 ft. ... 1.50 ea. 10 for 14.00 A very fast growing, soft wooded tree reaching a height of 30 to 60 feet. Leaves deeply cut and very attractive, being a silvery white underneath.

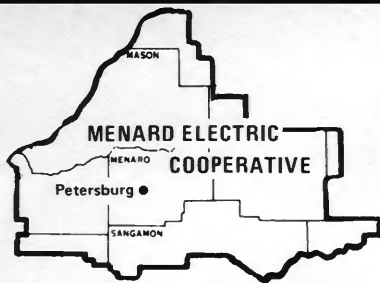


**BURNING BUSH** 1/2-1 ft. ... 65 ea. 10 for 60.00 20 for 11.00 100 for 50.00 In the fall leaves turn a brilliant mirror bright crimson. A 4-5 ft. showpiece with unusual corky bark. Hardy in sun or partial shade.

### SEMI-DWARF APPLES

We offer you eight of the most popular varieties of Semi-Dwarf Apples. They are the most productive tree and grow 12 to 15 feet tall. They give you more fruit per limb, more fruit per tree.

- S.D. Red Delicious, 3-5 ft. ... 3.75 ea.
- S.D. Stoyman Winesap, 3-5 ft. 3.75 ea.
- S.D. Jonathon, 3-5 ft. ... 3.75 ea.
- S.D. Red Rome Beauty, 3-5 ft. 3.75 ea.
- S.D. Golden Nugget, 3-5 ft. 3.75 ea.
- S.D. Golden Delicious, 3-5 ft. 3.75 ea.
- S.D. Grimes Golden, 3-5 ft. 3.75 ea.
- S.D. Lodi, 3-5 ft. ... 3.75 ea.



# Menard Electric News

MENARD ELECTRIC COOPERATIVE 217-632-7746 PETERSBURG, ILLINOIS 62675

## Co-op Comments

When Menard Electric replaces older electric lines or replaces poles in line, quite often the existing poles are not reused due to the age and the length of time that they have been in the ground. Very often the new line is larger and requires larger poles.

We try to reuse the newer poles if they appear to be sound. Experience has shown that after these poles are reset, they have a much shorter life and often fail prematurely. In most cases it is not good business to try and reset poles which have been in the ground for a number of years.

From time to time members of the Cooperative ask us if they may have the poles which we are not going to reuse and we are happy for Cooperative members to be able to utilize the old poles. During the time our engineers are planning the job and before construction begins, we try to contact all property owners along the line where the work is to be done. If the

property owner wants these used poles, they have first chance. Sometimes the landowner does not wish to have them and then the poles are removed from the construction site unless others within the community would like to have an opportunity to receive the same. We do not like to leave poles laying along the road for long periods of time so as to minimize the possibility of someone hitting them or an unauthorized person taking them.

The construction of the three-phase line from the Illinois County Opry south along State Highway 97 has been completed and we are currently retiring the old single-phase line along the highway.

The Cooperative is nearing completion of rebuilding the three-phase feeder line out of the Mason City substation in a northerly direction to State Route 136. We appreciate the cooperation of all members along either of the above construction routes for any inconvenience that may have

occurred while the line was being built and/or transferred from the old to the new distribution line.

Many Cooperative members were concerned about the energy bill which was rendered on January 31, 1986 covering service from approximately December 16, 1985 to January 17th of this year. This period covered not only the Christmas and New Year Holiday season but also encompassed approximately half of the month of December which was extremely cold. As an example, there were 1,340 heating degree days in December which is substantially above the normal of 1,070. This fact alone accounted for substantial increase in the energy bills of many Cooperative members. In many cases the energy bills rendered on February 28th covering service from January 17, 1986 to on or about February 19, 1986 are for fewer kilowatt-hours than the previous month due to January being relatively mild in relationship to the normal January that we have experienced in recent years.

## Allspach replaces McMillan

Edward L. Allspach of Mt. Pulaski has been selected by the board of directors of Menard Electric Cooperative, Petersburg, to fill the unexpired term of Charles McMillan, who resigned from the board in January. Morris L. Bell, president, made the announcement at the February board meeting February 24.

McMillan, 62, who farms near Williamsville with his wife, Dolores, and their son, Donald, left the cooperative board after nearly ten years of service to devote more time to the

family's expanding farm operation.

The Menard Electric board formed a committee of members from that board district to recommend a replacement for McMillan. The committee suggested that Mr. Allspach fill the vacancy on the board.

Allspach, 58, is an active farmer in the Mt. Pulaski area, and farms about 1,200 acres with two brothers and his son, George. A bulldozer owner and

skilled operator, he thinks of his terracing and other conservation efforts as "half work and half hobby." He is a member of the Soil Conservation District of Logan County Farm Bureau, a director of the Union Drainage District and is a past director of the Mt. Pulaski School District and the Mt. Pulaski Grain and Elevator Company.

Allspach is a member of the Masonic Lodge in Mt. Pulaski and his wife, Shirley, is a member of the Eastern Star, housewife and book-keeper for the farming operation, having computerized the farm records on her Apple II computer.

The Allspachs, who are members of the Copeland Christian Church of rural Mt. Pulaski, have five grown children.



Allspach



McMillan

# It's your cooperative's 50th birthday

## Menard seeking members' recollections of beginning

Creation of the Rural Electrification Administration in 1935 changed many things in rural America. REA was designed to serve as an agency that would assist organized farm groups in creating rural electric cooperatives by lending the money to build electric lines.

Commercial power companies were first offered and given the opportunity to utilize loans from REA to provide coverage to all who lived in the rural communities. When the commercial power companies refused to accept this challenge, men and women throughout the nation worked with REA in a bold new venture which many critics predicted would come to a very speedy end.

Self-proclaimed "experts" scoffed at the idea of organizing a rural electric cooperative. Some indicated it was utterly absurd.

The Menard County people, however, on June 13, 1936, had caught a

vision which they clung to tenaciously. It was scarcely a good year for organizing an electric cooperative. Our nation was only beginning to emerge from the worst economic depression in its history. Farm prices were extremely poor, the memory of hogs selling for two cents a pound and corn for such a depressed price it was better to burn it for fuel still was impressed upon the minds of all farmers.

After the initial meeting, the Rev. G. A. Wilson, then pastor of the Rock Creek Presbyterian Church, rose to his feet and made a motion that those elected to the original board of directors be given authority to elect their own officers and appoint committees as they saw fit.

Things moved rather quickly once the directors had been named and officers chosen. The drive for members continued steadily during the summer and fall of 1936 and the late Homer Brown of New Holland, who later

served as a director of your Cooperative, signed up 50 members in a single week in the Scully Prairie area of Logan County.

Any Cooperative members who recall the beginning of the Cooperative and would like to share the same with all Cooperative members are invited to send their comments to the Cooperative at their earliest convenience.



**Office closing**

The Cooperative office will be closed on Friday, March 28, 1986 in observance of Good Friday.

## Cooperative launches water heater program

Menard Electric Cooperative's board of directors has adopted a new water heater promotion program.

Here is how the program works: Any Cooperative members who either replaces an existing water heater which has become faulty or converts a fossil fuel water heater to an electric model on or after March 1, 1986, will receive a one-time payment from the Cooperative of \$150. The minimum size water heater necessary to be installed to qualify for this program must be a 40 gallon size or larger and must meet the ASHRAE 90 standards.

To install an electric water heater after March 1, 1986, the member will receive the payment listed above upon providing the Cooperative with the proper sales information and/or receipt from their dealer which would indicate the size, type, brand and certification that the water heater meets the ASHRAE 90 standards. Cooperative personnel will determine that the heater is installed in a residence on Cooperative lines, and the member will

be entitled to the one-time payment. The coupon provided below should be completed and returned to the Cooperative at the time of the purchase.

In case the member requesting the payment is a tenant, it is the responsi-

bility of the homeowner to participate with the Cooperative on the purchase agreement.

Next month's issue of the REN will provide additional information with reference to a water heating rate.

-----  
**TO: Menard Electric Cooperative**  
 P.O. Box 279 (Water Heater Program)  
 Petersburg, Ill. 62675

I have installed a new Electric Water Heater in a residence served by Menard Electric Cooperative, which meets ASHRAE 90 standards.

The water heater has a capacity of \_\_\_\_\_ gallons. (Minimum of 40 gallons)

The new water heater replaces: \_\_\_\_\_ Electric with Electric  
 \_\_\_\_\_ New Installation  
 \_\_\_\_\_ Gas with Electric

Please send a representative to my home to verify the installation. The best time to find someone at home is \_\_\_\_\_

I am the Home Owner and am entitled to the one-time payment for installing an Electric Water Heater.

Name \_\_\_\_\_

Address \_\_\_\_\_

Account No. \_\_\_\_\_ Signature of Home Owner

(Please submit a copy of the sales receipt, showing dealer, size, type, brand and certification that heater meets standards)

-----

# Illinois Farmers Union

## *Farm policy, politics and mortgage burning highlight meeting*

**T**here were several highlights at the Illinois Farmers Union's 32nd annual meeting during February in Springfield. For many, a tiny bonfire topped the agenda — IFU burned the mortgage on its six-year-old building at 40 Adloff Lane in Springfield.

Several speakers, including Governor James R. Thompson and gubernatorial candidate Adlai Stevenson, addressed the meeting.

Harold Dodd, IFU president; Cy Carpenter, National Farmers Union president, and Bob Bergland, general

not listening very well.

"They're getting rid of rural post offices," he said, "because they're not paying their way. They want to get rid of rural bus and rail service because they're not paying their way, and they also want to dismantle the rural electrification program. It's been one of the most successful federal programs ever, but the Administration wants to get rid of it, too. In fact, the Administration wants to do away with virtually every government program that has a favorable impact on the rural

backs of rural people," Bergland charged.

Ending on a hopeful note, he said the present farm crisis is man-made and can be unmade by policy changes. "The rural electric cooperatives are in a situation a lot like yours," he said, "and we want to work with you, to get a farm bill and a rural legislative package that we can all live with. We have the membership and the know-how. We pledge our support in that effort."

Dodd discussed his organization's



*Rodell Beaty, left, and Harold Dodd burn the mortgage.*



*Charles Schone*

manager of the National Rural Electric Cooperative Association (NRECA), among others, spoke.

"Rural people are going to have to work together if they want to preserve their way of life and prevent the destruction of the family farm," said Bergland, who added in praise of Dodd, "He does a good job in Washington, telling legislators what they need to be told. But," he added, "judging from the actions of the Reagan Administration, Washington is

way of life," he told his enthusiastic audience.

Bergland suggested that there is a reason for the desire to decimate the rural areas. "The Administration, which has doubled the deficit in the last five years," he said, "now wants to reduce the deficit at the expense of rural people. The strong dollar is beating us to death in the international markets, in effect imposing a 40 percent tax on exports. They want to put the burden of deficit reduction on the

efforts to get a good farm bill passed, the law that actually made it through the legislature and why a good bill failed.

"Senator Tom Harkin, an Iowa Democrat, introduced a mandatory production control bill," Dodd explained, "and it would have allowed farmers to determine their own destiny in productivity. A lot of people believe that a mandatory production control system amounts to putting the government in the cab of every tractor

# Farm Materials Handling Show

Interested visitors, another large turnout of exhibitors and the excellent facilities of Rend Lake College combined in March to make for another successful Southern Illinois Farm Materials Handling Show.

Though the number of persons attending the three-day show was down somewhat from previous years, many exhibitors considered the crowd to be one of "quality rather than quantity." Show officials said visitors who turned out expressed a high level of interest in the exhibits and that attendance is expected to pick up as the rural economy regains strength and the show becomes more well-known in the new area (Rend Lake College is located about 12 miles south of Mt. Vernon, alongside Interstate 57). This is the second year for this site.

Some 54 businesses and organizations placed exhibits in this year's show, down 10 percent from the



The Illinois Farm Electrification Council exhibit is a show tradition and attracts a large number of visitors.

record number of 60 exhibitors several years ago.

Dates for the 1987 show were set for Tuesday through Thursday, March 9-11, at Rend Lake College. Royce

Carter of Wayne-White Counties Electric Cooperative, Mt. Vernon is exhibits chairman. Some eight Southern Illinois electric cooperatives help plan and produce the show.

**"Easy to Use!"**

© 1986

## WATER WELLS FOR EVERYONE!

Check one or both boxes for information and mail today!

You can drill a water well in your backyard and have all the **FREE WATER** you need!

You can start a **HIGH PROFIT** well drilling business! (Over 4 million wells needed in 1986!)

**VIDEOTAPES AVAILABLE**

*Our 25th Year*

depths to 500'

**Call or Write for FREE Brochures**

**DeepRock**

5015 Anderson Road  
Opelika, Alabama 36802

**CALL TOLL FREE 1-800-821-7700**  
(Ask for Operator 5015)

Print Name \_\_\_\_\_

Address \_\_\_\_\_

City/State/Zip \_\_\_\_\_ Phone \_\_\_\_\_ 5015

**PLEASE HELP ME!**

I want to find a church, civic, labor, or civil rights organization, business corporation, or individuals, who are willing to **GET INVOLVED** and help me with the governmental and political persecution that I have had to endure for sixteen years. Please write ... Harlan D. Thrasher, Rt. No. 1, Barry, Illinois 62312.

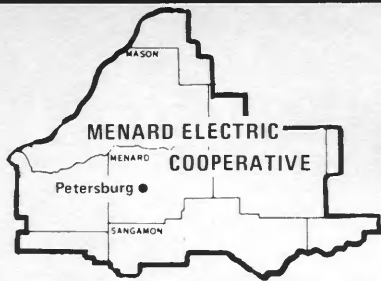
Planning to weatherize?  
The booklet  
**HOME WEATHERIZATION**  
FOR LOWER-COST LIVING COMFORT  
Can help.

For a copy, send \$2 to: Association of Illinois Electric Cooperatives, P.O. Box 3787, Springfield, IL 62708

## NO NEED TO WEAR A TRUSS

THAT BINDS, CUTS, GOUGES, SLIPS

If you wear a Truss for Rupture, a post card with name and address will get you **FREE**, the complete Rice Plan of Reducible Rupture Control. Used daily by thousands who say they never dreamed possible such comfortable rupture protection. Safely blocks rupture opening without need for bulky trusses, gouging pad pressure. Regardless of how long ruptured, send your postcard today to W. S. Rice, Inc., Adams, N.Y. 13605. Dept 9V



# Menard Electric News

MENARD ELECTRIC COOPERATIVE 217-632-7746 PETERSBURG, ILLINOIS 62675

## Co-op Comments

Mrs. Hortense Bell of rural Chandlerville will celebrate her 100th birthday on April 29. Mrs. Bell well remembers when the electric Cooperative first provided the Bell residence with electricity. The Bells paid the membership fee on February 28, 1938. She is the mother of Morris L. Bell, president of the board of directors of your Cooperative.

Mr. and Mrs. Marcel Verreault of rural Petersburg celebrated their 20th wedding anniversary on April 11. Marcel is a leadman for your Cooperative.

The 49th annual meeting of your Cooperative will be held on June 14, 1986, at PORTA High School in Petersburg. Why not mark the date now and plan on attending the annual business session of your Cooperative?

The construction of the three-phase line from the Mason City substation northerly to State Route 136 has been completed.

We are often asked the importance of an account number on your energy bill. The Cooperative has a series of maps, each page of which represents a congressional township. The first series of numbers in your account number indicates which map or page that your account is located in. The second series of numbers reflects which section of land your account number is located in and the next group of numbers reflects the chronological order in which meters within that one square mile were installed. The last digit of your account number reflects the rotation and/or number of members who have lived at this particular



Morris Bell, left, president of Menard Electric Cooperative, Petersburg, congratulates John Root, center, on his retirement as manager of the cooperative, and welcomes R. T. "Tom" Reeves, right, on his selection as interim manager.

## Reeves named interim manager

R. T. "Tom" Reeves of Dongola has been chosen by the board of Menard Electric Cooperative to serve as interim manager, Morris Bell, president, announced at the board's monthly meeting March 24.

Reeves, who managed Southern Illinois Electric Cooperative, Dongola, for 25 years, will fill in for the retiring John Root, while the search for a full-time manager continues. He served as interim manager of Southeastern Illinois Electric Cooperative, Eldorado, from March through September of 1984. All told, he has spent nearly 40 years working for electric cooperatives in Illinois.

account in recent years.

By dispatching employees to an account number, our employees are better able to respond to your needs as there may be other people many miles away with a similar or same name.

From time to time we receive suggestions from Cooperative members, particularly about including more than one bill in an envelope to the same

His son, Tim, succeeded him as manager of SIEC upon his retirement and another son, Jeff, serves as manager of Corn Belt Electric Cooperative, Bloomington.

Root, a West Virginia native, came to Menard Electric from Millboro, Va., in 1965, having served there as assistant manager of BARC Electric Cooperative.

He is past president of the Petersburg Chamber of Commerce, has been president of the United Fund Drive for Menard County and the County Historical Society.

He and his wife, Mildred, plan to remain in Menard County.

address. In order to accomplish the inclusion of more than one bill in an envelope requires substantial amount of time and creates additional hand labor. We appreciate suggestions of this type and are considering how the printing of bills currently done in zip code order can be identified so as to allow the inclusion of more than one bill in an envelope without adding to labor costs.

# Proxy voting changed

Your Cooperative bylaws provide for proxy voting by Cooperative members at the annual meeting. Proxy voting is covered under Article XIII, entitled "Proxies."

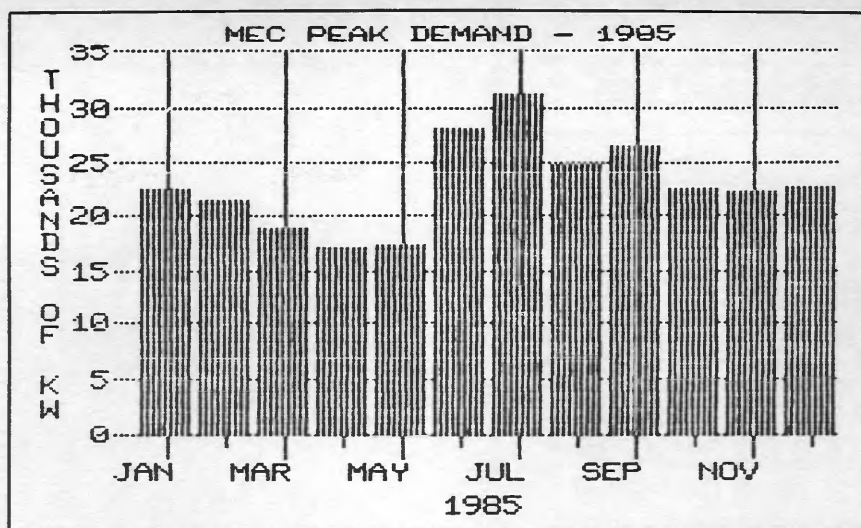
During the past few years members could vote for as many as 10 members by using valid proxies. Experience has shown that the time necessary to validate proxies and to assign proxies to members who are present is time-consuming and virtually impossible to accomplish at the annual meeting and to have them validated by the time they are to be utilized.

Your board of directors has amended Article XIII, entitled "Proxies" and the amended section follows. You will note that there are two changes in above Article: (1) Proxies must be filed with secretary in the Cooperative office at least three business days prior to the meeting. (This means that in 1986 proxies have to be filed in the Cooperative office on or before June 11); (2) Restricts members voting to not more than three proxy members, wherein the past few years it has been 10.

Your board of directors believes that the changes in the bylaws as set forth herein will allow each member to properly exercise his opportunity for voting and will allow the same to be performed in a business like manner. The amendment to the bylaws was passed by your board of directors unanimously.

The following is the amended bylaw, with changes underlined:

At all meetings a Member entitled to vote may vote by proxy executed in writing by the Member. Such proxy shall be filed with the Secretary at the Cooperative headquarters at least three (3) business days prior to the meeting. No proxy shall be voted at any meeting of the Members unless it shall designate the particular meeting at which it is to be voted, and no proxy shall be voted at any meeting other than the one so designated or any adjournment of such meeting. No



## Holding down demand

Each month the usage of electricity creates what is called "demand" on your electric distribution system. The demand represents the highest usage of electricity that must be generated and supplied to our members at one time. The level of Menard's demand for 1985 is shown in the accompanying chart.

Your Cooperative is concerned about demand that is created during the months of December, January, February, July and August as this becomes a substantial part of the wholesale cost of electricity.

Your Cooperative has abundant kilowatt-hours for members use. Our major concern is trying to manage the use of electricity during the five months in question. For a number of years we have managed irrigation load in an attempt to hold the demand down during the summer months.

Member shall vote as proxy for more than three (3) Members at any meeting of the Members except where such person is exercising a proxy in connection with the borrowing of funds from the United States of America or a sale, mortgage, lease or other disposition or encumbrance of property to the United States of America or any agency or instrumentality thereof or in connection with an amendment to the Articles of Incorporation of the Cooperative. No proxy shall be valid after sixty (60) days from the date of its execution. The presence of a Member at a meeting of the Members shall revoke a proxy theretofore executed

Currently your Cooperative is working on an electric water heating rate, a new security light program, and has recently received an interruptible rate, which is being offered to very large users of electricity. We are also exploring other possible means of holding down the high demands during the five month period.

What does this mean to the average Cooperative member? The success your Cooperative has with maintaining a lower monthly kilowatt-hour demand with substantial increases in sales of kilowatt-hours will benefit every Cooperative member by holding the cost to a lower level than if load management was not implemented.

As an example, with nationwide figures for each 1 percent reduction in the sale of kilowatt-hours, nationally the cost of electricity increases by .34 of a cent per kilowatt-hour.

by him and such Member shall be entitled to vote at such meeting in the same manner and with the same effect as if he had not executed a proxy. In case of a joint membership, a proxy may be executed by either husband or wife. The presence of either husband or wife at a meeting of the Members shall revoke a proxy theretofore executed by either of them and such joint Member or Members shall be entitled to vote at such meeting in the same manner and with the same effect as if a proxy had not been executed. Any action previously taken at any meeting shall be invalidated by revocation of a proxy provided herein.

# MISSING



**DANYEL LOU SPARPANA**

LAST SEEN: 11/2/85 EYES: Blue  
 FROM: Woodland, CA HEIGHT: 3'  
 DOB: 6/23/82 WEIGHT: 40  
 WHITE FEMALE HAIR: Blonde



**KELLY HOLLAND, JR.**

LAST SEEN: 2/13/82 EYES: Blue  
 FROM: Larkslane, KY HEIGHT: 4'  
 DOB: 11/17/75 WEIGHT: 60  
 WHITE MALE HAIR: Brown

If you can identify these or any other missing children, call The National Center for Missing and Exploited Children at:

**1-800-843-5678**

(sightings only)

This message is brought to you as a public service by Association of Illinois Electric Cooperatives, in cooperation with National Child Safety Council.

## -Safety Tip of the Month-

Make a mental note of the clothes your child wears EVERY DAY. Avoid putting your child's name on clothes or books. Children may respond to a dangerous person who calls them by name.

© National Child Safety Council 1985 • All Rights Reserved • LITHO USA

If you want to personally help end this national tragedy, or need additional information, please call:

**1-800-222-1464**



## The Metropolitan Guild For Collectible Art Issues An Original Masterwork



Made Entirely in U.S.A.

WING SPAN OVER 6"

# The GOLDEN EAGLE

- Strict Limited Edition
- OVER 1,000 FEATHERS  
 each layered in PURE 24K GOLD
- Collectors Item

OFFICIAL  
 ISSUE PRICE

**\$ 19<sup>95</sup>**

The Metropolitan Guild for Collectible Art has commissioned nationally renowned sculptor Carver Tripp to create a sculpture that captures the raw power and winged majesty of the American Eagle. ... The artist has meticulously carved over 1000 feathers onto the body of "The Golden Eagle". The wings open gracefully to a span of 6 inches and each feather is layered in pure 24K Gold.

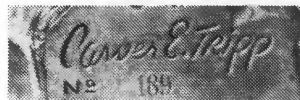
"The Golden Eagle" is engraved with the artist's authentic signature and each piece is individually numbered. Each statue is accompanied by an OFFICIAL CERTIFICATE OF REGISTRATION.



**CARVER EDWARD TRIPP**

Carver Tripp developed a love of art early in life. He nurtured this special

talent by studying with some of the world's finest teachers. He has created many beautiful pieces, but even he admits the Golden Eagle "... has its own magic!"



Individual serial number and authentic signature.



CALL 24 HOURS A DAY  
 7 DAYS A WEEK

CREDIT CARD ORDERS  
 CALL TOLL FREE  
 1 800-453-4000

Golden Eagle Offer Dept. GF 43

### STRICT LIMITED EDITION\*

On JULY 4, 1987, the original Tripp molds will be destroyed and no more sculptures will be created. Collectors Note: the lower serial numbers will ship first; therefore it is important to reserve your statue now. Each statue comes with an unconditional money back guarantee.

### THE METROPOLITAN GUILD

The Metropolitan Guild for Collectible Art now offers you a unique opportunity to own limited edition works of art. We have commissioned renowned artists from around the world to create these one of a kind masterpieces. Our works of art are individually numbered, engraved with the artist's signature and produced in strictly limited editions; thereby ensuring their continued value.

THE METROPOLITAN GUILD DEPT. GF 43  
 175 Fifth Avenue, New York, N.Y. 10010

Please send me "GOLDEN EAGLE"(S)

Each only \$19.95 plus \$2.00 shipping & handling  
 N.Y. Resident Add Sales Tax

I enclose  Check  Money Order  
 Please Charge my:  Mastercard  Visa  Am Ex  
 # \_\_\_\_\_ Exp. Date \_\_\_\_\_

Name \_\_\_\_\_

Address \_\_\_\_\_

City/State \_\_\_\_\_ Zip \_\_\_\_\_



# Legislators to agriculture leaders: we're working to help

Much of the Illinois agriculture economy is on shaky ground, but the Illinois Legislature is working to change that, those attending the Illinois Agriculture Legislative Breakfast were told.

The gathering, held April 5 in Springfield, is an annual event that provides an opportunity for members of the state's agriculture commodity groups to visit with their lawmakers. Some 60 farm-related organizations, including the Association of Illinois Electric Cooperatives, sponsored the event.

With the farm economy in the doldrums, many legislators had a chance to hear from the people back home, and the speakers, each of whom spoke briefly, told their audience that they are aware of the problems on the farm and are working diligently to help solve them.

Governor James R. Thompson noted that his administration is continuing its efforts on behalf of the state's premier industry, pointing out that foreign compe-

tion is rough and getting worse.

"Illinois farmers face the latest technology from across the seas. Some of the competition we face now is a result of aid we've sent to other countries, or it comes from countries we used to export to. They now have the advantage of cheap land, cheap labor and shorter distances to transport their goods.

"While the deck seems stacked against Illinois agriculture — and other American farmers — we cannot just give up.

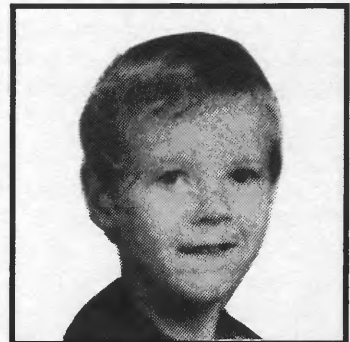
"We can't just abandon our efforts. We need to keep our Food for Century III efforts going, to find new ways to add value to our products, through processing, before we ship them. And we need to develop better seed and new crops. If we can't do anything to raise prices, maybe we can do something to lower costs. When you visit with your legislators, be sure to thank them for their support — they really deserve it," the governor concluded.

## MISSING



**CHRISTI DIANNE PROCTOR**

LAST SEEN: 2/15/86 EYES: Blue  
FROM: Dallas, TX HEIGHT: 4'10"  
DOB: 2/29/76 WEIGHT: 75  
WHITE FEMALE HAIR: Brown



**JEREMY JAMES GRICE**

LAST SEEN: 11/22/85 EYES: Blue  
FROM: Bath, SC HEIGHT: 3'8"  
DOB: 5/12/81 WEIGHT: 40  
WHITE MALE HAIR: Blonde

If you can identify these or any other missing children, call The National Center for Missing and Exploited Children at:

**1-800-843-5678**

(sightings only)

This message is brought to you as a public service by Association of Illinois Electric Cooperatives, in cooperation with National Child Safety Council.

### -Safety Tip of the Month-

Be sure your child knows what to do if you became separated. If separated while shopping, your child should not look for you, but go immediately to the nearest clerk and ask for assistance.

© National Child Safety Council 1985 • All Rights Reserved • LITHO USA

If you want to personally help end this national tragedy, or need additional information, please call:

**1-800-222-1464**

**"Easy to Use!"**

## WATER WELLS FOR EVERYONE!

Check one or both boxes for information and mail today!

You can drill a water well in your backyard and have all the **FREE WATER** you need!

You can start a **HIGH PROFIT** well drilling business! (Over 4 million wells needed in 1986!)

VIDEOTAPES AVAILABLE

*Our 25th Year*

depths to 200'

depths to 500'

© 1986

**Call or Write for FREE Brochures**

### DeepRock

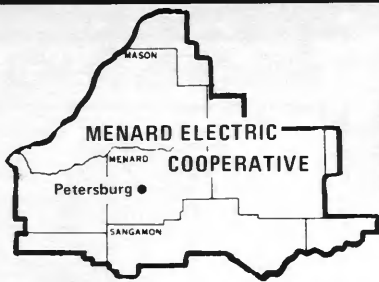
5028 Anderson Road  
Opelika, Alabama 36802

**CALL TOLL FREE**  
**1-800-821-7700**  
(Ask for Operator 5028)

Print Name \_\_\_\_\_

Address \_\_\_\_\_

City/State/Zip \_\_\_\_\_ Phone \_\_\_\_\_ 5028



# Menard Electric News

MENARD ELECTRIC COOPERATIVE 217-632-7746 PETERSBURG, ILLINOIS 62675

## Co-op Comments

In the April issue of this magazine in an article entitled, "Proxy Voting Changed" an error of omission occurred in the last sentence of the By-law amendment. The correct reading should be: "Any action previously taken at any meeting shall not be invalidated by revocation of a proxy provided herein." We are sorry for this omission.

The construction of the three-phase electric distribution line from the Illinois Country Opry located on Route 97 south of Petersburg to the Harrison farm located near Davenport corner

has been completed. This upgrading of the distribution line from single- to three-phase allows the Cooperative to provide alternate sources of energy from three substations located at New Berlin, Salisbury and Petersburg. Members residing in the Rock Creek Community and the Salisbury area will have enhanced service by this improvement in the Cooperative's distribution system.

Just a reminder that the 49th annual meeting of your Cooperative will be held on Saturday, June 14, at the PORTA High School. It is planned at this time that the official notice will be mailed to all Cooperative members

during the week of May 27.

The electric energy billings dated April 30 were mailed on May 1. We regret any inconvenience the delay may have caused.

The Petersburg area experienced a severe storm on April 30. Extreme winds caused damage to houses, buildings, crops and to cooperative electric lines. All service was restored and temporary line repair was completed early in the morning of May 1. We appreciate the cooperation of our members who were without electric power during the storm. We are thankful that no personal injuries have been reported.

## Robert Schiller is new manager

Robert E. Schiller of Salado, Texas has been chosen by the board of directors of Menard Electric Cooperative to serve as manager of the member-owned Cooperative, according to Morris Bell, board president. In making the announcement, Bell pointed out Schiller's outstanding service during the past 14 years in the rural electrification program.

Schiller will fill the vacancy created by the retirement of John E. Root, who had been manager of the Cooperative since 1965.

Schiller is a native of Ohio and is a graduate of Morehead State University in Morehead, Kentucky. He is a veteran of the Viet Nam conflict, having served in the U.S. Air Force and is a recipient of the U.S. Air Force commendation medal for his meritorious service in Viet Nam.

For the past four years Schiller has been employed by the National Rural Electric Cooperative Association as a senior management consultant. He has served as an interim manager of electric cooperatives in New Castle, Virginia and West Union, Ohio. He has also served electric cooperatives in Waco, Texas; Henderson, Kentucky, and was the manager of marketing operations for the Kentucky Association of Electric Cooperatives from 1973 until 1978.

Bell pointed out that Schiller has the experience, qualifications and maturity to efficiently and effectively manage the operations of the Cooperative.

Schiller and his wife, Chinena, have a daughter, Stacha, who is currently a sophomore in high school. His family will be joining Bob after the current school year is completed.

## Rates cut by 2.2 cents

Western Illinois Power Cooperative (WIPCO), our power supplier, and REA are creating a new financial plan for WIPCO. The first step taken to date has allowed WIPCO to reduce the wholesale cost of electricity to your cooperative.

On April 28, 1986, your board of directors voted to reduce the Cooperative's rates by 2.2 cents per kilowatt-hour, effective with the April 30 energy bill. The directors are encouraged with the reduction in rates and will con-

tinue to seek other methods to provide you with competitive electric rates.

Your assistance and cooperation in the use of electricity will be a valuable service to all cooperative members. National statistics indicate that each 1 percent of increase in kilowatt-hour sales alters the price approximately thirty-four one hundredths of a cent per kilowatt-hour. Mercury vapor security light charges have been reduced to \$7 per month. The Cooperative now has available high pressure sodium security lights, and the monthly rental charge is \$5.25. Please contact the Cooperative office should you desire to have a security light installed.

# 1936 to 1986 — 50 years of service

The 49th annual meeting of your Cooperative will follow by one day the 50th anniversary of your Cooperative. The Cooperative was incorporated under the laws of Illinois on September 9, 1936, and secured its first loan in the amount of \$135 thousand a few years later. In December of that year the MEADE Electric Company of Chicago submitted a low bid for construction of the first 120 miles of distribution line for Menard Electric.

On February 26, 1937, a group of federal and state officials along with a large group of Cooperative members gathered near a pole ready to be placed in the ground near the Tipton School west of Sherman.

Construction pushed steadily ahead during the spring and summer of 1937 and on August 7 of that year electricity flowed through the first section of distribution line.

During the past 50 years many highlights have occurred. Some of the most notable are as follows:

May 11, 1935	Rural Electrification Administration created
June 13, 1936	Unofficial beginning of Menard Electric Cooperative
Sept. 9, 1936	Certificate of Incorporation granted
Sept. 12, 1936	First loan approved

## Request for bids

The Cooperative will accept sealed bids until twelve noon on May 23, 1986, on the following:

- 1) 1980 Ford Courier, 2 liter engine with 47,326 actual miles.
- 2) 1976 Chevrolet C50 350 engine with flat bed — 18,500GVW with 30,793 actual miles.
- 3) 3,000 gallon gasoline storage tank (18 feet by 64 inches) 12 years old.
- 4) Fuel pump (24 Key gas box) Model 52K24.

The above items are available for inspection at the Cooperative office from 8 a.m. to 4:30 p.m., Monday through Friday. Members of the Cooperative are invited to submit bids on the above and the Cooperative reserves the right to reject any and all bids.

## Economic study report

On April 7, 1986, representatives of L. R. Christensen Associates, Inc. of Madison, Wisconsin, met with the board of directors and friends of the Cooperative and presented an interim report of their study dealing with alternate sources of electrical energy for your Cooperative.

While the report was interim in nature, the board of directors are currently determining the value of additional study or the termination of the project.

It is anticipated that a representative of Christensen Associates, Inc. will appear at the 40th annual meeting for a summation of their findings.

Dec. 19, 1936	First contract for construction awarded
Feb. 26, 1937	First pole set near the Tipton School
Aug. 7, 1937	First home electrified on Cooperative lines
April 1942	Cooperative moves from Farm Bureau into present headquarters
Feb. 19, 1949	Howard O. Bell appointed manager, replacing A. E. Becker
Jan. 1960	Menard Electric Cooperative joins WIPCO with members approval
March 8, 1965	John E. Root succeeds Mr. Bell as manager
May 12, 1986	Rober E. Schiller succeeds John E. Root as manager

The organizers of your Cooperative 50 years ago were restless and aggressive people. A lot of the old-timers shook their heads as the generation of the founding board moved ahead with their plans, hopes and ambitions. They were people of vision and believed that a step forward was better than a slip backward.

At the Cooperative today we are determined to keep moving forward and to do a better job for you, our members and our owners.

### Office closing

The Cooperative office will be closed on Monday, May 26, 1986, in observance of Memorial Day.

## Menard Electric is here

Night had fallen on the country side  
The little farm stood dark and still,  
Feeble lights from the windows shone  
The creaking sound was from the old windmill.

In the early morn with lantern in hand  
The old pump handle so cold, your hands ached,  
In the dimness of the barn you looked and you felt  
"Get the lantern in this corner for goodness sake."

Mother was cooking on an old iron range  
Children studying by too dim a light,  
Washing on the board was no fun, I'll say  
Starting early at the break of day.

Little country schools were lighted by gas  
So careful they had to be,  
But there was relief coming soon  
Convenience for you and me.

Menard Electric came in to help  
Electricity became a happy delight,  
Each farm was glowing with care  
Menard Electric was here with light.

No more darkness on the farm  
All chores had been lighter made,  
From out of the dark came a shining light  
Menard Electric was here with light.

Happy 50th anniversary Menard Electric  
Many more years to come,  
More light to you, may your troubles be few  
Congratulations for a job well done.

Written and composed by Evelyn (Pugh) Patrick

*(Editors note: Mrs. Patrick is a former member of Menard Electric Cooperative and currently resides in Petersburg. We are indebted to her for the above and recognize her as an outstanding composer.)*



Above: Representatives of the three member-systems of SIPC follow in the annual report as treasurer Harold I. Dycus makes his report. Below: David Ramsey (left) of Omaha talks with Brandon Jackson, REA general field representative.

# Another good year for SIPC

Use of electricity throughout the three member-systems of Southern Illinois Power Co-operative (SIPC) was up by 4.1 percent in 1985, the greatest year-to-year increase since 1978.

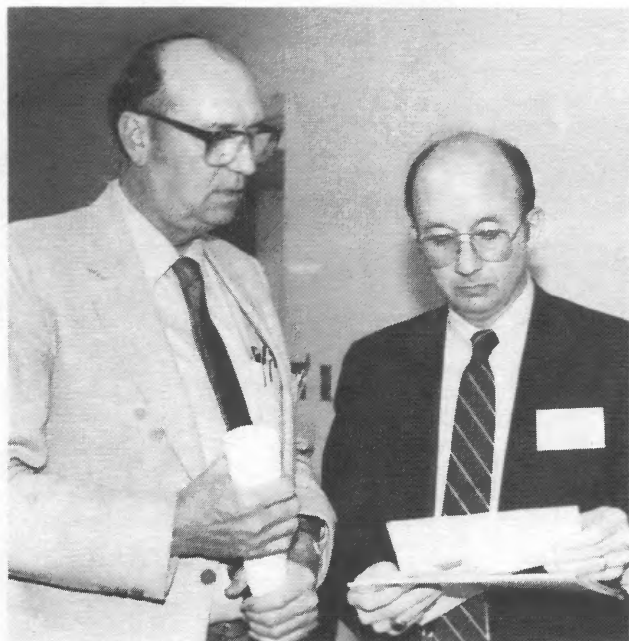
Reporting to representatives of the member-cooperatives during SIPC's annual meeting March 27 at SIPC's Lake of Egypt headquarters

near Marion, officers and management said the total sales to member-cooperatives exceeded 700,000 megawatt-hours (mwh) for only the second time in the cooperative's history. Board president Guy Casper of Cypress and executive vice president and general manager Jim Chapman said in their combined report that 1985 sales totalled 701,264 mwh compared to 1980's record of 702,178.

"The year 1985 was another good year for Southern Illinois Power Co-operative," they said, noting that 1985 marked the third consecutive year in which purchases by the three member-cooperatives had increased, following slight decreases for two years.

The three member-systems of SIPC are Egyptian Electric Cooperative Association, Steeleville; Southeastern Illinois Electric Cooperative, Eldorado, and Southern Illinois Electric Cooperative, Dongola. They serve about 37,000 meters in a block of 19 Southern Illinois counties.

In 1985, the cooperative continued to purchase coal at a price



## Two cooperatives select managers

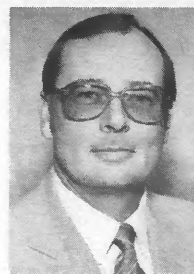
Spoon River Electric Cooperative, Canton, and Menard Electric Cooperative, Petersburg, have selected new managers.

Gregory A. Campbell has been named executive vice-president and general manager of Spoon River.

Campbell has been on the Spoon River Electric staff since March 1983. He was promoted to assistant

manager in March 1985. He assumed the position of acting manager last November following the retirement of William H. McCamey.

Campbell was raised in Canton and is a graduate of Canton Senior High School and Northern Illinois University, DeKalb. He served in the U.S. Army and is a veteran of the Vietnam war. He worked for Consolidation Coal Company and, prior to coming to Spoon River Electric, Campbell was personnel director at



Campbell



Smith

Peace River Electric Cooperative in Wauchula, Florida.

Dorland W. Smith is the new manager of Menard. He was named to the post May 19. Smith has been employed by Menard Electric Cooperative since 1958, serving as power use adviser, data processing supervisor and staff assistant.

Smith fills the vacancy created by the retirement of John Root, who retired from Menard Electric after more than 20 years of service.

Smith is a native of Laporte County, Indiana. He attended Western Illinois University and was graduated from the University of Illinois at Champaign with a bachelor of science degree in agricultural engineering.

# Healthy, Wealthy and Wise!

It makes good sense to protect your assets, and your health is one of your most valuable assets of all. Your good health enables you to work and provide all the things you and your family need.



Now, while you're healthy, is the time to make sure that you're properly insured.

By planning ahead, you can help provide a financially secure future for your family, even when serious illness or injury strikes.

The following plans are available for electric cooperative and telephone cooperative members:

- Disability Income Protection • Major Medical Protection
- Cancer Cost Supplement • Mutual Care (for those 65 and over)
- Catastrophic Hospital Coverage • Life Insurance
- Basic Hospital Coverage with Maternity Coverage

These plans are underwritten by Mutual of Omaha and United of Omaha and available at Association Group rates.

If you'd like to know more, just fill out and mail this coupon.



People you can count on...

Life Insurance Affiliate:  
United of Omaha

Mutual of Omaha  
Insurance Company

Home Office:  
Omaha, Nebraska

Illinois Rural Electric Cooperative Insurance Plan  
Mutual of Omaha Insurance Company  
Mutual of Omaha Plaza, Omaha, NE 68131

Please see that I receive full details on the plans available to me as an Illinois Electric Co-op member.

- Income Protection     Hospital     Life  
 Mutual Care         Cancer        Major Medical

Name \_\_\_\_\_

Address \_\_\_\_\_

City \_\_\_\_\_ ZIP \_\_\_\_\_

Phone \_\_\_\_\_

Name of Co-op \_\_\_\_\_

## BACKYARD GARDENERS

### At Last! A Small Tiller That Works!



Forget about big, clumsy, yank-you-along tillers forever!

The Mantis tills a sensible 6" to 9" wide (not 20" or more like big tillers). Mantis weighs just 20 lbs. (not 200 to 300 lbs.). Mantis' tines go through tough soil like a

chain saw goes through wood. No jerking... no yanking you along... and Mantis turns on a dime! Put the fun back in gardening.

©MMC 1986

### 3-WEEK IN-YOUR-GARDEN TRIAL!



Mantis Manufacturing Co.  
1458 County Line Rd. Dept. 1010  
Huntingdon Valley, PA 19006

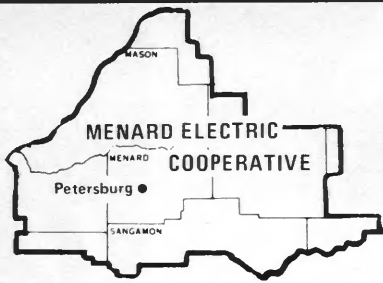
Please send more information.

Name \_\_\_\_\_

Address \_\_\_\_\_

City \_\_\_\_\_

State \_\_\_\_\_ Zip \_\_\_\_\_



# Menard Electric News

MENARD ELECTRIC COOPERATIVE 217-632-7746 PETERSBURG, ILLINOIS 62675

## Co-op Comments

Ronny R. Harden of Route 5, Springfield, completed 15 years of service with your Cooperative June 1. Ron is a journeyman lineman for your Cooperative, currently disabled.

Mr. and Mrs. Terry Entwistle of rural Petersburg will celebrate their 15th wedding anniversary June 22. Terry is the general foreman for your Cooperative.

Mr. and Mrs. Jack Powers of rural Petersburg celebrated their 25th wedding anniversary June 10. Judy is the cashier-receptionist in your Cooperative office.

Mr. and Mrs. Albert Hinrichs of Petersburg will celebrate their 45th wedding anniversary on June 21.

Albert was a long-time general foreman for your Cooperative and retired in December of 1975.

The energy bills which you receive on a monthly basis many times vary substantially from season to season. Some Cooperative members have a high winter usage while others have a high summer usage. The Cooperative offers budget billing, which may help to average out your energy bills throughout the year. June is the time to begin budget billing and we invite your inquiry on how budget billing works.

If you are interested in leveling your bill throughout the year, please contact the Cooperative office and we will be happy to provide you with a proposed monthly payment which would levelize your high and low use periods of energy.

tors it is necessary to implement an environmental surcharge effective with shipments on January 15, 1986. A surcharge will be added to all treated product invoices."

There is nothing wrong with teenagers that reasoning with them won't aggravate.

It takes about 10 years to get used to how old you are.

June is a popular month not only for weddings. It also honors America with the beginning of a 21-day salute to celebrate and honor our country on June 14, in addition, World Environmental Day, National Physical Therapy Week and National Ragweed Control Month. We also celebrate Dairy Month, Adopt a Cat Month, National Rose Month and Father's Day.

## Dorland Smith chosen as MEC manager

Dorland W. Smith of Havana is the new manager of Menard Electric Cooperative. He was named to the post on May 19 during the regular meeting of the board of directors. Smith has been employed by Menard Electric Cooperative since 1958, serving as power use adviser, data processing supervisor and most recently as staff assistant.

The Menard Electric Cooperative board of directors made Smith's appointment after Robert E. Schiller, of Salado, Texas, informed the board he was unable to assume a full time position as manager due to unexpected personal problems. Schiller had been hired to fill the vacancy created by the retirement of John E. Root, who left Menard Electric Cooperative earlier this month after more than 20 years of service.



Dorland Smith

Smith is a native of La Porte, Indiana. He attended Western Illinois University and was graduated from the University of Illinois at Champaign

with a bachelor of science degree in agricultural engineering. He is married to the former Marilyn Koke of Havana. The Smiths have three children: Lisa and Eric both students at the University of Illinois, and Lynn, a student at Havana High School.

"I welcome the challenge of managing Menard Electric Cooperative and appreciate the confidence the board of directors has shown in me." Smith said after his appointment. "Menard Electric Cooperative and other electric cooperatives throughout Illinois face serious problems trying to control the cost of wholesale power and provide service to members at competitive rates. I look forward to working with the board of directors, our members and other cooperatives in the area to lower our costs and achieve more reasonable rates for our members."



Entwistle, left, and Atterberry

## Atterberry retires after 38 years with Menard Electric

Carl T. Atterberry of Petersburg, long-time Cooperative employee, will be retiring July 4. Carl is the dean of Cooperative employees and was first hired September 7, 1948, as an apprentice lineman.

He worked under Albert Hinrichs, then the line superintendent, and in 1952 Carl became a journeyman lineman. In 1957 Carl became crew foreman of the hot stick crew. Later he was promoted to assistant line superintendent, he then became general foreman in April of 1972.

When Carl first came to the Cooperative, he became very proficient in digging post holes by hand in order for the electric poles to be set, although the Cooperative did have an A-frame boom truck to assist in setting the poles. Later, the Cooperative purchased an electric-driven pole auger and now the modern hydraulic digger derrick vehicles are utilized along with bucket trucks which makes for less

climbing and quicker response to outages. He points out in 1948 that the only communication the lineman had with the office or with other employees was to drive back to the Cooperative office or borrow someone's telephone if they had one. He has seen the communications go from nothing to radio telephones which were utilized for a few years until the current modern two-way radio system which keeps the linemen in touch with each other and with the office whenever communication is needed.

Carl indicated that he had seen the miles of line increase during the past 38 years by nearly 40 percent and that the membership of the Cooperative has increased nearly 80 percent. He also points with pride to the improvement in continuity of service, upgrading of electric lines, and improved voltage throughout the Cooperative service area.

During his many years of service, Carl has been involved and worked in numerous storms. The "grandfather"

of which, he points out, was the ice storm of 1978. He also indicates that the ice storm of 1949 is still vividly in his mind. Carl has the distinction of having worked under all of the Cooperative managers who have been employed since 1936: A. E. Becker, Howard Bell and John E. Root. He has seen a complete change of the board of directors, as well as, a complete change of Cooperative employees. In 1948, the Cooperative had limited substations and now he points with pride that the Cooperative now has 16 substations serving the membership. He also recalls when all the electricity purchased by Menard Electric was purchased from the City of Springfield.

Carl has numerous hobbies to keep him busy, such as fishing, woodworking, traveling and golfing. He and his wife, Robilee, plan to continue their residence in Petersburg. We congratulate Carl on his 38 years of service and wish him well in the days and years ahead.

## Entwistle new foreman

Terry Entwistle of rural Petersburg has been promoted to general foreman of your Cooperative, as of May 1.

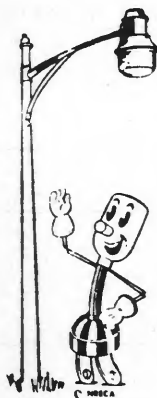
Terry began employment with your Cooperative on November 5, 1970, as an apprentice lineman, became a journeyman lineman, leadman and most recently a crew leader for your Coop-

erative.

Entwistle will direct all construction maintenance and operational personnel. In addition, all Cooperative vehicles and equipment will be in his charge. Terry and his wife, Linda, reside on Route 3, Petersburg.

### OFFICE CLOSING

The Cooperative office will be closed on Friday, July 4, 1986, in observance of Independence Day.



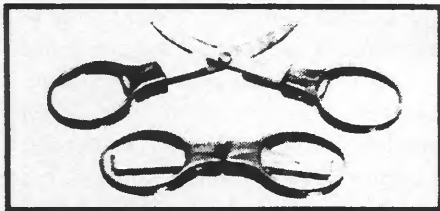
## New security lights offered

Your Cooperative now has available the high-pressure sodium security lights in addition to the mercury-vapor security lights which have been available for many years.

Recent studies undertaken by your Cooperative establish that the high-pressure sodium light creates less kw demand and uses fewer kilowatt-hours in comparison to the mercury-vapor

security lights. Therefore, high-pressure sodium lights are available for \$5.25 per month and the mercury-vapor lights have been reduced to \$7 per month.

If you wish to replace an existing mercury-vapor light with a high-pressure sodium light, please contact the Cooperative office.



**DELUXE FOLDING SCISSORS 79c**

An open & shut case of convenience. Quality steel blades, cushioned plastic handles. ingeniously engineered to fold to absolutely safe 3" size to slip easily into pocket, purse, sewing kit, first aid kit, glove compartment, tackle box, etc. Great for in-store coupon clipping. Vinyl case included. A great value at only 79c Pr. 2 Pr. \$1.50 6 Pr. \$4.25 1 Dz \$7.95 ppd. Fund Raisers write for quantity prices. Money-back guarantee. Pls. allow up to 6 weeks for delivery.

**TWO BROTHERS, INC.** Dept. FS-690  
1602 Locust St. St. Louis, MO 63103

**DID YOU KNOW?**

That old stock tank, water reservoirs, etc., coated with Virden Tank Coat, are better than new ones! Fix it and forget it! Let us send you complete information. Serving Farm & Ranch Since 1950. **VIRDEN PERMA-BILT CO.**, 2821 Mays St., P.O. Box 7160IN, Phone: 806/352-2761, Amarillo, Texas 79114-7160

**Dentures**

**\$195**

Total Cost For Both  
Upper & Lower Dentures  
**ONE DAY SERVICE**

**General Dentistry**

Complete Dental Service  
plus Ozark Hospitality  
**\$150.00**

Single Porcelain Crown  
**\$405.00**

3 Unit Procelain Bridge

1st tooth extraction **-\$15.00**

Everyone thereafter **\$10.00**

**WE WANT YOU SATISFIED!**

We also process Insurance Forms  
free hookup for your  
recreational vehicle

Please call for an appointment or  
**WRITE FOR FREE DETAILS**

**Frederick C. Lauer DDS**  
**Mid-America**  
**Denture Clinic**

Hayward Drive Rt. 3, Box 19C  
Mt. Vernon, Mo. 65712

**(417) 466-7196**

**1-800-843-9348**

**Selling Direct!**

**FACTORY TO YOU** **\$529.95**  
**COM-PARE AT \$700.00**

**PUBLIC SALE** **★ 8 H.P.**  
**26" CUT** Briggs & Stratton engine riding lawn mowers.

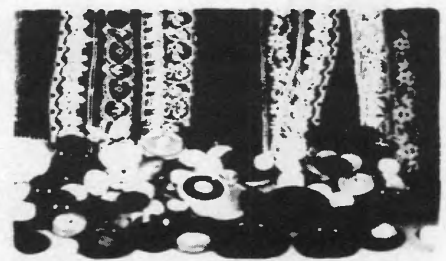
All Attachments Available **★ WE BUILD IT ★**  
Order now or send for free brochure while they last!

817-640-1198  
**CONTINENTAL MFG. DEPT. IL**  
3205 E. Abrams St. Arlington, Tx 76010

**HIGH WHEEL FACTORY SPECIALS**  
**new in crates**

\* Big Powerful 5 H.P. Engine  
**22 INCH CUT**  
Briggs & Stratton engines

Ball Bearing Wheels  
Self Propelled - Hi Wheel  
**DELUX Mower**  
Compare at \$599.00  
Now Only **\$429.95**



**40 YARDS LACE \$2.25**

**LACE—LACE—LACE...40 yards of Lace**

in delightful patterns. Edging, insertions, etc. Assorted beautiful designs, colors and widths. Pieces at least 10 yards in length—none smaller. Marvelous for dresses, pillowcases etc. Terrific as hem facing. **Only \$2.25** (About 5 1/2¢ yd.) or double orders **\$4.35**. 3 orders just **\$6.25**. Pls include 50¢ pstg. and hdng. with EACH set of 40 yards you buy. Satisfaction guaranteed! **FREE** with lace **50 BUTTONS!** 50 NEW High Quality Buttons. Assorted colors, sizes and shapes. Sent **FREE** with each lace order. Please allow up to 6 weeks for delivery.

**LACE LADY** 1602 Locust St. Dept. BL-959 St. Louis, MO 63103

**After you leave the hospital, what then?**

Recovery from some accidents or illnesses require more care than your family can provide. More and more doctors today are recommending the care of a skilled nursing facility. But your hospitalization insurance or Medicare may not cover care in a skilled nursing facility — even if your doctor prescribes it.

CNA's Skilled Nursing Facility Plan for people age 60 and older could be the answer.

It provides benefits in addition to Medicare or any other insurance you may carry that can be paid directly to you. There is no limit to the number of times you can receive benefits, and these benefits will not be reduced because of age. Find out more about CNA's Skilled Nursing Facility Plan.

Complete and mail the coupon below, or call: **217-529-9275**  
**Collect**

The skilled Nursing Facility Plan is underwritten by Continental Casualty Company, one of the CNA Insurance Companies

Insurance from  
**CNA**  
For All the Commitments You Make

Yes! I want to know more about CNA's Skilled Nursing Facility Plan. I understand there is no obligation.  
Mail to: **CNA INSURANCE COMPANIES**  
P. T. Cimarossa & Associates  
P.O. Box 11026  
Springfield, IL 62791-1026

Name \_\_\_\_\_

Address \_\_\_\_\_

City \_\_\_\_\_

State \_\_\_\_\_ Zip \_\_\_\_\_



work with. At 40 degrees F or so, an air-to-air heat pump would do an excellent job for you. At 20 degrees, it isn't exactly a bargain, and as the temperature plummets, efficiency drops sharply.

Closed-loop, groundwater heat pumps were designed to correct these problems, and they do a very good job.

They use water from a pipe grid buried in the yard — or a well — to constantly bring in water at about 50 degrees F, which the new, sturdier heat pump concentrates and shunts into the house during the winter. In summertime, the process is reversed, and the unit moves heated air out of the house and puts it back into the grid, to warm the house next winter.

You need to be careful to build enough of a grid to warm your home

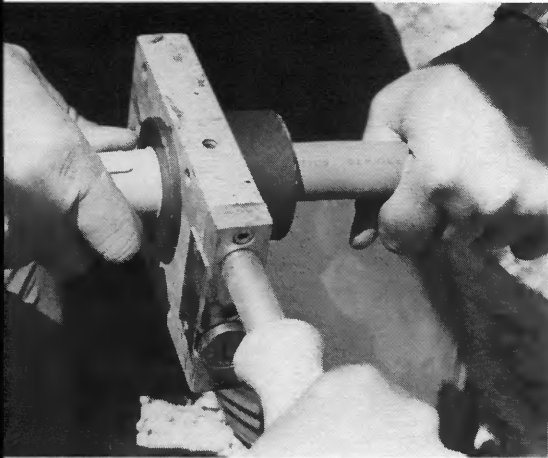
all winter, but not too much, or you'll be wasting money. There's no benefit to overdoing it.

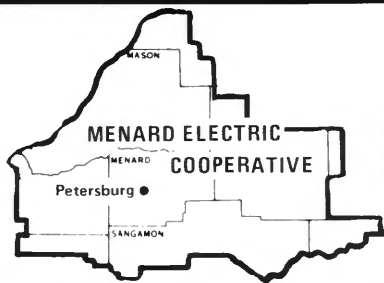
"It depends on the soil," says Alfred Toennies who, with his sons Randy and Mark, installed the Water Furnace heat pump at the Hempens' home. "We dug down here and found that the ground was pretty dry," he adds, "so we decided to put in a grid made up of 1,500 feet of pipe. If the soil were better, 1,200 feet would have been enough. And you want to have good soil contact with the pipe once it's buried, and the grid should be far enough beneath the surface that the temperature doesn't fluctuate."

The Hempens' grid is laid one pipe above another, the lower one at five feet, the other two feet above it. The house, which John is building himself, "with a lot of help from friends and relatives," is well insulated, but is not a super-insulated unit. It has an inch of urethane foam on the outside, three and one-half inches of fiberglass in the stud cavities, and a carefully built vapor barrier. His brother, Dennis, is doing the wiring, and, Joanne says, "We're going to have plenty of outlets."

Their house, while carefully insulated, has no special or unusual features that would make it extraordinary, so it will be a good test of the system.

Clockwise from below, Randy and Mark Toennies discuss the installation. With good earth contact such an important part of the operation, backfilling is done very carefully. A hand-held, electrically operated machine is used to splice pipe ends to prevent leaks.





# Menard Electric News

MENARD ELECTRIC COOPERATIVE 217-632-7746 PETERSBURG, ILLINOIS 62675

## Manager introduced, rate drop announced at annual meeting



Two area residents have been elected for the first time to the board of directors of Menard Electric Cooperative and two sitting directors were reelected at the 49th annual meeting June 14 at PORTA High School in Petersburg.

The new directors are Carroll F. Cline of Pleasant Plains and Robert I. Brauer of Oakford. Reelected was Meredith L. Worner of Manito. Edward L. Allspach of Mt. Pulaski will continue on the board after being elected to serve the two years remaining on the term of Charles McMillan, who resigned from the board in January due to other commitments. Allspach has served since his appointment to the board in February.

In the balloting, Cline defeated John W. Bernard, Jr., of Petersburg to represent Cooperative District 1, while Worner defeated Dorothy Kreiling of Manito to represent District 6. Brauer and Allspach were unopposed.

Brauer will take the board seat

*Dorland W. Smith, manager, right, greets members of the board of directors elected during the 49th annual meeting of Menard members held June 14, in Petersburg. Winning election were, from left, Edward L. Allspach of Mt. Pulaski, Meredith L. Worner of Manito, Carroll F. Cline of Pleasant Plains and Robert I. Brauer of Oakford. Cline and Brauer were elected to their first three-year terms while Worner was reelected to his fifth three-year term. Allspach was elected to fill out the two years remaining on the term of Charles McMillian who resigned from the board in January due to other commitments.*

vacated by Howard W. Montgomery and Cline will succeed Hickory H. Hurie of Tallula. Montgomery and Hurie did not seek reelection.

Electric rates paid by members of Menard Electric Cooperative will remain stable for the balance of 1986 and through 1987, according to reports by Morris L. Bell of Chandler-ville, president of the board, and Dorland W. Smith, manager. Bell reminded members that rates were cut by 2.2 cents per kilowatt-hour in April. "We're trying to take any action possible to lower rates to our members," Bell said. "We're committed to holding the line on rates at least through 1987."

Smith echoed Bell's promise of

stable rates through 1987 and said that WIPCO and Soyland Power Cooperative, which share ownership in Clinton along with Illinois Power Company, are negotiating with the Rural Electrification Administration to restructure their Clinton-related debt. "We believe this should enable us to have rates continue at a reasonable level for years to come," he said.

Smith, in his first report as manager, reviewed several rate options available that can lower costs if members can limit their energy use at times when total energy demand on the cooperative system is high. He said the cooperative is paying \$150 to any member installing a new high-efficiency electric water heater. In addi-

tion, members can earn a credit of up to \$12 per month if they will allow the cooperative to install a radio-controlled load management switch on their water heater, Smith said.

"Smith also said the cooperative has introduced two new rates to members using three-phase and large power where demand cost is a major portion of the billing. These rates are available to members who can switch some of their energy consumption to off-peak periods or allow the cooperative to interrupt their service during times of peak energy use.

Douglas W. Caves of Christensen Associates, Madison, Wisconsin, reported to members on an economic study the firm conducted during the past year to determine if it would be economically feasible for Menard Electric Cooperative to sever its connection with Western Illinois Power Cooperative and possibly obtain lower cost wholesale power from another supplier. The study was requested in a resolution approved by Menard members at their annual meeting in 1985.

Caves emphasized that his firm studied the potential economic benefits to members of leaving WIPCO and did not study the legal feasibility of breaking contracts existing between Menard and WIPCO.

Caves said wholesale power supplies could be purchased more cheaply from other sources, but because of damages that would have to be paid to WIPCO, costs after switching power suppliers would actually be higher. He said bulk power costs alone could be as much as \$30 million less over a 20-year period from one investor-owned utility, but that Menard members would have to pay penalties to WIPCO estimated at \$63 million, plus legal fees if WIPCO should sue. In addition Caves said the cooperative would probably have to repay loans to REA if it severed its connection with WIPCO.

"Yes, you can save by switching, but weighed against potential losses there is no benefit," Caves said. "The way to go is not to just pull out of WIPCO."

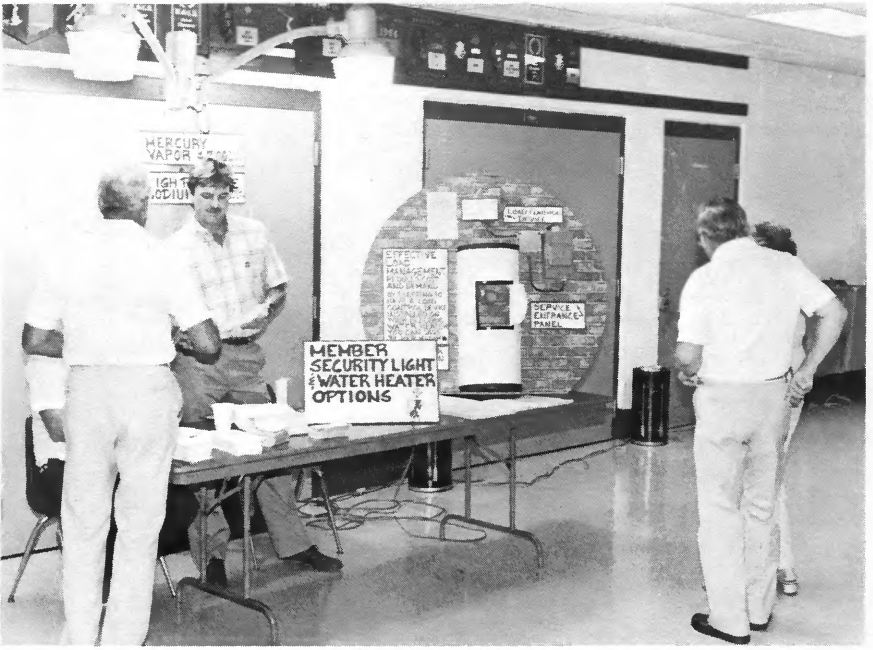
Also appearing on the Menard annual meeting agenda was Earl W. Struck, Director of the Legal and Public Affairs Department, Association of Illinois Electric Cooperatives.

Struck reported on state and national legislative matters affecting the economic well being of the electric cooperatives and their members.

Entertainment for the meeting was provided by PJ's Backyard Band. Before the meeting members were served a pork chop dinner prepared by the Mason County Pork Producers Association.

At the conclusion of the annual meeting of members, the board of directors met to reorganize for the

coming year. Bell was reelected president while Dale R. Lepper of Ashland was reelected vice president. Worner was reelected secretary and James G. Graff of Middletown was reelected treasurer. Bell was named to succeed Howard Montgomery as the cooperative's representative on the board of directors of the Association of Illinois Electric Cooperatives, the Springfield-based statewide service association. Graff was named alternate to Bell on the AIEC board.



Top photo: Morris Bell of Chandlerville, president, introduces Dorland Smith of Havana, who was chosen manager of Menard Electric Cooperative at the regular May board meeting. He has been employed by the cooperative in various capacities since 1958. Above, the water heater incentive program and security light exhibit were popular stops for members.

### SHRIMP NEWBERG

- 2 lbs. shrimp, cooked and deveined
- 1/2 stick butter
- 4 green onions
- 1 small yellow onion, chopped
- 1 small green pepper, chopped
- 4 cups milk
- 4 tablespoons cornstarch
- 2 teaspoons chicken soup base
- 2 cups American cheese
- 2 tablespoons cooking sherry

In a skillet saute the onions, celery and green pepper. In a saucepan heat the milk. Add the cornstarch and the soup base stirring constantly with a wire whisk until the mixture thickens to a cream sauce consistency. Reduce the heat and add the cheese. Simmer until cheese is melted and add the shrimp and onion mixture. Simmer for about 30 minutes. Add the sherry and taste for seasonings. Serve over rice or cheese souffle.

### SPAGHETTI CASSEROLE

- 8 cups water
- 2 teaspoons salt
- 1 cup spaghetti
- 1 1/2 lbs. hamburger
- 1 small onion, chopped
- 1 1/2 cups tomatoes
- 1 tablespoon Worcestershire sauce
- 1/2 cup grated cheese
- Dash of paprika

Bring water to boil; add salt and spaghetti. Cook until tender. Brown hamburger and onion in skillet; add tomatoes and Worcestershire sauce. Simmer for 20 minutes. Add spaghetti to meat mixture; mix well. Pour into a 2-quart casserole; top with cheese and paprika. Bake at 350 degrees for 20 minutes. Yield: 4 to 6 servings.

### CHIMICHANGAS

- 1/2 teaspoon salt
- 1 lb. lean ground beef
- 1 garlic clove, crushed
- 1 teaspoon ground cumin
- 1 teaspoon oregano, crushed
- 1/4 cup canned chopped green chilies
- 1/4 cup bottled taco sauce
- 1/4 cup sour cream
- 2 tablespoons cider vinegar
- 1/2 cup butter or margarine, melted
- 6 seven-inch flour tortillas
- 1 pkg. (4 oz.) shredded cheddar cheese
- 1/2 cup sour cream
- 1/2 cup bottled taco sauce
- 1 1/2 cups shredded lettuce
- 1 ripe avocado, sliced

Sprinkle salt in medium skillet. Place over medium heat. Add beef, garlic and spices. Cook, crumbling with fork, until meat loses its pink color. Stir in remaining filling ingredients. Remove from heat; cool. In 8-inch skillet melt butter or margarine. Dip both sides of one tortilla into butter or margarine; drain off excess. Mound a rounded 1/3 cup filling on center of tortilla. Fold tortilla envelope fashion. Place seam side down in an ungreased 11 3/4 x 7 1/2-inch baking dish. Repeat with remaining tortillas and filling. Can be made ahead. Cover and refrigerate up to 24 hours. Preheat oven to 500 degrees. Uncover chimichangas and bake until crispy, about 15 minutes. Sprinkle with cheese, return to oven for a few seconds to melt cheese. Serve topped with sour cream and taco sauce, with lettuce and avocado on the side. Makes 4 servings, about 855 calories each.

### BEEF CANNELONI

- 3 lbs. ground beef
- 1 small onion, finely chopped
- 3 ribs celery, finely chopped
- 1/2 green pepper, finely chopped
- 1/2 teaspoon pure granulated garlic
- 1/2 teaspoon chili powder
- 1 teaspoon cumin
- 1/2 teaspoon seasoning salt
- 2 tablespoons red cooking wine or burgundy
- 1/2 cup tomato puree
- 1/2 cup sour cream
- Sauce:
- 4 cups milk
- 4 tablespoons cornstarch
- 2 teaspoons chicken soup base
- 1/2 cup American cheese
- 1 cup parmesan cheese, freshly grated

In a saucepan saute the beef, breaking it apart with a fork, until it is lightly browned. Add the remaining ingredients and simmer about 30 minutes. Do not let mixture boil. Place mixture, divided evenly, into 16 crepes. Roll and place seam down, side by side, in a lightly greased baking dish. In a saucepan heat the milk. Add the cornstarch and soup base stirring constantly with a wire whisk until mixture thickens to a cream sauce consistency. Add the cheese and simmer until cheese is melted. Pour sauce over crepes. Sprinkle with parmesan cheese and bake at 350 degrees until bubbly. Serves 8.

#### Crepe Batter:

- 1 cup flour
- Dash salt
- 2 eggs
- 2 tablespoons butter, melted
- 2 cups milk

In a bowl sift the flour and the salt together. Add the eggs, butter and milk and beat with a mixer until smooth. Lightly butter a small skillet or crepe pan with a pastry brush. Pour a small amount of batter into a pan and roll it out to the edge of the pan. Cook like pancakes, turning once until lightly browned.

### HOT CHICKEN SALAD

- 2 6 oz. jars chicken
- 1 can cream of chicken soup
- 2 cups chopped celery
- 1 tablespoon minced onion
- 1/2 teaspoon salt
- 1/2 teaspoon pepper
- 1 tablespoon lemon juice
- 1/2 cup slivered almonds
- 3 hard-cooked eggs, diced
- 3/4 cup mayonnaise
- 2 cups crushed potato chips

Mix all ingredients except potato chips; place in casserole. Cover with potato chips. Bake at 350 degrees for 1 hour. Yield: 4-5 servings.

### SALMON CROQUETTES

- 1 15 oz. can pink salmon, drain and save juice
- 1 egg
- 1/2 cup flour
- Pepper to taste
- 1/2 cup chopped green onion
- 1/2 teaspoon Worcestershire or to taste
- 1/4 cup salmon juice
- 1 heaping teaspoon baking powder
- Deep fat for frying

Mix salmon and egg with fork. Add 1/2 cup sifted flour and stir. Mixture will be thick. Add pepper, onions and Worcestershire. In the 1/4 cup salmon juice, put the baking powder and beat with fork until it foams. Pour this into salmon mixture and mix with fork. Drop by small spoonful into deep hot fat. Be sure and cook within 15 minutes of mixing. Very light and lacy. Serves 4 to 6.

### BANANA PUDDING

- 1 large instant vanilla pudding
  - 1 cup Eagle Brand milk
  - 2 cups sweet milk
  - 1 large non-dairy whipped topping
  - 4 or 5 bananas that have been soaking in frozen orange juice concentrate
- Mix pudding according to package directions. Add Eagle Brand and sweet milk. Fold in non-dairy whipped topping. Layer until all mixture is gone.

#### Icing:

- 1 cup sugar
- 1/3 cup water
- 2 tablespoons white corn syrup
- 1 teaspoon vanilla
- 4 or 5 egg whites, beaten
- 1/2 teaspoon cream of tartar

Cook sugar, water, corn syrup and vanilla to a soft boil stage. Fold in egg whites that have been beaten with cream of tartar. Pour syrup over egg mixture slowly, beating all the time. Place on top of pudding. Brown in oven.

### BEEF ENCHILADAS

- Meat Filling:
- 1 lb. ground meat
- 1 clove garlic, chopped
- 1 tablespoon water
- 1 can (1 lb.) kidney beans
- 2 teaspoons salt
- 1 tablespoon vinegar
- 1 tablespoon chili powder

In medium skillet over low heat, saute meat with garlic, salt, vinegar, water, and chili powder until browned. Stir in beans and set aside.

#### Tomato Sauce:

- 3 tablespoons salad oil
- 1 clove garlic, chopped
- 1/4 cup chopped onion
- 1 tablespoon vinegar
- 1 cup boiling water
- Dash ground cumin
- 1/2 teaspoon salt
- 2 cans (10 1/4 oz.) tomato puree
- 1 beef bouillon cube
- 2 tablespoons chopped green chilies
- Dash pepper

In hot oil in skillet, saute garlic and onion until golden (about 5 minutes). Remove from heat. Stir in flour until smooth; then stir in tomato puree, vinegar and bouillon cube (dissolved in water). Bring mixture to boiling point, stirring over medium heat. Add green chilies, cumin, salt and pepper; simmer uncovered about 5 minutes. Use 10 tortillas, frozen or homemade. 1 cup grated sharp cheddar cheese or 1 cup cubed Monterey Jack cheese. To assemble: Preheat oven to 350 degrees. Place about 1/3 cup filling in center of each tortilla, roll up, arrange seam side down in a 13 x 9 x 2 baking dish. Pour tomato sauce over all, sprinkle with cheese. Bake about 25 minutes. Makes 5 servings. Meat and tomato filling can be made ahead of time and refrigerated. Reheat slightly when ready to use. Put each tortilla in hot grease for a minute before assembling.

# Summertime

### FROZEN COCONUT PIE

- 2 cups crushed graham crackers
- 1 stick margarine, melted
- 1 3 oz. pkg. cream cheese, room temperature
- 2 teaspoons sugar
- 1/2 cup milk
- 3 1/2 cups non-dairy whipped topping
- 1 1/3 cups coconut
- 1/2 teaspoon almond extract

Make crust from graham cracker crumbs and melted margarine. Beat cream cheese until soft, beat in sugar, gradually add milk and beat until smooth, fold in coconut, whipped topping and extract. Spoon into crust and freeze. Set at room temperature a few minutes before serving.

### PARTY CHEESE SANDWICH

- 1 8 oz. pkg. cream cheese
  - 1 small can pimento
  - 1 cup grated pecans
  - 1 cup salad dressing
  - 2 teaspoons grated onion
  - 1/2 stick butter
- Mix well and spread on party rounds.

### BIG BURGER

- 2 cups all purpose flour
- 2 cups mashed potato flakes
- 3/4 cup butter or margarine, softened
- 3/4 cup milk
- 11 oz. can condensed cheddar cheese soup
- 1/4 cup chopped onion
- 1/2 teaspoon salt
- 1/4 teaspoon pepper
- Filling:
- 1 lb. ground beef
- 1 tablespoon catsup
- 1 tablespoon prepared mustard, if desired
- Topping:
- 2 tablespoons milk
- 2 tablespoons butter or margarine, melted
- 1/2 cup mashed potato flakes

Preheat oven to 425 degrees. (To measure flour, lightly spoon into measuring cup; level off.) In large bowl, combine flour and flakes. Cut butter in thoroughly with a fork; stir in milk. Dough will be stiff. Press half the dough into a 10-inch circle on ungreased cookie sheet. Brown ground beef; drain. Stir in next six ingredients. Spread to within 1/4-inch of dough edge. On waxed paper, spread or roll out remaining dough into an 11-inch circle. Place over filling and seal edge; brush with milk. Sprinkle with mixture of melted butter and potato flakes. Bake 20 to 25 minutes until golden brown. Refrigerate any leftovers. Makes 4 to 6 servings.

the economic development business, but exists to help the people in small towns whose job it is to attract industry. "One community took a good, hard look at its image as a possible site for economic development and decided it needed to change," she says. "They asked us to help, and we set up a special economic development training course for their leaders. It dealt with how to market your community, how to put together a development

board and how to set up a retention team, to keep the businesses they already had. It's taking time and a lot of work, but they're turning things around."

Pat King, Jim Layton and Curt Murton, also from EICC, spoke briefly during the panel session, and emphasized that their efforts are geared toward facilitating efforts, rather than acting as economic development people themselves. "We can help prospective business people find legal, book-

keeping and financial help, and work with them to help set up customized training programs," Chillson says.

The four pointed out that local community colleges throughout the state have programs geared to helping community development efforts, and stressed that the nearest community college would be a good starting place for those seeking to start a new business, expand an existing one or to get community development help.

## WANT TO KNOW when a vehicle enters your drive?

- Master-Control with "whistler" (mounted in any enclosed space)
- Insulated cable (just below ground level)
- Vehicle Sensor (buried 6 inches deep)



Yes, I'd like more information

Name \_\_\_\_\_

Address \_\_\_\_\_

City \_\_\_\_\_

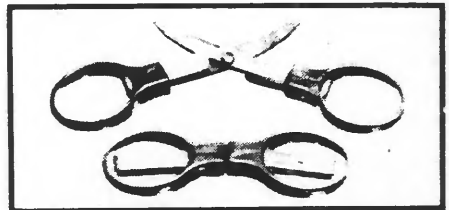
State \_\_\_\_\_ Zip \_\_\_\_\_

This multi purpose alarm system is designed to detect vehicle traffic in driveways, farm lanes, plant intersections, any area where a knowledge of vehicle movement is desired.

You'll find the DRIVE ALERT to be reliable and versatile with solid state electronics hidden detection sensor which can be located up to 5000 feet away and optional accessories.

### Joe Paxton Enterprises

R. 1, Box 313 Fortville, IN 46040  
317-326-2838



#### DELUXE FOLDING SCISSORS 79c

An open & shut case of convenience. Quality steel blades, cushioned plastic handles, ingeniously engineered to fold to absolutely safe 3" size to slip easily into pocket, purse, sewing kit, first aid kit, glove compartment, tackle box, etc. Great for in-store coupon clipping. Vinyl case included. A great value at only 79c Pr. 2 Pr. \$1.50. 6 Pr. \$4.25. 1 Dz. \$7.95 ppd. Fund Raisers write for quantity prices. Money-back guarantee. Pts. allow up to 6 weeks for delivery.

**TWO BROTHERS, INC.**  
1602 Locust St.

Dept. FS-691  
St. Louis, MO 63103

## BACKYARD GARDENERS!

### Don't Buy a Big Tiller...

For a  
Small Job!



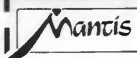
©MMC 1986

### — Buy A Mantis!

The exciting Mantis Tiller/Cultivator is changing the way Americans garden. It weighs just 20 pounds, so *anyone* can use it. It starts with a flick of the wrist . . . cuts through tough soils . . . turns on a dime . . . weeds in and around plants, between narrow rows and along fence lines . . . and runs *all day* on a gallon of gas!

**3-Week In-Your-Garden Trial**

**ON SALE FOR LESS THAN \$300!**  
Free Bonus Gift, Too!



Mantis Manufacturing Co.  
1458 County Line Rd., Dept. 1063  
Huntingdon Valley, PA 19006  
(215) 355-9700

Please send information on the Mantis Tiller/Cultivator and 3-Week Home Trial!

Name \_\_\_\_\_

Address \_\_\_\_\_

City \_\_\_\_\_ State \_\_\_\_\_ Zip \_\_\_\_\_

# Mobile Home Owners



## ROOF BLANKET

From Tremco, a subsidiary of  
The BFGoodrich Co.

### Want To Cut The Cost of Keeping Cool?

**Stop Roof Rumble &  
Leaks With Our New  
ROOF BLANKET®**

- 10 Year B.F. Goodrich  
Factory Warranty
- Financing Available

Our **ROOF BLANKET®**'s synthetic rubber membrane is fire-resistant, weather-resistant and requires no maintenance.

Made of Hypalon, a synthetic rubber developed by DuPont, our **ROOF BLANKET®** is installed in combination with Owens-Corning R-14 Fiberglass Insulation 4½ inches thick that's rolled on your existing roof.

Our one piece roof system is custom-made just for your mobile home in our warehouse. In a hail storm with 2-inch hail and with winds at 90 MPH, no damage was reported. It carries a 10-year BF Goodrich factory warranty. It eliminates yearly painting, coating or resealing. A no maintenance roof system.

Call for **FREE LITERATURE**

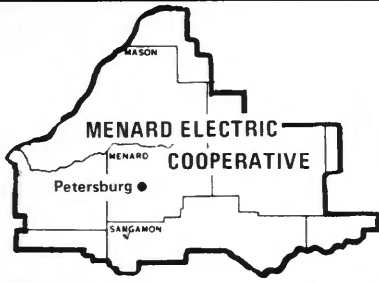
**1-800-821-7700**  
ext. 705



**Horizon Products, Inc.**

9301 E. 47th St., K.C., MO 64133

Providing all the comforts of home for 13 years.



# Menard Electric News

MENARD ELECTRIC COOPERATIVE 217-632-7746 PETERSBURG, ILLINOIS 62675

## Co-op Comments

Glenn Squires of Tallula completed 35 years of service with your cooperative on July 15. Glenn is the area serviceman in the Petersburg area.

Mr. and Mrs. Ronny R. Harden of RR 5, Springfield, celebrated their 30th wedding anniversary on July 28. Ronny is a journeyman lineman for your cooperative and returned to work July 14 having been disabled for the past three years.

Mr. and Mrs. Robert F. Zook of Athens celebrated their 35th wedding anniversary on July 29. Mr. Zook is the director of your cooperative from District 8.

Mark A. Bradley of RR 3, Petersburg, has been promoted to crew leader for your cooperative. Mark has been employed with your cooperative since September, 1972.

## Budget billing

The energy bills which you receive on a monthly basis many times vary substantially from season to season. Some cooperative members have a high winter usage while others have a high summer usage. The cooperative offers budget billing, which may help to average out your energy bills throughout the year. June is the best time to begin budget billing but we invite your inquiry on how budget billing works, any time.

If you are interested in leveling your bill throughout the year, please contact the cooperative office and we will be happy to provide you with a proposed monthly payment which would levelize your high and low use periods of energy.

Middle age is a time when people would do anything in the world to cure what ails them — except give up what is causing it.

The electric water heater load management program and the high pressure sodium security light reflect ways in which cooperative members may reduce their energy bill. There are no hidden gimmicks and no cost is involved to the member in changing the security light or in installing the control on the water heater. A brief explanation on each of the above programs appears elsewhere in this center section. It is anticipated that the load management of the domestic water heater would normally occur during a maximum of four (4) hours during the period of 3 p.m. to 9 p.m.

The installation of the control device on the electric water heaters began about August 1. The control is being installed by qualified electricians and they will be making their own appointment with the cooperative members to install the device.

The Cooperative would certainly appreciate the cooperation of all members in keeping the area around the meter, whether it be located on a pole or on a residence, free and clear of weeds and debris. Several meters are located in pastures, around grain bins,

fence rows and other unique locations. In addition, the cooperative has received reports of access to meters being blocked by junk, wagons and vehicles, which delays and/or makes impossible the job of reading meters in a timely fashion each month. Also, should an outage occur it also impedes the work of the cooperative linemen in restoring service. Your cooperation in assuring us that access to cooperative facilities is free and clear will certainly be appreciated.

### ELECTRIC WATER HEATER

The electric water heater program wherein the cooperative will pay \$150 toward the placement of a new 40-gallon or larger electric hot water heater in a residence in the cooperative service area still exists and will continue through December 31, 1986. Members are cautioned, however, to be certain to purchase a 40-gallon or larger electric water heater which meets the ASHRAE 90 standards. The rebate provision does not apply for water heaters that do not meet ASHRAE 90 standards.

To be eligible for the special offer the member needs to supply the cooperative with the proper sales information and dealer's receipt which should indicate the size, type, brand, model and certification that the water heater meets the above standards.

## OFFICE CLOSING

**The Cooperative office will be closed on Monday, September 1, 1986, in observance of Labor day.**

# Electric heating equipment survey

TO: Members of Menard Electric Cooperative

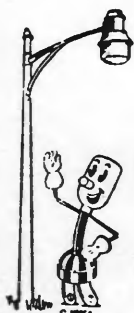
If your home is heated electrically, please complete and return the following coupon at your earliest convenience. Your assistance in providing the requested information will be of substantial value as we attempt to provide you with affordable electric rates.

THE MAJOR HEATING SOURCE IN MY HOME IS ELECTRICITY. I have:

- Electric Baseboard                       Electric Furnace  
 Ceiling Cable                               Air-to-Air Heat Pump  
 Closed-Loop Heat Pump

Name \_\_\_\_\_ Address \_\_\_\_\_

Account No. \_\_\_\_\_ Phone No. \_\_\_\_\_



## Security lighting

Your cooperative has the high-pressure sodium (HPS) security light available, in addition to the mercury vapor security light which has been popular for many years.

Recent studies by your cooperative indicate that the HPS light creates less KW demand and uses fewer kilowatt-hours in comparison to the mercury vapor light.

HPS lights are available for \$5.25 per month and the mercury lights are \$7 per month.

If you would like a security light installed, or if you wish to replace an existing mercury light with a HPS light, please complete the information requested below.

- I would like to have a security light installed.  
 I would like to change the mercury vapor security light to a HPS security light.

\_\_\_\_\_  
Signature of Member

\_\_\_\_\_  
Address

\_\_\_\_\_  
Member's Account No.

(    ) \_\_\_\_\_  
Member's Phone No.

## Water heaters

The cooperative load management program is being implemented with the intent and purpose of reducing the KW demand during the months of January, February, July, August and December. A control device on the water heater circuit will allow the water heater to be shut off for periods of no longer than four (4) hours. Members with a control device on the water heater circuit will be allowed a reduction on their energy bill of 3 cents per kilowatt-hour in the rate use block of 600 to 1,000 kilowatt-hours per month, with a maximum monthly credit of \$12. If you are interested in participating in the electric water heater load management program, please complete the information requested and return this coupon to the cooperative.

Please place my name on the waiting list to have a control device installed on my electric water heater. I understand if I later request the removal of the same, the cooperative will disconnect the control device and any monthly credit allowed me will cease at that time.

\_\_\_\_\_  
Date

\_\_\_\_\_  
Signature of Member

\_\_\_\_\_  
Address

\_\_\_\_\_  
Member's Account No.

(    ) \_\_\_\_\_  
Member's Phone No.

Experts Report... Once Established... Water Just Once A Week... Be Absolutely Amazed As All Growing Season Long—Week In, Week Out... Compared To Even The Majestic Black Spruce... **WONDER SHADE TREE...**

# ZOOMS TO THE SIZE OF A 15 YEAR OLD TREE IN JUST ONE SINGLE YEAR!

**YES, ROOF-HIGH IN JUST ONE YEAR!**

and keeps on skyrocketing 30-40-50 EVEN UP TO 60 FEET HIGH OR MORE in less time than most trees nudge themselves a few feet off the ground.

IT'S ALMOST LIKE GROWING INSTANT SHADE

**Actually Soars Into A Magnificent Tree IN JUST ONE YEAR!**

Yes! Based on amazing growth rates reported by plant scientists—it grows SO FAST... arches out SO WIDE... you can actually take a ruler and measure the incredible difference in height every 2 to 3 days! OR, to really leave your neighbors gasping in awe and wonder, give them a yardstick and let them measure the difference IN FEET every 2 to 3 weeks!

Yes, goes on to thrust itself so high, so fast that it actually towers over even a Japanese Red Maple, Cherry Tree or even the most graceful silky willow in such a ridiculously short time you will simply refuse to believe your eyes! Think of it!

**GROWS MORE IN JUST ONE MONTH THAN MOST TREES GROW IN AN ENTIRE YEAR!**

Because according to plant experts, Govt. scientists and Botanical Gardens who researched this wonder-hybrid... once established, you merely water it once-a-week, and be absolutely floored as, during its SUPER-SOARING growing season, it GROWS AS MUCH AS A FULL 1/2-FOOT WEEKLY AFTER EVERY TIME YOU WATER IT!

That's right! Grows higher than even a full grown Flowering Dogwood IN JUST ONE SINGLE SEASON! Grows higher than even a full-grown Star Magnolia IN JUST ONE SINGLE YEAR!

**PLANT NOW—REACH OUT AND TOUCH ITS LUSH, THICK BRANCHES FROM YOUR SECOND STORY BEDROOM WINDOW BY THE NEXT SUMMER!**

No doubt about it. There's just not another "instant" Shade Tree like it on this planet! Because thanks to this miracle of plant science, instead of spending a small fortune on a tree and then waiting half a lifetime for it to grow... get set for the garden-wonder of your life as this super-soaring hybrid rockets forth from a prize nursery-grown plant to a tower of roof-high beauty in less time than you ever dreamed possible.

**GROWS IN VIRTUALLY ANY SOIL—REQUIRES NO SPECIAL CARE—SOARS INTO A MASTERPIECE OF BEAUTY IN JUST A MATTER OF MONTHS!**

Best of all, unlike most trees that demand constant care, constant pampering... about the only thing you do after you plant this super-growing wonder-hybrid is water it and enjoy it! That's why leading botanical gardens... landscape artists... garden editors... can't stop raving about its indescribable beauty... its trouble-free care... its surging, towering growth.

Small wonder that leading experts hail it in the most glowing terms... recommended it again and again for homeowners who want a stunning display of beauty... both a wind and privacy screen and deep, cool shade... and with practically no more work than a thorough watering each week!

**VITAL STATISTICS FROM LEADING EXPERTS**

**MATURE GROWTH SIZE:** as much as 40 to 65 feet

**MATURE SPREAD:** as much as 30 to 35 feet

**ZONE OF HARDINESS:** Hardy from the deepest South to as far North as Vermont, Minn., Quebec, British Columbia. Winter Hardy in areas where temp. drops as low as 30 degrees below zero.

**LIGHT NEEDS:** Grows beautifully in Sunny location.

**DECORATIVE MERITS:** Highly recommended by landscape architects as beautiful decorative specimens for homes, parks, highways, etc., where exceptional fast growth and beauty are required. Perfect for fast screening and privacy.

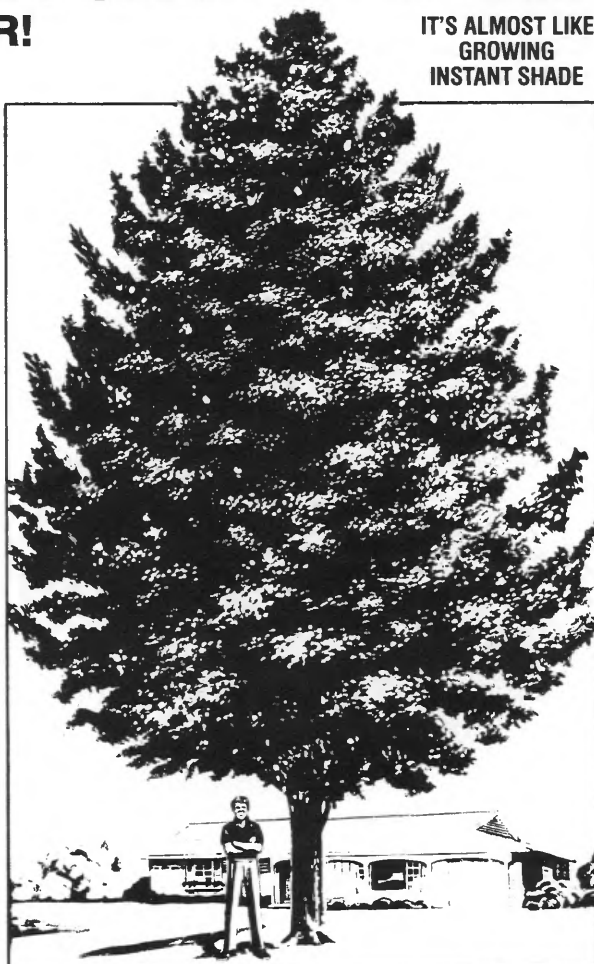
**RAPID RATE OF GROWTH:** Experts report growth rates on specimen trees that measure up to 8 FEET THE VERY FIRST YEAR ALONE. That's more than most shade trees grow in 3... 4... 5... even 7 years. Yes, once established will grow ranch-house-roof high IN JUST ONE SINGLE YEAR, that's right—The very next year after planting! Experts also report it soars an amazing 5 to 8 feet each year for YEARS thereafter. Naturally results are based on optimum growing conditions. Takes but 10 minutes to plant and normal care rewards you with a lifetime of beauty starting this very year.

**CARE:** Nothing special—just normal garden care. Water fully once weekly. Naturally resistant to most diseases, pests or insects.

**WE HAVE AT THIS MOMENT ONLY A LIMITED SUPPLY AVAILABLE FOR RELEASE TO THE PUBLIC—FULL SUPPLY WON'T BE READY UNTIL 1987 SO ACT NOW!**

Now the price of this super growing shade tree is not \$20 or \$30 as you might expect, but a mere \$3.95!

That's right, only \$3.95 for this magnificent Beauty that rewards you with such a glorious display of growth IN JUST ONE SINGLE YEAR. However, our supply is limited! Full supplies from the growing fields will not be ready until late 1986 or early 1987. Therefore, all orders must be shipped on a first-come, first-shipped basis. To make sure you don't miss out... ACT NOW!



Grows More in One Month Than Most Other Shade Trees Grow in An Entire Year—More in One Season Than Ordinary Shade Trees Grow in 2 Years, 3 Years or Even 5 Years! (Illustration shows magnificent size, spread and beauty of mature Populus hybrid-fam. Salicaceae.)

**SATISFACTION GUARANTEED OR MONEY BACK!**

Remember: Satisfaction is fully guaranteed. You must be thrilled in every way with this spectacular f-a-s-t growing shade tree or RETURN AT ANYTIME within 90 days for a full refund of purchase price... ANYTIME within 1 year for free replacement. Could anything be fairer? Now is the time to order and replant—so send no-risk coupon today!

© 1986, Spring River Nurseries, Inc., Spring River Road, Hartford, Michigan 49057

**MAIL NO-RISK COUPON TODAY**

Spring River Nurseries, Dept. IRE-886  
Spring River Road, Hartford, Michigan 49057

Yes, please send me for proper planting time in my area the SUPER GROWING HYBRID(S) indicated below:

- (#001) 1 for only \$3.95 plus 75¢ postage and handling.
- (#002) 2 for only \$6.95 (SAVE OVER \$1) plus \$1.00 postage and handling.
- (#004) 4 for only \$10.00 (SAVE OVER \$7.00) plus \$1.50 postage and handling.
- (#010) 10 for only \$20.00 (SAVE OVER \$20.00) plus \$3.00 postage and handling.
- (#020) 20 for only \$30.00 (SAVE OVER \$55.00) plus \$5.00 postage and handling.

If after receiving my order I am not fully delighted, I may return anytime within 90 days and you will refund my purchase price in full (less postage and handling, of course).

Total amount enclosed \$\_\_\_\_\_ (Mich. residents add sales tax.) No C.O.D.'s please.

Name \_\_\_\_\_  
Address \_\_\_\_\_  
City \_\_\_\_\_ State \_\_\_\_\_ Zip \_\_\_\_\_

**JUST MINUTES TO PLANT—REWARDS YOU WITH A LIFETIME OF BEAUTY!**



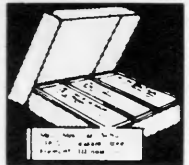
Here's a luxurious sight you don't have to wait half a lifetime growing—a matched pair of these towering show-pieces.

Picture your patio bathed in the cool beauty of this show-stopping miracle tree from early spring to the first snows of winter.

Just a few minutes planting time—a few seasons' growing time, rewards you with twin towers of beauty.



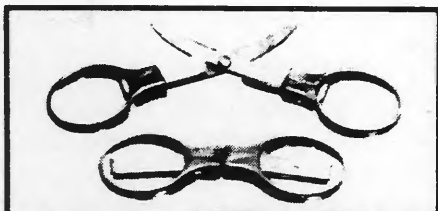
# 1000 GOLD STRIPE ZIP CODE LABELS 75¢



**FREE LOVELY GIFT BOX**  
1000 Gold Stripe, 2 Color, gummed, padded Labels, printed with ANY name, address & Zip Code, 75¢ + 10¢ pstg & hdg., or 85¢ in all Or. 3 sets, all the same or each set different, only \$2.40 ppd Fund raisers write for quantity prices

Money Back Guarantee. FREE GIFT BOX! Pls allow up to 6 wks for delivery.

**LABEL CENTER Dept. GS-536**  
1602 Locust St. St. Louis, Mo. 63103



**DELUXE FOLDING SCISSORS 79¢**

An open & shut case of convenience. Quality steel blades, cushioned plastic handles. ingeniously engineered to fold to absolutely safe 3" size to slip easily into pocket, purse, sewing kit, first aid kit, glove compartment, tackle box etc. Great for in-store coupon clipping. Vinyl case included. A great value at only 79¢ Pr. 2 Pr. \$1.50 6 Pr. \$4.25 1 Dz \$7.95 ppd. Fund Raisers write for quantity prices. Money-back guarantee. Pls allow up to 6 weeks for delivery.

**TWO BROTHERS, INC. Dept. FS-692**  
1602 Locust St. St. Louis, MO 63103

## Dentures

# \$195

Total Cost For Both  
Upper & Lower Dentures  
**ONE DAY SERVICE**

Not Licensed in the State of Missouri  
As a Prosthodontist

## General Dentistry

with  
**Complete Dental Service  
plus Ozark Hospitality**

Single Porcelain Crown \$150  
3 Unit Porcelain Bridge \$405

1st tooth extraction \$15  
Each thereafter \$10

**WE WANT YOU SATISFIED!**

We also process Insurance Forms  
free hookup for your  
recreational vehicle

Please call for an appointment or  
**WRITE FOR FREE DETAILS**

**Frederick C. Lauer DDS**  
**Mid-America**  
**Dental Clinic**

(417) 466-7196

Hayward Drive Rt. 3, Box 19C  
Mt. Vernon, Mo. 65712

**1-800-843-9348**

**1-800-422-5113**

In Missouri

## Rescue Your Dying Septic System NOW!

Just Pour Safe, Easy To Use Powder Into Your Commode and Finally...

# END SEPTIC TANK BACKUP CLOGGING and SMELL

**RESULTS VISIBLE  
OVERNIGHT!**

**WHY SEPTIC TANKS BACK UP** Septic tanks Clog, Backup and Smell because of household cleaners, which are great for dishes, laundry and floors, but kill good bacteria in your tank and cesspool that normally digest solid wastes, fats, greases and starches. Without this bacterial action solid waste builds up in your system. They overflow into and clog your drainfields, lines and back up into your tank, causing overflows and smells. Even pumping your tank will not clean out the pipes or drainfields, but **SEPTIPRO®** will!

**HOW SEPTIPRO® WORKS TO SAVE YOUR DYING SYSTEM!** It goes to work immediately with 3 Safe Potent Enzymes and Bacteria supplement that works with your good bacteria to break down and digest fats, greases, starches, and all organic waste materials including paper and cotton fibers. It converts and liquifies all organic solid wastes. Cleans tank, pipes, and drainfields. Drainfields become porous allowing earth to absorb. The entire system opens and works from beginning to end.

**SEPTIPRO® SAVES YOU MONEY!** No more costly mechanical cleaning, digging or pumping.

**SAFE AND EASY TO USE!** Just pour **SEPTIPRO®** into your commode, let it work! Results usually visible overnight! Non-toxic, Poisonous or Corrosive. Harmless to Humans, Animals or Plumbing. Will make your system odor-free. **SEPTIPRO® IS GUARANTEED TO KEEP YOUR SEPTIC SYSTEM TROUBLE FREE OR WE WILL REFUND EVERY PENNY YOU PAID FOR YOUR SEPTIPRO®**. 1 lb. for initial treatment of 1000 gal. tank or 4 routine monthly 4 oz. treatments.

I understand that SEPTIPRO® is fully guaranteed and if it does not do as claimed, I can return the unused portion within 30 days and get all of my money back.

**YOU DON'T RISK A PENNY!  
Order Now! Money Back Guaranteed!**



SOLID WASTE CLOGS PIPES, TANK & DRAINFIELD



SOLIDS DIGESTED AND LIQUIFIED NOW ABSORBED IN OPENED DRAINFIELDS

**SEPTIPRO® • P.O. Box 32 • Kasson, MN 55944**

- 1 lb. @ \$8.95 plus \$1.00 postage & handling total \$9.95
- 2 lbs. @ \$14.40 plus \$2.00 P & H total \$16.40 Save on
- 4 lbs. @ \$21.30 plus \$2.50 P & H total \$23.80 Larger
- 8 lbs. @ \$36.50 plus \$3.00 P & H total \$39.50 Sizes

Charge to my  Master Card  Visa

Account No. (All digits) \_\_\_\_\_

Expiration Date \_\_\_\_-\_\_\_\_

Signature \_\_\_\_\_

Street \_\_\_\_\_

City \_\_\_\_\_ State \_\_\_\_\_ Zip \_\_\_\_\_

Charge Customers call: 1-800-533-2225

# Nashville North

Proudly Presents

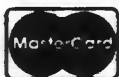
For Your Listening and Viewing Pleasure

## LIVE IN CONCERT

- |  |  |
|--|--|
| Sept. 20 - <b>Gene Watson</b>                                  | Nov. 8 - <b>Charley Pride</b>                      |
| (Portion of proceeds to Taylorville Volunteer Fire Department) | Nov. 15 - <b>Charly McClain &amp; Wayne Massey</b> |
| Sept. 27 - <b>Bellamy Brothers</b>                             | Nov. 22 - <b>Roy Orbison</b>                       |
|  | Nov. 23 - <b>The Hinsons</b><br>(Gospel) 3:30 p.m. |
| Oct. 4 - <b>Mel Tillis</b>                                     | Nov. 29 - <b>Brenda Lee</b>                        |
| Oct. 11 - <b>Boxcar Willie</b>                                 |  |
| Oct. 18 - <b>Donny &amp; Marie Osmond</b>                      | Dec. 5 - <b>Eddie Rabbitt</b>                      |
| Oct. 25 - <b>Roy Clark</b>                                     | Dec. 31 - <b>Bill Anderson</b><br>9:00 p.m.        |
| Oct. 31 - <b>John Schneider</b>                                | New Years Eve                                      |

ALL SHOWS 6:30 & 9:30 UNLESS NOTED OTHERWISE

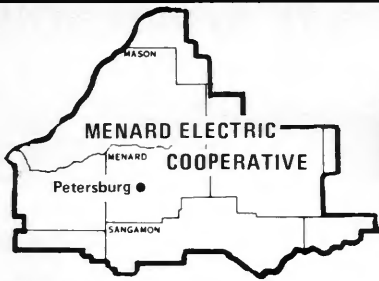
Reservations Are Welcome . . . CALL TODAY!



**NASHVILLE NORTH**  
217-824-2433



RT 104 & 29 • Taylorville, IL 62568



# Menard Electric News

MENARD ELECTRIC COOPERATIVE 217-632-7746 PETERSBURG, ILLINOIS 62675

## Co-op Comments

Ronald W. Ingram of rural Athens completed 10 years of service with your Cooperative on September 13, 1986. Ron is meter technician and staking engineer for your Cooperative.

Mr. and Mrs. Roy I. McDaniel of Mason City will celebrate their 40th

wedding anniversary September 21. Roy was a long-time area serviceman in the Mason City area and a journeyman lineman for your Cooperative. He retired on March 1, 1977 with nearly 32 years of service.

Mr. and Mrs. Carroll Cline of rural Pleasant Plains will celebrate their 40th wedding anniversary October 1. Mr. Cline was elected a director of

District No. 1 for your Cooperative at the annual meeting held in June of this year.

Mr. and Mrs. Dwaine E. Heyen of Petersburg are the proud parents of a son, Eric James, who was born August 24. Eric is their first child and the Heyens will celebrate their fifth wedding anniversary October 3.

# The earth as a heat source

The earth is the largest most efficient solar collector available. The temperature of the ground remains about 50 degrees throughout the year. Although this temperature is not warm enough in itself to heat a home, there is a tremendous amount of heat available from this source. The only thing needed is a dependable way to move the heat from this collector and deliver it to the home in a usable form.

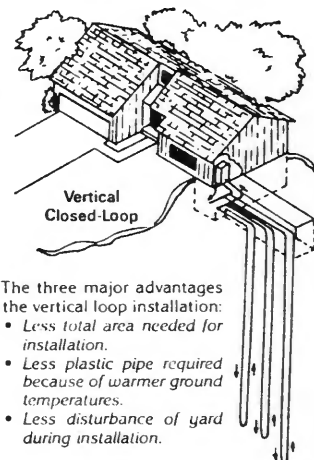
The groundwater heat pump is such a system. This system circulates water through the ground picking up the BTUs. It then takes these BTUs to a compressor where they are removed from the water and delivered to the home at a temperature of about 110 degrees. Since this heat is already present the only cost is for moving and removing the BTUs. This cost is a small amount compared to the cost of producing heat. In fact, this system will produce three and one-half to four times the heat, per unit of cost. The removal of the BTUs is done by a heat pump. It moves the BTUs from inside the refrigerator to the outside. If you feel the coils in the back of the refrigerator you will find that the heat given off is much warmer than the inside of the refrigerator.

The installation of the groundwater heat pump is relatively simple. The inside unit which consists of the compressor, the water-to-air exchanger and the blower unit takes up no more room than other systems. The rest is installed outside, under ground. The ground loop can either be trenched or installed in uncased wells 100 to 150 feet deep.

The next question, of course, is installation costs. This system, unlike other energy saving systems, will actually pay for itself. The average pay-

back is four to six years. This makes for a very realistic system, as the life expectancy is 19 to 20 years.

An important consideration when considering any heating system, is what price fluctuations will do to the operating costs in the future compared with other fuels. The savings are so substantial with the groundwater heat pump that the operating cost of the groundwater heat pump will remain under the operating cost of other heating systems, even with a large increase in fuel cost.



- The three major advantages of the vertical loop installation:
- Less total area needed for installation.
  - Less plastic pipe required because of warmer ground temperatures.
  - Less disturbance of yard during installation.

# Resume of August board meeting

NOTE: This new feature will appear monthly in Menard Electric's section of the Illinois Rural Electric News. The board, at their August meeting, passed a resolution that the synopsis of the monthly board meetings be published the following month in the co-op's REN center section.

The cooperative board met an hour early on Monday, August 25 to hear a presentation by Gordon Olsen, of the Association of Illinois Electric Cooperatives, on the recent market survey that had been completed in Illinois for the Illinois electric cooperatives. The cooperative's staff also attended this presentation.

The regular board meeting began shortly after 8 p.m., with the standard roll call and passing on the minutes of the previous board meeting.

Manager Dorland Smith presented the monthly operating report for the month of July. He commented that kilowatt-hour purchases and sales were up because of the extremely warm weather for July, however, the income and expenses were close to the budget figures for the month. Margins for the first seven months of 1986 were very close to the revised budget amount. The board in reviewing the reports requested a graph be developed to show "line loss" on a 12 month average, so as to present a better picture than we see with only the figures. Manager Smith also commented on the outage summary for the month of July, stating that the number of outages was about twice what we incur in a normal year, due to the extreme number of lightning storms the cooperative experienced in its territory during the month of July. The safety report for July indicated one recordable accident, an employee getting a foreign substance in his eye, however, no lost time was attributable to this accident. Manager Smith also noted the Cooperative had experienced no lost time accidents for the first seven months of 1986. The manager also reported on meetings that occurred during the month with several of the members in regard to large power service. He also requested permission to

attend REA's 1986 New Manager's Conference to be held in Washington in October. The board granted permission for Manger Smith to attend same.

The board took under consideration approval of the union contract for the year 1986-87 as negotiated by the labor committee and the union. The contract was accepted.

The board discussed attendance at a board meeting by members and it was decided that the current policy would be adhered to, however, a synopsis of the board meeting would be printed in the cooperative's newsletter.

Manager Smith also reported to the board on the formation of a new cooperative, "The National Rural Telecommunications Cooperative," formed by NRECA and CFC. This cooperative is to be involved with satellite communications, both for the cooperative and the television industry. The board authorized the study of this cooperative, its possibilities and implications with Menard Electric and to report back to the board at a future date.

President Bell, as the Association of Illinois Electric Cooperative's director, reported on the AIEC activities for the month of July and also on the recent

AIEC annual meeting held in Springfield.

Robert Zook, director on the WIPCO board, reported on the WIPCO activities for the month and also on the status of the refinancing of the long-term debt based on the legislation recently passed in Washington.

Also acted on at the board meeting was approval of agreements for electric service, approval of the membership applications for the month of July and the approval of the inventory of work orders for June, 1986. The board also approved the payment of bills for the month of July.

In other business, the board discussed the auditor for auditing the cooperative books for 1986 and it was decided that the manager should contact a number of auditing firms for a quotation and this be brought back to the board at the September meeting for decision as to the auditor.

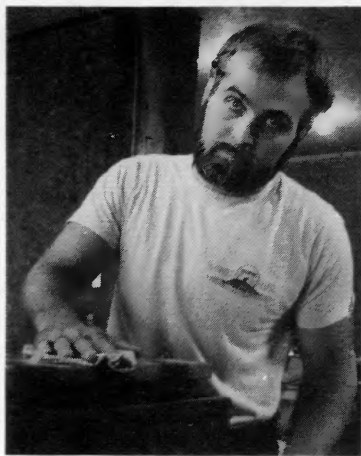
The announcement was made that the National Rural Electric Cooperative Association annual meeting will be held in Dallas, Texas during the first week in February, 1987. Also the board adopted a policy for employees donating blood on cooperative time.

## Be careful when cutting winter wood

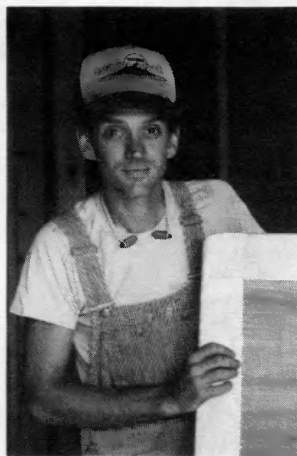
Please ... when you are cutting trees for firewood this winter, use extreme caution around power lines. If a tree falls on a line, you and your neighbors could be without electricity for several hours or more. But even more important, there's a lot of current going through those lines. Coming in contact with it can be fatal.

There are old tree cutters and careless tree cutters, but there are no old, careless tree cutters.





Ben Kruger



Chris Cassidy

# Quality woodwork

**“I learned that I enjoyed woodworking more than I liked building houses.”**

The people at Beaver Creek Woodworks are working today, building tomorrow's heirlooms. Ben Kruger, Chris Cassidy and Becky Meyer work with top-quality hardwoods to build carefully crafted woodworks designed from the ground up to be pleasing to the eye, functional and to last for many decades.

Their shop, which is served by Adams Electrical Co-Operative, is on Highway 96, just south of Quincy.

“We try to use the old-fashioned joinery methods,” Chris says, “where the pieces we make are held together by good joints, rather than simple butt joints and nails or screws. They're kind of like Chinese locking puzzles in that you have to work at it, sometimes, to find out how to disassemble them.”

In some of today's furniture factories, butt joints, nails, screws and sometimes staples are used to speed the mass production process and help keep costs down. The same process also makes for furniture items that will never make it to antiquity, the partners say. To them, an antique is not just something old, but a work of art that has aged.

“Nails gradually work themselves out,” Chris says, “and you can bet that a piece put together at the turn

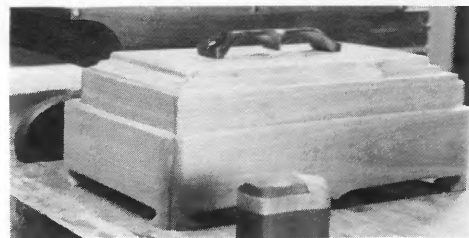
of the century with nails or screws has either been rebuilt or needs to be. This is especially true of chairs, tables and furniture people use a lot.”

Ben, who dreamed up the idea of the shop, got into quality woodworking in a backhanded sort of way. Trained at the University of Illinois in home design and construction, he ran across a friend who knew woodworking and wanted to learn some of the finer points of home building. The friends agreed to swap skills. “I learned that I enjoyed woodworking more than I liked building houses,” says Ben, who has a tad of poetry and a shovelful of artistry in him. “I like the Louis Nizer quote,” he says, “that goes like this: ‘A laborer works with his hands. A craftsman works with his hands and mind, and an artist works with his hands, his mind and his heart’.”

Chris, who had held a series of repair and add-on jobs for area contractors, was talking with Ben, who had come up with the idea of a quality woodworking shop sometime before. “It seemed like a good thing,” he says, “and I wasn't doing anything else really interesting, so I decided to get in on the venture.”

Both are still working to improve their skills, by reading books and magazine articles in trade publications, and by trying new ideas in the shop.

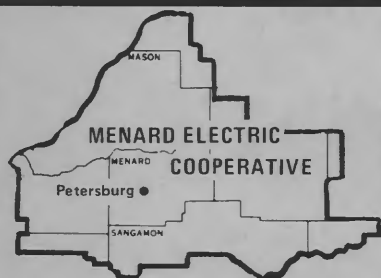
“It's extremely important in quality woodwork to preserve the integrity of the grain,” Ben emphasizes,



A carefully crafted jewelry box awaits the final touches before going out to a buyer.

“along with using careful joinery techniques.”

“I'll only be able to produce so many pieces in my lifetime,” he adds, “and I want to remember and savor the challenges presented by each one.”



# Menard Electric News

MENARD ELECTRIC COOPERATIVE 217-632-7746 PETERSBURG, ILLINOIS 62675

## Co-op Comments

If you haven't checked the air filters of your forced-air heating system recently, now would be a good time to check, clean or replace them.

The "good old days" were when we hoped things would be better soon.

Mr. and Mrs. Howard W. Montgomery of rural Petersburg will celebrate their 50th wedding anniversary on November 7, 1986. Mr. Montgomery was a director of your Cooperative from February 24, 1962, to June 14, 1986.

On September 9, 1936, the Certificate of Incorporation of Menard Electric Cooperative was granted. On September 12, 1936 the first loan from REA was approved.

Your Cooperative requests all members to please make sure that all electric meters are readily accessible to contractual meter readers, as well as Cooperative personnel. We expect accurate and timely meter readings and only a short time is needed to secure the same except when access to Cooperative meters has been blocked or is made difficult due to weeds, shrubs, dogs, trash and other debris.

Under the Cooperative policy, authorized representatives of the Coopera-

tive shall have the right of access to the premises of the members at all reasonable times for the purpose of reading, testing or inspection of meters, connecting or disconnecting service, inspection of wiring and apparatus, and making repairs on lines or right-of-ways. Unreasonable deterrence to access of Cooperative facilities shall cause the service to be subject to disconnection.

Your cooperation in allowing uninterrupted access to Cooperative facilities and electric meters will enable your contractual meter reader and Cooperative employees to do their job with a minimum amount of time and expense. Thank you for your cooperation.

## Capital credits allocation for 1985

Any income left over at the close of a fiscal year (after all expenses have been paid from the revenue received) is "margins." In the case of an investor-owned utility the margin goes to the stockholders or investors. In the case of member-owned and non-profit Cooperatives, such as Menard Electric, the margin is credited to you, the member-owner, on a pro rata share basis, based on the amount you paid for electric service during that year.

As an example, if you paid \$1,000 for

electricity during 1985 (tax not to be included) and multiplied that times the capital credit factor of .05281335 (\$1,000 x .05281335% = \$52.81) \$52.81 would be assigned to your account as capital credits for year 1985.

In the spring of 1986, the Cooperative members were notified individually as to the capital credits which had been assigned to them for the year 1984, as well as the total for prior years.

Like other utilities the Cooperative must borrow and raise capital to finance

construction and operation of the total electric system. In this way, the Cooperative members are furnishing capital and have an equity in the Cooperative. This is why we call the assignment of each year's margins "capital credits." While Menard Electric has not retired any capital credits during the past 50 years, it is anticipated that when member equity reaches 40 percent a plan for retirement of capital credits might be implemented.

## Water beds

Many people are not aware of the cost of operating a water bed. A water bed is basically a water heater, due to the fact the heating pad lies under a water-filled mattress to bring the temperature up to a comfortable degree. The average size of heaters in a water bed is between 250 and 400 watts, according to the size of the bed.

Many high usage complaints have been traced to a newly purchased water bed which uses 200 to 300 kilowatt-hours per month. There are several things that will determine what the amount of increase will be: (1) how warm you prefer the bed to be, (2) the temperature of the room in which the bed is located, and (3) whether the bed is protected with insulation. The third item mentioned above is one that most people never

think of doing. Insulation board such as one-half-inch polyurethane is the best material to use. Generally, it will easily fit between the mattress and the bed frame and will change the height of the bed very little. You must also remember to keep the mattress covered completely with warm bed coverings at all times to help retain the heat in the water. The less heat loss from the mattress the less it will cost to operate.

# Notes from September 22 board of directors meeting

The Cooperative board met on Monday evening, September 22 for its regular monthly board meeting. Upon roll call, directors Davis, Lepper and Worner were absent. Also attending the meeting were former director Howard W. Montgomery and manager Smith.

President Bell called the meeting to order at 8 p.m. and the agenda was approved as mailed. The motion was made to dispense with reading of the minutes and for them to be approved as they were mailed to each director with the notice of the meeting.

First order of business; manager Dorland Smith presented to retired director Howard W. Montgomery a certificate denoting his completion of the directors' courses provided by NRECA. This certificate would have been presented to Howard at the Region V Meeting in Madison, Wisconsin earlier this month. However, Howard was not in attendance and it was presented to manager Smith in his absence to be presented to Mr. Montgomery at this time.

Manager Smith presented the monthly operating reports for the month of August. Comments on the operating report included that the operating revenues were slightly higher than budgeted for the month. This was due to the fact that some kilowatt-hour sales from the preceding month were showing up on this report due to the date of meter readings. Line loss is within the general averages for this time of year and delinquent accounts are also about normal.

On the outage summary manager Smith noted that outages for this month were about the same as this month one year ago, however, outage time for the year was extremely high due to the large number of storms that have been experienced during the month of July.

The safety report stated there were no lost time accidents for August.

Smith also commented on the load management and interruptible service and stated that with the irrigation loads that could be managed and the

two large services that have signed up for the interruptible service the Cooperative has saved approximately \$250,000 in power expense. Manager Smith also requested permission for several of the staff members and employees to attend some training workshops in the month of November.

Manager Smith read a letter to the board of directors from CFC stating CFC's position with line of credit, due to the fact that the Cooperative is currently deferring its equity funding payments to WIPCO. The board authorized manager Smith to answer this letter and at such time that a definite plan for paying the deferred equity funding has been established CFC will be advised.

The board then reviewed the quotations from various auditing firms to perform the auditing service for the Cooperative for the fiscal year 1986. Several auditing firms elected not to quote. Quoting were R. L. Quint of Mission, Kansas — \$3,800; Clifton, Gunderson & Company, Springfield, Illinois — \$6,000; and Bennett & Middendorf, Quincy, Illinois — \$8,000. The board after some discussion agreed to contract with R. L. Quint to be the auditors beginning with the fiscal year 1986 for the amount of \$3,800.

The board considered the joint sponsorship of the Continuing Education Program through the AIEC and approved participating again for the year 1987.

The board took under consideration the approval of the Labor Committee's report for non-union employees for the year 1986-87. The board approved the labor committee's recommendation for salaries for the year 1986-87. The board reviewed the contract of custodians, Julius and Myrtle Barbee, and this contract was approved for another year, based on the labor committee's recommendations.

Manager Smith then presented to the board a recommendation that the board put the spring/fall retail rates into effect a month early due to the fact that crop

drying had already begun due to an early harvest. Manager Smith reported that Southern Engineering Company had been contacted and they had estimated the maximum loss of revenues in changing this rate would be approximately \$45,000, however, this would be offset by increased sales in the use of crop dryers. The board approved the implementation of the spring/fall rate as requested by manager Smith.

The list of uncollectible accounts as presented for write-off were approved.

Director Zook reported on the WIPCO activities for the month and also informed the board of the status of refinancing and the status of the merger with Soyland.

The board approved agreements for electric service for Ed Carter and Gary Daum.

The inventory of work orders for the month of July, 1986 was approved.

The board also approved the membership applications for the month of August.

The board authorized the increased use of the center section of the Illinois Rural Electric News as requested by Special Services Coordinator Earl L. Pillsbury. The special section could be expanded to four pages at times he deems it necessary to have the additional space. Manager Smith requested the board authorize the monthly payments of accrued interest on the deferred equity. After some discussions the board approved the payment of the interest that was accruing on the deferred equity each month.

The board then discussed the class action suit that had been filed in Sangamon County earlier in the day. After some discussion it was decided that no action could be taken at this time as this was a complex issue and would have to be studied by our legal counsel and the other cooperatives that were involved and probably a special meeting would have to be called to take formal action.

Manager Smith called attention to the fact that there will be a District Meeting for the WIPCO cooperatives on Wednesday, October 1.



At left, David Behrens, left, talks with John Root as James Simpson, background, installs a control on Root's water heater.

## Money-saving program

As announced earlier the Cooperative has implemented a load management program with the intent and purpose of reducing the kw demand during the months of January, February, July, August and December. A control device on the water heater circuit will allow the water heater to be shut off for periods of no longer than four (4) hours per day during the above time.

Water heaters will not be controlled every day, however, it is impossible to determine the controllable days in advance. Members with a control

device on the water heater circuit will be allowed a reduction on their energy bill of three cents per kilowatt-hour in the rate use block of 600 to 1,000 kilowatt-hours per month with a maximum monthly credit of \$12.

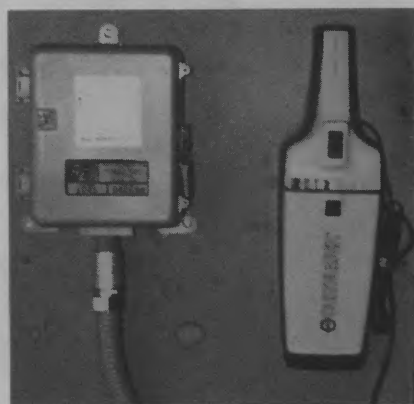
The accompanying photographs show a load-control device being installed at the home of John E. Root of rural Petersburg by James Simpson of Simpson Electric Service. "It takes about 45 minutes to put the control device on," Simpson said.

Simpson is installing the control devices in the southern half of the

Cooperative's service area and Fred Hodack is installing control devices in the northern portion of the service area.

There is no charge for the installation of the load management device and you may have the control removed if not entirely satisfied. If you would be interested in having a load control device installed on your electric water heater, please notify the Cooperative office and we will be happy to provide you with information on the load control device.

It is through people helping people that results are achieved. With innovative ideas like load management and the assistance of the member/owners of the Cooperative we will be better able to combat the cost of electricity.



The control unit in place.

## Now's the time for electric water heater

Have you ever smelled fumes in the vicinity of your water heater? How many times have you gotten down on your hands and knees trying to light a water heater only to see the flame keep going out? Has the flame ever flashed back in your face? Have you ever wished you could move your water heater, but couldn't because it had to be vented to carry the deadly fumes outside? Does the noise of a gas water heater burning or going off and on bother you?

An electric water heater is even safer than an electric light bulb because it is so well-insulated it doesn't radiate heat to the surrounding area. And because it is flameless there are none of the

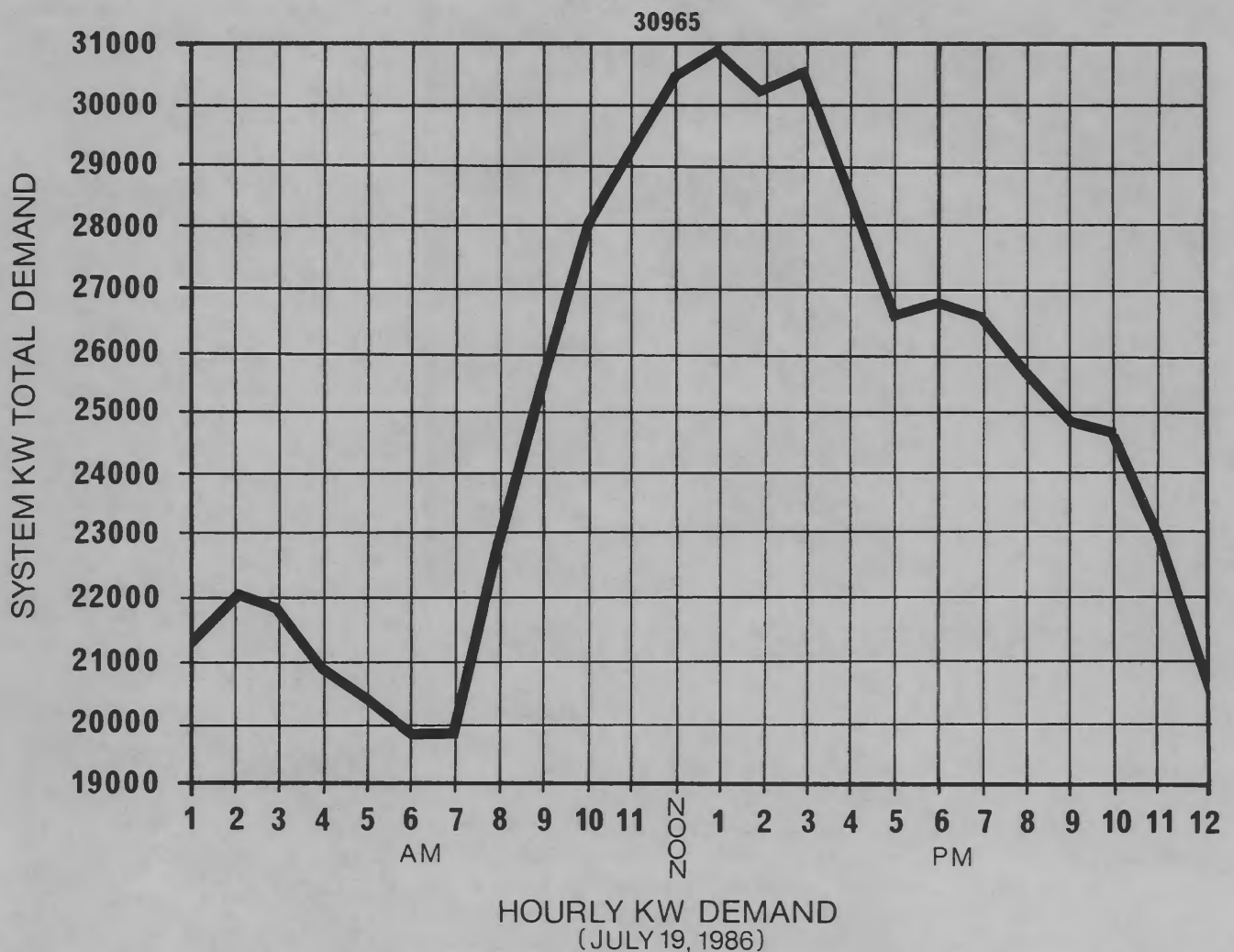
by-products of combustion, such as fumes, soot, grime or smoke. So it is not only safer, but cleaner.

The major portion of the heat in a flame-type water heater is wasted through stack loss. With the flame-type water heater the stack or flue is necessary to carry off fumes and severely limits where the heater can be located.

None of these problems exist with an electric water heater. A flue is not necessary, no hazardous flame is involved, and all the heat goes directly into the water with no stack loss. You can also locate an electric water heater almost anywhere in your home and it is

so quiet you never know it's there.

Your cooperative is offering a substantial rebate to Cooperative members who purchase and install an electric water heater which meets the ASHRAE 90 standards and is at least a 40-gallon capacity unit or larger. This special offer will expire on December 31, 1986. There are no hidden gimmicks with this offer and after a new electric water heater is installed in a residence on Cooperative service lines, Cooperative personnel will inspect the water heater to determine that it has been installed in an active account and the rebate of \$150 will be prepared for the Cooperative member and/or owner.



## High peak demand brings high prices

The term that is used more and more in utility communications is an item referred to as "peak" or "peak demand." To simplify this electrical terminology: It is when our members use the most electricity all at the same time. Substation meters measure this peak every 15 minutes and the usage is recorded as to when this occurs.

This peak is the highest demand recorded at a given time. It is this peak that the Cooperative is attempting to control. Nearly two-thirds of the Cooperative's monthly wholesale

power bill is based on peak demands.

The peak for 1986 to date occurred on July 19, 1986, at approximately 1 p.m. On July 19 (Saturday) the demand climbed from 7 a.m. until 1 p.m. and began falling around 3:00 in the afternoon.

Peaks occur each day, each week and each month. However, your Cooperative is concerned with the monthly peak that occurs during the summer months of July and August, and the winter peak which occurs during the months of December, January and

February. These five months of demand form the basis for Cooperative rates on an annual basis.

All Cooperative members participate collectively in determining the peak demand during the summer or winter. The Cooperative load management programs, such as irrigation control and electric hot water heater load management, are tools utilized by the Cooperative in an attempt to hold the demand to as low a level as possible.

**Office closing**  
**The Cooperative office will be closed**  
**on November 11, Veterans Day.**





# Menard Electric News

MENARD ELECTRIC COOPERATIVE 217-632-7746 PETERSBURG, ILLINOIS 62675

## Co-op Comments

In addition to having Thanksgiving and Veterans Day, November is also Good Nutrition Month, National Diabetes Month, National Epilepsy Month, National Stamp Collecting Month, and also includes Youth Appreciation Week and National Children's Book Week.

When selecting window or door glass for your home you should give strong consideration to high performance glass. This is a relatively new product which has special treatment. Some say it makes double-pane glass more effective in heat retention than triple-pane glass. This high performance glass is not to be confused with the various glass "films" which can sometimes be counter-effective.

Laughter is the shortest distance between two people.

If we could prevent our kids from making the same mistakes we did, we would deny them their education.



*Davis*

## Alvin Davis resigns as director

Alvin R. Davis of Beardstown submitted his resignation as director of District 3 on October 27, 1986.

Davis, a retired Fiat Allis superintendent, leaves the cooperative board after nearly 18 years of service. He and

his wife, Sue, have purchased a home in Winter Haven, Florida and plan to spend most of the winters there. Davis said, "It is unfair to members of the cooperative, to its board and to its employees for me to continue serving as a director when I will be spending part of my time out of state."

Davis was first appointed to the board of directors on December 1, 1968, upon the resignation of the late Audace Herzberger. In February 1971, Davis was elected vice president of the board of directors and served as such until March 10, 1973, at which time he was elected president. He served as president until June 12, 1982.

Davis maintained a high percentage attendance record at the cooperative's board meetings throughout his tenure. Having spent a lifetime in manufacturing and the business world, he brought a different perspective to cooperative problems.

On behalf of cooperative members everywhere, we extend our thanks for the many years of service and outstanding leadership which Alvin Davis provided. We wish him and his wife Godspeed as they enter into a new threshold of their life.

## HAPPY THANKSGIVING



In America, the gathering of the crop has been climaxed traditionally by prayers and a feast of Thanksgiving.

As this season's harvest draws to a close, let us pause and give thanks for the many fine blessings and everyday joys of our lives. The directors and employees of Menard Electric Cooperative wish you and yours a happy and pleasant Thanksgiving.

The Cooperative office will be closed on Thursday, November 27 and Friday, November 28th for the Thanksgiving holidays.

# Board meeting report

---

Menard Electric Cooperative's board of directors held two special board meetings in the month of October in addition to their regular monthly meeting.

The first special meeting was held on Monday, October 13, at 8 p.m. with all directors present. The purpose of this meeting was to authorize and execute documents in connection with the cooperative's recently approved loan, concurrent with the Rural Electrification Administration (REA) and the Cooperative Finance Corporation (CFC).

After the authorization and execution of the loan documents the board invited attorneys Tom Londrigan, Alfred Greening, Gordon Gates and Forrest Keeton to inform the board of the various positions of the plaintiffs and defendants in regard to the litigation in which Menard Electric has been named as a nominal defendant. After Londrigan presented the plaintiff's position and Keeton explained the cooperative's Litigation Committee position, these attorneys left and the board actively discussed this question. After considerable discussion, the board moved to adjourn the special meeting and call a special meeting for Friday, October 24.

---

A special meeting of the board of directors was called to order at 8 p.m., October 24 by president Morris Bell. All directors of the board were present. The agenda for this meeting consisted of consideration of action to be taken in response to the pending litigation in which Menard has been named a nominal defendant. Representative of the cooperative counsel, Jerry Tice, reviewed with the board the complaint and general comments that had been made at the previous special meeting on October 13.

After considerable discussion and deliberation, the board moved to instruct counsel to file an appearance in this particular case and to request an extension of time in which to further study and decide what further action the board should take in regard to this suit.

---

The regular monthly board meeting

was held in the cooperative offices on Monday, October 27, being called to order by president Bell at 7 p.m. All members of the cooperative board of directors were present. After approval of the agenda, the board listened to a personal request for line moving from cooperative member Carl Hintz. The board instructed the cooperative manager to research the necessary work that needs to be done and report back to the board at the November meeting. Minutes of the September 23, 1986, board meeting were approved as presented.

Manager Smith reviewed the monthly operating statement, balance sheet and budget. Margins were still running above the budget amount due as the cost of power was lower than had been predicted. Line loss is about average for a 12-month period and year-to-date, line loss is slightly over 9 percent. Other indicators are running very close to budgeted amounts. He also commented on the savings of converting the CFC loan from a fixed to a variable interest rate. He also commented on the outage report, stating that outages for the month of September were above average due to the number and severity of the storms that occurred in September. The safety report showed two minor reportable accidents during the month of September with no lost time.

Also attending the board meeting were Earl Pillsbury, Dave Crosnoe and Dave Diederich from the Association of Illinois Electric Cooperatives. Diederich presented a slide presentation in regard to telecommunications and the new National Rural Telecommunications Cooperative to the board. Crosnoe made note that Menard Electric could become a member of the National Rural Telecommunications Cooperative and be at the forefront of this new national activity. It was moved and carried that Menard Electric Cooperative become a member of the National Telecommunications Cooperative.

Director Dale Lepper commented on the annual meeting and asked for suggestions for dates, etc. The Annual Meeting Committee will meet in the next few weeks and recommendations

for the annual meeting will be given at the November board meeting.

Counsel representative, Charles K. Smith, presented a Co-generation Policy for board consideration. A motion was made to accept this policy and for it to become a part of the cooperative's policy manual. Motion carried.

Manager Smith recommended to the board an Economic Development Rate, to provide an incentive for new and/or expanding loads to develop in the cooperative territory. Rate incentives are available to Menard from Western Illinois Power Cooperative under their Economic Development Rate. A motion was made and carried to approve the rate "ED-1," Economic Development Rate, effective immediately.

Uncollectible accounts were presented and approval was made for writing off these accounts.

President Bell reported on the AIEC activities for the month of September.

Director Robert Zook and Manager Smith reported on the WIPCO activities. The Clinton nuclear plant has been fueled and is progressing toward operation of its low power license. Other activities in regard to refinancing, debt restructuring, and debt payment were also presented to the board.

The board approved an Agreement for Electric Service, the Inventory of Work Orders for August 1986 and the payments of bills for the month of September.

The membership applications for September were accepted as presented and director's special occasion vouchers were also approved.

Under other business, Director Alvin Davis from District 3 - Beardstown submitted his resignation from the board of directors effective with this meeting. The board of directors reluctantly accepted Davis' resignation with regret. Davis' leadership on the board will be sorely missed.

The time for the November board meeting was discussed and it was decided that the board will meet at 8:30 a.m. on Monday, November 24.

There being no further business, the meeting adjourned.

# Line construction nearing completion

Work should be completed by the end of December (weather permitting) on the construction of a three-phase line from Pinhook corner north of Petersburg south and westerly to Hazel Dell corner west of Petersburg. A total of seven miles of three-phase line is involved, approximately two miles of which is being converted from two- to three-phase.

This is to improve dependability, reliability of service and afford the cooperative the ability to feed between substations at Bonnett corner north of Petersburg to the Petersburg station near the Nance farm.

We appreciate the cooperation of the members who live in the area north and west of Petersburg and apologize for any inconvenience which they have been subjected to as this new line has been constructed.

The new line has been constructed

entirely with cooperative employees and no outside contractor has been involved.

Mother Nature will soon be descending upon central Illinois. Freezing rain, snow and strong winds will greet us soon. A severe storm can interrupt the electricity serving your home which we require for life support.

We ask your patience when storms cause outages and ask that you take the necessary safety precautions.

Should your lights go out, first check to see if your neighbors' lights are out also. Check your fuses or breakers in your switch box panel. If everything is all right at your service, then call your cooperative. Please give your *account number, name and phone number*. This will help your cooperative's emergency work crews determine the extent of the outage

and aid in speeding repair service. If your cooperative's telephone line is busy, hang up and try again. Please be assured the phone is not off the hook. Chances are your neighbors are trying to call the cooperative office also. During normal working hours (8 a.m. to 4:30 p.m., Monday through Friday) the cooperative office number is (217) 632-7746. If an outage occurs after 4:30 p.m. and before 8 a.m. or occurs on a weekend or holiday, please call the answering service number (217) 632-2311.

It is our hope that outages will be held to the extreme minimum during the winter months. Please be assured that your cooperative employees have but one goal and that is to provide you with the best reliability of electric service at as low a cost as possible.

# Co-op considering electric heat incentives

Your cooperative is studying several load management and/or marketing programs to offer to the membership. The goal of these programs is to reduce the peak kilowatt demands and at the same time maintain or increase the kilowatt-hours being used. Some of these programs are already in place.

The fixed cost of your cooperative's wholesale power billing is based on the kilowatt demands. When the kilowatt demands are reduced, the fixed cost will be lower. If the kilowatt-hours used are increased at the same time kilowatt demands are lowered, the cost per kilowatt-hour is reduced.

We are currently studying an electric heating incentive. However, before a program can be finalized, your help is needed. We need to know where the electric heating installations are and if the electric heat is being used.

If you have not provided the cooperative with information about your electric heating system, please complete the survey form on the right to provide us with the information we are seeking. With your help we hope to have a program in place by the end of 1986.

## Electric heating survey

I have whole house, permanently installed electric heat.

The electric heat installed is:  
(Check those applicable)

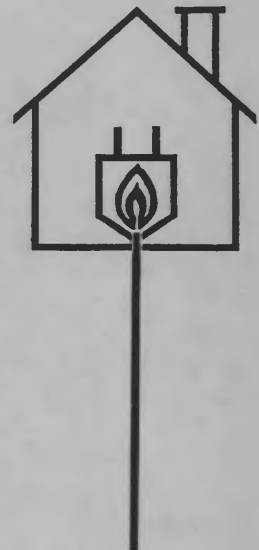
- Heat Pump
- Furnace
- Ceiling Cable, Baseboard, Cove
- Boiler

I did \_\_\_ did not \_\_\_ use the electric heat during the last heating season.

I do \_\_\_ do not \_\_\_ have an automatic alternate heating system installed.

(Check type)

- Gas (Natural)
- Gas - LP
- Fuel Oil
- Wood



Name \_\_\_\_\_

Account No. \_\_\_\_\_

Phone No. \_\_\_\_\_

Do not send in this coupon if you do not have electric heat.

# Security lighting

Your cooperative has the high pressure sodium security light available, in addition to the mercury vapor security light which has been popular for many years.

Recent studies by your cooperative indicate that the H.P.S. light creates less KW demand and uses fewer kwhr's in comparison to the mercury vapor light.

H.P.S. lights are available for \$5.25 per month and the mercury lights are \$7.00 per month.

If you would like a security light installed, or if you wish to replace an existing mercury light with a H.P.S. light, please complete the information requested below.

I would like to have a security light installed.

I would like to change the mercury vapor security light to a H.P.S. security light.

\_\_\_\_\_  
Signature of Member

\_\_\_\_\_  
Address

\_\_\_\_\_  
Member's Account No.



---

**Install a new electric water heater before December 31, 1986 and get a \$150 check from Menard Electric Cooperative**

---

Time is running out on the cooperative's offer to give you a \$150 check for installing a new electric water heater. This offer expires December 31, 1986.

To be eligible for the \$150 check the water heater must be at least a 40-gallon model and must meet the ASHRAE 90 standards. If your water heater becomes faulty or if you replace a fossil fuel water heater with an electric model which meets the above standards, you are eligible for the rebate.

In order to receive the rebate, please supply the cooperative with the proper sales information and dealer's receipt which should indicate the size, type, brand, model number and certification that the water heater meets the ASHRAE 90 standards. After installation, cooperative personnel must inspect the water heater to determine that it has been installed in an active cooperative service.

Remember this offer expires December 31, 1986!

## Why Menard is installing heavier wire

Some of you may have noticed the wire that your cooperative is using to rebuild lines is considerably larger than the old wire. There are several reasons that the new wire needs to be larger. When the original wires were installed, electric usage was a lot less than it is today. Larger electric loads can be carried with less chance of overloading the lines if the size is proper. It also helps minimize the voltage drop between the substation and the member's home. This is true even though the new conductors are aluminum and not the copper that was used in the late 30's and early 40's.

These larger wires also have less resistance, which helps reduce line loss (line loss is the difference between the amount of electricity the cooperative buys and the amount of electricity sold). Reducing these losses helps

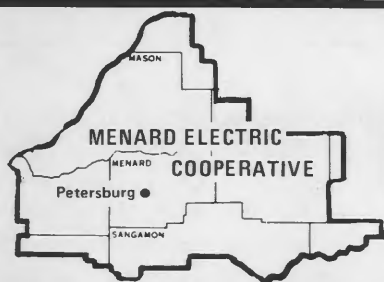
reduce the total operating expense.

The larger wire is more expensive to buy, build and maintain. In addition to the added cost of the wire, we often must use bigger and/or more poles, additional guying, heavier hardware, insulators, crossarms, braces, etc. Care must be taken not to undersize the

conductor, which would cause the amount of purchased power to increase, or not to oversize the wire and cause the cost of the construction to increase unnecessarily.

It is through engineering studies that the balance between line size and line cost are maintained.

**Thinking about an 80-90 percent efficient furnace? Why not ask us about the 350 percent efficient Earth-Coupled Water Source Heat Pump!**



# Menard Electric News

MENARD ELECTRIC COOPERATIVE 217-632-7746 PETERSBURG, ILLINOIS 62675

## Co-op Comments

## Winter bill assistance

Jessie Fricke of Petersburg completed 15 years of service with your Cooperative on December 1. Jessie is the radio dispatcher for your Cooperative and normally handles all connects and disconnects when members call the Cooperative office.

•••

**Reminder on outages:** If your service should go off and after you have determined that the trouble is probably the Cooperative's, the phone number to call during normal business hours is (217) 632-7746. After 4:30 p.m., weekends and/or holidays, please call the answering service at (217) 632-2311. Give the person taking the call your account number, your name, phone number and anything you know about the outage. Never try to repair Cooperative line troubles or touch downed wires. On outage calls only, the Cooperative will accept collect calls.

•••

Thank heavens this is a free country where a man can do as his wife pleases.

•••

As a substitute for storm doors and windows, sheets of plastic will perform almost as well as an extra pane of glass. This will help you keep comfortable more economically this winter. Weather stripping and caulking are also of substantial value.

Caulking compound comes in a variety of types, each with its pros and cons. When selecting caulk for use in a specific place in your home be sure to read package labels for details on what surfaces it does and

High winter energy costs can be a terrible burden to a family trying to live on a limited budget already stretched by other essential items, such as housing and food.

If your family is struggling to make ends meet, don't let your energy bill go past the deadline without contacting the Cooperative so that we may be of assistance by providing you with a list of the local, federal and state programs that are available to low income families and senior citizens. We will be glad to put you in touch with the proper agency to determine if you qualify for assistance.

The following organizations have applications available for those who need help paying their energy bills. You may contact:

Central Ill. Economic Development Corp. 861 S. State Street Lincoln, IL 62656	(Logan) (Menard) (Mason)	217/732-2159 217/632-3137 309/562-7636
Decatur Macon County Opportunities Corp. 1122 East Marietta Decatur, IL 62525	(Macon)	217/428-2193
MCS Community Services 1201 South Main Jacksonville, IL 62651	(Morgan) (Cass)	217/243-4711 217/243-4711
Sangamon County Community Development 2525 Sangamon Avenue East Springfield, IL 62702	(Sangamon)	217/789-6688
Tri-County Regional Planning Commission Post Office Box 2200 East Peoria, IL 61611	(Tazewell)	309/694-4391

or doesn't stick to, its ability to remain the same through all types of conditions and how long it remains effective.

Oil- or rosin-base caulk is low in price, but usually has a short life span. Latex-base caulk is easy to use, paintable and provides a good seal. Vinyl latex is suggested only for

interior use and acrylic latex may deteriorate if used in permanently wet spots. To fill extra wide cracks before caulking you can use a rope-like material called oakum or caulking cotton, sponge rubber or fiberglass filler. Urethane foam spray is good for filling large cracks and provides a good insulating seal.

# Board meeting report

---

The regular monthly board meeting was held in the Cooperative offices on Monday, November 24, being called to order by president Bell at 8:30 a.m. All members of the Cooperative board were present except Dale Lepper. Also in attendance were staff members Earl Pillsbury, Wayne Jones, Dave Crosnoe and Terry Entwistle. After approval of the agenda, the minutes of the special meeting held October 13, special meeting October 24, and the regular board meeting of October 27 were approved as presented.

First order of business, attorney C. K. Smith reviewed for the board the current status of the lawsuit concerning the FRIER group against Illinois Power.

Manager Smith reviewed the monthly operating statement, balance sheet, and budget comparisons. Outage summary for the month indicated less outage time than for the comparable month a year ago. This month as part of the manager's report manager Smith asked each of the staff members to summarize for the board the activities of their department and some of the accomplishments made throughout the year. The safety report indicated one lost time accident for the month of October. Manager Smith also requested the board approve the participation in the IEC Crime Watch Program, which employees will take part in trying to be "eyes" for local law enforcement agencies. The board approved the Cooperative being involved in the Crime Watch activities.

System engineer Dave Crosnoe reported to the board the current status of the PCB handling and that policies will be forthcoming for the board to adopt in regard to the standard procedures and spill plan.

In order to ensure good data from several of the substations, Manager Smith requested authorization to have new metering installed in four substations in the Cooperative territory. This would be

installed and maintained by WIPCO and would provide information consistent with all the rest of the substations. The board approved this request.

Manager Smith presented the power requirement study for board approval. This power requirement study was prepared in conjunction with the power requirement study done for Western Illinois Power Cooperative and will be used in forecasting loads and system requirements for the next several years. The board approved the study as presented.

A letter from the Village of Sherman requesting that the Cooperative consider the sale of facilities within the village limits was presented to the board. After a thorough discussion of this request, the board reaffirmed the position that the sale or release of members and/or services would only serve as a detriment to the financial condition of the Cooperative and for the remaining members. Manager Smith was instructed to answer the Village letter.

Director Bob Brauer reported on the recent meeting of the annual meeting committee and informed the board that the annual meeting will be held during the month of June, probably June 13, with an agenda and program similar to what we have been doing in past years. He also mentioned that since this will be the 50th annual meeting maybe something special would be done for this observance.

Director Robert Zook reported on the recent meeting of the capital credits committee, and reported that at this time the committee felt that any surplus of margins should be credited to the Cooperative's obligation in the equity funding.

The board elected to take the discounted rate on two CFC notes that have been converted from a fixed interest rate to a variable interest rate rather than amortize these conversion payments over the remaining life of the loan.

Manager Smith reported on the

joint meeting of boards of directors of M.J.M., Rural Electric Convenience Cooperative Co. and Menard Electric. This meeting proved to be very enlightening to all members, however, the board elected at this time not to pursue these joint meetings at any greater length.

Attorney C. K. Smith presented to the board a request to modify the policy in regard to the retainer for legal counsel. The board approved the policy changes in regard to legal counsel retainer and also agreed to the amount specified for the retainer. After recess for lunch, the board went into executive session for a performance appraisal of manager Smith and after the executive session informed manager Smith they were offering him a contract and advised him of the salary arrangements.

Special services coordinator Earl Pillsbury then reviewed for the board the insurance coverage for 1987 and what could be expected in insurance rate increases. He also reported on the director search committee, which is recommending a replacement for retired director Davis.

The board considered two policy changes in regard to the investment of general funds, allowing that money market accounts in addition to other instruments could be used for investment purposes and made general changes to the policy in regard to banking institutions to include Savings and Loan and other banks in the Cooperative territory.

President Bell reported on the AIEC activities.

As director Zook had to leave, manager Smith reported on the WIPCO activities, including the status of the debt restructuring and refinancing.

The board approved agreements for electric service, the inventory of work orders for September 1986, the payment of bills for the month of October. Membership applications for the month of October were accepted as presented and the direc-

tor's special occasion vouchers were also approved. President Bell appointed the labor committee for the year 1987 consisting of director Allspach, chairman; directors Cline and Brauer, members, and director Lepper as an alternate. The time for

the December board meeting was discussed and it was decided that the December meeting will be at 8:30 a.m. on Monday, December 22.

Manager Smith pointed out that the employee/director Christmas party will be December 12 and a

number of directors have been enrolled for the continuing education course to be held at the AIEC on December 2 and 3.

There being no further business meeting adjourned.

## Menard Electric Cooperative policies

Policies are one of the most useful planning tools of the board of directors and the manager of your electric cooperative. It is necessary for employees and directors to have a clear picture of what policies are, what they are not, and why they are needed.

In addition, policies become the guide for decisions without undue delay. The operating rules for members of the Cooperative are outlined in the policy manual and in the section that is concerned with requirements for membership, member obligations, etc. Three paragraphs of this policy are listed below for the information of all Cooperative members.

**Meter Tampering/Diversion:** Tampering with Cooperative meters to cause a reduction of electric

usage or diversion of electric use around the meter will subject said service to all costs involved in restoring the meter and service to its proper order, the estimated kilowatt-hour consumption over the period of time involved in the tampering or diversion, plus a \$100 service charge.

**Unauthorized Connection or Reconnection:** Any service that has been connected or reconnected by a member regardless of their reason for disconnection shall be subject to a \$25.00 service charge in addition to all charges necessary to connect or re-establish this service.

**Missing Meter Seals:** Where meter seals are found to be missing from a Cooperative meter installation, an employee will be dispatched to check the service meter and other

Cooperative facilities to verify that no tampering or diversion of electricity occurred. If it is determined that only the seal was cut, a letter will then be mailed to the member as to the fact that the seal was missing and what the meter seal represents. The letter shall state, in effect, that if the meter seal is missing a second time appropriate charges will be made for re-sealing this service.

It is the life and health of our members that we are concerned about. If you have reason for the meter seal to be cut at your installation, please call the Cooperative office and we will be happy to dispatch an employee to perform this responsibility.

## Why was my electric bill higher last month?

Several reasons may cause your bill to vary from month to month. As an example, the number of days between meter readings may fluctuate. All electric meters are not read on the same day. Normally, meters are read during a three-day period centered on or about the 19th day of each month, but this can vary as much as two or three days due to weekends, holidays, extreme adverse weather, etc.

Holiday cooking, cleaning, lighting and decorations may also add kilowatt-hours to your monthly bills due to the season of the year.

Any change in the size of your family will also affect your electric usage. In addition to the family, guests staying overnight will affect your kilowatt-hour usage because

more dishwashing, more laundry, cooking, and more bathing occurs, adding kilowatt-hours to your bill.

The greatest single factor affecting your monthly electric usage is the weather. During colder weather it is possible to use up to twice the average amount of electricity for heating in any one month. The same is true for excessively hot summer days and the use of air conditioning.

Although it is hard to recognize, any change in your normal living pattern will affect the amount of electricity you use. Special meals or care for an invalid, a house guest for the weekend, a party, a waterbed or adding a new appliance to your home, all add kilowatt-hours.

### *Please note — we care!*

From time to time, we are made aware that some of the members are very dependent on electric power for their health care or survival needs. We're never quite sure what, if anything, we can do during outages and the like. However, your employees are "just human enough" to want to try and we'd appreciate your help in making us aware of who these members are. If you have special needs because of age or health (or know someone) please drop us a note. We will keep a file and if we can do something — we'll try. Your employees care!

# Cold weather service termination

Electric service to a residential member for non-payment of bills will not be terminated during the period of December 1st through March 31st: a) on any day when the National Weather Service in Springfield, Illinois includes a forecast that the temperature will be 32 degrees Fahrenheit or below during the following 24 hours, or b) on any day immediately preceding a

holiday or weekend when such a forecast indicates that the temperature will be 32 degrees Fahrenheit or below during the holiday or weekend, unless the member has defaulted on one of the following arrangements. Such arrangements being: (1) a deferred payment arrangement with respect to payment of the past due amount of the energy bill; (2) a level or

budget payment plan for future bills; (3) paying the minimum down payment required on the amount due and owing; (4) unless the member has refused to comply with conditions (1), (2) or (3) listed above.

If you have questions with reference to the above, please feel free to contact the Cooperative office.

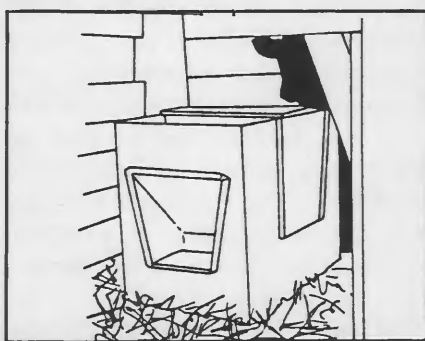
## Make sure your stock waterer is ready for cold weather

With colder weather upon us, Menard Electric Cooperative reminds those with livestock to turn on heaters in water troughs. Remember, too, that the operation of the water heater will be reflected in increased kilowatt-hour consumption on billing during the winter months.

It is also a good idea to check your water pump to make sure it is operating properly.

One major problem with water systems is a water-logged tank. As water flows through the tank, air is gradually absorbed and the air supply needed to pressure the water is decreased.

As a result, the tank loses its capacity to deliver water and instead of the normal seven or eight gallons being drawn, delivery is reduced to a gallon or less before the drop in



pressure activates the pump. The result is very short cycling of the pump called "water logging." The pump not only runs more often, using more electricity, but the pump could be damaged. To correct the problem, air must be added to the tank.

Also check for faulty control switches and line leaks. They too can result in improper operation and excessive electricity usage. A thorough inspection of your water supply system is a good investment.



### Season's Greetings

The Cooperative office will be closed on Wednesday, December 24, and Thursday, December 25, in observance of Christmas.

The Cooperative office will be closed on Thursday, January 1, in celebration of the New Year.

## Water heater control can save you money

If you have an electric hot water heater, why not request the Cooperative to install a load control device so that you may save three cents per kilowatt-hour on kilowatt-hours used from 600 to 1,000 each month. A maximum reduction of \$12 is possible.

### Attention vacationers

If you are going to be on vacation at the time when payment of your power bill is due, please make arrangements to have someone pay the bill, make an advance payment on an estimated bill or at least notify us that you are going to be gone.

Unless you notify our office, we have no way of knowing that you are on vacation and we can only assume that your bill is delinquent.

## METER READER POSITIONS OPEN

Your Cooperative has contractual meter reading positions open in the Athens and Petersburg areas. Meters are generally read on the 19th, 20th and 21st of each month.

Applications are being accepted from Cooperative members and if you are interested, please complete the form below and mail or bring it to the Cooperative office.

Name \_\_\_\_\_

Address \_\_\_\_\_

Account No. \_\_\_\_\_

Telephone No. \_\_\_\_\_