

New Electronic Pain Killer...

relieves backache, headache, even pain of tennis elbow, arthritis & bursitis!

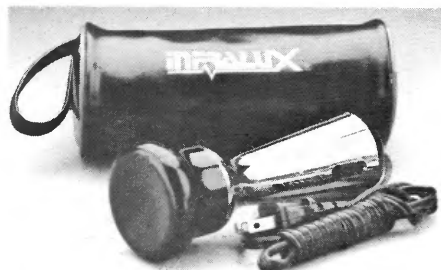


Tested by doctors, INFRALUX™ is handheld and portable. Its infrared heat relieves pain without medication! FDA registered. Try it FREE for 30 days!

Say goodbye to pain. No matter the type you suffer from—headaches, tennis elbow, arthritis, bursitis, sinusitis, backache, neuralgia, muscular pains, sprains, or any musculoskeletal condition—here is a quick easy answer. Put INFRALUX next to the pain and within minutes, you can get on with work or play.

SOOTHING PAIN RELIEF. BUT WHY INFRARED HEAT?

There is nothing new about infrared heat. Doctors and therapists have used and recommended it for years in pain treatment. But until now, there hasn't been a compact, easy-to-use unit.



Why infrared? With ordinary methods such as heating pads and hot water bottles, much of the heat is dissipated on the skin's surface. There's no lasting effect.

But with infrared heat, the treatment goes down d-e-e-p where you need it. In fact, INFRALUX's shortwave, visible infrared heat will penetrate up to 10mm of skin tissue to reach irritated nerve endings. Your INFRALUX seeks, finds and soothes!

ELIMINATE UNNECESSARY MEDICATION.

In fact, William J. Shriber, MD notes in his respected "Manual of Electro Therapy" **THAT MILD INFRARED RADIATION MIGHT BE THE ONLY WAY TO RELIEVE PAIN WITHOUT THE USE OF MEDICATION.**

Why take medication when it isn't needed? INFRALUX is the most natural route to pain relief.

HOW THE INFRALUX WORKS.

All you do is hold the INFRALUX unit next to where you hurt. It even works thru clothing! Within moments, you'll sense comforting, soothing heat.

INFRALUX heat goes to where the pain is—to blood vessels, nerve endings, and other subcutaneous tissue.

USE AS OFTEN AS NEEDED.

Unlike drugs and medication, INFRALUX can be used as often as needed. It's made to help you day or night, at home or at work. And be

sure to pack it for out-of-town trips. You can enjoy soothing relief wherever, and whenever.

U.L. LISTED

INFRALUX is easy to carry too in its handsome vinyl bag. No bigger than a small flashlight (six inches long). It plugs in any 110V outlet and it is U.L. listed for your safety.

TRY IT FOR YOURSELF

The minute your INFRALUX arrives in the mail, give it a good try. Put it to the test on that nagging backache, that stiff neck, those arthritic pains that hit so suddenly. If, after a month, you're not astounded at how much better you feel, return it for a full refund.

HERE'S HOW TO ORDER

INFRALUX is only **\$39.95** (plus \$2.85 shipping and handling). To order, simply send your check to Baystar at the address below. Credit card holders can speed their delivery by using our toll-free number. (Maryland residents add 5% tax.)

CALL TOLL FREE

Monday thru Friday 9am-5pm Eastern Time

800-638-6170

All other times call **800-257-7850**

Maryland residents call 363-4304

Be ready the next time pain interrupts your schedule. Order an INFRALUX today!

Baystar

110 PAINTERS MILL ROAD DEPT. N47
OWINGS-MILLS, MD 21117 (301) 363-4304

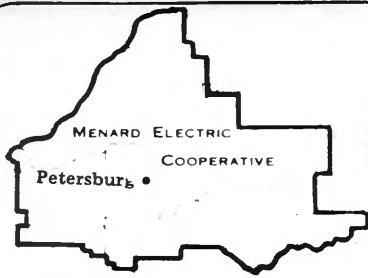
©The Baystar Company 1983

RECOMMENDED BY DOCTORS

FROM ACTUAL DOCTORS' REPORTS ON INFRALUX:

"I have used the unit in my practice for six months and I find it relieves pain and muscle spasms, stiff shoulders and elbows from bursitis and tendonitis. Patients suffering from arthritis use the Infralux in the morning and get excellent results." J.L.G., MD

"On patients with a variety of musculoskeletal painful conditions, Infralux was demonstrated to be effective in relieving pain." V.S., MD



Menard Electric News

MENARD ELECTRIC COOPERATIVE 217-632-7746 PETERSBURG, ILLINOIS 62675

Co-op Comments

Orene Lynn of Tallula will complete 15 years of service with your Cooperative on February 1. Orene is the Assistant Data Processing Operator for your Cooperative.

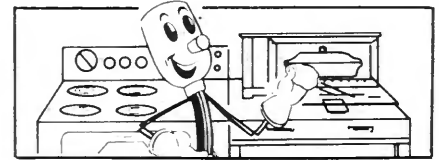
Effective January 1, Western Illinois Power Cooperative experienced a rate increase for wholesale power it purchases from Central Illinois Public Service Company. The overall increase to WIPCO amounts to approximately 24 percent.

Your Cooperative does not anticipate increasing the base rate of electricity which was last altered early in 1982, however, any increases that your Cooperative experiences will be passed on to you through the power cost adjustment factor for each kilowatt-hour used. It might be of interest that retail customers of Central Illinois Public Service are also experiencing a similar increase in the price of electricity, in addition to an increase in the

price of natural gas.

If you are having problems paying your monthly energy bill, please contact your Cooperative office immediately. Many people, particularly those on low and fixed incomes, may qualify for assistance in paying utility bills from local, state or federal organizations. We will be happy to provide a list of names, addresses and telephone numbers of these organizations, some of which are listed in an adjoining article.

Insulating your home will improve your personal comfort all year 'round. Insulation is made in a variety of easy to install materials and forms. The effectiveness of insulation is measured by the "R" factor and the higher the "R" number, the more the insulating power. While there may not be a single best kind of insulation for all applications, there is a best insulation for each application. Feel free to ask us or your building supplier or contractor for the type and thickness for your needs.



Kitchen savings

Your kitchen appliances may be using 25% more electricity than needed.

- 1. Your refrigerator may be the biggest energy culprit in your kitchen.** Vacuum the coils every 3 or 4 months. Inspect the refrigerator door seal by placing a flashlight inside a closed refrigerator - if you see the light showing through cracks you may need a new door gasket. And use the "energy saver" switch if you have one.
- 2. Cool the hot water use.** Cut laundry hot water use in half by using cold water in the laundry rinse, and warm or cold water in the wash cycle.
- 3. Don't let your dishwasher be a "dishdryer" too.** If your dishwasher has an energy saver button, use it! If not, try stopping the washer before the drying cycle and allow dishes to dry naturally. You can cut its electricity use in half!
- 4. Keep the lint screen clean on your dryer.** Consider installing a vent diverter in the dryer exhaust pipe to keep warm air inside during cold weather and divert it outside in summer.
- 5. Read the "Energyguide" label if you're buying a new refrigerator, dishwasher or washing machine.** It shows you which models are most efficient. Some appliances use twice the energy of similar models.

Other Energy Saving Tips

- Run dish and clothes washer only when *full*.
- Defrost freezer when ice is 1/4" thick.
- Use major appliances during "off-peak" hours.
- Consider using fluorescent lights.

Breaking meter seal is illegal

Seals on electric meters are the same as locks on doors. Breaking the meter seal is the same as breaking a door lock, and illegal entry. It is extremely dangerous to break a meter seal because serious injury or electrocution could result if contact is made with electric wires in the meter socket.

Your electric Cooperative is a non-profit organization, owned and controlled by its members. One member taking electricity without paying for it contributes to the overall increase in the price of electricity for all members. Your electricity is purchased

wholesale from WIPCO and passed on to members through your Cooperative's distribution system. The total membership actually pays the real cost of providing service.

Tampering with the meter, unauthorized connection of service or diverting electric energy for the purpose of reducing kilowatt-hour registration or to avoid payment for energy used are illegal. If your Cooperative finds meters with broken seals, and other evidence of diversion of electricity, proper action will be taken.

Illinois home energy assistance program

The 1983 Illinois Home Energy Assistance Program (IHEAP), is now underway. The guidelines for the program are much the same as in 1982. In addition to IHEAP, each county has either township supervisors, county emergency relief, and Illinois Public Aid agencies.

When making an application for assistance from IHEAP, be sure to take evidence of your income for the past 90 days with you and a copy of your current energy bill.

Should you believe that you may be eligible for IHEAP assistance in paying your energy bill, please contact the agency office in your area. The latest information available to your Cooperative indicates the current location of the IHEAP offices as follows:

Cass Co. — 103 West 3rd St., Box 4, Beardstown, 62618, ph. 323-5844

Logan Co. — 861 South State St., Lincoln, 62656, ph. 732-2159

Macon Co. — 1122 E. Marietta,

Decatur, 62625, ph. 428-2193

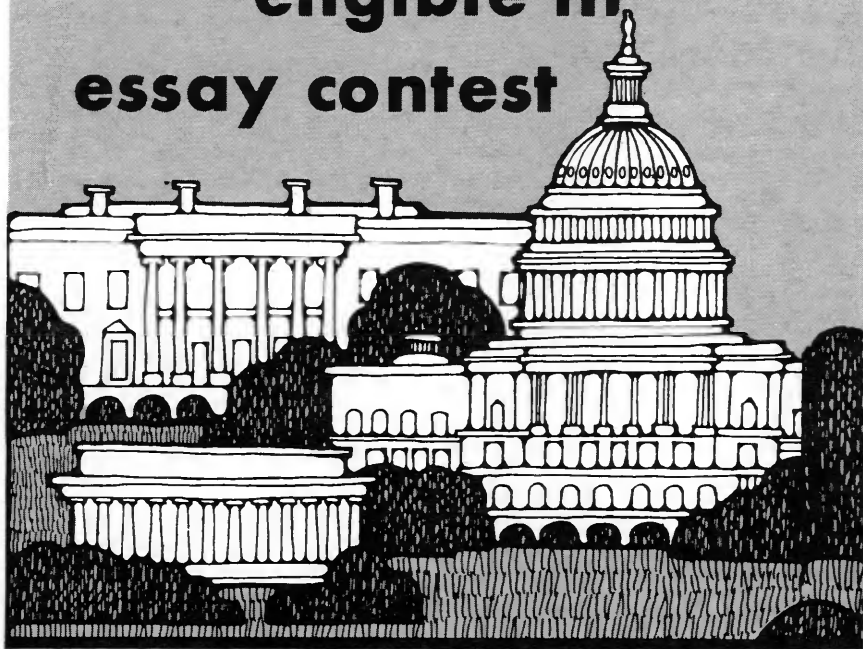
Mason Co. — Route 10, Easton, 62633, ph. 632-3137

Morgan Co. — 300 W. State, Jacksonville, 62650, ph. 245-4619

Sangamon Co. — 2525 Sangamon Ave. E., Springfield, 62702, ph. 789-6688

Tazewell Co. — Tri-County Regional Planning Commission, Illinois Central College Campus, Douglas Hall, East Peoria, 61611, ph. 694-4391.

High school juniors eligible in essay contest



The directors of Menard Electric Cooperative are pleased to sponsor an essay contest, which will permit two high school juniors in the cooperative service area to win a week's all expense paid trip to Washington, D. C. and other points of interest.

Essays will be judged on originality, accuracy of facts, content, composition, and knowledge of the subject matter. Winners will leave Springfield on June 10 and return on June 17.

Any high school junior enrolled in

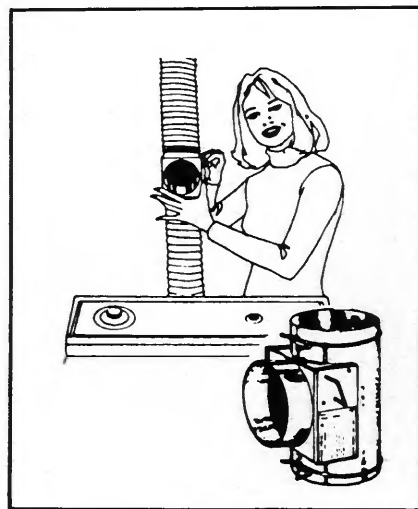
the eleventh year and attending a high school serving, or substantially serving, the same area as Menard Electric Cooperative may enter.

Other details on the essay contest are available at the cooperative office and at each high school in our service area. Anyone interested in getting an early start in preparing his/her essay are urged to write: Menard Electric Cooperative, P.O. Box 179, Petersburg, Illinois 62675.

Add heat to your home while using your clothes dryer

By utilizing your dryer to heat your home, you save \$ per month in winter heating costs three ways:

1. The heat saver directs 20,000 BTU's per hour of heat into your home, as much as three space heaters!
2. Prevents cold air from entering your home while dryer is running.
3. The heat saver tightly seals the vent hose, keeps cold air out, the warm air in.
4. The heat saver humidifies your home during dry winter months, takes minutes to install since it splices into your dryer's vent hose, is sold complete with instructions, lint filter and mounting clips, and is safe for use on gas or electric clothes dryers.



Agriculture outlook

Farm problems 'extend beyond the

There will be a lot more food in the world than people will eat this year and, because of that, American farmers are heading into their fourth straight year of depressed income.

The federal government isn't guessing what farmers will earn in 1983, since Agriculture Secretary John Block banned the traditional farm income estimates a year ago. But analysts at the Agriculture Department's annual Outlook Conference in December doubted net farm income would change much from last year's \$19-billion — more than \$13-billion less than just three years earlier.

As a result, rural areas that depend on agriculture will continue their economic suffering, say Department economists.

"Any improvement will come very slowly," said J. Dawson Ahalt, deputy assistant agriculture secretary for economics. He added, "These financial problems extend beyond the farm gate and affect farm suppliers and other farm-related businesses."

Specifically, crop prices have fallen to 1978 levels as the cost of producing

those crops continues to rise. Land, which farmers have traditionally been able to use as equity for loans to get them through hard times, has fallen in value during the last two years. Farmers' net cash flow decreased \$1-billion in 1982 to a five-year low of \$37-billion and the total farm debt jumped 10 percent.

The reasons for such depressing figures are complex as the world economy itself. Simply stated, there's a food glut. Experts expect that world grain reserves will reach a two-month supply this year, "the highest global stocks-to-use ratio in more than a decade," according to Ahalt. Nearly 60 percent of that surplus is in the United States.

Record production of some crops has come at the same time as a faltering world economy and a stronger dollar have made many countries unable to afford to import as much food, especially from the U.S. The volume of U.S. farm exports dipped two percent last year, but the value of those exports fell 11 percent as the oversupply depressed prices.

"Many of the problems that plagued us in fiscal 1982 unfortunately will not go away in fiscal 1983," said Alan Tracy, deputy under secretary for international affairs. He predicts that while farm exports will rise three percent this year, they will drop in value by four percent.

"The likelihood of a continued strong U.S. dollar, a weak global economic recovery, and smaller Soviet grain imports are likely to restrain the volume and value of U.S. exports," said Tracy.

The Reagan Administration hopes that continuing attempts to develop foreign markets through credit programs and overseas visits by sales teams will combine with a general economic recovery to boost farm exports and prices.

Martin Feldstein, chairman of the White House Council of Economic Advisers, said at last month's Outlook Conference that federal budget deficits expected to top \$150-billion would hurt U.S. exports. Heavy government borrowing forces more competition for credit, he explained, pushing up



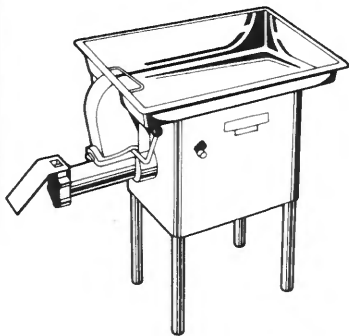
THESE TOLEDO SCALE FOOD GRINDERS ARE WORTH THIS MUCH

CASH TO YOU

RIGHT NOW

\$500.

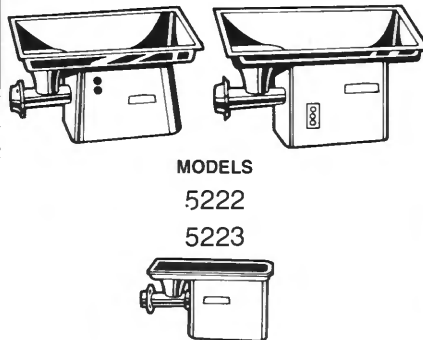
MODELS
5324
5460
5522



\$375.

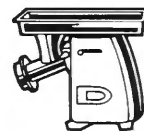
MODELS
5426
5323
5521

MODELS
5425
5520
5560

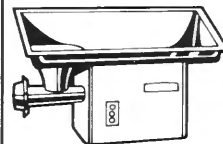


\$250.

MODELS
5320
5321



MODEL
5322



AND IF YOU EVEN *LOCATE* ONE FOR US, IT'S WORTH **\$25**

Toledo Scale wants these grinders back. Not because they don't work, but because they do. These grinders were designed for safe, efficient use. But they've been around a long time. Many now have original safety equipment removed or damaged. Such conditions pre-

sent a risk of serious injury, to the point of operators losing fingers or hands. If you have one of these Toledo grinders, or know of someone who does, it can be worth money to you and them. Take a look. Then contact us as soon as you can.

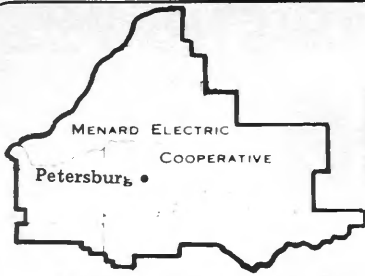
CONTACT:

Write to Cindy Szabo, Toledo Scale, 350 W. Wilson Bridge Rd.,
Worthington, Ohio 43085 with your name, address,
and Toledo grinder model number.

OR CALL, TOLL-FREE 1-800-848-4375
IN OHIO CALL COLLECT 0-614-438-4909

Toledo Scale/Retail Industry Division/Worthington, OH 43085/1-800-848-4375/In Ohio Call Collect 0-614-438-4909

TOLEDO SCALE 
RELIANCE ELECTRIC



Menard Electric News

MENARD ELECTRIC COOPERATIVE 217-632-7746 PETERSBURG, ILLINOIS 62675

Co-op Comments

Meter readers coming to Menard

What is the hallmark to some — and a minor inconvenience or major chore to many — will come to an end this spring, when Menard Electric Cooperative launches a meter reading program. The benefits of such a program were carefully studied and *even though the cost of electricity will be increasing in 1983, it will be less with a meter reading program.* With this information, the board of directors, at their January board meeting, made the decision ending the custom of self-read meters in favor of the cost effective hired meter readers.

Under the plan approved by the board of directors, meter readers will be hired by the Cooperative to read more than 7400 single-phase meters throughout our eight county service area during a three-day period each month. The new program will result in consistent billing periods, improved communication with members due to elimination of elongated billing periods, and a reduction in the time-lag between consumption of electricity and receipt of energy bills. Approximately 40 persons will be hired on a part-time contractual basis, to carry out the meter reading program. The Cooperative will achieve major savings in administrative costs, as well as a reduction in line loss. The program will pay for itself in actual dollar savings with the ultimate benefit going to our membership through lower energy bills, due to the efficiencies gained.

When electric cooperatives were launched in the 1930s and early 1940s, to serve sparsely populated rural areas, members were asked to

read their own meters, as distances to travel were great and roads were poor. Although some members will view the new meter reading program as an unwelcome change, others will be glad to do away with the need to read their own meters monthly.

The first Illinois cooperative to launch such a meter reading program, started in 1975. A second followed in '77 and two others have adopted similar programs since. Menard Electric has evaluated these programs carefully, hoping to learn from their experience and to smooth the transition for our members. Using information from these evaluations, and local studies, your board decided the time was right to launch such a project for your Cooperative.

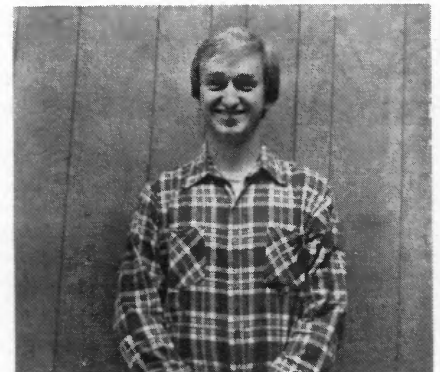
Although having each member read his own meter has worked in the past, changing situations calls for us to go to a different method in an effort to hold the cost of electricity at as low a level as possible. There are many definite advantages to an area meter reading program. Some are: (1) insures that the meter will be read on approximately the same day each month, thus avoiding high bills in a long month; (2) eliminates embarrassment on the part of the member for forgetting to read the meter; (3) precludes estimating electric bills when a meter reading has not been received and will relieve the member of the chore of meter reading and the inconvenience associated with it; (4) meter readers will enable the Cooperative to maintain closer contact with changes that have occurred; (5) newcomers to our system will not have to make the adjustment to reading their own meter; (6) operations will run more smoothly and efficiently in the billing department with readings coming in on a regular basis; (7) improved accuracy in the billing operation and questions concerning usage can be answered more efficiently

because meters are being read with regularity; (8) Cooperative employees will be able to devote more time to maintenance of Cooperative facilities.

There are many advantages not listed above and in addition there are some fears and/or disadvantages such as inclement weather, however, we believe that members will like the area meter reading program. In many cases the meter reader may be someone you already know.

In order to reduce the time-lag between consumption of electricity and receipt of bills, an additional billing period will be added in 1983. When the program is fully implemented, the time-lag will be reduced to approximately 10 days and will be a definite advantage to all Cooperative members.

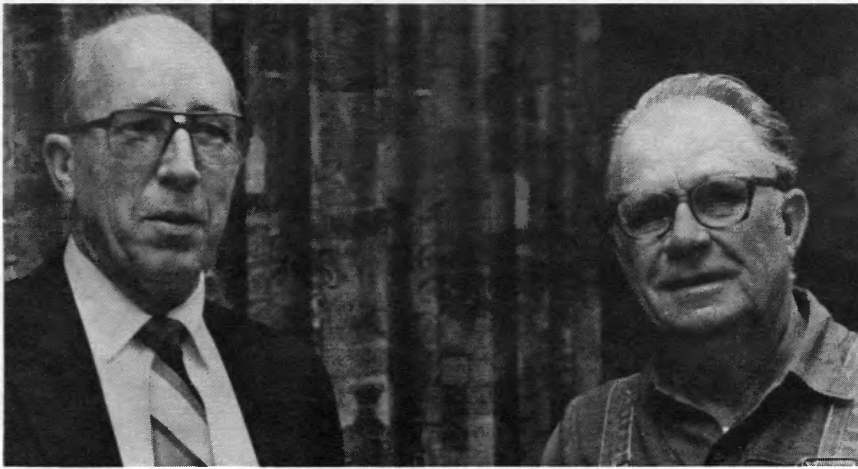
Additional information concerning the meter reading program will be included in the February billing and the March issue of the REN.



Dwaine E. Heyen

Dwaine E. Heyen, of Petersburg, began employment with your Cooperative on January 3, 1983. Dwaine was born in Menard County and is a 1978 graduate of PORTA high school.

Dwaine is the son of Mr. and Mrs. Harry Heyen of Petersburg, and was formerly employed by National Standards at Havana, Illinois. He is married to the former Renee Lutchka of Petersburg.



Manager John Root, left, congratulates James Bearden on his retirement.

James A. Bearden of Greenview, retired from your Cooperative on February 2, 1983, with nearly 25 years of service.

Bearden began employment on April 14, 1958, and has served on the tree crew and as a groundman-truck

driver, during nearly a quarter of a century.

Bearden was born west of Kilbourne, and has spent his lifetime in Mason and Menard County. He and his wife, Hazel, have two sons and five grandchildren. The Beardens anticipate

ME
having more time for travel and fishing in their favorite locations in Minnesota and Florida. Jim also expects to do some remodeling on his house and plans to establish a small workshop in his garage to do repairs and work on motors, etc.

In reviewing his long tenure as a loyal Cooperative employee, Bearden pointed out that only four current employees have been with the Cooperative longer than he. Bearden has seen storms come and go but remembers a few months after he began employment with the Cooperative, the ice storm of 1959. He also points out that the 1978 ice storm was the "granddaddy" of them all.

We know that the members of the Cooperative join us in wishing Jim many happy years of retirement and want to say "thanks" for his many years of service.

WANTED: meter readers

Would you be interested in spending two or three days each month, reading electric meters in a given area and add a bit to your income? If the answer is yes, here is your opportunity. Your Cooperative is planning an Area Meter Reading Program and is looking for responsible Cooperative members who would like to fill these positions.

Approximately 40 members will be needed to read meters on routes that will include up to 200 meters, depending on the density of a particular route. Readings will be taken within a three-day period each month, and we expect the average time required to read each route to be 16-20 hours. The normal three-day reading period will be around the 20th of each month, depending on the weekends and holidays. No meters will be read on Sundays.

Members selected as Area Meter Readers will be required to furnish their own transportation. They will be paid on a contractual basis and receive mileage for use of their automobile. In addition, they will be required to provide a certificate of insurance on their automobile. Request for an application for a meter reading position must be received by March 7 and completed applications must be received not later

than March 11. The Meter Reading Program will start in April of 1983.

In selecting meter readers, consideration will be given to where the applicant lives. Ideally, he or she should be located in close proximity to the proposed meter reading route. Another important factor in selection of the readers will be their knowledge of the area to be read, along with adequate, dependable transportation and general ability to fulfil the necessary responsibilities.

The Cooperative will also select alternate or relief meter readers, in case of illness, or other unavoidable absence.

The meter readers we employ on a contractual basis will receive appropriate training. Instructional sessions conducted by Cooperative personnel, will provide detailed information of responsibilities and the routing of the area involved.

If you believe being a meter reader is something you would enjoy, please complete the form on this page and return to the Cooperative office promptly. It isn't a big job, and you won't earn lots of money, but we think many people will find this type of work enjoyable and interesting and it will provide a chance for supplemental earnings.

TO: MENARD ELECTRIC COOPERATIVE
P.O. BOX 279
PETERSBURG, ILLINOIS 62675

I am interested in being a Menard Area Meter Reader. Please send me an application form. I am a member of Menard Electric Cooperative.

NAME: _____

ADDRESS: _____

CITY: _____ ZIP _____

TELEPHONE _____

(area code)

(number)

ACCOUNT NO. _____

(This must be received by the Cooperative not later than March 7, 1983.)

“I can show you why a genuine Bonanza Building is the best buy for your budget.”



BONANZA BUILDINGS

Mr. Ken Ruegsegger
West Liberty Builders
West Liberty, Iowa



Builder territories available in a few selected areas.

I can show you this value because I build what I sell — the genuine Bonanza building.

There's a Bonanza Builder near you who can show you how you can get the best value for your dollar in farm, horse barn or commercial buildings.

**Call today or send us the coupon.
Call Toll Free 1-800-637-2046
From Illinois Call 1-800-252-5735**

Have the nearest Bonanza Builder contact me.

NAME: _____

ADDRESS: _____ PHONE: _____

COUNTY: _____ TOWN: _____

STATE: _____ ZIP: _____

I'm interested in: Machine/Storage Utility Garage
 Hog Horse Dairy Beef Business

Bonanza Buildings, Inc.
P. O. Box 9, Charleston, IL 61920

ILRE1

NEW WONDER-FORMULA—HAILED ON NETWORK TV!

PEELS OFF PAINT JUST LIKE PAPER!

LIFTS • PEELS • STRIPS AWAY UP TO 18 COATS OF PAINT WITH ONE SINGLE 60-SECOND APPLICATION!

- Simply apply—let dry—peel away paint like paper in one single action
- Ends sanding—scraping—spraying—chipping—steel-wool FOREVER!
- Amazing European discovery turns layers of paint to a single sheet of 'paper' so it peels away just like you'd lift and turn the pages of a book!

WORKS ON ANY SURFACE . . . WOOD, BRICK, METAL, PLASTER, GLASS, STONE, ANTIQUES!

Amazing new formula actually penetrates old paint (varnish and lacquer, too), in minutes. Transforms it into a soft, plastic-like film. Then simply let set . . . lift, roll, strip up to 18 coats of paint away in a single peel-away action! Yes, years of built-up paint peel away as quick and easy as you'd turn this very page! Ends sanding, scraping, chipping and foul-smelling chemicals ONCE AND FOR ALL!

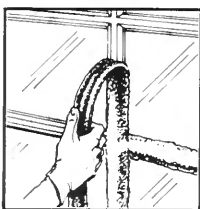
There's no dust up. No clean up. Just a single peel-away action restores the bare, original finish . . . good as new in a flash!

SO EASY EVEN A CHILD CAN DO IT!

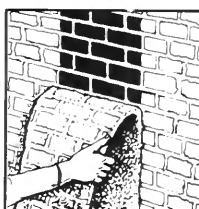
Called 'Peel-Away', this new wonder-formula has been officially registered with Gov't. patent offices throughout the World. It is completely odorless—completely safe! Reacts only with paint, varnish, lacquer or shellac . . . nothing else! So you can use it on even finest furniture, precious art frames, why even delicate wicker or valuable painted-over marble. In fact, it is so safe, so gentle, it is used by London's British Museum and world-famous art galleries to strip old art frames and century-old paneling. Even used by antique dealers to strip down priceless furniture treasures for restoration. Yes, 'PEEL-AWAY' literally lifts away every last layer of old paint even from hard-to-get-at places such as impossible-to-reach windowpane corners . . . grooved molding . . . finely tooled woodwork, etc., etc.

SIMPLY COAT IT ON—SEE IT TURN PAINT TO "PAPER" IN JUST MINUTES . . . AND PEEL IT AWAY IN A SINGLE LIFT-OFF-ACTION!

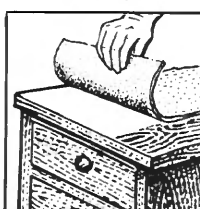
WINDOWS



WALLS & BRICK



FURNITURE



ENDS: • sanding • scraping • spraying • chipping • steel wool • toxic chemicals FOREVER!

Removes years of built-up paint . . . WITH JUST A FEW MINUTES WORK!

AGENTS, REPS, BULK USERS, NOTE: Case lot orders are now available. Write on your letterhead to our industrial division for wholesale prices.

PEEL AWAY UP TO 18 COATS OF PAINT AT A TIME!



Best of all this new wonder-formula is so easy to use. Simply mix with water and coat onto any painted surface. Then press down special 'Peel-Away' magic-fibre Lift-tex strip-away cloth, (included free) . . . let dry and adhere to surface . . . and without even dirtying your hands, lift away old paint, just like you'd peel a banana. It is as simple and easy as that. No mess. No fuss. No odor. Old paint lifts away like a single sheet of paper. Original bare-wood finish comes through like new again.

SO ECONOMICAL TOO! MERE PENNIES PER JOB! AND THE PEEL-AWAY MAGIC-FIBRE CLOTH IS COMPLETELY RE-USABLE, GOOD FOR YEARS TO COME!

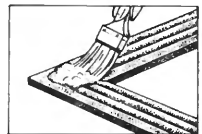
Peel-Away is every home-owners dream come true. Ideal for indoors on walls, windows, furniture, etc.—plus 101 outdoor uses too. And it costs only a little more than a penny per foot coverage. Homeowner's size alone gives enough coverage to strip away as much as 500 to 750 feet of wall and door trim, window frames, furniture molding, stair railing, patio furniture, roof-gutters . . . its uses are almost endless.

SAVES WORK, SAVES TIME, SAVES MONEY . . . MAKES TAKING OFF PAINT EVEN EASIER THAN PUTTING IT ON!

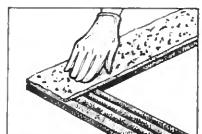
So for the new low-cost, super-fast way to peel away old paint . . . lift away old lacquer, varnish and shellac . . . order PEEL-AWAY today on full money-back guarantee. REMEMBER: You must be able to simply coat . . . peel . . . lift and strip away up to 18 layers of old paint in a single peel-away action . . . without sanding, scraping, chipping or steel wool . . . or purchase price refunded in full. Order today.

© 1982, Brand Name Testing, Inc.

CLEAR & FREE 1-2-3!



STEP 1: Simply coat 'Peel-Away' wonder-formula over old, encrusted paint; (up to 18 layers thick)—



STEP 2: Cover treated area with magic-fibre 'Lift-tex' stripper-cloth, (included FREE). Let set and adhere to coated surface.



STEP 3: Right before your eyes paint turns to "paper" . . . lifts, peels, strips away IN A FLASH!

MAIL NO-RISK COUPON TODAY

Dumond Chemicals, Dept. PWWB-282, Dumond Place, Glen Head, New York 11545

Please RUSH me the quantity of the "PEEL AWAY" New Wonder Formula checked below. If I am not completely satisfied with the way it "peels away" up to 18 coats of paint with just one single application, I may return for a full refund (less postage and handling, of course.)

CHECK OFFER DESIRED

- Small Size (enough for up to 3-room apartment) only \$9.95 plus \$2 postage & handling.
- Homeowner Size (enough for regular size homes) only \$16.90 plus \$3 postage & handling. **YOU SAVE \$4.00!**
- Handyman's Super-Size (enough for use in homes with extensive outside trim) only \$31.95 plus \$4 postage & handling. **YOU SAVE \$11.85!**

Amount enclosed \$ _____ (NY residents please add sales tax) No C.O.D.'s please.

CHARGE IT! (\$15 minimum charge) VISA MasterCard

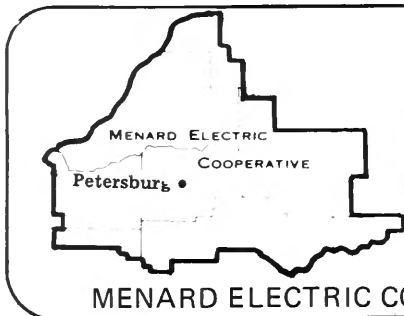
Credit Card # _____ Exp. Date _____

Name _____

Address _____

City _____ State _____ Zip _____

Div. Brand Name Testing, Inc.



Menard Electric News

MENARD ELECTRIC COOPERATIVE 217-632-7746 PETERSBURG, ILLINOIS 62675

Benefits of meter reading

General response from members regarding the recently announced meter reading program has been favorable. A few have contacted us regarding special situations that must be recognized and adjustments may be necessary to accommodate. We are most grateful to those who are assisting with their comments. Several members have written, expressing concern with the soon-to-be-implemented meter reading program because of the cost involved. Possibly the following will speak to concerns and/or questions which many members might have.

While we realize it is difficult to believe that savings will be greater than the expense of the meter reading program, it will in effect create a savings to all members. This is the ultimate benefit to everyone.

During the course of the year, by using meter readers your Cooperative will be able to move the collection for energy used closer to its time of use by shortening the interval by 20 to 21 days. Since our average wholesale power purchased each month in 1983 is estimated to be approximately \$516,800, by using eight percent as the value of money for 20 days each month, this savings will amount to in excess of \$27,000 per year. This one advantage in itself, will pay for nearly 70 percent of the cost related to a meter reading program.

Any savings that your Cooperative can initiate in reducing the expense of operations has a direct effect in the cost of electricity to all consumers, and on your behalf we are trying to reduce the cost of providing service whenever practical, in an effort to stem the ever increasing cost of electricity.

The second important reason for a

meter reading program relates to line loss. Line loss is the difference between the power the Cooperative purchases and sells. This loss is experienced by all power suppliers and normally ranges from approximately eight to 11 percent. Expensive special equipment is used to assist in keeping line loss to a minimum. We work very

Meter accessibility

Although the Cooperative policy on accessibility of property for construction, repair, maintenance, etc. has not changed, perhaps it should be reviewed generally in order that all necessary arrangements can be made so meter readers can effectively do their job beginning in April of this year.

It has always been a standing requirement that all facilities of the Cooperative be available for necessary operating requirements. This includes the accessibility of meters. Over the years some meters have been enclosed on porches and inside of houses as well as fenced within locked gates and now that it is necessary they be visited each month, the Cooperative respectfully requests that any member with a meter that is inaccessible to meter readers immediately notify the Cooperative in order that we can give assistance and advice in making these meters available to meter readers.

We regret this may be an inconvenience to some of our members, however, it is imperative that the necessary arrangements be made prior to April 1st.

hard to keep it as low as possible since one-half percent is worth about \$50,000 per year.

With the new program, meters failing to function will be detected substantially earlier than presently and at least every 30 days an inspection will be made. Metering equipment and meter seals in place will be observed 12 times annually. Line loss can more nearly correlate to substation metering dates by having all the meters read within a concentrated three day period. Any condition that prevents the Cooperative from collecting payment for electricity that passes through the system is considered line loss, and any action to prevent this loss will benefit members. Under a meter reading program, we believe that the reduction of line loss by one-half of a percentage point or more might be possible. Think of the savings from this alone.

The estimated annual cost for a meter reading program is approximately \$38,000. As you can see, this amount is more than offset in our explanation above.

Another important benefit of a meter reading program deals with disconnection of services for non-payment. When it becomes necessary to disconnect services for non-payment, this action can be taken at least 20 days earlier than can be done currently, thus saving the Cooperative the loss incurred during those 20 days and will in effect, reduce the delinquencies that become uncollectible, all of which is a direct savings to each Cooperative member.

In the February issue of the *IREN*, other advantages of such a program were spoken of, all of which will reflect better utilization of employees'

A calendar of events for meter reading program

Dorland W. Smith of Havana completed 25 years of service on February 17. After spending several years as power use advisor, Dorland is currently staff assistant.

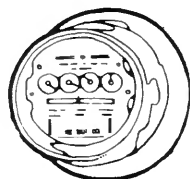
Mr. and Mrs. Morris Bell of Chandlerville celebrated their 35th wedding anniversary on March 14. Morris is the president of the board of directors of your Cooperative.

Would you like to pay the same amount each month all year for your energy bill, regardless of what the actual bill is? You can, if you select our monthly budget plan.

The proper time to begin our Budget Billing is fast approaching, as we believe June is the month most practical to institute Budget Billing.

Your electric cooperative has offered the Budget Billing plan for many years. It has mostly been used by those members having all-electric homes, but it is available to almost everyone, regardless of how you heat or cool. Should you be interested in the Budget Billing, please contact the Cooperative office.

Meter readers will begin reading meters on April 14. We are sure that those selected will need your help, particularly if your dog is kept outside and doesn't like strangers. If you have a guard dog that is unfriendly, would you please let the Cooperative know so that necessary arrangements can be worked out with the meter reader selected for your area. We work for you, and it is in your best interest to get our job done quickly and safely. Please drop us a note with your account number and phone number so that we might communicate with you.



As we enter into a meter reading program and move the normal billing date to the end of the month, the following calendar for 1983, setting forth the various dates of events tentatively scheduled, is submitted so as to better inform you of the upcoming dates.

- March 21, 1983 — normal billing and meter reading submitted by the members on the stub of the bill will be used for the April 21 billing.
- March 28 & 29 — action on delinquent February 21 billing
- April 14, 15 & 16 — the initial procurement of meter readings by the meter readers with the readings to be utilized in the additional billing which will be rendered on May 9
- April 21 — normal April billing (from March 21 meter readings)
- April 25 & 26 — action on delinquent March 21st billing
- May 9 — billing for 25-day period from March 21 to April meter reading by meter readers, and in addition May 9 to 11, meter readers will be securing their second reading to be used on the May 30 billing
- May 30 & 31 — billing date changed from the 21st to the end of the month representing a 25-day period from April 14 to May 9; action on delinquent April 21 billing
- June 13, 14 & 15 — meter readers secure readings
- June 13 & 14 — action on delinquent May 9 billing
- June 30 — June billing for approximately 35 days of service
- July 13, 14 & 15 — meter readers secure readings
- July 5 & 6 — action on delinquent May 31 billing
- July 30 — July billing (approximately 30-day period)
- Aug. 2 & 3 — action on delinquent June 30 billing
- Aug. 15, 16 & 17 — meter readers secure readings
- Aug. 30 — August billing (approximately 33 days of service)
- Sept. 6 & 7 — action on delinquent July 31 billing
- Sept. 17, 19 & 20 — meter readers secure readings
- Sept. 30 — September billing (30 days)
- Oct. 5 & 6 — action on delinquent August 30 billing
- Oct. 19, 20 & 21 — meter readers secure readings
- Oct. 31 — October billing (31 days)
- Nov. 2 & 3 — action on delinquent September 30 billing
- Nov. 18, 19 & 21 — meter readers secure readings
- Nov. 30 — November billing (approximately 29 days)
- Dec. 5 & 6 — action on delinquent October 31st billing
- Dec. 19, 20 & 21 — meter readers secure readings
- Dec. 30 — December billing (30 days)
- Jan. 3, 4, 1984 — action on delinquent November 30 billing

While the meter reading dates have been established, along with dates of billing, the above collection dates may vary from a two to three day period during the balance of the year.

Once the meter reading program has been implemented and allowed to function with regularity, we believe that a healthier and more viable rural electric cooperative will exist, dedicated to providing our membership with essential service of electricity at as low a cost as possible.

time and/or a dollar savings to the Cooperative membership.

Obviously, there are disadvantages to implementing a meter reading program, and an adjoining article

speaks to the dog problem. Inclement weather, altering of the billing dates, and the feeling that the Cooperative no longer trusts the members are problems which must be overcome.

Many of these exist today with our regular employees on a day-to-day basis. No doubt they can be dealt with effectively as other power suppliers do.

MAIL THIS MONEY-SAVING COUPON



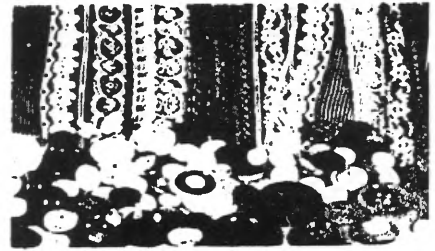
100 GLADIOLUS BULBS

only \$1.00 If you send this Coupon NOW you can get 100 GLADIOLUS Bulbs for only a penny a bulb! These bulbs from the fertile fields of Michigan will produce a rainbow of blooms in stunning reds, blues, yellows, pinks, purples, whites, crimson, violet and multi-color. These bulbs are small, blooming varieties already 1 to 1½ in. circumference. Will produce many blooms this season and full normal blooms many years thereafter. Any bulb not flowering five years will be replaced. Act now to get these wonderful bulbs in time for spring planting. Send today only \$1.00 plus 40c towards postage and handling. Satisfaction guaranteed or return for full refund!

100 Glads, \$1.00 200 Glads, \$1.95

PRINT NAME _____
 ADDRESS _____
 CITY _____ STATE _____ ZIP _____

ROCKWOOD GARDENS, Dept. GX-144, 1950 Waldorf, Grand Rapids, Mich. 49550

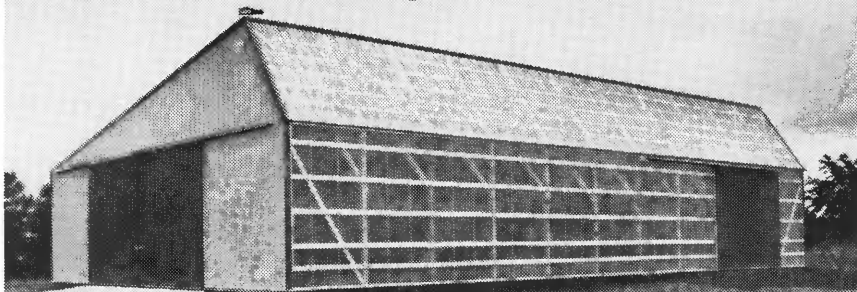


40 YARDS LACE \$1.75

LACE — LACE — LACE . . . 40 yards of Lace in delightful patterns. Edgings, Insertions, etc. Assorted beautiful designs, colors and widths. Pieces at least 10 yards in length—none smaller. Marvellous for dresses, pillow cases, etc. Terrific as hem facing. **Only \$1.75** or double orders **\$3.35**. 3 orders just **\$4.95**. Pts. include 50¢ pstg. and hding with EACH set of 40 yards you buy. Satisfaction guaranteed! **FREE** with lace **50 BUTTONS!** 50 New, High Quality Buttons. Assorted colors, sizes and shapes. Sent **FREE** with each lace order. Please allow up to 6 weeks for delivery.

LACE LADY 1602 Locust St. DEPT. LB-892 St. Louis, Mo. 63103

Wick Buildings can put the right INvironment in your environment



Quality Engineering • Quality Materials • Quality Completion

- A wide range of agricultural buildings
- Solar buildings
- Horse barns
- Livestock confinement buildings
- Commercial and specialty buildings
- Exclusive Country Gentleman design



Wick Buildings®

A product of Wick Building Systems, Inc.
 ...offering the solar advantage!
 Mazomanie, WI 53560 • Adair, IA 50002

For new building design and pricing information, call your nearest Wick Buildings dealer listed below or phone toll free 1-800-356-9682, weekdays

(In Wisconsin call 1-800-362-5457)

ILLINOIS

- Abingdon..... Lyle Roberts • 309-462-2928
 Arthur Enos Helmuth & Sons • 217-543-2298
 Ashton Consol Builders & Supply • 815-453-2442
 Carlisleville Donald Bacon • 217-627-2297
 Carrollton..... Jim Parkinson • 618-576-2287
 Danville Carl Wise • 217-776-2462
 Effingham..... Curtis-Jansen • 217-342-2159
 Eureka Dan Wiegand, Jr. • 309-467-4527
 Hardin Bill Parkinson • 618-576-2287
 Highland Curtis-Jansen • 618-654-9807
 Lawrenceville..... Darrell Fisher • 618-928-2605
 Lena..... Freeport Builders • 815-563-4211
 Lindenhurst..... Don Jackson • 312-356-1004
 Lyndon Dale Woodworth • 815-778-4469
 Marlon Glenn Hudgens • 618-993-5560

- Mason City..... W.A. Grandy Co./ Ken & Jerry Harnacke • 217-445-2481
 Mazon J.R. Enterprises • 815-448-2406
 Metropolis..... Koch Brothers Builders 618-524-4565
 Monmouth Phil Britt • 309-734-6458
 Paris Wilson Contracting • 217-275-3411
 Princeville..... Paul Streitmatter • 309-385-4848
 Royalton..... Robert Smith • 618-984-4470
 Spring Valley . Maloolley Brothers • 815-664-2353
 Wataga..... Harold Bramlett • 309-375-6470
 Waterman..... Little Enterprises • 815-264-3302
 West Salem..... George's Farm Supply 618-456-8461
WISCONSIN
 Genoa City Chuck Schuren 414-279-5424 or 815-895-9218

Dentures



Total Cost For Both Upper & Lower Dentures

- Write for free details
- High Quality at Budget Prices
- In by 10 a.m.; out that same afternoon with your new dentures
- Fitted by Licensed Dentists
- We will process insurance and Medicaid forms
- Complete dental services offered.

We'll meet your bus, make your motel reservations,

Free hookup if you come by recreational vehicle!

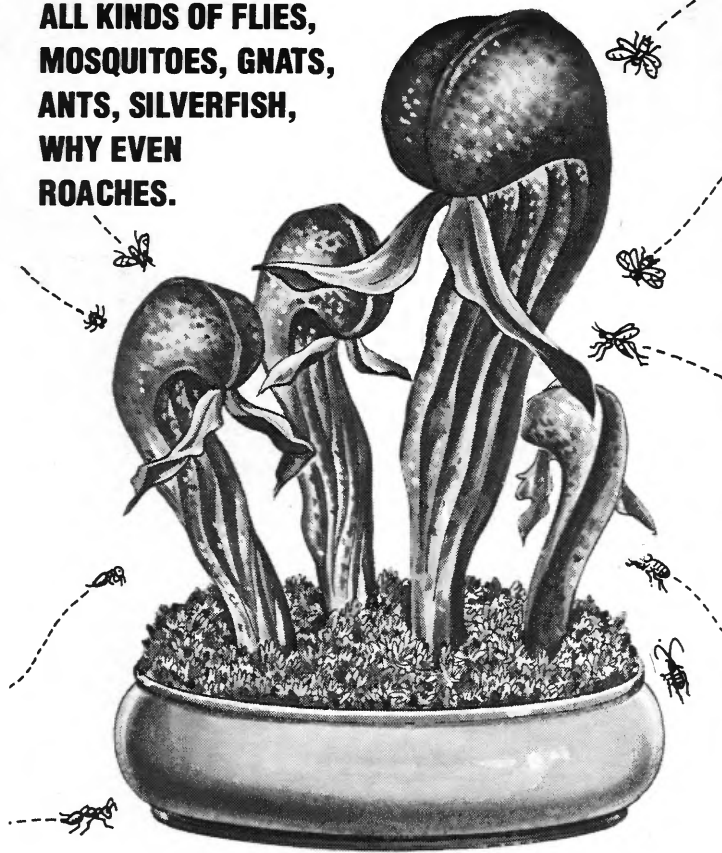
Please call for an appointment

Frederick C. Lauer DDS
 Mid-America
 Denture Clinic

Bus. Loop I-44 West, Rt. 3, Box 19C
 Mt. Vernon, Mo. 65712
 (417) 466-7196

our patients now number in the thousands...all the way from Maine to California, Canada to South America, Florida to Washington.

**TRAPS AND DEVOURS
ALL KINDS OF FLIES,
MOSQUITOES, GNATS,
ANTS, SILVERFISH,
WHY EVEN
ROACHES.**



**AMAZING
KING COBRA
LILY** King Cobra Lily®
Chirsamphora Californica



**DRAWS
INSECTS
RIGHT
OUT OF
THE AIR!**

**Off Walls—Even Off the
Floor! Helps Rid Your Home
of Insects—Pests
ALL YEAR 'ROUND**

**GIVES OFF AN INVISIBLE HONEY-SCENT, INSECTS
FIND IMPOSSIBLE TO RESIST! TRAPS THEM ON
CONTACT, THEN KILLS THEM DEAD!**

Imagine if you can, one of the world's most breathtakingly beautiful house-plants . . . that to human eyes looks like a giant "flower show" Tropical Lily—but to insects that are unlucky enough to come near it, spells SURE, CERTAIN DEATH!

Yes, a wonder of nature that not only erupts with lavish displays of beautiful golden spring blooms . . . as it lines itself up like a squad of insect destroying sentries, mammoth heads on the constant alert against flying, crawling creeping insects that dare to invade your room and set foot near it.

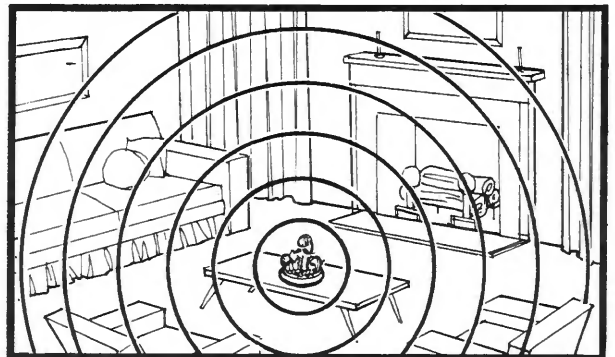
This is the 'double-wonder' that awaits you when your plant stands with its glorious trumpet of bloom . . . these Lavender King Cobra Lillies. Each and every plant grows so spectacular in size, so dazzling in beauty that a single giant-size bloom makes a corsage by itself . . . and just 3 or 4 plants transform an entire windowsill into a South Sea Island paradise . . . ever "on the lookout" for crawling and flying pests!

**BEST OF ALL—NEEDS NO SPECIAL NUTRIENTS BECAUSE IT FEEDS AND
NOURISHES ITSELF . . . ON INSECTS!**

Truly a conversation-piece all by itself . . . plus a fascinating educational experience for both children and adults, too. Because there is simply no other plant in all of nature that gives you such TOTAL eye-stopping beauty PLUS anti-insect protection.

To put it simply, it is bound to leave your friends, family and house-guests absolutely spellbound . . . not only with its uncanny ability to lure and attract flying and crawling pests . . . trap them . . . digest them . . . and help keep an entire area insect-free ALL YEAR 'ROUND!

**BUT SUPPLIES ARE STILL SORELY LIMITED—WE MAY NOT BE ABLE
TO REPEAT THIS OFFER THIS YEAR—ACT NOW!**



**ONE SINGLE PLANT PROTECTS AND
DESTROYS YEAR AFTER YEAR AFTER YEAR.**

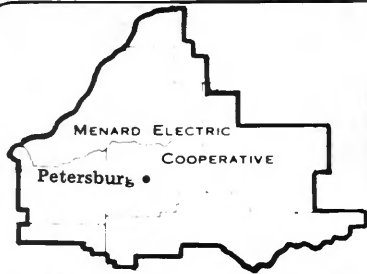
**KING COBRA, Dept. CLBA—52
Roberts Lane, Glen Head, NY 11545**

YES, please rush me the amazing KING COBRA plant that traps and devours all kinds of creeping, crawling insects year after year. I must be pleased and delighted in every way or you will refund the full purchase price (less postage and handling of course) without question.

- 1 King Cobra Plant only \$3.95 plus 75¢ postage & handling.
 - 2 King Cobra Plants only \$6.95 plus \$1.25 postage & handling.
- PLANT LOVERS DISCOUNT special—
- 3 King Cobra Plants only \$9.95 plus \$1.50 postage & handling. YOU SAVE \$2.65!
 - 6 King Cobra Plants only \$17.98 plus \$2.00 postage & handling. YOU SAVE OVER \$8.00!
 - 12 King Cobra Plants only \$32.95 plus \$3.00 postage & handling. YOU SAVE OVER \$20.00!

Total amount enclosed \$ _____ (N.Y. Residents add sales tax)
No C.O.D.'s please.

NAME _____
Address _____
City _____ State _____ Zip _____



Menard Electric News

MENARD ELECTRIC COOPERATIVE 217-632-7746 PETERSBURG, ILLINOIS 62675

Co-op Comments

David Crosnoe, System Engineer for your Cooperative, will complete 10 years of service on April 23.

Suzanne Freeland, Data Input Operator for your Cooperative, completed five years of service on April 10.

Mr. and Mrs. Gene McGee of Petersburg will celebrate their 20th wedding anniversary on April 27. Darlene is a Clerk in your Cooperative office in Petersburg.

ANNUAL MEETING JUNE 4

The Annual meeting of your Cooperative will be held at PORTA High School on Saturday, June 4, beginning at 6:30 p.m. Why not mark your calendar now and reserve that date to participate in the 46th Annual Meeting of Menard Electric Cooperative?

As you read this article, Area Meter Readers will be completing their first visit to all meters in the Cooperative service area.

The participation and cooperation of the Cooperative membership has been outstanding. A few special situations remain to be ironed out, however, the Meter Reading Program has moved forward rapidly with the cooperation of the Meter Readers and the Cooperative membership. Again, we appreciate very much your patience and cooperation as this program is implemented.

Conserve-A-Tip

You can save nickels and dimes turning off lights in your home . . . but you can save dollars conserving the big three: heating, cooling and water heating. They account for three-fourths of your energy bill.

In Memoriam

Mrs. Evalena A. Borchert, 303 W. Lincoln, Petersburg, died Sunday, March 20, at 10:00 a.m. at St. John's Hospital, Springfield. She was 69 years of age.

Evalena was first employed by your Cooperative on December 13, 1943, and she often pointed out she agreed to work for a short time, although not on a steady basis. That part-time job extended for over 36 years. During her tenure, Evalena worked for each of the three Cooperative managers who have led the Cooperative since its organization in 1936.

Mrs. Borchert is survived by her husband, Paul, one brother, Walter Seay of Laguna Hills, California, several nieces and nephews and was preceded in death by her parents, one sister and two brothers.

Services were held at 10:30 a.m. on Wednesday, March 23, at the First Baptist Church in Petersburg and



Evalena Borchert

burial was in Oakland Cemetery.

Our deepest sympathy is extended to Paul and Evalena's many friends.

What is a grandmother?

"A Grandmother is a lady who has no children of her own: She likes other people's little girls. A Grandfather is a man grandmother. He goes for walks with the boys and they talk about fishing and tractors, and like that.

"Grandmas don't have to do anything except be there. They're old, so they shouldn't play hard or run. It is enough if they drive us to the market where the pretend horse is, and have lots of coins ready. Or, if they take us for walks, they should slow down past things like leaves or caterpillars. They should never say "hurry up."

"Usually they are fat but not too fat to tie your shoes. They wear glasses

and funny underwear. They can take their teeth and gums off.

"It is better if they don't typewrite or play cards, except with us. They don't have to be smart, only answer questions like, "Why do dogs hate cats," and 'How come God isn't married?'

"They don't talk baby talk like visitors do because it is hard to understand. When they read to us they don't skip or mind if it is the same story again.

"Everybody should try to have one, especially if you don't have television, because grandmas are the only grown-ups who have time."

Inheriting the wind

Tornadoes strike Illinois during all months. In an average year, nine tornadoes will strike Illinois. Statistics from previous years indicate most of these will hit between March and June; however, the week of April 15-21 is the prime week for their occurrence. Strangely enough, the week prior to this has the lowest frequency of these types of storms than any week during the months of March through June. Illinois is eighth among states in number of tornadoes per year. Due to our population concentration, we rank first in the number of deaths and second in total damages.

Twisters may hit any part of the state, but an area of tornado high frequency, described by some as a "tornado alley" exists from Missouri through the counties of Madison, St. Clair, Monroe and Randolph and sweeps northeast through the state into the northeast corner of Illinois. (See the map).

Tornadoes are known in many shapes from the funnel-shaped tornado of Wizard of Oz fame, to some who resemble ropes which dance and flutter. Others are seen moving in the clouds, and not at ground level. These

may be creating havoc on the ground, but simply not picking up visible debris. The Great Tri-State Tornado of 1925 looked like a dark, menacing thunderstorm until it hit; the first and only warning being a loud "whoosh."

There are three types of tornadoes, according to the Atmospheric Sciences Section of the Illinois Water Survey. Small tornadoes with diameters of tens of yards and ground paths of 1-2 miles. This type appear as "dancing ropes." Medium-sized tornadoes with diameters of 100-300 yards and a path of 5-15 miles will often appear as the traditional funnel and are potentially quite destructive. Large tornadoes with diameters of 1/2 to 1 1/2 miles and a path of up to 150 miles have funnels so large that they are seldom identifiable as a funnel. They account for only one percent of all tornadoes, but cause 20 percent of all damage in the U.S. Most tornadoes are connected to the southwest corner of a thunderstorm cloud which is usually moving from southwest to northeast and because of this, a thunderstorm may have moved to the north of a site before its twister strikes.

Predicting the time of occurrence by past performance, it seems that 40 percent of all tornadoes in Illinois occur from 3-6 p.m.; 70 percent occur 2-8 p.m. According to these facts, 15-20 percent of tornadoes will strike during the dark of night.

Tornado watch and tornado warning are not the same thing:

TORNADO WATCH: Informs public that conditions are favorable and probabilities highest for this type of storm.

TORNADO WARNING: Tells us a tornado has been sighted and we should seek shelter.

Where you are when a tornado warning is sounded determines what safety measures you may incorporate. Some general guidelines provided by the U. S. Department of Commerce, National Oceanic and Atmospheric Administration, and the National Weather Service include:



ME

IN HOMES: The basement offers the greatest safety. Seek shelter under sturdy furniture if possible. In homes without basements, take cover in the center part of the house on the lowest floor and in a small room or closet. Keep some windows open, but stay away from them.

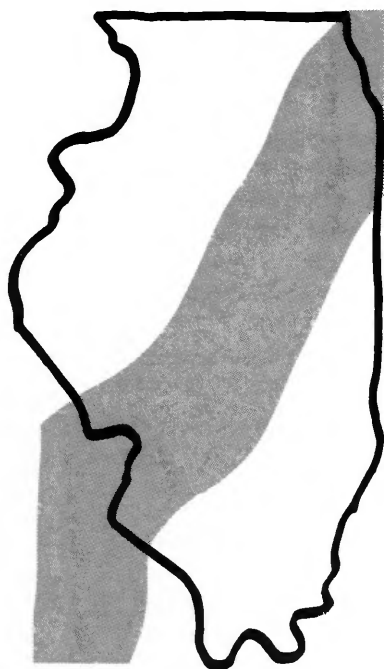
IN MOBILE HOMES: Mobile homes are particularly vulnerable to destructive winds. Proper tie-downs to prevent overturning will minimize damage. There should be a designated community shelter where mobile home residents can assemble during a warning. If there is no such shelter, do not stay in a mobile home during a tornado warning.

IN OPEN COUNTRY: If there is no time to find suitable shelter, lie flat in the nearest depression such as a ditch or ravine.

IN OFFICE BUILDING: Go to an interior hallway on the lowest floor, or to the designated shelter area.

If a warning occurs while you are shopping, seek shelter inside a solidly built building. Avoid buildings with a wide free-span roof. Do NOT attempt a mad dash to your parked car.

During unsettled weather, do not call your weather bureau except to report a tornado sighting. Following a storm, beware of structural damage in buildings, electrical hazards and fire hazards such as gas or oil leaks and broken electrical wires.



'Tornado Alley' - Areas most commonly raked by tornadoes in Illinois.

“I can show you why a genuine Bonanza Building is the best buy for your budget.”



BONANZA BUILDINGS

Mr. Ken Ruegsegger
West Liberty Builders
West Liberty, Iowa



Builder territories available in a few selected areas.

I can show you this value because I build what I sell — the genuine Bonanza building.

There's a Bonanza Builder near you who can show you how you can get the best value for your dollar in farm, horse barn or commercial buildings.

Call today or send us the coupon.
Call Toll Free 1-800-637-2046
From Illinois Call 1-800-252-5735

Have the nearest Bonanza Builder contact me.

NAME: _____

ADDRESS: _____ PHONE: _____

COUNTY: _____ TOWN: _____

STATE: _____ ZIP: _____

I'm interested in: Machine/Storage Utility Garage
 Hog Horse Dairy Beef Business

Bonanza Buildings, Inc.
P. O. Box 9, Charleston, IL 61920

ILRE1

energy efficiency

too, but it will not do as good a job as groundwater, because the temperature fluctuates. Still, using an existing pond may be a better bet than drilling a new well or two.

For those not fortunate enough to have a good water supply, there is yet another alternative, but its attractiveness is somewhat dampened by its fairly stiff initial cost. It is called a "closed loop earth-coupled system," and it involves laying a large grid of plastic piping about six feet underground, where the temperature remains fairly constant all year long.

After filling the loop with water, you connect your water-to-air heat pump in the usual way. The earth's insulating properties take over from there, providing a home-grown source of even-temperature "groundwater," even when the winter winds are howling outside.

About 20,000 of the systems are perking away, mostly in Canada, Sweden and Germany, and there is no great hurdle to making them work here, too, except the initial cost. You will need to buy about 400-500 feet of pipe for each ton of air-conditioning capacity on the cooling side of your heat pump. The average 1,500-square-foot home, incidentally will have about a two-ton unit.

After swallowing the initial cost, you have a system capable of providing years of relatively low-cost heating and cooling.

To summarize, a heat pump is a good way to heat and cool your home with one unit, and a water-to-air heat pump is better yet, because of increased efficiency.

A study performed in early 1982 showed that for a home requiring 100-million British thermal units (Btu's), a groundwater heat pump cost only \$3.59 more to heat for a winter than a well-maintained natural gas furnace with spark ignition and an automatic flue damper. To heat the same home with a propane furnace

To: **A. I. E. C. Publications**
P. O. Box 3787
Springfield, Illinois 62708

Please mail me _____ copies of the publication
"Home Weatherization"
 (For each copy, enclose \$2.00 to cover the cost of the book and pay postage and handling.)

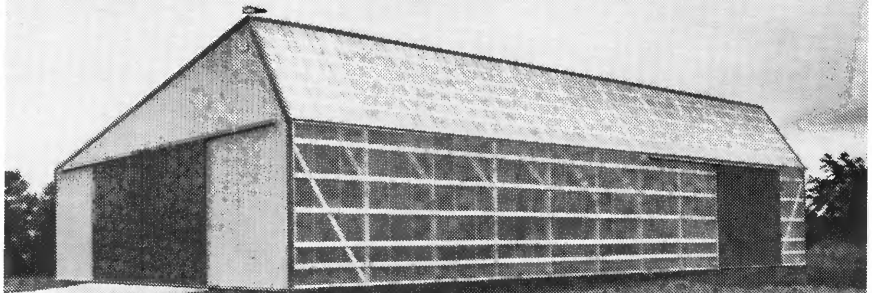
Please Print Name _____

Mailing Address _____

City _____ State _____ Zip _____

giving 75 percent efficiency would cost \$477 more than the water-to-air heat pump, and a fuel oil furnace would have burned \$573 more of your dollars than a groundwater heat pump.

Wick Buildings can put the right Environment in your environment



Quality Engineering • Quality Materials • Quality Completion

- A wide range of agricultural buildings
- Solar buildings
- Horse barns
- Livestock confinement buildings
- Commercial and specialty buildings
- Exclusive Country Gentleman design



Wick Buildings®

A product of Wick Building Systems, Inc.
 ...offering the solar advantage!

Mazomanie, WI 53560 • Adair, IA 50002

For new building design and pricing information, call your nearest Wick Buildings dealer listed below or phone toll free 1-800-356-9682, weekdays

(In Wisconsin call 1-800-362-5457)

ILLINOIS

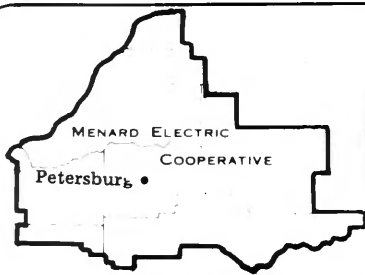
Abingdon..... Lyle Roberts • 309-462-3928
Arthur Enos Helmuth & Sons • 217-543-2298
Ashton Consol Builders & Supply • 815-453-2442
Carlinville Donald Bacon • 217-627-2297
Carrollton..... Jim Parkinson • 618-576-2287
Danville..... Carl Wise • 217-776-2462
Effingham..... Curtis-Jansen • 217-342-2159
Eureka..... Dan Wiegand, Jr. • 309-467-4527
Hardin Bill Parkinson • 618-576-2287
Highland Curtis-Jansen • 618-654-9807
Lena..... Freeport Builders • 815-563-4211
Lindenhurst..... Don Jackson • 312-356-1004
Lyndon Dale Woodworth • 815-778-4469
Marion Glenn Hudgens • 618-993-5560

Mason City..... W.A. Grandy Co./ Ken & Jerry Harnacke • 217-445-2481
Mazon J.R. Enterprises • 815-448-2406
Metropolis..... Koch Brothers Builders 618-524-4565
Monmouth Phil Britt • 309-734-6458
Paris Wilson Contracting • 217-275-3411
Princeville..... Paul Streitmatter • 309-385-4848
Royalton..... Robert Smith • 618-984-4470
Spring Valley . Malooley Brothers • 815-664-2353
Wataga..... Harold Bramlett • 309-375-6470
Waterman..... Little Enterprises • 815-264-3302
West Salem..... George's Farm Supply 618-456-8461

WISCONSIN

Genoa City Chuck Schuren 414-279-5424 or 815-895-9218

Selected dealer territories available. Contact: Wick Buildings, Mazomanie, WI 53560



Menard Electric News

MENARD ELECTRIC COOPERATIVE 217-632-7746 PETERSBURG, ILLINOIS 62675

Co-op Comments

ANNUAL MEETING JUNE 4

The 46th Annual Meeting of your Cooperative will be held on Saturday, June 4th, at PORTA High School. A free pork chop dinner will be served beginning at 5 p.m. and the business session will begin promptly at 6:30 p.m.

All Cooperative members are encouraged to attend the annual business session of your Cooperative. The Official Notice of the meeting was included in the energy billing, mailed on May 9th. Should you be unable to attend the Annual Meeting, we would appreciate your submitting the proxy that was a part of the Official Notice, as soon as possible.

In addition to the business session, entertainment will be provided along with several attendance prizes which will be given away at the conclusion of the Annual Meeting.

We look forward to seeing you at the 46th meeting of your Cooperative.

Edward Rogers, of Virginia, completed 25 years of service on June 2. Ed is the area serviceman in the Beardstown-Virginia-Ashland-Alexander and Litterberry areas.

Mr. and Mrs. Randolph J. Avery of rural Petersburg, celebrated their 10th wedding anniversary on June 8th. Randy is a journeyman-lineman and works on the line crew out of the Petersburg warehouse.

Robert F. Zook, rural Athens, completed 20 years of service as a director of your Cooperative, on March 9th.

CHANGE IN BILLING DATE

The energy bill received on or about May 9th, was to meter readings

secured by the meter readers on their first outing, which was April 14, 15, and 16th. On May 9, 10, and 11, meter readers again secured readings which will be utilized on a bill which will be mailed on or about May 31st. Henceforth, the billing date will be the last day of each month.

Energy bills are due and payable upon receipt and are not considered delinquent until after 21 days from the date of the bill. Due to the change in billing dates, members may have had an arrears shown on their May 9th billing. Should this have occurred, please deduct the arrears amount from the May 9th bill if you have paid the

total amount of the April 21st billing. This same situation may well occur on the May 31st billing, due to overlapping of the 21 day grace period.

Should you have questions with reference to the above, please do not hesitate to contact the Cooperative office.

Your cooperation in assisting the meter readers on a monthly basis will be appreciated. Should you have guard dogs or locked gates, please make arrangements for our meter readers to accomplish their mission with the least possible delay and without personal injury to themselves.

Operations of Your Cooperative

Article I, Section 1 of the by-laws provide that any person or firm may become a member of the Cooperative by making a written application agreeing to purchase electricity from it and to be bound by the Articles of Incorporation and by-laws, and paying a membership fee. Husbands and wives may obtain a joint membership but no person or firm may have more than one membership.

Article III of the by-laws of Menard Electric Cooperative requires that a meeting of the members of the Cooperative be held once a year for the purpose of electing Directors and to transact other appropriate business. Each member is entitled to one vote. Husbands and wives who are joint members are entitled to cast only one vote. Five percent of the members entitled to vote, present in person or by proxy, shall constitute a quorum.

Article IV of the by-laws of your Cooperative set forth the Election and Tenure, Qualifications, and Nominations of Directors by certain geographical areas as follows:

ARTICLE IV

BOARD OF DIRECTORS

SECTION 1. GENERAL POWERS. The business and affairs of the Cooperative shall be managed by a Board of Directors consisting of nine members which shall exercise all of the powers of the Cooperative except such as are by law, the articles of incorporation or these by-laws conferred upon or reserved to the members and from time to time fix rates for service rendered by the Cooperative.

SECTION 2. ELECTION AND TENURE. Three directors shall be elected each year, by and from the membership, except in case of vacancies and to serve for a term of three (3) years or until their successors shall have been elected and shall have qualified. If an election of directors shall not be held on the day designated herein for the annual meeting or at any adjournment thereof, a special meeting of the members shall be held for the purpose of electing directors within a reasonable time thereafter.

Directors to be elected at said annual or special meeting shall be selected so that at all times one of such directors shall be a resident of each of the districts described as follows:

DISTRICT NO. 1 — All that area of the Cooperative in Range 7 West of the 3rd P.M. lying South of the division line between Township 17 North and Township 18 North and all of that area of the Cooperative in Ranges 5 and 6 West of 3rd P.M. lying West and South of the Sangamon River.

DISTRICT NO. 2 — All that area of the Cooperative in Ranges 8 and 9 West of 3rd P.M. lying South of the division line between Township 17 North and Township 18 North.

DISTRICT NO. 3 — All that area of the Cooperative West of the division line between Range 9 West and Range 10 West of 3rd P.M. and lying South of the Sangamon and Illinois Rivers.

DISTRICT NO. 4 – All that area of the Cooperative in Ranges 7, 8 and 9 West of 3rd P.M. lying South and West of the Sangamon River and North of the division line between Township 17 North and Township 18 North and all that area of the Cooperative in Township 19 North lying South of Salt Creek and East of the Sangamon River in Ranges 6 and 7 West of 3rd P.M.

DISTRICT NO. 5 – All that area of the Cooperative between the Sangamon River and the Division line between Township 21 North and Township 22 North, lying West of the division line between Range 6 West and Range 7 West of 3rd P.M.

DISTRICT NO. 6 – All that area of the Cooperative in Ranges 7 and 8 West of 3rd P.M. lying North of the division line between Township 21 North and Township 22 North and all that area of the Cooperative in Ranges 5 and 6 West of 3rd P.M. lying North of division line between Township 20 North and Township 21 North.

DISTRICT NO. 7 – All that area of the Cooperative lying East of the division line between Range 4 West and Range 5 West of 3rd P.M. and lying North of

the division line between Township 18 North and Township 19 North and all that area of the Cooperative in Townships 19 and 20 North in Range 5 West of 3rd P.M. and all that area of the Cooperative in Townships 19 and 20 North that lies North of Salt Creek in Range 6 West of 3rd P.M.

DISTRICT NO. 8 – All that area of the Cooperative in Township 18 North lying between the Sangamon River and the Division line between Range 2 West and Range 3 West of 3rd P.M. and all that area of the Cooperative in Township 17 North lying between the Sangamon River and the division line between Range 3 West and Range 4 West of the 3rd P.M. and all that area of the Cooperative in Township 16 North that lies North of the Sangamon River in Range 5 West and Range 6 West of 3rd P.M.

DISTRICT NO. 9 – All that area of the Cooperative lying East of the division line between Range 2 West and Range 3 West of 3rd P.M. and lying South of the division line between Township 18 North and Township 19 North and all that area of the Cooperative in Range 3 West of 3rd P.M. lying South of the division line between Township 17 North and Township 18 North and all that area

of the Cooperative in Range 4 West of 3rd P.M. lying South of the division line between Township 16 North and Township 17 North.

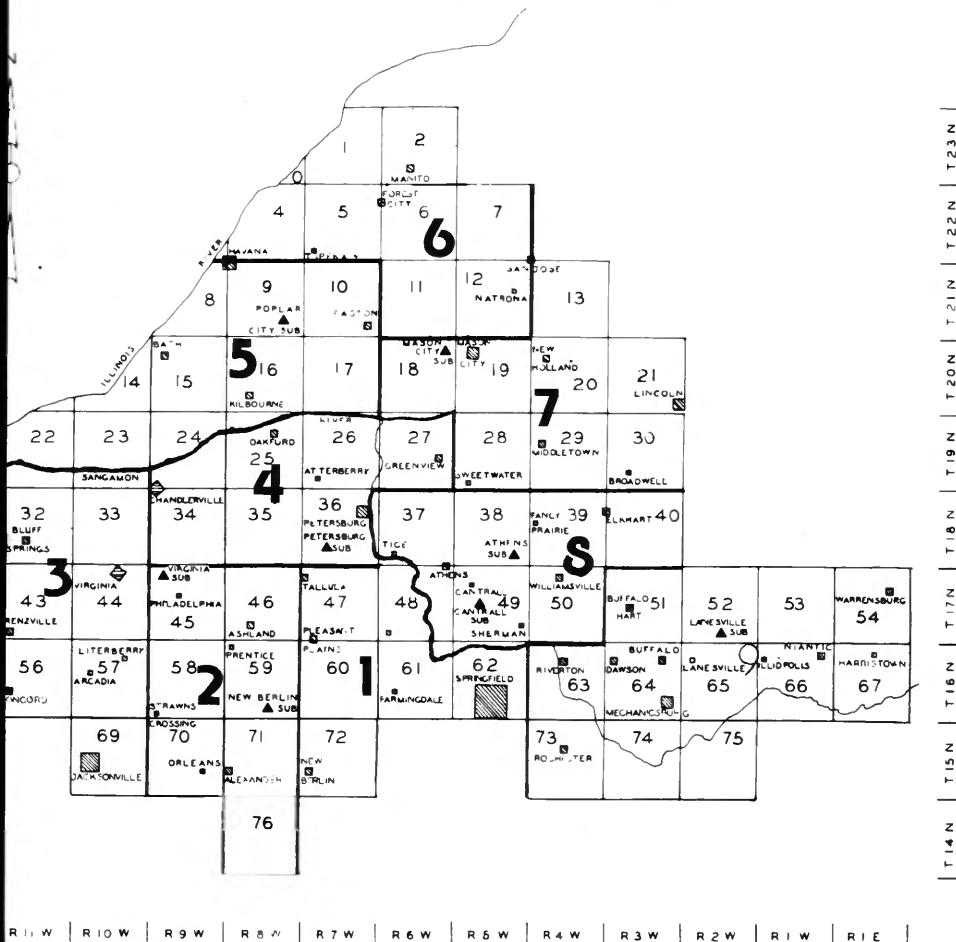
SECTION 3. QUALIFICATIONS. No member shall be eligible to become or remain a director of the Cooperative who is not a user of Cooperative service in his personal residence, or who is in any way employed or financially interested in a competing enterprise or a business selling electric energy or supplies to the Cooperative, or a business primarily engaged in selling electrical or plumbing appliances, fixtures or supplies to the members of the Cooperative, and no person shall take or hold office as a director who is the incumbent of an elective public office in connection with which a salary is paid, other than school officers. Nothing in this section contained shall, or shall be construed to, affect in any manner whatsoever the validity of any action at any meeting of the Board of Directors.

SECTION 4. NOMINATIONS. It shall be the duty of the Board of Directors to appoint, not less than thirty (30) days nor more than sixty (60) days before the date of a meeting of the members at which directors are to be elected, a Committee on nominations consisting of not less than five (5) nor more than eleven (11) members who shall be selected so as to give equitable representation on the committee to the geographical areas served or to be served by the Cooperative. No officer or member of the Board of Directors shall be appointed a member of such committee. The committee shall prepare and post at the principal office of the Cooperative at least twenty (20) days before the meeting a list of nominations for directors, but any fifteen (15) or more members may make other nominations in writing over their signatures not less than fifteen (15) days prior to the meeting and the Secretary shall post the same at the same place where the list of nominations made by the committee is posted. The Secretary shall mail with the notice of the meeting a statement of the number of directors to be elected and showing separately the nominations made by the committee on nominations and the nominations made by petition, if any. Nothing contained herein shall, however, prevent additional nominations to be made from the floor at the meeting of the members. The members may, at any meeting at which a director or directors shall be removed, as hereinbefore provided, elect a successor or successors thereto without compliance with the foregoing provisions with respect to nominations. Notwithstanding anything in this section contained, failure to comply with any of the provisions of this section shall not effect in any manner whatsoever the validity of any election of directors.

We hope every member of Menard Electric Cooperative will be able to attend the Annual Meeting. However, for those who cannot attend in person, the by-laws provide for Proxy Voting. Under the by-laws, no person may vote as proxy for more than ten members. The presence of a member at the meeting revokes his proxy, and he votes in person.

John E. Root, Manager
MENARD ELECTRIC COOPERATIVE

Bold lines = Director areas



SPECIAL INTRODUCTORY OFFER!

GLEAMING GIANT TUNED CHIMES

SALE \$7⁸⁸
 SAVE 80% OFF
 THE NATIONALLY
 ADVERTISED PRICE OF \$35.95.

CREATE A HEAVENLY CONCERT!

The loveliest sounding chimes you'll ever hear! Unlike other chimes, they neither tinkle nor clang. Each of five steel tubes is carefully tuned to ring a different tone—harmonizing beautifully with its companions in endless variation. Orchestrated by the wind, their mellow sound & deep resonance will charm anyone who hears them! Brass-plated tubes; crystalline yoke & clapper. 4 ft lg.

NO RISK GUARANTEE:
 You must be completely satisfied with your purchase or we will refund your money promptly—no questions asked!

**GLOWS
WITH THE
LUSTER OF
POLISHED
BRASS!**

spencer[®] GIFTS, INC.

G-34 Spencer Building,
 Atlantic City, N.J. 08411

- Please send me the Giant Tuned Chimes (51029) for only \$7.88 plus \$2.50 postage & handling
- SAVE \$3.08 MORE!** Order 2 Giant Tuned Chimes for only \$14.18 plus \$3.50 postage & handling

Add State Sales Tax (see chart) _____
 Add Insurance (lost or damaged orders will be replaced)45

I enclose Check or Money Order for Total \$ _____

Charge to: American Express MasterCard
 Visa Diners Club

Card No. _____ Exp. Date _____

Signature _____

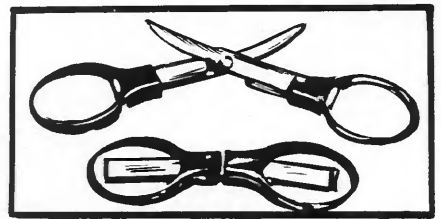
Print Name _____

Address _____

City _____ State _____ Zip _____

STATE SALES TAX CHART: Residents of these states must add Sales Tax listed: OK 2%, AR 4%, IA 3%, LA 3%, NE 3%, NH 3%, NJ 3%, AL 4%, CA 4%, IL 3%, MI 3%, SC 3%, VA 3%, VT 4%, MD 4%, FL 3%, IN 3%, KY 3%, MA 3%, ME 3%, MS 3%, SD 3%, TX 3%, UT 3%, WI 3%, WV 5%, OH 5%, NV 5%, CA 4%, MN 5%, PA 3%, RI 3%, TN 3%, WA 6.2%, NY 7%, CT 7.5%, NYC 8.4%

© Spencer Gifts, Inc. 1983



DELUXE FOLDING SCISSORS 79¢

An open & shut case of convenience. Quality steel blades, cushioned plastic handles, ingeniously engineered to fold to absolutely safe 3" size to slip easily into pocket, purse, sewing kit, first aid kit, glove compartment, tackle box, etc. Great for in-store coupon clipping. Vinyl case included. A great value at only 79¢ Pr., 2 Pr. \$1.50, 6 Pr. \$4.25, 1 Dz. \$7.95 ppd. Fund Raisers write for quantity prices. Money-back guarantee. Pls. allow up to 6 wks. for delivery.

TWO BROTHERS, INC.

Dept. FS-584

1602 Locust St.

St. Louis, Mo. 63103

Dentures

\$195

Total Cost For Both Upper & Lower Dentures

- High Quality
- Low Prices
 - 1 Day Service
- Licensed Dentists
 - General Dentistry
 - Processing of Ins. Forms

*Complete Dental Services
 plus Ozark Hospitality*

WE WANT YOU SATISFIED!

We'll meet your bus, make your hotel reservations, or give you free hookup for your recreational vehicle.

*Please call for
 an appointment or
 WRITE FOR FREE DETAILS*

**Frederick C. Lauer DDS
 Mid-America
 Denture Clinic**

Haywood Drive Rt. 3, Box 19C
 Mt. Vernon, Mo. 65712
 (417) 466-7196

Patients now number in the thousands . . . from the Atlantic to the Pacific from Alaska to the Southern most tip of South America.

ILLINOIS RURAL ELECTRIC NEWS



Harry Kuhn

and Ryan live in Steeleville.

Egyptian Electric Cooperative Association is a member-owned electric utility serving some 10,500 farms, homes and businesses in parts of eight counties in Southern Illinois.

To order a copy,
use the coupon on page 8.

HOME WEATHERIZATION
For lower-cost living comfort

Published by
the Electric Cooperatives of Illinois

**End weeding
chores forever!**

Stop fighting garden weeds! The amazing Mantis-20 Tiller/Cultivator ends the "weed cycle" with no chemicals...no back-breaking labor!

Use the Mantis-20 to prepare your garden soil for planting...then as your garden grows, use Mantis to *destroy harmful weeds* ... quickly and easily.

Makes your garden the showplace of the neighborhood.



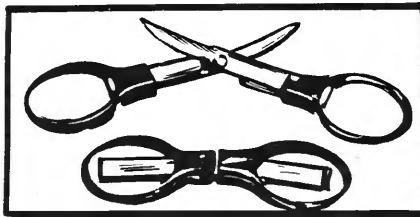
The Mantis-20 Tiller/Cultivator:

- Priced 1/3 to 1/2 the cost of big tillers
- Lightweight...only 20 pounds
- Easy and fun to use...cuts work in half!
- High-speed tine teeth work fast, dig deep
- Does 7 jobs in all for yard and garden
- Special Discounts available now!

Mantis Manufacturing Co.
2651 Huntingdon Pike
Dept. 200
Huntingdon Valley, PA 19006

Please send complete information on the Mantis and all its attachments!

NAME _____
ADDRESS _____
TOWN _____
STATE _____ ZIP _____



DELUXE FOLDING SCISSORS 79¢

An open & shut case of convenience. Quality steel blades, cushioned plastic handles, ingeniously engineered to fold to absolutely safe 3" size to slip easily into pocket, purse, sewing kit, first aid kit, glove compartment, tackle box, etc. Great for in-store coupon clipping. Vinyl case included. A great value at only 79¢ Pr., 2 Pr. \$1.50, 6 Pr. \$4.25, 1 Dz. \$7.95 ppd. Fund Raisers write for quantity prices. Money-back guarantee. Pls. allow up to 6 wks. for delivery.

TWO BROTHERS, INC. Dept. FS-585
1602 Locust St. St. Louis, MO 63103

DID YOU KNOW?

That old stock tank, water reservoirs, etc., coated with Virden Tank Coat, are better than new ones! Fix it and forget it! Let us send you complete information. This is our 33rd year.

VIDREN PERMA-BILT CO., 2821
Mays St., P. O. Box 71601N, Phone:
806/352-2761, Amarillo, TX 79109

Put the enjoyment back into canning with **LID CADDY**

Canning Lid Sterilizing Rack

- eliminate problem of lids sticking together
- wide mouth & regular size lids
- easy to remove with tongue
- carrying handle
- bright zinc finish
- easy to assemble

Send Check or Money order to:

LID CADDY \$1.69
Dave Fleagle Post. & Hand. + 1.31
Box 272, D Moweaqua, IL 62550 **\$3.00**

217-768-3828
Allow 4-6 weeks delivery
Dealers Fundraisers Inquiry
Patent Applied For



UNIBUILT HOMES
We Deliver

That's right... Unibuilt homes are delivered directly to the building site, complete with wall and floor coverings, kitchen and bath fixtures in place. Plus Unibuilt's modular design features better quality construction and comfort than you would expect from a conventional stick-built home, but at significant savings to you!

- Several sizes and designs to choose from.
- Completely pre-engineered and architect designed.

- Energy efficient using superior insulating technology.
- Meet or exceed FmHA, BOCA, FHA and local building codes.
- Ready for your family in 45 days or less!

For more information on affordable Unibuilt homes, mail the coupon or call TOLL FREE 800-637-2040. In Illinois: 1-800-252-6546

I want to know more about Unibuilt's modular home system.

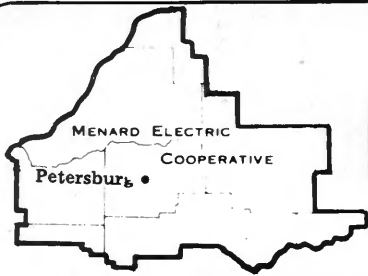
- Please send literature.
 Please have a salesman call.



A Product of the Reasor Corp.
P.O. Box 460
Charleston, Illinois 61920

NAME _____
ADDRESS _____
PHONE _____
CITY _____
STATE _____ ZIP _____

REN I



Menard Electric News

MENARD ELECTRIC COOPERATIVE 217-632-7746 PETERSBURG, ILLINOIS 62675

Co-op Comments

Alan Horn will complete five years of service with your Cooperative on June 26. Alan lives at Route 3, Petersburg, and is staking engineer for your Cooperative.

The 46th Annual Meeting of your Cooperative was held on Saturday, June 4, at PORTA High School. A full report of the meeting will be included in the July issue of the *Illinois Rural Electric News*.

Energy bills were mailed on or about May 31 covering service to May 9 and 10. Bills dated May 31 will be due not later than June 21. If an arrear appeared on your May 31 bill, this may well indicate that the May 9 payment had not been received by the Cooperative by May 26. If this amount has been paid, please deduct it from the May 31 billing.

The meter readers read Cooperative meters on June 13, 14 and 15. We appreciate very much the cooperation of Cooperative members which has been shown to the meter readers. The readings that were obtained on the above dates will be utilized on the billing which will be rendered on June 30.

Your attention to the accompanying ad located elsewhere on this page "Helping To Hold Down Your Cooperative's Power Cost" is most important. Any assistance which each member can contribute in reducing their kilowatt-hour usage between 10 a.m. and 10 p.m., Monday through Friday, will be a significant contribution in holding the cost of electrical energy to as low a level as possible.

HOLIDAY CLOSING

Menard Electric Cooperative offices will be closed Monday, July 4.

THRIFTY?



Helping to hold down your cooperative's power costs is just a matter of time

It's not really how much power you use but when you use it that has the most effect on your electric cooperative's power bill. Between 10 a.m. and 10 p.m. on weekdays is when cooperative members demand the greatest amount of electricity. And during the warmest part of summer days when the temperature is 90 degrees or above, that demand is highest. . . . As a result, your cooperative's power supplier must operate costly oil-fired units during those times and less efficient coal-fired units held in reserve just to meet these peak demands. And the use of that more expensive power by the cooperative's members is reflected on your cooperative's wholesale power bill and, ultimately, on your cost for electric service.

You can help hold down your cooperative's wholesale power costs with little discomfort to you and your family. On any weekday the temperature is predicted to be near 90 degrees or higher limit your use of heavy, heat-producing electric appliances during the hottest hours of the day.

Do your cooking, clothes washing and drying and dish-washing in the early morning and late evening hours.

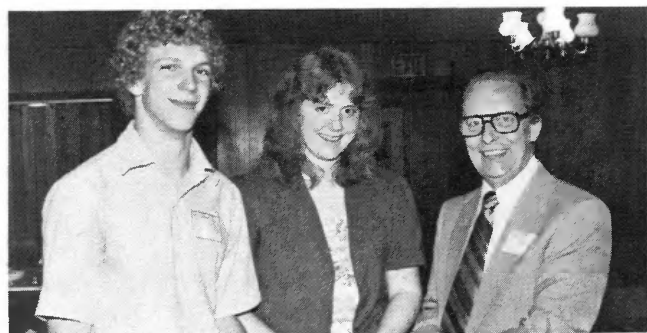
Help your cooperative most when it counts most . . . weekdays between 10 a.m. and 10 p.m. Do your share to level out expensive demand peaks and you and your cooperative will benefit . . . time after time.



Finalists in this year's contest were: seated from left, Laurie Muzzy, Route 5, Springfield; Julie Ladson, Route 5, Springfield; Lisa Rogers, Route 1, Athens; and Teresa Wallbaum, Route 1, Murrayville; and standing from left, Brian Todd, Athens; Keith Reichert, Route 1, Cantrall; Dean Edwards, Route 5, Springfield; Mark Dugger, Route 2, Athens; and Bryan Brennan, Cantrall. Not present for the photo was Donna Hubbard, Route 1, Athens.

Julie Ladson, Dean Edwards win D.C. trip

Winners of the Menard Electric Cooperative annual "Youth to Washington" essay contest were named on May 23. They are: Julie Ladson, daughter of Mrs. Gayle Ladson, Route 5, Springfield; and Dean Edwards, son



Dr. Robert Poorman, president of Lincoln Land Community College, Springfield, presents certificates to Dean Edwards and Julie Ladson, winners of the contest.



Judges for the contest were, seated from left, Mrs. Robert Poorman, Mrs. C. Kenneth Smith, and Mrs. Wayne Winkelmann, and standing from left, Larry Elledge and Jim Russell.

of Mr. and Mrs. David G. Edwards, Springfield. Julie and Dean are high school juniors at Athens High School.

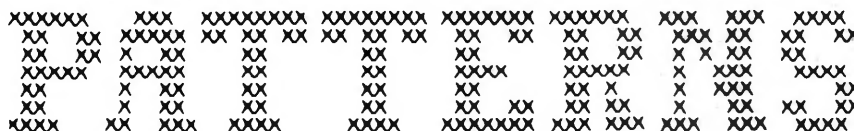
Selection of the two winners was made from among ten high school finalists, Manager John Root said. Students wrote essays during the contest detailing their views on "My Solution to America's Energy Problems," and Root pointed out that all students who entered the contest displayed fine ability, indicating considerable study and preparation and that the Cooperative is extremely proud of each of them.

"It is a privilege to send these outstanding young leaders to our nation's Capital. The tour is one of the finest tours of Washington, D.C., and I am sure it will be a memorable, as well as an educational experience," Root said.

The outstanding panel of judges who made the final selection indicated that the quality of essays this year was above average. The contest judges were: Mrs. Robert Poorman, Springfield; Mrs. Wayne Winkelmann, Oakford; Larry Elledge, Springfield; Mrs. Kenneth Smith, Easton; and James Russell, Springfield.

Julie and Dean were scheduled to join nearly 60 other high school students from 18 cooperatives throughout Illinois in Springfield on June 10 to travel aboard air-conditioned buses for the all-expenses-paid trip to Washington and return on June 17.

During the week in Washington, the Illinois participants were to join nearly 1,000 other students from 27 states and participate in the Rural Electric Youth Week activities sponsored by the National Rural Electric Cooperative Association. Their activities and tours included the battlefield at Gettysburg, Pennsylvania; the U.S. Capitol Building; the Library of Congress; Arlington National Cemetery; the Smithsonian Institute; and many other national shrines. In addition, the students were to be special guests at the White House.



- No. 4507 is cut in sizes 10½, 12½, 14½, 16½, 18½, 20½. Size 14½ (bust 37) takes 1-7/8 yards 60-inch fabric.
- No. 9329 is cut in sizes 10½, 12½, 14½, 16½, 18½, 20½. Size 14½ (bust 37) dress takes 1-5/8 yards 60-inch.
- No. 4964 is cut in Multi-size pattern. Sizes (6, 8, 10, 12), (14, 16, 18, 20). Order your regular size.
- No. 9050 is cut in Women's Sizes (34, 36, 38), (40, 42, 44), (46, 48, 50). Order your regular size.
- No. 4996 is cut in sizes 8, 10, 12, 14, 16, 18, 20. Size 12 (bust 34) takes 3¼ yards 45-inch fabric.
- No. 9413 is cut in sizes 10½, 12½, 14½, 16½, 18½, 20½, 22½, 24½, 26½. Size 14½ (bust 37) takes 2¼ yards 60-inch.
- No. 9048 is cut in Waist Sizes 24, 25, 26½, 28, 30, 32, 34. Size 26½ wrap 2 yards 45-inch; other 1-7/8.
- No. 9195 is cut in Women's Sizes 36, 38, 40, 42, 44, 46, 48, 50. Yardages given in pattern.
- No. 9420 is cut in sizes 10½, 12½, 14½, 16½, 18½, 20½, 22½. Size 14½ (bust 37) takes 4½ yards 45-inch.
- No. 9346 is cut in sizes 2, 4, 6, 8. See patterns for yardages.
- No. 4531 is cut in sizes 8, 10, 12, 14, 16, 18, 20. Size 12 (bust 34) takes 2-5/8 yards 45-inch fabric.
- No. 9174 is cut in sizes (6, 8, 10, 12) (14, 16, 18, 20). Order your regular size.

TO: PATTERNS
 Illinois Rural Electric News
 P.O. Box 3787
 Springfield, IL 62708

I have enclosed \$_____ (\$2.25 per pattern - cash, check or money order accepted) for the following patterns:

Pattern No.	Size	Pattern No.	Size
_____	_____	_____	_____
_____	_____	_____	_____
_____	_____	_____	_____

Print Name _____

Address _____

City _____

State _____ Zip _____

Highlights

(Continued from page 5)

Among the many notable experiences for Illinois youth participating in the 1983 Tour were visits to Gettysburg National Military Park, new National Aquarium at Baltimore, Air and Space Museum at the Smithsonian Institution, Library of Congress, Mt. Vernon, Arlington Cemetery, Lincoln Memorial, Washington Monument, Jefferson Memorial, Viet-

nam War Memorial and National Zoo. A large number of the students on the tour were winners of all-expense-paid trips as winners of their local cooperatives' essay contests. Others participated as "Willie Wiredhand" tourists, including students who did not win their cooperatives' contest and children and grandchildren of cooperative directors and employees, who are not eligible for the essay competition. "Willie" participants pay all their own expenses.

Curtis Puts the Own Back Into Homeownership



You Can Beat High Housing Costs and Build NOW!

Save \$1,000's by Completing it Yourself.

- We do the heavy, difficult framing on your lot and foundation.
- Do all or part of the finishing with Curtis-supplied materials/instructions.

Affordable Financing makes it possible.

- No down payment or deposit.
- Low monthly payments while building.
- Your land may not have to be fully paid for.

There's a Representative Near You!
CALL TOLL FREE 1-800-228-6505
or (612) 542-4300

Complete It Yourself

Curtis Homes 

If you have desire... We have the trust!



Send coupon today for full details!

Send me your FREE Homes Catalog
CURTIS HOMES, DEPT. IL-1
327-5th St., Ampoint Industrial Park, Perrysburg OH 43551
(Please Print)

Name _____
Address _____
City _____ State _____ Zip _____
Phone (_____) _____
 We own land.
 Enclosed is \$1.00 for priority handling.

PRICE ROLL BACK! BUILT ANYWHERE IN ILLINOIS

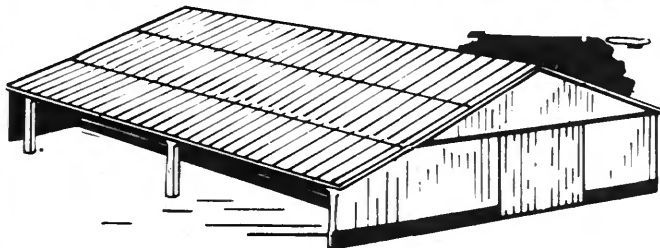
TOTAL LABOR AND MATERIAL

30' x 50' x 10'
HAY BARN

\$2995

CALL TODAY TOLL FREE 1-800-331-BARN

OTHER SIZES AND STYLES AS BELOW AT SIMILAR SAVINGS!



CUSTOM
BUILD
ANY SIZE!

Colors Available
At Additional
Cost.

Makes Ideal Storage for Boats, Machinery, Grains and Feeds.
FARM STRUCTURES, OIL EQUIPMENT WAREHOUSES

SAVE WITH OUR PRICE NOW!
TURN KEY... SEE ME...

Al Burris General Contractor, Inc.

1429 E. 41st. Street... Phone (918) 743-9232 or 743-2814
TULSA, OKLAHOMA 74105 - WORKMEN FULLY INSURED

GARDENING?

NEW TIGER
TILLER

**TILLS KNEE DEEP!... WEEDS SHALLOW
RUNS SINGLE HANDED... MAKES SOIL
WEED FREE FAST... WITHOUT HARD WORK.**

WEIGHS 22 LBS... VERY GENTLE, WON'T JUMP
LIKE OTHER TILLERS... ADJUSTABLE - HOOD - TINES
AND ALL FROM 18 TO 2 INCHES WIDE... PRICED RIGHT!



Weights 22 Pounds
Gasoline Powered



Tills Deeper Than
Other Tillers Do



Weeds Fast from
12 to 2 In. Wide

1. Built for commercial use... Rugged Air Force approved engine... Try this tiller in your own garden... 1 month money back trial period, liberal warranties... Sold factory direct saves you \$.

NOT SOLD IN STORES... FREE GARDENING GUIDE

WRITE TO: ALLENTOWN TILLER CO., DEPT. 45
c/o Allentown Feed Co., Main St., Allentown, N.J. 08501

For Rush Mailing of Literature call
Ask for Betty Allen... 201-530-9380

40 BRAND NEW TOWELS \$1.75!

UNWOVEN COTTON OR RAYON - Assorted beautiful Pastel Colors.
BRAND NEW - NOT Seconds - 40 Towels for \$1.75 or 80 for only
\$3.35. 120 just \$4.95. Super Quality. Pls. include 50¢ extra for pstg.
and hding. with EACH set of 40 Towels you buy. We know Towels -
we've sold 70,000,000 already. Fund Raisers write for quantity
prices. Money-Back Guarantee. No C.O.D.'s. Pls. allow up to 6 wks.
for delivery.

40 TOWEL CO.
1602 Locust St.

Dept. C-103
St. Louis, Mo. 63103

GARDENERS:



**At Last! A Small Tiller
That Works!**

Forget about big,
clumsy yank-you-along
tillers forever!

The Mantis tills a
sensible 6"-9" wide
(not 20" or more like
big tillers). Mantis
weighs just 20 lbs. (not
200 to 300 lbs.). Mantis'
tines are so rugged
they're warranted
unbreakable for life...

**TILLS DEEP!
WEEDS FAST!**

Mantis' engine is so
durable we give you a
lifetime replacement

agreement. Mantis' tines go through
tough soil like a chain saw goes through
wood. No jerking, no yanking you
along... and Mantis turns on a dime!
Put the fun back in gardening.

SEND TODAY FOR FREE INFORMATION!

For more information write

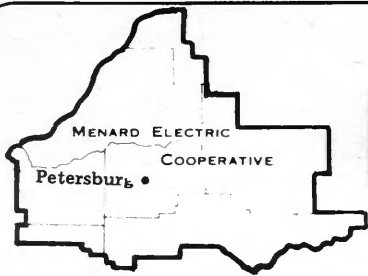
Mantis Manufacturing Co.
1458 County Line Rd., Dept. 237
Huntingdon Valley, PA 19006

Name _____

Address _____

City _____

State _____ Zip _____



Menard Electric News

MENARD ELECTRIC COOPERATIVE 217-632-7746 PETERSBURG, ILLINOIS 62675



Members listen attentively during a question and answer session.

Officials for stabilized rates

Unless something unexpected happens, members of Menard Electric Cooperative should get through 1983 without a rate increase, according to Morris L. Bell of Chandlerville, president of the cooperative.

Speaking at your cooperative's 46th annual meeting June 4 at PORTA High School in Petersburg, Bell noted that the stabilization in rates stems from economies practiced by Menard Electric and its bulk power supplier,

Co-op Comments

Mr. and Mrs. Mark Bradley of Route 3, Petersburg, celebrated their 10th wedding anniversary on July 7. Mark is a leadman with your Cooperative.

Mr. and Mrs. Carl T. Atterberry celebrated their fifth wedding anniversary on July 1. Carl is the general foreman for your Cooperative.

CONDITION 90 DAYS ARE HERE

Your cooperation in limiting the "heavy use" appliances between 10 a.m. and 10 p.m., Monday through Friday, will have a direct bearing on your power costs for the next 11 months.

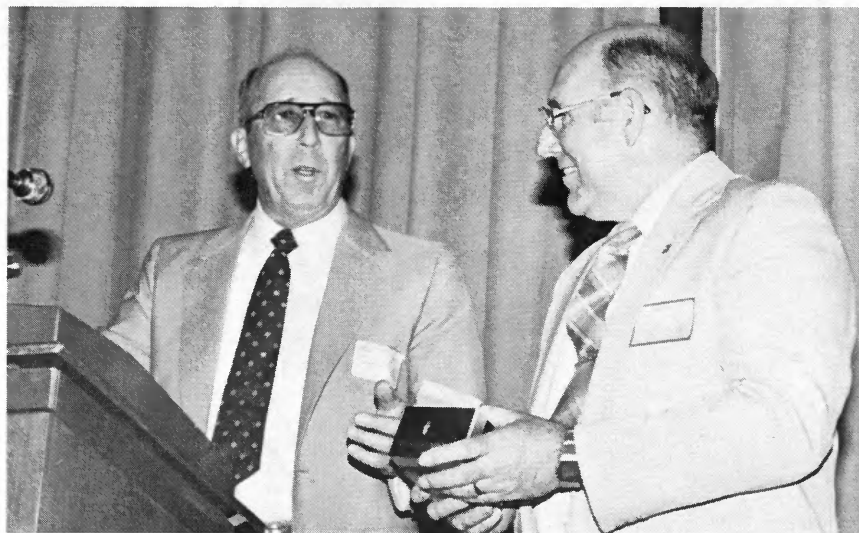
Meter readings were secured on July 13, 14, and 15 and will be utilized on the July 31 billing. Meters will be read on August 15, 16, and 17; September 17, 19, and 20; October 19, 20, and 21; November 18, 19, and 21; and December 19, 20, and 21. Your cooperation in assisting the meter readers on the above schedule will be appreciated.



Above, the serving line was a popular place. Below, the Menard County Pork Producers prepared the barbecued pork chops.



Manager John Root, left, presents a watch to Dorland Smith, staff assistant, in recognition of 25 years of service to the cooperative.



ee s for 1983

Western Illinois Power Cooperative (WIPCO) of Jacksonville.

"WIPCO searched out coal at a reduced price, and that helped keep costs down. Probably one of the more resourceful actions the board took last year," Bell said, "was to authorize the purchase of substation monitoring equipment and load controls for irrigators. This gives them more choices in the type of service they could receive through compensatory rates. The cooperative, in turn, has been able to buy electricity cheaper because of the lower maximum demands on the irrigation substations. As a result, the savings have already exceeded the \$150,000 equipment cost."

Manager John Root discussed another money-saving measure initiated recently, the practice of employing contracted meter readers instead of having each member read his own meter.

"Meter reader contracts and supplies are an added cost to the cooperative," he said, "but when the benefits are evaluated, we find that they far outweigh the cost, both now and in the future.

"For example," Root continued, "we expect the cost of the program to be about \$40,000 per year. By using meter readers we can shorten the time between the payment for our wholesale power bill and when we recover the funds from billings by 21 days. Our wholesale power cost will average \$516,800 per month according to our 1983 budget, so if we consider the use of this money for 21 days each month at only eight percent interest, the

savings will amount to \$28,500 per year," he noted.

Additional savings are expected with fewer incorrect readings and their attendant member dissatisfaction, Root added.

Treasurer James G. Graff of Middletown reported that the cooperative's kilowatt-hour sales had shown a welcome 3.5 percent increase in 1982 after a drop the previous year.

"The assets of your cooperative are up over \$1-million from 1981, operating margins for 1982 were nearly \$738,000, and your member equity is up nearly \$1-million. Taxes increased again," he remarked, "and we paid out \$82,371 last year," he said.

Hickory H. Hurie of Tallula, Howard Montgomery of Petersburg and Meredith Worner of Manito were reelected to the board of directors of the cooperative for three-year terms.

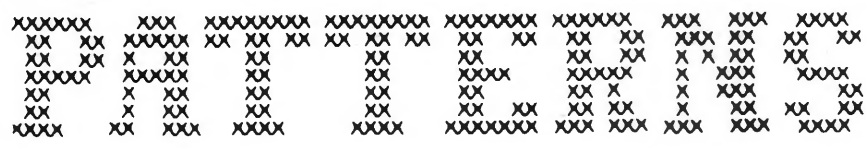
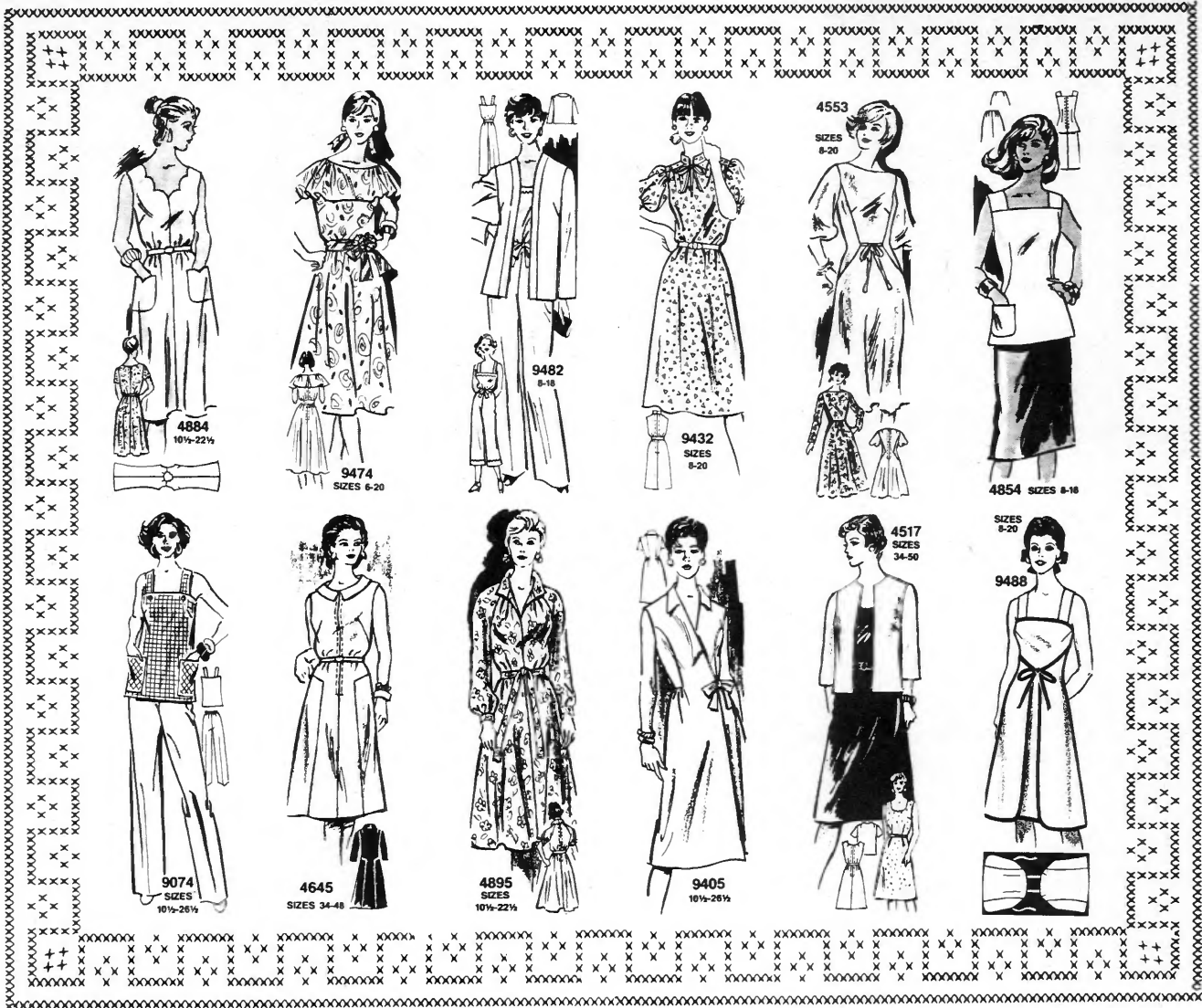
After the meeting the board met to reorganize and elected Morris Bell of

Chandlerville president, Dale R. Lepper of Ashland vice president, Charles B. McMillan of Williamsville secretary and James G. Graff of Middletown treasurer.

The Ansar Shrine Chanters from Springfield provided entertainment for the meeting.



Above, Homer Weidhuner gives the nominating committee report. Below, James Bearden, groundman-truck driver, also received a watch for 25 years of service. Edward L. Rogers, area serviceman from Virginia, who also received a 25-year watch, was unable to attend the meeting.



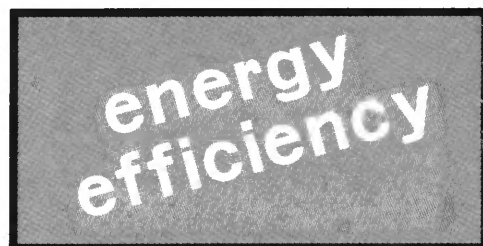
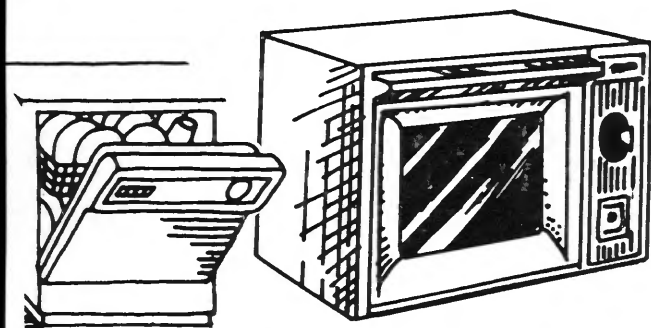
- No. 4884 is cut in sizes 10½, 12½, 14½, 16½, 18½, 20½, 22½. Size 14½ (bust 37) takes 2-3/8 yards 60-inch.
- No. 9474 is cut in sizes (6, 8, 10, 12), (14, 16, 18, 20). Order your regular size.
- No. 9482 is cut in sizes 8, 10, 12, 14, 16, 18. Size 12 (bust 34) ensemble takes 3-3/8 yards 60-inch fabric.
- No. 9432 is cut in sizes 8, 10, 12, 14, 16, 18, 20. Size 12 (bust 34) takes 3-1/8 yards 45-inch fabric.
- No. 4553 is cut in sizes 8, 10, 12, 14, 16, 18, 20. Size 12 (bust 34) takes 4-1/8 yards 45-inch fabric.
- No. 4854 is cut in sizes 8, 10, 12, 14, 16, 18. Size 12 (bust 34) takes 1½ yards 45-inch; shirt 1-3/8.
- No. 9074 is cut in sizes (10½, 12½, 14½), (16½, 18½, 20½), (22½, 24½, 26½). Order your regular size.
- No. 4645 is cut in Women's Sizes 34, 35, 38, 40, 42, 44, 46, 48. Yardages given in pattern.
- No. 4895 is cut in sizes 10½, 12½, 14½, 16½, 18½, 20½, 22½. Size 14½ (bust 37) takes 2-5/8 yards 60-inch.
- No. 9405 is cut in sizes 10½, 12½, 14½, 16½, 18½, 20½, 22½, 24½, 26½. Size 14½ (bust 37) takes 2-7/8 yards 45-inch.
- No. 4517 is cut in sizes 34, 36, 38, 40, 42, 44, 46, 48, 50. See pattern for yardages.
- No. 9488 is cut in sizes 8, 10, 12, 14, 16, 18, 20. Size 12 (bust 34) takes 3-1/8 yards 45-inch fabric.

TO: PATTERNS
 Illinois Rural Electric News
 P.O. Box 3787
 Springfield, IL 62708

I have enclosed \$_____ (\$2.25 per pattern — cash, check or money order accepted) for the following patterns:

Pattern No.	Size	Pattern No.	Size
_____	_____	_____	_____
_____	_____	_____	_____
_____	_____	_____	_____

Print Name _____
 Address _____
 City _____
 State _____ Zip _____



Hot summer months

- Check the temperature in your refrigerator, too. Place an outdoor thermometer in the fresh food section and leave it there for about 15 minutes. The temperature should be about 38-42 degrees F. If it is not, adjust the temperature control. Check the freezing compartment's temperature, too. It should be around 5 degrees F.

- Colder-than-necessary temperatures waste energy.

- Check the frost buildup on the freezer compartment. It should not exceed one-fourth of an inch. As a general rule, manual defrost refrigerators take less energy to operate than automatic defrost units, but not if frost is allowed to build up excessively.

Your refrigerator should be located away from sources of heat, such as ranges. The motor housing and con-

denser coil should be kept clean, and unless your refrigerator is designed to be built in, it should be away from the wall an inch or two to allow air to circulate around the compressor.

Once those things are taken care of, instruct your family on good habits in using the refrigerator. Let hot foods cool a bit before placing them in the refrigerator. Reduce the number of times the refrigerator is opened and never leave the door open longer than a few seconds. To thaw frozen foods, first place them in the fresh food section so that, as they thaw, they can help cool the refrigerator.

If you are planning to buy a new refrigerator, it is energy economical to buy one with a power-saver switch.

Some refrigerators have heating elements in their walls or doors to prevent "sweating" on the outside. In most climates, the heating element does not need to be working all the time. The power-saver switch turns off the heating element, saving up to 16 percent on refrigerator operating costs.

Weigh the benefits of a frost-free refrigerator against those requiring manual defrosting. Although you will need to defrost them regularly, the manual-defrost models will cost less to buy and operate than automatic defrost units.

If you choose the manual-defrost model, remember that frost buildup increases the amount of energy needed to keep your food cold.

GARDENING?

AMAZING
NEW TILLER

**WEIGHS 22 LBS! ... RUNS SINGLE HANDED.
WON'T JUMP OR BOUNCE LIKE OTHERS.**

**BUILT FOR COMMERCIAL USE ... TILLS KNEE DEEP!
WEEDS FAST AND SHALLOW.**



1. Tills 10 to 16 inches deep, depending on soil conditions.
2. Weeds from 1/2 to 3 inches deep. Makes gardens weed free fast ... without hard work!
3. It's adjustable, hood, tines and all ... Tills or weeds, at 18-15-12-9-6 or 2 inches wide!
4. 1/2 the cost of other single handed tillers.
5. Air Force approved engine ... one month money back trial period ... Years ahead of other machines. Send for brochure ... you might win a tiller!

Tills in standing corn stalks and bothersome vines.

NOT SOLD IN STORES ... FREE GARDENING GUIDE

WRITE TO: ALLENTOWN TILLER CO., DEPT 45
c/o Allentown Feed Co., Main St., Allentown, N.J. 08501

For Rush Mailing of Literature call
Ask for Betty Allen ... **201-530-9380**

Your Own Custom Home \$271.55 PER MONTH



(The Eisenhower - 1 of 63 basic models in '83 catalog.)

WRITE FOR YOUR LOCAL
PRESIDENT HOMES REPRESENTATIVE

PRESIDENT HOMES

Division of
Harvey Builders, Inc.

4808 N. Lilac Dr., Minneapolis, MN 55429 (612) 537-3622

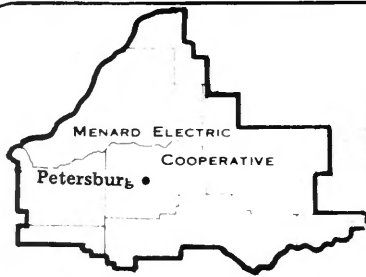
NAME _____
ADDRESS _____
CITY _____ STATE _____
ZIP _____ PHONE _____

Custom Built Pre-Cut Homes...Our Only Business Since 1952

IL-30

10 REASONS TO BUILD A PRESIDENT HOME NOW!

1. Own your own home for as little as \$271.55 per month, based on 180 equal monthly payments, not including taxes and insurance.
2. Cash price is as low as \$23,371 and includes all finishing materials, cabinets, heating, electrical, and plumbing systems.
3. Own your own home free and clear in 10 or 15 years.
4. We finance everything we furnish and do.
5. Down payment as low as \$100.
6. Low 11.4% Annual Percentage Rate financing in a conventional fixed-rate mortgage.
7. Use or alter one of our 63 plans or design your own.
8. Firm prices include all materials delivered to job site.
9. No hidden costs. No closing costs. No prepayment penalty.
10. We rough-erect your home on your lot and foundation. You do the easy finishing work and save thousands of dollars.



Menard Electric News

MENARD ELECTRIC COOPERATIVE 217-632-7746 PETERSBURG, ILLINOIS 62675

New member handbook being prepared

A new handbook has been prepared and will be mailed to each Cooperative member as soon as it arrives from the printer. The handbook will allow all Cooperative members to understand the rules and regulations of the Cooperative and will allow you to appreciate the value and privileges of membership. Several revisions have been made in the handbook and are most important to you as a Cooperative member.

When you receive the new handbook, we suggest that you retain it so that it will be readily accessible as we strive to make electric energy available at the lowest cost consistent with sound economy and good management for the benefit of all Cooperative members.

Some of the revisions in the handbook are listed in this article and particular attention should be drawn thereto. The revisions as outlined will become effective October 1, 1983:

Deposits: A deposit of not less than \$100 per service is required of each new member or previous member activating an inactive account.

Collection of Overdue Accounts: If an employee is sent to collect an energy bill the collection charge will be \$25, in addition to the amount owed.

Bad Check Processing: \$15 will be added to the member's account anytime a check is returned from the bank marked "insufficient funds."

Reconnection Charge: When a service is reconnected within a 12-month period for the use of the most recently disconnected consumer at the same premise, a \$25 charge will be made. If service is reconnected during overtime hours, overtime charges will apply. The above charges will also apply for

security lights that are disconnected and reconnected.

Overtime Connections: Any service connected during overtime hours will be charged \$25 in addition to all other charges required during regular working hours.

Meter Testing: A member requesting a meter test for accuracy will be required to pay \$7.50 fee in advance.

Right of Access: Unreasonable deterrence to access of Cooperative's facilities may cause the service to be disconnected.

Temporary Meter Loops: (for construction purposes) Temporary meter loops will be provided with 30 amp capacity and a monthly rental charge will be made for this service in addition to the minimum and for the kilowatt hours used.

Deposits required under the new deposit policy, which will be implemented on October 1, will be refunded after the member has maintained a payment record for 12 consecutive months without being delinquent (this means that payment must be received in the Cooperative office not later than the due date shown on the original bill). If an employee of the Cooperative is sent to effect collection of a member's energy bill due to insufficient funds check or other charges, the member will be required to pay or already have a deposit of not less than \$100.

Should you have any questions with reference to the revised procedures of the Cooperative, please do not hesitate to contact the office at your earliest convenience.

No post-dated checks accepted

Your Cooperative cannot accept post-dated checks which are to be held and deposited at some later date. When making payment of your energy bill, please do not send a post-dated check.

All checks are deposited promptly and if a check is returned by the bank

due to being post dated or due to insufficient funds additional charges are passed on to you.

If you mail your payment, we urge that you mail it early enough to be certain that it will be in the office not later than the 21st of the month, in order to avoid additional charges.

Readers need access to electric meters

We request all Cooperative members to please make sure that all meters are readily accessible to meter readers. By cutting weeds and trimming shrubs and tree branches away from the meter, you will allow our readers to make timely and accurate readings. Your cooperation will enable the meter readers to do their job with a minimum of time and we appreciate your assistance in this matter.

Condition 90 is here!!!

HERE'S HOW YOU CAN HELP
... Be alert for **CONDITION 90** days this summer! Any weekday the temperature is predicted to rise to 90 degrees or above, limit your use of heavy, heat-producing appliances during the hottest hours of the day, between 10 a.m. and 10 p.m. Do your cooking, clothes washing, clothes drying and dish-washing in the early morning and late evening hours.

Using garage door opener without power

ME

If you have an automatically opening garage door, do you know how to open it if the electric power is off?

There are several things which could cause you to need to know how to open the door manually. There may be an outage due to a storm, a transformer fuse blown, or a main circuit breaker, an individual circuit breaker fuse or fault in either the electrical power or control wiring, in addition to a faulty control switch on the mechanism itself.

Most of these automatic doors, if properly installed, should be very easy to open or close. The door-lifting springs should be adjusted to where only a little extra effort is required to open the door.

There is "supposed" to be a short

rope or chain hanging from the latching mechanism where the door mechanism is connected to the lifting screw or chain. Pull this short rope or chain toward the lifting motor. The first pull should unlatch the mechanism and

then further pulling should open the door. If this doesn't work, read your instructions if you have any and if not, ask the installer of the device. Each car operator in the family should know how to do this.

Meter seal very important

Each month when the meter reader arrives at your meter, we ask that they check all meter seals. In order to do this job properly, it is necessary that the meter reader tug gently on the seal. This does not harm the seal and does no damage to the meter.

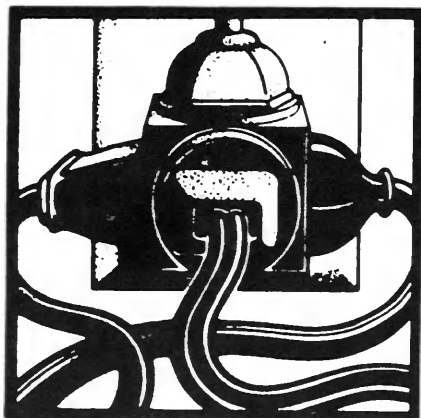
If you see your meter reader tugging on your meter seal, don't worry — they're just doing this for your protection.

If it becomes necessary for your

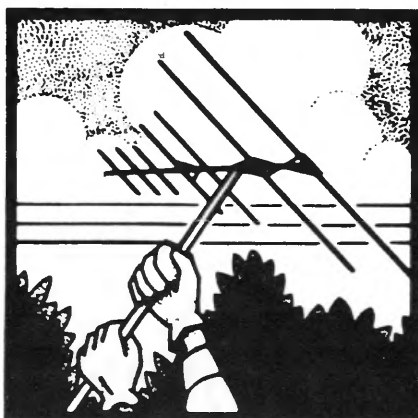
electrician to cut the seal on your meter, your Cooperative is to be notified in advance and an area lineman will be dispatched to take the necessary steps to cause this meter seal to be replaced and promptly resealed, however, permission must first be granted for the seal to be cut.

If you are planning electric changes, please make certain that proper arrangements have been made with your Cooperative in advance.

WHAT SOME PEOPLE FORGET ABOUT ELECTRICITY IS SHOCKING



Don't overload outlets



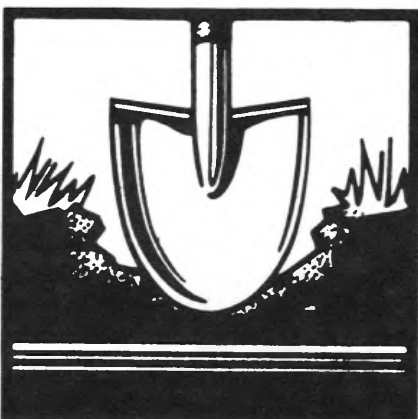
Antennas, ladders can contact danger



Electricity and water don't mix



Don't climb trees near overhead lines



Locate underground lines before you dig



Stay away from fallen overhead lines



Looking over examples of proper wiring techniques for farm buildings are Doug Carolus, left, and Dick Hiatt. Carolus, an employee of Illinois Power Company, is chairman of the IFEC environmental control committee. Hiatt is on the staff of the Association of Illinois Electric Cooperatives.

Proper wiring a key to efficient electricity use in farm buildings

Each American farmer produces enough food for himself and about 80 other people, thanks in no small way to the efficient use of electricity. That efficiency includes proper wiring.

"Back before they had electricity on farms," said Roland Espenscheid, a University of Illinois agriculture engineering professor, "farmers tipped a bushel basket of corn over the fence to feed their hogs and carried feed to cattle in buckets. Operating that way, each farmer could produce enough to feed himself and about 10 other people." Espenscheid was speaking in June to those attending a special seminar on agriculture building wiring at Lincoln Land Community College in Springfield.

While electricity has brought increased productivity to agriculture, farm wiring presents many problems that are alien to residential or light commercial structures, Espenscheid added. The workshop, sponsored by

the Illinois Farm Electrification Council, was designed to acquaint power use-member service advisers with the problem and possible solutions.

The main thrust of the seminar dealt with wiring in "hostile environments," especially in the ammonia-laden and highly corrosive atmosphere in livestock confinement buildings.

"A carefully installed system of metal conduits and junction boxes that might well last the life of a farm shop or equipment shed would do well to last five years in a hog confinement building," noted Duane Crisp, manager of engineering for Chore-Time Equipment Company, a manufacturer of livestock feeding machinery and life-support equipment for confinement buildings. "We favor plastic in the livestock environment," he continued, "while metal may be just fine for shops or grain handling equipment."

Speakers generally noted that a lack of awareness has been a big part of the

problem. Since confinement livestock production grew so quickly, many buildings are relatively new. Corrosion is just now reaching really serious proportions.

Manufacturers have been quick to respond to the need for corrosion-resistant hardware, and part of the seminar was given over to demonstrations and exhibits of plastic fixtures and heavily plated metal hardware, much of which have come on the market recently, while some have been "borrowed" from marine or other heavy-duty product lines.

Don Davis, personal line loss control coordinator for Country Mutual Insurance Companies, discussed wiring from an insurer's viewpoint.

"There are some really bad wiring situations on Illinois farms," he said, "and many of them are because farmers did their own wiring and either didn't know how to do it right or cut corners here and there. Many dangerous situations have cropped up

WHEN YOU NEED MORE SPACE

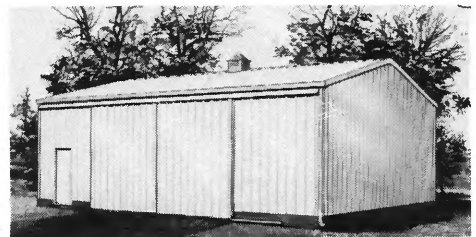


Sooner or later, just about every homeowner runs out of places to put things. Fortunately, it's a problem your local Bonanza Builder can help with, because he's had plenty of experience helping other people build a little extra storage space into their lives. Whether you need a simple garage for storing an assortment of family cars, plus some extra room for tools and yard equipment, or a larger utility building to house a workshop, hobby center, recreational

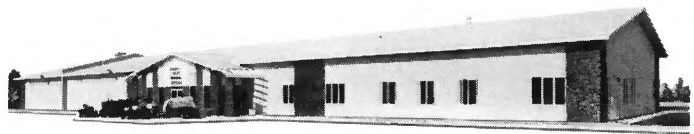
what you want.

These beautiful, maintenance-free SpaceMaker buildings are tough, durable Uni-Frame construction, with attractive, colorful Uni-Rib steel siding. Backed by a full 5-year written warranty on materials and workmanship. Check out the great variety of sizes, plans and layouts available.

Unclutter your life; call Bonanza today.

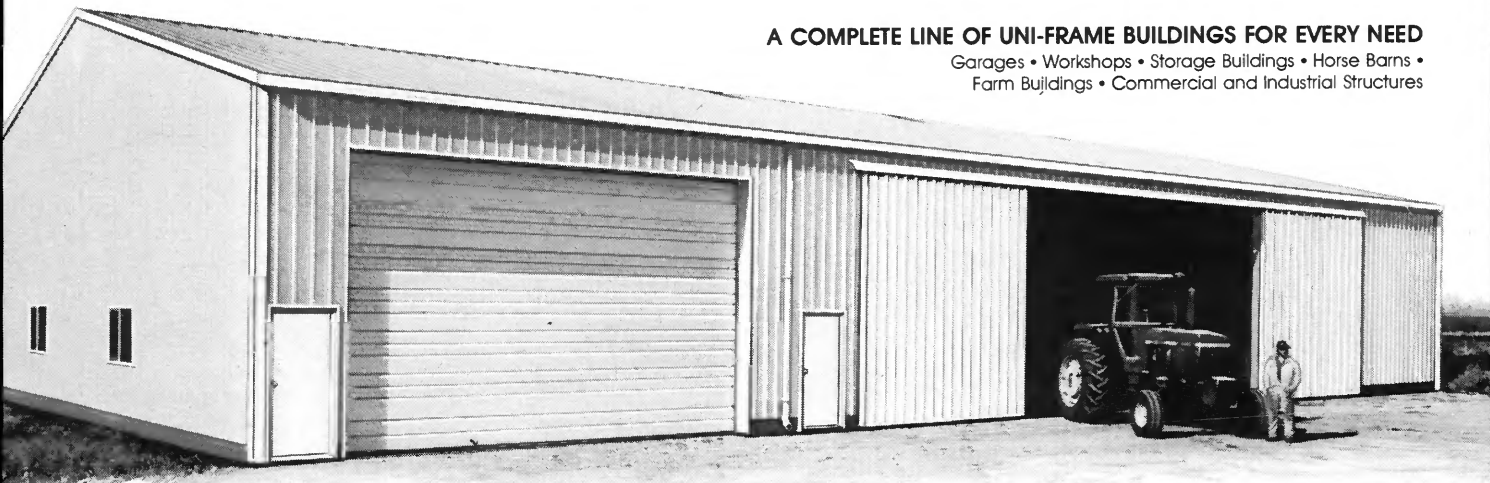


vehicles, boats, implements and the like, **BONANZA HAS THE PLACE** Bonanza has exactly



A COMPLETE LINE OF UNI-FRAME BUILDINGS FOR EVERY NEED

Garages • Workshops • Storage Buildings • Horse Barns • Farm Buildings • Commercial and Industrial Structures



Bonanza Builders Conveniently Located Throughout Illinois

TRIPLE T CONST. CO.
Box 665, Sesser, IL 62884
(618) 625-6381

DIVERSIFIED INDUSTRIAL SERVICES
P.O. Box 553, East Moline, IL 61244
(309) 755-6966

ROBERT E. LEE, BLDG. CO., INC.
109 E. Hydraulic, Box 148, Yorkville, IL 60560
(312) 553-0011

J.C. CATES CONST. CO.
Route 1, Box 113, West Paducah, KY 42086
(502) 443-8562

MOORE BUILDING CO.
West Route 316, Box 27, Charleston, IL 61920
(217) 348-8135

MOORE BUILDING CO.
Box 40, E. Rte. 104, Auburn, IL 62615
(217) 438-3336

ENGINEERED STEEL BLDGS., INC.
107 So. Main St., Columbia, IL 62236
(618) 281-5600

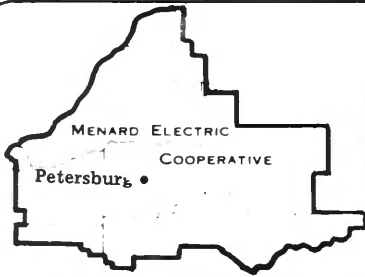
CALL TOLL-FREE (24 hours, 7 days)
1-800-821-7700, Ext. 307
or Mail Coupon Today for More Information



BONANZA BUILDINGS

Bonanza Buildings, Box 9, Charleston, Illinois 61920

Name	ILRE
Address	
County	
Town	
State	Phone
Check Interest: <input type="checkbox"/> Machinery Storage <input type="checkbox"/> Utility/Garage	
<input type="checkbox"/> Dairy <input type="checkbox"/> Horse <input type="checkbox"/> Hog <input type="checkbox"/> Beef <input type="checkbox"/> Business Buildings	
<input type="checkbox"/> Send information on selective Buildership opportunities.	



Menard Electric News

MENARD ELECTRIC COOPERATIVE 217-632-7746 PETERSBURG, ILLINOIS 62675

Co-op Comments

Carl T. Atterberry completed 35 years of employment with your Cooperative September 7. Carl is the general foreman for your Cooperative.

Mr. and Mrs. James Graff, of rural Middletown, celebrated their 35th wedding anniversary on September 12. Mr. Graff is a director of your Cooperative and serves the board as treasurer.

To report outages during normal office hours, please call area 217/632-7746. For outages which occur after 4:30 p.m. Monday through Friday and on weekends, please call area 217/632-2311. The Cooperative will accept collect calls on outages only.

Cooperative members can assist the meter reading contractors by making sure that access to all meters is readily available. Please make sure that weeds, brush, and debris are not allowed to accumulate at or near your electric meter.

The meter reading contractors will be reading all Cooperative meters on September 17, 19 and 20. The cooperation of Cooperative members with guard dogs and/or locked gates is requested so that our contractors can accomplish their job in the least amount of time. Meter reading dates for October will be the 19th, 20th and 21st.

Energy bills are rendered on the last day of each month and are due and payable upon receipt. Payment of the energy bill, if received by the 21st of the month is considered to have been paid within the due date. Payments received after the 21st will have a reminder fee of \$1 added thereto. Reminders are mailed two days after the due date and the notice fee is

reflected thereon. You may avoid the additional notice fee by having your energy payment in the Cooperative office not later than the 21st of each month.

Heat pumps

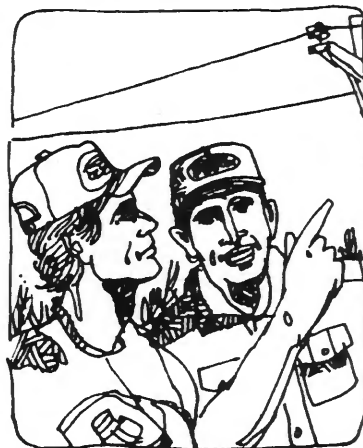
Savings are always in season with a heat pump. If your furnace is facing its final days, we recommend you explore the possibility of replacing the worn out furnace with a more efficient heating system. The installation of an efficient electric heat pump now will pay

dividends in the years ahead. A popular improvement to existing forced air heating systems is the installation of an add-on electric heat pump.

Regardless of whether your furnace is gas, oil fired, or resistance electric, when it's too cold for the heat pump (below 20 degrees F or so) your existing furnace will provide the heat. When it is above 20 degrees F the efficient heat pump will provide you with the necessary warmth at a more economical cost. Yes, in the summer it reverses its cycle and cools your home as any air conditioner will do.

Think 'safe' Responsible electric accident control today

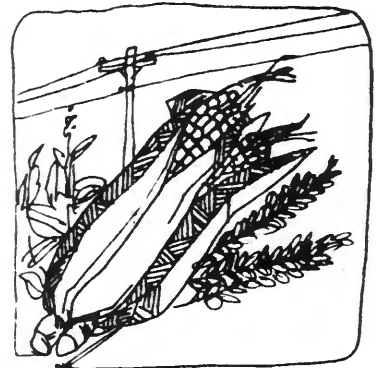
The accident you avoid is as important as the ones that really happen

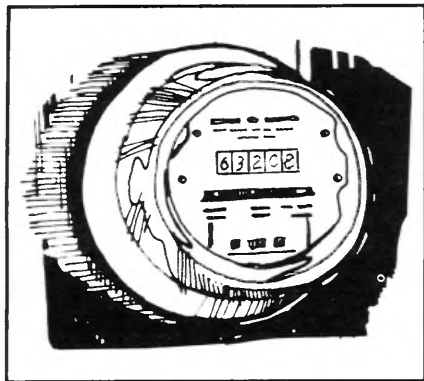


No scene depicts the character and success of the United States quite as well as that of modern farm equipment harvesting an abundant crop of wheat or barley or corn. The technology and ingenuity of those machines has helped the American farmer continue to enjoy bountiful harvests to feed our nation's population and a great portion of the world's population as well. When you move into your fields to tend your crops, please exercise Responsible Electric Accident Control Today (RE-ACT) to make your harvest as safe as it is rewarding.

Modern farming requires the use of large, complex machinery. Each year a tragic number of accidents are caused by careless handling of farm equipment around electric power lines. Your power supplier urges you to use caution at all times - to watch for overhead power lines and utility poles and to avoid any contact with this potentially lethal power equipment.

Insist that hired hands and family members alike learn to survey their working areas carefully before engaging farm equipment in work activities. Have every worker assure himself that the equipment he is using will not come into contact with power lines or power support equipment.





How to figure cost of operation

Occasionally you might wonder how much electricity an appliance uses, and how much it costs to operate. Perhaps you want to know this before buying an item. Or perhaps you would like to identify where your monthly electricity is going.

Determining the operating cost of electrical appliances is really quite simple, if you understand some basic electrical terms and a few simple factors.

First of all, the basic terms:

A watt is a measurement of electricity. Appliances, light bulbs and most electrical equipment are usually labeled with the amount of watts they use. A kilowatt is 1,000 watts (kilo is

1,000). A kilowatt-hour (kWh) is 1,000 watts used for one hour. For instance, a 100-watt bulb used 10 hours equals one kWh.

The factors that must be known are: (1) the wattage of the appliance; (2) the number of hours it operates; and (3) your cost of electricity.

The wattage of appliances or electric equipment varies greatly. Usually this figure can be found on the serial plate or wherever pertinent information is given. Sometimes the electrical requirements of a particular appliance may be expressed in volts and amperes, rather than watts. If so, multiply the number of volts times the number of amperes (120 volts x 4 amp. equals 480 watts).

Once you know the number of watts, you multiply this by the number of hours the appliance is on and divide by 1,000. Then you take the cost of a kilowatt-hour of electricity from your monthly bill, and multiply this by the result of the above formula.

For instance, say you have a television set that is rated at 250 watts, and is used an average of four hours a day — about 120 hours (4 x 30) a month. Using the formula, 250 watts times 120 hours is 30,000. Divide by 1,000 and you have 30 kilowatt-hours used in a month by this TV.

Trees and power lines don't mix

Just about everybody likes trees — and just about everybody needs electricity. But some people don't like the power lines that bring electricity to them — especially when it becomes necessary to trim or remove trees so they don't interfere with power lines.

It is a sad fact that trees and power lines do not coexist comfortably. If a branch is near a line, that's fine. If the tree or branch is too close, that's not so fine. Here's why: If a branch is near a line and falls into it, you and your neighbors could be without electricity for several hours or more.

Even if a branch does not fall, but only touches lines because of windy conditions or ice, it can mean the temporary interruption of electrical



service, sometimes over a fairly large area.

In each electrical circuit there is a device called a circuit recloser.

When a branch touches the power

Why line is busy during outages

ME

Occasionally, our members express concern about when they call to report a power outage and the line is busy. It is very frustrating to experience this, and thoughts run through your minds that the phone is off the hook or the line has somehow been placed in the busy signal position. After an hour of calling, your frustration level has increased and probably turned to anger. You are in need of help, you're calling to report a power outage and no one is helping you! Why?

Your call goes to one of three incoming phone lines. If a power line is out, the phone line may be busy as everyone who is at home attempts to notify the cooperative. When a major line or substation that serves as many as 1,000 people is out, the problem is compounded and you will still receive a busy signal, more than likely, due to the volume of calls received.

Remember the busy signal the next time you and your neighbors are out of power. Don't give up calling. We want to hear from you. We have had instances where everyone on the line thought that their neighbor had called in and no one had.

Your cooperative apologizes for the inconvenience you may experience from a power outage. We are at the other end of the phone doing everything possible to restore your power in the safest and quickest manner possible.

lines, shorting out a circuit, the recloser will temporarily break the circuit — this temporary break prevents a more permanent break by getting rid of a short term overload.

You may have noticed that your lights will blink occasionally during a storm. This is the recloser in operation. It will break a circuit, temporarily, three times. On the fourth time, it breaks the circuit permanently — until a serviceman resets it manually.

Clearing right-of-way is expensive and we'd rather not have to do it, partly because we like trees, too.

But do it we must — to ensure that you can depend on having electricity most of the time — even during bad weather!

Tasty fare for a crisp autumn day

PORK CHOPS WITH MUSHROOM GRAVY

- | | |
|--|---------------------------------|
| 4 pork chops, 1-inch thick | 1/2 cup chicken broth |
| 2 tablespoons cooking oil | 2 tablespoons all-purpose flour |
| 1 cup sliced fresh mushrooms
(or drained canned ones) | or 1 tablespoon corn starch |
| 1/2 cup chopped onion | 1/4 teaspoon salt |
| 3/4 teaspoon Worcestershire sauce | 1/4 cup cold water |
| 1/2 teaspoon dried tarragon, crushed | 1 tablespoon snipped chives |
| Salt and pepper | |

In 12-inch skillet, brown chops on one side in hot oil. Turn; add mushrooms, and onion and brown on other side. Season with salt and pepper. Add chicken broth, Worcestershire sauce, tarragon, and the 1/4 teaspoon salt. Cover and simmer 35 to 40 minutes. Remove chops to serving platter. Keep warm. Spoon fat from juices. Measure vegetable juice mixture, reserving 1 1/4 cups. Combine cold water and flour. Stir into juices in skillet; add chives. Cook and stir until thick and bubbly. Cook 2 minutes more. Spoon over chops. Garnish platter with cherry tomatoes. Makes 4 servings.

CHICKEN RAVIOLI

- | | |
|-------------------------------|-------------------------------------|
| 1 pkg. noodles | 1 medium onion, chopped |
| 3 cans cream of mushroom soup | 2 tablespoons chicken fat (or oleo) |
| 1 hen or 2 fryers | 1/2 lb. grated cheese |
| 1 green pepper, chopped | 1 small can pimento |

Cook hen, remove meat from bone and cut into bite size pieces. Sauté onion and pimento in chicken fat. Cook noodles in chicken broth, add a little water if needed. Combine all ingredients, place in large casserole and cover with grated cheese. Bake at 400 degrees until mixture is hot through and cheese is melted.

RED HOT SQUASH CASSEROLE

- | | |
|-------------------------------------|--|
| 6 to 8 medium yellow squash, sliced | 1/4 lb. Velveeta cheese |
| 1 large onion, chopped | 2 tablespoons milk |
| 1 teaspoon salt | 1 or 2 Jalapeno peppers, seeded and minced |
| 1 teaspoon sugar | |
| Paprika | |

Boil squash and onion in water with salt and sugar until done. Drain well in a colander and pour into a 1-quart casserole dish. Make a sauce of cheese and milk; pour over squash; add peppers; mix well. Garnish with paprika. Heat in 350-degree oven uncovered for 20 to 30 minutes, or until thoroughly hot.

CHEESE-STUFFED PEPPERS

- | | |
|--|----------------------------------|
| 1 pkg. (3 oz.) cream cheese (softened) | 1/4 cup shredded carrot |
| 2 tablespoons oleo (softened) | 1 medium green pepper |
| 1/2 cup shredded cheddar cheese | 4 large slices rye bread, halved |
| 1/4 cup diced celery | |

In small bowl, cream cheese with oleo until blended. Stir in cheddar, celery and carrots; mix well. Cut stem end from pepper; remove seeds. Pack with cheese mixture. Chill overnight. Slice thin and arrange on bread halves. Cut each half in two. Makes 16 pieces.

TOMATO RELISH

- | | |
|---|-----------------------------|
| 20 cups ripe tomatoes, peeled and cored | 1/2 cup hot peppers chopped |
| 8 onions chopped | 3 cups sugar |
| 8 bell peppers chopped | 3 cups vinegar |
| 6 tablespoons salt | 1/2 box pickling spices |

Chop, mix and cook slow after reaching boiling point, for two hours. Stir often, place in jars and seal.

CHICKEN LIVERS PEKING

- | | |
|--|---------------------------------------|
| 1 lb. chicken livers, cut up | 1/2 cup chicken broth |
| 2 tablespoons oleo | 2 tablespoons soy sauce |
| 2 tablespoons chopped onion | 1 tablespoon cornstarch |
| 1 (3 oz.) can sliced mushrooms | 1/4 teaspoon ground ginger (optional) |
| 2 (10 oz.) pkgs. frozen Chinese vegetables with seasoned sauce | |

In large skillet, cook livers in oleo till just brown; remove from pan. In same skillet, cook onions until tender. Add Chinese vegetables with sauce, undrained mushrooms, and 1/4 cup of broth. Cover and simmer until vegetables are thawed, about 3 minutes. Stir to break up sauce cubes. Simmer, covered about 5 minutes or till tender. Stir together remaining broth, soy, cornstarch and ginger. Add to vegetables, cook and stir until bubbly. Add livers; heat through. Serve over hot cooked rice. Makes 6 servings.

SWEET POTATO PIE

- | | |
|--|-----------------------|
| 2 1/2 cups cooked mashed sweet potatoes | 1 teaspoon vanilla |
| 4 eggs slightly beaten | Dash of salt |
| 2 1/2 cups sugar | 1 can Dime Brand milk |
| 1 teaspoon nutmeg (optional or other spices if you wish) | 1 stick oleo, melted |

Mix and pour into unbaked pie shell. Bake at 350 degrees until filling sets. Chill and serve. May be frozen for later use if only baked half brown.

ORANGE SHERBERT

- | | |
|---|-------------------------|
| 64 oz. bottle orange drink | 2 cans Eagle Brand milk |
| 1 small can (8 1/2 oz.) crushed pineapple (drained) | 1/4 cup sugar |

Mix all the above ingredients together and pour into freezer and freeze.

COCONUT MOUNDS

- | | |
|---|---|
| 3/4 cup mashed potatoes, prepared from instant potatoes | 1 (12 oz.) pkg. semi-sweet chocolate pieces |
| 1 lb. confectioners sugar | 2 (1 oz.) squares semi-sweet choco'ate |
| 1 lb. pkg. unsweetened coconut | 1 oz. square paraffin wax |
| 1 teaspoon almond extract | |

Combine potatoes, sugar, coconut, almond extract in a large bowl. Mixture will be stiff and needs to be worked with hands. Form mixture into 3/4-inch balls and place on cookie sheet. Chill about 6 hours. Place chocolate pieces and squares and paraffin in top of double boiler over hot (not boiling) water stirring until melted. Remove from heat and with toothpick dip each ball in chocolate until coated. Place on cookie sheet and chill again until hard. Place or pack on or between wax paper and store in cool dry place. Makes 3 pounds.

Your Own
Custom Home
\$271⁵⁵
PER MONTH



(The Eisenhower - 1 of 63 basic models in '83 catalog.)

WRITE FOR YOUR LOCAL
PRESIDENT HOMES REPRESENTATIVE

PRESIDENT HOMES

4808 N. Lilac Dr., Minneapolis, MN 55429 (612) 537-3622

NAME _____
ADDRESS _____
CITY _____ STATE _____
ZIP _____ PHONE _____

Custom Built Pre-Cut Homes...Our Only Business Since 1952

IL-30

10 REASONS TO BUILD A PRESIDENT HOME NOW!

1. Own your own home for as little as \$271.55 per month, based on 180 equal monthly payments, not including taxes and insurance.
2. Cash price is as low as \$23,371 and includes all finishing materials, cabinets, heating, electrical, and plumbing systems.
3. Own your own home free and clear in 10 or 15 years.
4. We finance everything we furnish and do.
5. Down payment as low as \$100.
6. Low 11.4% Annual Percentage Rate financing in a conventional fixed-rate mortgage.
7. Use or alter one of our 63 plans or design your own.
8. Firm prices include all materials delivered to job site.
9. No hidden costs. No closing costs. No prepayment penalty.
10. We rough-erect your home on your lot and foundation. You do the easy finishing work and save thousands of dollars.

Division of
Harvey Builders, Inc.

SUN-UP

SOLAR PRODUCTS
ARGENTA IL 62501

Save up to 2/3 on your hot water bill! Write for free pamphlet about our "Batch" style solar water heater.

GARDENING?

NEW TIGER
TILLER

TILLS KNEE DEEP! ... WEEDS SHALLOW
RUNS SINGLE HANDED ... MAKES SOIL
WEED FREE FAST ... WITHOUT HARD WORK.



Weights 22 Pounds
Gasoline Powered



Tills Deeper Than
Other Tillers Do



Weeds Fast from
12 to 2 In. Wide

NOT SOLD IN STORES ... FREE GARDENING GUIDE

WRITE TO: ALLENTOWN TILLER CO., DEPT. 45
c/o Allentown Feed Co., Main St., Allentown, N.J. 08501

For Rush Mailing of Literature call
Ask for Betty Allen ... **201-530-9380**

electricians borrow most of their funds for construction from a revolving fund in the federal Rural Electrification Administration. Legislation establishing this fund in 1973 fixes the interest rate for most loans at 5 percent, and permits 2 percent in some hardship cases. When the fund was created, its assets were commitments of rural electric and telephone co-ops to repay previous REA loans, and the agency's cash on hand.

Dollars to lend were obtained by pledging the fund's assets and borrowing from the U.S. Treasury at going market interest rates. As the cost of money escalated in recent years, while the agency's lending rates remained fixed, the dollars of interest income at 5 percent were significantly short of the interest expense, which sometimes climbed as high as 15 percent. The excess of outgo over income promised that in time the body of the fund would have been eaten away in payments to make up the difference.

After a two-year study, the rural electric cooperatives decided they would need to face up to higher interest payments in order to preserve their principal borrowing source, the revolving fund. They took the lead in developing legislation which authorizes the REA Administrator to adjust the interest on revolving fund loans whenever necessary to keep the fund stable.

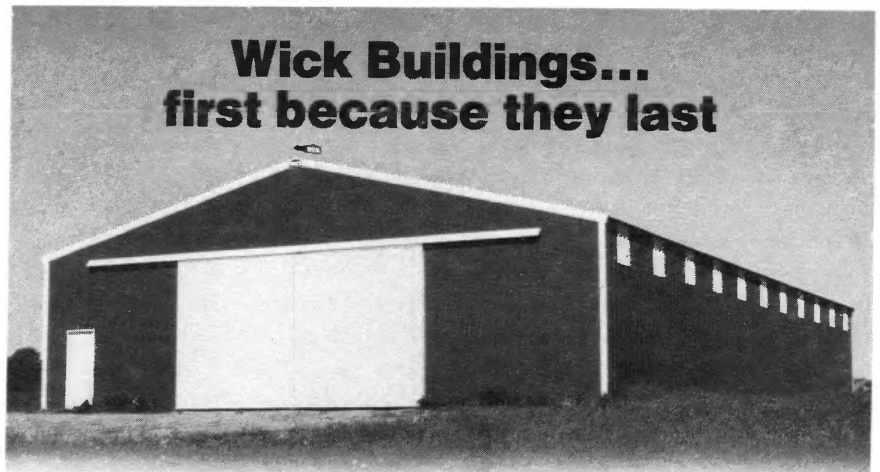
Companion measures were introduced in both houses of Congress: S.

Zorinsky said. "We have a well-thought-out plan that has been studied for almost two years. It asks for no quick-fixes or crash programs, but a simple, sensible solution to maintaining one of the most successful programs this government ever created."

The legislation also provides that the Treasury obligations now comprising the assets of the fund will be converted to permanent capital. This still requires that all rural electric loans must be fully repaid, plus interest, but

calls for such dollars to be held in the revolving fund rather than the Treasury and keeps them available for further lending.

The bills also would authorize future refinancing of revolving fund borrowings from the Treasury, and of a different type of loan used chiefly by the cooperative producing electricity for wholesaling to the distribution organizations. This would permit substantial interest savings at times when rates drop.



Wick Buildings... first because they last

Quality Engineering • Quality Materials • Quality Completion

- A wide range of agricultural buildings
- Solar buildings
- Horse barns
- Livestock confinement buildings
- Commercial and specialty buildings
- Exclusive Country Gentleman design



Wick Buildings®

A product of Wick Building Systems, Inc.
...offering the solar advantage!

Mazomanie, WI 53560 • Adair, IA 50002



1300 by Kentucky Sen. Walter Huddleston, and H.R. 3050 by Tennessee Rep. Ed Jones. At last count, several weeks ago, they had been joined in sponsorship by 37 senators and 145 representatives.

"It is a tribute to the rural electric systems of the country that we have this proposal before us now," Senator

For new building design and pricing information, call your nearest Wick Buildings dealer listed below or phone toll free 1-800-356-9682, weekdays

(In Wisconsin call 1-800-362-5457)

ILLINOIS

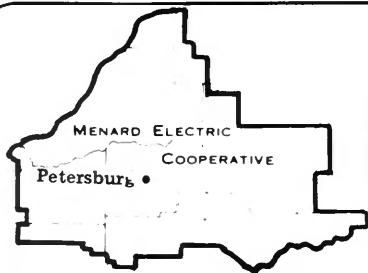
Arthur Enos Helmuth & Sons • 217-543-2298
Ashton Consol Builders & Supply
 815-453-2442
Bloomington Siron Sales & Service, Inc.
 309-663-0331
Carlinville Donald Bacon • 217-627-2297
Carrollton Jim Parkinson • 618-576-2287
Cissna Park Siron Sales & Service, Inc.
 815-457-2134
Danville Carl Wise • 217-776-2462
Effingham Curtis-Jansen • 217-342-2159
Eureka Dan Wiegand, Jr. • 309-467-4527
Hardin Bill Parkinson • 618-576-2287
Highland Curtis-Jansen • 618-654-9807
Lena Freeport Builders • 815-563-4211
Lindenhurst Don Jackson • 312-356-10004
Lyndon Dale Woodworth • 815-778-4469
Marion Glenn Hudgens • 618-993-5560

Mason City W.A. Grandy Co./
 Ken & Jerry Harnacke • 217-445-2481
Mazon J.R. Enterprises • 815-448-2406
Metropolis Koch Brothers Builders
 618-524-4565
Monmouth Phil Britt • 309-734-6458
Paris Wilson Contracting • 217-275-3411
Princeville Paul Steitmatter • 309-385-4848
Quincy Thompson Builders • 217-223-4060
Royalton Robert Smith • 618-984-4470
Spring Valley Malooley Brothers
 815-664-2353
Taylorville Melvin Krutsinger • 217-543-3609
Wataga Harold Bramlett • 309-375-6470
Waterman Little Enterprises • 815-264-3302
West Salem George's Farm Supply
 618-456-8461

WISCONSIN

Genoa City Chuck Schuren
 414-279-5424 or 312-426-5040

Selected dealer territories available. Contact: Wick Buildings, Mazomanie, WI 53560



Menard Electric News

MENARD ELECTRIC COOPERATIVE 217-632-7746 PETERSBURG, ILLINOIS 62675

Co-op Comments

Phyllis McCoy, rural Petersburg, will complete 15 years of service with your Cooperative on November 4. Phyllis is a records clerk in the Petersburg office.

Mr. and Mrs. Donald Riser, Manito, will celebrate their 10th wedding anniversary on October 27. Don is the area serviceman in the Manito-Forest City area.

Mr. and Mrs. Charles McMillan of rural Williamsville will celebrate their 40th wedding anniversary on November 12. Mr. McMillan is a director of your Cooperative, representing District No. 9, which is the eastern section of the Cooperative service area.

In 1960, one-fifth of all the energy used in the United States went into generating electric power. By 1970, this electric portion was one-fourth

and in 1982, it had risen to one-third.

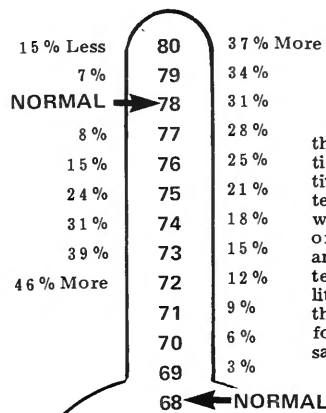
From California comes word of a couple offering their \$400,000 dream home for sale because of the noise from a nearby wind turbine was "driving them nuts."

A USDA chart shows LP, natural gas and electricity prices climbing at approximately the same rate.

The FCC recently decided to require all telephone subscribers to pay monthly fees to have access to the long distance telephone network whether or not they make any long distance calls. The fees are expected to at least double the cost of having telephone service by 1989.

REA Administrator Harold Hunter and other officials argue that people who live in rural areas should expect to pay more for their electricity.

If you figure your thermostat setting doesn't matter much, check these figures:



The sure way to conserve.

With nearly 70% of every energy dollar going for heating and cooling, your thermostat can be a very effective energy saving device. By dialing up in summer and down in winter, you are sure to conserve. And this is one conservation measure you can begin right away. There's nothing to buy, nothing to install.

COOLING HEATING

QUIZ The price of electricity

To help you put your electric bill into perspective, try the following quiz:

1. To begin, write down your largest electric bill during the past year. To be sure, check the stubs from your billing slips. Write that amount below:
\$ _____

2. Now, make a general list of all the things in your home that run on electricity. Check those items below that you have, and add more as you think of them.

- | | |
|------------------|--------------------|
| refrigerator | stereo |
| freezer | lamps (count them) |
| water heater | heating pad |
| television | electric blanket |
| washer | coffee maker |
| dryer | slow cooker |
| blender | microwave oven |
| toaster | hair dryer |
| dishwasher | electric knife |
| range | humidifier |
| air conditioner | dehumidifier |
| heat pump | oven |
| hairsetter | radios |
| shaver | clocks |
| timers | welder |
| popcorn maker | grain dryer |
| mixer | fence |
| sewing machine | auger |
| electric skillet | iron |
| water pump | adding machine |

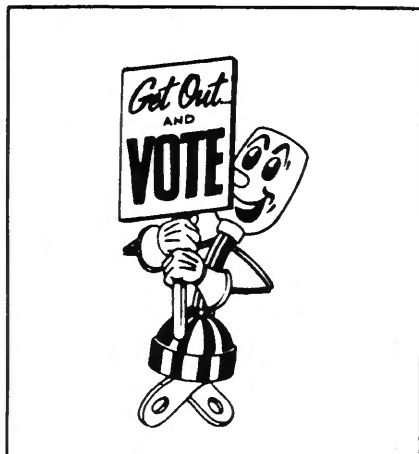
If you really survey your home, you will come up with at least 100 and maybe 200 items. Think now... have you listed everything? Does this list surprise you?

3. There are 30 days in a month (average), so divide the amount of your highest bill by 30. Write that amount below:
\$ _____

4. How many are in your family? Divide the above figure by the number of people living in your home. Write that amount below:
\$ _____

The amount you now have is what your electricity costs you per day per family member. That's what you pay for all of the above services each day!

Just compare that figure to the price of a pack of cigarettes or gum. Is it worth it?



Wind experience

A \$30 million experimental windmill brought a high bid at auction recently of \$51,600 from a textile company that plans to dismantle the massive machine.

Mac Bess Industries, Inc., of Bessemer City, N.C., was the high bidder and will use the generator from the windmill to reestablish a company-owned hydroelectric facility in North Carolina.

The rest of the device, complete with 97½-foot blades, will be disassembled and given to Georgia Tech for use in radar research. The windmill was originally constructed to generate 2,000 kilowatt-hours of electricity, but seldom worked, a U.S. government spokesman said.

Construction begins on Barclay substation

Western Illinois Power Cooperative has started construction on the Barclay substation which will be located approximately 1½ miles north of Barclay.

Your Cooperative has started new line construction out of the proposed substation site and it is hoped that the substation, as well as the feeder lines, will be completed by May of 1984. Upon completion, the new substation will provide adequate and improved voltage in the south and eastern portions of the Cooperative service area.

The new station will take some of the load off the Lanesville and Athens substations.

Construction of a new feeder line out of the Poplar City substation, northeast of Kilbourne, will begin this fall. In addition, preliminary engineering work is progressing on a new feeder line out of the Virginia substation, which will provide improved voltage in the Beardstown area.

All of the line construction is currently being done by the Cooperative line crew.

YOUR OPINION PLEASE:

In planning the next annual meeting of the Cooperative, the following type of program is suggested.

Speaker:

- Humorous
 Informative

Musical Program:

- Chorus
 Country-Western
 Other Musical groups

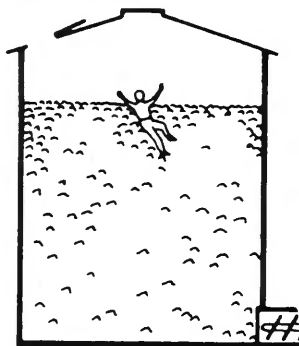
Magician:

Other, specify: _____

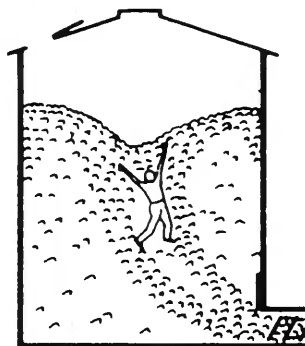
(Please clip and return this coupon.
We will appreciate your response.)

Don't die in the grain bin

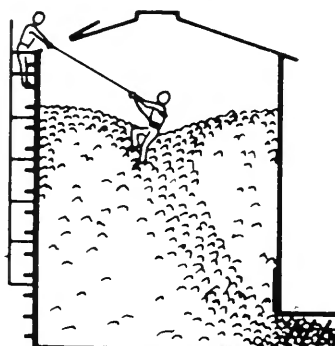
Follow safety rules



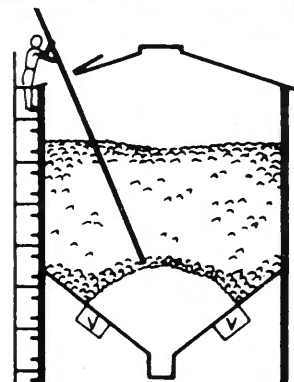
Grains are dangerous as quicksand even when not unloading.



Flowing grain sucks you under suddenly when unloading starts.



If you must go into the bin, use a lifeline and have someone there.



Break bridges with a pole. Use vibrators to keep grain flowing.

ENCHILADA CASSEROLE

- 1 1/2 lbs. ground beef
- 1 onion (I use dried onion)
- 1 can mushroom soup
- 1 can cream of chicken soup
- 9 oz. taco sauce (mild)
- 12 soft corn tortillas
- 1 lb. grated Cheddar cheese

Salt and pepper to taste
Brown meat and onions. Drain off excess fat and add soups and taco sauce. Simmer a few minutes. Grease large pan and line with half of the tortillas. Layer cheese and meat and tortillas. Top with cheese and bake at 350 degrees. Serves 6-8.

PATIO FREEZE

- 1 cup sugar
- 1 No. 2 can crushed pineapple and juice
- 2 cups mashed bananas
- 2 tablespoons lemon juice
- Dash salt
- 2 cups orange juice

Combine all ingredients in blender and freeze in oblong pan, muffin cups or trays.

TOUCHDOWN CHILI DIP

- 1 onion, chopped
- 1 green pepper, chopped
- 2 tablespoons butter, melted
- 1 can chili without beans
- 1 can cream of mushroom soup
- 3/4 lb. cubed sharp Cheddar cheese
- Corn chips

Saute onion and green pepper in butter until onion is clear. Stir in chili and soup. Blend well. Add cheese, heat until partially melted. Pour into chafing dish; serve with corn chips. 12 servings.

COCKTAIL MEATBALLS

- 3 lbs. hamburger
- 3 eggs
- 1 1/2 teaspoons red pepper
- 1 tablespoon garlic powder
- 1/2 cup Worcestershire
- 1 long, narrow pkg. soda crackers
- 1 bottle Kraft hot barbeque sauce
- 1 bottle Kraft hickory smoke sauce

Beat eggs with mixer, add spices. Crush crackers with rolling pin and add to eggs and spices. Add hamburger and mix with hands until well blended. Shape into small balls. Brown in oil. Drain and freeze in tightly-covered container until ready to use. Pour both bottles of sauce over and heat in oven. Can be used immediately instead of freezing.

CHICKEN SAUSAGE GUMBO

- 2 chickens, skinned, cut-up
- 2 or 3 lbs. sausage
- 1 whole stalk celery
- 4 onions
- 1 bell pepper
- 1 cup flour
- 1 cup oil

Make a roux of flour and oil by putting in microwave 3 minutes or until it turns brown. Saute vegetables in roux 15 minutes. Put into pot with chicken and sausage. Add 1 quart water or more. Cook 1 1/2 to 2 hours, skimming off excess grease. Season with salt, pepper, red pepper and garlic before putting in pot. When chicken falls off bone, it's done. Serve over rice with garlic bread to 8.

LASAGNA

- 1 pkg. lasagna noodles
- Cheeses: mild Cheddar, sharp Cheddar, Parmesan, Mozzarella (1/2 to 3/4 lb. each)
- 2 jars Italian Ragù (mild) cooking sauce
- 1 large jar Italian sauce flavored with meat
- 1 chopped onion
- 1 lb. ground beef

Brown meat with chopped onion. Put garlic powder, salt and pepper on this while browning. Add sauces to mixture. Cook noodles. In large pan put a layer of sauce on bottom. Then layer with noodles and cheese, add 1/2 sauce and then repeat. Bake at 350 degrees for 30 to 45 minutes.

BUTTERMILK PECAN CHICKEN

- 2 fryers, cut up
- 1/2 cup margarine
- 1 cup buttermilk
- 1 egg, beaten
- 1 cup flour
- 1 cup ground pecans
- 1 tablespoon paprika
- 1 tablespoon salt
- 1/8 teaspoon pepper
- 1/4 cup sesame seeds
- 1/4 cup pecan halves (optional)

Melt margarine in large shallow pan. Mix buttermilk with egg in small bowl. Mix together flour, pecans, paprika, salt, pepper and sesame seeds in another. Dip chicken in buttermilk mixture, then in flour mixture. Place skin side down in melted margarine in pan; then turn to coat with margarine and leave skin side up. Place pecan halves on each piece if desired. Bake at 350 degrees for 1 1/4 hours, or until done and golden brown. Serves 8.

SPANISH CHICKEN

- 1 large pkg. taco-flavor Doritos
- 1 large boned chicken (chopped)
- 1 small onion
- 1 small can chopped chilies (opt.)
- 1 pkg. Cheddar cheese
- 1 can mushroom soup
- 1 can cream of chicken soup
- 1 can chicken broth
- 1 can Rotel tomatoes

Bring to a boil: soups, broth and tomatoes. Add onion, chicken and crumbled Doritos. Cover dish and bake 30 to 40 minutes at 350 degrees. Remove cover and top with grated sharp Cheddar cheese. Return to oven until cheese melts.

TUNA CASSEROLE

- 1 small pkg. shortcut elbow macaroni (8 oz.), cooked
- 1 small can tuna
- 1 can cream of mushroom soup
- 1/2 can milk (use soup can)
- 1/2 med. onion (grated)
- Garlic powder, if desired
- 1/2 bell pepper, grated
- 3 or 4 green onions, chopped fine
- Grated cheese (quite a bit)
- Salt to taste
- Pepper to taste (you may use red)

Cook macaroni as directed on package. Toss together all other ingredients while macaroni is cooking. (Leave cheese until last.) Add macaroni to mixture and top with grated cheese. Bake in oven at 350 degrees for 30 minutes.

STEAK MARINATE

- 1 tablespoon garlic salt
- 2 tablespoons celery salt
- 1 tablespoon dry mustard
- 1 dehydrated horse radish
- 1 tablespoon onion salt
- 2 tablespoons Accent or M.S.G.
- 1 tablespoon black pepper
- 1/2 cup vinegar
- 1 cup salad oil

Combine ingredients.

CABBAGE CASSEROLE

- 1 med. cabbage
- 1 lb. ground lean meat
- 1/4 cup green onions (chopped)
- 1 med. onion (chopped)
- 2 cloves garlic (minced)
- 1 10 1/2-oz. can mushroom soup
- 1 cup boiled rice
- 1/4 cup bread crumbs
- 1/2 stick butter or margarine
- salt and pepper to taste

Cut cabbage as you would to smother and boil in salted water until tender, but still green. Drain and reserve the liquid. Melt the butter in a deep skillet and fry meat with onion, garlic and seasonings until brown. Mix cabbage with meat. Add green onion, mushroom soup and boiled rice. Pour into greased flat pyrex dish. Top with bread crumbs and bake 20 to 30 minutes at 300 degrees. (Before baking if mixture appears dry add some of the water reserved from boiled cabbage.) Yield: 6-8 servings.

PENNSYLVANIA DUTCH PIE CRUST

- 3 cups flour
- 1 teaspoon salt
- 1/4 cups shortening
- 5 tablespoons water
- 1 egg
- 1 teaspoon vinegar

Sift flour and salt; cut in shortening until mixture resembles coarse cornmeal. Beat water, egg and vinegar together; stir in flour mixture. Shape into ball. Chill. Turn out on floured board, roll to fit pie pan. Bake for 10 to 12 minutes in 425 degree oven. Yield: pastry for two 2-crust pies.

DIXIE FUDGE CHESS PIE

- 1 1/2 cups sugar
- 1 stick butter
- 3 eggs (slightly beaten)
- 4 tablespoons cocoa
- 1 teaspoon vanilla
- pinch of salt

Mix sugar and butter. Add other ingredients. Pour in uncooked pie shell. Bake at 425 degrees for 10 minutes. Turn down to 350 degrees for 30 minutes.

VEGETABLE PIE

- 2-3 pie shell
- 2-3 small squash
- 1 bell pepper
- 1 med. onion
- fresh mushrooms—as desired
- 1 sliced tomato
- 1 cup mayonnaise
- 1 cup mozzarella cheese

Chop or slice squash, pepper, onion and mushrooms. Saute in butter and drain. Set mixture aside. Combine mayonnaise and mozzarella cheese together. Line pie shell with tomatoes; top with vegetables; then top with mayonnaise and cheese mixture. Bake at 350 degrees for one hour or until brown.

STIR-'N-DROP OATMEAL COOKIES

- 1 cup flour
- 1 teaspoon baking powder
- 1/2 teaspoon salt
- 1/2 teaspoon cinnamon
- 1/2 teaspoon ginger
- 1 cup brown sugar, packed
- 1 cup rolled oats
- 1/2 cup vegetable oil
- 2 tablespoons milk
- 1 egg
- 3/4 cup chopped walnuts

Pre-heat oven to 375 degrees. Lightly grease baking sheet. Mix first 5 ingredients together. Add brown sugar and oats. Mix well. Combine vegetable oil, milk and egg together and add to mixture. Stir in walnuts and drop dough by rounded teaspoons about 2 inches apart on baking sheet. Bake about 10 minutes. Cool on wire rack. Yield: 3 dozen.

GRAHAM CRACKER COOKIES

- FILLING:
- 2 sticks oleo
- 1/4 cups sugar
- 1 egg
- 1/2 cup Carnation milk
- 1 cup nuts
- 1 1/2 cups coconut
- 2 cups crushed graham crackers

- ICING:
- 1 1/2 sticks oleo
- 1 box powdered sugar
- 4 tablespoons Carnation milk
- 1 teaspoon vanilla

Take a large cookie sheet and place graham crackers on it all going same way. Then prepare filling. Melt oleo and add sugar, egg and milk. Bring to a boil, take off heat and add coconut, nuts and crushed graham cracker crumbs. Mix all together and spread on crackers on cookie sheet, then add another layer of graham crackers (same way as first). For icing, mix together ingredients and spread on top of crackers, cover and refrigerate for several hours. Then cut into squares.

YUMMY CHOCOLATE SHEET CAKE

- 1 stick margarine
- 1/2 cup oil
- 1 cup water
- 2 cups flour (self-rising)
- 2 cups sugar
- 1 teaspoon cinnamon
- 4 tablespoons cocoa
- 2 eggs
- 1/2 cup butter
- 1 teaspoon vanilla

Melt margarine, oil and water. Bring to a boil. Add flour, sugar, cinnamon and cocoa. Mix well then add remaining ingredients. Stir and pour into pan. Bake at 400 degrees for 20 minutes.

ICING

- 1/2 stick margarine
- 1/4 cup water
- 1 lb. box powdered sugar
- 4 tablespoons cocoa
- 1 cup nuts

Melt margarine and water. Bring to a boil and add remaining ingredients. Spread on top of hot cake.

OATMEAL CAKE

- 1 1/2 cups hot water
- 1 cup minute oats
- 1 cup white sugar
- 1 cup brown sugar
- 1/2 cup shortening
- 2 eggs
- 1 1/2 cups flour
- 1 teaspoon soda
- 1 teaspoon cinnamon
- 1/2 teaspoon salt

Pour hot water over oats. Let stand. Cream sugar, brown sugar, shortening. Beat eggs into mixture. Sift flour with soda, cinnamon and salt. Add to cream mixture. Then add oats. Beat well. Bake at 350 degrees for 35 minutes.

Hot Line School

(Continued from page 5.)

Distance is safety."

Safety is always in mind at the school, and one man's hard hat sported a sticker proclaiming, "If you love life, live safety." and Dave Deiderich and Jim Nevel of the AIEC Job Training and Safety Department made the rounds of the various work groups several times, making sure the

trainees did not pick up any unsafe habits.

While Diederich and Nevel were in overall charge of the school, several instructors from different cooperatives helped with hands-on work sessions, and Don Greene, job training and safety instructor from the Iowa Association of Electric Cooperatives, lent his expertise, too.

Cooperative instructors were: Al Becker and Delbert Boston, Rural Electric Convenience Cooperative Co., Auburn; Fred Boston, Western Illinois Power Cooperative, Jacksonville; Larry

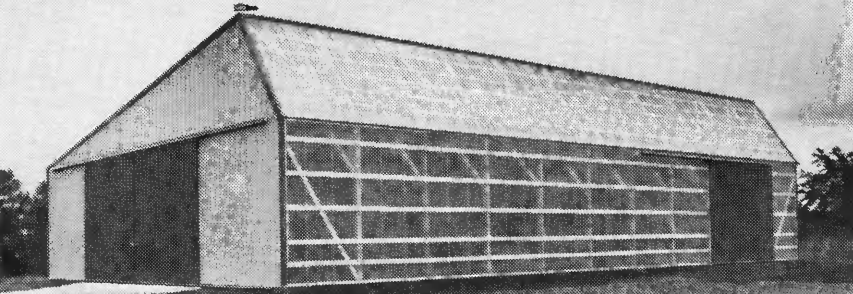
Carter, Illini Electric Cooperative, Champaign; Meredith Chrisman and Wendell Lettner, Coles-Moultrie Electric Cooperative, Mattoon; George Claus and Don Long, Illinois Rural Electric Co., Winchester; Daryl Douglas, Adams Electircal Co-Operative, Camp Point; Bruce Hill and Chuck West, Corn Belt Electric Cooperative, Bloomington; Richard Hilligoss, Lyle Kofoot and Larry Niccum, Eastern Illinois Power Cooperative, Paxton; and Gary Hissong, Southwestern Electric Cooperative, Greenville.



Regency Gowns
\$19.⁹⁵ up
EXPERT TAILORING
 Finest Fabrics, including Permanent Press and Wash and Wear. Superior Quality. Guaranteed Satisfaction. Free Color Catalog and Fabric Swatches on Request.


REGENCY
 CAP & GOWN CO.
 P.O. Box 10557 ED
 Jacksonville, Florida 32207

Wick Buildings can put the right Environment in your environment



Quality Engineering • Quality Materials • Quality Completion

- A wide range of agricultural buildings
- Solar buildings
- Horse barns
- Livestock confinement buildings
- Commercial and specialty buildings
- Exclusive Country Gentleman design



Wick Buildings®

A product of Wick Building Systems, Inc.
 ...offering the solar advantage!
 Mazomanie, WI 53560 • Adair, IA 50002

how do others see you?

this?  or this? 

Visitors see you the way they see your name on your mailbox.

CHRISTMAS GIFT IDEA!

THE JOHNSONS 2917
 Style M ~~\$16⁹⁵~~ \$17⁹⁵

JOHNSON R 1 BOX 17
 Style MF ~~\$12⁹⁵~~ \$8⁹⁵

R A JOHNSON 2917
 Style EM ~~\$14⁹⁵~~ \$10⁹⁵

MR & MRS R A JOHNSON
 Style NM ~~\$15⁹⁵~~ \$11⁹⁵

JACK, DEE ARMSTRONG
 RT 1, BOX 13
 Style EOM ~~\$21⁹⁵~~ \$17⁹⁵

FACTORY DISCOUNT PRICES

DAY-NIGHT MARKERS

- raised white reflective letters on black rust-proof aluminium
- your wording - same both sides; up to 17 characters on long plate, 6 on short
- shipped in one week or less
- specify style, wording and address
- send check or money order; add \$2.00 per marker for postage and handling
- dealer inquiries welcome

HURRY! ORDER NOW!

SPEED COMPANY
 SINCE 1949

Dept. 45113, P.O. Box 7025
 Colorado Springs, CO
 80933-7025

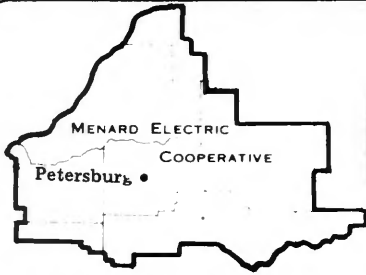
Satisfaction Guaranteed or Your Money Back!

For new building design and pricing information, call your nearest Wick Buildings dealer listed below or phone toll free 1-800-356-9682, weekdays

(In Wisconsin call 1-800-362-5457)

- ILLINOIS**
- Arthur Enos Helmuth & Sons • 217-453-2298
 - Ashton Consol Builders & Supply
815-453-2442
 - Bloomington Siron Sales & Service, Inc.
309-663-0331
 - Carlinville Donald Bacon • 217-627-2297
 - Carrollton Jim Parkinson • 618-576-2287
 - Cissna Park Siron Sales & Service, Inc.
815-457-2134
 - Danville Carl Wise • 217-776-2462
 - Effingham Curtis-Jansen • 217-342-2159
 - Eureka Dan Wiegand, Jr. • 309-467-4527
 - Hardin Bill Parkinson • 618-576-2287
 - Highland Curtis-Jansen • 618-654-9807
 - Lena Freeport Builders • 815-563-4211
 - Lindenhurst Don Jackson • 312-356-10004
 - Lyndon Dale Woodworth • 815-778-4469
 - Marion Glenn Hudgens • 618-993-5560
- Mason City** W.A. Grandy Co./
Ken & Jerry Harnacke • 217-445-2481
- Mazon** J.R. Enterprises • 815-448-2406
- Metropolis** Koch Brothers Builders
618-524-4565
- Monmouth** Phil Britt • 309-734-6458
- Paris** Wilson Contracting • 217-275-3411
- Princeville** Paul Steitmatter • 309-385-4848
- Quincy** Thompson Builders • 217-223-4060
- Royalton** Robert Smith • 618-984-4470
- Spring Valley** Malooley Brothers
815-664-2353
- Taylorville** Melvin Krutsinger • 217-543-3609
- Wataga** Harold Bramlett • 309-375-6470
- Waterman** Little Enterprises • 815-264-3302
- West Salem** George's Farm Supply
618-456-8461
- WISCONSIN**
- Genoa City** Chuck Schuren
414-279-5424 or 312-426-5040

Selected dealer territories available. Contact: Wick Buildings, Mazomanie, WI 53560



Menard Electric News

MENARD ELECTRIC COOPERATIVE 217-632-7746 PETERSBURG, ILLINOIS 62675

Co-op Comments

Lawrence Kyes of Kilbourne completed 20 years of service with your Cooperative on October 28. Larry is the area serviceman in the Kilbourne-Easton-Bath-Havana area.

Mr. and Mrs. Dorland W. Smith of Havana will celebrate their 25th anniversary on November 16. Dorland is the staff assistant for your Cooperative.

The meter reading contractors will be reading all Cooperative meters on November 18, 19, and 21. The cooperation of all members with guard dogs and/or locked gates is requested so that our contractors can accomplish their job in the least amount of time.

If you are in the market for a Maytag wringer washer, now is the time to buy. After 76 years, the Maytag Corporation is ending production of wringer washers.

Over 500 meters in the Cantrall area, account numbers beginning with 49, will be tested. Ron Ingram, an employee of your Cooperative, will be the meter tester.

If you have a fossil fuel heating system, it is time to have it serviced. Even a relatively new fossil fuel burner can lose efficiency in just one heating season. Generally, annual servicing can pay for itself in only one or two months of operation.

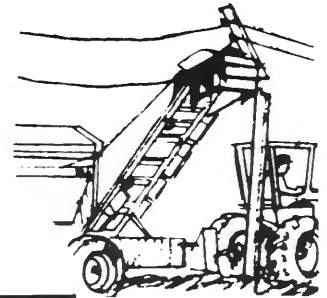
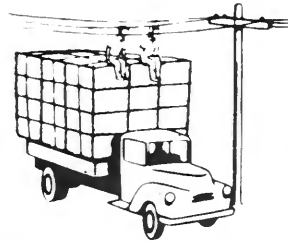
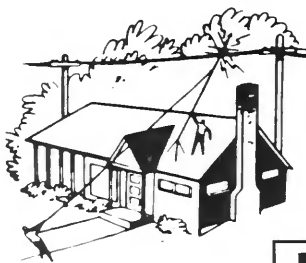
One of life's puzzles is how one gets

"over the hill" without ever being on top.

Your electric energy bills should reach your home on or about the first day of each month. Payment of the energy bill is considered delinquent if the payment has not reached the Cooperative office by the 21st day of the month. By paying the energy bill prior to the due date, you can help hold the ever increasing cost of electricity to a low or lower level.

Holiday closings

November 24 and 25,
Thanksgiving holidays
December 23 and 26,
Christmas holidays



Be alert for power line danger

WE GIVE THANKS



Thanksgiving is a time set aside each year for everyone to pause and think of the blessings they have received during the year. As employees of your cooperative, we have many things to be thankful for.

First and most important are our good members. Members who know and appreciate their cooperative, help us by providing the right-of-way for

our lines, by paying their bills promptly, and by notifying us about service interruptions.

We appreciate our members' good nature and helpful attitude when conditions beyond our control cause an interruption in electrical service.

We wish to thank our members for their cooperation and assistance during the past year, and hope that each and every one has a blessed and happy Thanksgiving.

'Meter tampering' is now legally defined as offense

Governor James R. Thompson has signed into law H.B. 690, amending the Illinois Criminal Code to specify that "meter tampering" shall be an offense under Illinois statutes.

Under the provisions of the Act, "a person commits the offense of unlawful interference with public utility services when he knowingly, without the consent of the owner of the services, impairs or interrupts any public water, gas or power supply, or other public services, or diverts, or causes to be diverted in whole or in part, any public water, gas, or power supply, or installs or removes any device for the purpose of such diversion."

The terms "public water, gas or power supply, or other public services" means any service subject to regulation by the Illinois Commerce Commission . . . and any service furnished by an electric cooperative as defined in Section 3.4 of the Electric Supplier Act.

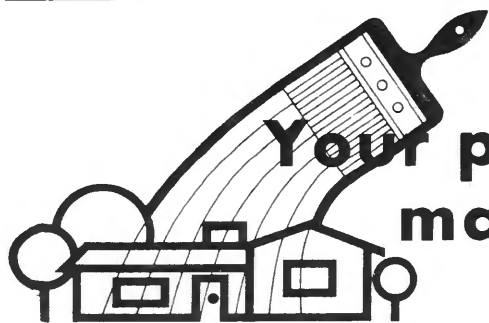
The legislation was sponsored by Representative Thomas Homer of Canton.



Utility system comparisons

NRECA Economist Don Smith recently updated a comparative analysis of the utility industry's three sectors. The following excerpt provides a graphic representation of some interesting differences that exist among cooperatives, municipals and investor-owned utilities:

	Co-op	Municipals	IOU
Consumers Per Mile	4.7	77.5	35.5
Revenue Per Mile	\$3,370.00	\$68,128.00	\$42,007.00
Investment Per Consumer (Distribution)	\$1,307.00	\$ 648.00	\$ 825.00
Federal Assistance Per Consumer	\$ 8.91	\$ 40.45	\$ 50.70



Your paint colors make energy difference

Planning to redecorate?

The National Paint and Coatings Association advises you to plan carefully as the colors you select can either save or cost you precious energy! Certain colors can conserve energy in your home by absorbing heat, reflecting light and providing psychological warmth.

Since dark colors absorb solar heat and reflect little light, homeowners in cold climates are wise to paint the exterior of their house a dark color — perhaps a deep green or brown — to help draw in more heat.

White and pale colors can be energy savers when used on interior walls and ceilings, since they can reflect light and cut down on the amount of electric lighting needed.

The difference in amount of light reflectancy between colors can be great. For instance, white is 80 percent reflectant while dark green reflects only 9 percent of the light in a room. Glossier paint finishes are more reflectant than flat finishes.

Certain colors can also enable you to psychologically warm up your home. Reds, oranges and yellows will

"warm" up a room while greens, blues and violets will make it seem cooler.

For example, in a dark room, or one with a northern exposure, walls painted lemon yellow will reflect light and give the room a warm, sunny feeling.

If you're fond of the cooler hues, use them in a room with a southern exposure where direct sunlight will add warmth.

Decorative accessories can add a cozy feeling to a room, too. Splash bright reds and oranges across the room in pillows, pictures and other accents.

Richly textured materials generally lend a warmer atmosphere than slick ones, so use the former liberally in fabrics and accessories.

Finishing touches, such as a nubby cactus plant in a rough clay pot or a vibrant macrame wall hanging will help create a warm oasis despite the falling temperature outside.

40 BRAND NEW TOWELS \$1.75!

UNWOVEN COTTON OR RAYON — Assorted beautiful Pastel Colors. BRAND NEW — NOT Seconds — 40 Towels for \$1.75 or 80 for only \$3.35. 120 just \$4.95. Super Quality. Pls. include 50¢ extra for pstg. and hdng. with EACH set of 40 Towels you buy. We know Towels — we've sold 70,000,000 already. Fund Raisers write for quantity prices. Money-Back Guarantee. No C.O.O.'s. Pls. allow up to 6 wks. for delivery.

40 YARDS LACE \$1.75

LACE — LACE — LACE . . . 40 yards of Lace in delightful patterns. Edgings, insertions, etc. Assorted beautiful designs, colors and widths. Pieces at least 10 yards in length—none smaller. Marvelous for dresses, pillow cases, etc. Terrific as hem facing. Only \$1.75 or double orders \$3.35. 3 orders just \$4.95. Pls. include 50¢ pstg. and hdng. with EACH set of 40 yards you buy. Satisfaction guaranteed! FREE with lace 50 BUTTONS!

50 New, High Quality Buttons. Assorted colors, sizes and shapes. Sent FREE with each lace order. Please allow up to 6 weeks for delivery.

AUTOMATIC NEEDLE THREADERS!



SPECIAL! 3 for \$1.45

Save time, and frustration and eye strain. Threads ANY style or size needle INSTANTLY — AUTOMATICALLY. Just drop needle into funnel, push button — and PRESTO — it's threaded. Make great gifts. SPECIAL. 3 threads only \$1.45 — 50¢ pstg. and hdng.

RUSH ORDER FOR ABOVE ITEMS TO:

TWO BROTHERS, INC. Dept. TLT-107
1602 Locust St. St. Louis, Mo. 63103

To order a copy, use coupon on page 10.

HOME WEATHERIZATION

For lower-cost living comfort

DID YOU KNOW?

That old stock tank, water reservoirs, etc., coated with Virden Tank Coat, are better than new ones! Fix it and forget it! Let us send you complete information. This is our 33rd year. VIRDEN PERMA-BILT CO., 2821 Mays St., P. O. Box 71601N, Phone: 806/352-2761, Amarillo, TX 79109



Regency Gowns

\$19.⁹⁵ up

EXPERT TAILORING

Finest Fabrics, including Permanent Press and Wash and Wear. Superior Quality. Guaranteed Satisfaction. Free Color Catalog and Fabric Swatches on Request.

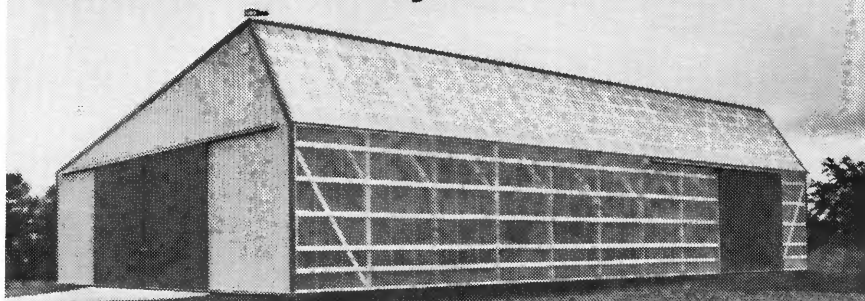
REGENCY

CAP & GOWN CO.

P.O. Box 10557 ED

Jacksonville, Florida 32207

Wick Buildings can put the right INvironment in your environment



Quality Engineering • Quality Materials • Quality Completion

- A wide range of agricultural buildings
- Solar buildings
- Horse barns
- Livestock confinement buildings
- Commercial and specialty buildings
- Exclusive Country Gentleman design



Wick Buildings®

A product of Wick Building Systems, Inc.
...offering the solar advantage!

Mazomanie, WI 53560 • Adair, IA 50002

For new building design and pricing information, call your nearest Wick Buildings dealer listed below or phone toll free 1-800-356-9682, weekdays

(In Wisconsin call 1-800-362-5457)

ILLINOIS

Arthur Enos Helmuth & Sons • 217-543-2298
Ashton Consol Builders & Supply
815-453-2442
Bloomington Siron Sales & Service, Inc.
309-663-0331
Carlinville Donald Bacon • 217-627-2297
Carrollton Jim Parkinson • 618-576-2287
Cissna Park Siron Sales & Service, Inc.
815-457-2134
Danville Carl Wise • 217-776-2462
Effingham Curtis-Jansen • 217-342-2159
Eureka Dan Wiegand, Jr. • 309-467-4527
Hardin Bill Parkinson • 618-576-2287
Highland Curtis-Jansen • 618-654-9807
Lena Freepport Builders • 815-563-4211
Lindenhurst Don Jackson • 312-356-10004
Lyndon Dale Woodworth • 815-778-4469
Marion Glenn Hudgens • 618-993-5560
Mason City W.A. Grandy Co./
Ken & Jerry Harnacke • 217-445-2481

Mazon J.R. Enterprises • 815-448-2406
Metropolis Koch Brothers Builders
618-524-4565
Monmouth Phil Britt • 309-734-6458
Paris Wilson Contracting • 217-275-3411
Princeville Paul Steitmatter • 309-385-4848
Quincy Thompson Builders • 217-223-4060
Royalton Robert Smith • 815-984-4470
Spring Valley Malooley Brothers
815-664-2353
Taylorville Melvin Krutsinger • 217-543-3609
Wataga Harold Bramlett • 309-375-6470
Waterman Little Enterprises • 815-264-3302
West Salem George's Farm Supply
618-456-8461

WISCONSIN

Genoa City Chuck Schuren
414-279-5424 or 312-426-5040



JUST ONE HAND!

A completely NEW concept in gardening machines! The amazing 2-in-1 TROY-BILT® Roto Tiller is not only a wonderfully better roto tiller, it's also a wonderful compost shredder-chopper! It turns your whole garden, however large or small, into a fabulously fertile "compost pile"! So easy to handle, even for ladies and older folks. You guide it with JUST ONE HAND! For complete details, prices, "OFF-SEASON" SAVINGS, send coupon below for free booklet. TROY-BILT® Roto Tiller-Power Composters, 102nd St. & 9th Ave., Troy, New York 12180

©1982 Garden Way

TROY-BILT® Roto Tiller-PowerComposters

Dept. A-1941
102nd St. & 9th Ave., Troy, N.Y. 12180

Please send the whole wonderful story of TROY-BILT® Roto Tillers including prices and "OFF-SEASON" SAVINGS now in effect for a limited time.

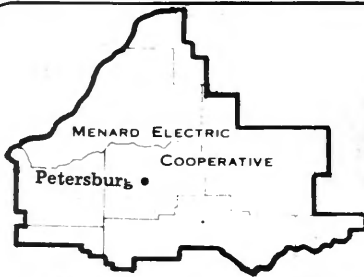
(Please Print Clearly)

Name _____

Address _____

City _____ State _____ Zip _____

Selected dealer territories available. Contact: Wick Buildings, Mazomanie, WI 53560



Menard Electric News

MENARD ELECTRIC COOPERATIVE 217-632-7746 PETERSBURG, ILLINOIS 62675

Co-op Comments

The meter reading contractors will be reading all Cooperative meters including all accounts on Seasonal Rates on December 19, 20, and 21. If you have locked gates or guard dogs, please make your electric meter available to the contractors, so they can accomplish their mission in the shortest time possible.

A representative of Electric Laboratory and Sales, Inc., Mattoon, Illinois, is testing approximately 500 electric meters in the Sherman and Williamsville areas during the month of December. In addition, an employee of your Cooperative is continuing meter testing in the Cantrall and Andrew areas.

Alvin Davis of Beardstown completed 15 years of service as a director of your Cooperative on December 1.

Bennett & Middendorf, Ltd., of Quincy, Illinois, has begun the annual audit for your Cooperative. Approximately 10 percent of the Cooperative accounts will receive a form letter from the auditing firm in an attempt to confirm the Accounts Receivable sometime during January of 1984. Your cooperation in responding to their request will be appreciated.



As the story is told, there once was a colorful, red and green Christmas ornament that wanted very much to hang on a large Christmas tree. Not just any large tree mind you, but one in a large and wealthy home where it could be surrounded with other beautiful bulbs and lights.

As Christmas Day was fast approaching, this particular ornament would perch itself on the store shelf, so it could see everyone shopping in the aisle. By observing the way each customer was dressed, the ornament would speculate on the customer's wealth. If the customer was poorly dressed, the little ornament would roll backward and hide behind the tinsel. Now this game of hide and seek seemed to be appropriate strategy at first, but as the hours grew into days

and the days into weeks, the ornament began to worry. Finally, it was the day before Christmas and the store was closing early. Clang, clang, clang — the 10 minutes before closing bell echoed through the almost-empty store. Silently and hopelessly, the little ornament began to cry.

The lights were being turned down as a raggedly dressed man shuffled deliberately down the aisle and began examining the remaining ornaments very deliberately. Out of habit, the little ornament retreated behind the tinsel. Yet the terrible thought of missing Christmas altogether caused the little ornament to roll back to its original vantage point. After what seemed to be an eternity, the poor man finally selected an ornament — red and green. Tenderly, he carried his choice to the counter.

On Christmas morning, the little ornament was hung outside on a small spruce tree near some railroad tracks. Looking around, the ornament could see that its dreams of being surrounded by other beautiful bulbs and bright lights were not to be. There were no other decorations in sight. Cold and disappointed, the little ornament began to cry when a loud chorus of Joy To The World diverted its attention to four hobos. They were gazing upon the red and green ornament and singing joyfully. Incredibly, as the hobos sang, the little ornament began to shine as it had never shone before. Because for the very first time, it realized that the true joy of Christmas was not in receiving, but in the giving of happiness.

Half of U.S. homes 'dial down'

Nearly 50 percent of the nation's households are turning down their thermostats during the heating season to reduce utility bills, the Energy Department said in a report.

The study found that at night, 26 percent of U.S. households lower thermostats by four to five degrees Fahrenheit, while 21 percent of households reduced nighttime heat by six

degrees or more.

The report is based on 1981 survey figures.

"It is clear . . . that a number of homes are dialing down their thermostats at night," the study said. "Dialing down occurs at night in almost 50 percent of the homes that have heating controls and that have their heat turned on in the daytime."

Holiday closing

DECEMBER 23 AND 26, 1983,
CHRISTMAS HOLIDAYS, AND
JANUARY 2, 1984, NEW YEAR'S
HOLIDAY

Wishing you
everything bright
and beautiful
during the
holiday
season
and
always . . .



The holiday season assures us in many wonderful ways that life is good . . . the heartwarming exchange of expressions of goodwill . . . affectionate renewals of ties with family and friends . . . acts of kindness and charity done with warmth and enthusiasm. . . . All evoke a faith in mankind that helps us renew hope for a better future.

That same spirit of faith and hope was present more than 40 years ago when rural Illinois residents united in a spirit of cooperation to bring electricity to a darkened countryside. Their faith in each other and their hope for the future helped them organize electric cooperatives to improve the quality of life for their families and for future generations.

Today, the Directors and employees of Menard Electric are continuing the job those pioneers started . . . working in the cooperative spirit to continue improving the lives of our member-owners and to secure their energy future. We're committed to keeping your holidays bright and beautiful . . . always.

With Season Greetings
from the Directors and Employees of
Menard Electric Cooperative.

Home energy help is available to eligible families through state-administered program

Illinois Home Energy Assistance Program (IHEAP) local administering agencies are now accepting applications for households of income-eligible families who believe they are eligible for assistance.

The Department of Commerce and Community Affairs is the state administering agency of IHEAP.

Illinois received from the U.S. Dept. of Health and Human Services a commitment of \$114 million for this program in fiscal year 1984. IHEAP provides grants to income-eligible renters and homeowners to pay heating and medically necessary cooling costs and to reconnect services lost. In 1982, 457,515 Illinois households received aid. Eligibility is based on the number of family members and their combined annual income.

"This program is not intended to pay all energy costs of the needy, but rather to reduce those costs by providing either a one-time grant to them or paying the utility vendor directly," Michael T. Woelffer, DCCA director, said.

Families who think they may be eligible for IHEAP assistance should

contact their local administering agency or call DCCA's toll-free energy hotline at 800-252-8643.

The following is a listing of agencies and telephone numbers in counties with electric service by electric cooperatives:

Bond, Clinton, Marion and Washington counties: BCMW Community Services, Inc., Centralia 618/532-7388

Knox County: Carver Community Action Agency, Galesburg 309/342-0158

Christian, Clay, Effingham, Fayette, Montgomery, Moultrie and Shelby counties: CEFS Economic Opportunity Corp., Effingham 217/347-5018

De Witt, Logan, Menard, Mason and Opportunity, Inc., Greenup 217/nomic Development Corporation, Lincoln 217/732-2159

Macon County: Decatur/Macon County Opportunities Corporation, Decatur 217/428-2193

Clark, Coles, Crawford, Cumberland, Douglas, Edgar, Jasper, Lawrence and Richland counties: Embarras River Basin Agency for Economic Opportunity, Inc., Greenup, 217/923-5115

Fulton County: Fulton County Health Department, Canton 309/647-1173

Calhoun, Greene, Jersey and Macoupin counties: Illinois Valley Economic Development Corporation, Carlinville 217/854-9677

Madison County: residents should contact DCCA toll-free at 800-252-8643.

Livingston and McLean counties: Mid Central Economic Opportunity Corporation, Bloomington 309/829-0691

Morgan and Scott counties: MSC Community Services, Jacksonville 217/243-4711

Jo Daviess and Stephenson counties: Northwestern Illinois Community Action Agency, Freeport 815/232-3141

Peoria County: Peoria Citizens Committee for Economic Opportunity, Peoria 309/671-3900

Henry, Mercer and Rock Island counties: Project NOW Community Action Agency, Rock Island 309/793-6350

St. Clair County: St. Clair County Community Action Agency, East St. Louis, 618/874-0371

Sangamon and Cass counties: Sangamon County Community Devl., Springfield 217/789-6688

Alexander, Hardin, Johnson, Massac, Pope, Pulaski and Union counties: Shawnee Development Council, Inc., Karnak 618/634-2201

Bureau, Carroll, LaSalle, Lee, Marshall, Ogle, Putnam, Stark and Whiteside counties: Tri-County Opportunities Council, Rock Falls 815/625-7830

Tazewell and Woodford counties: Tri-County Regional Planning Commission, East Peoria 309/694-4391

Adams, Brown, Pike and Schuyler counties: Two Rivers Regional Council of Public Officials, Quincy 217/224-8171

Champaign County: Urban League of Champaign County, Champaign 217/356-1364

Ford, Iroquois and Vermilion counties: Vermilion County Citizens Action Committee for Economic Opportunity, Inc., Danville 217/443-2705

Franklin, Jefferson and Williamson counties: Volunteer Services, Marion 618/997-4371 Ext. 239 or 270

Edwards, Gallatin, Hamilton, Saline, Wabash, Wayne and White counties: Wabash Area Development, Inc., Mill Shoals 618/896-5375

Jackson, Monroe, Perry and Randolph counties: Western Egyptian Economic Opportunity Council, Steeleville 618/965-3458

Hancock, Henderson, McDonough and Warren counties: Western Illinois Regional Council, Macomb 309/837-3941

