

New Offices Occupied by State Group

Nearly 300 persons visited new headquarters of the Association of Illinois Electric Cooperatives six miles south of Springfield during a recent open house.

The one-story limestone building contains 4,556 square feet of office and meeting room space on the first floor plus an equal amount in the basement. The later houses chiefly the printing and mailing departments which include the most modern of offset printing facilities and darkroom.

LYLE E. DUNHAM, director, the state associations member service department, described the new headquarters in this way in an article published by Contractors' Electrical Equipment magazine:

"The installation is not spectacular. It is not designed to dazzle. Instead it is intended to be intensely practical, economical and efficient, reliable and satisfactory over a long period of years."

The structure includes the latest ideas in electric heating installed by E. P. Allison Company of Chicago and manufactured by Radiant Electric Heat Company of Centerville, Iowa. Mr. Dunham worked with Radiant Electric in designing the system.

"We regard this installation as highly practical for office buildings of all kinds, plus hotels, motels, senior citizens' homes and similar structures," a company spokesman said.

"This will stand the test of time and the wisdom of the electric heating plan will become increasingly apparent as the trouble-free years pass."

RAYMOND W. RUSTEBERG, Valmeyer, president of the state organization, said of the new building:

"We believe it will prove of considerable interest to builders and others concerned with planning and construction of similar structures.

Our estimates indicate heating costs will be less than \$600 annually."

Mr. Rusteburg said cost of the building and three-acre site was around \$140,000.

Members of the building commit-

tee are Walter Johnston, chairman; Owen Chaney, Paul Deisher, L. C. Groat, Loyd Pickard and W. L. Walker.

Ralph N. Morrisett, Springfield, was the architect.

A MODERN NEW RAPIDAYTON WATER SYSTEM MAKES THE DIFFERENCE



©1965 TAIT MFG. CO.

EXPANDING FARM OPERATIONS REQUIRE MORE PUMP POWER

Farms are getting larger—requiring more water. More water for increased livestock production, irrigation, waste removal, spraying, and the utilization of ponds. Modern "big power" farming must have **FULL PUMP POWER** and dependable 24-hour-a-day service. Get it with a Rapidayton water system—engineered to meet the exact needs of your own farming operation. Mail coupon today for valuable, helpful information.

Rapidayton



Rapidayton division, The Tait Manufacturing Co., Dayton, Ohio 45401
Send full details and give name of nearest Rapidayton pump dealer.

NAME _____

RFD OR STREET _____

COUNTY _____

STATE _____



Wayne-White News

Phone: 842-2196

Wayne-White Counties Electric Cooperative

Fairfield, Ill.

Wayne-White to Pay More Capital Credits This Year

Additional capital credit payments to member-owners of Wayne-White Counties Electric Cooperative are expected to be made this year, President Evans Williams reported at the cooperative's 27th annual meeting in Fairfield recently.

This will be the third consecutive year Wayne-White has returned operating margins to its member-owners. This year's refund will be to members receiving electric service during 1948 and 1949, Mr. Williams said.

"This, we feel, should settle all doubts in the minds of people as to whether or not this is a non-profit organization," he said.

THE PRESIDENT also declared that "It would be a sorry time when our annual member meetings will be no more. You will have lost your independence of the service you probably need most on the farm. While it is not the greatest expense you have, it is one of the most vital.

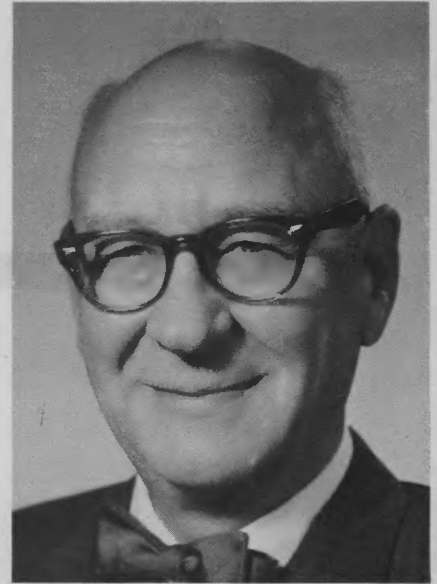
"Only through cooperative effort have we been able to get our lines built and only through a cooperative effort will we be able to meet the demands for more and more service in the future."

OWEN J. CHANEY, manager, in his 19th annual report told how the cooperative is maintaining its equipment in first class condition so that service to members will continue with a minimum of interruption. He said such things as poles, wire, transformers, substations, meters and capital credits "are all valuable assets that make a cooperative tick."

He continued: "But the most valuable asset is an informed, understanding member — you members who not only own and use the cooperative, but who also finance it.

"**YOU ELECT** the board of directors who in turn hires management and sets the policies by which management is guided. By this action you determine the growth, usefulness and soundness of this cooperative. In your hands rests the power to make or break your organization. Non-support by members can make the finest business fall far short of its potential.

"With all other conditions the same, an increase in volume will be reflected in lower operating costs," Mr. Chaney continued. "As prices are lowered, savings to members increase. This is the personal power



Owen J. Chaney gave his 19th annual manager's report at the cooperative's 27th annual meeting.

that you, the cooperative members, have. It is both natural and good sense for the owners of a business to support it, to put their personal power to work."

During the meeting, the member-owners re-elected nine directors to one-year terms. The nine are Mr. Williams, McLeansboro r.r. 3; G. O. Deem, Geff; Willard Bannon, Grayville; D. M. Detroy, Enfield; Kenneth Gray, Wayne City; Stanley Greathouse, Johnsonville; Harold Shepherd, Albion; L. P. Dolan,



Manager Owen J. Chaney (center) congratulates those who received service awards during the annual meeting. They are (from left) employes Jesse Baker, Mrs. Evelyn Edwards, Norman Davis, Charles Mann, Mr. Chaney, directors L. P. Dolan, Harold Shepherd, Bernard Kisner and Evans Williams.

McLeansboro; and Bernard Kisner, Carmi r.r. 4.

Following the meeting, the board reorganized and re-elected its officers. They are Mr. Williams, president; Mr. Deem, vice president; Mr. Bannon, secretary, and Mr. Detroy, treasurer.

Four of the directors received awards for their service to the cooperative. Those honored are Mr. Shepherd, 25 years; Mr. Dolan, 20 years; Mr. Williams, 20 years, and Mr. Kisner, five years.

SERVICE AWARDS also were presented to five cooperative employees. They are Norman Davis, Carmi, 25 years; Charles Mann, Fairfield, 25 years; George Bradley, Cisne, 20 years; Jesse Baker, Fairfield, 15 years, and Mrs. Evelyn Edwards, Fairfield, 15 years.

During the entertainment portion of the meeting, Miss Margaret Ann Pollard, 16, daughter of Mr. and Mrs. Lewis E. Pollard, Burnt Prairie, was crowned "Miss Wayne-White Counties Electric Cooperative of 1965" by last year's queen, Miss Flossie Hall, McLeansboro.

The first runner-up was Miss Anita Harris, 17, daughter of Mr. and Mrs. Carl G. Harris, Fairfield. The new queen's older sister, Marian, 17, placed third in the field of 17 contestants.



Three of Wayne-White's directors are school teachers. They are (from left) President Evans Williams, Stanley Greathouse and Kenneth Gray.



The cooperative's new queen, Margaret Ann Pollard (right), smiles her appreciation. With her are her sister, Marian (left), the second runner-up, and Anita Harris, the first runner-up.



There were 17 girls who competed in this year's beauty pageant. Contestants are (from left) Anita Harris, Linda Tullis, Claudia Simpson, Linda Withrow, Glenda Shaw, Marian Pollard, Margaret Ann Pollard, Carolyn Sue Belangee, Marilyn Simpson, Linda Seifert, Susan Hedrick, Karen Kay Johnson, Roberta Luthe, Billie Irene Bailey, Patricia Burt, Suzanne Elliott and Linda Roosevelt.

Outstanding Values on Hotpoint appliances!

New Hotpoint washer handles 2 to 16 lb. loads!

New Hotpoint dryer has 5-year parts replacement warranty!

Just out—no other like it. Washes tiny 2-lb. loads without special attachments ...up to 16-lb. loads without straining (it has a big ½ h.p. motor and commercial size transmission). No-rust porcelain finish, outside and in, at no extra cost. Dial the cycle to fit the load. Buy now and save. **\$189***

low priced at about



Model LW650

Model LB670

Proof of quality—Hotpoint gives you a written 5-year warranty on the motor and other critical hard-working dryer parts. Here's more: The dryer shuts off—automatically—when clothes are dried just right. De-wrinkling cycle cools clothes...prevents wrinkle-setting. Safety start protects the kids.

*Blower, blower clamp, thermostat, drum motor, centrifugal switch, dryer drum electrical heat coil.

low priced at about **\$149**

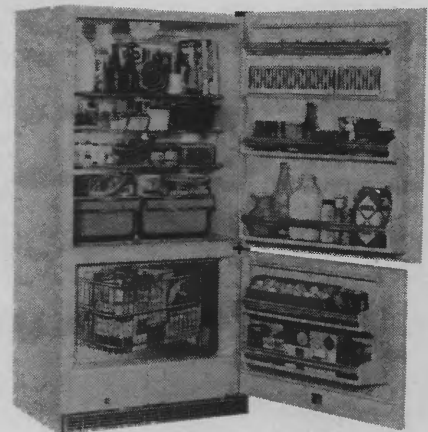
Hotpoint range with removable Teflon-coated oven walls

New low price for this range with Hotpoint's patented no-scour oven—far less than for most hard-to-clean ranges! Just slide out the oven walls, wipe them clean at the range or wash them at the sink like dishes. Other deluxe features include automatic oven timer and glass oven door. 40" model RC440 also sale-priced.

low priced at about **\$219***



Model RB340



Model CBF515

Hotpoint No-Frost refrigerator-freezer rolls on wheels

Deluxe 14.8 cu. ft., 2-door model has adjustable sliding shelf, 2 porcelain enamel slide-out crispers, separate cheese keeper... swing-basket in big freezer below. And no defrosting, ever. Loads of storage, lots of other extras. Just roll it out for easy cleaning, sweeping, waxing. Buy now and save. **\$329**

low priced at about

HOTPOINT 90-DAY REPLACEMENT GUARANTEE OF SATISFACTION
If you are not completely satisfied with your new Hotpoint appliance, and notify your dealer within 90 days from date of purchase, it will be replaced with a comparable Hotpoint model at no cost to you.
*See your participating Hotpoint dealer for his prices and trade-in allowances. Subject to Fair Trade where applicable. Prices higher in Hawaii.

Hotpoint

first with the features women want most
A Division of General Electric Company • Chicago, Illinois 606