

# New Insulation Material Undergoes Heat Cost Test

A revolutionary insulating material is being tested by rural electric cooperatives in an experimental program which may prove that electric heating is even more economical than now believed.

The material, Urethane foam, has been sprayed onto the walls and ceilings of a house to test its insulating capacity, believed to be twice as effective as conventional insulation.

An identical house equipped with conventional insulation will be compared with the Urethane foam house to determine the difference in electric heating costs.

**THE PROJECT** is being coordinated by Corn Belt Electric Cooperative, Inc., at Bloomington with several other electric cooperatives participating. The test houses are in Covell, near Bloomington.

Joe M. Crosno, power use adviser for Corn Belt Electric and director of the project, believes the new insulating material will make heating homes electrically even more attractive.

Urethane foam is considerably more expensive than standard in-

sulation, but the anticipated savings in heating bills would more than make up the difference within a few years, according to Mr. Crosno.

**HEATING COST** comparisons will be made of the test houses to determine how quickly the higher installation cost will be realized in lower heating bills.

There is another characteristic of Urethane foam which may result in even more economy. Mr. Crosno reports that the insulating foam becomes quite firm after it dries. By helping support the frame of a building, the hard foam may eliminate the need of some studs and bracing material and thereby reduce building costs.

This possible savings also will be explored in the project which must encompass a complete heating system before tentative cost estimates can be made.

Electric cooperatives participating with Corn Belt are Coles-Moultrie Electric Cooperative at Mattoon, Eastern Illinois Power Cooperative at Paxton, Illini Electric Cooperative at Champaign, M. J. M. Electric

The new Urethane foam (as shown here) is being sprayed between the rafters of a house which will be compared with a house equipped with conventional insulation to determine the difference in electric heating costs.



Cooperative, Inc., at Carlinville, Menard Electric Cooperative at Petersburg, Tri-County Electric Cooperative, Inc., at Mt. Vernon, Wayne-White Counties Electric Cooperative at Fairfield and Western Illinois Electrical Coop. at Carthage.

## New Early Tomato

An extremely early tomato, often ripening big red tomatoes by July 4th, has been developed at the Jung Farms in Wisconsin. You can obtain a trial packet of this tomato by sending 10c to the Jung Seed Co., Box 30, Randolph, Wis. They will not only send you this tomato seed but also a packet of the glorious Giant Hybrid Zinnias and a copy of their 58th catalog, America's most colorful 1965 seed catalog. (Adv.)

## INCREASE YOUR MILK PROFITS

Clipped cows mean more money—less sediment—lower bacteria count—higher quality milk—cows stay cleaner



### FREE CHART

"Where to Clip for Higher Quality Milk" (Write to Sunbeam Corp.)



Cat No. 83AU  
Top Blade  
Cat. No. 84AU  
Bottom Blade

## ANNOUNCING

Major developments in sheep shearing equipment



- New 2½" Wide Head
- 300% More Power
- 50% More Speed
- Cool Running
- 3 wide shearing heads available for new Sunbeam motor

© SUNBEAM, STEWART, CLIPMASTER, SHEARMASTER

**FREE COMPLETE CATALOG — WRITE:**  
**SUNBEAM CORPORATION**  
5400 W. Roosevelt Road  
Chicago 50, Ill., Dept. CB-REA

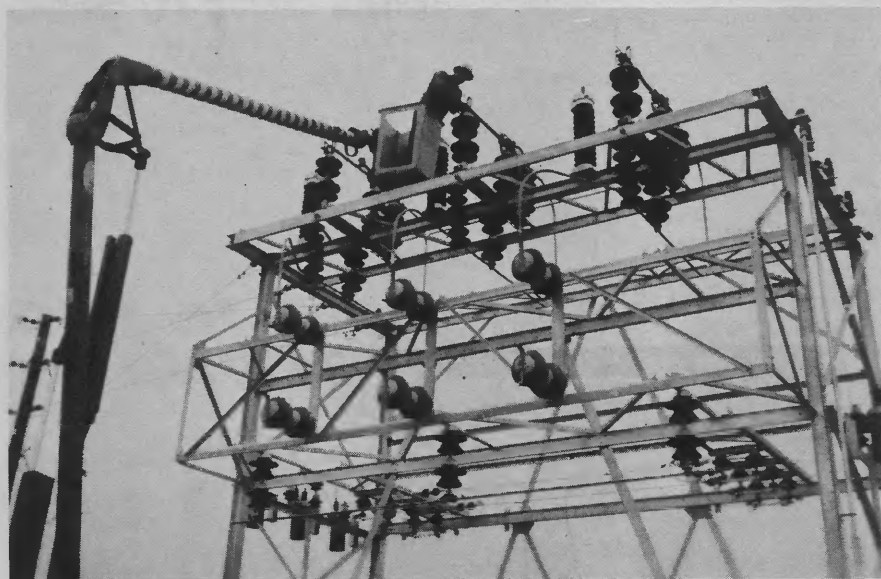


# Shelby Electric News

Shelby Electric Cooperative

Phone 1540

Shelbyville, Ill.

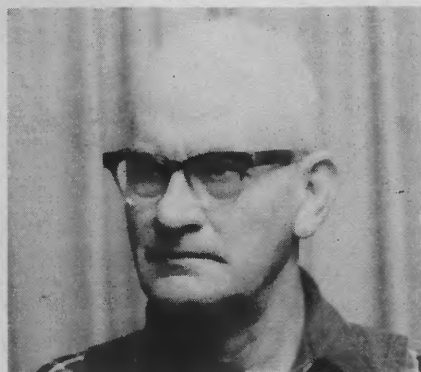


Finishing touches on the new Richland substation are handled by Earl Westenhaver using the highlift bucket.

## Ninth Substation Put in Operation

For the past few months Earl Westenhaver and his helpers have been constructing a new substation two miles west of Windsor. Mr. Westenhaver is a 20-year employe of the cooperative and is a first-class lineman. Substation construction is another of his many skills.

We might say that another monument representing the cooperative efforts of all members is now complete.



Earl Westenhaver

With the ever increasing use of electricity on the farm and in the home, the new station and three-phase lines going from it will insure adequate electrical power for the present and future. Many members living west, north and south of Windsor will be receiving their electricity from the Richland Substation.

## Home Lighting

Each year homemakers spend millions of dollars on home furnishings of every sort except the one basic home furnishing—proper fixture lighting—without which the others cannot be seen at their best.

Improperly lighted, the most expensively and tastefully decorated room is a waste of money. Without good lighting, patterns, textures, design and color fade into gloom. What is the use of time and money spent for decoration if the results cannot be fully enjoyed?

## Need a Security Light

Why not consider a mercury vapor light? A light that will come on automatically at dusk and go off at dawn. A light that will help protect your farmstead while you are away.

Your Shelby Electric Cooperative has installed several hundred of these lights over the area. We install, furnish the electricity and maintain the light for a \$3.50 per month charge.

Call the office or ask any employe and we will be glad to help. Light up the area, make your family and property more secure.



Proper lighting can do wonders with the most meager decorating budget, as well as with the most lavish. Sunshine is what dispels your gloom in the summer time, so why not bring it into your homes via your electric lighting during the gloomy winter months. Light up and see what a difference it makes. You can't find a ghost in the sunshine!

## ELECTRIC HOME HEATING ADVANTAGES OUTLINED

If you're planning to build or remodel, heating experts claim your home will stay modern if you select electric heat. They state that there are no fumes, no smoke or soot, because there are no ducts, chimney or furnace! That means electric heat system installation costs are lower. And with an electric heating system there are no seasonal check-ups and clean-ups to get ready for the heating months. Service is reduced too for electric heat has no moving parts. There is less chance for break-downs in the middle of a cold snap.

A well-engineered electric heating system gives you individual room temperature control. Each unit includes temperature controls for dialing cooler bedrooms, warmer bathrooms and play areas. Clean and safe as an electric light, electric heat can save on rug, drape and furniture cleaning bills.

For full electric home heating system details, call your Shelby Electric Cooperative.

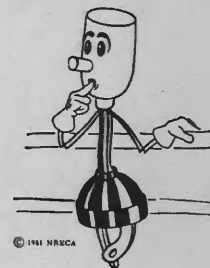
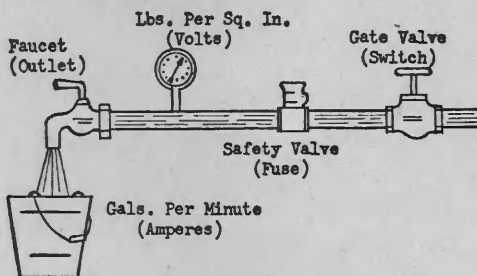
## LET'S GET ACQUAINTED

Here is a table to help you remember electrical terms and how they compare with a water system:



"White Wreathband"

COMPARISON	WATER	ELECTRICITY
Means of Travel	Pipe	Wire
Rate of Flow	Gallons Per Minute	Amperes
Pressure	Pounds Per Sq. In.	Volts
Safety Device	Pressure Relief Valve	Fuse
Cutoff	Gate Valve	Switch
Point of Use	Faucet	Outlet



© 1941 NRECA

## What to do When Power Fails

Your electric service rarely fails. Your electric cooperative has a very enviable record of continuity of service. However, outages can happen. For the benefit of newer members or perhaps maybe some others who have forgotten how to report a power failure, we are printing the proper procedure below.

If your power should fail, check lights and receptacles throughout the house and out buildings. If you have power at some places, then the trouble may be a fuse or circuit breaker.

You can repair this trouble yourself. If all the lights and appliances are out, check the breakers or fuses at the load center.

After checking these, check with your neighbor to determine if you are the only one out, or if the line may be out. After checking this, then call your outage reporter and tell him you are out of service, and whether or not your neighbors are out. Also, tell

him your account number (this is the number right above your name on the meter book) and any other information you may know about the outage.

For those members who do not know the name and number of the authorized outage reporter on their telephone exchange you will find them listed below:

### WHEN YOUR TELEPHONE EXCHANGE IS— CALL

- Shelbyville .....1540
- Cowden, Shelbyville .....1540
- Findlay, Shelbyville .....1540
- Herrick, Shelbyville .....1540
- Lakewood, Shelbyville .....1540
- Stewardson, Shelbyville .....1540
- Strasburg, Shelbyville .....1540
- Tower Hill, Shelbyville .....1540
- Windsor, Shelbyville .....1540
- Gays, Shelbyville .....1540
- Assumption,  
K. P. Branyan .....1291
- Assumption,  
Leo Banning .....1016
- Pana, Jack Hilliard .....562-2431

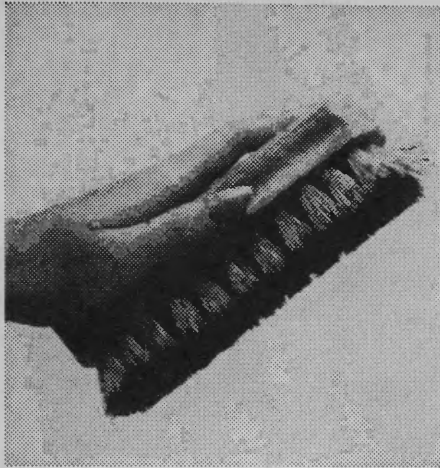
Stonington, Gale Beck .....2831  
Stonington,

- Ervil Milliman .....4173
- Mode, Shelbyville .....1540
- Trowbridge, Shelbyville ..1540
- Westervelt ....Telephone Office
- Bethany .....C. E. Coultas
- Blue Mound .....Wayne Rice
- Blue Mound ....Merle Damery
- Dalton City .....Carl Shelton
- Edinburg .....R. A. Hunsley
- Edinburg ..Charles Trumbower
- Macon .....Richard Cribbet
- Morrisonville .....Lee Ryan
- Moweaqua .....Floyd Dial
- Moweaqua .....Kenneth Otta
- Moweaqua

- .....Mrs. Gladys Wooters
- Mt. Auburn ....LeRoy Butcher
- Mt. Zion .....Harold Nein
- Nokomis .....Chester Pocock
- Nokomis .....Melvin DeWerff
- Oconee .....Richard Temmen
- Owaneco .....Wayland Bonnell
- Shumway, Shelbyville.....1540
- Taylorville .....Lee Ellis

If for any reason you cannot reach your reporter, call Shelbyville 1540.





**No scrub...**



**no spray...**



**no scraping away!**



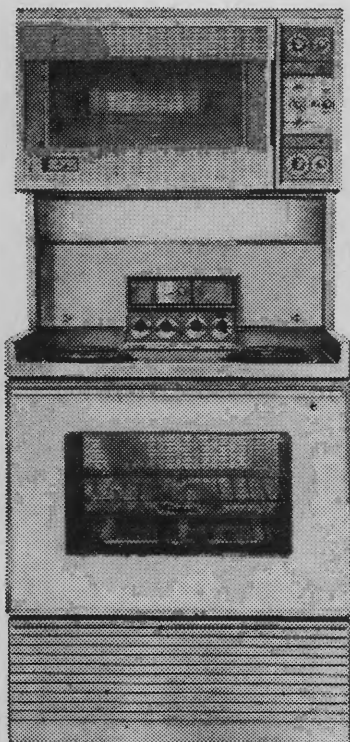
**Just throw out the foil  
and your Kelvinator oven  
is clean.**

**It's the only electric range built to use  
aluminum linings safely, quickly, easily.**

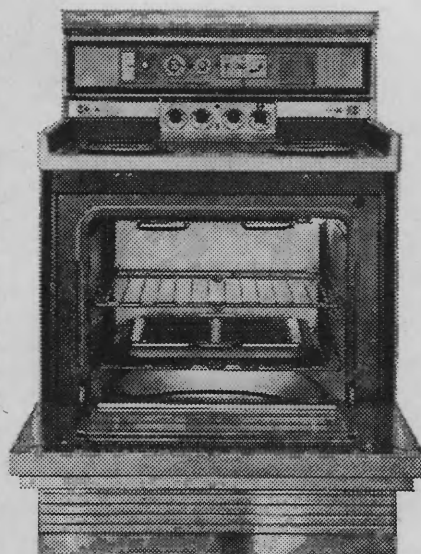
Special racks to hold aluminum foil linings come with every Kelvinator electric range, regardless of price. That means you simply throw away spatters and spill-overs, never have to go through the drudgery of oven cleaning again. What's more, only Kelvinator ovens are designed to give you perfect cooking results whenever you bake and broil with inexpensive aluminum foil linings.

See your nearest Kelvinator dealer.

Kelvinator, American Motors Corp., Detroit, Mich. Dedicated to Excellence in Rambler Automobiles and Kelvinator Appliances.



Two-oven Kelvinator Tri-Level range.



30" or 40" free-standing Kelvinator range.

# WIPCO Making Excellent Progress, Officers Report

Excellent progress is being made in the formative years of Western Illinois Power Cooperative, Inc., retiring Board President Walter H. Johnston said at the cooperative's fifth annual meeting in Jacksonville recently.

Mr. Johnston of Girard said "It has been a real struggle to hold operational costs down, but this has been done through prudent management. Construction costs are somewhat above previous estimates, mostly because of the general upturn in the nation's economy."

DONALD B. BRINGMAN, WIPCO manager, also reported on the progress of WIPCO's new generating plant on the Illinois River near Pearl. Plans call for completion of the plant and start of operations there in mid-1966.

Mr. Bringman said the construction costs are being held down as well as possible through a "concentrated effort."

The 22,000-kilowatt plant is being built to combine the power requirements of seven member electric distribution cooperatives and to achieve advantages of volume production and use of larger, more efficient generating units.

WIPCO is a power producing cooperative serving seven distribution cooperatives. The seven are Adams Electrical Co-operative, Camp Point; Illinois Rural Electric Co., Winchester; M. J. M. Electric Cooperative, Inc., Carlinville; Menard Electric Cooperative, Petersburg; Rural Electric Convenience Cooperative Co., Auburn; Spoon River Electric Co-operative, Inc., Canton; and Western Illinois Electrical Coop., Carthage.

DEAN SEARLS of Camp Point was elected president of the generating cooperative to succeed Mr. Johnston who served two one-year terms.

Mr. Searls, manager of Adams Electrical, said "WIPCO has been in operation for some 18 months now and is making splendid progress toward its goal of helping its member cooperatives provide their individual member-consumers with electricity at the lowest possible cost. In this manner it is benefitting all its membership and, indeed, all the residents of its territory, town and country alike."

HAROLD S. HUEY of Plymouth was elected secretary-treasurer, succeeding F. J. Longmeyer of Green-

field. Re-elected were Homer T. Brown, New Holland, vice president; and S. R. Faris, Winchester, assistant secretary-treasurer.

All directors, two from each of the seven distribution cooperatives, were re-elected for one-year terms except E. R. Hild of Illiopolis who was not a candidate. He was succeeded by Dale Lepper of Ashland.

Re-elected were Mr. Searls, Mr. Johnston, Mr. Brown, Mr. Huey, Mr. Longmeyer, Mr. Faris, Carl Bloome, Carlinville, r.r. 2; Leo Arnett, Lewistown, r.r. 2; L. C. Groat, Canton; Lee Leonard, Carthage; John Sargent, Rushville, r.r. 1; Ralph V. White, Auburn; and Charles W. Witt, Carlinville.



WIPCO officers and manager talk things over. From left are Homer T. Brown, vice president; Donald B. Bringman, manager; S. R. Faris, assistant secretary-treasurer; Harold S. Huey, secretary-treasurer and Dean Searls, president.

## INCREASE YOUR MILK PROFITS

Clipped cows mean more money—less sediment—lower bacteria count—higher quality milk—cows stay cleaner



Clip with the fastest, most powerful animal clipper made . . .

**Sunbeam STEWART CLIPMASTER**  
Animal Clipper  
Cat. No. 510

### FREE CHART

"Where to Clip for Higher Quality Milk" (Write to Sunbeam Corp.)



Cat No. 83AU  
Top Blade  
Cat. No. 84AU  
Bottom Blade

## ANNOUNCING

Major developments in sheep shearing equipment



**Sunbeam STEWART SHEARMASTER**  
Professional/Home Sheep Shearing Machine  
Cat. No. EW310



- New 2½" Wide Head
- 300% More Power
- 50% More Speed
- Cool Running
- 3 wide shearing heads available for new Sunbeam motor

© SUNBEAM, STEWART, CLIPMASTER, SHEARMASTER

FREE COMPLETE CATALOG—WRITE:  
**SUNBEAM CORPORATION**  
5400 W. Roosevelt Road  
Chicago 50, Ill., Dept. CB-REA



# Shelby Electric News

## Electric Heat Adaptable to Old, New Homes

The new home which Mrs. Mary Blankenship and her son, Larry, live in near Taylorville is one of the nicer all-electric homes of 1964. With 1,320 square feet of living area, the home includes two bedrooms, a large family room, living room, entry and a beautiful all-electric kitchen.

Under the living area is a full basement with room for laundry and recreation area.

The Blankenships spent many hours planning their new home. It was during this time that your power use adviser helped in the planning of electrical wiring and heating. Electric heat was discussed from every angle. It was finally decided that electric ceiling cable would be the answer to perfect winter comfort.

Mrs. Blankenship and Larry have nothing but praise for electric heat. They say it is wonderful to leave home in the morning for work and not have to worry about the house's heating. The thermostats are easily set at the desired temperature for each room.

It is hard to convince an interested person that the floors will be very warm although the heat is in the ceiling. Visit your friends and see for yourself.

### OLDER HOMES TOO

Lately we have been hearing this question from our members: "Can you install electric heat in older homes?" We are glad to report "Yes."

An example is the home of Mrs. Helen Shaffer located 2½ miles southeast of Moweaqua which was built in 1898. It is a typical large farm home with four rooms and a bath downstairs and four rooms upstairs. Mrs. Shaffer decided to install electric heat last year. She first talked it over with the power use adviser who made recommendations for the type of electric heat that would best work in an older home. They chose electric baseboard and with proper insulation Mrs. Shaffer now has a warm and comfortable home all winter without the dirt and dust she used to have with her



The new all-electric Gold Medallion home of Mrs. Mary Blankenship is 10 miles north of Taylorville.

flame type of heating system.

We wish that more of our members who have older homes would consider electric heat when they change heating systems. It isn't as impossible as you might think to use electric heat in an older home. Come in and talk to Len W. Seaman about it. He will gladly make a visit to your home and look the situation over with you and make recommendations for the best possible electric heating for you and your family. All electric heating recommendations are made without obligation.



This is the old five-room home of Mrs. Blankenship.



Mrs. Helen Shaffer's 67-year-old home now is heated electrically.





Miss Elaine Mentz, cashier and receptionist for your cooperative, admires the home style humidifier located in the office lobby. The small air circulator fan puts about five gallons of water into the lobby air every 24 hours.

## Electricity Can Eliminate Your Humidity Woes

Today, as never before, people are conscious of the humidity in their homes. They have been deluged with articles about the damage that excess moisture in the summer and too dry air in the winter can do to their health and property. Everytime they go into their basements, home laundries, storage rooms or workshops they see for themselves what a problem humidity can be.

1. You benefit so many ways with a humidifier in the winter months. You awake refreshed because moistened air aids body comfort. Your plants thrive when the air is moist instead of desert dry. Your furniture lasts longer — moist air helps prevent loosening joints and peeling veneer. Carpets shed less and retain their resiliency longer. Annoying static shock is eliminated with ample humidity in your home.

2. The hot muggy days of summer are coming and we all remember how uncomfortable we can be when the humidity rises. Mildew, rot, mold, peeling wallpaper, cracked plaster, warped furniture and popping floor tile are a problem with excess moisture. An electric dehumidifier is the answer to more comfortable living.

These are just TWO more ways to live better — with electricity.

## Who Are Electric Cooperative Members

- A Member... is the most important person in our business.
- A Member... is the lifeblood of our business.
- A Member... is a person who brings us his wants — it is our job to try to fill those wants.
- A Member... is not dependent on us—we are dependent on him.
- A Member... is not an account number—he is a human being with feelings and emotions like our own.
- A Member... is not an interruption of our work—he is the purpose of it.
- A Member... is not an outsider—he is an essential part of our operations.
- A Member... IS, THEREFORE, DESERVING OF THE MOST ATTENTIVE TREATMENT WE CAN GIVE HIM AT ALL TIMES.

## Minute Mystery— Can You Solve It?

**Situation:** You must use the electric drill to make repairs on a piece of machinery outdoors.

### WHAT WOULD YOU DO?

A. Get an extension cord that will reach the work. Connect the drill grounding pigtail to the machine.

B. Use a three-wire grounded power cord.

### CORRECT SOLUTION

B. Use a three-wire grounded power cord connected to neutral of the electrical system. Make sure the drill is grounded through the three-prong plug. Never ground a portable electric tool to the equipment you're working on.

**Situation:** The convenient location for a new building is under the power line.

### WHAT WOULD YOU DO?

A. Go ahead with the building since the roof will be four feet under the wire.

B. Contact your power supplier to see if he can move the line.

### CORRECT SOLUTION

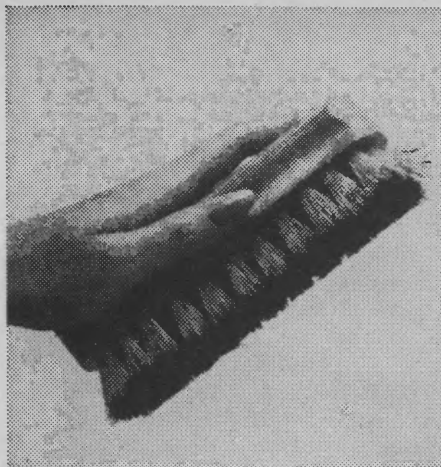
B. Contact your power supplier before you start construction. Ask your power supplier for minimum clearance for overhead wires.

## Is Your Farm Safe From Fire?

### CHECK SHEET FOR FARM FIRE HAZARDS.

DWELLING	YES	NO
Is there an opening in the attic for chimney inspection? ....	<input type="checkbox"/>	<input type="checkbox"/>
Is the attic free of trash? .....	<input type="checkbox"/>	<input type="checkbox"/>
Does anyone smoke in bed? .....	<input type="checkbox"/>	<input type="checkbox"/>
Is the fireplace ever used without the screen? .....	<input type="checkbox"/>	<input type="checkbox"/>
Are there extension cords under rugs? .....	<input type="checkbox"/>	<input type="checkbox"/>
Are there any frayed extension cords? .....	<input type="checkbox"/>	<input type="checkbox"/>
Is each circuit properly fused? .....	<input type="checkbox"/>	<input type="checkbox"/>
15 amp. fuse for No. 14 wire		
20 amp. fuse for No. 12 wire		
(If you have an all-electric home and electric heat disregard next question.)		
Is furnace pipe protected or at least 18 inches from wood? .....	<input type="checkbox"/>	<input type="checkbox"/>
Does the house have a fire resistant roof? .....	<input type="checkbox"/>	<input type="checkbox"/>
Are the chimneys in good condition? .....	<input type="checkbox"/>	<input type="checkbox"/>
Are matches kept out of reach of children? .....	<input type="checkbox"/>	<input type="checkbox"/>
<b>BARN</b>		
Is there a fused safety switch? .....	<input type="checkbox"/>	<input type="checkbox"/>
Are the fuses of proper size for the wire? .....	<input type="checkbox"/>	<input type="checkbox"/>
Are light bulbs protected by glass guards? .....	<input type="checkbox"/>	<input type="checkbox"/>
Is the wire size adequate for the load? .....	<input type="checkbox"/>	<input type="checkbox"/>
Is the tractor used or kept in the barn? .....	<input type="checkbox"/>	<input type="checkbox"/>
Does anyone smoke in the barn? .....	<input type="checkbox"/>	<input type="checkbox"/>
Are the lightning rod grounds in good condition? .....	<input type="checkbox"/>	<input type="checkbox"/>
Are there any breaks in lightning rods? .....	<input type="checkbox"/>	<input type="checkbox"/>
Are the points in good condition and not more than 25 feet apart? .....	<input type="checkbox"/>	<input type="checkbox"/>
Are hay and straw well cured before storing? .....	<input type="checkbox"/>	<input type="checkbox"/>

You can prevent fires! Inspect and be sure.



**No scrub...**



**no spray...**



**no scraping away!**



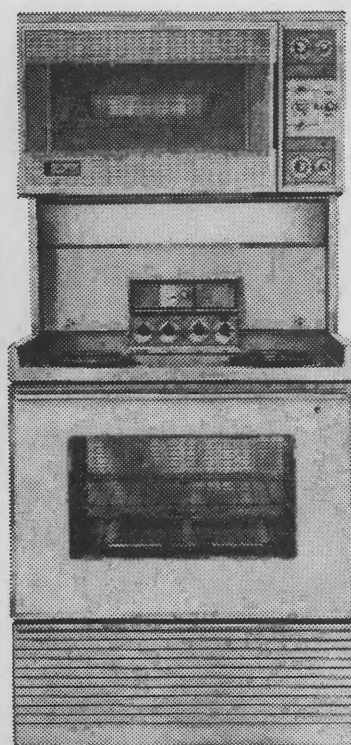
**Just throw out the foil  
and your Kelvinator oven  
is clean.**

**It's the only electric range built to use  
aluminum linings safely, quickly, easily.**

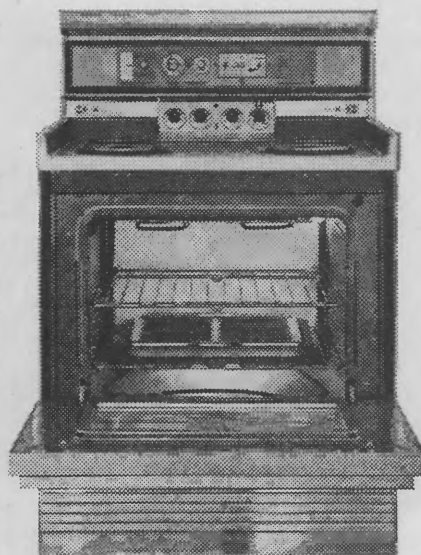
Special racks to hold aluminum foil linings come with every Kelvinator electric range, regardless of price. That means you simply throw away spatters and spill-overs, never have to go through the drudgery of oven cleaning again. What's more, only Kelvinator ovens are designed to give you perfect cooking results whenever you bake and broil with inexpensive aluminum foil linings.

See your nearest Kelvinator dealer.

Kelvinator, American Motors Corp., Detroit, Mich. Dedicated to Excellence in Rambler Automobiles and Kelvinator Appliances.



Two-oven Kelvinator Tri-Level range.



30" or 40" free-standing Kelvinator range.



# 'Fair Play' Bill Making Progress At Springfield

(Continued from page 6)

use power for the mutual benefit of all instead of for individual profits."

A GREAT MANY electric cooperative member-owners from throughout the state, deeply concerned over the need for territorial protection this year, had wanted to attend the May 4 committee meeting.

But most stayed away, feeling there was no need for hundreds to descend on the capitol for this hearing. A relatively small delegation, however, sat quietly in the hearing room, thoughtfully listening to every word.

Quite obviously they felt the legislators as a whole had a sound understanding of their problem.

A FEW WEEKS earlier 556 cooperative members and legislators had joined in a "get acquainted" dinner in Springfield. Speech making was held to a minimum.

Thomas H. Moore, general manager of AIEC, spoke briefly. Miss Patti Ticken, "Miss Illinois Rural Electrification," and second runner up in the national beauty contest, told of what rural electrification had meant in her own farm home.

But mostly the legislators and the cooperative members visited at the dinner table and came to know and understand each other better.

A Chicago legislator who may never have been in deep Southern Illinois sat with a member-owner of Egyptian Electric Cooperative. They talked earnestly. They exchanged views and experiences. And when the evening was over each had an even greater respect for the other.

"I've never seen such an impressive dinner meeting in Springfield," said one veteran Springfield observer at the end of the evening.

"By golly," said a friend of the cooperatives, "I really do believe legislators want to vote for what's right. And I can see that they sometimes have trouble learning the whole truth."

## ATTENTION BREEDERS:

If your beef herd  
hasn't been  
achieving the  
kind of results  
you've expected...  
start bullying  
them!

Sounds a bit cruel, but what we really mean is that when you breed your beef herd to Southern Illinois Breeding Association's gain and performance-tested bulls, you are employing the surest and most practical way of guaranteeing a superior beef herd and a quicker genetic buildup.

Even though your beef herd may be reaping an adequate income, the SIBA program can boost your results even higher. Tests have proven that SIBA-sired beef gain as high as 4 pounds per day over a 6-month period. And of course, extra pounds mean extra income.

Assure maximum production from your beef herd by taking advantage of the SIBA-bullying program today. The sooner you start, the sooner you profit.

Send to:  
SIBA  
RR 1  
Breese  
Illinois

I am interested in learning how the Southern Illinois Breeding Association program can improve the genetic buildup of my herd. Please send information concerning:

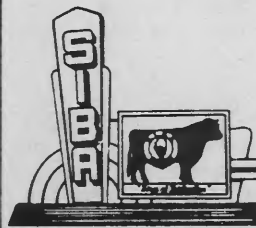
Beef Herds ..... Dairy Herds .....

Indicate number of cows in each herd.

NAME.....

ADDRESS.....

CITY.....STATE.....





# Shelby Electric News

Shelby Electric Cooperative

Phone 1540

Shelbyville, Ill.

## Plan to Attend Your 27th Annual Meeting

In the next few days you will be receiving a booklet with the notice of our 27th annual meeting which is to be held Thursday evening, June 10 at 7:30 p.m. in the Forest Park Auditorium in Shelbyville.

This will be one of the most important days of the year so far as the cooperative is concerned. At this meeting you will hear reports from the president, manager, secretary and treasurer in addition to electing two directors. The terms of Directors Wayland Bonnell of Owaneco and George Lumpp of Findlay will expire.

**THE EARLY** bird prize this year will be a color television set. To be

eligible for this prize you must be registered by 7:30 p.m. There are many other valuable prizes which will be given away during the meeting.

Dr. L. H. Appel of Lincoln will be the principal speaker. Dr. Appel, minister of the Lincoln Christian Church, has been very prominent in church and community affairs. He serves on the Board of Trustees of Minnesota Bible College and Lincoln Christian College and Seminary. He has served the community as president of the Kiwanis Club, a member of the Park Commission and a member of the new High School Survey Committee.

An outstanding public speaker, Dr. Appel is frequently requested

to speak for many occasions relating to the church as well as for farm, business and professional groups. We feel we are quite fortunate to have Dr. Appel as principal speaker.

**THE PROGRAM** is geared so that it should last no longer than two hours. All members of this cooperative should recognize that they have a voice in their own organization and it is their duty to voice their opinions at the annual meeting this year when the directors are elected. Please hold this date open so it will be possible to attend this meeting to be held at Forest Park Auditorium, Shelbyville, Thursday, June 10. Let's all try to make it a success.

## I'm Not a Crook

### By Your Electric Meter

You know, I'm acquainted with more folks than any other type of equipment because every person using electricity will have me on a nearby pole, on a wall of their home or on some other nearby location.

I don't have much to say because I'm so busy recording the amount of electricity that the folks use, but I really get "shook up" when I'm accused of being a crook. The reason I'm "shook up" is because I'm one of the most accurate measuring devices of modern times. Since I have to work day and night, I don't have much time to think about what people say—let alone repeat them.

**THE THING** I cannot understand is why folks are critical just of me. I never hear any complaint about my cousin, Gasoline Meter, when the automobiles give poor gas mileage. No, folks just have their cars checked. I look at the car and the way it uses gas just as I look at electric equipment and the electricity they use. Whether it's a car or

electric equipment, the way they are used makes a big difference and—sometimes either one can have something go wrong so it uses more gas or electricity. As an example,



the other day the folks at my house were talking with a neighbor and they couldn't understand why they used more electricity than my people when they had about the same number of appliances. I found out that the neighbors use more hot water because they use a tub and everyone fills it to the over-flow.

The neighbors have three hot meals a day compared to the one the folks have in our house, and the neighbors do a lot of home baking. Oh, I guess I could list a number of things that differ, but it all adds up to the difference in living habits.

**I WISH** that people could realize that each time the disk turns, it means I have measured a precise amount of electric energy. (Oh, I must mention that some of my friends do their job a little different, and their disk may turn faster or more times to register a like amount of energy.) Being a precision instrument, my manufacturer can certify my accuracy within 1/10 of one per cent.

Now, if you still think I am doing you wrong by running around in circles at too fast a pace, you can call or write my cooperative office. The telephone number is Shelbyville 1540; or contact your territory maintenance man and request a meter check. If I am registering too fast, he will repair me and adjust your bill. But if I am correct, you will be charged \$2 to pay for the meter inspection trip.

Well, I hope that my complaint about being called a "crook" will help to bring a better understanding of my job.



Shelby county youth started their electric club in Shelbyville on April 5. Leaders are Richard Simmering and Len W. Seaman, both of Shelby Electric Cooperative.



Christian county youth are shown at the formation of their club. Leaders are Roy Goode from Rural Electric Convenience Cooperative of Auburn and Len W. Seaman from Shelby Electric Cooperative of Shelbyville.

## New Electric Clubs Formed

Four-H electricity clubs were formed in Christian and Shelby counties during the months of March and April.

In each county officers were elected to direct the full fledged electric clubs. It is now possible for all boys and girls in rural areas as well as those living in town to join the clubs. In the past it had been necessary to be a member of an agriculture or home economics club before taking an electric project.

To all youths interested in electricity, you are more than welcome to join us in the electric clubs.



March 17 was a bad day for Lake Mattoon cottage owners. A tornado cloud suddenly dropped down on the southeast side of the lake taking everything in its path. Some cottages were scattered over a half mile area. Others seemed to explode, then fall back in a heap.

## *Secret to Success*

A soft answer to an unreasoning assault is not a sign of weakness at all. If anything, it is a sign of wisdom. When dealing with a person who carries a chip on his shoulder, don't bare your teeth in rebuttal; instead, show your mind to be a soundly reasoning, thinking machine.

## Keep Cool This Summer With An Air-Conditioner



Summers are cool and enjoyable with an air conditioner. Consider a window type, or for perfect comfort try a central air conditioner. Don't wait, the hot days will soon be here.



# New Hotpoint range with Teflon-coated oven walls

Now  
under  
**\$240**

slide 'em out  
and sponge 'em  
clean



Model RB340



Now — during Hotpoint's big 60th Anniversary Sale — you can actually get this marvelous new range for less than most hard-to-clean ranges!

Just slide out the oven walls and wipe them clean at the range, or wash them in the sink. They're coated with non-stick Du Pont Teflon®, so even baked-on grease washes off, without scouring.

Get this patented Hotpoint feature, plus automatic timer, wide, family-size oven with glass door, and other features—all for under \$240 right now. It's the greatest range value in Hotpoint history! Also sale-priced, the forty-inch model (RC440) which has similar exciting features. See your dealer today for his sale prices.

## Hotpoint

*first with the features women want most*

A Division of General Electric Company • Chicago, Illinois 60644  
Hotpoint appliances are backed by a written 90-day replacement guarantee of satisfaction, in addition to the standard product warranty against defects.

# Problem: How To Use All That Leisure

(Continued from Page 9)

**DR. RIDINGER** swung quickly back to the subject of free time.

"Today one man with machinery and technological equipment and education produces five times as much as a man did in 1850 on a similar job—and in half the time," he said.

"This factor helps explain our prosperity, our great wealth of goods and why we have become a nation of consumers since there is so much to consume. And it begins to show why there is no need to work 10, 12 or 16 hours a day.

"Early in 1900 we were working 60 hours a week—farmers, office and industrial workers. Now this has shrunk by law to 40 hours a week and for many it is 35. Steel workers have been granted, at least those with five years' work records, a 12-week vacation every five years. They have a month's vacation every year.

"Also we're observing more holidays. For almost everyone the total is from seven to 13 holidays.

"Specialists who study these facts have come to realize that today we Americans have ten billion hours more free time than we had as recently as 1940 and it is predicted that by 1980—only 15 years away—we will have not ten billion hours more but a hundred billion hours more.

"The average working American, not an executive, has 121 free days per year—one in every three. No wonder the need for recreational facilities is skyrocketing!"

**SOUTHERN ILLINOIS** University at Carbondale long has played a leading role in helping develop the natural resources of Southern Illinois and elsewhere, Dr. Ridinger said. That is one reason the institution has taken the lead in development of recreational leadership.

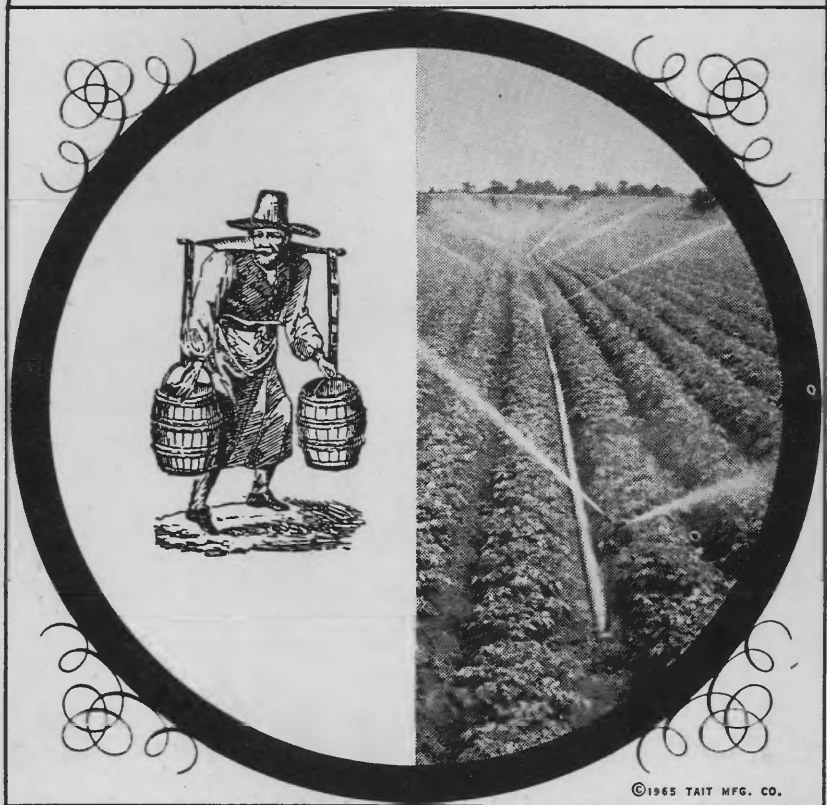
The educator asserted that Southern Illinois particularly is moving into the recreational field, developing its resources and offering fresh, practical inducements for vacation business.

The recreational revolution is in

full swing and because of it, Dr. Ridinger said, far greater prosperity lies ahead not only for Southern Illinois, served by such electric cooperatives as Southern Illinois Electric Cooperative at Dongola, South-

eastern Illinois Electric Cooperative at Eldorado and Egyptian Electric Cooperative Association at Steelville, but also for all of the state. A total of 27 distribution cooperatives serves this great territory.

A MODERN NEW RAPIDAYTON WATER SYSTEM MAKES THE DIFFERENCE



©1965 TAIT MFG. CO.

## PROTECT YOURSELF AGAINST SUDDEN PUMP FAILURE

Sudden pump failure can be critical: loss of crops, livestock, fire protection. Don't take that risk. Install a modern, new Rapidayton water system and be assured of all the water you need, 24 hours a day. Over 3,000,000 Rapidayton pumps installed since 1908. Buy now, as Tait cooperates with your local power supplier to provide you with better living through full pump power. Mail coupon.

**Rapidayton**



water<sup>up</sup>



Rapidayton division, The Tait Manufacturing Co., Dayton, Ohio 45401  
Send full details and give name of nearest Rapidayton pump dealer.

NAME \_\_\_\_\_

RFD OR STREET \_\_\_\_\_

COUNTY \_\_\_\_\_

STATE \_\_\_\_\_

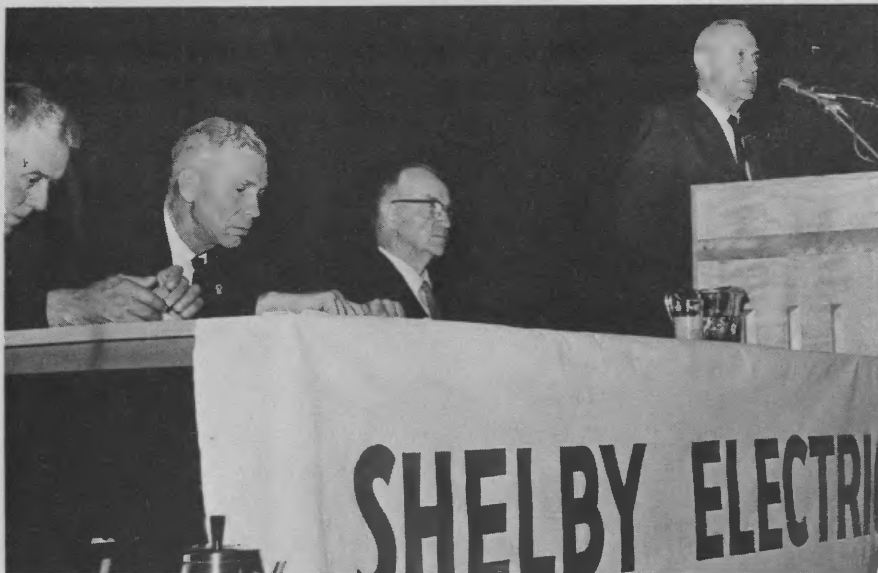


# Shelby Electric News

Shelby Electric Cooperative

Phone 1540

Shelbyville, Ill.



Manager W. L. Walker gives his report. Directors listening (from left) are Gerald White, L. Eugene Boldt and Wayland Bonnell.

## Large Crowd Attends 27th Annual Meeting

Shelby Electric Cooperative has been able to assess its member-owners as low a rate as possible despite increased maintenance and other costs, President LeRue Tice reported at the cooperative's 27th annual meeting recently.

"It is important to note that we



Cooperative member-owners re-elected Wayland Bonnell (left), Owaneco, and George F. Lumpp, Findlay, to three-year terms on the board of directors.

have had only one slight rate increase in the 27 years of operation," Mr. Tice said, adding "Your cooperative is in excellent financial condition."

Mr. Tice, Shelbyville, r.r. 4, told the more than 800 member-owners at the meeting that "Your cooperative is a valuable asset to you and to all the people within your territory."

He said it is estimated that for every dollar Shelby Electric spends in providing electricity the member spends \$4 for appliances and equipment. "This means that there has been some \$17 million spent for appliances and equipment in the Shelby Electric territory."

W. L. WALKER, manager, reported that the cooperative has stepped up its maintenance program to continue its dependable electrical service to its 6,200 member-owners.

Your employees, he said, "are dedicated to the cooperative's principle of giving you the best electric ser-

vice that can be obtained anywhere."

Mr. Walker called attention to the importance of supplying rural areas with low-cost electricity saying "The conveniences of electric living are very evident." Electric heating systems were installed in 25 more homes during the past year bringing the number of electrically heated homes in the cooperative's area to 173.

The manager also told the crowd that Shelby Electric is fortunate in having a "board of directors which is very faithful in working so hard for your best interests. It is truly remarkable how your cooperative has grown, a fact realized because of the dedication of the directors."

J. W. VAN SYCKEL, Moweaqua, the cooperative's treasurer, reported that the member-owners now own \$2,131,906 or 40 per cent of Shelby Electric's total assets.

Wayland Bonnell, Owaneco, the secretary, reviewed the board's major activities of the preceding year and told the member-owners that their presence at the meeting supports the rural electrification program on the local, state and national level.



LeRue Tice (seated) was re-elected president of the board of directors, Neil E. Pistorius (left) was named secretary and L. Eugene Boldt was chosen to be vice president again. The new treasurer is Wayland Bonnell.





Mr. and Mrs. Lawrence Gordon, Shelbyville, were winners of a color television set given away at the meeting. With them is W. L. Walker, manager of the cooperative.

## Attendance Prizes Awarded

A new color television set was awarded to Mr. and Mrs. Lawrence Gordon, Shelbyville, as an attendance prize at Shelby Electric

Cooperative's 27th annual meeting recently.

In addition to the grand prize, other appliances were presented to

the following persons:

Electric irons — Homer Howard, Shelbyville; Malcolm Kroenlein, Nokomis; Mrs. Lelia Newkirk, Lakewood; and Chester O. Largent, Shelbyville.

Electric fry pans — Ervin Reel, Strasburg, and Carl B. Brooks, Stonington.

Electric ovens — John McGuar, Tower Hill; Robert Sanner, Bethany; and Norleigh Harwood McNear, Cowden.

Electric can openers — William B. Carr, Champaign; Robert H. Ensign, Stewardson; and Zebert E. Dunaway, Owaneco.

Electric drills — Eugene W. Schmitz, Tower Hill; Lowell C. Quick, Nokomis; and William A. Rentfrow, Stewardson.

Electric coffee makers — Carl Hemer, Moweaqua; Charles Lamb Sr., Shelbyville; and Jacob Warner, Shelbyville.

Electric hair dryers — Lee Heckert, Shelbyville; Elmer P. Richards, Windsor; and Charles W. Martin, Pana.

Electric mixers—Elmer Gordon, Shelbyville; O. L. Storm, Windsor; and Ervin Latch, Stewardson.



4-H club members studying electricity got a close look at a large generating plant.

## Youngsters Visit Cooperative's Generating Plant

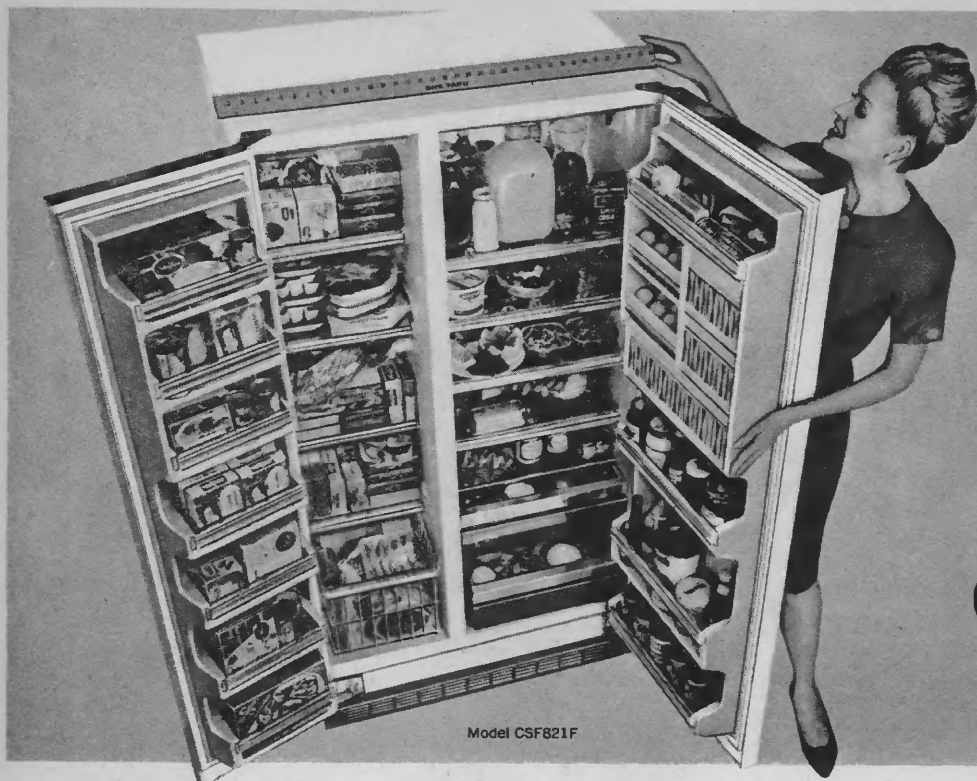
A group of Shelby county 4-H club members, their leaders and employes of Shelby Electric Cooperative recently visited the Southern Illinois Power Cooperative's electric generating plant south of

Marion.

After touring the large electric power plant, the group had lunch in one of the many recreation areas around the Lake of Egypt. The visitors also were given a

tour around the lake built as part of the generating plant.

Ora M. Snider, information director and lake development manager for SIPC, was the host for the day's visit.



# Hotpoint

## 60<sup>TH</sup> ANNIVERSARY

# TRADE-IN JUBILEE

Outstanding trade-in allowances,  
low sale prices—  
buy Hotpoint now and save!

### New Hotpoint 20.8 cu. ft. freezer-refrigerator, less than a yard wide!

Only 35<sup>3</sup>/<sub>4</sub>" wide, 65<sup>1</sup>/<sub>2</sub>" high and 25" deep—fits in the space of your old refrigerator. The big No-Frost freezer section on the left has 6 freezer shelves, plus 7 more in the door—makes frozen foods easy to get at. The big No-Frost refrigerator features 2 butter compartments, cheese keeper, 2 removable egg trays, plus an exclusive sliding adjustable shelf. And the whole unit rolls out on wheels so you can clean behind it. Don't tear up your kitchen to get more freezer-refrigerator space. Check this new Hotpoint "21"—and the terrific trade-in allowance on your old refrigerator—at your dealer's today.



Model CTF814F

### Hotpoint 13.7 cu. ft. no-frost refrigerator-freezer rolls out on wheels

Deluxe 2-door model has porcelain enamel swing-out vegetable crisper, porcelain enamel meat keeper, separate cheese keeper, new step-shelf for flexible storage, and **UNDER** more. Great trade-in allowance, too. **\$349**



Model LW570

### Hotpoint 15-lb. washer does two loads of wash at once

This 2-speed washer does in one load what your old machine takes two to do! A bigger tub, more horsepower and stronger parts get 15-lb. loads really clean. Yet it washes 2-lb. loads without extra attachments. All porcelain finish, outside and in, at no extra cost. Trade now, save! **UNDER \$220\*** Matching dryer model LB570, under \$150\*

### Hotpoint range with removable Teflon<sup>®</sup> coated oven walls

Has Hotpoint's patented no-scour oven, yet it's priced lower than most hard-to-clean ranges. Just slide out the oven walls, wipe them clean at the sink or at the range. This range also features automatic oven timer, rotisserie and glass door. 40" model RC450 **UNDER** also sale priced. **\$250\*** Trade now, save!



Hotpoint appliances are backed by a written 90-day replacement guarantee of satisfaction, in addition to the standard product warranty against defects.

\*See your participating Hotpoint dealer for his prices and trade-in allowances. Prices higher in Hawaii.



Model RB350

# Hotpoint

first with the features women want most  
A Division of General Electric Company • Chicago, Illinois 606

# New Offices Occupied by State Group

Nearly 300 persons visited new headquarters of the Association of Illinois Electric Cooperatives six miles south of Springfield during a recent open house.

The one-story limestone building contains 4,556 square feet of office and meeting room space on the first floor plus an equal amount in the basement. The latter houses chiefly the printing and mailing departments which include the most modern of offset printing facilities and darkroom.

LYLE E. DUNHAM, director, the state associations member service department, described the new headquarters in this way in an article published by Contractors' Electrical Equipment magazine:

"The installation is not spectacular. It is not designed to dazzle. Instead it is intended to be intensely practical, economical and efficient, reliable and satisfactory over a long period of years."

The structure includes the latest ideas in electric heating installed by E. P. Allison Company of Chicago and manufactured by Radiant Electric Heat Company of Centerville, Iowa. Mr. Dunham worked with Radiant Electric in designing the system.

"We regard this installation as highly practical for office buildings of all kinds, plus hotels, motels, senior citizens' homes and similar structures," a company spokesman said.

"This will stand the test of time and the wisdom of the electric heating plan will become increasingly apparent as the trouble-free years pass."

RAYMOND W. RUSTEBERG, Valmeyer, president of the state organization, said of the new building:

"We believe it will prove of considerable interest to builders and others concerned with planning and construction of similar structures.

Our estimates indicate heating costs will be less than \$600 annually."

Mr. Rusteburg said cost of the building and three-acre site was around \$140,000.

Members of the building commit-

tee are Walter Johnston, chairman; Owen Chaney, Paul Deisher, L. C. Groat, Loyd Pickard and W. L. Walker.

Ralph N. Morrisett, Springfield, was the architect.

A MODERN NEW RAPIDAYTON WATER SYSTEM MAKES THE DIFFERENCE



©1965 TAIT MFG. CO.

## EXPANDING FARM OPERATIONS REQUIRE MORE PUMP POWER

Farms are getting larger—requiring more water. More water for increased livestock production, irrigation, waste removal, spraying, and the utilization of ponds. Modern "big power" farming must have FULL PUMP POWER and dependable 24-hour-a-day service. Get it with a Rapidayton water system—engineered to meet the exact needs of your own farming operation. Mail coupon today for valuable, helpful information.

*Rapidayton*



water<sup>up</sup>



Rapidayton division, The Tait Manufacturing Co., Dayton, Ohio 45401  
Send full details and give name of nearest Rapidayton pump dealer.

NAME \_\_\_\_\_

RFD OR STREET \_\_\_\_\_

COUNTY \_\_\_\_\_

STATE \_\_\_\_\_





# Shelby Electric News

Shelby Electric Cooperative

Phone 1540

Shelbyville, Ill.

## All-Electric Homes Make Living Comfortable

**T**his spring Mr. and Mrs. Don Augenstein of Stewardson informed your cooperative that they were planning a new home. Being no different than any of us they were wanting a home that was modern with a floor plan that would fit into their rural living.

When we mention all-modern living, naturally it is all-electric and of Gold Medallion quality. What could be nicer than an all-electric home?

The Augensteins said their old home is over 60 years old and beyond repair. As soon as their new home is completed they will tear down the old homestead.

**THE AUGENSTEIN** home is one of many new all-electric homes going up this year on the cooperative's electric lines. Also, there have been several homes which have been converted from the old, flame-type home heating to electric heating.

There are several methods of electric heating available in the home today. You can use electric cable in the ceiling, electric baseboards or wall heaters. Then there is electric hot water baseboard or electric furnaces, both hot water or hot air. Most of these methods of flameless heating will give you individual room controls.

**ELECTRIC HEAT** can be used in one room or in any part of your home.

What could be nicer for the bathroom on these cool mornings and evenings than electric heat? Turn it on to warm the bathroom and turn it off when you are finished. No need to start a furnace up just to warm the bathroom for bathing.

Let us help you with your home planning. Remember our help is free and without any obligation.

Shelby Electric Cooperative will be glad to draw up individual plans designed for your own home. These plans will show you what materials are needed and how much the estimated operating costs will be.



The farm home of Mr. and Mrs. Don Augenstein three miles northeast of Stewardson will soon be just a memory. Their daughter, Rhona, and son, Billy, are in the foreground.

### Hot Water Problems Bothering You?

If you are having a shortage of hot water in your home, we can be of help.

Remember, your cooperative has quick recovery electric hot water heaters ready for delivery at a record low price. These heaters are glass-lined and guaranteed. Ask your service area employe or call the office. You may also ask your local water heater dealer.

The heaters are good and you can't beat the price.

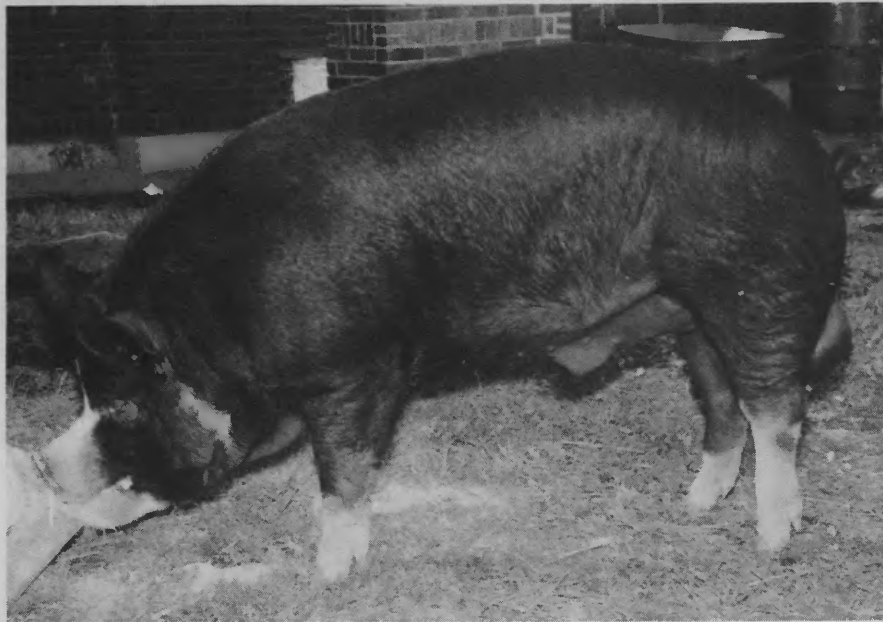
Also, remember that an all-electric home will enable you to save money. Your cooperative allows you cheaper rates as you use more electricity. Electric water heaters also are economical because they are efficient.

### Dehumidifiers Stop Rust and Mildew

No need to worry about tools rusting in your basement, or clothing and leather goods mildewing. An inexpensive dehumidifier takes damaging moisture from the air and does it for only pennies.

The new, lightweight models are completely portable and can be moved to different areas. Their big capacity for moisture removal means that a single unit can usually solve your problems even if you have a large basement area.

With excess moisture removed from the air you will be pleasantly surprised to find that a basement recreation room will be much more comfortable. Live modern—the electric way.



This Berkshire boar owned by LeRue Tice & Sons was judged the grand champion in the Berkshire division at the 1965 Illinois State Fair.

## Co-op Members Win Prizes At State Fair

Congratulations to the many Shelby Electric Cooperative members for their outstanding records set at the Illinois State Fair.

Dennis Barnard, son of Mr. and Mrs. Morris Barnard of Blue Mound, had the grand champion steer at the fair. Hercules II, a Hereford, weighed 1,025 pounds.

DENNIS W. RINKER of Strasburg showed the champion Angus heifer in open and Land of Lincoln classes in the junior livestock show. Dennis is the son of Mr. and Mrs. Everett Rinker.

Joe Hampton, Jr., son of Joe Hampton, Windsor, was the winner of the Premier Breeder Award for Southdown sheep.

LERUE TICE and Sons of Shelbyville were triple winners in the Berkshire swine division. The Tices showed the grand champion boar and sow and the reserve grand champion boar at the fair.

Mr. Tice is the chairman of Shelby Electric Cooperative's board of directors.

Guy Baker of Shelbyville has shown Tamworth hogs at the Illinois State Fair almost continuously for the past 43 years. This year he had the senior and grand champion Tamworth sow in the open class, senior and grand champion sow in the Land of Lincoln classes, plus several other winning ribbons.

## Live Modern— The Electric Way

"Mommie, what's a dishwasher?" That's not such a funny question as you might think since close to five million families already have automatic dishwashers.

There are many features and benefits you'll find in the new electric dishwashers.

Large capacities: the new washers hold more, yet are no larger on the outside than earlier models. Once-a-day dishwashing is adequate for the average family.

Cleaning power: extremely hot water and strong detergents, in addition to the water's powerful scrubbing action, make for sanitary dishes, reducing the danger of spreading colds and other infections through the family. The water is far hotter, and the detergent much stronger than your hands can stand.

Special cycles: many of today's automatic dishwashers custom wash your dishes with gentle cycles for fine china and crystal, heavy duty for cookware, plus a regular cycle for everyday dishes.

There were no doubt many more cooperative members who had winning exhibits at the fair. We are sorry not to have a record of them.

Congratulations to all cooperative exhibitors.

## Dishpans Are Obsolete



# Outstanding Values on Hotpoint appliances!

## New Hotpoint washer handles 2 to 16 lb. loads!

**Just out—no other like it.** Washes tiny 2-lb. loads without special attachments ...up to 16-lb. loads without straining (it has a big 1/2 h.p. motor and commercial size transmission). No-rust porcelain finish, outside and in, at no extra cost. Dial the cycle to fit the load. Buy now and save.

**\$189\***

low priced at about



Model LW650

Model LB670

## New Hotpoint dryer has 5-year parts replacement warranty!

**Proof of quality—**Hotpoint gives you a written 5-year warranty on the motor and other critical hard-working dryer parts. Here's more: The dryer shuts off—automatically—when clothes are dried just right. De-wrinkling cycle cools clothes...prevents wrinkle-setting. Safety start protects the kids.

† Blower, blower clamp, thermostat, drum motor, centrifugal switch, dryer drum and electrical heat coil.

low priced at about **\$149**

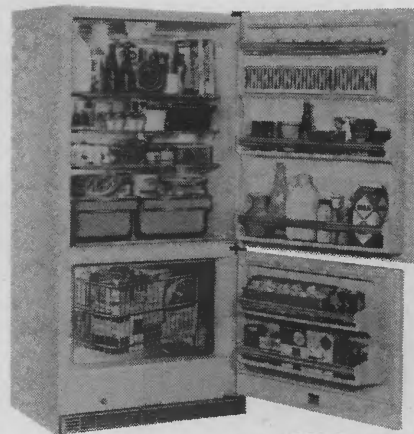
## Hotpoint range with removable Teflon-coated oven walls

New low price for this range with Hotpoint's patented no-scour oven—far less than for most hard-to-clean ranges! Just slide out the oven walls, wipe them clean at the range or wash them at the sink like dishes. Other deluxe features include automatic oven timer and glass oven door. 40" model RC440 also sale-priced.

low priced at about **\$219\***



Model RB340



Model CBF515

## Hotpoint No-Frost refrigerator-freezer rolls out on wheels

Deluxe 14.8 cu. ft., 2-door model has adjustable sliding shelf, 2 porcelain enamel slide-out crispers, separate cheese keeper... swing-basket in big freezer below. And no defrosting, ever. Loads of storage, lots of other extras. Just roll it out for easy cleaning, sweeping, waxing. Buy now and save.

low priced at about

**\$329**

**HOTPOINT 90-DAY REPLACEMENT GUARANTEE OF SATISFACTION**  
If you are not completely satisfied with your new Hotpoint appliance, and notify your dealer within 90 days from date of purchase, it will be replaced with a comparable Hotpoint model at no cost to you.

\*See your participating Hotpoint dealer for his prices and trade-in allowances. Subject to Fair Trade where applicable. Prices higher in Hawaii.

# Hotpoint

first with the features women want  
A Division of General Electric Company • Chicago, Illinois 606



# News Team Tells of 'Other Side'



Barbara



Sid

A couple of big city reporters, who decided they'd like the life of small town newspaper publishing better, today, after years of experience, agree that they do. There's nothing quite like it.

Some of the experiences, views and observations of Sid and Barbara Landfield aboard the prize-winning Democrat-Messenger of Mt. Sterling (population 2,262, circulation 3,050) are contained in their just-published book, "The Other Side of the Sheet".

Mr. Landfield, who formerly worked on the Chicago Sun and later the Chicago Sun-Times, is co-publisher with George Davis.

Mrs. Landfield formerly worked for the exacting City News Bureau in Chicago and is the author of hundreds of encyclopedia articles. Her newscolumn appears in the weekly newspaper her husband and Mr. Davis publish.

The new book is a collection of essays, articles and critical commentary on the life and the time, much of it written in a humorous vein.

"The Other Side of the Sheet" may be obtained by writing Mr. Landfield, Mt. Sterling, Ill., 62353, or by ordering from any bookstore or from the publisher, Exposition Press, Inc., 386 Park Ave. South, N. Y., N. Y. 10016. The price is \$4.

## ★ ★ ★ BULLETIN ★ ★ ★

A SPECIAL ENROLLMENT FOR HEALTH INSURANCE PROGRAM 7-434 IS NOW AVAILABLE TO RESIDENTS OF THIS STATE.

### GUARANTEED RENEWABLE FOR LIFE!\*

\*AT RATES IN EFFECT ON RENEWAL DATES

#### MONTHLY RATES

Plan 7-434

AGE AT ISSUE	18-29	30-39	40-49	50-59	60-64	65-69	70-74	75-79
Male	1.77	2.09	2.33	2.51	2.64	2.75	2.86	3.01
Female	2.68	2.68	2.68	2.68	2.96	3.18	3.41	3.70
Children under 18	.94							

Rates shown apply when policy is written on two or more members of a family. For an individual, add 50 cents.

**You Can Also Apply for Plan 7-452 Even If You have  
Had Heart Trouble, Cancer or Other Serious Illness**

**Hospital — Surgical — In Hospital — Doctor Bills — Nursing Home**

#### NOW! . . .

You can apply even if you have had Heart Trouble, Cancer, Diabetes, or other serious illness.

#### EXCLUSIVE FEATURES

Pre-Existing Conditions, Injuries or Sickness if declared in Policy Application, will be covered after Six Months from Date of Policy.

★ NO AGE LIMIT

★ NO WAIVERS

★ LIFETIME RENEWAL GUARANTEE

**BENEFITS ARE PAYABLE IN ADDITION TO**

## MEDICARE

DUE TO THE OVERWHELMING REQUESTS FOR THIS PROGRAM, THE SPECIAL ENROLLMENT WILL BE AVAILABLE FOR A LIMITED TIME ONLY.

ALL PERSONS, REGARDLESS OF AGE OR HEALTH, WHO WISH TO RECEIVE INFORMATION EXPLAINING THIS PROGRAM ARE REQUESTED TO COMPLETE THIS FORM AND MAIL TO:

DEPARTMENT OF INQUIRY  
GUARANTEE RESERVE LIFE INSURANCE COMPANY  
1114 RIDGELY BUILDING  
SPRINGFIELD, ILLINOIS 62710

Name \_\_\_\_\_

Date of Birth \_\_\_\_\_

Address \_\_\_\_\_ RFD \_\_\_\_\_

City \_\_\_\_\_ State \_\_\_\_\_



# Shelby Electric News

Shelby Electric Cooperative

Phone 1540

Shelbyville, Ill.

## Cooking Is Easy With Electricity

An electric range (or built-in electric cooking and oven) is a "must" in every Gold Medallion Home. Even the compact kitchen of a small, modestly priced Gold Medallion Home can be well-planned, with adequate cabinets and counter tops — thanks to the space-saving design of modern electric ranges. Many new home builders take advantage of the versatility offered by the two-piece, built-in ranges which consist of separate oven and cook-top units. These can be installed wherever each will be most convenient. Homemakers like this arrangement because it puts the oven at eye or waist level.

**SURFACE COOKING** units of new electric ranges, whether part of a built-in cook-top or installed in a free-standing or "drop-in" range, offer dependable, controlled heat for every cooking need. On some models, each surface unit is really "three-in-one." A special switch permits selection of a precise heat pattern to fit a 4, 6 or 8-inch utensil. No heat is wasted.

Some electric range manufacturers now offer surface-unit controls built into exhaust hoods, mounted above the cook-top. This puts controls at eye level—out of reach of small children, but convenient for mother. Others put controls in a console mounted alongside the units or at the rear of the cook-top.

**FLAMELESS** electric ranges are so easy to clean too! Of course, there's no greasy soot to soil walls or curtains. But spills do happen—even in the best of kitchens. Therefore, electric range manufacturers have given special attention to ease of cleaning when designing surface units and ovens as well.

Today's electric ranges are available in a variety of colors too. Decorator shades, brushed chrome, copper and wood tones help make Gold Medallion Home kitchens beautiful as well as functional.



Flameless electric ranges with automatic timers can have dinner waiting when working couples come home at night.

## How to Earn a Gold Medallion

Each Gold Medallion Home must meet four basic requirements before it can be certified as such. While these requirements vary from one area to another, in general they will be as follows:

1. **Extra Wiring Capacity:** A Gold Medallion Home won't "grow old" electrically. It has plenty of branch circuits, convenience outlets and switches, plus a big main panel with spare capacity for future needs.

2. **Major Appliances:** To qualify as a Gold Medallion Home, the house must be equipped with an electric range (or built-in oven and cook-top) plus at least three major electric appliances selected from the following list:

Washer  
Dryer  
Washer-Dryer\*

Refrigerator  
Refrigerator-Freezer  
Central Air Conditioning  
Room Air Conditioner  
Room Heat Pump  
Dishwasher  
Water Heater  
Garbage Disposer

\*Qualifies as two major appliances

3. **Light for Living:** Lighting fixtures or structural lighting must be installed in specific locations where proper illumination will contribute to comfort, safety and beauty.

4. **Electric Heat:** This requirement, of course, is what makes a Gold Medallion Home "total" electric. However, unless the home also meets the other three requirements outlined above, it cannot earn the Gold Medallion Award.



## Powerful Force Strikes Ground

One of our worst electrical storms took place about two months ago. This picture captured just one of the many bursts of electrical energy.

During this one evening's storm, your cooperative lost several poles and insulators as a result of this uncontrolled electrical force. Also, there were several members out of electric service for short periods of time.

We regret these outages, but they were unavoidable.

## Poor Lighting Detracts From Decorating Scheme

If you are depressed by the drabness of a decorating scheme that was so delightful a couple of years ago, the problem could lie in poor lighting.

The American Home Lighting Institute cites insufficient or improper lighting as an important reason why many decorating plans go awry.

A generous amount of well distributed light is essential for true color rendition as well as bringing to life grains, patterns and textures.

## No Waste With Electric Heat

Twenty-five years ago a house without a chimney was as rare as a television set or a jet airplane. Today, you see them everywhere, and it's a sign of progress. In many new communities across the United States, the house with a chimney has become the rarity.

Before the advent of flameless electric heating, chimneys were a necessary part of the home because all fuel burning furnaces must discharge their products of combustion to the outdoors. Along with these combustion products goes a lot of wasted heat—heat that costs money.

CHIMNEYS are fine if you expect to burn wood in a fireplace occasionally just to create an old-fashioned atmosphere, but for the sake of heating they are as efficient as a horse-drawn wagon on the Pennsylvania Turnpike. That's why the chimney is rapidly disappearing from the American scene and will, in time, become the symbol of a by-gone era.

Today's heating system uses flameless electric heat. You don't burn fuel at 50 per cent or 60 per cent efficiency but instead use electricity at 100 per cent efficiency to provide more comfortable heat without smoke or soot and, best of all, without an expensive chimney.

## Flameless Water Heaters Fit In

In addition to the fact that its heavy insulation keeps heat in the water, these flameless appliances have additional reasons why they are easier to install.

They keep plumbing at a minimum and you can place them anywhere electricity can reach, and that's anywhere in your home. Ease of placement means an electric water heater can be installed nearest the point where hot water is used most often.

AND YOU CAN set an electric water heater and practically forget it for years — no flame to develop hot spots that will harm its interior and require replacement or repairs.

The heat's in the water, not in the room, with a flameless electric water heater. That's good news if space is a problem in your household and you have to install a water heater in an area where you or your family gather or work.

Only flameless water heaters are insulated "all round" and "top and bottom" too, like a vacuum bottle. During warm spells this can be a blessing. It also means that you can install an electric water heater in closed or open areas.



A dog's life—and the family's too—is a good one with a flameless water heater in the background for plenty of hot water.



# NEW FROM HOTPOINT!

Deluxe 13.7 cu. ft. No-Frost 2-Door Combination  
Refrigerator-Freezer

AT A DOWN TO WORTH PRICE!

NO-FROST  
102-LB.  
FREEZER

NO-FROST  
REFRIGERATOR

ROLLS OUT  
ON WHEELS  
FOR EASY  
CLEANING,  
SWEEPING  
AND WAXING



No-Frost Model No. CTF614

*Treat your family to these quality features*

- NO-FROST 102-LB. FREEZER
- NO-FROST REFRIGERATOR
- 22 SQ. FT. OF SHELF AREA
  - STEP SHELF
- PORCELAIN-ON-STEEL MEAT KEEPER
  - SLIDE-OUT SHELVES
  - TWIN CRISPERS
- INDIVIDUAL DAIRY STORAGE
- BUTTER SPREAD CONTROL
- CONSTANT COLD CONTROL
  - SPLIT SHELF
- DELUXE CALGLOSS CABINET

VALUE  
PRICED  
at your local  
Hotpoint Dealer  
NOW!

# Hotpoint

*first with the features women want most*

A Division of General Electric Company • Chicago, Illinois 60644