

NEWS, NOTES & VIEWS 10/17



Maintaining Right-of-Way

A contractor with Poor Boy Tree Service does follow up spraying in Pike County.

Co-op forestry crews along with contractor crews are clearing right-of-way in areas throughout the service territory. This includes tree pruning, brush clearing, and/or tree removal. We also do follow up spraying as it's more cost effective than removal. All of our personnel who spray have passed the Illinois Department of Natural Resources tests to ensure full compliance.

Trees are an essential part of the environment. However, during storms, they can cause outages and blinks for electric members. Outage prevention and safety is why the co-op does year round right-of-way maintenance.

continued...



Illinois Electric Cooperative

P.O. Box 80, Two South Main Street
Winchester, Illinois 62694

www.e-co-op.com
1-800-468-4732

Your Touchstone Energy® Partner



This institution is an equal opportunity provider and employer.

Working to improve the quality of life in the communities we serve since 1936.

Planting the

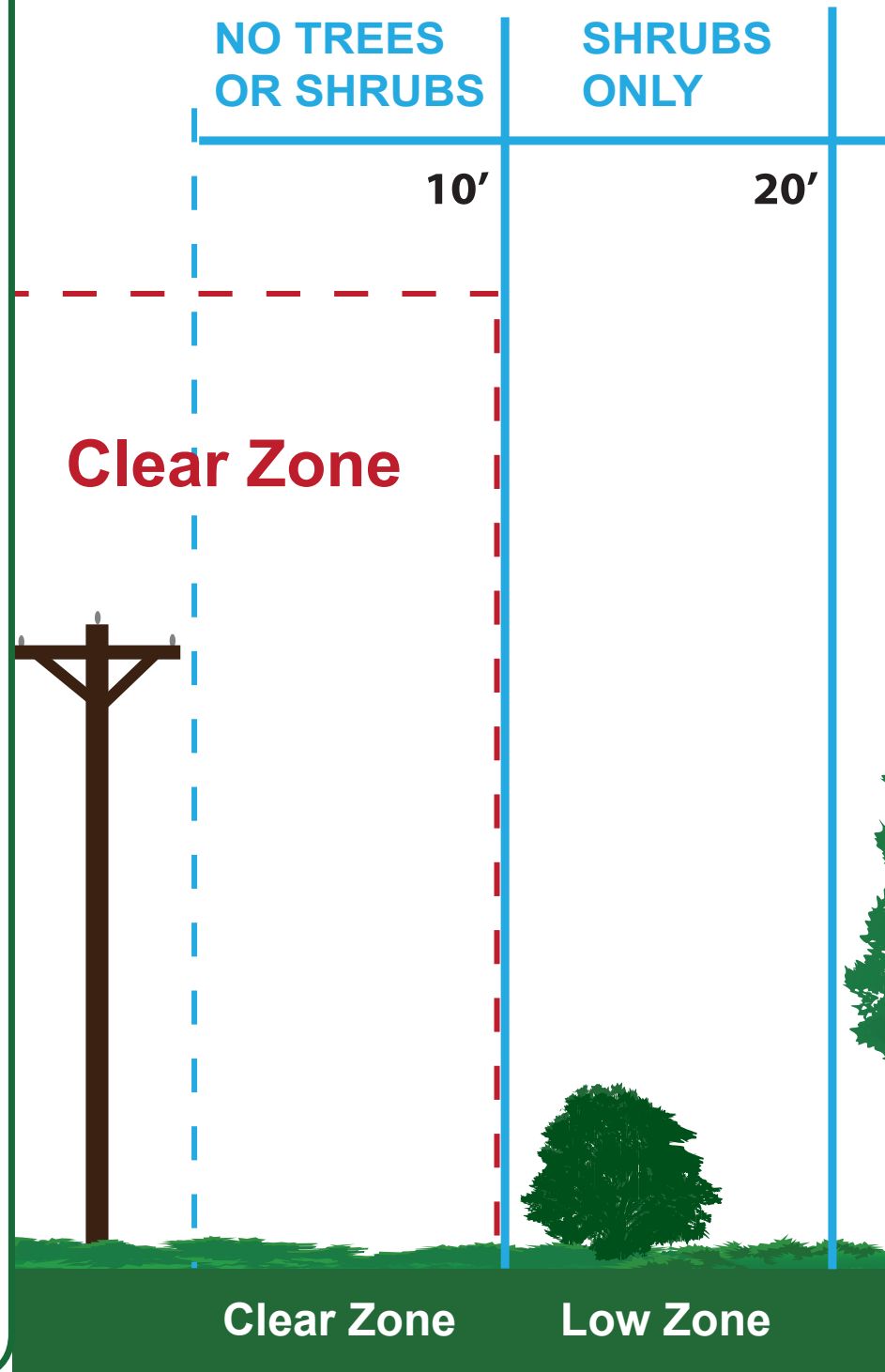
It doesn't take long for a tree to grow bigger than expected. The illustration on the right is a guide on where to plant trees in relation to our electric lines.

If a tree is in the "Clear Zone," we must trim it back. Tree trimming is something we must do for several reasons. First, and most importantly, safety is a concern. Whether it's a child climbing a tree that is in contact with a line or a limb that might fall onto a line, prevention is key. Second, tree trimming assures better service. We continue to strive for fewer outages and fewer blinks.

If you have a tree that is in a line and would like to have it trimmed, we are happy to come trim it back for you. We know that after trimming the trees don't initially look pretty, but over time the tree will grow out. Our intent is to encourage future growth on the tree to be away from the lines.

If after seeing the tree trimmed you decide that you would rather have the tree taken out, we will do that for you as well. We can also give you a voucher for a new tree that will not grow as large.

Our forestry crews and contractors include certified arborists. If you have any questions prior to or after tree trimming or planting, please feel free to give us a call at 1-800-468-4732. To find our full forestry and right-of-way guidelines, please visit e-co-op.com.

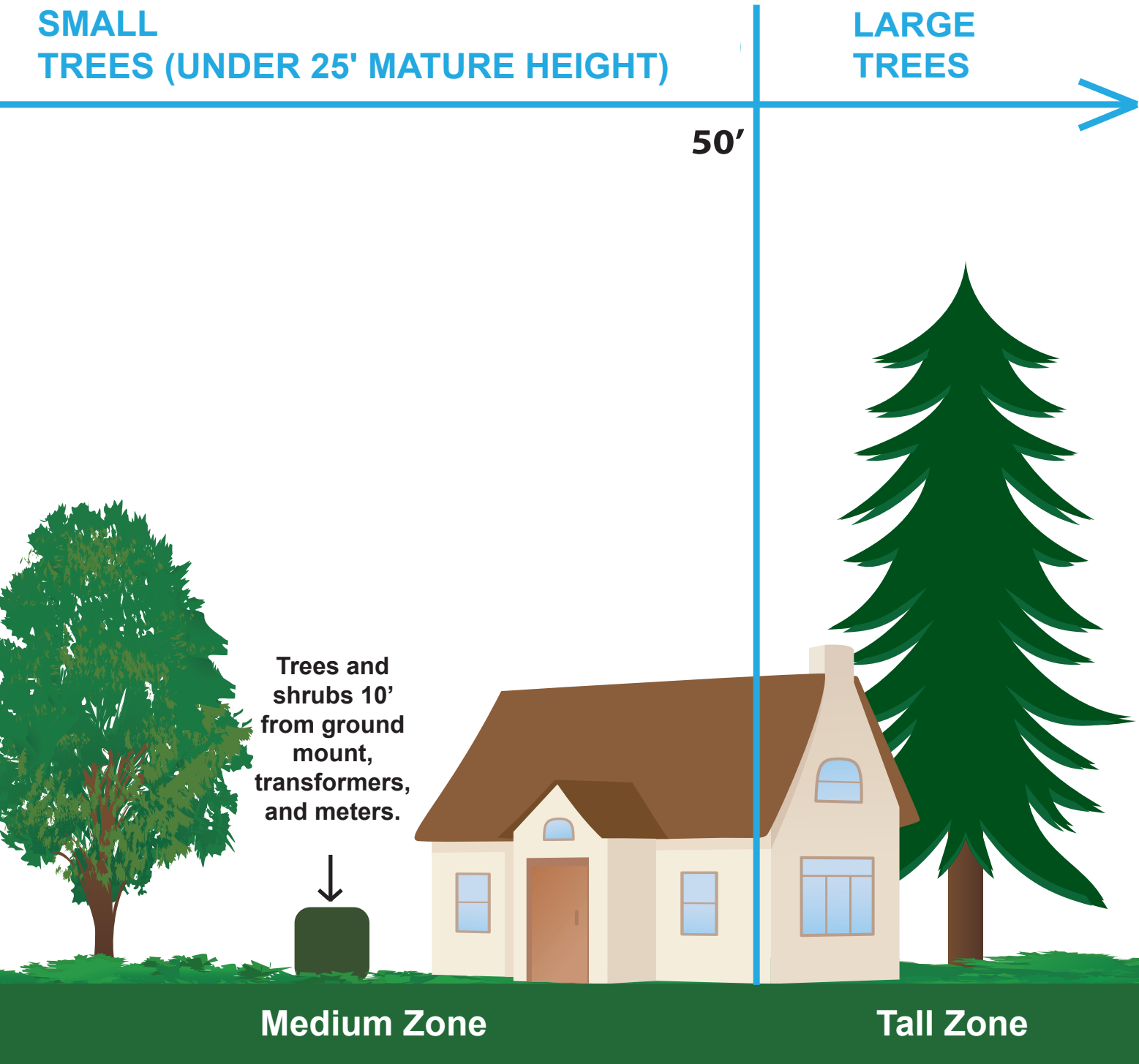


No matter which zone you're planting when fully grown. A minimum of 10

Right Tree in the Right Place

**SMALL
TREES (UNDER 25' MATURE HEIGHT)**

**LARGE
TREES**



Medium Zone

Tall Zone

in, be sure that the tree and its branches will not reach into the Clear Zone
feet clearance should be left between a power line and any branches.

On October 21 and 22, 2017 the Brussels Visitor's Center, the Calhoun Historical Society, and the Center for American Archeology will be open to visitors. All three locations will have Barn Quilt Trail maps for sale and be able to share with visitors more information about the weekend tour activities.

This year the Quilts, Barns and More Tour will include stops at historic farms with old barns and barn quilts. Along this route--DeGerlia /Gresham Hollow (just north of the Hardin bridge) a total of 6 barn quilts mounted on historic buildings will be viewed. Gene and Ilona Breden and Terry and Robbie Strauch will welcome you to their farms and will have the history of their farms and quilts available, along with a few outdoor food and craft vendors, exhibits, and "the quilts upstairs" at the Strauch's should you choose. A barn quilt will be in progress and the process will be explained.

Your route will then take you into the Village of Hamburg with a stop at the pavilion along the Mississippi River where some of the villagers and Mayor Sonny Williams will welcome you. Hamburg has two barn quilts to view.

As you leave Hamburg traveling north, Mike and Sue Vazis will welcome you to the Shaw Homestead along the Mississippi. The original log home is being restored by the Vazis and the log structure dates back to 1822-1825. Traveling north you will see an additional barn quilt and four more if you travel across Route 96. Ferry on over, the month of October!

For more details please contact the Calhoun Visitors Center at (618) 883-2032.

Calhoun Quilts, Barns & More Tour

October 21st and 22nd
9 a.m. to 4 p.m



Shown above is a quilt by artist Lynn Robinson on a log structure built around 1920 owned by Bob and Debbi Simon near Hardin.

Pay Your Bill Online Today at e-co-op.com!

- ✓ **Avoid Late Charges**
- ✓ **View Your Usage**
- ✓ **Schedule a Future Payment**
- ✓ **Pay with Check, Debit, or Credit Card**
- ✓ **Sign Up for Paperless Billing**



facebook

Find us on Facebook at facebook.com/illinoiselectric