



**ren**

January 1978

**Illinois Rural Electric News**

NOT A DRUG

Amazing "Burn-fat-by-the-hour" program  
Developed by Doctors at Boston Medical School

# BURNS AWAY MORE FAT EACH 24 HOURS THAN IF YOU RAN 14 MILES A DAY!

Incredible "Crash-Loss" Breakthrough Reported in *Reader's Digest* Works So Fast You Can Actually Measure the Difference In Your Waistline In Just 24 to 48 Hours!

Yes, LOSE up to 6 POUNDS the first 48 HOURS — LOSE up to 12 POUNDS the first 7 days — LOSE up to 4, 5, even 7 POUNDS MORE the next 7 days — and continue to burn away as much as 7 to 9 pounds more fat every 2 weeks thereafter, (if you still need it) . . . until you've finally lost 50 — 70 — 100 pounds OR MORE . . . without fasting, without constant willpower, without constant pangs of hunger or a single moment of body-racking exercise!

Recommended by the U.S. Government's very own doctors to members of Congress who want to lose weight fast . . . Hailed as the weight-loss "breakthrough of the century" by leading medical journals . . . here at last is the most effective NO-DRUG program for FAST — INSTANT — PERMANENT LIFETIME WEIGHT-LOSS ever made available to the public without a prescription!

**WORKS SO FAST THE FIRST WEEK ALONE YOU LOSE AS MUCH AS 1½ TO 2 POUNDS OF BOTH FLUID AND FAT EVERY 24 HOURS!**

Direct from the pages of the N.Y. Times and *Reader's Digest* comes reports of an incredible "fat burning" breakthrough by medical researchers at one of Boston's foremost medical schools! Reports of a new "crash-loss" program (featuring a remarkable natural substance) that safely yet surely steps up FAT-BURNING METABOLISM . . . forces your system to ATTACK bulging pockets of fat . . . and starts to shrink and burn that fat in just a matter of hours!

Yes, from one of New England's leading medical centers comes the new SUPER FAT-BURNER way to turn up your "inner furnace" . . . unlock those clinging pockets of fat . . . break them down SO FAST . . . you burn off excess bulge at the unbelievable rate of up to 6 POUNDS of both fluid and fat GONE the very first weekend alone!

Think of it! You actually burn away more fat each 24 hours than if you ran 12 to 14 miles a day! Lose more inches each week than if you did 300 sit-ups each morning and 300 push-ups each night! Actually LOSE as much as a FULL SIZE THE FIRST 7 DAYS . . . and from 3 to 5 inches off your waistline the very first month!

That's right! Weight-loss results and inches-off wonders that absolutely stagger the imagination. Just look:

**U.S. ARMY OFFICERS LOSE WEIGHT 3 TIMES FASTER THAN EVER BEFORE!**

**Case History #1:** When medical researchers in Boston, New York, Philadelphia and Los Angeles first tested this new hi-amino concept on a scientific weight-loss program . . . they reported astonishing results of as much as 12 POUNDS LOST IN JUST THE FIRST 7 DAYS! — 16 to 18 pounds gone by the end of week number two — and most mind-boggling of all — U.S. Army Officers actually losing weight 3 times faster than ever before! As much as 50 POUNDS GONE, like that!

**WAISTLINES SHRINK UP TO 3 INCHES IN 7 DAYS — A FULL 5 INCHES SMALLER IN A SINGLE MONTH!**

**Case History #2:** When first rumors of this

medical breakthrough leaked out to professional actors, actresses and celebrities . . . they immediately rushed to the offices of America's leading weight-loss specialists to get their hands on this "magic compound"; and no wonder! Because the first week alone they carved away as much as 2 pounds a day . . . 13 pounds a week . . . were forced to take in their belts 3 notches smaller in just 10 days!

**DOCTORS REPORT: AVERAGE LOSS — 57 POUNDS!**

**Case History #3:** But most significant of all . . . when universities, hospitals and medical schools, (such as New York's Leading Medical School and Cleveland's largest hospital) tested this newly discovered "crash-loss program" on patients who all their lives had been hopelessly overweight . . . they reported astonishing losses of as much as 2 pounds a day at the start . . . 20 to 30 pounds a month . . . as much as 70 pounds lost over a single summer season! — by simply stepping up their fat-burning metabolism and burning, melting, oxidizing 50, 70, 100 pounds of hard-set fat . . . FASTER, SURER than they had ever dreamed possible!

**WORKS LIKE "POWERED HEAT" — MAKES YOUR INNER FURNACE BREAK DOWN BODY FAT!**

What is this wondrous new development that helps safely stimulate fat-burning metabolism and shrink your body's fat cells the moment it starts working in your system? It is a totally new concept in the war against fat. An ANTI-FAT WEAPON unlike anything you've ever seen, or tried in your life. A FAT-BURNING aid that helps you convert body fat to body fuel! AUTOMATICALLY . . . and EVAPORATE excess pounds and inches starting the very first day!

Think of it! A medically proven formula that is such an effective reducing aid . . . that when combined with the food you eat on this "crash-loss" program . . . burns off as much fat each 24 hours as if you jogged up to 14 miles a day . . . or played 3 hours of tennis in the most brutal heat!

The name of this wondrous amino formula is "THERA-SLIM-100" and here is precisely how you use it to win the body and figure of your dreams as you:

- LOSE UP TO 4 TO 6 INCHES OFF YOUR WAISTLINE
- LOSE UP TO 2 TO 5 INCHES OFF YOUR HIPS
- LOSE UP TO 3 INCHES OFF YOUR THIGHS
- LOSE UP TO 4 INCHES OFF YOUR BUTTOCKS
- LOSE UP TO 4 INCHES OFF YOUR STOMACH

and as we've said before, starting not in weeks, but in mere days.

**HELPS YOUR BODY CONVERT STORED UP FAT TO BURNED UP ENERGY!** At this very moment — having read this far — you are but one short step away from LIFETIME IMMUNITY TO FAT! Now comes your FINAL

GIANT STEP into a whole new world of LIFETIME SLIMNESS.

Of course, there is one thing you must get in mind. With the "THERA-SLIM-100" way to LIFETIME SLIMNESS you cannot gorge yourself on all sorts of fattening foods, candies and desserts. Not that you'd ever want to, because with "THERA-SLIM-100" — due to your new, stepped up metabolism — besides enormous weight-loss you also experience a loss of hunger. Which makes it one of the easiest ways to lose weight fast. Now here's how simple it is:

**STEP #1 — YOU EAT**  
In addition to the wide and tasty selection of food you enjoy morning and night, (all scientifically programmed to help maintain a high-level of FAT BURN-OFF) . . .  
**STEP #2 — YOU TAKE "THERA-SLIM-100"** hi-amino compound

Once a day, you take "THERA-SLIM-100" in a glass of water, (just like refreshing fruit juice). This hi-amino intake helps keep the fat-burning chain-reaction going ALL 24 HOURS OF THE DAY — NON STOP!  
**STEP #3 — YOU HAVE AUTOMATICALLY STEPPED UP YOUR FAT-BURNING METABOLISM — SO YOU AUTOMATICALLY BURN OFF EXCESS WEIGHT!**

In virtually no time at all, you make your inner furnace accelerate fat burn-off. Safely, gently, yet surely you cause a gradual change in your fat-burning metabolism as you "rev-up" that inner furnace.

The result: Your body begins to eliminate stored-up fat and fluid at a rate so incredibly fast, the very first weekend alone YOU DRAIN AWAY AS MUCH AS 5 OR 6 POUNDS!

In short, with the "THERA-SLIM-100" weight-loss program, you force your body to automatically convert body fat to body fuel . . . automatically shrink fatty cells . . . drain off excess flab . . . flush it right out of your system ONCE AND FOR ALL!

Never before has medical science offered you a surer, faster, more effective weight-loss method, (short of total fasting) than this super fat-burning breakthrough development at one of Boston's Leading Medical Schools.

THE FACTS ARE IN! THE RESEARCH IS DONE! THE INCREDIBLE WEIGHT-SLASHING RESULTS HAVE BEEN PROVEN BEYOND A SHADOW OF A DOUBT BY MEDICAL SCHOOLS



— HOSPITALS — DOCTORS — AND SCORES AND SCORES OF OVERWEIGHT PATIENTS! NOW THE FINAL STEP IS UP TO YOU!

**REMEMBER:** You must see dramatic results in just 24 hours — results you can measure with both your scale and your tape measure . . . you must lose:

- up to 6 lbs. the first 48 hours
- up to 12 lbs. the first 7 days
- up to 7 lbs. more the next 7 days

or it costs you nothing! Simply return within 10 days for full refund (except postage and handling, of course). Act now!

© 1977 American Consumer Inc., Caroline Rd., Phila. PA 19176

MAIL NO-RISK COUPON TODAY

Mead-Wilson Pharmacal, Dept. JPD-47  
Caroline Road, Philadelphia, PA 19176

Yes, I want to burn away excess weight fast and permanently with this doctor's "crash-loss" program featuring amazing new hi-amino compound "THERA-SLIM-100".

Please rush me the offer I have checked below. If not delighted, I may return it in 10 days and you will refund the full purchase price (except postage & handling, of course).

- CHECK OFFER DESIRED:**
- (#009) Full 10-Day Supply . . . only \$7.95 plus 50¢ postage & handling.
  - (#017) Full 15-Day Supply . . . only \$10.95 plus 75¢ postage & handling.
  - (#025) Full 20-Day Supply . . . only \$12.95 plus \$1 postage & handling.
  - (#033) Full 30-Day Supply . . . only \$17.95 plus \$1 postage & handling.
- Amount enclosed \$ \_\_\_\_\_ PA residents add 6% sales tax. Check or money order, no COOs please.

**CHARGE IT:** (check one) Exp. Date \_\_\_\_\_

- BankAmericard/Visa
  - American Express
  - Master Charge
  - Bank Number \_\_\_\_\_
- Credit Card # \_\_\_\_\_

Name \_\_\_\_\_

Address \_\_\_\_\_ Apt. # \_\_\_\_\_

City \_\_\_\_\_ State \_\_\_\_\_ Zip \_\_\_\_\_

5480

Div. of American Consumer, Inc.

## IF YOU READ NOTHING ELSE — READ THIS!

What you see on this page is the announcement of the latest breakthrough by medical science in the war against fat. Developed at one of Boston's leading medical schools, the incredible weight-loss results this new "crash-burn" program delivers are so astonishing (average loss 57 lbs.) it has been featured in every leading medical journal . . . given headline coverage in such outstanding publications as *Reader's Digest* and the *New York Times*, to mention just a few. Aside from — ABSOLUTE STARVATION — there is no surer, faster, more effective way to slash away pounds and inches than with this Boston Medical School discovery.

However, before starting we advise you to consult with your physician to be sure you are in normal health and your only problem is obesity. Individuals with gout, heart disease, diabetes or pregnant women should not use it at all. As a matter of fact, we insist that you show this entire program to your family physician . . . have him check you regularly to make sure you're not losing too much, too fast . . . and advise when you've lost enough. See if he doesn't agree that the "THERA-SLIM-100" road to Lifetime Slimness, including the recommended progressive daily toneup, isn't by far the most effective approach to the conquest of obesity ever developed by medical science.

# Illinois Rural Electric News

## Keeping the yoke off

Just what has happened in rural America over the last 40 years can be effectively explained by many who were early members or employees of an electric cooperative.

They will tell of the kerosene lamps, wood cookstoves and real iceboxes that have been replaced by modern electric lights, electric ranges and electric refrigerators that not only made life more livable, but improved the standard of living in rural America. They also can tell of backbreaking grain shoveling that has been replaced by electric-powered conveyors that move more grain in minutes than a man could in a day.

They can talk at great length of the changes that have occurred, many of which are directly related to the benefits of rural electrification. In a sense, a yoke has been lifted.

And, thanks to agricultural technological advancements that have paralleled the improvements brought on by rural electrification, the farmer has attained a production level that enables him to grow enough food to feed 55 people.

It would seem that the advancements and improvements and the need to continue seeking ways to increase the livability and productivity would be obvious.

Yet, it appears the social and economic change that has led to the vastly improved standard of living, or quality of life, is not so evident to many, including people whose opinions are very influential.

Recently, during the Third National Conference on Rural America, much of the discussion centered on the nation's energy problems. One panelist went so far as to call for the swapping of tractors and petroleum-driven farm implements for draft animals. Another extolled the virtues of heating only with wood-burning stoves.

While at least one member of the audience challenged the panelists' opinions, a number of others undoubtedly agreed with such "solutions" to our energy problems.

To call for such regressive change is to deny that the country has the ability to solve the problems and to deny that advancements have improved the quality of life.

The good things that have happened to rural America because of electrification bring to mind what was said recently by Dr. Chauncey Starr, president of the Electric Power Research Institute:

*"Since the beginning of organized society, the availability of energy has been the 'constraint breaker' which has allowed mankind to attain even higher levels of productivity, technological sophistication and quality of life. If we are to continue to improve the standard of living throughout the world, we must act now to ensure that energy, the great 'constraint breaker,' does not, itself, become the constraining factor to human development."*

Forty years ago, the budding development of rural electrification began to break the constraints of rural America. Now, not only because rural America has become such an important contributor to the nation's economy but also because for the first time in this century nonmetropolitan areas are growing faster than the cities, continued development of rural electric power services is a necessity.

In rural America, the "constraint breaker" for many was the electric cooperative movement. Now, as Dr. Starr suggests, it is time to ensure that we have the capability to provide sufficient supplies of energy—and electricity—so that the lack of such does not become a yoke again.

January 1978

Volume 35, Number 9

Published by Association of Illinois Electric Cooperatives

LARRY F. ELLEDGE  
Editor

GORDON M. OLSEN  
Managing Editor

JACK D. HALSTEAD  
Associate Editor

SANDRA JOHNSON  
Advertising Coordinator

### ARTICLES

Illinois coal	4 and 5
Sights set on Florida	8 and 9
Fireplace shade	15
Longest career ends	18
Pumped-up collector	24 and 25

### FEATURES

COVER: When Clyde R. (Russel) Terry acquired his first old pitcher pump in 1972, he probably had no idea of what his collection eventually would become. (See story on pages 24 and 25.)

Lines with people in mind	10
Recipes	26 and 27
Patterns	29
Trading Post	30

## ren

### Illinois Rural Electric News

is the official monthly publication of the Association of Illinois Electric Cooperatives, 6460 South Sixth Frontage Road, Springfield, Illinois 62707.

Subscription price \$2.00 per year. Advertising and editorial inquiries should be directed to the Illinois Rural Electric News, P. O. Box 3787, Springfield, Illinois 62708. National advertising representative: Southwest Dailies, 360 N. Michigan Ave., Chicago, Illinois. Member, Illinois Press Association.

Acceptance of advertising by IREN does not imply endorsement by the publisher or the Electric Cooperatives of Illinois of the product or service advertised. Advertisers are screened by the publisher and every effort is made to protect the subscriber but the IREN is not responsible for the performance of the product or service advertised.

POSTMASTER: In using Form 3579, address to Illinois Rural Electric News, P. O. Box 3787, Springfield, Illinois 62708.

Second Class Postage paid at Springfield, Illinois and at additional mailing offices.

Publication number 258420

# Illinois has large stake

## The second coal age places unusual burden on Illinois as both producer and consumer

In 1910, the United States relied heavily on coal. Mills and factories in the eastern portion of the country used large amounts, and home use was high. At that time coal accounted for about 80 percent of the energy consumed in this country. In the next 65 years, as overall energy consumption was increasing about eight times, coal's place in the picture changed drastically.

The country moved from a coal age into a period of dependence on oil and gas until, in 1975, coal accounted for less than 20 percent of the national energy consumption. Oil and gas usage had grown to almost 75 percent.

Today, as the nation faces rapidly shrinking supplies of oil and gas, the country is entering the second coal age.

And, as the country moves into that second coal age, the significance of the changes will be quite noticeable in Illinois, perhaps more so than in any other state.

Illinois occupies a unique place in the nation's coal picture. The state has the largest known reserves of bituminous coal in the United States. Two other states—Montana and North Dakota—have larger identified coal resources, and Montana even has larger reserves of all types of coal. (Coal reserves are described as the coal resources in the ground which are minable by 1974 standards.) But, the Illinois bituminous coal has a much higher heating value than the softer subbituminous and lignite western coals of Montana and North Dakota.

Illinois is one of the largest

producers of coal in the nation, and is among the largest consumers. And, unlike the two upper plains states, Illinois is closer to the other large coal-consuming states east of the Mississippi River.

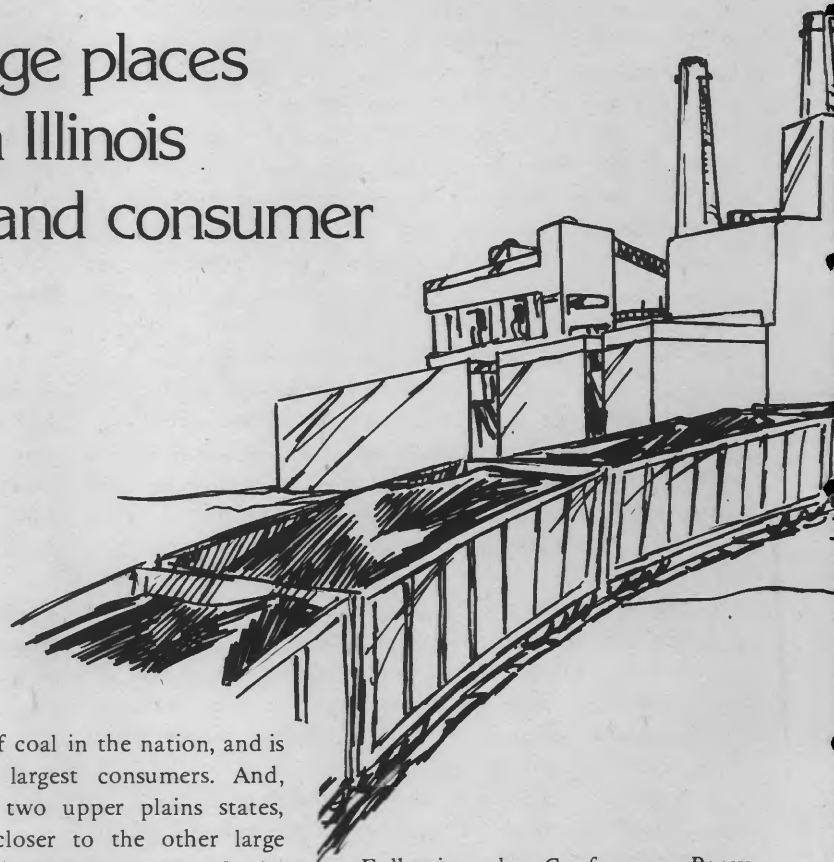
Because of its reserves and its role as a producer-consumer, Illinois has as important a role to play in the nation's energy development as any other state, and perhaps the most important.

In December, as the third in a series of energy conferences, Illinois Senator Charles H. Percy sponsored the Illinois Coal Conference in Carbondale on the campus of Southern Illinois University to highlight coal's potential to meet the future energy needs of the nation. And, more specifically, the Conference was designed to consider the future of Illinois coal production and use in economically sound and environmentally safe methods.

---

**“At the rate we import today, we could theoretically substitute Illinois coal for oil imports for the next 67 years.”**

---



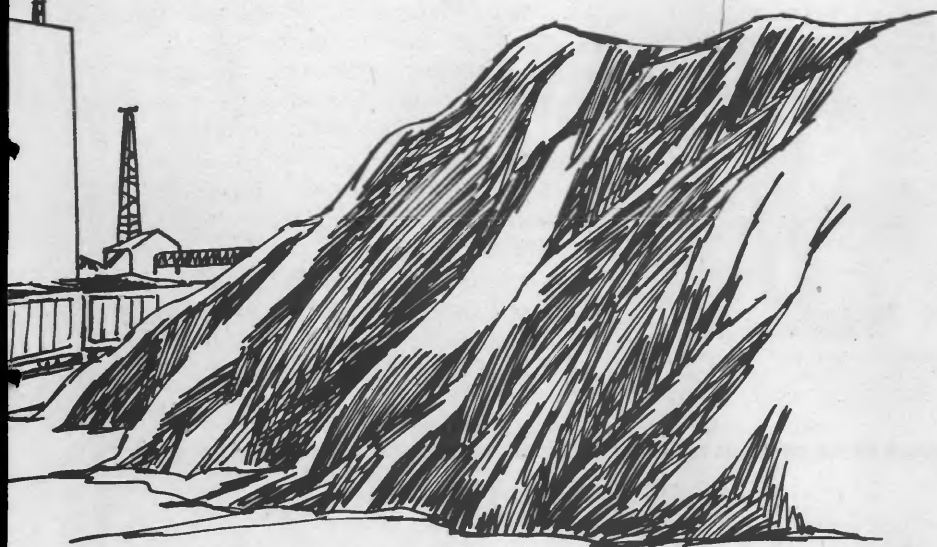
Following the Conference, Percy said, “I believe that the Coal Conference was very successful and of particular importance to Illinois coal development. The Conference addressed every aspect of coal policy and stimulated a number of interesting questions and opinions from the audience.

“Many people directly involved in Illinois coal production had the opportunity to come together to discuss the issues, learn from each other, and come away with a clearer understanding of what needs to be done to put Illinois in the forefront of coal development.”

Percy told those attending the Conference's opening session, “A decade ago, a conference on coal would have not been considered necessary. But a decade ago our energy supply was secure, abundant and cheap. Now the situation has changed dramatically.”

He said the country imports nearly nine million gallons of oil per day at a

# in coal's future



cost of \$45-billion a year. The volume is twice that of 1972, he added, and the cost is 10 times that of six years ago. The year 1972 was the last full year before the oil embargo of the Organization of Petroleum-Exporting Countries (OPEC).

Percy termed this "a prohibitive cost and a dangerous vulnerability."

---

**"I would estimate that Illinois coal production may remain about 10 percent of national production in 1985."**

---

The Senator pointed out that coal constitutes 90 percent of the nation's conventional energy resources, although it currently supplies only about 18 percent of the energy needs.

The importance of Illinois coal was emphasized when Percy said, "Illinois' vast coal reserves have the energy-producing potential of 240 billion barrels of oil. At the rate we import today, we could theoretically substitute Illinois coal for oil imports for the next 67 years."

He said President Carter's National Energy Plan places great importance

on increasing U. S. coal production, including doubling coal production in the next eight years, from approximately 640 million tons now to 1.2 billion tons a year in 1985.

"Whether we can meet this demanding goal or even come close is a matter of controversy," Percy said.

One of Illinois' leading authorities on coal, Jack A. Simon, Chief of the Illinois State Geological Survey, singled out a number of constraints which stand in the way of meeting the President's goals.

Simon cited a decline in bituminous mining in recent years after about 25 years of steady increases.

He said the Clean Air Act of 1970 and state regulations of 1972 have resulted in greater importation of low-sulfur western coal into Illinois, creating an adverse impact on expansion of mining in Illinois.

Simon said Illinois has a large number of nuclear power plants, which reduces the electric industry's coal requirements.

The high-sulfur content of Illinois coal, Simon went on, has been a major deterrent to expanded coal production because coal-fired plants have not generally had adequate technology available to permit greatly expanded

use of coal produced in Illinois.

He said greatly increased regulation by a variety of federal and state agencies has also been a constraint on Illinois coal development. Such regulation, Simon said, changes so frequently that long-range planning by the coal industry is hampered, sometimes to the extent that new mines may take up to six to 10 years to come into production, compared to three to five years in the past.

There are a number of lesser constraints, Simon added, and he described time as a constraint under any circumstances, especially when the target date of 1985 was considered.

---

**"Obviously, the electric utilities have made a strong commitment to coal, and the coal industry is responding."**

---

Simon went on to say that estimates on the nation's ability to increase coal by 1985 range from 40 percent up to and even beyond the goal of 100 percent.

"Some responsible industry spokesmen have indicated that the coal-mining industry could achieve the goal of doubling production by 1985, but I am confident that such optimism is based on at least reduction of a number of constraints previously mentioned," Simon added.

"As of now," Simon said, "I would estimate that Illinois coal production may remain about 10 percent of national production in 1985." He said a careful analysis of potential markets, competing sources of coal, announced mine developments and other factors has resulted in an estimated four-percent growth of Illinois coal production in the years between now and 1985.

"Early comprehensive commitment and programs to meeting energy goals  
*(continued on page 23)*

## TILLER USERS...

Can your machine do all of this?

- ★ Handle with just ONE HAND.
- ★ EVENLY break, turn & till soil.
- ★ Shred vegetation without tangling.
- ★ Leave NO WHEELMARKS or FOOTPRINTS.

The TROY-BILT® ROTO TILLER-POWER COM-POSTER can do all this and more!



That's why serious gardeners consider it the finest tiller available. See for yourself! For complete details, OFF-SEASON SAVINGS, and FREE 24-page booklet clip this and mail today to:

TROY-BILT® Tillers, Dept. 80261  
102nd St. & Ninth Ave., Troy, N.Y. 12180

# STARK BRO'S free catalog

nearly 400 varieties



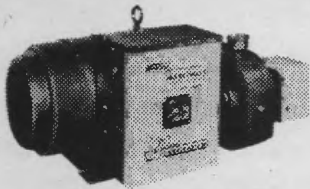
Stark Bro's Nurseries and Orchards Co.,  
Box A10318, Louisiana, Mo. 63353

Choose from the world's finest selection of fruit trees. Grow your own fresh apples, peaches, pears, cherries, and nectarines for favorite desserts, canning, or eating right off the trees. Also have full-size, full-of-flavor fruit on trees that reach only 8- to 10-foot tall with Stark Bro's amazing dwarf-size trees.

Every variety tested and proven. Choose from fruit trees, shade and nut trees, vegetable seeds, shrubs, berries, award-winning roses, and ornamentals.

Fold here. Glue or tape all sides and mail today. No stamp needed.

## MORE POWER TO YOU



PROTECT YOUR FARM with

# WINCO

STANDBY  
EMERGENCY  
POWER



Portable electric power anywhere on your farm!

## PTO TRACTOR GENERATOR

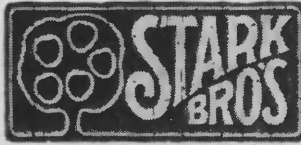
15KW TO 55KW

Powerline failures are increasing in frequency. That's why you need WINCO Emergency Standby Power for lights, heat, milkers, water, bunk feeders, coolers, and other electric tools. WINCO gives greater motor starting capacity per KW — that's why Winco is rural America's most popular tractor Generator.

Get this vital farm protection at:

Tom Bauer  
R. R. 2, Box 97  
Gillespie, Illinois 62033  
Ph. (618) 362-6441

## No stamp needed. Send for free catalog today.



Stark Trees Bear Fruit. Since 1816.

Free catalog gives full information you need to select the varieties you want. Also, free growing guide with every order helps you get professional results, even if you've never grown anything before.

(Please Print)

A10318

Mr.  
Mrs.  
Miss

Address \_\_\_\_\_

City \_\_\_\_\_

State \_\_\_\_\_

Zip \_\_\_\_\_

Fold here. Glue or tape all sides and mail today. No stamp needed.

FIRST CLASS  
Permit No. 1  
Sec. 34.9 P.L. & R.  
Louisiana, Mo.

### BUSINESS REPLY MAIL

No Postage Stamp Necessary  
If Mailed In The United States

Postage Will Be Paid By

Stark Bro's Nurseries  
Box A10318  
Louisiana, Missouri 63353



# ...IS NOT FOR EVERYONE.

**We don't accept everyone...just almost everyone.** For those accepted, **C.I.F. costs up to 50% less...** and pays much more. If you're in fairly good health (and MOST people are)... **C.I.F. is for you.**

**THE FIRST ... THE OLDEST CO-OP PLAN...** with the **MOST SATISFIED CUSTOMERS...** Developed to use the buying power of millions of Cooperative Members... to provide more dependable protection at low **GROUP** cost. **THOUSANDS UPON THOUSANDS** of Rural Cooperative People **COAST TO COAST** now rely upon the **Co-op Insurance Fund** for their hospital protection. **DEPENDABLE AND HONESTLY DESCRIBED...** The "CO-OP INSURANCE FUND" (**C.I.F.**) Hospital Protection provides High Benefits, fair and prompt claims service. Especially developed for cooperative members... the same plan provided to cooperative employees.

**"CO-OP" YOUR HOSPITAL BILLS**  
**WE PAY UP TO ...**  
**\$1,500.00 MONTHLY**  
**\$50.00 DAILY**  
**PLUS \$5000.00 IN CASE OF ACCIDENTAL DEATH**

## C.I.F. HAS HOSPITAL INSURANCE YOU CAN AFFORD...

When a Hospital Emergency strikes, you will be sure...

1. Your claims money will be paid on all covered hospitalization.
2. Your service will be prompt.
3. Your problems will be handled with understanding.

**ACCORDING TO RECENT NEWSPAPER REPORTS... BEFORE THE YEAR IS OVER THE AVERAGE HOSPITAL BILL WILL BE MORE THAN ONE THOUSAND DOLLARS (\$1,000.00)...**

In the past eight years, the cost of hospital rooms has gone up by **129%** - according to **The American Hospital Association.**

**C.I.F. Has NOT Raised It's Rates In The Past Eight Years.**

Our Insurance Company, "**Guarantee Trust Life Insurance Company,**" is a reliable old company that has been serving the needs of Rural Americans for almost a Half Century. Licensed in this State.

## C.I.F. PROVIDES YOU WITH HOSPITALIZATION PROTECTION FOR ANY COVERED ILLNESS... ACCIDENT... OPERATION.

- ▶ PAYS REGARDLESS OF OTHER INSURANCE.
- ▶ PAYS REGARDLESS OF MEDICARE.
- ▶ PAYS REGARDLESS OF AGE.
- ▶ PAYS REGARDLESS OF WORKMEN'S COMPENSATION.
- ▶ PAYS REGARDLESS OF VETERANS HOSPITALIZATION.

**...WE PAY THE SAME HIGH CASH BENEFITS FOR ALL COVERED ILLNESSES AND ACCIDENTS.**

*Recognized by Millions*

**OUR GUARANTEE IS YOUR SECURITY**  
**CO-OP INSURANCE FUND**  
**IS KNOWN FOR FAIR AND PROMPT CLAIMS HANDLING!**

Prompt and considerate claims handling is our trademark - wherever you live (or move) anywhere in the world. We are as close to you as a postage stamp or a phone call **CO-OP INSURANCE FUND** is administered coast-to-coast from the

**SERVICE CENTER**  
ATLANTA, GEORGIA

No Obligation / No Risk

No Agent Will Contact You!

TO GET THE WHOLE STORY - Fill in information and mail to:

**CO-OP INSURANCE FUND**  
P.O. Box 3787, Springfield, Ill. 62708

**FIRST ENROLLMENT THIS YEAR**

Please Print Name \_\_\_\_\_  
Street Address (or RFD) \_\_\_\_\_  
City/Town \_\_\_\_\_ State \_\_\_\_\_ Zip \_\_\_\_\_  
List ages of those you want information for:  Male Age \_\_\_\_\_  Female Age \_\_\_\_\_  Children Ages \_\_\_\_\_ IL-1

# Band director helps youngsters set sights on Florida trip

**I**t may be winter in Illinois—complete with snow, wind and freezing temperatures—but about 100 Clay County high school young people are thinking of warm, sunny Florida.

In fact, they have been thinking about it for the last few years and this summer, if all the pieces fall into place, the youngsters—members of the Flora High School Band—will roll out of Flora early the morning of June 5 for an eight-day trip that will include two marching band performances at Disney World.

The trip—which will include visits to Stone Mountain, Georgia, and such Florida attractions as Sea World, Cypress Gardens, Circus World, Silver Springs and an Atlantic coast beach area—is the idea of Harry Penry, Flora High School Band and Chorus Director and music teacher.

Penry, who has been directing the music program at Flora High School since 1969, said he talked with the young people in his band about three

years ago and asked if they wanted to work toward such a goal. “We hadn’t been invited to march at Disney World when I went to the school board and told them of the kids’ interest and the work involved to bring something like this about,” Penry explained. “They approved of such a project, every four years so each high school student would have a chance at participating.”

“Although we hadn’t even been invited, the students’ interest brought this thing about. I talked to travel agencies and to Disney World. The people of Disney World told me to send in an audition tape. I submitted it, they listened and invited us. It really made me happy,” Penry said.

“We are going to do some sort of performance at Silver Springs, too,” he added.

Such a trip doesn’t come without effort.

Penry said the students have been working hard to collect the necessary \$185-per-student cost of the transportation and lodgings. Meals will be



in addition to that expense.

The band members have conducted a number of fund-raising projects to help meet the trip expenses.

“We sold cannisters of popcorn last year, and plastic water pitchers and glasses, too. Of course, we have our own popcorn machine and sell popcorn at ball games. This year we sold fruitcakes, and did really well with this item. We had some bake sales, but they proved to be poor producers, especially for the amount of time spent by the people who made things and the time the kids work selling,” Penry said.

In addition to the fund-raising efforts of the band members, the Flora





*At left: Harry Penry makes a last-minute check with members of the Flora High School band prior to a marching performance. Below: Penry, his wife, Linda, and children Gena and Michael show off the 1930 Model A Ford Penry has restored in his spare time.*



Women's Club, Lions Club and Kiwanis Club have made donations to the trip fund.

Penry has developed a method of keeping up with band members' work. Each has an account that is credited for the amount earned on a particular project. If five students work a bake sale which nets \$10, each gets a \$2 credit to his account.

For some students, a portion of the money will have to come out of their own pockets.

Some band members who cannot participate in the fund-raising activities will pay for the entire trip from their own funds.

Since Penry has been at Flora, his

bands have taken a few overnight trips for concerts in neighboring communities.

Growth has been steady for the Flora band since Penry's arrival. He estimates that about 70-75 members made up the band when he took over. Now the number is more than 125, the number of new uniforms the band got this past fall.

Penry, a Carbondale native and Clay Electric Co-operative member, is a 1965 graduate of Southern Illinois University. He has a master's from Illinois State University.

After graduation from SIU, his first job took him north to the Melvin-Sibley Consolidated School in Ford County. There he was the instrumental music director for students in the fourth grade through high school. At Melvin-Sibley, he concentrated on building a feeder system which eventually would produce a strong high school band.

"I loved working with the small children and building the feeder

system," he said, "but I wanted to go into a larger high school where I could get involved in the more advanced training."

At Flora, in addition to his band directing, Penry directs the school's choral program, and teaches music classes during the day.

The Flora band has built strong community support on the basis of its progress and accomplishments. It recently attained a first rating in the state concert band competition and has presented a halftime show for an SIU football crowd. The biggest honor, however, was only half fulfilled. The band was invited to march in the Governor's Inauguration parade last January in Springfield. Unfortunately, cold weather and snow prevented the appearance.

While the band was building a strong foundation, Penry was earning admiration and respect, too.

On a cool fall day while the band is drilling for an upcoming halftime

*(continued on page 13)*

# Lines With People In Mind...

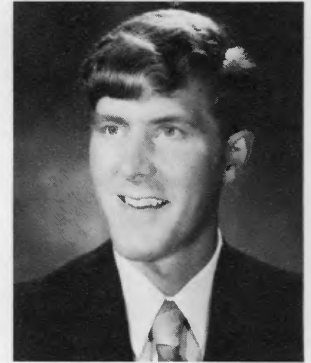
## Steele heads FB again



Harold B. Steele

Harold B. Steele, Princeton, has been reelected president of the Illinois Farm Bureau. Steele has headed the organization since 1970. The election took place during the Illinois Farm Bureau's annual meeting December 3 in St. Louis. Reelected vice president was John White Jr., Elburn, Kane County. Reelected directors are Jack Young, Spring Grove, McHenry County; Morris E. Nelson, Altona, Henry County; Leonard W. Schultz, Glenview, Cook County; Elmer King Jr., Pekin, Tazewell County; Lowell Knox, Loraine, Adams County; Arthur W. Gebhart, Stonington, Christian County; Tom Donnell, Mattoon, Coles County; Wilbert Engelke, Granite City, Madison County, and Carleton Apple, Enfield, White County.

## Dohner assistant at Bradley



Mark A. Dohner

Mark A. Dohner of rural Ipava has been selected assistant basketball coach at Bradley University in Peoria. Dohner played basketball at Bradley from 1972 to 1975 and is the son of Robert Dohner, a former Spoon River Electric Cooperative director.

## Nordstrum new IVEC director



Wilbur C. Nordstrum

Wilbur C. Nordstrum is the newest director of Illinois Valley Electric Cooperative, Princeton. Nordstrum, who is married and the father of two children, is chief mechanic and truck driver for a grain company near Buda. Nordstrum also manages the family farm near Buda.



C. Lee Duncan



Donald Sill Sr.

## Duncan and Sill new Spoon River directors

C. Lee Duncan and Donald Sill Sr., both of rural Lewistown, are new directors of Spoon River Electric Cooperative, Canton. They were elected during the annual members' meeting. Duncan, 39, a machine shop operator, is married and the father of five children. Sill, a grain and livestock farmer, is married and the father of three children. He is 52.

## McCamey is renamed park commissioner



William H. McCamey

William H. McCamey, manager of Spoon River Electric Cooperative, Canton, was recently named to his third six-year term as a commissioner of the Canton Park District. McCamey currently serves as president of the District.

Inter-State Nurseries  
delivers Hamburg, Iowa 51640

# Seven Giant Ruffled Glads 25¢

Postpaid & Guaranteed  
Double your money back if not completely satisfied.  
New and superior varieties...if bought by name they would cost 75¢.  
Colors range from white to purple, pink, rose, yellow, lavender, orange.  
This year we added Red Beauty, one of the brightest glads known. Big bulbs, 1 to 1 1/4 inches across. Glads will bloom for you this summer.

**Free Spring Catalog**

**INTER-STATE NURSERIES**  
3018 E. Street Hamburg, Iowa 51640  
 FREE Spring Catalog  7 Glads 25¢

NAME \_\_\_\_\_  
ADDRESS \_\_\_\_\_  
CITY \_\_\_\_\_ STATE \_\_\_\_\_ ZIP \_\_\_\_\_

Glads will be shipped at proper planting time

**"I'm fun to make!"**



**Crafts 'n Things shows you how!**

If you enjoy making beautiful things like this calico cat (or would like to try your hand at it), then you'll enjoy Crafts 'n Things.

40 complete projects in each colorful issue... macrame, tole, crocheting, wood art, needlepoint; plus unusual crafts like Rya rugs, china painting, calligraphy, stained glass, copperwork.

Step-by-step illustrated directions make creating easy for you. Actual-size patterns included.

"I think it's the best craft magazine published and I take quite a few." -M.B., Sublette, Ill.

**FREE Book** for subscribing now to Crafts 'n Things. If you're not delighted, your money will be refunded.



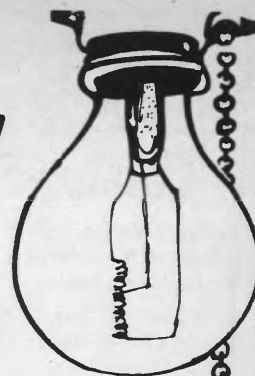
Crafts 'n Things, Dept. 3013, Park Ridge, IL 60068  
Please enter my subscription to Crafts 'n Things and send my FREE book.

\$5 for 1 Year (6 big issues)  \$9 for 2 Years (SAVE \$1.00)

Payment enclosed (we'll add 1 issue FREE)  Bill me

Name \_\_\_\_\_  
Address \_\_\_\_\_  
City, State, Zip \_\_\_\_\_

# TURN ON to a BRIGHTER FUTURE!



With two insurance programs available to you as an Illinois Rural Electric Cooperative subscriber. Protection that can help "brighten" your future.

## \*Disability Income Protection

Protection that can help make up for lost income should a covered sickness or accident keep you from working.

## \*Hospital Coverage

Essential coverage that can help protect you against rising health care costs. Benefits for covered hospital room and board expenses, surgeon fees... and much, much more.

For more information, simply complete and mail the coupon below or contact your nearest local representative. Mutual of Omaha, the underwriter of the programs, will provide personal service in helping to select the plan that's best for you. And... turn you on to a brighter future.

L. Earl Cutler  
7600 West Main Street  
P.O. Box 965  
Belleville, Illinois 62223  
Phone: (618) 398-1950

Lee Weckerly  
510 N. Church Street  
Rockford, IL 61105  
Phone: (815) 964-3379

S. B. Stottrop  
111 East Decatur  
Decatur, Illinois 62525  
Phone: (217) 429-5495

Jack Williams Div. Office  
285 South Plazaway  
Cape Girardeau, MO 63701  
Phone: (314) 334-2841

N. J. Fischer, CLU  
330 Duck Creek Plaza  
Bettendorf, Iowa 52722  
Phone: (319) 359-9128

Thomas M. Kirkpatrick  
309 Bondi Bldg.  
Galesburg, IL 61401  
Phone: (309) 342-6159

A. H. Harris  
1119 South Sixth Street  
Springfield, Illinois 62708  
Phone: (217) 528-3434

UNDERWRITTEN BY  
**Mutual of Omaha**  
Life Insurance Affiliate:  
**United of Omaha**  
MUTUAL OF OMAHA INSURANCE COMPANY  
HOME OFFICE: OMAHA, NEBRASKA



**Association Members Insurance Division**  
**Mutual of Omaha**  
54 E. St. Charles Rd.  
Villa Park, Illinois 60181

Please send me information about the following program(s) available to me as an Illinois Rural Electric subscriber:

Disability Income Protection  Hospital Coverage

Name \_\_\_\_\_

Address \_\_\_\_\_

City \_\_\_\_\_ State \_\_\_\_\_ ZIP \_\_\_\_\_

ILLINOIS  
LICA

The Symbol of

**EXCELLENCE**  
in Soil, Water and  
Natural Resource  
Conservation Work.

Look for the LICA Decal



## MONEY FOR NEEDED MUNICIPAL IMPROVEMENTS

Such as Bridges, Buildings, Machinery and others — may be acquired from low interest MUNICIPAL BONDS.

## INFORMATION & ASSISTANCE

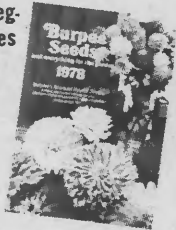
may be acquired by  
writing or calling  
**GILBERT O'LEARY**

SPRINGFIELD A/C 217-544-1746 BARRY A/C 217-335-2842  
P.O. Box 4504, Springfield, Ill. 62708 P.O. Box 118, Barry, Ill. 62312

# Burpee's new 1978 Garden Catalog-FREE

Featuring new exciting vegetable and flower varieties for the home gardener.

The new 184-page Burpee Catalog is a comprehensive planting and growing guide with over 1800 vegetables, flowers, fruits, shrubs and trees. Plus helpful hints from Burpee's horticulture experts on how to have a more productive garden. Send for your free copy today.



If you ordered from Burpee last year, you will automatically receive your free Burpee Catalog in 1978.

© Burpee Seed Co. 1977

## BURPEE SEED CO.

1728 Burpee Bldg., Warminster, PA 18974;  
or Clinton, IA 52732; or Riverside, CA 92502  
(Please mail to nearest address.)

YES. PLEASE SEND ME THE 1978 BURPEE GARDEN CATALOG FREE.

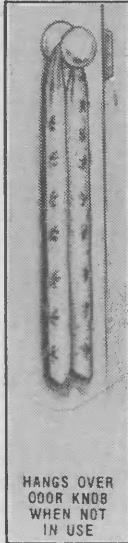
Name \_\_\_\_\_ (Please print)

Address \_\_\_\_\_

City \_\_\_\_\_

State \_\_\_\_\_ Zip \_\_\_\_\_

# STOP ICY DRAFTS ALL WINTER...



HANGS OVER  
DOOR KNOBS  
WHEN NOT  
IN USE



Only  
**\$2.98**

Leave it to those winter-battered New Englanders to come up with such a beautifully simple way to save on fuel bills! Now you can stop drafts cold at any problem window or door... instantly!

Cape Cod Draft Stopper is filled with sand to mold for snug fit at any drafty crack, holds securely wherever you put it. Adjusts to fit any crack from 18" to 40" long. Has added thermal insulation and is attractively covered with sturdy fabric. Hangs over doorknob when not in use.

Stay snug and warm all winter long and save on fuel bills over and over — save even more when you take advantage of the quantity discount. If not delighted, return within 14 days and your money will be refunded in full (except postage and handling). MAIL COUPON TODAY!

© 1977 American Consumer Inc., Caroline Rd., Phila PA 19176

### MAIL NO-RISK COUPON TODAY

AMERICAN CONSUMER, Dept. DRS-25, Caroline Road, Philadelphia, PA 19176

Yes! Please send me \_\_\_\_\_ (DRS) Cape Cod DRAFT STOPPER(S) at \$2.98 each plus 75¢ per unit for postage & handling

**SAVE!** Order 2 Draft Stoppers for only \$4.98 plus \$1.25 postage & handling

If after receiving my order I'm not delighted, I may return it within 14 days for refund (except postage & handling)

Amount enclosed \_\_\_\_\_ PA residents add 6% sales tax. Check or money order, no CODs please.

8140-014

CHARGE IT: (check one) Exp. Date \_\_\_\_\_  
BankAmericard/Visa \_\_\_\_\_ American Express \_\_\_\_\_  
Master Charge/Bank Number \_\_\_\_\_

Credit Card = \_\_\_\_\_

Name \_\_\_\_\_

Address \_\_\_\_\_ Apt. = \_\_\_\_\_

City \_\_\_\_\_ State \_\_\_\_\_ Zip \_\_\_\_\_

Canadian customers, please send orders to:  
Mail Store Ltd., Dept. DRS, 312 Rexdale Blvd., Toronto, Ontario M9W1R6  
(Ontario & Quebec residents add sales tax)

# STRIP OFF PAINT RUST, STAIN with no chemicals, sweat or torches

## NEW IMPROVED Roto Stripper



HUNDREDS  
OF USES

Turns any 1/4" or larger drill into a high-speed miracle power unit that strips away layers of paint, stain or rust like magic.

SIDING  
CHAIRS  
TABLES  
DOORS  
TRIM

30 flexible carbon alloy steel fingers produce up to 75,000 stripping strokes a minute. You'll never buy costly paint removers or dangerous flammable caustic chemicals again. U.S. patented ROTO STRIPPER is guaranteed to work faster, cheaper, safer on wood, metal, masonry—any contour! Puts a satin finish on fine furniture when used as directed. No sanding needed. Won't raise wood grain as liquids do. Great for window trim—sensitive whisking action won't break glass. Instructions included.

BOATS  
AUTOS  
IRON  
MASONRY

FREE 10 piece high-test drill bit set plus 196-page bargain price tool catalog—both FREE with your ROTO STRIPPER order.

Only  
**\$12.95**  
LIFETIME  
WARRANTY

Seen  
on  
TV

U.S. General Supply Corp., Dept. SD-91  
100 General Place, Jericho, N.Y. 11753

Please rush \_\_\_\_\_ ROTO STRIPPERS  
@ \$12.95 ea. 2 for \$23.95. Sorry,  
no COD's. Add \$1 handling for each.  
Also send free drill bits and catalog.

Order:  
 COARSE for big jobs

FINE for furniture

I enclose \$ \_\_\_\_\_ Charge  BankAmericard

Master Charge

Card No. \_\_\_\_\_ Exp. Date \_\_\_\_\_

Name \_\_\_\_\_

Address \_\_\_\_\_ State \_\_\_\_\_

City \_\_\_\_\_ Zip \_\_\_\_\_

**30 DAY MONEY BACK GUARANTEE**

# Buy Tools DIRECT at Rock-Bottom Prices!

Rockwell

WEN

Milwaukee

SKIL

RIDGID

KENNEDY

PROTO

Name brand  
Tools & Hardware  
at Low Industrial Prices!

Insider's  
Confidential  
Price List  
Included

Black & Decker  
2-speed jig saw

B&D

STANLEY

DREMEL

SKIL

Rockwell

S&K

LUFKIN

Millers  
Falls

Join thousands of Americans—and buy direct from U.S. General's catalog. Enjoy "Insider's Confidential" prices on hand tools, power tools, automotive tools, motors, handyman supplies—6,000 nationally advertised name brand items at rock bottom prices. Save on all the famous names you know and trust—Stanley, Wiss, Disston, Skil, Kennedy, Lufkin, Rockwell, Black & Decker, plus many, many more.

Thousands of serious minded craftsmen, mechanics, homeowners and hobbyists each send us \$1.00 just to get this big 196-page catalog of fantastic buys on brand name tools, hardware, and accessories.

Our bargains are so great, we ask \$1 simply to discourage curiosity seekers.

But really, the catalog is free. Because you get a \$1 Cash Certificate to spend just like money! (Or, if you're not 100% satisfied with the catalog, send the Certificate back to us and we'll refund your dollar.)

As an "extra", you'll also receive with your first order a 10-piece High Test Steel Drill Bit Set (worth about \$3.00) absolutely FREE.

### Who buys from U.S. General?

Thousands of individuals and companies. Here's a partial list of firms from our last 6 to 9 months customer list:

• Bell Telephone • General Electric • ITT

• Goodyear • IBM • RCA • I. E. DuPont • NCR

Same low prices for you—no minimum order required!

## 6,000 NAME BRAND ITEMS

U.S. General Supply Corporation  
100 General Place Dept. A-59  
Jericho, New York 11753

I enclose \$1. Please send your new 196-page fully illustrated Confidential Tool & Hardware Catalog. Also include a Certificate worth \$1 on my first purchase. If I am not 100% satisfied, my \$1 will be refunded.

(Print)  
Name \_\_\_\_\_

Address \_\_\_\_\_

City \_\_\_\_\_ State \_\_\_\_\_ Zip \_\_\_\_\_

© COPYRIGHT 1977 U.S. GENERAL SUPPLY CORP.

# Florida trip

(continued from page 9)

show, Penry's intensity gives off a stern light. He demands the best, and the band members know and appreciate that quality.

Penry barks blunt instructions to a wandering marcher, and another can be heard remarking, "He's in a good mood today." Later, while preparing for the school's homecoming parade, Penry is busy with late-minute details. With a smile and after Penry leaves the room, a uniformed band member says, "He's kind of picky today."

Highest compliments may be those from fellow teachers. "He does a great job. He has a certain power over the kids," a teacher says.

Penry, whose pride in the Flora band and choral program is evident, has developed an innovative concept designed to help prospective music teachers.

It is an apprenticeship program designed, as Penry says, to prepare the students for what is involved when they become teachers.

"I developed it because I saw a need to familiarize them with what they will do as teachers. It isn't a student teaching program, Penry quickly points out, but rather a course of training aimed at the basics.

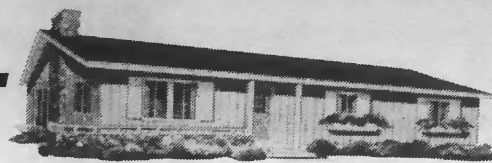
In addition to the school activities, Penry's time is also consumed by his work with a community choir, a group of barbershop singers and a church choir.

There is an educational slant to the community and barbershop singers, too.

Both are Illinois Eastern Community College Continuing Education programs offering two hours of credit.

The 30-35-voice community choir, begun in 1976 as part of the city's bicentennial program, recently joined with the high school choir and performed its second Christmas cantata.

The barbershop group began as a class and needs only a few more singers to affiliate with the Society for the Preservation and Encouragement of Barber Shop Quartet Singing in America.



## This is the House that Jack Built - The Miles Way

Because he couldn't afford a ready-built one!

Jack wanted that home on the hill... with a yard for the kids... a garden... a sewing room for mom. But Jack didn't have the ready cash for a big downpayment. So, he waited... and waited.

Then Jack heard about Miles Homes... the folks who trust ambitious do-it-yourselfers. The folks who say "Your willingness to do the building is more important than a big down payment or a fully paid-for lot."

Miles sent the blueprints, pre-cut materials, step-by-step instructions and assistance in getting some foundation materials Jack needed. Miles kept the monthly payments low while Jack built.

This is the house Jack built... The Miles Way. It can be your way to begin a new life.

Send coupon for full details, today!

There's a representative near you. Phone: (618) 994-2836 (815) 268-7706

**Miles Homes**

The Do-It-Yourselfer's Friend



Send me your FREE Great Homes Idea Book  
MILES HOMES, Dept. 1L-31  
4500 Lyndale Ave. N., Minneapolis, Minn. 55412

Name \_\_\_\_\_

Address \_\_\_\_\_

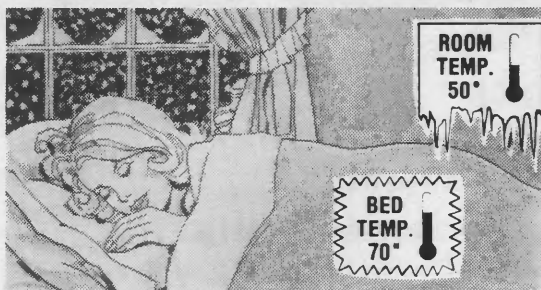
City \_\_\_\_\_ State \_\_\_\_\_ Zip \_\_\_\_\_

Phone ( ) \_\_\_\_\_

I plan to do  all  part  none of the work.

### SPACE-AGE HEET SHEET

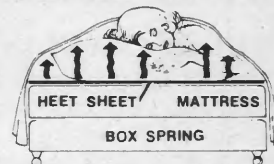
# KEEPS YOU WARM WITHOUT ELECTRICITY



- NO WIRES!
- NO OPERATING COSTS!

only \$8<sup>98</sup> (Twin-Size)

YOUR OWN REFLECTED BODY HEAT KEEPS YOU COZY!



A space-age "miracle!" Made of ThermoFab... the super-effective insulating material developed to protect astronauts in the incredible cold of outer space! You sleep on it — not under it. Just place the incredible HEET SHEET between your mattress and bottom sheet. INSTANTLY, it retains and reflects your own body heat right back to you... keeps you cozy and warm as an electric blanket without a single watt of electricity! And you stay warm all night with your thermostat turned down; you can save plenty on heating bills. Let's you use lighter-weight blankets too — so you awake relaxed and refreshed. SPACE-AGE HEET SHEET is 100% safe, lightweight and

portable. Never gets dirty... the special heat-reflecting fabric is stain resistant too, so it even doubles as a mattress pad.

Order one for every bed in your house (special savings on extras). If not delighted, return within 14 days for refund (except postage & handling). MAIL COUPON TODAY!

© 1977 American Consumer Inc., Caroline Rd., Phila., PA 19176

AMERICAN CONSUMER, Dept. HSH-14  
Caroline Road, Philadelphia, PA 19176

Yes! Please send me the SPACE AGE HEET SHEET(S) ordered below:

— (#009) TWIN-SIZE only \$8.98 each (2 for \$16.98)

— (#017) DOUBLE-SIZE only \$9.98 each (2 for \$18.98)

— (#025) KING-SIZE only \$11.98 each (2 for \$22.98)

Please add \$1 postage & handling for one Sheet. \$1.50 for two, \$3 for four.

If after receiving my order I'm not delighted, I may return it within 14 days for refund (except postage & handling).

8558

MAIL NO-RISK COUPON TODAY

Amount enclosed \$ \_\_\_\_\_ PA residents add 6% sales tax. Check or money order, no CODs please.

CHARGE IT: (check one) Exp. Date \_\_\_\_\_

BankAmericard/Visa  American Express

Master Charge Bank Number \_\_\_\_\_

Credit Card # \_\_\_\_\_

Name \_\_\_\_\_

Address \_\_\_\_\_ Apt. # \_\_\_\_\_

City \_\_\_\_\_ State \_\_\_\_\_ Zip \_\_\_\_\_

Canadian Customers please send orders to: Mail Store Ltd.  
Dept. HSH, 312 Rexdale Blvd. Toronto, Ontario M9W1R6  
(Ontario & Quebec residents add sales tax)

**FANTASTIC PRICE BREAK!**

# 40-CHANNEL CB RECEIVER

*Now Only*

# 9<sup>95</sup>

HUNDREDS OF  
THOUSANDS  
SOLD AT \$16.98

**You Save \$7<sup>00</sup>**



**GIVES YOU  
ALL THE LATEST INFO ON:**

- Traffic Tie-Ups • Highway Conditions
- Detours & Accidents

## **DRIVERS! CYCLISTS! SPORTSMEN! HIKERS!**

Compact as a pocket radio, The 40-Channel CB Receiver monitors all on-the-air CB channels... automatically scans, picks up, and "locks-in" on the strongest CB signal around. Now, no matter where you are—in the thick of turnpike traffic or in the thick of the woods—you can receive the latest traffic conditions or hunting reports, dangerous road conditions or weather alerts.

Yes, thousands paid \$16.98 for this very same unit, but because of a spectacular purchase it can be yours at this fabulous \$7.00 savings! The CB Receiver is completely portable... clip it to your car's visor for the latest road conditions, hook it onto your bicycle or backpack to keep in touch with what's happening nearby. Receives loud and clear indoors too! There are no settings to monkey with and you're protected by the manufacturer's warranty. Runs on an inexpensive 9-volt battery that's available anywhere.

Take advantage of this fantastic price break now and receive the official truckers' "10-Code." If you're not amazed by The 40-Channel CB Receiver, return it within 14 days for a complete refund (less postage & handling, of course). Get 2—one for the car, one for the hiker—and save even more! Order now.

© 1978 Encore House, Inc., Roberts La., Glen Head, NY 11545

- CONFORMS TO ALL 1978 F.C.C. REGULATIONS
- NO LICENSE REQUIRED
- AUTOMATIC SCANNER "LOCKS-ON" TO STRONGEST SIGNAL
- ANTENNA INCLUDED
- COMPLETELY PORTABLE

**MAIL THIS NO-RISK COUPON TODAY!**

**ENCORE HOUSE, Dept. CBS-2**  
Roberts Lane, Glen Head, NY 11545

YES! I want to get in on your fantastic price break. Send me the 40-Channel CB Receiver(s) checked below and include the truckers' "10-Code" with each set.

- 1 CB Receiver for only \$9.95 plus \$1 postage & handling
- SAVE MORE!** 2 CB Receivers only \$18.95 plus \$2 postage & handling

I understand that if I'm not fully satisfied with my order, I may return it within 14 days for a complete refund of my purchase price (less postage & handling, of course).

Amount enclosed \$\_\_\_\_\_ (NY residents please add sales tax.) No C.O.D.s please.

**CHARGE IT!**  VISA (BankAmericard)

Master Charge  
bank # \_\_\_\_\_

Credit Card # \_\_\_\_\_ Exp. Date: \_\_\_/\_\_\_

Name \_\_\_\_\_

Address \_\_\_\_\_ Apt. # \_\_\_\_\_

City \_\_\_\_\_ State \_\_\_\_\_ Zip \_\_\_\_\_

*Dave Curry demonstrates the fireplace shade. Curry and a friend teamed to develop the device, designed to seal off a fireplace and prevent the possibility of sparks causing a fire and keep heat from escaping up the chimney when the fireplace is not in use.*

## Unique shade designed to save energy



**A** Corn Belt Electric Cooperative member and a friend have developed a unique energy-saving device designed to cut back on fireplace heat loss. It is the fireplace shade, a product much like a window shade, except that it is engineered to tolerate temperatures up to 700 degrees fahrenheit, the two inventors say.

The fireplace shade is the work of Corn Belt member Dave Curry of Bloomington and Duane Kunz of Morton. Kunz had the idea and Curry—who is president of the Fireplace and Patio Center, a firm which markets fireplace and patio products in several central Illinois cities—had the marketing know-how.

Using the same principle as a window shade, it provides a barrier between the smoldering fire and the room, thereby eliminating the hazard of shooting sparks and reducing heat

loss at night, Curry points out. The fireplace shade installs invisibly in most fireplaces and is less expensive than glass doors.

With Kunz providing the engineering and Curry the marketing knowledge, the two established Flame-Tech Inc. to arrange for manufacturing and marketing. Soon they had lined up distributors in 30 states and in Canada.

“How many times have you enjoyed a fire in the evening, only to retire before the fire is completely out?” Curry asks. “You’re faced with having to either put the fire out, or simply put the screen over the front and go to bed. That allows the fireplace to exhaust much of the heated room air to the outside during the night,” he says.

“With the fireplace shade, you can simply draw it down before retiring; the fire dies out, and heat loss from

the room is effectively eliminated.”

“It received a great response at the Chicago Hardware Show this past fall,” Curry adds.

Curry says that November was the first full production month with output of 7,000 shades per week. “We think its the hoola hoop of fireplace products.”

Retailing for under \$60, depending upon fireplace size, the shade is available through many fireplace product dealers throughout Illinois.

Sales “boomed” too soon, Curry says. Television commercial spots were given to stations during October for viewing in November. Curry said he was watching the baseball world series one day in October, when a commercial for his fireplace shade appeared. Calls and orders came in before they could fill them. “We really got caught off guard,” he says, “but we’ve recovered pretty well now.”



## ***Snowmobiling safety***

**O**ne of the fastest-growing winter recreations is snowmobiling.

The number of adventurous, hardy people who brave winter weather elements for the thrill of skimming across snow-covered countryside grows daily in Illinois, especially in the northern portions of the state.

While the sport offers excitement and superb winter scenery, snowmobilers should be aware of hazards and the common-sense rules of snowmobiling.

The Cooperative Extension Service of Montana State University, with assistance from the U.S. Forest Service and organized snowmobiling associations, compiled a series of tips, rules and suggestions that will help snowmobilers have a safe time while avoiding activities which may damage property or privacy of theirs.

For safety's sake:

Remember to notify someone of your trip, your planned route of travel and your estimated time of return. Then, stick to your original schedule.

When someone is overdue, keep calm and contact the sheriff or other law officers, snowmobile clubs or centers, or, if you are on National Forest land, the Forest Service.

When lost, stalled or stranded, don't panic, but decide for a plan of action, stay together, conserve your energy and try to stay dry and warm.

Take along no one who would be unable to "make it back" in case of mechanical breakdown. Remember, human efficiency declines in cold weather.

Don't go alone. Travel in groups of at least three people and with at least two snowmobiles.

Drive cautiously and defensively. The National Safety Council reports that over one-half of the serious snowmobiling accidents involve collisions with automobiles, other snowmobiles, trains and fixed objects, such as trees, guy wires and fences.

Don't travel in a storm. Turn back if the weather turns bad. If visibility is reduced or the area is unfamiliar, follow your tracks back out.

Take safe routes. Avoid thin ice or unsafe river crossings. Avoid avalanche-type terrain.

Have good equipment. Carry an emergency repair kit. Know how to make repairs. Have enough gasoline, with some to spare. Carry snowshoes, or skis, and a survival kit.

In addition to the safety precautions, it is important to maintain a respect for the property and privacy of others by following these guidelines:

Fences are expensive to repair; take care not to destroy them. Use gates when traveling over fenced land. Obtain the owner's permission to travel on his land.

Buildings should never be entered. Notify proper





## Know distress signals

Snowmobilers should learn the nationally accepted distress signals that are to be made in snow or on the ground for aircraft searchers. In addition, three intermittent signals by noise, light, whistle, smoke or other visible or audible means is a universally recognized distress signal. To alert aircraft searchers, use the following:

- I** require physician
- II** require medical supplies
- X** unable to proceed
- O** need map and compass
- F** need food and water
- V** indicates direction to proceed
- LL** all is well

authorities if you find evidence of vandalism.

Keep snowmobiles off ski slopes. Ski areas are for skiers.

Campground facilities should be respected. Avoid running over tables, stoves or other improvements covered with snow.

Litter and trash should never be left on the snow. Haul off litter.

Closed areas in National Forests must be avoided.

Liquor and snowmobiling do not mix. Don't drive and drink.

Big game should be observed from a distance. Deer and elk must work hard to survive during the winter. Snowmobilers who chase and harass game usually do not realize the hardships they cause the weakened animals. Occasionally, death is the result.

## Be prepared

Here is a checklist of equipment snowmobilers should gather for extended day trips and overnight trips:

### Extended day trips:

- Proper clothing, sunglasses, gloves, boots, headgear, suntan lotion, etc.
- Snowshoes or skis for use in case of breakdown
- Equipment in top shape and tested
- Ample food including lunch and emergency rations
- Matches and candles in waterproof container
- Extra gasoline in approved container
- Tools for snowmobile including extra drive belt, sparkplug and plug wrench
- First aid kit
- Map
- Compass
- Hatchet and knife
- Emergency flares
- Tarp, brightly colored, for signaling and temporary shelter
- Block and tackle with 50 feet of rope

### Overnight trips:

- Sleeping bag(s)
- Warm clothing
- Cooking equipment, cups, utensils, kettle
- High energy food snacks, i.e., chocolate, nuts, beans, sardines, dried soup, crackers, instant tea or coffee
- Flashlight with extra batteries



## White retirement ends longest electric cooperative career

*Manford White, who recently retired as office manager of Rural Electric Convenience Cooperative, Auburn, earned a special place in electric cooperative history when he completed his 40th year as an employee in August.*

**W**hen Manford R. White, long-time office manager of Rural Electric Convenience Cooperative (RECC), Auburn, retired last month, it marked the end of a career in rural electrification longer than that of any other electric cooperative employee in the state.

A veteran of over 40 years (he went to work for RECC on August 4, 1937), White began as a bookkeeper and later became office manager. He started to work the day the first RECC lines were energized.

A native of Pawnee, Illinois, he was graduated from Pawnee High School in 1930 and worked in the Pawnee post office and at an automotive wholesale house in Springfield for a short time before going to work for the cooperative.

"When I started work," White recalls, "Charles Masters, the project superintendent, and the late Merle B. 'Stormy' Ray were the only other full-time employees working in the office. Elizabeth Roncz was a part-time office worker, and she came to work full time when she graduated from high school the following spring. Our office was in Divernon then.

"Ray left after a couple of weeks,

and R. D. (Bud) Wilson, who had worked with the contractor who built the system, took his place. He worked for the cooperative until he retired a few years ago."

The cooperative has changed considerably since those days, he says. In 1937, the cooperative had one substation feeding 134 miles of line, and there were 395 consumers on that line.

"We had that one substation for a long time, until about 1946," he says, "and we were faced with some pretty critical voltage situations. Now, we have 1,253 miles of line serving 4,550 consumers."

Many prospective members were reluctant to sign up because of the stiff \$5 membership fee, and the \$3.25 monthly minimum frightened some prospects, too. There was no meter deposit in those days, and the monthly minimum paid for 40 kilowatt-hours of electricity. Some wondered if they would use that much.

"We were a little surprised," White relates, "because we had a pretty good load right from the start. Of course, everybody had lights, and many had electric ranges and water heaters. Of

course, the ladies had their washing machines, too."

Farming was different then than it is now, he remarks, and that most farms were more diversified. Many had a few cows and cream separators were a fair part of the load, since many farmers sold milk or separated their milk and sold the cream. Most farms had a couple of hogs, a few chickens and a garden, too. In fact, the chicken brooder load was a fairly regular thing in the spring. People would order baby chicks by mail, the mailman would deliver them, and they'd take it from there with the brooders.

Now there are fewer farms and they are much larger than the farms of the 1930's and most are specialized operations.

"People ask me once in a while what some of the highlights have been," White says, "and the biggest highlight I can think of is the growth of the system over the years. In 1937, not even the most imaginative person would have predicted that the cooperative would reach its present size or that the monthly kwh consumption would ever exceed 1,000 kwh per  
*(continued on page 23)*

# ELVIS PRESLEY - 1935 - 1977 - A Legend in His Time

Records and Tapes Listed Below are Special as Priced! This is a Limited Offer.

Send Check or Money Order - No C. O. D.'s. Add \$1.00 to Total Amount for Handling and we pay postage - FREE CATALOG INCLUDED. Uncle Jim O'Neal, Box AIE, Arcadia, California 91006

ELVIS PRESLEY - APM1-1675 ALBUM \$5.50  
THE SUN SESSIONS  
WHERE IT ALL BEGAN!

That's All Right; Blue Moon of Kentucky; I Don't Care If the Sun Don't Shine; Good Rockin' Tonight; Milkcow Blues Boogie; I'm Left, You're Right, She's Gone; You're A Heartbreaker; Baby Let's Play House; Mystery Train; I Forgot to Remember to Forget; I'll Never Let You Go; I Love You Because (1st version); Trying to Get To You; Blue Moon; Just Because; I Love You Because (2nd version).

8 TRACK TAPE - APS1-1675 \$6.98  
CASSETTE - APK1-1675 \$6.98

ELVIS PRESLEY - LSP-1254e ALBUM \$5.50  
Blue Suede Shoes; I'm Counting on You; I Got a Woman; One Sided Love Affair; I Love You Because; Just Because; Tutti Frutti; Tryin' to Get to You; I'm Gonna Sit Right Down and Cry (Over You); I'll Never Let You Go (Little Darlin'); Blue Moon; Money Honey.

8 TRACK TAPE - APS1-0382 \$6.98

ELVIS PRESLEY - LSP-1382e ALBUM \$5.50  
Rip It Up; Love Me; When My Blue Moon Turns to Gold Again; Long Tall Sally; First In Line; Paralyzed; So Glad You're Mine; Old Shep; Ready Teddy; Anyplace Is Paradise; How's the World Treating You; How Do You Think I Feel.

8 TRACK TAPE - APS1-0383 \$6.98

ELVIS PRESLEY - LSP-1515e ALBUM \$5.50  
Got a Lot o' Livin' to Do!; Blueberry Hill; Mean Woman Blues; Teddy Bear; Loving You; Don't Leave Me Now; Have I Told You Lately That I Love You?; I Need You So.

8 TRACK TAPE - APS1-0384 \$6.98

ELVIS PRESLEY - LSP-1707e ALBUM \$5.50  
Hound Dog; Heartbreak Hotel; Jailhouse Rock; Love Me; Don't Be Cruel; Love Me Tender; Treat Me Nice; Anyway You Want Me; I Want You, I Need You, I Love You; Loving You; All Shook Up; Too Much; That's When Your Heartaches Begin; Teddy Bear.

8 TRACK TAPE - P8S-1244 \$6.98  
CASSETTE - PK-1244 \$6.98

ELVIS PRESLEY - LSP-2426 ALBUM \$5.50  
Almost Always True; No More; Can't Help Falling In Love; Rock-A-Hula Baby; Moonlight Swin; Ito Eats; Silcin' Sand; Hawaiian Sunset; Island of Love; Blue Hawaii, Aloha-Oe; Ku-U-I-Po; Beach Boy Blues; Hawaiian Wedding Song.

8 TRACK TAPE - P8S-1019 \$6.98  
CASSETTE - PK-1019 \$6.98

ELVIS PRESLEY - LSP-1990e ALBUM \$5.50  
That's All Right; Lawdy, Miss Clawdy; Mystery Train; Playing for Keeps; Poor Boy; My Baby Left Me; I Was the One; Shake, Rattle and Roll; I'm Left, You're Right, She's Gone; You're a Heartbreaker.

8 TRACK TAPE - APS1-0386 \$6.98

ELVIS PRESLEY - ANL1-0971 ALBUM \$3.98  
Kentucky Rain; Fever; It's Impossible; Jailhouse Rock; Don't Be Cruel; I Got a Woman; All Shook Up; Loving You; In The Ghetto; Love Me Tender.

8 TRACK TAPE - ANS1-0971 \$4.98  
CASSETTE - ANK1-0971 \$4.98

ELVIS PRESLEY - LSP-2256 ALBUM \$5.50  
Tonight Is So Right for Love; What's She Really Like; Frankfort Special; Wooden Heart; G.I. Blues; Pocketful of Rainbows; Shoppin' Around; Big Boots; Didja' Ever; Blue Suede Shoes; Doin' the Best I Can.

8 TRACK TAPE - P8S-1169 \$6.98  
CASSETTE - PK-1169 \$6.98

ELVIS PRESLEY - CAS-2440 ALBUM \$2.98  
Almost In Love; Long Legged Girl; Edge Of Reality; My Little Friend; A Little Less Conversation; Rubberneckin'; Clean Up Your Own Back Yard; U.S. Male; Charro; Stay Away.

8 TRACK TAPE - C8S-0381 \$3.98  
CASSETTE - CK-0381 \$3.98

ELVIS PRESLEY - ACL-7007 ALBUM \$2.98  
Frankie And Johnny; Come Along; What Every Woman Lives For; Hard Luck; Please Don't Stop Loving Me; Down By The Riverside And When The Saints Go Marching In; Petunia, The Gardener's Daughter; Beginner's Luck; Shout It Out.

8 TRACK TAPE - C8S-7007 \$3.98  
CASSETTE - CK-7007 \$3.98

ELVIS PRESLEY - CAS-2595 ALBUM \$2.98  
Burning Love; Tender Feeling; Am I Ready; Tonight Is So Right For Love; Guadalajara; It's A Matter Of Time; No More; Santa Lucia; We'll Be Together; I Love Only One Girl.

8 TRACK TAPE - C8S-1216 \$3.98  
CASSETTE - CK-1216 \$3.98

ELVIS PRESLEY - VPSX-6089 ALBUM \$7.50  
ALOHA FROM HAWAII - 2 RECORD SET  
Recorded Live at the Honolulu International Center. 1973 - See See Rider; Burning Love; Something; You Gave Me a Mountain; Steamroller Blues; My Way; Love Me; Johnny B. Goode; It's Over; Blue Suede Shoes; I'm So Lonesome I Could Cry; I Can't Stop Loving You; Hound Dog; What Now My Love; Fever; Welcome to My World; Suspicious Minds; I'll Remember You; American Trilogy; Big Hunk of Love; Can't Help Falling In Love; Long Tall Sally; Whole Lotta Shakin' Goin' On.

8 TRACK TAPE - P8S-5144 \$8.00  
CASSETTE - PK-5144 \$8.00

ELVIS PRESLEY - CPL1-0341 ALBUM \$5.50  
That's All Right; I Love You Because; Heartbreak Hotel; Don't Be Cruel; Love Me; Trying To Get To You; Love Me Tender; Peace In The Valley; Elvis Interview from 1958; A Fool Such As I; Tonight's All Right For Love; Are You Lonesome Tonight; Can't Help Falling In Love.

8 TRACK TAPE - CPS1-0341 \$6.98  
CASSETTE - CPK1-0341 \$6.98

ELVIS PRESLEY - CPL1-1349 ALBUM \$5.50  
Harbor Lights; Interview; I Want You, I Need You, I Love You; Blue Suede Shoes; Blue Christmas; Jailhouse Rock; It's Now or Never; Cane and a High Starched Collar; Presentation of Awards to Elvis; Blue Hawaii; Such a Night; Baby What You Want Me to Do; How Great Thou Art; If I Can Dream.

8 TRACK TAPE - CPS1-1349 \$6.98  
CASSETTE - CPK1-1349 \$6.98

ELVIS PRESLEY - LSP-4776 ALBUM \$5.50  
Theme From 2001: A Space Odyssey; That's All Right; Proud Mary; Never Been To Spain; You Don't Have to Say You Love Me; You've Lost That Lovin' Feelin'; Polk Salad Annie; Love Me; All Shook Up; Heartbreak Hotel; Teddy Bear; Don't Be Cruel; Love Me Tender; The Impossible Dream; Introductions By Elvis; Hound Dog; Suspicious Minds; For The Good Times; American Trilogy; Funny How Time Slips Away; I Can't Stop Loving You; Can't Help Falling In Love.

8 TRACK TAPE - P8S-2054 \$6.98  
CASSETTE - PK-2054 \$6.98

ELVIS PRESLEY - APL1-1506 ALBUM \$5.50  
Hurt; Never Again; Blue Eyes Crying In The Rain; Danny Boy; The Last Farewell; For The Heart; Bitter They Are, Harder They Fall; Solitaire; Love Coming Down; I'll Never Fall In Love Again.

8 TRACK TAPE - APS-1-1506 \$6.98  
CASSETTE - APK1-1506 \$6.98

ELVIS PRESLEY - APL1-2274 ALBUM \$5.50  
Welcome To My World; Help Me Make It Through The Night; Release Me; I Really Don't Want To Know; For The Good Times; Make The World Go Away; Gentle On My Mind; I'm So Lonesome I Could Cry; Your Cheatin' Heart; I Can't Stop Loving You.

8 TRACK TAPE - APS1-2274 \$6.98  
CASSETTE - APK1-2274 \$6.98

ELVIS PRESLEY - CAS-2533 ALBUM \$2.98  
I Got Lucky; What A Wonderful Life; I Need Somebody To Lean On; Yoga Is As Yoga Does; Riddin The Rainbow; Fools Fall In Love; The Love Machine; Home Is Where The Heart Is; You Gotta Stop; If You Think I Don't Need You.

8 TRACK TAPE - C8S-7014 \$3.98  
CASSETTE - CK-7014 \$3.98

ELVIS PRESLEY - CAS-2472 ALBUM \$2.98  
You'll Never Walk Alone; Who Am I?; Let Us Pray; Peace In The Valley; We Call On Him; I Believe; It Is No Secret; Sing You Children; Take My Hand, Precious Lord.

8 TRACK TAPE - C8S-7012 \$3.98  
CASSETTE - CK-7012 \$3.98

ELVIS PRESLEY - LSP-4460 ALBUM \$5.50  
Snowbird; Little Cabin on the Hill; Whole Lot-a Shakin' Goin' On; It's Your Baby, You Rock It; The Fool; Faded Love; I Washed My Hands In Muddy Waters; Tomorrow Never Comes; I Really Don't Want to Know; There Goes My Everything; Funny How Time Slips Away; Make the World Go Away.

8 TRACK TAPE - P8S-1655 \$6.98  
CASSETTE - PK-1655 \$6.98

ELVIS PRESLEY - DL2-5001 ALBUM \$4.98  
Burning Love; I'll Be There; Fools Fall In Love; Follow That Dream; You'll Never Walk Alone; Flaming Star; Yellow Rose of Texas; Old Shep; Mama; Rubberneckin'; U.S. Male; Frankie And Johnny; If You Think I Don't Need You; Easy Come, Easy Go; Separate Ways; Peace In The Valley; Big Boss Man; It's A Matter Of Time.

8 TRACK TAPE - D82-5001 \$5.98

ELVIS PRESLEY - LSP-3758 ALBUM \$5.50  
How Great Thou Art; In the Garden; Somebody Bigger Than You and I; Farther Along; Stand by Me; Without Him; So High; Where Could I Go But to the Lord; By and By; If the Lord Wasn't Walking by My Side; Run On; Where No One Stands Alone; Crying in the Chapel.

8 TRACK TAPE - P8S-1218 \$6.98  
CASSETTE - PK-1218 \$6.98

ELVIS PRESLEY - LPM-4088 ALBUM \$5.50  
Trouble; Guitar Man; Lawdy Miss Clawdy; Baby, What You Want Me to Do; Medley: Heartbreak Hotel, Hound Dog, All Shook Up; Can't Help Falling In Love; Jailhouse Rock; Love Me Tender; Where Could I Go but to the Lord; Up Above My Head; Saved; Blue Christmas; One Night; Memories; Medley: Nothingville, Big Boss Man, Guita Man, Little Egypt, Trouble, Guita Man; If I Can Dream.

8 TRACK TAPE P8S-1391 \$6.98  
CASSETTE - PK-1391 \$6.98

ELVIS PRESLEY - CAS-2611 ALBUM \$2.98  
Separate Ways; Sentimental Me; In My Way; I Met Her Today; What Now, What Next; Where To?; Always On My Mind; I Slipped, I Stumbled, I Fell; Is It So Strange; Forget Me Never; Old Shep.

8 TRACK TAPE - C8S-1227 \$3.98  
CASSETTE - CK-1227 \$3.98

ELVIS PRESLEY - CAS-2567 ALBUM \$2.98  
Old MacDonald; Guita Man; Big Boss Man; Frankie And Johnny; You Don't Know Me; Confidence; How Would You Like To Be; They Remind Me Too Much Of You; Long Legged Girl; Down By The Riverside; When The Saints Go Marching In.

8 TRACK TAPE - C8S-0380 \$3.98  
CASSETTE - CK-0380 \$3.98

ELVIS PRESLEY - LSP-3450 ALBUM \$5.50  
Your Cheatin' Heart; Summer Kisses, Winter Tears; Flinders Keepers, Losers Weepers; Memphis, Tennessee; For the Millionth and the Last Time; Santa Lucia; I Met Her Today; In My Way; Forget Me Never; Tomorrow Night; Sound Advice; When It Rains, It Really Pours.

8 TRACK TAPE P8S-1078 \$6.98  
CASSETTE - PK-1078 \$6.98

ELVIS PRESLEY - LSP-2765 ALBUM \$5.50  
It's Now or Never; Stuck On You; Fame And Fortune; I Gotta Know; Surrender; I Feel So Bad; Are You Lonesome To-Night?; His Latest Flame; Little Sister; Good Luck Charm; Anything That's Part Of You; She's Not You.

8 TRACK TAPE - P8S-1057 \$6.98  
CASSETTE - PK-1057 \$6.98

ELVIS PRESLEY - APL1-2560 ALBUM \$5.50  
Stop, Look and Listen; Adam and Evil; All That I Am; Never Say Yes; Am I Ready; Beach Shack; Spinout; Smorgasbord; I'll Be Back; Tomorrow Is a Long Time; Down in the Alley; I'll Remember You.

8 TRACK TAPE - APS1-2560 \$6.98  
CASSETTE - APK1-2560 \$6.98

ELVIS PRESLEY - AFL1-2428 ALBUM \$5.50  
MOODY BLUE HIS LAST ALBUM  
Unchained Melody; If You Love Me, Little Darlin'; He'll Have To Go; Let Me Be There; Way Down; Pledging My Love; Moody Blue; She Thinks I Still Care; It's Easy For You.

8 TRACK TAPE - AFS1-2428 \$6.98  
CASSETTE - AFK1-2428 \$6.98

ELVIS PRESLEY - LSP-4690 ALBUM \$5.50  
He Touched Me; I've Got Confidence; Amazing Grace; Seeing Is Believing; He Is My Everything; Bosom Of Abraham; An Evening Prayer; Lead Me, Guide Me; There Is No God But God; A Thing Called Love; I, John; Reach Out To Jesus.

8 TRACK TAPE - P8S-1923 \$6.98  
CASSETTE - PK-1923 \$6.98

ELVIS PRESLEY - ANL1-1319 ALBUM \$3.98  
His Hand In Mine; I'm Gonna Walk Dem Golden Stairs; In My Father's House; Milky White Way; I Believe In The Man In The Sky; Joshua Fit The Battle; He Knows Just What I Need; Swing Down Sweet Chariot; Mansion Over The Hilltop; If We Never Meet Again; Working On The Building; Known Only To Him.

8 TRACK TAPE - ANS1-1319 \$4.98

ELVIS PRESLEY - CAS-2518 ALBUM \$2.98  
C'mon Everybody; A Whistling Tune; Angel; Follow That Dream; Easy Come, Easy Go; Today, Tomorrow and Forever; I'm Not The Marrying Kind; King Of The Whole Wide World; This Is Living; I'll Take Love.

8 TRACK TAPE - C8S-7013 \$3.98  
CASSETTE - CK-7013 \$3.98

# If Ruptured TRY THIS OUT

Modern Protection Provides Great  
Comfort and Holding Security

An "eye-opening" revelation in sensible and comfortable reducible rupture protection may be yours for the asking, without cost or obligation. Full details of the new and different Rice Support will be sent you Free. Here's a Support that has brought joy and comfort to thousands—by releasing them from Trusses that bind and cut. Designed to securely hold a rupture up and in where it belongs and yet give freedom of body and genuine comfort. For full information—write today! **WILLIAM S. RICE, Inc., ADAMS, N. Y., 13605 DEPT. 9T**

## LIFETIME TANK COATINGS

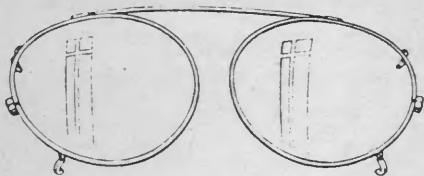
Stop all leaks in steel and concrete — Prevent rust forever. Roof coatings for tar paper, composition and cedar shingles, and metal buildings. Anyone can apply all coatings.

Fix it once and forget it. This is our 28th year. Let us send you complete information

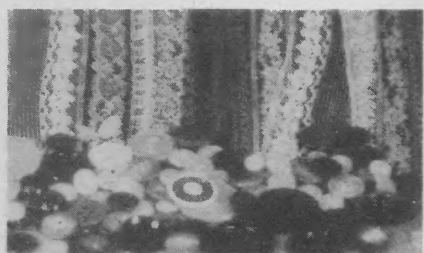
**VIRDEN PERMA-BILT CO.**

Box 7160 IN Ph. 806-352-2761  
2821 Mays St.  
Amarillo, Texas 79109

## Clip-On Magnifiers



Clip **MAGNIFIERS** on regular glasses. **SEE CLEARER INSTANTLY.** Read fine print. Do close work. Neat, metal frame. 30 day trial. **SATISFACTION GUARANTEED.** Impact resistant lenses. State age. Send only \$8.95 + 75¢ handling. Precision Optical, Dept. 109A Rochelle, ILL. 61068



## 50 YARDS LACE \$1.45

**LACE — LACE — LACE . . . 50 yards of Lace** in delightful patterns. Edgings, insertions, etc. Assorted beautiful designs, colors and widths. Pieces at least 10 yards in length—none smaller. Marvelous for dresses, pillow cases, etc. Terrific as hem facing on new double knit fabrics. **Only \$1.45** plus 30¢ pstg., double order **\$2.79** plus 50¢ pstg. Satisfaction guaranteed!

**FREE** with lace **50 BUTTONS!**

50 New, High Quality Buttons. Assorted colors, sizes and shapes. Sent **FREE** with each lace order. Please allow up to 6 weeks for delivery.

**LACE LADY**  
808 Washington

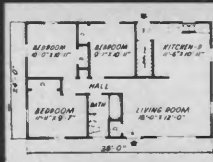
**DEPT LN-756**  
St. Louis, Mo. 63101

Over Quarter Century of Building  
for the American Family . . . .



## QUALITY HOMES AT LOWEST PRICES

ON YOUR FOUNDATION / INCLUDING PLUMBING, WIRING & BIRCH CABINETS



Every Nordaas Home includes full-weight conventional construction, NOT PRE-FAB or PRE-CUT! Your new home completely framed, roof shingled, fully enclosed, 70% of the carpenter work is done for you, or we will finish carpentry for a little extra. All finishing materials furnished — blanket insulation, hardwood cabinets all ready-made, inside doors ready-hung with trim installed. Western dry dimension lumber. All materials direct from mill and factory to you saves hundreds of dollars! **FREE** planning service — build to your own plans or choose from over 1000 floor plans.

**FREE PLAN SERVICE • FREE DELIVERY 1500 MILES**

One of America's Largest Builders of Homes

Write for Free Floor Plan at No Obligation

**NORDAAS AMERICAN HOMES**

Dept 29-1, Minnesota Lake, Minnesota 56068  
PHONE (507) 462-3331

**5% OPEN  
HOUSE  
DISCOUNT**

Over 1001  
Floor Plans  
To Choose From



Available throughout the entire Midwest  
in America's Great Farming States —  
Save this Ad for Future Discount.

## FREE! HOW TO GROW BOOK! STRAWBERRIES



Tells you how to grow big, beautiful, delicious berries in your garden for fun and profit! And All **AHRENS** Indiana certified plants are guaranteed to grow for you. New colorful Berry Book has 44 pages including helpful hints on growing your own strawberries, raspberries, blackberries, blueberries, grapes, asparagus and rhubarb. Plus recipes. **FREE** Plant Offer.

**AHRENS NURSERY**

R.R. 1

Huntingburg, Indiana 47542

Yes, rush my new Berry Book and Catalog Free today.

Name \_\_\_\_\_

Address \_\_\_\_\_

P.O. \_\_\_\_\_ State \_\_\_\_\_

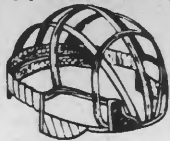
Zip \_\_\_\_\_

IL-78

Write  
For Your  
Copy  
Today!

**FREE**

Natural Look



AIRLITE  
CAPLESS DESIGN

# CAPLESS Stretch WIGS

Any  
Style

Feels as light and cool as your own hair. \$6.95

worth  
much  
more

"PERMANENTLY SET" • READY TO WEAR STYLES • NEVER NEED SETTING

- Choice of 17 attractive colors or custom matched to your own hair
- Permanently set—wash and wear—the setting bounces back
- Made of miracle modacrylic fiber—has the luster, rich body and bounce of human hair—behaves better than real hair
- No costly settings at the beauty parlor
- Packs in your purse—crush resistant
- Looks and feels like real hair—you'll mistake it for your own



Style C-715



Style C-702



Style C-518



Style C-709



Style C-727



Style C-545



Style C-136



Style C-716



Style C-712



Style C-511W



Style C-603



Style C-526



Style C-714



Style C-724

## FREE 10 DAY TRIAL COUPON!

FRANKLIN FASHIONS CORP., Dept. W-163  
103 East Hawthorne Ave., Valley Stream, N.Y. 11580

Rush my "Natural Look Capless Wig" style checked for \$6.95 plus \$1 shipping and handling. I must be absolutely satisfied or I can return my order within 10 days and my money will be refunded.

Check Box of Style Number Desired

- C-702    C-716  
 C-518    C-724  
 C-727    C-545  
 C-709    C-511W  
 C-712    C-136  
 C-714    C-526  
 C-715    C-603

Check Box of Color Desired (or Send a sample of Your Hair for Expert Matching)

- |  |  |  |
|--|--|--|
| <input type="checkbox"/> Black         | <input type="checkbox"/> Dark Blonde   | <input type="checkbox"/> Dark Frosted & Grey |
| <input type="checkbox"/> Off Black     | <input type="checkbox"/> Ash Blonde    | <input type="checkbox"/> Mixed Black & Grey  |
| <input type="checkbox"/> Light Brown   | <input type="checkbox"/> Platinum      | <input type="checkbox"/> Mixed Brown & Grey  |
| <input type="checkbox"/> Medium Brown  | <input type="checkbox"/> Light Auburn  |  |
| <input type="checkbox"/> Dark Brown    | <input type="checkbox"/> Medium Auburn |  |
| <input type="checkbox"/> Light Blonde  | <input type="checkbox"/> Dark Auburn   |  |
| <input type="checkbox"/> Medium Blonde | <input type="checkbox"/> Light Frosted |  |

Name \_\_\_\_\_

Address \_\_\_\_\_

PREPAID: I enclose \$6.95 plus \$1 for shipping and handling.    C.O.D.: I enclose \$2 deposit and will pay postman balance plus pstg. & handling. No C.O.D. orders accepted without required deposit.

N.Y. State residents add sales tax.

Compare our prices on

**HIGH POTENCY**

**VITAMINS**

AND SUPPLEMENTS FROM

**NUTRITION HEADQUARTERS**

All prices POSTPAID! Satisfaction guaranteed or money back.



**"KITCHEN FARM" SEED SPROUTER**  
Make your own bean sprouts. Complete Kit 100

**PROTEIN DIET POWDER**  
1 lb. CONTAINS 416 GRAMS OF PROTEIN  
lb. 398

**ORGANIC IRON Supreme**  
100 TABLETS 149  
500 for 4.95

**DOLOMITE & BONE MEAL**  
100 TABLETS 69¢  
500 for 2.65

**VITAMIN E Beauty Cream**  
1 oz. Jar 100

**SUNFLOWER SEED KERNELS**  
12 oz. 89¢  
6 for 4.99

**"SPECIAL C-500"**  
500 mg Vit. C Plus Rose Hips, 200 mg Bioflavonoids, 50 mg Rutin, 25 mg Hesperidin  
100 TABLETS 129  
4.95 VALUE 1

**WE PAY ALL POSTAGE**

**THE BEST TIME TO SAVE IS NOW!**

**NUTRITION HEADQUARTERS**  
104 West Jackson St. — N1688  
Carbondale, Ill. 62901

PRINT NAME \_\_\_\_\_  
ADDRESS \_\_\_\_\_  
CITY \_\_\_\_\_ STATE \_\_\_\_\_ ZIP \_\_\_\_\_

© 1977 NUTRITION HQS

**VITAMIN B6**  
50 MG TABLETS  
100 TABLETS 95¢  
500 for 4.25

**ONE GRAM PROTEIN DIET TABLETS**  
Each contains 1 gram of protein.  
100 TABLETS 249  
500 TABLETS 995

**GARLIC & PARSLEY TABLETS**  
100 TABLETS 75¢  
500 for 3.25

**VITAMINS FOR HAIR CARE**  
Same Formula Others sold for 9.95  
50 DAY SUPPLY \$3.95

**BONE MEAL TABLETS**  
100 TABLETS 39¢  
1,000 for 2.49

**Super Potency 500 MCG. VITAMIN B12**  
100 TABLETS 119  
500 for 4.25

**DOLOMITE Calcium Rich**  
100 TABLETS 49¢  
500 for 1.85

**10 MCG. ZINC TABLETS**  
100 TABLETS 49¢  
1,000 for 4.45

**"Formula T-M"**  
Therapeutic Multi-Vitamins with Minerals  
100 TABLETS \$1.85  
500 for 8.99

**HERBAL LAXATIVE**  
100 TABLETS 95¢  
500 for 3.75

**BIG 4**  
KELP, VIT. B6, LECITHIN, CIOER VINEGAR  
100 TABLETS 98¢  
500 for 3.88

**19 GRAIN LECITHIN CAPSULES**  
(1,200 mg.)  
100 CAPSULES 159  
300 for 4.39

**RAISIN NUT & SEED Trail Mix Natural Snack**  
12 oz. 149

**ONE GRAM (1000 mg) VITAMIN C**  
With Rose Hips  
100 TABLETS 149

**FORMULA S-6**  
(Comparable to STRESS TABS 600)  
60 TABLETS 289

**PAPAYA PAIN (Digestant)**  
100 TABLETS 75¢  
500 for 3.25

**100 mg. VIT. & Acerola in Each Delicious Tablet. ACEROLA-C**  
100 TABLETS 98¢  
500 for 4.49

**250MG. GINSENG TEA CAPSULES**  
50 for 249  
100 for 398  
250 for 949

**BREWERS YEAST TABLETS**  
250 TABLETS 65¢  
1,000 for 1.95

**LECITHIN POWDER**  
Dissolves Easily  
8 oz. BOTTLE 125

**100 MCG. GINSENG TABLETS**  
50 TABLETS 99¢  
250 for 3.95  
**SUPER GINSENG 250 MCG.**  
100 TABLETS 298  
500 for 12.95

**ALFALFA Tablets**  
100 TABLETS 49¢  
500 for 1.95

**Decicated LIVER**  
100 TABLETS 79¢  
500 for 3.49

**VITAMINS A & D (5,000 A; 400 D)**  
100 TABLETS 49¢  
1,000 for 3.50

**50 MCG. VITAMIN B2 (RIBOFLAVIN)**  
100 TABLETS 125  
500 for 5.50

**BY MAIL POSTPAID**

**VITAMINE**  
400 UNIT CAPSULES  
 50 DAY SUPPLY 88¢

100 FOR \$149  
 500 FOR \$725  
 1000 FOR \$1398

**500 MG ASCORBIC ACID VITAMIN C**  
100 TABLETS 95¢  
500 for 4.49

**WHEAT GERM RAW FLAKES**  
1 lb. 59¢  
5 lbs. for 2.79

**KELP Tablets (Iodine)**  
100 TABLETS 29¢  
1,000 for 1.69

**HI-POTENCY STRESS FORMULA**  
(Same formula as PLUS 72)  
100 TABLETS 195  
250 for 3.89

**HERBAL DIURETIC**  
100 TABLETS 175  
500 for 6.50

**500 MG BEE POLLEN TABLETS**  
100 TABLETS 249  
500 for 9.85

**ACIDOPHILUS CAPSULES**  
(Our Price)  
100 CAPSULES 198  
250 for 4.25

**500 MG BEE POLLEN TABLETS**  
100 TABLETS 249  
500 for 9.85

**Our "TOP-B" B-COMPLEX "50"**  
Famous Formula at a Sensational Low Price!  
Every Capsule Contains 50 mg B1, B2, B6, Nicotinamide, Panto Acid, Choline, Inositol, 50 mcg B12, Biotin, 30 mg Paba, 100 mcg Folic Acid  
50 Capsules 4.95 Value 169  
100 Capsules 7.45 Value 298

**500 MG. BRAN TABLETS**  
Easy way to get this important wheat fiber.  
300 TABLETS \$1

**GIANT 20 MINIM WHEAT GERM OIL CAPSULES**  
40 CAPSULES 110  
120 for 2.89

**83 MG POTASSIUM TABLETS**  
100 TABLETS 125  
500 for 5.00

© 1977 NUTRITION HQS

**500 MG BEE POLLEN TABLETS**  
100 TABLETS 249  
500 for 9.85

**ACIDOPHILUS CAPSULES**  
(Our Price)  
100 CAPSULES 198  
250 for 4.25

**GARLIC OIL CAPSULES**  
100 CAPSULES 79¢  
500 for 3.75

**MULTI-MINERALS 9 VITAL MINERALS**  
100 TABLETS 98¢  
500 for 4.50

**TIME RELEASE VITAMIN C**  
500 MG CAPSULES 100  
100 CAPSULES 298

**500 MG. BRAN TABLETS**  
Easy way to get this important wheat fiber.  
300 TABLETS \$1

**FRUIT & NUT CAROB Candy Bars**  
3 oz. 60¢

**Limit: One of Any Size to A Family ONLY WITH THIS AD**

Mail Coupon with remittance to NUTRITION HEADQUARTERS  
104 West Jackson, N1688  
Carbondale, Ill. 62901

**500 MG BEE POLLEN TABLETS**  
100 TABLETS 249  
500 for 9.85

**ACIDOPHILUS CAPSULES**  
(Our Price)  
100 CAPSULES 198  
250 for 4.25

**GARLIC OIL CAPSULES**  
100 CAPSULES 79¢  
500 for 3.75

**MULTI-MINERALS 9 VITAL MINERALS**  
100 TABLETS 98¢  
500 for 4.50

**TIME RELEASE VITAMIN C**  
500 MG CAPSULES 100  
100 CAPSULES 298

**500 MG. BRAN TABLETS**  
Easy way to get this important wheat fiber.  
300 TABLETS \$1

**FRUIT & NUT CAROB Candy Bars**  
3 oz. 60¢

**Limit: One of Any Size to A Family ONLY WITH THIS AD**

Mail Coupon with remittance to NUTRITION HEADQUARTERS  
104 West Jackson, N1688  
Carbondale, Ill. 62901

**500 MG BEE POLLEN TABLETS**  
100 TABLETS 249  
500 for 9.85

**ACIDOPHILUS CAPSULES**  
(Our Price)  
100 CAPSULES 198  
250 for 4.25

**GARLIC OIL CAPSULES**  
100 CAPSULES 79¢  
500 for 3.75

**MULTI-MINERALS 9 VITAL MINERALS**  
100 TABLETS 98¢  
500 for 4.50

**TIME RELEASE VITAMIN C**  
500 MG CAPSULES 100  
100 CAPSULES 298

**500 MG. BRAN TABLETS**  
Easy way to get this important wheat fiber.  
300 TABLETS \$1

**FRUIT & NUT CAROB Candy Bars**  
3 oz. 60¢

**Limit: One of Any Size to A Family ONLY WITH THIS AD**

Mail Coupon with remittance to NUTRITION HEADQUARTERS  
104 West Jackson, N1688  
Carbondale, Ill. 62901

**Money Saving MAIL ORDER BLANK**

List items you wish here:

QUAN-TITY	SIZE	NAME OF PRODUCT	TOTAL PRICE

**SATISFACTION GUARANTEED WE PAY ALL POSTAGE TOTAL—amount enclosed**

PRINT NAME \_\_\_\_\_  
ADDRESS \_\_\_\_\_  
CITY \_\_\_\_\_ STATE \_\_\_\_\_ ZIP \_\_\_\_\_

© 1977 NUTRITION HQS

# White retirement ends longest electric cooperative career

(continued from page 18)

month for residential accounts.

"Now," he continues, "with many 1,500-to-2,500-square foot houses going in, and with electric space heating, that figure is reached easily."

"Another highlight of the time I've been here has been the shift from a cooperative membership that was mostly farm oriented to one that is largely residential. While farms have diminished in number, the development of a number of subdivisions within our service area has more than offset the loss of farm accounts. I predict this trend will continue, possibly for several years," White says.

"I think the early pioneers of the program deserve to be remembered," White emphasizes, "because many of them gave much time and went to considerable expense—knowing there would be no reimbursement—so that central station electric service might be brought to their homes. The majority of today's members have never been without the benefit of electricity in their homes, and I hope that they will always appreciate the efforts of those early members," White concluded.

He and his wife, Carlene, plan to remain in Springfield.

# Illinois has large stake in coal's future

(continued from page 5)

could significantly alter the pace of coal development," Simon added. "It is believed, however, that the impact of such an early commitment, if it develops, would be most felt immediately after 1985. This is because of the time required to fully implement such a commitment," he concluded.

The importance to the electric industry of the sharp increase in coal development was explained by Carl E. Bagge, president of the National Coal Association.

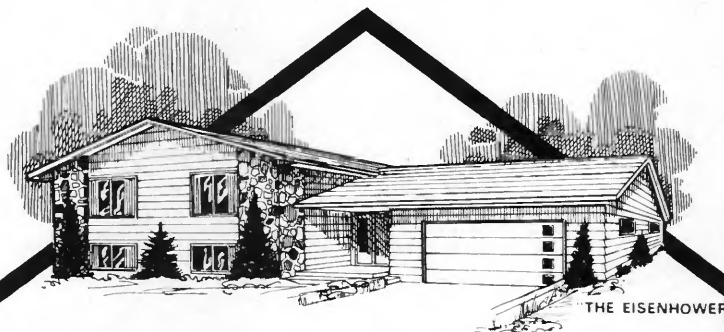
Bagge said his organization has studied plans of the principal coal consumers, the electric utilities, for new power plants. He said, "We found

that they plan to have 241 new coal-fired generating units on line by 1985, and 18 more the following year. We confirmed 259 plants by the end of 1986, capable of generating 130,000 megawatts of power."

By 1985, Bagge said, these new plants will consume 400 million tons of additional coal. That figure will rise to 430 million tons in 1986, he added.

When these new units come on line, the 1985 coal consumption in the electric industry—even considering retirements—is expected to be 820 million tons, Bagge said.

"Obviously, the electric utilities have made a strong commitment to coal," Bagge stressed, "and the coal industry is responding."



Still giving you the most home for your money with...

# P.M.F.S.

**PRICE:** We're still giving you the most home for your money. Ask our thousands of satisfied buyers. You always get the lowest possible prices from President!

**MATERIALS:** President Homes are constructed of top quality, nationally known materials. You're going to live in your home a long time; you need a builder that will never compromise on quality — President!

**FINANCING:** These days, low prices aren't enough — we offer immediate, low-cost financing for a home you can own free and clear in 10 years!

**SERVICE:** Your home will be built by experienced craftsmen — home construction specialists who quickly turn your plans or one of ours into a quality home you'll be proud to own! **P.M.F.S. PRESIDENT HOMES MAKES THE DIFFERENCE!**

Learn how you can save \$1,000's on your new home. Send for full color catalog TO: **PRESIDENT HOMES**, 4808 N. LILAC DR., MINNEAPOLIS, MINN. 55429 (612) 537-3622  
 I own a lot     I can get a lot

NAME \_\_\_\_\_  
 ADDRESS \_\_\_\_\_  
 TOWN \_\_\_\_\_ STATE \_\_\_\_\_  
 ZIP \_\_\_\_\_ PHONE \_\_\_\_\_  
 We would like to be in our new home by \_\_\_\_\_ IL-30

Write For Your Local Illinois President Homes Representative

# PRESIDENT HOMES

CUSTOM BUILT PRE-CUT HOMES ... OUR ONLY BUSINESS



**NOW PLANT Husky Young TREES**

AT Wholesale Prices

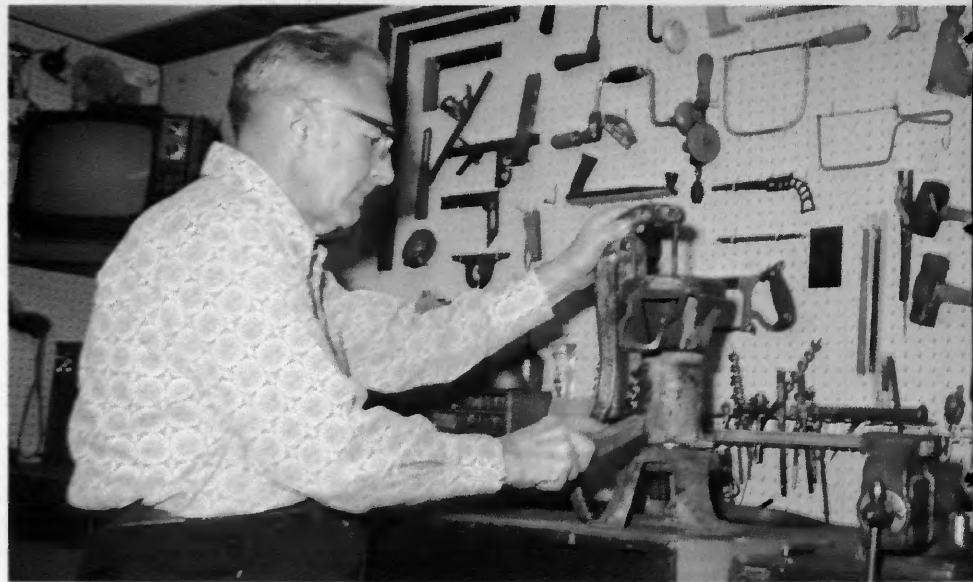
Colorado Blue Spruce plus 26 other evergreen varieties; Black Walnut plus 28 other deciduous trees including many hardwoods. Ideal for forestation, windbreaks, wildlife shelter and food, soil conservation...increase property value. Low quantity prices.

Send for Free Catalog



**VANS PINES INC.**

Box 765 West Olive, Mich. 49460  
 Phone 616 399-1620



# Russel Terry all 'pumped up' about collection

In mid-December, a few days after having a citizen's band radio installed in his car, Clyde R. (Russel) Terry had not yet decided on a nickname, or "handle," to use when he talked with other CB'ers.

Yet, Terry has over 170 handles.

They aren't CB handles, though, but pump handles, all attached to various pumps in his collection that totaled 172 last month.

Terry, a member of Menard Electric Cooperative, Petersburg, has been gathering the pumps, mostly the pitcher types so familiar at farms and rural homes through the first half of this century, for over five years.

The collection sprang from an unusual table lamp his wife, Eloise, saw one day in a Springfield store in 1972. "Later in that week," Terry said, "I went by the store to look at it and decided that I could make one like it if I could just find an old pump.

"A few weeks later, I saw the late Tom Cory of Cory Pump Company and asked him if he had an old pitcher pump. He said he had one, so I bought it, got all the necessary parts together

and made a table lamp for several dollars less than the one in the window."

While Terry was working on the lamp, it occurred to him that collecting the pitcher pumps would make a fine hobby.

With a starter piece of one pump—the one for the lamp—Terry was off on his search.

The second pump was located by his wife on the Jim Guinan home place near New Salem State Park. Terry had a small garden plot there. "For about two years we had been going in and out of this garage, but didn't know that little pump was in plain sight, hanging there on the wall. I asked Jim if I could buy it, but he said it wasn't for sale, but he would give it to me," Terry went on.

"After that I started asking everyone if they had a pump or knew where I could get one. I also ran want ads in papers and magazines, including the *Illinois Rural Electric News*, and shopped all the antique stores in Springfield and nearby towns."

Terry has developed a thorough

system of getting at the pumps. He has written antique shops in numerous cities, asking for descriptions and prices of any small pumps they may have. He attends farm sales, hoping to catch a pump being auctioned off. This is a time-consuming method, he added, because the wait for the sale of the pump may be several hours at some sales.

"Our most enjoyable way of locating pumps is when we take our vacation," Terry said. "We learned not to take the freeways or toll roads, but to take the older roads which are more scenic and have more antique stores on them."

The collection is cataloged, using six categories: manufacturer, model, cylinder size, type of cylinder (cast iron or brass) or whether it is a force pump or regular open-end type.

In the collection, Terry has about 45 different manufacturers represented.

While his collection is mainly the pitcher pumps, Terry's interest in pumps has led to acquisition of various force-type pumps, too.





*Far left: A basement workshop is the setting for clean-up and paint-up work on newly obtained pumps in Russel Terry's collection. Near left: Terry is framed by some of the unusual pumps he has collected and restored in the past several years.*

Terry has his pumps displayed in what amounts to a pump museum, where they are labeled and arranged on shelves.

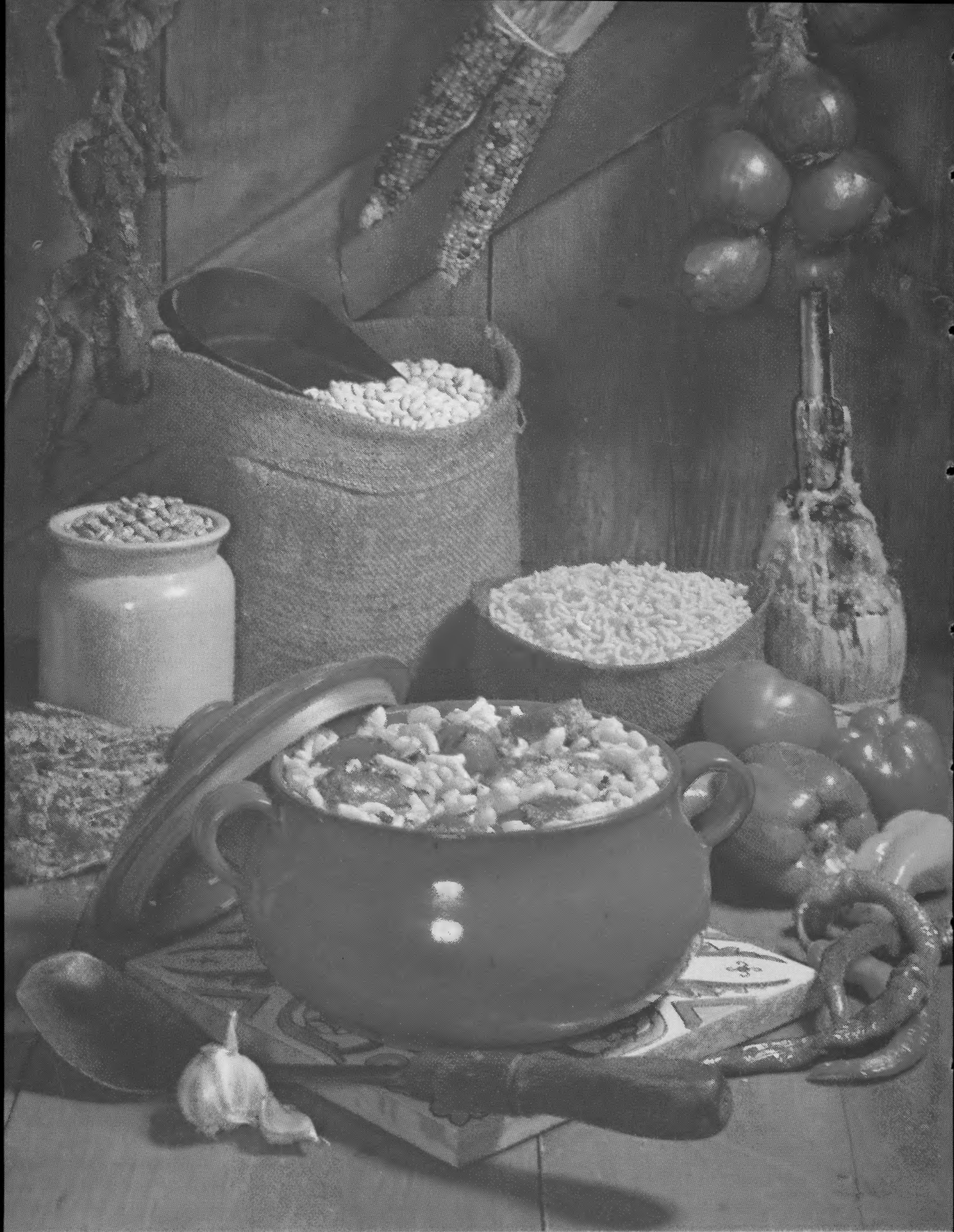
When he locates and purchases an old pump, the first task is to clean it up, replace worn bolts and nuts and paint it.

He needs about two hours to disassemble a pump, clean it thoroughly, reassemble it and paint. Pump no. 172 was on his workbench.

"I have had to replace a lot of bolts," Terry said, as he displayed one worn about three-quarters of the way through by years of water pumping. "Many of the bolts break as I attempt to remove the nut. And, it is hard to find the square-headed bolts like they used. Most bolts today are hex-headed."

Some of the pumps are rusty when Terry finds them; others are covered with several coats of paint. In order to restore the pumps to their original condition, Terry sought to find the original paint color. He wrote to manufacturers asking about paint

*(continued on page 28)*



# B is for Beans

■ It was the high cost of meat that put bargain hunters onto beans. As the demand for this all-time economy food zoomed, prices went up — doubling and sometimes tripling. Even so, dry beans can still be classed as bargain food ready to supply protein, B vitamins and minerals at less than half the cost of an equivalent serving of the lowest priced meats, poultry and fish. As the supply catches up with the demand, bean prices should level off making them our least expensive source of protein.

A word about the protein in beans. All protein foods, whether animal or plant, are built of amino acids in unique combinations. Of the 20 or so amino acids that are known, our bodies cannot make 8 and these are the ones that need to be present in the foods we eat for use in building, repairing and maintaining body tissue. Some proteins, such as those in fish, poultry and meat, contain enough of all the essential amino acids and (along with milk, cheese and egg) are complete proteins. On the other hand, beans, nuts and grains contain proteins that are usually low in one or more of the essential acids. They are still good sources of protein. To make up for their shortcomings, serve beans in combination with protein sources; with rice, bread or pasta or with a small amount of meat, cheese or eggs.

## BEANS AND PASTA, ITALIAN STYLE

- |  |                                 |
|--|---------------------------------|
| 1 pound dried Great Northern beans or marrow beans | 1 can (1 lb.) tomatoes          |
| 3 cups water                                       | ¼ cup dark corn syrup           |
| 1 package (8 oz.) elbow macaroni                   | 1 tablespoon chopped parsley    |
| 2 tablespoons corn oil                             | 1 teaspoon salt                 |
| 1 pound sausage (see note)                         | 1 teaspoon dried oregano leaves |
| 1 clove garlic, minced                             | ¼ teaspoon pepper               |

Rinse beans; cover with water in 4-quart saucepan and bring to boil. Remove from heat and let stand 1 hour. Add additional water to cover beans, if necessary. Bring to boil; cover and boil gently 1 hour or until beans are tender. Cook and drain macaroni according to package directions. Heat corn oil in large deep skillet over low heat. Add sausage and garlic. Cook about 15 minutes or until sausage is lightly browned. (Drain off some of the fat, if desired.) Add tomatoes, corn syrup, parsley, salt, oregano and pepper. Stir, breaking up tomatoes slightly. Bring to boil. Stir tomato mixture and macaroni into beans. Cover and simmer about 15 minutes. Makes 8 to 10 servings. Note: Use any type of sausage, such as sweet or hot Italian sausage, bulk or link pork sausage, chorizo or kielbasa.

## SOUTHERN BAKED BEANS

- |                                  |                        |
|----------------------------------|------------------------|
| 1 pound dried pea (navy) beans   | ¾ cup dark corn syrup  |
| 6 cups water                     | ½ cup chili sauce      |
| ¼ pound salt pork, diced (1 cup) | 1 teaspoon dry mustard |
| 1 cup chopped onion              | ¼ teaspoon pepper      |

Rinse beans, place in large saucepan and cover with water. Soak overnight. Cover; bring water to boil, simmer 1 hour or until beans are tender. Place beans in 3-quart bean pot or casserole. Stir in salt pork, onion, corn syrup, chili sauce, mustard and pepper. Cover and bake at 325 degrees 2 hours. Uncover and continue baking 30 to 45 minutes or until beans are browned and desired consistency. Makes 8 to 10 servings.

## FOUR-BEAN CASSEROLE

- |  |   |
|--|---|
| 2 cans (1 lb. each) pinto beans, drained | 4 large onions, peeled and separated into rings |
| 1 can (1 lb.) kidney beans, drained      | 1 cup dark corn syrup                           |
| 1 can (1 lb. 4 oz.) chick peas, drained  | ½ cup cider vinegar                             |
| 1 can (1 lb. 12 oz.) baked beans         | 1 teaspoon dry mustard                          |
| 8 slices bacon                           | ½ teaspoon garlic powder                        |

Mix pinto beans, kidney beans, chick peas and baked beans in 3-quart casserole. Cook bacon in large skillet over medium heat. Drain bacon on absorbent paper; reserve bacon fat. Add onion, corn syrup, vinegar, mustard and garlic powder to bacon fat in skillet. Bring to boil. Cover, reduce heat and simmer 20 minutes. Crumble bacon. Add onion mixture and bacon to beans. Cover and bake at 350 degrees 30 minutes, uncover and continue baking 1½ hours or until browned and desired thickness. Makes 12 servings.

## ON SOAKING BEANS

Dry beans and peas, with the exception of lentils and split peas, need to be soaked before cooking. There are two ways to do it: (1) Cover beans with water and soak overnight. (2) Cover beans with water and bring water to boil; boil 2 minutes. Remove pan from heat and let beans soak 1 hour. Although both soaking methods are called for in the recipes here, the techniques are interchangeable. In either case, do not throw away nutrients by draining off soaking water. Use it for cooking the beans.

## MAGIC BISCUITS

- |                           |                     |
|---------------------------|---------------------|
| 5 cups flour              | 4 tablespoons sugar |
| 1 teaspoon soda           | 1 cup shortening    |
| 1 teaspoon salt           | 2 pkgs. yeast       |
| 4 teaspoons baking powder | 2 cups buttermilk   |

Dissolve yeast in ¼ cup warm water. Sift flour, soda, salt, baking powder and sugar together. Cut in shortening with blender or 2 knives or fork. Add yeast and milk to dry mixture. Mix to stiff dough. Knead on floured board or table. Pinch off biscuits or roll and cut out. Allow to rise 10 minutes and bake at 425 degrees. The dough can be stored several days in the refrigerator and made into biscuits as desired, and allowed to rise 15-20 minutes before baking. For even greater convenience, the dough can be rolled, cut, placed on 2 baking sheets and frozen. The frozen biscuits can be stored several weeks in a tight, waterproof container. If the frozen biscuits are placed in the oven as soon as it is turned on, they will thaw and rise as the oven heats.

## STRAWBERRY SUPREME

- |                               |                                      |
|-------------------------------|--------------------------------------|
| 2 pkgs. strawberry gelatin    | 2 crushed bananas                    |
| 2 cups hot water              | 2 pkgs. (1 pint) frozen strawberries |
| 1 small can crushed pineapple | ½ pint sour cream                    |

Pour hot water over gelatin. Add crushed pineapple (do not drain), bananas and strawberries. Pour half of mixture into bowl and jell. Spread on sour cream. Add remainder of gelatin mixture and jell. Serve as salad or dessert.

## BASIC PIE FILLING

- |   |                         |
|---|-------------------------|
| 1 cup sugar   | 2 cups milk             |
| 5 tablespoons flour or cornstarch (1 use 3 T flour to 2 T cornstarch) | 3 egg yolks             |
| ½ teaspoon salt   | 1 teaspoon vanilla      |
|   | 4 tablespoons margarine |

Combine sugar, salt, flour and cornstarch in saucepan or double boiler. Add beaten egg yolks and milk. Cook until thickened: Add margarine and vanilla. Note: For the milk I prefer 1 cup evaporated milk and 1 cup water. This recipe can be varied by adding other ingredients. For Pineapple Pie add 1 small can drained crushed pineapple. For Banana Pie: Spread layer of pie filling over bottom of baked pie shell. Add a layer of sliced bananas and another layer of filling. Add a second layer of sliced bananas and the rest of the pie filling. Top with meringue and brown in oven. Coconut Pie: Add ½ cup Angel Flake or shredded coconut to filling. Place in pastry shell. Top with meringue. Sprinkle with coconut and brown in oven.

MERINGUE: Beat 3 egg whites and ½ teaspoon cream of tartar until stiff but not dry. Beat in 6 tablespoons sugar and 1 teaspoon vanilla.

## APPLE PIE

Melt ½ lb. (about 28) light-colored caramels with ½ cup evaporated milk or light cream over boiling water, stirring occasionally. Keep over hot water.

Sift together 3 cups flour, ¼ cup sugar, 1½ teaspoons salt. Cut in ½ cup butter until particles are fine. Blend ¼ cup cooking oil with 1 unbeaten egg and ¼ cup cold water until smooth and creamy. Add to dry ingredients. Stir until mixture holds together. Roll out on ungreased 18 x 14 inch sheet of heavy-duty foil. Place on cookie sheet. Place filling in pastry-lined pan. Drizzle caramel sauce in strips over apples. Spoon topping between caramel sauce. Sprinkle with ⅓ cup walnuts, chopped.

APPLE FILLING: 6 cups sliced apples, 1 cup sugar, ⅓ cup flour, 2 teaspoons grated lemon rind and 2 to 4 teaspoons lemon juice in bowl. NOTE: When apples are juicy, cook filling until thickened before turning into pastry-lined pan.

CREAM CHEESE TOPPING: Cream 1 cup (8-oz.) cream cheese, 1 unbeaten egg and ⅓ cup sugar until fluffy and smooth.

## CHOCOLATE CHIP CAKE

- |                                       |                         |
|---------------------------------------|-------------------------|
| 1 box white cake mix                  | ½ cup oil               |
| 1 3 oz. chocolate instant pudding mix | 4 eggs                  |
| 1 cup water                           | 1½ cups chocolate chips |

Mix mixes, water, oil and eggs. Beat well. Fold in chocolate chips. Bake in greased bundt pan at 350 degrees for 1 hour. Cool before turning out.

## FROSTING:

- |                       |                    |
|-----------------------|--------------------|
| Melt together         | 1 tablespoon oleo  |
| ½ cup chocolate chips | 3 tablespoons milk |

Pour over cake while hot

# Russel Terry all 'pumped up' about collection

(continued from page 25)

colors used and he carefully stripped away the layers of paint in hopes of determining the first color.

Most of the pumps originally were painted some shade of red, he found. The second most popular color was green.

One pump occupies a special place in his collection. It came from the home place of his wife's family, the Walter Zook farm northwest of Athens. (A cousin of Mrs. Terry,

Robert F. Zook, is a director of Menard Electric Cooperative and served as president of the Association of Illinois Electric Cooperative from 1969 to 1974.)

The pump was in use on the farm when Eloise's parents moved there just before 1920, Terry said. Just how old the pump is, he isn't exactly sure. (Terry has found that manufacturers cannot easily pinpoint the manufacturing date of their pumps, so he

has had a great deal of difficulty in establishing the ages of most of the collection.)

When the Zook family got running water, the pump was taken out and put in a garage loft. The Terrys located the old pump one day, and, although Terry isn't sure, he thinks it must have been purchased from Montgomery Ward or Sears, Roebuck.

Terry knows that pitcher pumps date to as early as 1848, the year that Goulds Pump Company, Seneca Falls, N. Y., began producing them. Of the 25 companies that once produced pitcher pumps, only 10 are still in business under their old names, Terry discovered as he attempted to gather information about his collection.

In his searching for pumps and information about them, Terry grew interested in meeting other collectors of pitcher pumps.

So far, though, he hasn't met any others—but not because he hasn't tried.

His problem may stem from the fact that there are few, if any, other collectors of pitcher pumps.

He sent photos and some information about his collection to a publication which specializes in antiques and collections. The material was published in October, and in the following two months he had no responses, leading him to believe his hobby is unique.

Terry has a reproduction of a turn-of-the-century mail-order catalog. In it, a brand-new pitcher pump lists for \$1. Today, he said, a mail-order pump is about \$25 new.

An employee of Springfield Electric Supply Company, Terry completed 25 years of service to that firm in December. The CB radio was the company's way of showing its appreciation for that service.

Terry has used newspapers, magazines, telephone and the mails to locate pumps. Now, with the CB, he can talk to others with "handles" in hopes of locating more of the handles he wants—handles with pumps attached.

**lane**  
CLEAR SPAN BUILDING CO.

FACTORY STEEL  
CLOSEOUT  
**LIMITED  
SUPPLY**  
ALL STEEL  
CLEAR SPAN BUILDING.



#### COMMERCIAL

30x42x8 ← PEAKED ROOF \$2,882  
40x54x8 ← FRAMED OPENING INC STEEL I BEAM CONSTR \$3,964

Eave height of buildings may be from 6' to 24'

#### AGRICULTURE

30x48x12 STEEL I BEAM CONSTRUCTION \$2,882  
40x48x14 DOUBLE SLOING DOOR INCLUDED ON ALL MODELS LESS THAN 100 FEET \$3,995  
40x72x14 \$4,995  
48x96x14 \$7,445  
60x108x15 ← PEAKED ROOF \$9,999

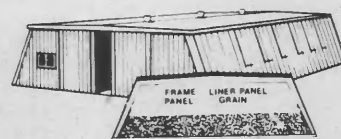
#### AGRICULTURE - COMMERCIAL

70x125x14 \$14,997

Buildings 24-100 wide, any length, any height, low profile or peak, straight, or slant W.

\*Snow and wind loading requirements in certain areas may affect advertised prices.

FACTORY LOCATIONS: PENNSYLVANIA, OHIO, INDIANA, IOWA, WISCONSIN · F.O.B.



Available in buildings 50 to 100 wide sliding doors up to 30 wide.



PLEASE CALL US FOR  
PRICE GUARANTEES

CALL (517) 263-8474  
COLLECT  
TOLL FREE [800] 248-0065  
IN MICH. [800] 292-0033

OR WRITE TO: LANE CLEAR SPAN BUILDING CO.  
P.O. BOX 952 ADRIAN, MICHIGAN 49221 8-1

Name \_\_\_\_\_  
Address \_\_\_\_\_  
City \_\_\_\_\_ State \_\_\_\_\_  
Telephone \_\_\_\_\_ Zip \_\_\_\_\_  
Date to Build \_\_\_\_\_ Size \_\_\_\_\_ x \_\_\_\_\_ x \_\_\_\_\_

# PRINTED PATTERNS

## TO ORDER PATTERNS:

Send \$1.30 (includes tax) in cash,  
check or money order for each pattern to:

Patterns, Illinois Rural Electric News  
P. O. Box 3787  
Springfield, Illinois 62708

(Please allow three weeks for delivery  
from New York.)



9027  
SIZES 8-18



9157  
4-10



9042  
7-15



9004  
SIZES 8-20



9111  
7-15



9188  
8-20



9383  
10½-18½



9120  
10½-20½



9045-  
10½-24½



9247  
TEEN  
10-16



9388  
34-50



9077  
12½-24½

- No. 9027 is cut in sizes 8, 10, 12, 14, 16, 18. Size 12 (bust 34) takes 2 7/8 yards 45-inch fabric.
- No. 9157 is cut in Child's sizes 4, 6, 8, 10. Size 6 jacket, pants 1 7/8 yards 45-inch fabric.
- No. 9042 is cut in Jr. Miss sizes 7, 9, 11, 13, 15. Size 11 (bust 33½) bolero, culottes 2¼ yards 45-inch; blouse 2.
- No. 9004 is cut in sizes 8, 10, 12, 14, 16, 18, 20. Size 12 (bust 34) takes 3 3/8 yards 45-inch fabric.
- No. 9111 is cut in Jr. Miss sizes 7, 9, 11, 13, 15. Size 11 (bust 33½) takes 2½ yards 60-inch fabric.
- No. 9188 is cut in sizes 8, 10, 12, 14, 16, 18, 20. Size 12 (bust 34) tunic, pants 2 7/8 yards 60-inch fabric.
- No. 9383 is cut in sizes 10½, 12½, 14½, 16½, 18½. Size 14½ (bust 37) takes 2 7/8 yards 60-inch fabric.
- No. 9120 is cut in sizes 10½, 12½, 14½, 16½, 18½, 20½. Size 14½ (bust 37) takes 2 3/8 yards 60-inch fabric.
- No. 9045 is cut in sizes 10½, 12½, 14½, 16½, 18½, 20½, 22½, 24½. Size 14½ (bust 37) top 1 yard 60-inch; pants 1 5/8 yards.
- No. 9247 is cut in Teen sizes 10, 12, 14, 16. Size 12 (bust 32) apron, pants 2¼ yards 45-inch; tee 1 3/8 yards 60-inch stretch knit.
- No. 9388 is cut in sizes 34, 36, 38, 40, 42, 44, 46, 48, 50. See pattern for yardages.
- No. 9077 is cut in sizes 12½, 14½, 16½, 18½, 20½, 22½, 24½. Size 14½ (bust 37) takes 2 5/8 yards 45-inch fabric.



### Auction Schools

REISCH WORLD WIDE COLLEGE OF AUCTIONEERING, INC. 41 years World's Largest. Terms soon. Free catalog. Mason City 17, Iowa.

### Of Interest To Women

NEW "SUGARLESS COOKBOOK" Diabetics? Overweight? Cakes, cookies, pies, jam, desserts. Also, recipes and information cooking without artificial sweeteners. \$3.35 each. 3 for \$9.00. Addie's, Drawer 5426-1 IE55, Eugene, Oregon 97405

SAUSAGE MAKERS, GREAT! RECIPES. Bologna, Frankfurters, Head Cheese, Summer, VENISON & Pork Sausage. \$1.00 Hamiltons, Box 652-41, New Ulm, Mn. 56073

COLDWATER DILLPICKLES! Can in minutes! No hot brine. Delicious, Crisp. Factory Secrets! Recipe \$1.00 Hamiltons, Box 652-41, New Ulm, Mn. 56073.

### Business Opportunities

EARN MONEY raising fishworms! Backyard, garage, basement. Free instructions, startling market facts! Oakhaven-99, Cedar Hill, Texas 75104.

\$20,000 Yearly Possible Raising Bullfrogs! Backyard Operations Discussed! Consultation Service Available! Exciting Free Details! Quaeator, Box 1410-B34, Costa Mesa, CA 92626

LIQUID WALLPAPER is a new means of interior design. Excellent return on small investment. Call Key Decor 618-654-2170 or write Key Decor, Box 44, Highland, IL 62249

### Hunting And Fishing

TRAPPERS, HUNTERS & DEALERS Another fur season is just around the corner. We need large quantities of fur. Send for Free Fur Price List, Market Report & 77-78 Supply Catalog. ED BAUER FUR CO., SMITHBORO, IL. 62284

### Miscellaneous

GOSPEL PIANISTS: Add chords, "runs," progressions, Twenty Lessons, "Playing Evangelistic Style Piano," \$5.95. Evangelical Music, IREA-1, Hawarden, Iowa 51023

COUNTRY LIVING NEEDS: Canning supplies, grist mills, corn cutters, coffee mills, kraut cutters, pumps, windmills, hardware, tools, buggies, harness, etc. All new goods in endless variety for man and beast. 255 page catalog \$3.00. Cumberland General Store, Dept. IJ, Rt. 3, Crossville, TN 38555.

WOODHEATERS: Ashley Automatics, Fishers, Johnsons, Shendoahs, Fire-Views, Antique Restored. Buy, Sell, Trade. WOODHEATER REVIVAL, 128 E. Vienna Street, Anna, Illinois 62906. 893-2938, 833-6843.

LOG CABIN building instructions. 304 pages...illustrated!! \$6.95 postpaid. Fireplace building instructions. 124 pages...illustrated!! \$4.95 postpaid. Satisfaction guaranteed. Glenn Smith Enterprises, Box 1513, Dept. F-69, Akron, Ohio 44309.

SPECIAL CRUISES \* from under five hundred dollars \* Canaries, Mediterranean, Baltic, Black Sea \* Group Opportunities \* Box 13486, Savannah 31406

### Farms, Real Estate

BIG...NEW...FREE...SPRING CATALOG! Over 2,500 top values in FARMS, RANCHES, ACREAGES, RECREATIONAL PROPERTIES, BUSINESSES, TOWN and COUNTRY HOMES coast to coast! UNITED FARM AGENCY, 2012-RN Tribune Tower, 435 North Michigan, Chicago, Ill. 60611.

### Farm Machinery, Equipment

TRENCHERS New and Used—\$750 and up. Ozark Trencher Sales 107 Troy Road, Collinsville, Ill. 62234. Phone 618 345-6262

STEEL TUBING AND PIPE. 1,000 tons in stock, all sizes and gauges. ALADDIN STEEL, Route 16, East, Gillespie, Ill. 217-839-2121.

### CHAIN SAW CHAIN

TOP QUALITY • TREMENDOUS SAVINGS!



Make a big cut in the cost of keeping your chain saw running well. Save to 40% on chain, guide bars, sprockets, files, engine parts, etc. All professional quality, guaranteed to please or money back with no quibbling. Write today for free catalog:

ZIP-PENN Inc. Dept. E66  
Box 6329 Erie, PA 16512

DECALS, NAMEPLATES, Badges, Trucksigns, Hard-hat labels, All kinds. Seton Nameplate Corp. Dept. IR, New Haven, Conn. 06505

### For Sale

Ashley and Shenandoah both thermostat central wood stoves. Send 25 cent stamps for Brochures. Treva Durbin, Ramsey, Ill. Route 2, 62080, Ph: 618 423-2667

WINCO STANDBY GENERATORS In stock PTO Units and Automatic Standby Units. Brochure available. For information call: Tom Bauer, R. R. 2, Gillespie 62033, 618 362-6441

### Baby Chicks

Poultry For Sale CHICKS: Regular and Fancy. Bantams. Turkeys, Ducklings, Goslings, Guineas, Incubators. Brochure 50 cents. Cackle Hatchery, Lebanon, Mo. 65536



ren ads don't cost— they pay.

ORDER FORM Illinois rural electric news

Please enter my name as a subscriber to IREN magazine. I am enclosing \$2 for each one-year subscription.

name

address

zip

buy a subscription to the IREN for a friend!



**ASTRONAUT GORDON COOPER ANNOUNCES:**

**Now! CONVERT AIR INTO ENERGY—  
EXPLODE IT LIKE FUEL—and  
GET up to 7 MORE MILES PER GALLON!**

Yes, save up to \$18 a month, save up to 350 gallons of gas each year, save up to 2 full gallons every 60 minutes you drive — ALL FREE — because air costs you not one single penny!

Proven in the labs — proven on the road — proven by California university scientists: How it is now possible to convert air into energy 2,000 times a minute — boost gasoline mileage by as much as 7 more miles per gallon . . . actually drive up to 500 miles on a single tank of gas . . . all without changing a single part in your car!  
The result: Instead of filling your gas tank each and every week . . . your car's engine now converts ordinary air into piston-driving power . . . explodes it just like a second source of FREE fuel . . . and saves you up to 350 gallons of gas, (over \$200 worth), each and every year!



by Col. Gordon Cooper, Astronaut, Engineer, Research Advisor. Brace yourself, Mr. Car-owner! Get set — for this incredible release — this "bombshell" announcement every automobile driver has been waiting for. News of a fantastic new era in automotive history. An era of mileage miracles where you can take even a 10-year old car and blaze across 6 states of the union on a single tank of gas — drive from New York to Chicago on less than 2 tankfuls — actually squeeze out "impossible" mileage figures of as much as 31, 35, even 47% more miles a gallon . . . as reported by actual "in-traffic" usage runs. Yes, save up to 30 gallons of gas each month, up to 350 gallons of gas each year, save up to \$200 OR MORE on yearly fuel bills — step up gasoline mileage by as much as 5, 6, even 7 MORE MILES PER GALLON. All by simply converting ordinary air into a second source of high-powered energy . . . with just a simple, 60-second change that even a schoolboy can do!

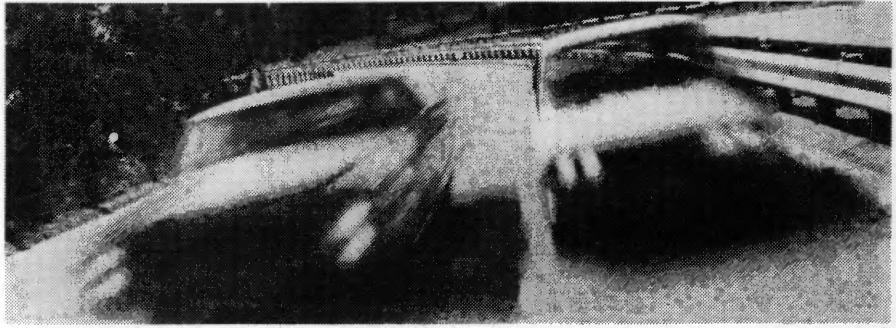
**I'VE ACTUALLY SEEN A CAR WITH OVER 200,000 MILES BOOST GASOLINE MILEAGE BY 7 MORE MILES PER GALLON — WITH JUST THIS ONE 60-SECOND CHANGE!**

Yes, from this day on you are going to do to your car what automotive experts now do to their cars. You are going to do to your car what California university researchers have proven time and time again. You are going to take ordinary air — the very same air you breathe — air that costs you absolutely nothing — and you are going to convert that air into a source of piston-driving power for your car . . . get such staggering boosts in mileage, horsepower and performance, you may only have to: **FILL YOUR GAS TANK AS LITTLE AS ONCE A MONTH!** Here's how:

**STOP RUNNING YOUR CAR ON 12¢ EXPLOSIONS!**

Right now your car runs on a very simple principle. You step on the gas-pedal and pump an air-gas mixture from your carburetor into your cylinders. There, a spark explodes it. This air-gas explosion is the lifeblood of your car. Only there's one trouble. Even though you invest as much as 65¢ to 70¢ for each gallon of gas . . . all you get in return is as little as a puny 12¢ explosion . . . a mere 12¢ worth of usable power. Because most of that air-gas mixture never fully explodes . . . in fact, never even warms up.

And if you want to prove this to yourself, simply take a wad of cotton, hold it next to your exhaust pipe and idle your engine. What happens to that cotton in the next 2 minutes will absolutely shock you. Because in less than 2 minutes that cotton ball will be damp and clammy from wasted, unused gas. Why this incredible waste?



**THIS 1968 CADILLAC GETS BETTER GAS MILEAGE THAN THIS TINY FOREIGN "ECONOMY" CAR . . . SO CAN YOUR CAR TOO!** What's the secret? AIR! That's right . . . Now thanks to an amazing automotive discovery you can actually convert air into piston-driving power, so that instead of relying on gas alone you can simply step on the accelerator and turn air into energy while you drive. For documented proof of just how this wondrous "Air-to-Energy" discovery can save you up to \$200 in gas bills in the next 12 months alone . . . read the rest of this page. See no-risk trial offer below. (Test performed by leading research University).

**WHAT DO YOU EXPECT FROM A MACHINE THAT'S GOT THE POWER OF A GIANT BUT THE MIND OF AN INFANT!**

Because as any automotive engineer will tell you, your carburetor, (which was invented in 1901 and hasn't been improved since then), is nothing more than an old-fashioned pump without a mind, without a brain. It cannot think. It cannot regulate itself to varying driving speeds. It only knows one thing. Blindly pump — pump — pump a steady flow of gas all the time . . . BUT WITHOUT EVER ADJUSTING THE RIGHT AMOUNT OF AIR. Which means, every time you step on that gas-pedal . . . be it at idle or 70 miles per hour . . . your "midget-mind" carburetor pumps and force-feeds your engine with up to 4 TIMES AS MUCH GASOLINE AS IT ACTUALLY NEEDS . . . BUT STARVES YOUR ENGINE OF THE OXYGEN-RICH AIR so vital to explode all that gasoline. The result of this "over-drowning" with too much gas and too little air? A difference of as much as 2 GALLONS OF GAS EVERY 60 MINUTES YOU DRIVE! (or in plain dollars and cents a difference of as much as \$1.50 a day — \$10.00 a week — \$300.00 to \$500.00 a year).

**BUT WHAT A DIFFERENT STORY IF SOMEHOW YOUR ENGINE COULD THINK!**

In other words, right now there is simply no way for your present "no-brain" engine to effectively meter the right amount of air coming into your engine . . . and convert the oxygen in that air into a super-blazing source of extra power . . . by effectively exploding all the fuel fed into your cylinders (the same way jet airliners are now economy-designed to scoop in air with their giant suction-fan engines).

**BUT NOW — YOU GET SO MANY FREE, EXTRA MILES YOU CAN ACTUALLY SAVE UP TO 2 GALLONS OF GAS EVERY HOUR YOU DRIVE!**

But suppose that automotive experts told you that NOW, without changing a single part in your engine . . . by simply adding one simple attachment to your car . . . the very same wonder-invention that has been tested in Governmental research labs . . . you could add a "brain" to your engine . . . a mechanical genius that would automatically feed to your engine the right amount of air. Even more significant, suppose these same automotive experts showed you laboratory PROOF . . . PROOF that has been filed with both State and Federal Government agencies of how this wondrous new invention actually helps CONVERT THE OXYGEN IN THAT AIR INTO RAW, BLAZING POWER PLUS FREE EXTRA MILES PER GALLON mile after mile! Why, do you realize what this breakthrough development means?

**NOW! FINALLY POSSIBLE! UP TO ALMOST TWICE THE MILEAGE ON NOT A SINGLE EXTRA DROP OF GAS!**

It means that from this day on you can actually take ordinary air . . . and convert it to a second source of power for your car. Yes, gallons and gallons of air suddenly turned into thousands of miles of FREE driving power. Air that costs you absolutely nothing, automatically converted into SUPER BLAZING HORSEPOWER day in, day out for the life of your car! Why now you'll save up to \$18 a month on your gas bills. Now you'll drive for hundreds of miles at a time and swear to yourself the needle on your gas gauge must be stuck . . . and you'll get more power, more smooth and quiet performance than ever before thanks to this air-to-energy discovery!

**NOW! CONVERT AIR INTO ENERGY — GET FOREIGN CAR ECONOMY — EVEN FROM BIG LUXURY SEDANS — MORE MILES PER GALLON THAN YOU EVER DREAMED POSSIBLE!**

The name of this breakthrough development that finally makes it possible for you to effectively convert air into energy is the "TURBO-DYNE ENERGY CHAMBER". It is the very same "air-converter" that has been tested and proven in leading university labs. Tested and proven by fleet owners, industrial giants, consumers and heads of transportation departments where it racked up incredible mileage savings of as much as 40% more miles per gallon!

So, if you are sick and tired of wasting hundreds of gallons of gasoline each year . . . if you would like to stop this ridiculous dollar-drain ONCE AND FOR ALL by simply harnessing the power in ordinary air and saving hundreds of dollars doing it . . . then take advantage of this exciting no-risk trial offer:

**COSTS LESS THAN A TANKFUL OF GAS — PAYS FOR ITSELF IN LESS THAN 30 DAYS!**

Most exciting of all, the price of the TURBO-DYNE ENERGY CHAMBER is not the \$40 or \$50 you might expect for a precision air-converter but only \$12.95 . . . less than the cost of a tankful of gas. And you'll easily save as much as 10 times that price in just the first few months of use.

**REMEMBER — YOU PROVE IT YOURSELF ENTIRELY AT OUR RISK!**

Yes, you must save up to \$18 worth of gas each and every month — save up to \$200 in fuel each year — you must get at least up to 7 MORE MILES PER GALLON — or your money refunded in full (except for postage and handling, of course).

© 1977 American Consumer, Inc., Caroline Road, Phila., PA 19176

**LOOK HOW EASY IT IS!**

All you do is simply slip the TURBO-DYNE ENERGY CHAMBER onto the line leading from your engine to your carburetor and simply screw into place. (As simple as screwing in a lightbulb). Why it's so easy and so quick that even a schoolboy can do it. In fact, even if you never lifted the hood of your car before it takes but 60 seconds to install. (Naturally, easy 1 — 2 — 3 step-by-step instructions accompany each unit). And since it is a precision instrument, there are no special adjustments for you to make. They've already been made for you at the factory. Total time to install — 60 seconds. Total savings on gas: up to \$200 a year.

**SPECIAL NOTE:** The "TURBO-DYNE ENERGY CHAMBER" — is not for use on fuel injected, diesel or super-charged cars (such as Mercedes, Volvo and Maserrati racing car).

MAIL NO-RISK COUPON TODAY

Amount enclosed \$\_\_\_\_\_ PA residents add 6% sales tax. Check or money order, no CODs please.

CHARGE IT: (check one) Exp. Date \_\_\_\_\_

BankAmericard/Visa  American Express

Master Charge Bank Number \_\_\_\_\_

Credit Card # \_\_\_\_\_

Name \_\_\_\_\_

Address \_\_\_\_\_ Apt. # \_\_\_\_\_

City \_\_\_\_\_ State \_\_\_\_\_ Zip \_\_\_\_\_

Make of Car \_\_\_\_\_ Year \_\_\_\_\_

Make of Second Car \_\_\_\_\_ Year \_\_\_\_\_

**CHECK OFFER DESIRED**

1 TURBO-DYNE ENERGY CHAMBER — Only \$12.95 plus 75¢ for postage and handling.

SPECIAL MONEY SAVING OFFER: Order 2, one for yourself, one for a friend — Only \$21.95 plus \$1 for postage and handling. (A savings of \$3.95).

3760-006

Div. of American Consumer, Inc.

Foliage, Flowers, and Fruit . . . All In One!

# HANGING STRAWBERRY BASKET \$2.98



Indoors or outdoors, new garden sensation produces numerous clusters of firm, sweet, juicy strawberries. Yes, you can pick them right off the vine, without even bending over. Very tasty, these are the luscious, delectable strawberries with the light red color. But as tasty as they are, it's their vivid waterfall of rolling color as they tumble down from the hanging basket that really steals the show!

**Blooms Outdoors In Summer, Indoors In Winter . . . Year 'Round Shower of Color!**

The lustrous rich green foliage and the delicate white blossoms, contrasted against the light red fruit, makes this the most attractive of all hanging baskets. Display on porch or patio during warm weather, move indoors for winter. You get three healthy hardy, everbearing strawberry plants, complete with hanging basket. It's all in one . . . foliage, flowers, and fruit!

## MORE "FRIEND MAKING" BARGAIN OFFERS!



### TRAILING GARDENIA

COMPLETE WITH HANGING BASKET **\$2.98**

Breathtakingly beautiful, its large creamy white blossoms gracefully adorn the evergreen foliage that cascades down and around the hanging basket. Blooms for as long as nine months. May be displayed outdoors during warm summer months. 2 1/2" pot size plant. Very fragrant.



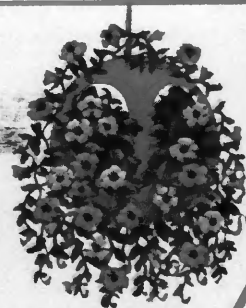
### CHRISTMAS CACTUS

COMPLETE WITH HANGING BASKET **\$2.98**

Outstanding showpiece highlights any room as its brilliantly colorful blossoms shower down from the hanging basket. Protruding from the tips of the shiny green foliage are exquisite fuchsia-colored blossoms . . . dozens per plant, blooming in succession, wave after glorious wave. You've never seen an indoor plant so gay and showy. You get 2" pot size plants, already growing.

### JUNGLE BALL — \$2.98

You've never seen anything like this bright orange Jungle Ball, featuring masses of flower-laden Black-Eyed Susan Vines (Thunbergia), creeping out of the circular openings on the sides. Blossoms range from orange to yellow, vividly colorful with black centers. As the blossoming vines progress slowly downward from the Jungle Ball, they also creep up the supporting cord, creating the illusion of a floating garden! We ship the orange Jungle Ball, supporting cord, and seeds for the lovely Black-Eyed Susan planting. Truly a spectacular sight.



MICHIGAN BULB CO., Dept. AM-144, Grand Rapids Mich. 49550

## SATISFACTION GUARANTEED — PROMPT DELIVERY — FREE PLANT FOOD!

Every selection on this page is guaranteed to satisfy on arrival or you may return within 15 days for full refund. Each item will be well packed, tagged for easy identification, promptly shipped for arrival in healthy, vigorous condition. Furthermore, any selection that doesn't flourish and thrive, replacement is free (3 year limit). Order before December 15 and receive FREE of extra cost one packet of Soluble Plant Food . . . promotes faster growth, bigger blooms, and more of them. Rush your order today!

### MAIL MONEY-SAVING COUPON TODAY

MICHIGAN BULB CO., Dept. AM-144,  
1950 Waldorf, Grand Rapids, Mich. 49550

Please send order as checked below, plus FREE Plant Food as indicated. All items are covered by your NO FAULT GUARANTEE.

HOW MANY	CAT. NO.	ITEM	COST
	727	Hanging Strawberry Basket, \$2.98 (2 for \$5.75)	
	501	Trailing Gardenia, \$2.98 (2 for \$5.75)	
	518	Christmas Cactus, \$2.98 (2 for \$5.75)	
	511	Jungle Ball, \$2.98 (2 for \$5.75)	
1	FREE	Packet Soluble Plant Food if ordered by Dec. 15	0.00

Remittance enclosed, plus 90¢ towards postage and handling. Ship postpaid. **TOTAL \$ .90**

Send C.O.D. plus postage and charges. **GRAND TOTAL \$**

PRINT NAME \_\_\_\_\_

ADDRESS \_\_\_\_\_

CITY \_\_\_\_\_ STATE \_\_\_\_\_ ZIP \_\_\_\_\_