

**illinois**  
**ren**

**rural electric news**  
September, 1975

# LONG HOURS GREASE PROTECTION

## what it means to your equipment

JT-6 Multi-Purpose Grease provides the best protection you can give your equipment. JT-6 will remain on a bearing surface longer, increase lubrication intervals, and prolong bearing life. This patented polymer grease grew out of fifty years of grease making experience, and is available in quantities ranging from grease cartridges through 400 pound drums.



*JT-6 is from a large family of  
MYSTIK FRICTION FIGHTERS*

*from the EXPERIENCED people*  
**Cato Oil and Grease Co.**  
Oklahoma City, Okla. 73126



A Subsidiary of  
KERR-McGEE CORPORATION

September, 1975

Vol. 33, No. 5

Published by  
Association of Illinois Electric  
Cooperatives

**GORDON M. OLSEN**  
*Managing Editor*

**JIM BASS,**

**JIM POTTORF,**  
*Associate Editors*

In this issue . . .

#### ARTICLES

Energy Forum	4 & 5
Farmer On The Mound	10, 11 & 12
Goodfield Market	14
Southern Illinois Air Show	24 & 25

#### FEATURES

Dinner for Two	26
Grape Goodies	27
Patterns	28
Trading Post	30

**COVER:** Ray "Bud" Ripple-  
meyer, pitching coach for the  
Philadelphia Phillies, goes into  
his windup. See story starting  
on page 10.

ILLINOIS R.E.N. RURAL ELECTRIC NEWS  
is the official monthly publication of the  
Association of Illinois Electric Cooperatives,  
U.S. Route 66 & Hoecheater Road, Spring-  
field, Illinois 62708.

Subscription price \$2.00 per year. Ad-  
vertising and editorial inquiries should be  
directed to the Illinois Rural Electric News,  
P.O. Box 3787, Springfield, Illinois 62708.  
National advertising representative: South-  
west Doolies, 360 N. Michigan Ave., Chi-  
cago, Illinois. Member, Illinois Press As-  
sociation.

POSTMASTER: In using Form 3579, ad-  
dress to Illinois Rural Electric News, P.O.  
Box 3787, Springfield, Illinois 62708.

Second Class postage paid at Springfield,  
Illinois and at additional mailing offices.

# illinois rural electric news

## The Burden of Proof

Few domestic issues have gotten more media space than energy. That is as it should be, because few things are as important to the future or touch the American public's way of life as much as energy.

Unfortunately, there tends to be a correlation between how loud and long one speaks and how much the public believes of what is said. The more vocal people tend to be those who are believed—if only because their volume drowns out the other side. It also drowns out the truth at times.

This has happened in the area of nuclear energy to a large extent.

Opponents of nuclear energy have taken the vocal, but easy, way out. At least, it is much easier to take the negative side of an issue and appeal to mass hysteria than it is to present a fair case based on facts.

The only thing opponents of nuclear energy have forgotten is a basic tenet of our legal system—the burden of proof is never on the defense. It is not the electric industry which must prove nuclear energy's worth, it is those who are attacking it that must prove—and not merely assert—it is bad or dangerous.

The answer of these people has always been that when one is dealing with human life the normal burden of proof is "inoperative." Yet they can point to no deaths due to nuclear related accidents. Where is the casualty list? Deaths and injuries won't be cited by those opposing nuclear power because they don't exist. Elaborate precautions are taken by the electric industry to maintain an exemplary safety record.

Environmentalists have always assumed the nuclear plants were harming the environment and have forced the electric industry on the defensive to prove they weren't. Why not shift the burden of proof back to the environmentalists for once and let them prove their allegations? And ask for facts, not rhetoric.

And also, why not ask them what the cost to the environment is when placed against not having sufficient electric power. Nuclear energy is not only a future source of electric power, it is THE source. Until technology catches up, there is nothing to replace the dwindling supplies of fossil fuels. But you will undoubtedly be told by environmentalists that adequate power is not their concern.

The Ralph Naders of the world are impressive. But a glib tongue and an authoritarian manner historically have carried more force than truth. Even an unfounded statement by someone like Nader carries more weight and is more credible to many people than all of the charts, facts and figures an electric company official can present regardless whether the person making the sweeping condemnation can back his allegations up. Too often, he doesn't have to prove them, it's enough he said them.

The opponents of nuclear energy have surrounded themselves with a cloak of words tied neatly together to form an indictment of anything nuclear. And they have tried to foist the burden of proof on the electric industry. If the consumer-public took a closer look at the facts and paid less attention to the volume of the rhetoric, the cloak of words would quickly become transparent.

And the electric utilities would no longer bear the burden of proof.

“One of the most crucial aspects of the nuclear controversy is summed up in the question, ‘Is Nuclear Necessary?’”, Lawrence O’Donnell, director of Regional Government Relations for General Atomic Company, said recently at a meeting of the National Electric Cooperative Editorial Association held in Wisconsin.

O’Donnell was part of a three-man panel with Paul Turner, vice president of the Atomic Industrial Forum and George Gleason, vice president and general counsel of the American Nuclear Energy Council.

Gleason spoke on legal licensing and legislative considerations and Turner on nuclear power information sources, while O’Donnell, with the help of the others, presented “Nuclear Power—Issues and Answers.”

O’Donnell first gave a little background to our energy problem and talked about the near term crisis which we all experienced in 1973-74—when the sheiks turned off the oil and we realized for the first time we were dependent to a great extent on Middle East oil.

“Our near term need is to achieve U.S. energy independence and in doing that conservation is one of our trump cards,” O’Donnell said.

“What had happened went almost unnoticed; that is, in 1972 we were no longer able to meet our petroleum demands from our American resource base. It was at that point we crossed the line where we were using more oil than we were producing.

“There is certainly plenty of oil in the world today. . . . But in 1985 or 1990, what happened to the U.S. in 1972, will start to happen on a worldwide scale. . . . At that time we simply have to have new energy sources and technology to meet expected growth.”

He said currently the energy demands are increasing at about eight percent per year and presented some facts and figures on the energy

**“We need to bring on line 30 to 35 new electric plants a year . . . we’re not doing that.”**

*Larry O’Donnell  
General Atomic Company*

problem which came out of a study made by Jack Bridges, formerly a consultant for the Joint Committee on Atomic Energy.

“In looking at the U.S. total energy consumption in oil equivalent barrels a day we used 16 million barrels a day (MBD) in 1950. By 1960 the total was up to 21 MBD and by 1970 the figure was 32 MBD—a pretty healthy growth. And then in 1973, the figure had risen to 36 MBD.”

O’Donnell said if we follow most of the growth projections that people are making, we can forecast by the year 2000 the U. S. energy demand will be 95 MBD.

“Now the question is how are we going to meet those demands,” O’Donnell said, as he began to illustrate the energy future.

“If we double the number of miles per gallon we are getting from our entire auto and truck fleet we could reduce the demand by five MBD and get by with 90 instead of 95 MBD.

“In the industrial sector if we increased energy efficiency very substantially for an average of 10 to 15 percent we would pick up another four MBD. That is both residential and commercial. This leaves a supply problem of 84 MBD after making a pretty good conservation effort.

“If we hold oil imports to 15 percent of our total requirements that would mean we would need 12



*Nuclear Energy Panel*

MBD from imports. And if we could increase oil production from the lower 48 states, which means going out on the continental shelf on both the Pacific and Atlantic coasts, we could get another 12 MBD, quite an increase over current production.

“If we get lucky in Alaska we can get five MBD, but that means another pipeline and almost doubling Alaskan production. Then there is another three MBD we can get from shale, although we are not getting any now and that will mean a tremendous undertaking. Maybe by the year 2000 we can get that much production, but it will have tremendous land and water use impacts in the Montana and Wyoming areas.

“And then let’s really rely on coal and say we have 17 MBD of energy from coal. Of course, that means tripling our current strip mining and

*(Continued on page 6)*





*Dr. Richard Briceland*

**"I** find there exists an adversary relationship between the environmental people and the electric power industry. I'm never surprised when I hear this, but it always disturbs me," Dr. Richard Briceland, director of the Illinois Environmental Protection Agency (EPA) said, speaking before a meeting of officers and directors of Western Illinois Power Cooperative recently in Jacksonville

He continued by saying this relationship disturbed him both professionally and from the role of the job he now has with the EPA. "We both had better have the same objectives and that is to serve the public," Briceland said. "I think the idea so often promulgated that we can have either adequate power or a clean environment is a very contrived idea. There is no reason in the world we can't have both."

Briceland said long before the present energy crisis leaders in the

**"Environmental policies didn't create the energy crisis . . . changing them won't solve it."**

*Dr. Richard Briceland  
Director, Illinois EPA*

field of environment, energy and economics were trying to get out of the mold where all policies were being formulated separately and independently.

"They were trying to see if there wasn't some middle ground where all these could be brought together. But after the fuel crisis everyone ran for cover and most fell back in the same old mold.

"It was then people started asking the question . . . Does an environmental program mean less jobs? Or does it mean a bad situation as far as the energy problems?"

Briceland answered these questions with what he called a truism: "Environmental policies didn't create the energy shortage and changing these environmental policies is not going to solve the energy problems.

"Just think about the compatibility of environmental goals and how mass transit would cut down on auto exhaust pollution and fuel usage. In another area, take the recycling of aluminum. It takes 30 times more energy to produce a pound of aluminum from virgin ore than it does from recycled cans.

"There are payoffs in both camps and I think the areas where these goals compliment each other are much more significant than the areas where they conflict.

"Looking back at the passing of the Clean Air Act of 1970, I think the potential conflicts between the

Act and the energy industry became fully recognized in 1972.

"It was discovered that everyone intended to meet the clean air goals by using natural gas, but when the needs were totaled, collectively, there wasn't enough to go around. This was also 18 months before the mideast situation.

"We have a particular problem here in Illinois, a state rich in a high sulfur coal. And that coal plays a significant part in the state's economy."

A large portion of the coal is consumed in three major metropolitan communities, East St. Louis, Chicago and Peoria, Briceland said. These are also the areas where we have the worst and most significant pollution problems.

He pointed out several areas where the EPA is trying to deal simultaneously with energy and environmental problems.

He first pointed out the new source performance standards which applies to power plants constructed after August 17, 1971. These plants are limited to an emission of 1.2 pounds of sulfur dioxide per million BTU's of thermal energy produced.

"On the other hand," Briceland said, "the old source performance standards are where the state EPA has a great deal more flexibility in terms of how it deals with emission levels and meeting ambient air quality levels."

He said Illinois has a two-tier type of emission standards. For metropolitan areas, the standard is 1.8 pounds per million BTU's of thermal energy. In rural areas, the emission standards are six pounds per million BTU's of thermal energy. "Even at that limit the EPA has gone before the Pollution Control Board (PCB) and ask for changes to make it more compatible with the real local situation," Briceland said.

Briceland then went into how the EPA has tried to deal in a fair and

*(Continued on page 20)*

## Nuclear Energy Now

(Continued from page 4)

increasing underground mining 50 percent. Between coal and shale, we will be consuming 100,000 acres of land a year with this kind of program.

"From natural gas we may be able to get seven MBD of energy, which gives us 44 MBD from domestic production and 12 MBD from imports, a total of 56 MBD to meet our energy demands.

"Let's also assume, over and above that figure we can double the hydro capacity in this country, which will give us another one MBD. But that is equal to building 200 Hoover Dams in the next 25 years. Let us also assume that we can get another three MBD out of solar and geothermal and that's about as much as anyone can imagine. With these four MBD, the total energy availability comes to 60 MBD and subtracted from the needed 84 MBD leaves 24 MBD to be met by nuclear power.

"Now you can argue that the 95 MBD is high and you can argue that each one of the number may be high or out of proportion," said O'Donnell, "but no matter how you mix and match them you end with a very large share of that energy demand which must come from somewhere else and that is nuclear.

"What does that mean? Well, if we are to accept the numbers, in terms of nuclear power, it means by the year 2000 we'll have about 1000 to 1200 nuclear plants of 1000 megawatt capacity on lines in the U. S.," O'Donnell said. "Over the next 25 years we'll have to bring on line 30 to 35 plants a year, which is approximately one every 10 days.

"Now we are not doing that. We are not doing any of these things really," O'Donnell said, "so all the shortfalls you see in any of these areas tend to increase the pressures of other areas."

He said the U. S. right now is in a position of technological leadership and these are things we can do, if we get about the business of doing them.

ILLINOIS CROP IMPROVEMENT ASSOC., INC.  
508 South Broadway Urbana, Illinois 61801



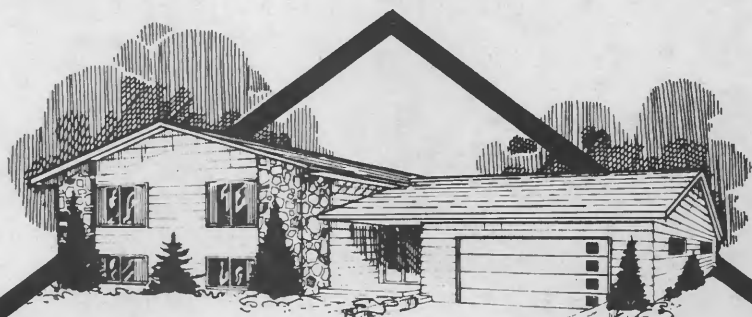
it  
pays  
to plant



Since the Illinois 5 Acre Soybean Yield Contest started in 1964, every top yield winner used Illinois Grown Certified Seed. That is ten winners in a row.

More than 500 farmers have participated in the contest. Fields planted with certified soybean seed averaged almost two bushels more per acre than entries using the best noncertified seed available.

There is a limited supply of certified soybean seed, so be sure you order your supply early.



AGAIN IN '75...

The difference between President Homes and other Pre-Cut homes is...

# P.M.F.S.

**PRICE:** We're still giving you the most home for your money. Ask our thousands of satisfied buyers. You always get the lowest possible prices from President!

**MATERIALS:** President Homes are constructed of top quality, nationally known materials. You're going to live in your home a long time; you need a builder that will never compromise on quality — President!

**FINANCING:** These days, low prices aren't enough — we offer immediate, low-cost financing for a home you can own free and clear in 10 years!

**SERVICE:** Your home will be built by experienced craftsmen—home construction specialists who quickly turn your plans or one of ours into a quality home you'll be proud to own!

**P.M.F.S. - PRESIDENT HOMES MAKES THE DIFFERENCE!**

Learn how you can save \$1,000's on your new home. Send for full color catalog TO:  
**PRESIDENT HOMES,**  
4808 N. LILAC DR.,  
MINNEAPOLIS, MINN.  
55429 (612) 537-3622

☐ I own a lot ☐ I can get a lot

NAME \_\_\_\_\_  
ADDRESS \_\_\_\_\_  
TOWN \_\_\_\_\_ STATE \_\_\_\_\_  
ZIP \_\_\_\_\_ PHONE \_\_\_\_\_  
We would like to be in our new home by \_\_\_\_\_ IL-30

WRITE FOR YOUR LOCAL ILLINOIS  
PRESIDENT HOMES REPRESENTATIVE

# PRESIDENT HOMES

CUSTOM BUILT PRE-CUT HOMES ... OUR ONLY BUSINESS

**World Famous Scissors Offer  
From The Cutlery Center of The World!**

# **6-piece SCISSOR SET**

## **GOLD Electro Plated**



In Europe master craftsmen still take pride in creating precision instruments, and these magnificent matched scissors are typical of their work. Imagine an imported matched set each made of forged steel with blades double plated in hard lustrous nickel and double polished. Permanent stay sharp blades. All handles in Electro-Plated burnished gold. Here's a lifetime of sewing and grooming pleasure with the correct scissors for every occasion. You'll never have to fumble around or use the wrong pair of scissors again. You get a 7" all purpose scissors, 5" sewing shears, rounded tip grooming scissors, curved blade manicure-pedicure scissors, 3 1/2" cuticle scissors and keen point embroidery scissors. Each pair is unconditionally guaranteed. Yes, you've seen these scissors advertised nationally before and now you can own them at spectacular savings. Order them now. 6-Piece Scissor Set. Only \$5.99

**JAY NORRIS** CORP.

25 W. Merrick Rd., Dept. CBB-9, Freeport, N.Y. 11521  
Serving Satisfied Customers for over 25 Years

**TRY THIS SCISSOR SET FOR 90 DAYS AT OUR RISK.  
IF NOT COMPLETELY SATISFIED, RETURN FOR REFUND.**

**Jay Norris Corp., 25 W. Merrick Rd.  
Dept. CBB-9 Freeport, N.Y. 11521**

Please rush me \_\_\_\_\_ 6-Piece Scissor Set(s)  
At \$5.99 plus 80c shipping and handling.

☐ **SAVE** Order TWO sets for only \$10.99 plus \$1.00 shipping and handling.

☐ **Save More!** Order Four Sets for only \$19.99 plus \$1.50 shipping and handling.

Enclosed is ☐ check or ☐ money order for

\$\_\_\_\_\_. Sorry, no C.O.D.'s.  
(N.Y. residents add sales tax.)

(Please Print)

**NAME** \_\_\_\_\_

**ADDRESS** \_\_\_\_\_

**CITY** \_\_\_\_\_

**STATE** \_\_\_\_\_ **ZIP** \_\_\_\_\_

© Jay Norris Corp., 1975



# "Illinois Fall Enrollment

**AVAILABLE TO  
ELECTRIC COOPERATIVE MEMBERS ONLY!**

## Daily Hospital Cash

**PUTS CASH IN YOUR HANDS WHEN HOSPITALIZED**

Here are some of the Rural Electric Cooperatives who have made "Co-op Insurance Fund" HOSPITAL PROTECTION available to their Members (Purely a NON-PROFIT Service on the part of the Co-op). Designed to use the buying power of millions of Rural Electric Members—to help assure dependable protection at low GROUP rates. Also shown are some of the Rural Electric publications in which C.I.F. advertised its membership "Group" Insurance Plan.

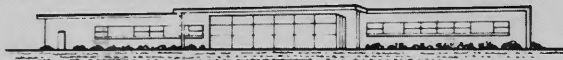
The "Co-op Insurance Fund" Hospital Protection Plan is insured by an old reliable insurance company in the Health Insurance field for over 88 years — founded in 1886 — with over three billion dollars (\$3,000,000,000.00) of life insurance in force. Licensed in Illinois.

Advertised in ...  
AREA MAGAZINE (ALABAMA)



**Jefferson  
Electric Membership Corporation**

Northwestern Rural Electric Co-operative Association, Inc.



Advertised in ...  
WISCONSIN REC NEWS

Advertised in ...  
ILLINOIS RURAL ELECTRIC NEWS

Advertised in ...  
KANSAS COUNTRY LIVING

**TRI-COUNTY ELECTRIC COOPERATIVE, INC.**  
*Owned By Those We Serve*



Advertised in ...  
NODAWAY WORTH ELECTRIC COOPERATIVE, INC.

**NO OTHER HOSPITAL INSURANCE SERVICE** — has ever been so widely introduced to so many members by so many Rural Electric Cooperatives. The service represents an expression of their concern for the health and welfare of their members.

**DEPENDABLE ... HONESTLY DESCRIBED ...** "C.I.F." Hospital Protection provides High Benefits. "Group" Rates through your membership. Fair and prompt claims service. It's the first Group Hospital Plan especially developed for rural electric cooperative members.

Owned by those it serves  
**Horry Electric Cooperative, Inc.**

Advertised in ...  
RURAL ELECTRIC NEBRASKAN

*Owned by those it serves*  
**SANTEE ELECTRIC COOPERATIVE**

Advertised in ...  
CAROLINA COUNTRY



**The Central Georgia  
Electric Membership Corporation**



Advertised in ...  
LIVING IN SOUTH CAROLINA  
**Three Notch  
Electric Membership Corporation**

Advertised in ...  
RURAL LIVING (VIRGINIA)

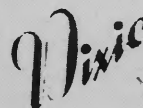


**Blue Ridge Mountain  
Electric Membership Corporation**

Advertised in ...  
MONTANA RURAL ELECTRIC NEWS



**Walton  
Electric Membership Corporation**

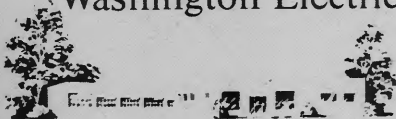


**ELECTRIC POWER ASSOCIATION  
LAUREL MISSISSIPPI**

Advertised in ...  
RURAL ELECTRIC MISSOURIAN

Advertised in ...  
PENN LINES

**Washington Electric Co-operative, inc.**



Advertised in ...  
OKLAHOMA RURAL NEWS

Advertised in ...  
RURAL GEORGIA



**Mitchell  
Electric Membership Corporation**

Advertised in ...  
ENCHANTMENT (NEW MEXICO)



# t- September Only!"

IF YOU HAVEN'T GOT IT . . . YOU NEED IT!

## "CO-OP" YOUR HOSPITAL BILLS

Now You Can "CO-OP" YOUR HOSPITAL BILLS . . . Through The "Co-op Insurance Fund" (C.I.F.). For Most Rural Residents This Plan Provides Their First Opportunity To Belong To An Insurance "Group" - And Buy Group Hospital Protection.

The Plan Itself is Not New. C.I.F. Has Spent Over Five Years to Fully Develop The Program. RURAL LEADERS Helped in Its Designing and Development . . . Men Such as ORVILLE L. FREEMAN (Former Secretary of Agriculture and Governor of Minnesota), CLYDE T. ELLIS (For 25 Years Manager of National Rural Electric Cooperative Association).



DEPOSITORY — National Bank of Georgia

TRUSTEE — Commerce Bank of Kansas City

### HERE ARE SOME OF THE PLAN'S VALUABLE HIGHLIGHTS:

**PAYS \$50.00 PER DAY CASH for Every Day in the Hospital.**  
—One Week in the Hospital. . . . . \$350  
—One Month . . . . . \$1,500  
—One Year . . . . . \$18,200  
—PLUS—If Accidental Death Takes Place—pays 100 TIMES  
The Daily Benefits. . . . . \$5,000

#### SIX REASONS YOU NEED THE C.I.F. PLAN:

1. Pays for one whole year (365 days).

PAYS IN ADDITION TO:

2. Other Insurance you may already have.

3. Workmen's Compensation.

4. Veteran's Hospitalization.

5. NO AGE LIMIT to apply.

6. Pays beginning THE VERY FIRST DAY in the hospital.

#### SIX MORE REASONS:

1. The ONLY time you can buy Hospital Protection is BEFORE you need it.

2. Last year hospital costs averaged as high as \$109 per day (Amer. Hosp. Assn.)

3. NO ONE CAN AFFORD TO TAKE A CHANCE ON HAVING THEIR SAVINGS (or what you own) WIPED OUT!

#### CONSIDER THESE FACTS:

4. One person in every third family will go the hospital this year. Almost everyone - will go to the hospital sooner or later.

5. YOU CAN'T BE CANCELLED — so long as you pay your premiums and the group policy remains in force (no matter how many times you go to the hospital — regardless of how many thousands of dollars you may collect in claims).

6. NO Hospital Plan pays for everything (lost pay, food, school, clothing, etc.).. YOU NEED EXTRA CASH.

IF YOU WANT TO LEARN HOW YOU CAN JOIN THE "Co-op Insurance Fund" GROUP INSURANCE PLAN . . . Complete the information below and mail while the need is fresh in your mind. NO AGENT WILL CALL OR CONTACT YOU. ALL INFORMATION WILL BE MAILED TO YOU. C.I.F. IS AVAILABLE ONLY BY MAIL.

#### THE HEADLINES ARE SAYING . . .

#### Getting Sick to Cost More

HEALTH INSURANCE, which is already high, is going to get worse. The industry blames soaring hospital and medical costs, plus inflation in general.

Last year the American Hospital Association reported the average Daily Hospital...had zoomed to \$109...for every day in the hospital.

Mrs. Rita Ann Mott of Saegertown, Pennsylvania writes:

"On September 5 my husband was hurt and as a result of that accident he spent 110 days in the hospital. When he first took out 'Co-op Insurance' I felt we didn't need it. I now feel this insurance is the best investment we ever made. I want to thank you not only for the money, but also for the promptness with which it was paid...I hope this letter will make someone else realize how important this insurance is."

The Co-op Insurance Fund paid the Mott family a total of \$5,350.00 in cash.

Please Print

CUT HERE

#### TO GET THE WHOLE STORY

Fill in information and mail to:

NO RISK  
NO OBLIGATION

### CO-OP INSURANCE FUND

Sixth Floor, 1447 Peachtree St., N. E.  
Atlanta, Georgia 30309

Name \_\_\_\_\_

Street Address (or RFD) \_\_\_\_\_

City/Town \_\_\_\_\_ State \_\_\_\_\_ Zip \_\_\_\_\_

Name of your Co-op \_\_\_\_\_

Are you interested in Coverage for:

☐ Male? ☐ Female? ☐ Children?

Age \_\_\_\_\_ Age \_\_\_\_\_

NO AGENT WILL EVER CONTACT YOU

Philadelphia's Ray "Bud" Ripplemeyer

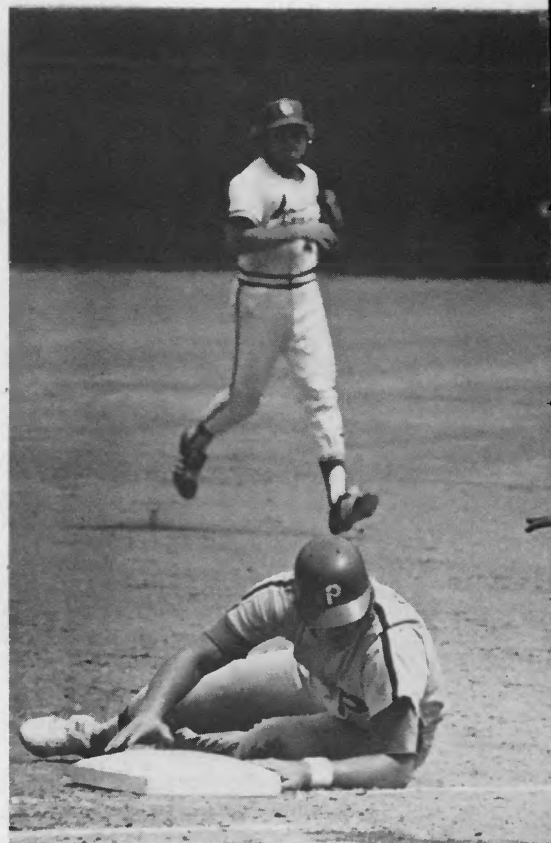
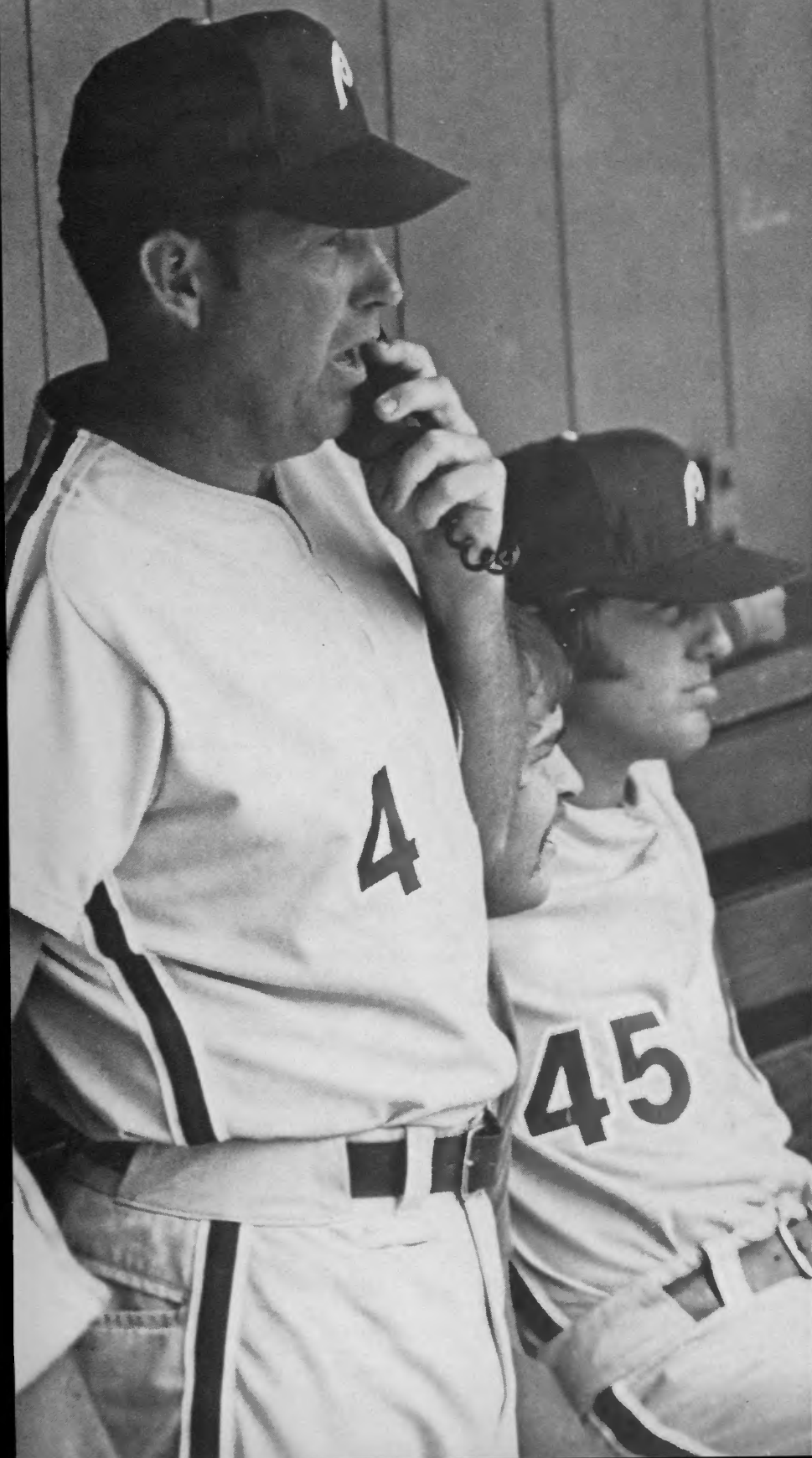
# farmer on

Ray "Bud" Ripplemeyer is a farmer who cultivates an extremely valuable crop on a small acreage.

Although he is responsible for a circular tract only 18 feet in diameter and 10-inches high, thousands of dollars hinge on just how much he can get out of that mound of dirt and the men who work from it.

Ripplemeyer is the pitching coach for the Philadelphia Phillies of the National Baseball League. And pitchers are the cash crop he works to produce—hopefully winning pitchers, certainly improved pitchers and possibly pennant winning hurlers.

But it was not a good day for his particular form of farming recently when the Phillies were playing St. Louis. A majority of the pitching staff had already been to the mound but only for brief stop-



# the mound

overs on the way to the showers. The Cardinals were hitting everything.

And Ripplemeyer kept on the dug-out phone trying to find the right "fertilizer" to get out of the inning. His crop was withering.

"Sometimes it's enough to make me wish I was back on the farm when things are going like this," Ripplemeyer said with a grin. "That's baseball though."

When the last pitch of the last game of the season has been thrown, Ripplemeyer will get his whimsical wish. He'll return to Valmeyer south of St. Louis just like every off-season since 1954 when he started his baseball career. Along with his brother, Robert, he is owner of Ripplemeyer Stock Farms—1,200 acres of Illinois farmland with some 3,000 hogs sold each year.

The Ripplemeyer farm is provided with electric service by Mon-

roe County Electric Co-Operative, Inc., Waterloo. Ripplemeyer's brother serves as president of the organization.

"I guess I'll always be a farmer first," Ripplemeyer said. "Baseball is not my ultimate dream. I don't plan to stay with it the rest of my life."

But the game which may or may not be America's national pastime has been a motivating factor in his life so far.

Ripplemeyer started playing baseball in high school, was tabbed as a pitching prospect by major league teams in college and wound up drafted by Cincinnati after playing semi-pro ball in Canada.

Although he had several springs with the parent clubs of organizations he belonged to, Ripplemeyer's total major league pitching career spanned only 44 innings with the old Washington Senators and a life-

time record of one win and two losses.

"I had some arm trouble along the way," Ripplemeyer said. "And I mangled a finger one winter on the farm which pretty well ruined my pitching motion after I had had a good summer the season before."

A damaged arm which signals the end of a career is nothing new in baseball. If his managers hadn't spotted some other talent, he might well have returned to the farm for good. All through his pitching career, however, Ripplemeyer had studied other pitchers, coaches and the game itself. He had what managers are fond of calling coaching potential.

"And I've been coaching or managing ever since," Ripplemeyer said. "I don't think anyone really pursues a job in coaching, it just comes along and you take it. To stay, you have to produce."

Ripplemeyer produced both as a minor league manager and as a pitching coach in Triple AAA ball. He was eventually hired by the Phillies to coach their staff, a position he has held for the past six years.

Each year it is another race to produce the best crop of major league pitchers. "That's what being a pitching coach is all about," Ripplemeyer said. "You are expected to get the most possible out of each person on the staff, to work them to their fullest. If a coach does that, then he is successful."

*LEFT: A telephone is a pitching coach's best friend. It brings instant bullpen help to a tiring pitcher. CENTER: Doubling as first base coach, Ripplemeyer seems to be acting as an umpire also, signaling safe to a teammate. RIGHT: KMOX radio announcer Jack Buck interviewed Ripplemeyer before a game in St. Louis recently.*





# farmer on the mound

The cultivating process begins in spring training. An assortment of pitchers—rookies desperately trying to stick with the squad, veteran pitchers coming off good years and bad ones and free agents looking for a chance to stay in the big time—are all worked into shape, carefully looked at and evaluated.

"What the manager and the coaches are looking for is a staff that will be competitive," Ripplemeyer said. "There is no formula, but you need veterans to hold the staff together and young pitchers coming up for the future."

When the season starts, however, the future is now.

"With the scheduling, there isn't that much time to work individually," Ripplemeyer said. "Most of the training is done by actually pitching in games."

"You have to realize that these men are major leaguers, the top of their profession," he said. "There isn't much you can really do to improve their pitching or teach them. But, if a pitcher is having problems or I notice something different in his motion, then I wait for him to come to me and say, 'Well, coach, what am I doing wrong?' Then, we talk it over, find out what's wrong and correct it."

One of the things Ripplemeyer stresses is for a pitcher to work fast. "People say they don't like baseball because it's too slow," Ripplemeyer said. "I don't think that's fair because something is happening almost all the time. I do think a pitcher can make a difference, though, by working fast. It makes it more fun for the fans and less tiring on the players."

Besides being the pitching coach, Ripplemeyer keeps in shape by throwing batting practice and working out in the infield. Recently, he has been given double duty as first base coach.

"A couple of people have asked how I wound up coaching first," Ripplemeyer said. "The regular coach was sick one game and I filled in. We got on a winning streak and

I've been coaching there since."

Ripplemeyer broke into a smile when he said, "Of course, baseball players and managers aren't superstitious."

Coaching first has given Ripplemeyer a chance to study opposing pitchers. An unnatural movement—a higher kick, a head jerk or any other nuance—may later be translated into knowing what the next pitch might be.

And while he is in the dugout, he continues to watch—this time his own pitchers. "You watch to see if he's got his stuff," Ripplemeyer said. "Maybe he looks like he is tiring, his curve ball is hanging or if he just can't buy a strike. Watching everything is just being a pitching coach."

Although baseball has been his profession in one way or another since he was in high school, Ripplemeyer still dreams about going back to the farm permanently. "I don't

know when," Ripplemeyer said, "but I know I am going back. Right now, I'd say there are some things left I'd like to do before I quit."

"I've had a lot of thrills—like seeing one of the Phillies pitchers, Steve Carlton, win 27 games one season," Ripplemeyer added. "But I'd still like to be on a pennant winner, maybe a World Series championship team. Besides, I've got a young son who loves baseball and would be real angry if I quit now."

But the long schedule and constant travel are things that might lead Ripplemeyer to quit coaching before too many more seasons pass. "I don't like being away from my wife and kids," he said. "And I've been at this a pretty long while."

Until he makes some decision, Ripplemeyer intends to keep farming—both at the stock farm in the off-season and for the Phillies on a little pile of dirt 60 feet, six inches from home plate.

**Bargain Price . . . Plus Our  
Famous 72-Hour Service!**

## TULIP BULBS

only **3¢** each

**MINIMUM 50 FOR ONLY \$1.50**

Tulips bloom in all their graceful splendor and brilliant color in spring . . . but they must be planted in fall! Mail coupon today for this fantastically low-priced bargain offer. Our "flaming mix" assortment of healthy, hardy medium size planting stock bulbs (2¼-3" circ.), bloom year after year without replanting, 50 for only \$1.50. Or order 100 for only \$2.95 and really save! Add 40c postage and handling. We guarantee to ship your order within 72 hours after we receive it! Better yet, you get six beautiful Crocus free with every order received by November 1. We guarantee myriads of blooms next spring, and full normal bloom at least 5 additional years, or free replacement. If not satisfied on arrival, return within 30 days for full refund. Clip and mail today!



**FREE**

**6 CROCUS**

at no extra cost with every order received by Nov. 1. (2¾" circ.). Imported Holland. Mixed Colors, bloom early spring.

**10 DAFFODILS  
ONLY \$1.50**

Another tremendous bargain! NARCISSUS variety (avg. 4" circ.), mixed colors. Use coupon at right, send today.

**ROCKWOOD GARDENS, Dept. R-312  
60 Monroe Ave., Grand Rapids, Mich. 49525**

Please rush my order as checked below within 72 hours of receipt. Guarantee of satisfaction on arrival or I may return within 30 days for full refund. Remittance enclosed, (sorry, no COD's . . . Post Office charges almost \$1.00 extra). Print name and address below.

☐ 50 Tulips, \$1.50

☐ 10 Daffodils, \$1.50

☐ 100 Tulips, \$2.95

☐ 20 Daffodils, \$2.95

☐ 200 Tulips, \$5.75

☐ 40 Daffodils, \$5.75

(Add 40c postage and handling)

Print Name \_\_\_\_\_

Address \_\_\_\_\_

City \_\_\_\_\_

State \_\_\_\_\_

Zip \_\_\_\_\_

# Cut off the electricity and your life can be drastically affected for several hours.



# Cut off your earning power and your life can be drastically affected for years.

Like electricity, good health is something we often take for granted. But just as lightning can suddenly cut off the electrical power, disability can just as quickly cut off your earnings. At a time when medical bills are added to the cost of everyday living, the loss of your income can be especially serious.

Your Disability Income Protection Plan can help see to it that you will have money to live on when you are unable to work because of a covered illness or injury. These are tax free benefits to help replace your paycheck. You use it on your family needs as you see fit.

For more information regarding this Disability Income Protection Plan, just mail in the coupon below. Or contact your local Mutual of Omaha representative.



L. Earl Cutler  
7600 West Main Street • P.O. Box 965  
Belleville, Illinois 62223  
Phone: (618) 398-1950

S. B. Stottrup  
111 East Decatur • Decatur, Illinois 62525  
Phone: (217) 429-5495

A. H. Harris  
1119 South Sixth Street  
Springfield, Illinois 62705  
Phone: (217) 528-3434

Lee Weckerly Division Office  
P.O. Box 419  
Rockford, Illinois 61105

Jack B. Williams  
Jack Williams Division Office  
285 South Plazaway  
Cape Girardeau, Missouri 63701  
Phone: (314) 334-2841

R. L. Thomas  
309-10 Bondi Building  
Galesburg, Illinois 61401

UNDERWRITTEN BY  
**Mutual of Omaha**

*People you can count on*

Life Insurance Affiliate: United of Omaha

MUTUAL OF OMAHA INSURANCE COMPANY  
HOME OFFICE: OMAHA, NEBRASKA

Disability Income Protection Plan  
Mutual of Omaha • Dodge at 33rd Street  
Omaha, Nebraska 68131

I would appreciate having a licensed representative explain a program of Disability Income Protection to me.

NAME \_\_\_\_\_

ADDRESS \_\_\_\_\_

CITY \_\_\_\_\_ STATE \_\_\_\_\_ ZIP \_\_\_\_\_

**FILL OUT AND MAIL TODAY. NO OBLIGATION!**

Dept. 2R



friendly  
hellos,



good  
buys at

# Goodfield Saturday

In our "mass produce everything" society, department and variety stores are filled with plastic and tin machine-made items. But machines have certain limitations and quantity is too often substituted for quality.

No one has yet constructed a machine which can create a quality quilt, a fine macramé wall hanging, intricately painted china or beautiful handcrafted eggshell jewelry.

Items such as these must be crafted by skilled hands that know the meaning of precision, detail and pride. Handcrafted is the magic word which denotes quality. Similar to a fine painting which has certain distinct brushstrokes, handcrafted items carry the personal touches of their crafters.

Whole towns were once built around craftsmen as silversmiths, harnessmakers, cobblers, seamstresses and millers provided the goods necessary for everyday life. These craftsmen were the grass roots of modern

industry, but somehow became almost expendable in an age where things are getting too big and complex.

But even in our mass produced world a few people are still taking time out to go back to the old ways where quality was measured by a person's pride in his product, as well as his skill.

Today, young and old alike are turning what were once hobbies into profitable ventures—but only after devoting many years and dollars to learning their crafts.

They market their goods in craft shows, from basement workshops or at roadside stands. The Goodfield Saturday Market is a new idea in the area of marketing which has evolved in central Illinois. The artists and craftsmen exhibiting there feel it is an excellent way to market their wares as well as meet fellow artists.

The Goodfield Saturday Market is the brainchild of the Goodfield

Crafts Guild, a nonprofit organization dedicated to encouraging and providing instruction in various arts, crafts and hobbies in the Eureka, Congerville, Goodfield, Mackinaw and Deer Creek area.

The market is located about one mile north of Goodfield just off Illinois Route 117 in the recreation building at Timberline Campground. Goodfield is about halfway between Bloomington and Peoria on Interstate 74. The market is provided with electric power by Corn Belt Electric Cooperative, Inc., Bloomington.

The recreation building is a large barn and provides plenty of covered space for exhibitors from Peoria, Bloomington, Normal, Chenoa, Rutland, Bushnell, Metamora and Danvers as well as those from the Guild's area.

In its second year, the market is open every Saturday in August, September and October. "Our first





FROM LEFT: Handcrafted jewelry by Helen Schumm of Secor gains the attention of ladies at the Goodfield Saturday Market. Lapidarist Lawrence Nichols of Congerville shows customers the different stones in his collection of handcrafted items. Fine handmade quilts are the family pride of Ora Koehne, daughter Ruth Sayer and granddaughter Melanie. Marie Bour and daughter of Eureka turn ordinary satin Christmas tree bulbs into highly decorative ornaments.

# Market

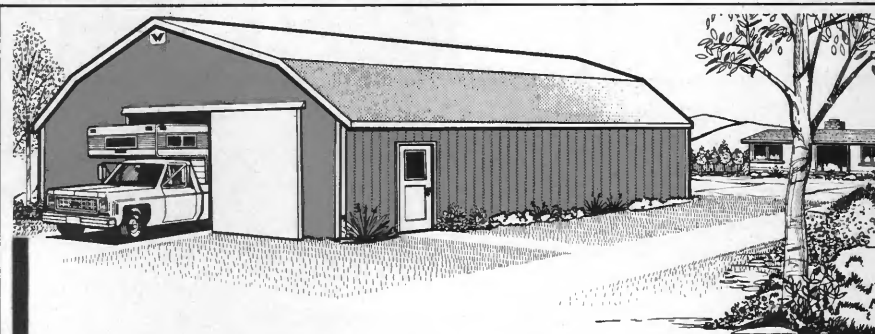
year got us off to a good start," said Guild President Mrs. R. L. Holder, "but this year more people know we are here and the crowds have been excellent."

Featured at the market are drawings and paintings, macrame, leathercraft, ceramic and eggshell jewelry, lapidary work, Christmas ornaments and needlework.

Also at the market, visitors may purchase vegetables from the gardens of members of a newly formed produce cooperative.

Home baked goods are available and for those who wish to do their own, one exhibitor sells freshly ground wheat flour, corn meal and cracked wheat, along with appropriate recipes.

One of the best items at the market, however, is not for sale. It is the friendly atmosphere, which is free to all and maybe is one reason why people keep coming back to the Goodfield Saturday Market.



## 'Sitting Pretty'

**TOWN & COUNTRY—The New Wickes Utility Building with Gambrel Roof Design**

You'll be sitting pretty in more ways than one with a new Wickes Town & Country on your property.

One of the most attractive utility buildings we've ever offered, the Town & Country has a traditional early American charm that fits right into any setting—home, farm or ranch.

More than just another pretty face, our Town & Country is also a practical, efficient building, with plenty of storage space for vehicles, recreational equipment, implements—or workshop if you want one. A spacious 30' x 40' clear span structure with maintenance-free exteriors of color aluminum or color steel.

Call today, and we'll have a beautiful, new Wickes Town & Country sitting pretty on your land tomorrow.

**W Wickes Buildings**

A Division of The Wickes Corporation



Shelters, garages, workshops, utility buildings

### ILLINOIS

Box 548, Galesburg (309) 342-3416  
Box 9, Mendota (815) 539-9325  
Box 158, Opdyke (618) 756-2347  
Box 117, Taylorville (217) 824-4441

Call collect or mail coupon today

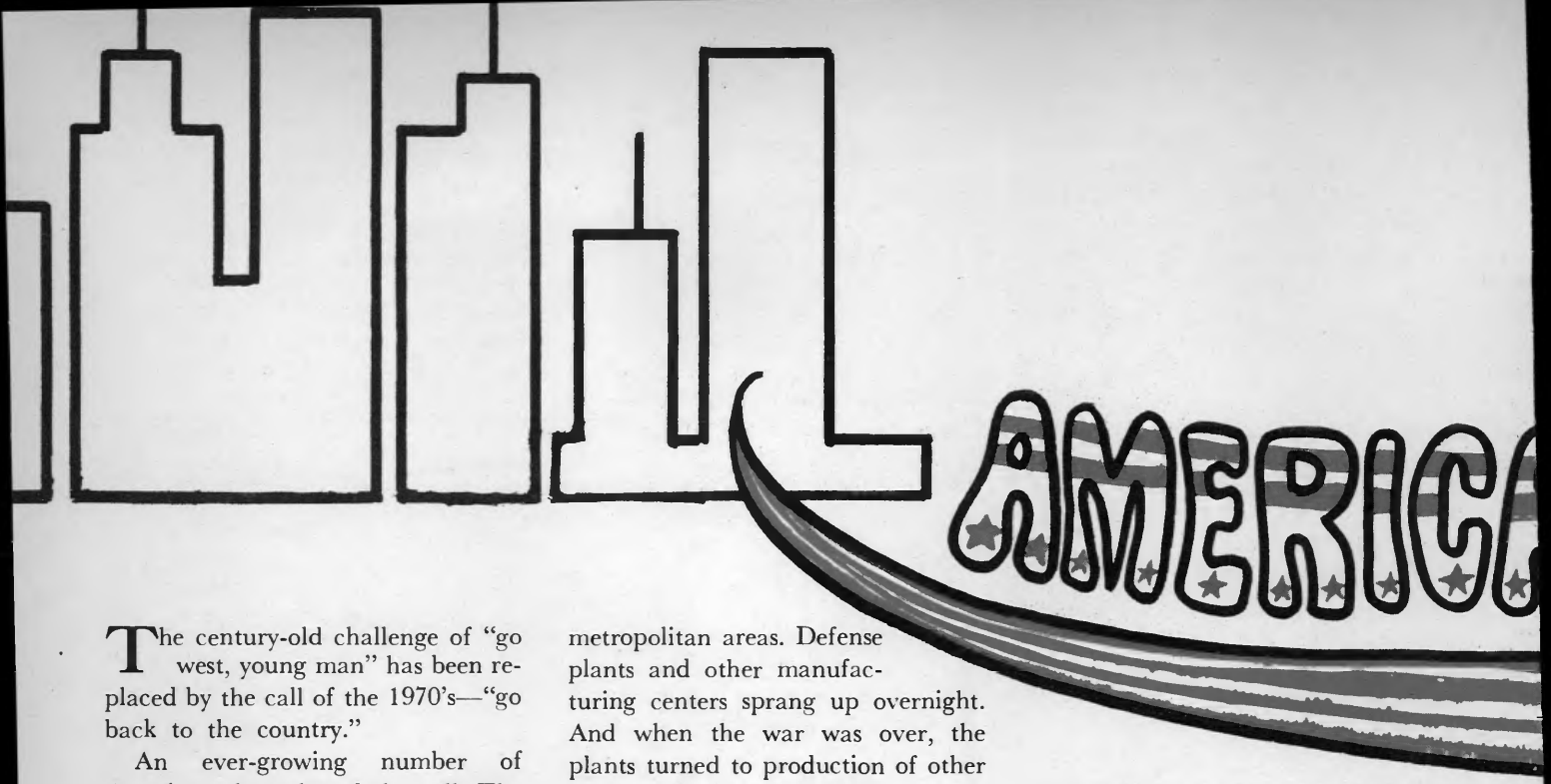
Name \_\_\_\_\_

Address \_\_\_\_\_

Town \_\_\_\_\_ County \_\_\_\_\_

State \_\_\_\_\_ Zip \_\_\_\_\_ Phone \_\_\_\_\_

IR 9



The century-old challenge of “go west, young man” has been replaced by the call of the 1970’s—“go back to the country.”

An ever-growing number of Americans have heard the call. The rural area has been deluged in a phenomena usually associated only with the city—a population explosion.

In a study compiled by the United States Department of Agriculture’s Calvin Beale, statistics show the rural areas are growing at a much faster rate than the cities—4.2 percent to 2.9 percent for metropolitan areas. As late as the 1960’s metropolitan growth was double that of the non-metro areas.

Mobility is nothing new in our society, but this urban to rural exodus represents a complete reversal of a national trend that started at the same time as the country.

The first population movements in this country were expansionist—moving ever westward to California with the overflow populating the states along the way. But at the same time, there was a movement away from the rural life into the cities, cities which were quickly becoming the home of manufacturing.

Later in history, there was a migration from the Old South to the Industrial North, primarily by blacks. This was an uprooting caused by low income and unequal opportunities. The city provided what many believed was the ideal life.

World War II brought an even greater influx of people into the

metropolitan areas. Defense plants and other manufacturing centers sprang up overnight. And when the war was over, the plants turned to production of other goods. The people stayed.

The movement into metropolitan areas slowed in the early 1950’s. And the early 1960’s saw a reverse movement to the suburbs. Although primarily a result of upward mobility and readily available, cheap fuels which allowed a person to live further from his work, there was also a racial overtone to the suburban movement—whites escaping the inner city with its rising crime rate.

At the same time non-metropolitan counties had greater retention of population. Non-metro counties in the 1960’s lost only 2.2 million people, a reduction of 60 percent from the prior decade.

Many feel that the latest trend out of the cities directly into the rural areas is merely an extension of the suburban movement. And, in fact, between 1970 and 1973 while more than six million people moved out of the metropolitan areas, the suburbs gained four million people, partly due to population growth but largely to migration.

The counties adjacent to a large metropolis still experienced more than half of the non-metropolitan growth. But as the growth rate in counties adjacent to metropolitan areas exceeded that of the metropolitan counties, so did the rate of all-rural counties, counties which have no towns with 2,500 people or more.

In Illinois, which gained only a token two-tenths of a percent of population in the period of 1970-1973 or 17,000 people, the counties which showed the greatest increase in population were those without large metropolitan areas. Many of these areas, however, had a metropolitan area in an adjacent county. Menard County, for instance, gained 9.0 percent with Springfield only a few miles away.

Some of the economically depressed counties of Southern Illinois also gained. Pope County gained 10.3 percent during the four year period, and Johnson gained 15.8 percent while smaller gains were reported in Williamson, Saline, Franklin, Hardin and Jefferson counties.

The southernmost counties of “Little Egypt”—Alexander, Pulaski and Massac—, however, still were losing population.

Also losing population were the counties with the largest metropolitan areas in the state. Chicago’s Cook and East St. Louis’ St. Clair County were the big losers, but counties within driving distance of them experienced gains. Bond County, east of St. Clair County, increased in population by 6.5 percent.

The greatest influence on the population has been the move of manufacturing companies into the rural areas. In non-metropolitan

areas cheaper labor, only loose union control and easily met pollution and zoning ordinances are all agreeable to big business.

To a smaller extent, people are moving back to the country because the rural areas are beginning to provide the services and opportunities of the metropolis.

Beale, in his study, contends that another contributing factor is the decentralization of state universities and the growth of junior colleges. More young people are staying closer to home for school and teachers are moving there to educate them.

In Illinois, McDonough County, home of Western Illinois University and McLean County, home of Illinois State University, have both experienced substantial growth. Jackson County, home of Southern Illinois University, has declined in population as has Carbondale itself.

A lightly regarded factor, often thought of as a fad, is the movement of young people to "return to the soil." The natural life is what many youths feel the rural area can provide them and they are moving to the country in large numbers.

As the young are returning to the rural areas, so are the old. Retirement communities are springing up quickly and not just in the traditional retirement

areas such as Florida and the Southwest.

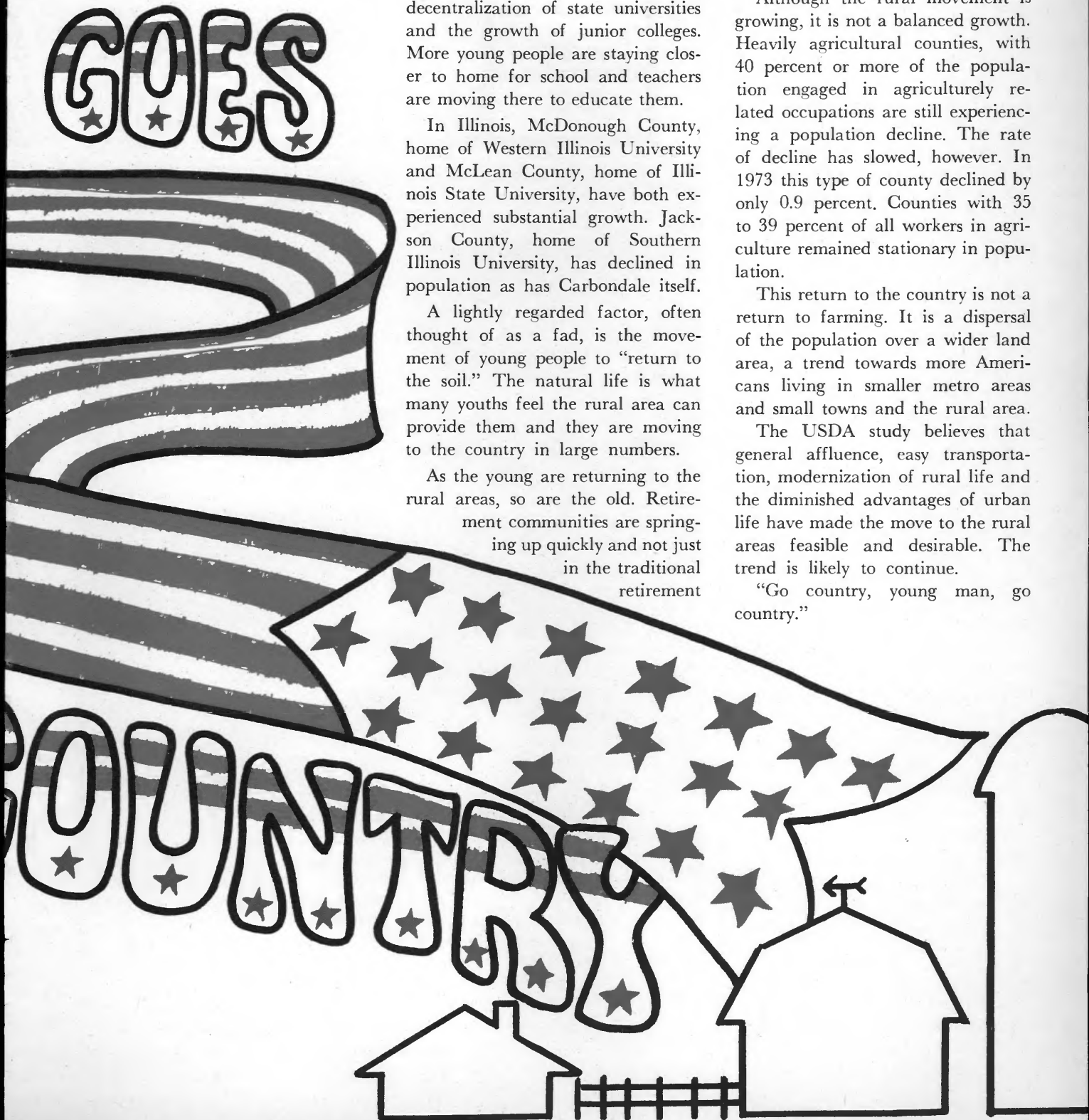
Coupled with the retirement communities, and sometimes located in the same general area, are recreation facilities unavailable in the city. These originally non-economic moves often are translated into economic gains as businesses spring up to provide goods and services for these communities.

Although the rural movement is growing, it is not a balanced growth. Heavily agricultural counties, with 40 percent or more of the population engaged in agriculturally related occupations are still experiencing a population decline. The rate of decline has slowed, however. In 1973 this type of county declined by only 0.9 percent. Counties with 35 to 39 percent of all workers in agriculture remained stationary in population.

This return to the country is not a return to farming. It is a dispersal of the population over a wider land area, a trend towards more Americans living in smaller metro areas and small towns and the rural area.

The USDA study believes that general affluence, easy transportation, modernization of rural life and the diminished advantages of urban life have made the move to the rural areas feasible and desirable. The trend is likely to continue.

"Go country, young man, go country."





# Farm Productivity— A Success Story

The chronicles of agricultural productivity—fewer and fewer farmers producing greater amounts of food for more and more people—is a success story unparalleled in U.S. history.

From 100 percent of the original settlers working the land for their own survival to the present total of less than five percent of the U.S. population engaged in farming to feed the remainder of the country and a sizable part of the world, it's a story of amazing agricultural statistics.

At the time of the Revolution, more than 90 percent of the population of the new nation was still engaged in farming.

By 1820, the percentage of farmers had dropped to some 83 percent and about 60 man-hours of labor were needed to produce an acre of wheat.

Gradually, the number of Americans in agriculture continued to slip until by 1870 farmers were no longer in a majority in the U.S. By then, only 47 percent of the country's population could be classified in agriculture.

The number of farmers dwindled further and by 1910 only a third of the growing population was in agriculture.

With only 21 percent of the population in farming in 1930, total man-hours required to produce an acre of wheat fell to just three.

In the 1950's, the farming population dipped to less than 15 percent and continuing declines reduced that percentage to less than five presently. But agricultural production maintained its upward climb and output per man-hour jumped some 3½ times in the past two decades.

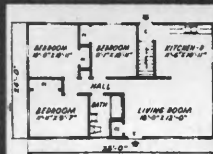
Never have so few given so much to so many. And never will the challenges be so great as in the future.

Over Quarter Century of Building  
for the American Family



## QUALITY HOMES AT LOWEST PRICES

ON YOUR FOUNDATION / INCLUDING PLUMBING, WIRING & BIRCH CABINETS



**5% OPEN  
HOUSE  
DISCOUNT**

Over 1001  
Floor Plans  
To Choose From

Every Nordaas Home includes full-weight conventional construction, NOT PRE-FAB or PRE-CUT! Your new home completely framed, roof shingled, fully enclosed, 70% of the carpenter work is done for you, or we will finish carpentry for a little extra. All finishing materials furnished — blanket insulation, hardwood cabinets all ready-made, inside doors ready-hung with trim installed. Western dry dimension lumber. All materials direct from mill and factory to you saves hundreds of dollars! FREE planning service — build to your own plans or choose from over 1000 floor plans.

**FREE PLAN SERVICE • FREE DELIVERY 1500 MILES**

One of America's Largest Builders of Homes  
Write for Free Floor Plan at No Obligation

**NORDAAS AMERICAN HOMES**

Dept. 236-F, Minnesota Lake, Minnesota 56068  
PHONE: (507) 462-3331



Available throughout the entire Midwest  
in America's Great Farming States  
Save this Ad for Future Discount



**A  
Halloween  
Treat  
for only 25¢  
\$1.25 value**

### GLITTERS BY DAY . . . GLOWS AT NIGHT

Put some fun in your window . . . brighten a door or a wall. This translucent Jack-O-Lantern will welcome little "Trick or Treaters" with a smile. Made of thousands of glowing plastic beads, it's a delightfully different decoration that captures the happy Halloween spirit.

### EASY WAY TO RAISE MONEY

When you receive this unusual decoration, you'll see immediately how you or your club or organization can earn needed money fast selling Halloween Plaques and many other products just as unique and just as much fun.

**MIDWEST**

**CARD COMPANY**

Dept. 208-H

1113 Washington Ave., St. Louis, Mo. 63101

I enclose 25¢ for my colorful Jack-O-Lantern and information on other easy ways to earn money from Midwest at absolutely No Obligation.

Name \_\_\_\_\_

Address \_\_\_\_\_

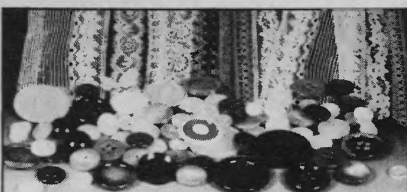
City \_\_\_\_\_

State \_\_\_\_\_

Zip \_\_\_\_\_

Also send Fund Raising Plan for Organizations

Name of Organization \_\_\_\_\_



## 50 YARDS LACE \$1.25

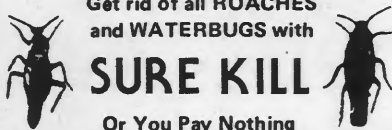
LACE — LACE — LACE . . . 50 yards of Lace in delightful patterns. Edgings, broids, insertions, etc. All beautiful color, full widths. Pieces of least 10 yards in length. Marvelous for dresses, pillow cases, etc. Terrific as hem facing on new double knit fabrics. Only \$1.25 plus 25¢ pstg., double order \$2.39 plus 35¢ pstg.

FREE with lace 100 BUTTONS!

100 New, High Quality Buttons. All colors, sizes, and shapes. Many complete sets. Free with each Lace Order. Order Now!

LACE LADY  
808 Washington

DEPT. LN-253  
St. Louis, Mo. 63101



Get rid of all ROACHES  
and WATERBUGS with

## SURE KILL

Or You Pay Nothing

Roaches eat Sure Kill greedily and return to their nests which they contaminate, starting a chain reaction that wipes out all other roaches and eggs.

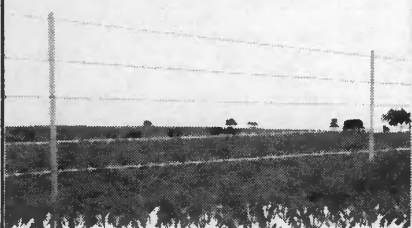
Sure Kill never wears out, is absolutely odorless and safe to use. It contains no D.D.T. A single can cleans out six rooms and keeps them free of roaches and waterbugs for years. Money back guarantee. Send just \$3.98 for one can, two for \$6.98 postpaid.

FOX ENTERPRISES

Box 211, Marion, Ky. 42064

Mfg. and Distr.

## World's Fastest, Easiest Fencing!



## tep-POSTS

### 66" PLASTIC LINE POSTS

New 72" Line Posts, Heavier & Larger

- Strong, Durable, Attractive
- Non-Conductive, Non-Corrosive
- Drive-In Easily with Tepco Driver
- No Digging, Setting, Filling

Build your fences the easy way with TEPCO Line Posts—just like hundreds of ranchers and farmers throughout the nation are doing. Tep-Posts are strong, light weight and durable. Easy to carry in quantity. Weighted steel driver is necessary to drive in the Tepco posts. Wire clip fasteners and postdriver furnished at nominal costs.

Get literature on line fence posts and 48" electric posts

See your dealer or contact us  
Write or Call 405 424-2222  
(TEPCO, INC.)

THOMAS EXTRUDED PLASTICS CO., INC.  
P.O. Box 145, Oklahoma City, Okla. 73101

# This is a catalog of more than 350 varieties of fruit trees, shade trees and plants. It's also a planting and growing guide. Free from Stark Bro's.



Grow full-sized, full-flavored fruit on trees that grow only 8- to 10-feet high. Stark Bro's special dwarfing procedure affects only tree size. Fruit is often bigger than regular trees. Trees yield usually within just two years after planting.

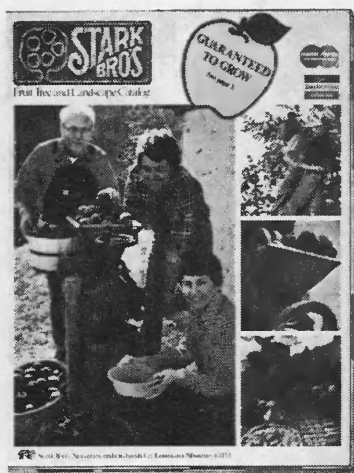
"I'm enclosing pictures of a dwarf Starking Delicious Peach Tree we purchased in March of last year which bore 75 beautiful peaches this July. With the past success we have had with your trees we are proud to say that they are 'Stark Bro's Trees'."

Mr. Ervin Huebner  
Columbia, Illinois

Award winning roses. Over 28 different varieties of hybrid tea, floribunda, grandiflora and climbing roses. Many patented varieties like those from the famous gardens of Delbard-Chabert. And many other exclusives available only from Stark Bro's.



Special section on heavy-yielding, early-ripening fruit trees with high resistance ratings. Ideal varieties for organic gardeners.



Have 12 weeks of fresh fruit in a 10-ft. x 20-ft. area of your backyard. Grow full-size apples, peaches, pears, nectarines in a "postage stamp" orchard of dwarf-size trees.

**Stark Bro's Historic 3-way Guarantee**  
1. Guaranteed that every Stark Tree and Plant you receive is true to name or money back. State inspected and will arrive in good live planting condition.  
2. Guaranteed that every Stark Tree and Plant, if given reasonable care and attention, will live and grow.  
3. Guaranteed that every Stark Tree and Plant which does not grow as guaranteed WILL BE REFILLED FREE OF CHARGE if request is made direct to the company by the customer BEFORE AUGUST 1 following planting and if original order is paid for as agreed. Your only cost for replacement will be the transportation. Liability limited to purchase price.  
We want you to be satisfied. Write us if anything is wrong—our goal is your complete satisfaction.

The description with each variety in the catalog tells you what to expect from what you grow. And each description tells you in which zones the variety grows best. We've included an easy-to-follow Zone Map.



The famous Luther Burbank selected Stark Bro's to continue his important experiments. We pass the results of his research on to you through the superior varieties we offer.



Walnuts, hickory nuts, butternuts, chestnuts, pecans, on your own trees. Make delicious pies or dessert toppings.

Pick fresh berries in your yard. Stark Bro's robust berry plants make growing easy and fun. Catalog features healthy, heavy-bearing, certified strawberry plants, delicious raspberries, blueberries, and blackberries.



Stark Bro's Box A-10395 Louisiana, Missouri 63353

Stark Bro's Nurseries Box A-10395 Louisiana, Missouri 63353

## New Free Catalog

Features over 350 different varieties of fruit trees, shrubs, roses, nut trees, shade trees, and other nursery stock for the home gardener. Use this coupon and send for yours today.

(Please Print)

Mr. \_\_\_\_\_  
Mrs. \_\_\_\_\_  
Miss \_\_\_\_\_  
Address \_\_\_\_\_  
City \_\_\_\_\_ State \_\_\_\_\_ Zip \_\_\_\_\_

☐ Part-time salesmen and women needed Check block for free sales kit and information. No obligation.

# EPA DIRECTOR

(Continued from page 5)

equitable way with the energy problem as it relates to our environmental goals.

"For well over two years, we have gone publically on record in favoring the variance route," Brice land said. "And our posture on this has been consistent. When an industry or plant has had trouble with clean fuels, we've encouraged them, after they have made a good faith effort to correct the situation and supported their variance petitions.

"I think by and large if one looks back we have tried very hard through the variance route to find solutions to the problem, rather than beat anyone over the head with a regulatory stick."

Furthermore, according to Brice land, the EPA has proposed a rule change and has asked the PCB to repeal the six pound per million BTU limit placed on rural power plants.

"The reason that thing got on the books in the first place," Brice land said, "was that it was thought you could achieve three percent sulfur content by washing coal. Since then we have learned that isn't the case and we are asking the PCB to modify the mass emission formula.

"As part of that proposal the rural power plants have until December 31, 1982, to come into compliance with the sulfur dioxide limitations.

"I think the seven and a half year extension will be adequate to get nationwide experience under our belts as to what scrubber technology will and won't do, what kind of systems are good, what the costs are going to be and I think that kind of approach along with the use of intermittent controls make a lot of sense."

"We both want an environmental ly acceptable way to meet our power needs and I for one frankly feel there is no reason in this world why we can't find solutions that satisfy both our needs."

## It's Music To Your Ears! GOLDEN SOUNDS STUDIOS

Custom Recording Services  
We'll help you make music to your ears (and the ears of others as well) on albums, 45's, 8-tracks, or demo tapes. Write for details. (Ask about our "Try Us Free" offer. We'll make you an offer you can't refuse!)

Newest Releases  
Pope County Banjo, by Larry Barger and the Pope County Boys. Bluegrass music at its best. Available on LP Stereo Album. "Foot-stompin' great!"

\*\*\*  
The Gospel According To John Henry, Vol. 1, by John Henry Hubbard. Bluegrass Gospel at its finest. Includes two original Hubbard compositions. Available on 8-track tape.

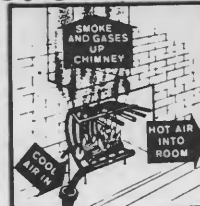
\*\*\*  
The Gospel According To John Henry, Vol. 2, by John Henry Hubbard. Country Gospel, from Gospel Country. Available on 8-track tape for a shoutin' good time.

\*\*\*  
(All releases \$5.00 each plus 25 cents postage and handling) Order from:

GOLDEN SOUNDS STUDIOS  
Golconda, IL 62938 Phone (618) 683-7021

## NEW A FIREPLACE CIRCULATING HEATER

### Convector Heater



Actually circulates heat into adjoining rooms  
• NO INSTALLATION NECESSARY  
• FITS MOST FIREPLACES  
• PORTABLE — Comes completely assembled  
• Retains at less than 1/4 the cost of built-ins  
• Saves Fireplace Fuel and lowers fuel bills

FOX ENTERPRISES  
Box 211, Marion, Ky. 42064

## NOW! Low-Cost, Revolutionary, Electric Baseboard Heating Invention Gives You Advantages of... HOT WATER HEAT WITHOUT PLUMBING!



MORE THAN A MILLION  
INSTALLATIONS ALREADY

**INTERTERM**  
HOT WATER ELECTRIC  
BASEBOARD HEATING  
Now Available with  
INTERTERM Air Conditioning

### Permanent Systems for Entire Homes—Portables for Single Rooms

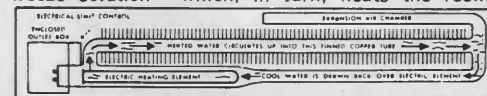
Now—thanks to INTERTERM—your family can enjoy the advantages of hot water heat—without the high installation and upkeep cost of a central hot water heating system. Soft, gentle, quiet, uniform, floor-to-ceiling heat—that ends cold floors, drafts, alternating too-hot, too-cold periods—and is the cleanest, safest, most economical, healthful heat.

Furthermore, the INTERTERM Can't Over-heat and carbonize lint and dust particles that dirty room furnishings, irritate nose and throat and vaporize plastic particles into toxic vapors. Can't cause a fire, burn child or pet or scorch drapes. It's recommended by many allergists.

Takes Place of Central Heating Systems of All Types—and Costs Much Less to Install and Maintain. Because it requires no burner, boiler, furnace, pipes, ducts, flues, chimney, fuel storage tank or bin. Be sure to tell your dealer, builder or architect you want INTERTERM Heating. And mail coupon for FREE literature; and a FREE Factory-Engineered Heating Layout of the home you plan to build or remodel, if desired, for which send us plans or room measurements. No obligation. Mail coupon today!

INTERTERM INC.; Dept. LL-95  
3800 Park Ave., St. Louis, Mo. 63110 2-72

INTERTERM's Patented Inner Works, Shown By Diagram Below, Makes This Possible. It consists of a copper tube inside of which an electric heating element and a water and anti-freeze solution—which never needs replenishing—are permanently, hermetically sealed. Electricity heats the water and anti-freeze solution—which, in turn, heats the room.



Protect Yourself Against Oil and Gas Shortages and Skyrocketing Prices!

### MAIL COUPON FOR FULL INFORMATION!

INTERTERM INC.; Dept. LL-95  
3800 Park Ave.; St. Louis, Mo. 63110

Please send me FREE Brochure which gives full information, and prices. I am interested for heating:

- ☐ Single, cold, hard-to-heat room.  
☐ My entire home.  
☐ Office, nursing home, motel, school, etc.

Name ..... Phone .....

Address ..... Zip .....

Town ..... State .....

You can get full information from these Interterm Distributors:

Aurora—60504 Scott Wood & Metal Inc. Rt. 2, Box 150, Rt. 30 Ph: 312-898-5400	Centerville—62801 Travel Electric Company 312 N. Poplar St. Ph: 312-532-6214	Chicago—60641 Weco Sales Co. 4248 S. N. Milwaukee Ave. Ph: 312-545-4689	DeKalb—60115 Crescent Elec. Supply 6th & Oak St. Ph: 815-756-4868	Evenston—60202 North Shore Elec. Supply 245 Dodge Avenue Ph: 312-869-2126	Highland Park—60035 Idlewood Elec. Supply Co., Inc. 114 Skokie Valley Road Ph: 312-831-3600
Bloomington—61701 United States Elec. Co. 904 S. Dunn Ph: 309-827-6194	Chicago—60636 8 & M Plg. & Htg. Supply 5855 S. Ashland Ave. Ph: 312-406-1204	Decatur—62522 Englewood Elec. Supply 336 W. Carro Gordo St. Ph: 217-428-4136	Des Plaines—60018 Activision Aids, Inc. 1231 Rand Road Ph: 312-297-4130	Forest Park—60130 Classic Elec. Supply 7700 W. Madison Ph: 312-366-1014	Joliet—60436 Crescent Elec. Supply 200 S. Lark in Ave. Ph: 815-725-3020
Broadview—60153 Maywood Elec. Supply 1913 Roosevelt Road Ph: 312-345-4242	Chicago—60621 Englewood Elec. Supply 3939 S. Karlov Ave. Ph: 312-376-8760	Decatur—62522 Field & Shorb Co. 705 N. Pine St. Ph: 217-429-4431	East Dubuque—61025 Crescent Elec. Supply Dunlath Dr. Ph: 815-742-3145	Galesburg—61401 Galesburg Elec. Supply 739 S. Handerson Ph: 309-343-4112	Kankakee—60901 Connor Company P. O. Box 508 Ph: 815-933-6688
Kewanee—61443 May Elec. Supply 213 E. Third Street Ph: 309-853-4419	LaSalle—61301 Connor Company Airport Road Ph: 815-224-1205	Mt. Prospect—60056 Northwest Elec. Supply 30 S. Main Ph: 312-255-3700	Peoria—61602 Connor Co. 2800 N. E. Adams Ph: 309-688-4405	Peoria—61602 Kiefer Elec. Supply Co. 318 24 S. Washington Ph: 309-674-1143	Rock Island—61201 Garber Supply Co. 3152 Fifth Ave. Ph: 309-788-4582
Mattoon—61938 Central White Supply Co. 1304 S. 18th St. Ph: 217-235-5671	North Chicago—60064 Goodman Elec. Supply 711 Tenth Street Ph: 312-336-6767	Peoria—61603 Crescent Elec. Supply 1500 N. E. Adams St. Ph: 309-673-8586	Peoria—61603 C. D. French & Co. 1406 N. E. Jefferson Ph: 309-676-1161	Peru—61301 Englewood Elec. Supply Hwy 51 & Westral Road Ph: 815-233-2651	Springfield—62701 United States Elec. Co. 216 E. Adams Ph: 217-522-3347
				Rockford—61104 Englewood Elec. Supply 124 N. First St. Ph: 815-963-5441	Zion—62999 Proctor Supply Co. 101 E. Maryland St. Ph: 618-596-4321



# NURSERY STOCK SALE! OVER 350 VARIETIES TO CHOOSE FROM Planting instructions included in each order. Every plant will be labeled.

## FLOWERING SHRUBS— 1 or 2 Years Old

Creepe Myrtle-Red, Purple, Pink, White, 1 to 2 ft. ....\$79 ea.  
Spiraea Van Houttei-White, 1-2 ft. ....59 ea.  
Spiraea Reenensiana, 1 to 2 ft. ....49 ea.  
Weigela-Red or Yellow, 1 to 2 ft. ....49 ea.  
Weigela-Var. or Pink, 1 to 2 ft. ....49 ea.  
Althea-Red or Purple, 1 to 2 ft. ....49 ea.  
Althea-Pink or White, 1 to 2 ft. ....49 ea.  
Forsythia-Yellow, 1 to 2 ft. ....49 ea.  
Pink Spirea, 1 to 2 ft. ....49 ea.  
Pink Flowering Almond, 1 to 2 ft. ....89 ea.  
Tamarix-Pink, 1 to 2 ft. ....49 ea.  
Bush Honeysuckle-Red, Pink, White, 1 to 2 ft. ....49 ea.  
Red Flowering Quince, 1 to 2 ft. ....69 ea.  
White Flowering Quince, 1 to 2 ft. ....29 ea.  
Persian Lilac-Purple, 1 to 2 ft. ....69 ea.  
Old Fashioned Lilac, 1 to 2 ft. ....99 ea.  
Bridal Wreath Spirea, 1 to 2 ft. ....79 ea.  
Hydrangea P. G., 1 to 2 ft. ....49 ea.  
Oak Leaf Hydrangea, 1/2 to 1 ft. ....49 ea.  
Deutzia-White, 1 to 2 ft. ....49 ea.  
Deutzia-Pink, 1 to 2 ft. ....49 ea.  
Mockorange-White, 1 to 2 ft. ....49 ea.  
Sweet Shrub, 1 to 2 ft. ....49 ea.  
Rose of Sharon, 1 to 2 ft. ....49 ea.  
Red Ozier Dogwood, 1 to 2 ft. ....49 ea.  
Pussy Willow, 1 to 2 ft. ....49 ea.  
Pussy Willow, 4 to 6 ft. ....149 ea.  
Russian Olive, 1 to 2 ft. ....69 ea.  
Russian Olive, 2 to 3 ft. ....129 ea.  
Red Barberry, 1 to 2 ft. ....79 ea.  
Jap. Snowball, 1 to 2 ft. ....79 ea.  
Red Snowberry, 1 to 2 ft. ....49 ea.  
White Snowberry, 1 to 2 ft. ....49 ea.  
Spiraea, Anthony Waterer-Red, 1 ft. ....69 ea.  
French Lilac-Red, White, Purple, 1 to 2 ft. ....129 ea.  
Scotch Broom, 1 to 2 ft. ....49 ea.  
\*Hypericum, 1 ft. ....49 ea.  
Spice Bush, 1 to 2 ft. ....49 ea.  
Butterfly Bush-Purple, 1 to 2 ft. ....89 ea.  
Butterfly Bush-Pink, 1 to 2 ft. ....89 ea.  
Viburnum, 1/2 to 1 ft. ....49 ea.  
Green Barberry, 1 to 2 ft. ....39 ea.  
Azalea-White, Purple, Red or Pink, 1/2 to 1 ft. ....69 ea.  
\*Rose Acacia, 1 ft. ....49 ea.  
\*Red Chokeberry, 1 to 2 ft. ....29 ea.  
\*Black Chokeberry, 1 to 2 ft. ....29 ea.  
\*Hydrangea Arborvitae, 1 to 2 ft. ....29 ea.  
Winter Honeysuckle, 1 to 2 ft. ....49 ea.  
Arrowwood Viburnum, 1/2 to 1 ft. ....89 ea.  
Witchhazel, 1 to 2 ft. ....89 ea.  
\*American Elder, 1 to 2 ft. ....49 ea.  
\*Opopson Haw, 1 to 2 ft. ....99 ea.  
False Indigo-Purple, 1 to 2 ft. ....49 ea.  
Burning Bush, 1 to 2 ft. ....129 ea.  
Flowering Pomegranate, 1/2 to 1 ft. ....79 ea.

## FLOWERING TREES— 1 or 2 Years Old

Magnolia Grandiflora, 1/2 to 1 ft. ....\$89 ea.  
Magnolia Niagara, 1 to 2 ft. ....149 ea.  
Magnolia Rustica Rubra, 1-2 ft. ....149 ea.  
Mimosa-Pink, 2 ft. ....29 ea.  
Mimosa-Pink, 3 to 4 ft. ....79 ea.  
Mimosa-Pink, 4 to 6 ft. ....149 ea.  
American Red Bud, 2 to 3 ft. ....49 ea.  
American Red Bud, 4 to 6 ft. ....149 ea.  
White Flowering Dogwood, 2 to 3 ft. ....69 ea.  
White Flowering Dogwood, 4 to 6 ft. ....199 ea.  
Pink Flowering Dogwood, 1 ft. ....129 ea.  
Pink Flowering Dogwood, 2 ft. ....249 ea.  
Pink Flowering Dogwood, 3 to 5 ft. ....449 ea.  
Golden Rain Tree, 1 to 2 ft. ....99 ea.  
Golden Rain Tree, 3 to 4 ft. ....298 ea.  
Golden Chain Tree, 1 to 2 ft. ....99 ea.  
Smoke Tree, 1 to 2 ft. ....89 ea.  
Purple Leaf Plum, 1 to 2 ft. ....89 ea.  
Purple Leaf Plum, 2 to 3 ft. ....149 ea.  
Purple Leaf Plum, 4 to 6 ft. ....298 ea.  
Flowering Peach-Red or Pink, 1 to 2 ft. ....89 ea.-2 1/2 to 4 ft. ....149 ea.  
Peppermint Peach, 2 1/2 to 4 ft. ....49 ea.  
Dbl. Pink Flower Cherry, 3-5 ft. ....498 ea.  
Flowering Crab-Red or Pink, 2-3 ft. ....149 ea.-4-6 ft. ....269 ea.  
Chinese Red Bud, 1 to 2 ft. ....29 ea.  
\*Tree of Heaven, 3 to 5 ft. ....99 ea.

Dwarf Red Buckeye, 1/2 to 1 ft. ....79 ea.  
Magnolia Soulangiana, 1-2 ft. ....198 ea.  
Weeping Peach-Red or Pink, 1 ft. ....89 ea.  
Weeping Peach-Red or Pink, 2 1/2 to 4 ft. ....198 ea.  
White Flowering Peach, 2 1/2 to 4 ft. ....98 ea.  
\*White Fringe, 2 to 3 ft. ....129 ea.  
Japanese Flower Cherry, 3-5 ft. ....449 ea.  
European Mt. Ash, 3 to 4 ft. ....298 ea.  
Paul's Scarlet Hawthorn, Red Blooms, 3 to 5 ft. ....498 ea.  
\*Big Leaf Cucumber, 3 to 4 ft. ....198 ea.  
\*Paw Paw, 3 to 5 ft. ....129 ea.  
\*Sourwood, 2 to 3 ft. ....98 ea.  
Yellow Buckeye, 1 to 2 ft. ....59 ea.  
Dwarf White Buckeye, 1/2 to 1 ft. ....69 ea.  
Red Flowering Dogwood, 1 ft. ....149 ea.  
Red Flowering Dogwood, 2 ft. ....249 ea.  
Red Flowering Dogwood, 3-4 ft. ....449 ea.  
5-N-1 Flowering Crab, 3 ft. ....498 ea.  
Red Leaf Peach, 2 to 3 ft. ....149 ea.

## SHADE TREES—1 or 2 Years Old

Silver Maple, 3 to 4 ft. ....\$69 ea.  
Silver Maple, 4 to 6 ft. ....149 ea.  
Chinese Elm, 2 ft. ....199 ea.-3-4 ft. ....69 ea.  
Chinese Elm, 4 to 6 ft. ....149 ea.  
Green Weeping Willow, 2 to 3 ft. ....49 ea.  
Green Weeping Willow, 4-6 ft. ....149 ea.  
Catalpa Tree, 2 to 3 ft. ....49 ea.  
Ginkgo Tree, 1 to 2 ft. ....98 ea.  
Ginkgo Tree, 3 to 5 ft. ....129 ea.  
Pin Oak or Red Oak, 2 to 3 ft. ....129 ea.  
Pin Oak or Red Oak, 3 to 5 ft. ....198 ea.  
Willow Oak or Scarlet Oak, 2 ft. ....98 ea.  
Willow Oak or Scarlet Oak, 3 to 5 ft. ....198 ea.  
Lombardy Poplar, 1 to 2 ft. ....19 ea.  
Lombardy Poplar, 2 to 3 ft. ....29 ea.  
Lombardy Poplar, 3 to 4 ft. ....49 ea.  
Lombardy Poplar, 4 to 6 ft. ....79 ea.  
Faassen Red Leaf Maple, 3-5 ft. ....498 ea.  
Sycamore, 3 to 4 ft. ....79 ea.  
Sycamore, 4 to 6 ft. ....149 ea.  
\*Sugar Maple, 2 to 3 ft. ....98 ea.  
\*Sugar Maple, 3 to 5 ft. ....359 ea.  
Sweet Gum, 2 to 3 ft. ....429 ea.  
White Birch, 2 to 3 ft. ....98 ea.  
White Birch, 4 to 6 ft. ....298 ea.  
Tulip Tree, 2 to 3 ft. ....39 ea.  
\*Tulip Tree, 3 to 4 ft. ....169 ea.  
Crimson King Maple (Pat. No. 735), 3 to 5 ft. ....498 ea.  
Sunburst Locust (Pat. No. 1313), 4 to 6 ft. ....595 ea.  
Cut Leaf Weeping Birch, 3-5 ft. ....498 ea.  
White Ash, 3 to 4 ft. ....59 ea.  
Green Ash, 3 to 4 ft. ....59 ea.  
Persimmon, 1 to 2 ft. ....79 ea.  
Dawn Redwood, 1 to 2 ft. ....249 ea.  
Honey Locust, 3 to 4 ft. ....398 ea.  
Morain Locust, 4 to 5 ft. ....498 ea.  
Kentucky Coffee Tree, 1/2 to 1 ft. ....79 ea.  
\*American Linden Tree, 3-4 ft. ....198 ea.  
\*Sassafras, 2 to 3 ft. ....79 ea.  
\*Scarlet Maple, 4 to 5 ft. ....498 ea.  
Russian Mulberry, 2 to 3 ft. ....98 ea.  
Sycamore Maple, 1/2 to 1 ft. ....69 ea.  
\*Black Gum, 2 to 3 ft. ....79 ea.  
Japanese Red Leaf Maple, 1 ft. ....249 ea.  
Golden Weeping Willow, 2-3 ft. ....39 ea.  
Golden Weeping Willow, 4-6 ft. ....149 ea.  
Amur Cork Tree, 1 to 2 ft. ....49 ea.  
Black Locust, 2 to 3 ft. ....29 ea.  
Bald Cypress, 1 to 2 ft. ....49 ea.  
\*Little Leaf Cucumber, 2 to 3 ft. ....69 ea.

## FRUIT TREES—1 or 2 Years Old

Belle of Georgia Peach, 1-2 ft. ....\$98 ea.  
Belle of Georgia Peach, 2 1/2 to 4 ft. ....198 ea.  
Belle of Georgia Peach, 4 1/2 to 6 ft. ....298 ea.  
Elberta Peach, 1-2 ft. ....98 ea.  
Elberta Peach, 2 1/2 to 4 ft. ....198 ea.  
Elberta Peach, 4 1/2 to 6 ft. ....298 ea.  
J. H. Hale Peach, 1-2 ft. ....98 ea.  
J. H. Hale Peach, 2 1/2 to 4 ft. ....198 ea.  
J. H. Hale Peach, 4 1/2 to 6 ft. ....298 ea.  
Hale Haven Peach, 1-2 ft. ....98 ea.  
Hale Haven Peach, 2 1/2 to 4 ft. ....198 ea.  
Hale Haven Peach, 4 1/2 to 6 ft. ....298 ea.  
Dixie Red Peach, 1-2 ft. ....98 ea.  
Dixie Red Peach, 2 1/2 to 4 ft. ....198 ea.  
Dixie Red Peach, 4 1/2 to 6 ft. ....298 ea.

## DWARF FRUIT TREES— 2 or 3 Years Old

Dwarf Elberta Peach, 2-3 ft. ....\$298 ea.  
Dwarf Elberta Peach, 4-5 ft. ....495 ea.  
Dwarf Red Haven Peach, 2-3 ft. ....298 ea.  
Dwarf Red Haven Peach, 4-5 ft. ....495 ea.  
Dwarf Belle of Ga. Peach, 2-3 ft. ....298 ea.  
Dwarf Belle of Ga. Peach, 4-5 ft. ....495 ea.  
Dwarf Golden Jubilee Peach, 2-3 ft. ....298 ea.  
Dwarf Golden Jubilee Peach, 4-5 ft. ....495 ea.  
Dwarf Red Delicious Apple, 2-3 ft. ....298 ea.  
Dwarf Red Delicious Apple, 4-5 ft. ....495 ea.  
Dwarf Yellow Del. Apple, 2-3 ft. ....298 ea.  
Dwarf Winesap Apple, 2-3 ft. ....298 ea.  
Dwarf Winesap Apple, 4-5 ft. ....495 ea.  
Dwarf McIntosh Apple, 2-3 ft. ....298 ea.  
Dwarf McIntosh Apple, 4-5 ft. ....495 ea.  
Dwarf Jonathan Apple, 2-3 ft. ....298 ea.  
Dwarf Jonathan Apple, 4-5 ft. ....495 ea.  
Dwarf Lodi Apple, 2-3 ft. ....298 ea.  
Dwarf Lodi Apple, 4-5 ft. ....495 ea.  
Dwarf Cortland Apple, 2-3 ft. ....298 ea.  
Dwarf Cortland Apple, 4-5 ft. ....495 ea.  
Dwarf Northern Spy Apple, 2-3 ft. ....298 ea.  
Dwarf Northern Spy Apple, 4-5 ft. ....495 ea.  
Dwarf Yellow Trans. Apple, 2-3 ft. ....298 ea.  
Dwarf Yellow Trans. Apple, 4-5 ft. ....495 ea.  
Dwarf Montmorency Cherry, 2-3 ft. ....298 ea.  
Dwarf North Star Cherry, 2-3 ft. ....298 ea.  
Dwarf Bartlett Pear, 2-3 ft. ....298 ea.  
Dwarf Kieffer Pear, 2-3 ft. ....298 ea.  
Dwarf Burbank Plum, 2-3 ft. ....298 ea.

## VINES—1 or 2 Years Old

Red Scarlet Honeysuckle, 1 ft. ....\$59 ea.  
Wisteria, Purple, 1/2-1 ft. ....69 ea.  
Bittersweet, 1 ft. ....39 ea.  
\*Clematis Vine-White, 1/2-1 ft. ....39 ea.  
Grapes, Luttie or Niagara, 1/2-1 ft. ....79 ea.  
Grapes, Concord or Fredonia, 1/2-1 ft. ....79 ea.  
Grapes, Delaware or Catawba, 1/2-1 ft. ....79 ea.  
Kudzu Vine, 1/2-1 ft. ....29 ea.  
Gold Flame Honeysuckle, 1 ft. ....99 ea.  
\*Trumpet Creeper, 1/2-1 ft. ....29 ea.  
Yellow Jasmine, 1/2-1 ft. ....79 ea.  
\*Vince Minor Clumps, 10 ea.  
Halls Honeysuckle, 1 ft. ....29 ea.

English Ivy, 4-8 inch .....29 ea.  
Boston Ivy, 4-8 inch .....29 ea.  
Euonymus Coloratus, 1/2-1 ft. ....29 ea.  
Ajuga Bronze Ground Cover, 1 yr. ....19 ea.  
Euonymus Kewensis, 1/2 ft. ....49 ea.  
Virginia Creeper, 1/2-1 ft. ....29 ea.

## NUT TREES—1 or 2 Years Old

Hazel Nut, 1-2 ft. ....\$98 ea.  
Hazel Nut, 3-5 ft. ....198 ea.  
Butternut, 1-2 ft. ....89 ea.  
Butternut, 3-4 ft. ....198 ea.  
Chinese Chestnut, 1-2 ft. ....79 ea.  
Chinese Chestnut, 3-5 ft. ....198 ea.  
Hardy Pecan Seedlings, 1-2 ft. ....98 ea.  
Stuart Pecan-Papershell, 2 ft. ....298 ea.  
Stuart Pecan-Papershell, 3 1/2-5 ft. ....595 ea.  
Mahan Pecan-Papershell, 2 ft. ....298 ea.  
Mahan Pecan-Papershell, 3-5 ft. ....595 ea.  
Black Walnut, 1-2 ft. ....49 ea.  
Black Walnut, 3-5 ft. ....149 ea.  
English Walnut, 2-3 ft. ....498 ea.  
Shell Bark Hickory, 1-2 ft. ....98 ea.  
American Beech, Collected, 3-4 ft. ....98 ea.  
Japanese Walnut, 3-4 ft. ....198 ea.

## EVERGREENS—1 or 2 Years Old

Glossy Abelia, 1/2-1 ft. ....\$39 ea.  
\*American Holly, 1/2-1 ft. ....39 ea.  
\*Rhododendron, 1/2-1 ft. ....49 ea.  
Pfitzer Juniper, 1/2-1 ft. ....79 ea.  
Cherry Laurel, 1/2-1 ft. ....29 ea.  
Nandina, 1/2-1 ft. ....49 ea.  
Boxwood, 1/2-1 ft. ....49 ea.  
Irish Juniper, 1/2-1 ft. ....59 ea.  
Savin Juniper, 1/2-1 ft. ....59 ea.  
Red Berry Pyracantha, 1/2-1 ft. ....69 ea.  
Yellow Berry Pyracantha, 1/2-1 ft. ....69 ea.  
Burfordi Holly, 1/2-1 ft. ....89 ea.  
Dwarf Burfordi Holly, 1/2-1 ft. ....89 ea.  
Wax Leaf Ligustrum, 1/2-1 ft. ....39 ea.  
Colorado Blue Spruce, 1/2-1 ft. ....49 ea.  
\*Mountain Laurel, 1/2-1 ft. ....39 ea.  
\*Canadian Hemlock, 1/2-1 ft. ....29 ea.  
\*Short Leaf Pine, 1 ft. ....29 ea.  
Slash Pine, 1/2-1 ft. ....29 ea.  
\*Red Cedar, 1/2-1 ft. ....19 ea.  
Hetzl Holly, 1/2-1 ft. ....49 ea.  
Japanese Holly, 1/2-1 ft. ....49 ea.  
Foster Holly, 1/2-1 ft. ....79 ea.  
Helleri Holly, 1/2-1 ft. ....69 ea.  
East Palatka Holly, 1/2-1 ft. ....59 ea.  
Chinese Holly, 1/2-1 ft. ....69 ea.  
Andorra Juniper, 1/2-1 ft. ....79 ea.  
Cedrus Deodara, 1/2-1 ft. ....69 ea.  
Jap. Yew, 1/2-1 ft. ....79 ea.  
Baker Arborvitae, 1/2-1 ft. ....59 ea.  
Berkman's Arborvitae, 1/2-1 ft. ....59 ea.  
Globe Arborvitae, 1/2-1 ft. ....59 ea.  
Greek Juniper, 1/2-1 ft. ....59 ea.  
Gardena-White, 1/2-1 ft. ....69 ea.  
Camellia-Red, 1/2-1 ft. ....79 ea.  
Norway Spruce, 1/2-1 ft. ....49 ea.  
Euonymus Radican, 1/2-1 ft. ....39 ea.  
Euonymus Manhattan, 1/2-1 ft. ....49 ea.  
Euonymus Pulchellus, 1/2-1 ft. ....69 ea.  
Euonymus Dupont, 1/2-1 ft. ....39 ea.  
\*White Pine, 1 ft. ....39 ea.  
Austrian Pine, 1/2-1 ft. ....49 ea.  
Mugho Pine, 3-5 inch .....49 ea.  
Scotch Pine, 3-5 inch .....39 ea.  
Western Yellow Pine, 3-5 inch .....39 ea.  
White Spruce, 1/2-1 ft. ....49 ea.  
Serbian Spruce, 1/2-1 ft. ....49 ea.  
Douglas Fir, 1/2-1 ft. ....49 ea.  
Cleyera Japonica, 1/2-1 ft. ....49 ea.  
Elaeagnus Fruitlandi, 1/2-1 ft. ....49 ea.  
Thorny Eleagnus, 1/2-1 ft. ....49 ea.  
Hetzl Juniper, 1/2-1 ft. ....59 ea.  
Sargent Juniper, 1/2-1 ft. ....79 ea.  
Shore Juniper, 1/2-1 ft. ....79 ea.  
Yuson Holly, 1/2-1 ft. ....49 ea.  
Mahonia Beali, 3-5 inch .....49 ea.  
Gray Carpet Ground Cover, 3-5 inch .....98 ea.  
Blue Rug Ground Cover, 3-5 inch .....98 ea.

## BERRY PLANTS, ETC.— 1 or 2 Years Old

Black Raspberry, 1/2-1 ft. ....\$49 ea.  
Red Everbearing Raspberry, 1/2-1 ft. ....49 ea.  
Dewberry, 1/2-1 ft. ....49 ea.  
Boysenberry, 1/2-1 ft. ....49 ea.  
Blackberry, 2 yr., 1 ft. ....149 ea.  
Figs, 1-2 ft. ....149 ea.

## BULBS AND PERENNIALS— 1 or 2 Years Old

3 Pampas Grass, White Plumes .....\$139  
12 Hibiscus, Mellow Marvel in Mixed Colors .....139  
8 Hollyhocks, Mixed Colors, Roots .....149  
10 Cannas, Red, Pink, Yellow .....198  
20 Iris, Blue or Purple .....198  
20 Day Lilies, Roots, Orange Flwrs. ....139  
6 Fancy Leaf Caladium, Red, White .....198

50 Gladiolus, Mixed Colors .....298  
6 Candytuft (Iberis), Semp. White .....139  
6 Baby's Breath, White .....139  
6 Shasta Daisy, Alaska .....139  
6 Lupines, Mixed Colors .....139  
5 Sedium, Dragon Blood .....139  
4 Clematis, Yellow .....139  
8 Fall Asters, Red or White .....139  
8 Fall Asters, Pink or Lavender .....139  
6 Yucca, Candle of Heaven .....139  
2 Peonies, Red, Pink or White .....139  
5 Mums, Red or Yellow .....139  
3 Dahlias, Red or Pink .....139  
3 Dahlias, Purple or Yellow .....139  
3 Liriope, Big Blue .....139

## BERRIES, FRUITS AND HEDGE— 1 or 2 Years Old

10 Rhubarb, 1 year Roots .....\$198  
10 Asparagus, 1 year Roots .....100  
25 Strawberry, Blackmore or Tenn. Beauty .....198  
25 Gem Everbearing Strawberry .....200  
100 South Privet, 1-2 ft. ....398  
25 North Privet, 1-2 ft. ....398  
25 California Privet, 1-2 ft. ....398  
25 Multiflora Rose, 1-2 ft. ....498

## NATIVE WILD FLOWERS— 1 or 2 Years Old Collected from the Mountains

5 Lady's Slipper, Pink .....\$139  
6 Dutchman Breeches, White .....139  
4 Jack-in-the-Pulpit, Purple .....139  
20 Hardy Garden Violet, Blue .....139  
3 Partridge Berry .....139  
3 Passionflower .....139  
6 Bird Foot Violet .....139  
6 Trilliums, Mixed Colors .....139  
6 Blue Bells .....139  
6 Maiden Hair Fern .....139  
8 Hayscented Fern .....139  
10 Christmas Fern .....139  
4 Cinnamon Fern .....139  
3 Royal Fern .....139  
6 White Violets .....139  
6 Hepaticas, Mixed Colors .....139  
4 Solomon Seal, White .....139  
4 Sweet Williams, Pink .....139  
4 Star Grass, White .....139  
4 Golden Seal, White .....139  
6 May Apple, White .....139  
6 Cardinal Flower, Red .....139

## FLOWERING SHRUBS

10 Witch Hazel, 6-10 inch .....395  
10 Weigela Red, 6-10 inch .....198  
10 Red Bush Honeysuckle, 6-10 inch .....198  
10 Pink Spirea, 6-10 inch .....119  
10 Sweet Shrub, 6-10 inch .....119  
10 Red Flowering Quince, 6-10 inch .....198  
10 Pussy Willow, 6-10 inch .....198  
10 Deutzia, 6-10 inch .....198  
10 Jap. Snowball, 6-10 inch .....298  
10 Hypericum Ulfenborgii, 6-10 inch .....119  
10 Rose of Sharon, 6-10 inch .....119  
10 Red Ozier Dogwood, 6-10 inch .....119  
10 Forsythia Yellow, 6-10 inch .....119  
10 Pink Weigela, 6-10 inch .....119  
10 Hydrangea P. G., 6-10 inch .....198  
10 Spirea Van Houttei, 6-10 inch .....198  
10 Hydrangea Arborvitae, 6-10 inch .....198  
10 Althea Red, 6-10 inch .....119  
10 Mockorange, 6-10 inch .....119

## NUT TREES

10 Hazel Nut, 6-10 inch .....495  
10 Hardy Pecan Seedling, 6-10 inch .....495  
10 Black Walnut, 6-10 inch .....295  
10 Chinese Chestnuts, 6-10 inch .....495

## FLOWERING TREES

10 Tulip Trees, 6-10 inch .....119  
10 European Mt. Ash, 6-10 inch .....495  
10 White Flo. Dogwood, 6-10 inch .....119  
10 American Red Bud, 6-10 inch .....119  
10 Mimosa Pink, 6-10 inch .....119  
10 Black Locust, 6-10 inch .....139  
10 Golden Rain Tree, 6-10 inch .....495

## SHADE TREES

10 Black Gum, 6-10 inch .....139  
10 White Birch, 6-10 inch .....198  
10 American Elm, 6-10 inch .....119  
10 Sycamore, 6-10 inch .....119  
10 Lombardy Poplar, 6-10 inch .....119  
10 Pin Oak, 6-10 inch .....395  
10 Silver Maple, 6-10 inch .....139  
10 Chinese Elm, 6-10 inch .....119  
10 Green Weeping Willow, 6-10 inch .....198  
10 Scarlet Red Maple, 6-10 inch .....198  
10 White Ash, 6-10 inch .....119  
10 Sugar Maple, 6-10 inch .....119  
10 Sweet Gum, 6-10 inch .....119  
10 Box Elder, 6-10 inch .....139  
10 Sourwood, 6-10 inch .....139  
10 Honeylocust, 6-10 inch .....198  
10 American Hornbeam, 6-10 inch .....198  
10 Catalpa Fish Bait Tree, 6-10 inch .....198  
10 Northern Hackberry, 6-10 inch .....198  
10 Ginkgo, 6-10 inch .....495  
10 China Berry, 6-10 inch .....198  
10 Golden Weeping Willow, 6-10 inch .....198

Our plants are Nursery grown from cuttings, seeds, or budded stock unless otherwise stated. These have never been transplanted except those marked with (\*) asterisks; which means those are collected from the wild state. Inspected by the Tennessee Dept. of Agriculture. This gives you a chance to buy at lower prices. SATISFACTION GUARANTEED ON ARRIVAL OR WE WILL EITHER REFUND OR REFUND YOUR MONEY. You may order as many or as few plants as you wish. Send 98 cents extra with order for postage and packing. ORDER NOW.

**SAVAGE FARM NURSERY**

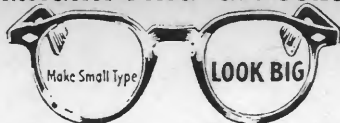
**P. O. Box 125-IL**

**McMinnville, Tennessee 37110**

Box 7160 IN Ph. 806-352-2761  
Amarillo, Texas 79109

NEW-NEW COTON and RAYON—Assorted beautiful Pastel Colors. BRAND NEW—NOT Seconds—50 Towels for \$125.00, 100 for only \$235! Super Quality. Pls. include 25c extra for pstr. & hdg. with EACH set of 50 Towels you buy. Make good money selling these Towels. We've sold 70,000,000 already and include sure-fire MONEY-MAKING Plans with your order. Money-Back Guarantee. No C.O.D.'s. Order NOW!  
**50 TOWEL CO. Dept. TO-413, Box 662, St. Louis, Mo. 63101**

## MAGNIFYING GLASSES



### A Blessing For Folks Over 40

Read newspaper, telephone book, Bible and do close work easily. SEE CLEARER INSTANTLY. Not Rx or for astigmatism or eye diseases. 10 day trial. Sturdy, good-looking. Impact resistant lenses. Frames have metal hinges. State age and sex. **SATISFACTION GUARANTEED.** Order Now. Only \$5.95 + 55¢ handling. PRECISION OPTICAL Dept. 109-S Rochelle, Ill. 61068

## If Ruptured TRY THIS OUT

### Modern Protection Provides Great Comfort and Holding Security

An "eye-opening" revelation in sensible and comfortable reducible rupture protection may be yours for the asking, without cost or obligation. Full details of the new and different Rice Support will be sent you Free. Here's a Support that has brought joy and comfort to thousands—by releasing them from Trusses that bind and cut. Designed to securely hold a rupture up and in where it belongs and yet give freedom of body and genuine comfort. For full information—write today! **WILLIAM S. RICE, Inc., ADAMS, N. Y., 13605 DEPT. 9M**

**NO OTHER  
PLAN  
LIKE OURS**

## DO-IT-YOURSELFERS BUILD YOUR HOME!

- Cut high labor costs. Build it yourself.
- Practically no down payment . . . low monthly payments.
- Build the home you want . . . where you want . . . city or country.
- Your land doesn't have to be fully paid for to start.
- You get pre-cut materials, delivery, blueprints . . . step-by-step instructions . . . some foundation materials.



Mail Coupon for the Whole Story. Start a New Life!

There's a representative near you. Phone: (309) 676-1555

**Miles Homes**

*The Do-It-Yourselfer's Friend*

Send me your **FREE** New 1975 Great Homes Idea Book **MILES HOMES, Dept. IL-31**  
423 1st. Nat'l Bank Bldg. Peoria, Ill. 61602

Name \_\_\_\_\_  
Address \_\_\_\_\_  
City \_\_\_\_\_ State \_\_\_\_\_ Zip \_\_\_\_\_  
Phone ( ) \_\_\_\_\_

**Special Offer-**



A Ring of your choice OR Cash for selling or buying only 6 boxes of Rosebud Salve, 6 boxes of Tholene menthol Salve, 6 bottles of Vivian Perfume (with Myrrh), 6 bottles of Bouquet No. 3 Perfume (with Jasmin) at 85¢ each. Order must total \$5.10 worth of products. Co. Estb. 1895 DEALER'S INQUIRY INVITED for products.

ROSEBUD PERFUME CO. Dept. H-95

WOODSBORO, MARYLAND 21798

Discovered By Medical Research

# THE RICE DIET

## It's A Healing Diet As Well As A Reducing Diet

The famous Rice Diet wasn't even designed for taking off fat. It was created as a healing diet. And heal it does.

### The Rice Diet Contains No Cholesterol

Medical Research has acclaimed a no-fat diet as being of paramount aid in the treatment of certain heart and kidney conditions. Scientists also advocate this program as the basis of a general reducing diet.

The health value of this diet is founded upon the fact that it contains no cholesterol — which many doctors believe dangerous to the heart, kidneys, and blood circulation.

### The Diet Reverses Much Damage Done By Heart Disorders

Twenty-five years ago our medical establishment was extremely skeptical of the startling discovery that the Rice Diet reverses much of the damage done by blood vessel, eye, heart, and kidney disorders. Without any medication other than a prolonged diet largely composed of unsalted rice, some enlarged hearts grew smaller; blood pressures and blood sugar dropped.

### Claims For The Rice Diet Verified By Teams Of Doctors

Teams of doctors from leading institutions around the world investigated the diet. They thought that they would scoff at the claims, but they applauded instead. "The question now," concluded a report in one eminent medical journal, "is not 'Does the diet work?' The question is 'How does it work?'"

## Famous People Have Endorsed The Results Of Rice Dieting

"I truly would have died if I hadn't gone" on a program of rice dieting, says the wife of a former state governor. "I was seriously ill and weighed 230 pounds." She dropped 80 pounds in 19 weeks, and her blood sugar plummeted as well. (Since the diet is largely carbohydrate, this is one of the mysteries of it.)

A famous singer and movie actor, on the other hand, got hooked on the taste of the diet and lost 80 pounds, too. He still follows the diet every day. Before the Rice Diet, he had been on a high-protein diet for ten years or so: "I used to have to put down a pound of steak before a recording," he says. "Now, I can eat a little rice and sing like a bird."

### Here's What You'll Receive:

The complete program brings you essential information and dozens of delicious menus and easy recipes for breakfast, lunch, and dinner.

To: Diet Research, Inc.  
Box 91189-MC  
Atlanta, Ga. 30344

Order Your Copy of "The Rice Diet" Now! Satisfaction Guaranteed or Your Money Back.

□ Send me your booklet, "The Rice Diet," which includes the basic program. I enclose \$2.00.

□ Send me the above program plus extra menus, recipes, and information. I enclose \$3.00 for this complete program.

Name \_\_\_\_\_

Address \_\_\_\_\_

City \_\_\_\_\_ State \_\_\_\_\_ Zip \_\_\_\_\_



**"T**he future is up there," Gene Seibert, manager of Southern Illinois Airport said, pointing to the sky. "It'll take us as high and as far as we want, but not without hard work and cooperation."

If the sophisticated aerial display exhibited during the airport's open house and air show held recently is any indication of what hard work and cooperation can do, then the sky is certainly the limit for this thriving air crossroads located near Carbondale.

A two-day crowd of nearly 35,000 squinted skyward in 90 degree heat as everything but the kitchen sink took to the air to commemorate the airport's 25th anniversary.

By far the most popular event of the three-day Carbondale Friendship Festival was the air show featuring the U. S. Navy's Blue Angels flight demonstration team and the Red Devils, the world's only civilian aerobatic team. Both presented a spectacular program of stunt and precision flying in jet and propeller-driven aircraft.

The Red Devils, led by reigning World Aerobatic Champion Charlie Hillard of Ft. Worth, Texas, kicked off the show, maneuvering their three tiny Pitts Special biplanes through an exciting routine of formation loops, rolls and bomb-bursts at speeds up to 200 miles per hour.

One of the newest and freshest stunt flying groups to appear on the aviation scene in recent years, the Red Devils combine the talents of Hillard, left wing Gene Soucy of Burlington, Wisconsin, U. S. National Aerobatic Champion in 1970-71-72, and Tom Poberezny from Milwaukee, Wisconsin, 1973 U. S. National Aerobatic Champion.

A demonstration of a Hawker-Siddley AV 8A vertical takeoff jet was next, followed by a flying collection of vintage military aircraft including a World War I Fokker D-VII, and two movie stars—a Japanese Zero built for "Tora, Tora, Tora," and a Grumman Wildcat used in "The Battle of Midway."

Snoopy and his radio controlled Flying Doghouse, created by Albin Signorino of Bridgeton, Mo., was on hand for a dogfight against a

radio controlled German biplane 400 feet above the crowd.

Finally, six sleek McDonnell Douglas A-4 Skyhawk jets piloted by the Navy's Blue Angels launched their supersonic exhibition with four jets performing in diamond formation while two others completed solo aerobatics. Spectators who dropped their gaze for even an instant were likely to miss the two Angel solo pilots making one of several near collision passes only a few hundred feet above the runway at nearly 500 miles per hour.

As the soloists returned to formation the Angels performed a five-aircraft stinger diamond, then a six-aircraft delta roll. The Angels piloted their \$750,000 Skyhawks through back-to-back maneuvers and eight-point hesitation rolls with the perfection of total teamwork that, according to Navy literature, "has paid off for Americans in actual battles, from Midway to Vietnam."

This performance marked the 29th anniversary of the Blue Angels who flew their first flight demonstration in 1946. It is only one of 45 performances scheduled for the Angels this year at an estimated cost of \$2.8-million.

Blue Angel pilots are regular Navy and Marine Corps career officers, between the ages of 26 and 36, with at least 1,000 hours of flying time in tactical jet aircraft. In addition to being exceptional pilots, they must be able to live and work closely with teammates for extended periods of time without friction.

The normal tour of duty is between two and three years. Only two openings on the squad are available each year for which there are usually about 40 or 50 applicants.

Hard work and cooperation, key factors behind the highly successful air show, have been basic to Southern Illinois Airport's history from the very beginning in June, 1950.

Seibert remembers that era well. The development of Murdale Airport (dubbed Southern Illinois Airport on March 26, 1957) was a cooperative venture between the business communities of Carbondale and Murphysboro and Southern Illinois

*(Continued on page 29)*

# Southern



# Illinois Airport Comes of Age



CLOCKWISE FROM TOP: Blue Angel Commander Tony Less dismounts from the cockpit of his praying mantis-like jet after a flight demonstration. This photo isn't upside down—it's one of the Red Devils showing off some of the skillful maneuvers which have earned them the title of World Aerobatic Champions. Throngs of spectators exhibited their eye squinting and neck craning abilities as stunt flyers buzzed the airport. Sleek, shining and totally supersonic—the Blue Angels' six A-4 Skyhawks await their turn to shoot holes in the sky above Southern Illinois Airport.

# DINNER *for*

## CORNISH GAME HENS WITH CHEESY RICE STUFFING

- |  |                                    |
|--|------------------------------------|
| 1 can (2 oz.) mushrooms, drained and chopped | 1/4 cup (1/2 stick) butter         |
| 1 cup (4 oz.) shredded Cheddar cheese        | 1/3 cup regular rice               |
| 2 1-pound Cornish Game Hens                  | 2 tablespoons diced celery         |
| Salt   | 2 tablespoons finely chopped onion |
| Pepper                                       | 1 cup chicken broth                |
| Melted butter                                |                                    |

In a 1 1/2-quart saucepan melt butter; add rice, celery and onion. Cook 5-10 minutes, stirring frequently. Add chicken broth and bring mixture to a boil. Cover and simmer over low heat about 20 minutes or until liquid is absorbed and rice is fluffy. Stir in mushrooms. Cool. Toss cheese lightly with cooled rice mixture. Meanwhile season birds inside with salt and pepper. Stuff birds with rice mixture. Place on rack, breast side up in shallow baking pan. Baste with butter. Loosely cover with foil. Roast in preheated 400 degree oven for 30 minutes. Remove foil; continue roasting for 45 minutes uncovered or until done. Occasionally baste with butter during last 45 minutes of roasting.

NOTE: Any additional stuffing may be placed in small baking dish, covered and baked during last 45 minutes of roasting time. Remove cover for last 15 minutes.

## TODAY AND TOMORROW GELATIN SALADS

### LIME GELATIN BASE:

- |   |                                 |
|---|---------------------------------|
| 3/4 cup hot water                       | 2 tablespoons fresh lemon juice |
| 1 package (3 oz.) lime-flavored gelatin | 3/4 cup dairy sour cream        |

### COTTAGE FRUIT SALAD:

- |  |                               |
|--|-------------------------------|
| 3/4 cup (8-oz. can) crushed pineapple, drained | 2 tablespoons chopped walnuts |
| 1/3 cup cottage cheese                         | 2/3 cup gelatin base          |
|  | Maraschino cherries           |

### SWEET 'N' SOUR VEGETABLE SALAD:

- |                                      |                    |
|--------------------------------------|--------------------|
| 1/2 cup shredded carrots             | Dash of salt       |
| 1/4 cup diced celery                 | 1 cup gelatin base |
| 2 tablespoons pickle relish, drained | Carrot curls       |

To prepare Gelatin Base: In a small bowl pour hot water over gelatin; stir until dissolved. Cool to room temperature; stir in

lemon juice. Blend in sour cream. Yield: 1 3/4 cups.

To prepare Cottage Fruit Salad: Toss together pineapple, cottage cheese, and nuts. Add 3/4 cup gelatin base; mix well. Divide into two 1 cup salad molds. Cover and chill until set. Unmold on salad greens. Garnish with maraschino cherry. Makes 2 servings.

To prepare Sweet n' Sour Vegetable Salad: Toss together lightly carrots, celery, pickle relish and salt. Add 1 cup gelatin base; mix well. Divide into two 6-oz. salad molds. Cover and chill until set. Unmold on salad greens. Garnish with carrot curls. Makes 2 servings.

## ORANGE CREAM PIE

- 1 baked pie shell, 5-inch

### FILLING:

- |                        |
|------------------------|
| 1/4 cup sugar          |
| 5 teaspoons cornstarch |
| Dash of salt           |
| 2/3 cup milk           |

### MERINGUE:

- |                              |
|------------------------------|
| 1 egg white                  |
| 1/4 teaspoon vanilla extract |

- |                                 |
|---------------------------------|
| 1 egg yolk, slightly beaten     |
| 1 tablespoon butter             |
| 1/2 teaspoon grated orange peel |
| 4 teaspoons orange juice        |

- |                         |
|-------------------------|
| Dash of cream of tartar |
| 2 tablespoons sugar     |

To prepare Filling: In a 1-quart saucepan combine sugar, cornstarch and salt; gradually add milk. Cook over medium heat; stirring constantly, until thickened. Cook 2 additional minutes. Blend a small amount of hot mixture into egg yolk; return all to pan. Cook 1 minute. (Do not boil.) Remove from heat; add butter, orange peel and juice. Pour into pie shell. Cover top with Meringue. To prepare Meringue: Beat egg white until frothy. Add vanilla and cream of tartar and beat until soft peaks form. Add sugar, 1 tablespoon at a time, and continue beating until stiff peaks form. Mound onto pie filling, making certain that meringue covers filling completely and is sealed to crust. Bake in preheated 350 degree oven 8 to 10 minutes or until meringue is golden. Cool on wire rack. Chill before serving. Makes 2 servings.

NOTE: Four 3-inch prepared tart shells can be substituted for 5-inch pie shell.







# with a vintage touch of grape



## TUNA 'N FRUIT SALAD

- 1 unpeeled apple
- 1 cup chopped celery
- 1 can (7-oz.) tuna fish, drained
- 1 tablespoon lemon juice
- 1 cup grapes, halved and seeded
- ¼ teaspoon salt
- 1 can (13½-oz.) pineapple tidbits
- 1 cup dairy sour cream yogurt

Combine apple, tuna, grapes, drained pineapple and celery. Blend lemon juice and salt into sour cream, fold into fruit mixture. Serve on salad greens, top with chopped walnuts or mint.

## GRAPE AND CHICKEN MOLD

- 2 envelopes unflavored gelatin
- ¼ cup fresh lemon juice
- ½ cup cold water
- 2 cups whole seedless green grapes or seeded grape halves
- 1½ cups hot chicken bouillon
- 1/3 cup sugar
- 2 cups diced cold cooked chicken
- ¼ teaspoon salt
- 1 cup mayonnaise

Soften gelatin in cold water. Stir in chicken bouillon, sugar, salt, and lemon juice. Chill until the mixture is slightly thick. Fold in grapes, chicken and mayonnaise. Fill a 2-qt. chilled mold with mixture. Chill until ready to serve. Unmold onto serving plate. Garnish with fresh grapes and mint leaves.

## GRAPE APPLES

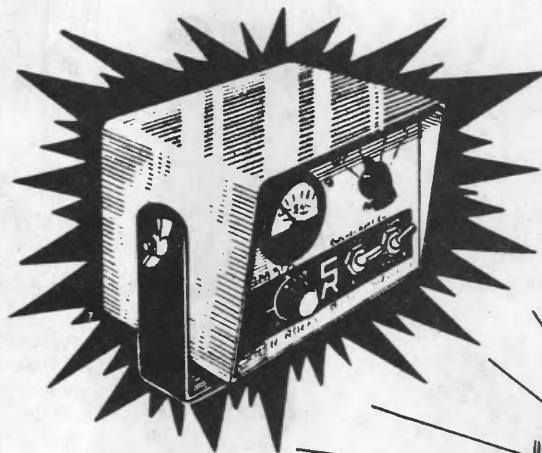
Bring to boil one cup grape juice, dash of salt, and 2/3 cup sugar, boil 5 minutes. Peel and core 6 tart apples, add to saucepan with grape mixture. Cover, simmer for 10-15 minutes or until tender, basting with some of syrup. Serve warm or chilled with whipped cream.

## GRAPE SPONGE

- 1½ tablespoons unflavored gelatin
  - 1½ cups grape juice
  - 1/3 cup cold water
  - 4 tablespoons lemon juice
  - 1/2 cup boiling water
  - 3 egg whites
  - 3/4 cup sugar
  - 1 cup heavy cream
  - 1/8 teaspoon salt
- Soften gelatin in cold water, dissolve in

hot water. Add sugar and salt. Cool slightly. Add grape juice and lemon juice. Chill until jelly-like. Beat egg whites to soft peak stage. Whip cream until thick. Whip grape juice mixture until frothy and smooth, fold in whipped cream. Fold mixture slowly into egg whites. Pour into 1-qt. mold or individual molds, let stand until set.

## FARMER AGENTS WANTED



**COMBINE  
GRAIN  
MONITOR**

*Harvest Faster  
- and save more grain  
for the bin*

*- plus 150  
'in demand' items*

*Send  
for details  
Today*

- ☐ How can I become a Farmer Agent ?
- ☐ Send Literature on Combine Grain Monitor

NAME .....

ADDRESS .....

SMITH-ROLES INC.

3000, South Lawrence Rd., WICHITA, KS. 67217

# PRINTED PATTERNS

## TO ORDER PATTERNS:

Send \$1.00 in coin for each pattern to:  
Patterns, Illinois Rural Electric News  
P. O. Box 3787  
Springfield, Illinois 62708

(Please allow three weeks for  
delivery from New York.)



9491  
SIZES 8-20



9168 TEEN  
10-16



9426 SIZES 8-18



9082  
SIZES 34-48



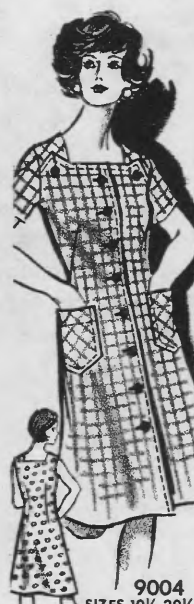
9203 6-20  
40-44



9117  
6-14



9449 8-18



9004  
SIZES 10½-20½



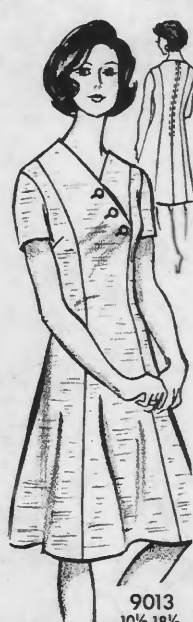
9061  
10½-20½



9495  
10½-22½



9076



9013  
10½-18½

- No. 9491 is cut in sizes 8, 10, 12, 14, 16, 18, 20. Size 12 (bust 34) takes 1⅞ yards 54-inch; dickey ⅝ yard 45-in.
- No. 9168 is cut in Teen sizes 6, 8, 10, 12, 14, 16. Size 10 (bust 32) pants, jacket 2⅝ yds. 60"; top 1 yd. 45".
- No. 9429 is cut in sizes 8, 10, 12, 14, 16, 18. Size 12 (bust 34) jacket 2¼ yards 45-inch; pants 2⅝.
- No. 9082 is cut in sizes 34, 36, 38, 40, 42, 44, 46, 48. Yardages in pattern.
- No. 9203 is cut in sizes 6, 8, 10, 12, 14, 16, 18, 20; Women's sizes 40, 42, 44. Yardages in pattern.
- No. 9117 is cut in sizes 6, 8, 10, 12, 14. Size 10 top takes 1⅝ yards 45-inch; pants 1½ yards.
- No. 9449 is cut in sizes 8, 10, 12, 14, 16, 18. Size 12 (bust 34) takes 3⅞ yards 45-inch fabric.
- No. 9004 is cut in sizes 10½, 12½, 14½, 16½, 18½, 20½. Size 14½ (bust 37) takes 2¼ yds. 60-inch.
- No. 9061 is cut in sizes 10½, 12½, 14½, 16½, 18½, 20½. Size 14½ (bust 37) takes 2¼ yards 60-inch.
- No. 9495 is cut in sizes 10½, 12½, 14½, 16½, 18½, 20½, 22½. Size 14½ (bust 37) 2½ yards 54-inch. Transfer.
- No. 9076 is cut in sizes 34, 36, 38, 40, 42, 44, 46, 48; Half sizes 10½, 12½, 14½, 16½, 18½.
- No. 9013 is cut in sizes 10½, 12½, 14½, 16½, 18½. Size 14½ (bust 37) takes 2¾ yards 45-inch.

# S. Illinois Airshow

(Continued from page 24)

University-Carbondale. From a staff of seven and only six planes the airport has grown to base 95 aircraft with 171 full-time employees.

Today 12 community businesses located at the airport generate capital amounting to \$5.6-million a year. By 1995, the facility is predicted to be worth \$11.6-million. Much of the airport's traffic comes from SIU's Air Institute and Service Division which maintains a flight training program and aeronautical engineering courses as part of their student curriculum.

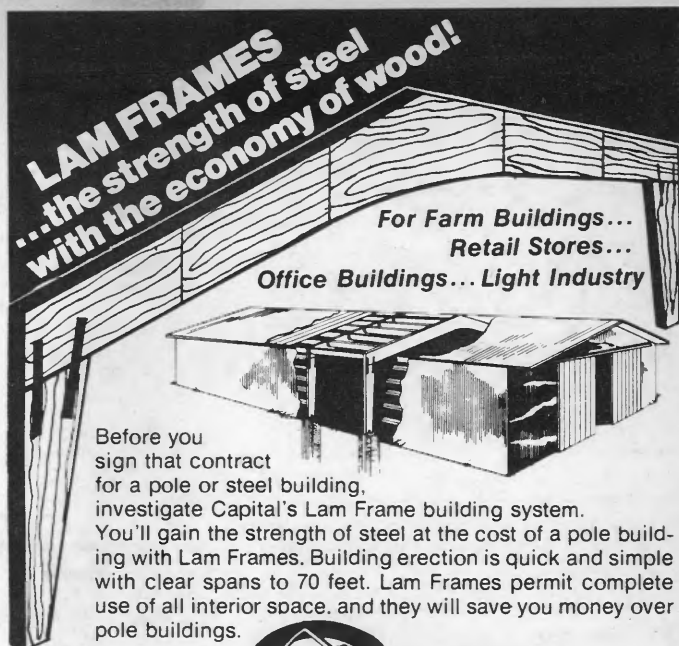
Yet another vital link in the continuing development of the facility is the airport's power supplier, Egyptian Electric Cooperative Association with headquarters in Steeleville and Murphysboro.

Adequate electric energy combined with quality education and modern air transportation are major factors which have contributed to the rapid growth and economic development of Southern Illinois Airport and the Carbondale-Murphysboro community. Without the hard work and cooperation of these community businesses, the airport might still be what it was considered to be a quarter of a century ago—"a haven for half-crazed puddle-jumpers."

**LAM FRAMES**  
...the strength of steel  
with the economy of wood!

For Farm Buildings...  
Retail Stores...  
Office Buildings... Light Industry

Before you sign that contract for a pole or steel building, investigate Capital's Lam Frame building system. You'll gain the strength of steel at the cost of a pole building with clear spans to 70 feet. Lam Frames permit complete use of all interior space, and they will save you money over pole buildings.




Please send information on Capital's Lam Frame building system, and the name of my nearest Lam Frame dealer.

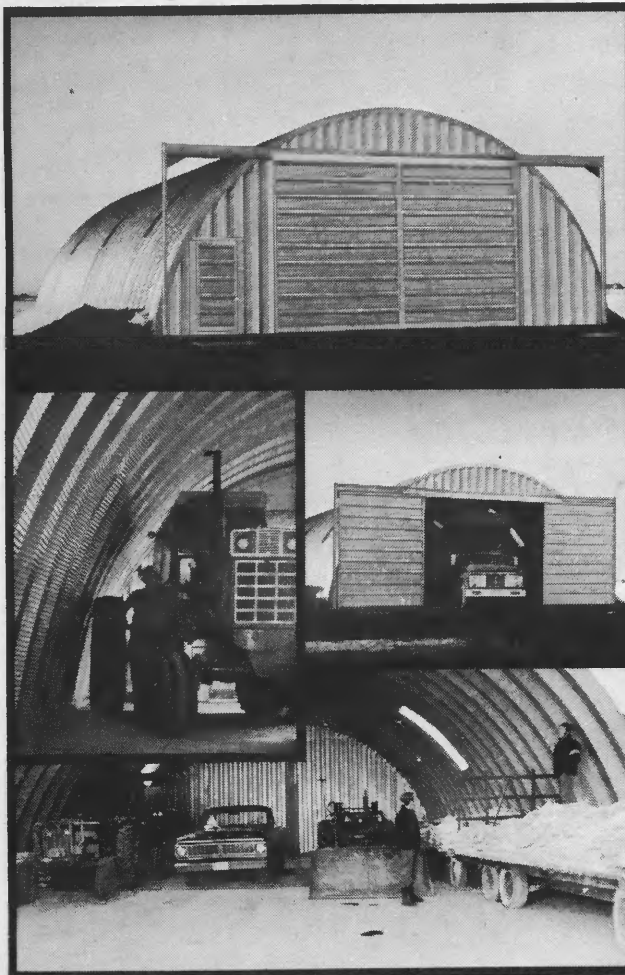
NAME \_\_\_\_\_

ADDRESS \_\_\_\_\_

CITY \_\_\_\_\_

STATE \_\_\_\_\_ ZIP \_\_\_\_\_

BOX 830 HURON, S.D. 57350 PH. 605-352-6457



## It all adds up...

### STRENGTH

Rugged galvanized steel panels with deep 7½" corrugations provide tremendous structural strength eliminating the need for poles, beams or trusses. Equipment can be stored next to the wall with head room to spare—100% usable space.

### ACCESS

Large doors up to 24' wide x 14' high have ball bearing rollers for ease of operation allowing easy access for even the largest combines (doors can be supplied for both ends). Standard size all steel man doors are also available.

### VERSATILITY

IDEAL FOR: Machine Sheds, Grain Storage Units, Livestock Shelters, Workshop, Corn Storage, Hog Barns, Livestock Confinements or Dairy Barns

### IT ALL ADDS UP TO...

A dependable all steel building for your investment. We can manufacture any dimension to suit your needs now or in the future.

CALL COLLECT OR MAIL COUPON TODAY

NAME \_\_\_\_\_  
ADDRESS \_\_\_\_\_ TEL. \_\_\_\_\_  
CITY/TOWN \_\_\_\_\_ STATE \_\_\_\_\_ ZIP CODE \_\_\_\_\_  
DATE PLANNING TO BUILD \_\_\_\_\_  
SIZE OF BUILDING—WIDTH \_\_\_\_\_ X LENGTH \_\_\_\_\_

## MIRACLE SPAN STEEL BUILDINGS

Box REN-9-75  
1821 North Office Square, Schaumburg, Illinois 60172  
Call Collect (312) 397-0700







Reaching Over 500,000  
Consumers Each Month

## • Auction Schools

REISCH WORLD WIDE COLLEGE OF AUCTIONEERING, INC. 41 years World's Largest. Terms soon. Free catalog. Mason City 17, Iowa.

## • Business Opportunities

EARN MONEY raising fishworms for us! Exciting details free! Oakhaven-99, Cedar Hill, Texas. 75104.

Management personnel or dealer wanted in your area for an agricultural company. \$30,000 per year possible. Little competition. Full or part time. Call for appointment, after 5 p.m. Telephone (618) 532-0685 or write P.O. Box 176, Centralia, Ill. 62801. Northern Illinois, Al Friedman, regional manager Telephone (815) 692-2591.

## • Of Interest To Women

OVERWEIGHT?—I lost 53 pounds, Easy, (Permanently!)—New Method. Information free—Helen, Box 5309-A-9, Santa Monica, California 90405

CLOTHING FACTORY CUTAWAYS, 10 lbs. assortment for Quilts. Doll clothes, Throw pillows, etc. \$5.56 postpaid. Cutaway, Box 151-L, Weaubleau, Mo. 65774.

RECIPES for happiness, weight-loss and beauty aids. Free information. Send self-addressed stamped envelope to Dr. N. Martin, R.R. 3, Lawrenceville, Ill. 62439.

WICKER FURNITURE—all kinds. 6000 baskets Chair Cane, Reed, Rush, Rattan, Spline. BASKET SHOP, Danville, Indiana 46122.

Recipes from the Days of Grandma's Cookin Range. Choose from Breads, Desserts or Vegetables. \$1.50 each. Grandma's Recipes, Box 303, Newton, Ill.

FAVORITE CANNING RECIPES! Zucchini pickles, Jar Sauerkraut, Catchup, Greentomato dillpickles, Ripe tomato Relish \$1.00, Hamiltons, Box 233-41 New Ulm, Minn. 56073.

HOMEMADE CHEESE! HARD, SOFT & COTTAGE! Make it yourself! Easy, delicious! Complete instructions! Recipes, \$1.00 Hamiltons, Box 233-41, New Ulm, Mn. 56073.

ORIGINAL GERMAN Gingerbread House to delight children and friends for Christmas. Recipe, Pattern, Picture, Easy-to-follow Instructions. \$2.00. CATALINA, Box 34-115/RIL, Bethesda, Md.

Frozen Cabbage, Slaw recipe. Paper Bag Apple Pie Recipe \$1.00. Mrs. John Leonard R. R. #1, Chatsworth, Ill. 60921.

DUTCH SALT PICKLES DILL. Easy to make. Delicious, Old Home Recipe \$1.00. Sylvia Boyle, Cuba City, Wis. 53807.

DIABETIC? ON DIET? Want some real treats? Sugarfree cakes, cookies, pies, fudge, cobbler, sherbert, jam, Cheesecake. Send \$1.00. Carol-IE Gonshorowski, 2670 Jackson, Eugene, Oregon 97405.

Garment Factory cutouts, 10 lb. shipment ass'd. Make quilts, patch work jackets, pants, pillows, doll clothes and etc. \$5.95 postpaid. The Stitchery, RFD #5, Marion, Ill. 62959.

## • Farms, Real Estate

BIG ... NEW ... FREE ... FALL CATALOG! 272 pages! Over 2,600 top values in FARMS, RANCHES, ACREAGES, RECREATIONAL PROPERTIES, BUSINESSES, TOWN and COUNTRY HOMES coast to coast! UNITED FARM AGENCY, 1304-RN Consumers Bldg., 220 So. State St., Chicago, Ill. 60604.

## • Farm Machinery, Equipment

### TRENCHERS

New and Used—\$750 and up.

Ozark Trencher Sales

107 Troy Road, Collinsville,

Ill. 62234. Phone 618-345-6262

Lease purchase Farm Equip. Dairy, Beef, Hog Systems, Trucks, Dairy cattle. FARM-AG-LEASE, Dave Kurschner 122 Atlantic Ave. Atwater, Minn. 56209. Telephone (612) 974-8833.

## CHAIN SAW CHAIN

TOP QUALITY • TREMENDOUS SAVINGS!



Get lowest prices on professional-quality chain in loops and reels, hardnose and sprocketnose bars, other saw parts, files, grinders, wedges, all types saw equipment.

Money-back guarantee. Free Catalog

Write today to:

ZIP-PENN CATALOG OFFICE

Box 43073 D-66 Middletown, Ky. 40243

## • Plants & Trees

Stratified Ginseng Seed—Giant Canadian Origin for fall planting. \$25.00—pound, approximately 7000 seeds. Planting roots, yearlings \$10.00—hundred, \$80.00—thousand, 2 yr.—\$18.00, 3 yr.—\$20.00 or larger \$25.00. Instructions included with order. Small acreage or woodland could become your goldfield. John Batz, Pittsfield, Illinois 62363.

GINSENG SEEDS, For planting. Over \$6,000 possible growing ¼ acre. For information, price list. Write: Blueridge Ginseng, Rt. 7, Ft. Payne, Ala. 35967.

Ginseng and other roots wanted. Write for price list. St. Louis Commission Co., Dept. 2, 4157 No. Kingshighway, St. Louis, Mo. 63115.

## • Photo Finishing

QUALITY DEVELOPING OF KODACOLOR FILM to Kodak's highest standards of quality. Introductory special—126 or 110-12 exposure \$1.50, 20 exposure \$2.50. Kodacolor reprints 5 for 99¢ Professional borderless silk finish. PDQ Photofinishers, Box 15050-11, St. Louis, Mo. 63110.

## • Decals-Signs-Badges

DECALS, NAMEPLATES, Badges, Trucksigns. Hard-hat labels. All kinds. Seton Nameplate Corp. Dept. IR, New Haven, Conn. 06505.

## • For Sale

Motor generator unit, model 10A-D176PB—10 kilowatt, 12½ KVA, 120-140 volt, 60 cycle generator driven by a Le Roi Wisconsin four cylinder gas engine with 3¼ inch bore by 4-inch stroke. Unit used 200 hours. Installed within its own mounting, 2 by 6-foot on floor space. Ideal motor generator unit for standby power interruption or where central station power is not available. Contact Arthur H. Peyton, 1209 W. Calhoun, Macomb, Ill. 61455 Tele.: (309) 833-2778.

SURPLUS BARGAINS—War, government, industrial surplus at savings at 80%! Clothes, boots, cots, tents—bargains for farm home, outdoors. SEND FOR FREE CATALOG—must give zip code. SURPLUS STORE, Sioux Falls, S.D. 57102.

## • Hunting and Fishing

COLLAPSIBLE Farm-Pond-Fish-Traps: also turtle, Muskrats and small animals—Free delivery. Shawnee, 39340 Buena Vista, Dallas, Texas 75204.

### TRAPPERS & HUNTERS

Send for 1975-76 Trappers & Outdoorsman Catalogue. Complete line of Trapping Supplies, Kohler Wheatlites, Carhartt clothing, Boots, Stretchers. All needed items. Write for our fur price list this fall. ED BAUER FUR CO., SMITHBORO, IL 62284.

Trained Coon Hounds also Started Hounds sold here only. Glen & Bill Fiscus, Gosport, Indiana, R. #1, 47433. Phone 879-2873.

## • Miscellaneous

GOSPEL PIANISTS: Add chords, "runs," progressions, Twenty Lessons, "Playing Evangelistic Style Piano," \$4.98. Evangelical Music, IREA-1, Hawarden, Iowa 51023

### WILL FORMS

"Make Your Own Will Easily!"

Ready to fill in. Only \$2.00

(2 for \$3.50)

FORMS, P. O. BOX 3609

New Haven, Ct. 06525

## • Help Wanted

Homeworkers needed in this area to lace leather goods at home. No experience necessary. Earn \$150 per week. Send \$1.00 (refundable) and long stamped envelope to Appalachian Leather Goods, 100 Main St., Williamsville, Va. 24487.



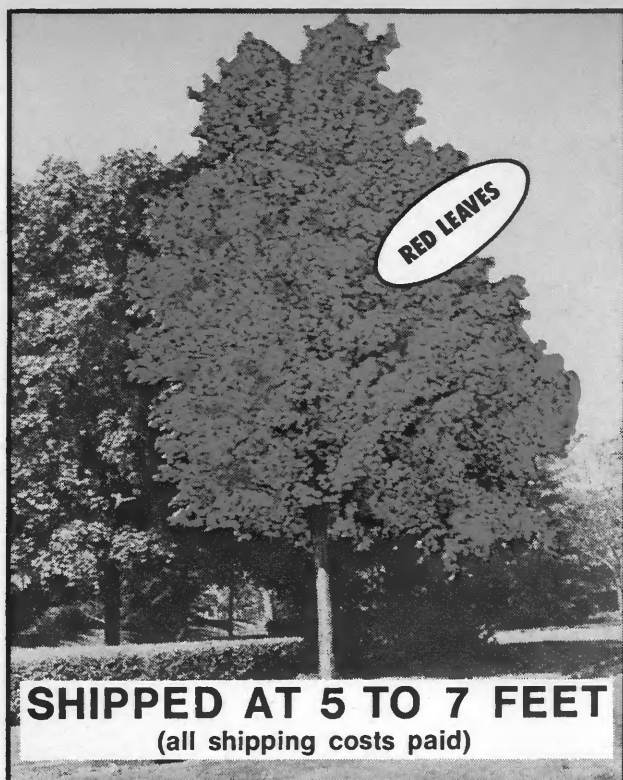
ORDER FORM illinois rural electric news

Please enter my name as a subscriber to IREN magazine. I am enclosing \$2 for each one-year subscription.

name

address

zip



**SHIPPED AT 5 TO 7 FEET**  
(all shipping costs paid)

ACTUAL PHOTOGRAPH OF A FIVE YEAR SCARLET MAPLE. (ACER RUBRUM)

- This gorgeous tree is known as the scarlet maple, red maple, or the EVER CHANGING MAPLE.
- Beautiful Red Scarlet leaves in the fall of the year, and beautiful deep dark green leaves in the spring of the year.
- Grows approximately up to 25-30 feet over a five year period, which makes it one of the fastest growing shade trees in America today.
- Many landscape architects and nursery men refer to this native tree as the "2 in 1" tree, because of its dual qualities of beauty and speed and you won't have to wait long for shade because we ship these beautiful trees at 5 to 7 feet.
- **Adaptability** — "The scarlet maple has one of the widest ranges of our native trees, growing from eastern central Canada to Florida, and because of its ease of transplanting it adapts to any type of soil." (From **All About Trees** by E. Johnson.) The one tree experts agree will grow anywhere in the U.S.A.

### OUR PRICES

We guarantee our price to be the best possible and if you find any of these trees advertised for less, (same size and variety) we will refund the difference plus give you a free gift of your choice from our catalogue. How can you lose?

### BONUS TREES

You may purchase up to as many bonus trees as you do shade trees — for example if you purchase 4 shade trees you may order either 1-2-3 or 4 bonus trees or none. Each bonus tree costs only .50¢ each in any combination. All bonus tree orders must be placed at the same time as the shade tree order.

## 3 YEAR GUARANTEE

All trees including bonus trees are guaranteed to live and if by mere chance any fail to live they will be replaced free of charge for three years.

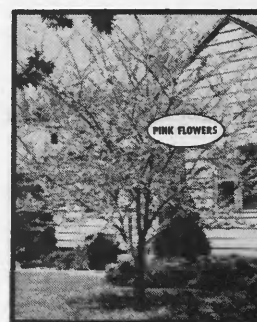
UNQUESTIONABLY THE MOST  
**BEAUTIFUL**  
FAST GROWING  
**SHADE TREE**  
**LESS \$200 each**  
**THAN** IN LOTS OF 16

**FANTASTIC 50c BONUS OFFER**

**ALL BONUS TREES SHIPPED AT 4 TO 6 FT.**



**White Dogwood (cornus florida)** This beautiful flowering tree has large white blossoms, and can be seen in all parts of the country. Its foliage is attractive all summer and has beautiful fall colors, as the red berries hang on most of the winter. Grows to 25 feet. (shipped at 4 to 6 feet).



**Red Bud (cercis canadensis)** This beautiful flowering tree is native to both the north and south and thereby extremely hardy. It blooms at the same time as the dogwoods and its gorgeous pink flowers form a lovely combination with the dogwoods. Grows to 25 feet. (shipped at 4 to 6 feet).

TO BEAUTIFY YOUR HOME NOW ORDER  
TODAY ON A THREE YEAR GUARANTEE.

Imagine! These beautiful trees shading your home and the lovely contrast it will give the surroundings, and will bring praise and admiration from everyone. ORDER TODAY DURING THIS PLANTING SEASON AT OUR SPECIAL PRICES AND BONUS OFFERS.

### NURSERY BARN

P.O. Box 712  
McMinnville, Tennessee 37110

**ALL  
SHIPPING  
PAID**

Please send us the number of these beautiful red maples as indicated below on a three year guarantee. Also we understand we may purchase up to as many bonus trees as we do shade trees at only .50¢ extra per tree if we desire. However we are under no obligation to buy any. All orders will be acknowledged and shipped at proper time in my area.

<input type="checkbox"/> 2 RED MAPLES.....\$ 7.98	<input type="checkbox"/> 8 RED MAPLES.....\$22.98
<input type="checkbox"/> 4 RED MAPLES.....\$12.98	<input type="checkbox"/> 16 RED MAPLES.....\$31.98
<input type="checkbox"/> 6 RED MAPLES.....\$17.98	

AMOUNT OF RED MAPLE ORDER \$ \_\_\_\_\_  
SEND \_\_\_\_\_ BONUS TREES  
@ ONLY .50¢ EACH..\$ \_\_\_\_\_  
ADD SALES TAX \_\_\_\_\_  
WHERE APPLICABLE .....\$ \_\_\_\_\_  
GRAND TOTAL ENCLOSED BY \_\_\_\_\_  
☐ CASH ☐ CHECK ☐ M.O. ....\$ \_\_\_\_\_

### BONUS TREES

HOW MANY VARIETY  
\_\_\_\_\_ W. DOGWOOD  
\_\_\_\_\_ REDBUD

Name \_\_\_\_\_  
Address \_\_\_\_\_  
City \_\_\_\_\_  
State \_\_\_\_\_ Zip \_\_\_\_\_

☐ Check here for free fund-raising literature for your club, church or organization. No obligation of course.

# AMAZING MONEY-SAVING OFFERS

**For Fall Planting**

**FREE** No Extra Cost with our Feature Tulip Bulb offer  
You get 6 Flaming Allium Bulbs.

## TULIP BULBS

50 for only \$1.75

ORDER NOW—PAY LATER

100 — \$3.25

Everyone who loves flowers is thrilled with the glorious color and graceful beauty of Tulips in bloom. And what better way to assure yourself of a gorgeous display right in your own garden than to plan ahead and place your order now at these low, money-saving prices. Tulip bulbs must be planted in the fall. They bloom in the spring and many years thereafter. No need to dig them up every year — just let them stay. You pay nothing, until delivered in time for fall planting. These are healthy, hardy, medium size planting stock bulbs averaging 2¼-3 inches circumference — yours at the low, low price of 50 for only \$1.75 and 100 for only \$3.25. Given proper soil, care and with normal growing conditions they should develop into larger size bulbs the first year's planting. They come in a rainbow mix assortment of flaming colors, dazzling reds, white, orange, yellow, pinks, two-tones, dark shades, etc., as available. Many have already bloomed in the field this spring. Full planting directions included.

Nearly 15 million customers have purchased garden stock from us and we give the same guarantee as we have in the past — you must be satisfied with the many blooms the first season, the normal bloom the second season and 5 years thereafter or replacement free. So don't wait — place your order now and be assured of delivery in time for FALL planting. You get 6 Flaming Allium free of extra cost with your tulip bulbs for fall planting. While planning your fall garden check the wonderful selections of other fall planting items in the coupon below and take advantage of the many money-saving combination offers.

### FREE BONUS



6 Flaming Allium (Allium Ostrowskianum) with Tulip orders. Bloom in profuse red flower clusters, 3-4 cm. bulbs.

### MORE BARGAIN OFFERS FOR FALL PLANTING

#### IMPORTED HOLLAND PARROT TULIP BULBS

10 for \$1.98

Bloom with large, feathered flowers resembling a Parrot's head. Coloring is brilliant with red, yellow and tinge of green on each tulip. Our price for 10 cm. bulbs averaging 3 inches circumference is probably much less than you will pay for ordinary tulips. Check order on coupon.

20 for \$3.65

#### IMPORTED HOLLAND DUTCH HYACINTH

6 Bulbs for \$2.25

A great offering in fine Dutch Hyacinths, 14 to 15 cm. garden size (5 in. circumference). Very fragrant. Pink, yellow, blue, and

white mix give lovely color contrast. Order now for fall delivery and save. Instructions included.

#### CREeping PHLOX (PHLOX SUBULATA)

Michigan Nursery Grown

6 for \$1.50

Spreads 12 inches in diameter when mature. Clusters of flowers in spring each bloom about an inch across. Lovely foliage carpets ground and stays green almost all year. Valuable for borders, boundaries, banks, bare spots. Healthy, hardy perennial plants one year old. Assorted colors as available. Check coupon and mail today.

18 for \$3.95

#### GIANT ALLIUM (ALLIUM AFLATUNENCE)

3 Bulbs \$1.98

Planted this fall these Imported Holland 10 cm. bulbs grow into huge 8-12 inch lilac-purple flower heads next spring. These 2 ft. beauties are a garden rarity. Order today.

#### First Flowers of Spring!

#### IMPORTED HOLLAND CROCUS

20 Bulbs for \$1.98

Cheery goblet shaped flowers. Our mix of white, yellow, striped and blue are very colorful. Bulbs are 7-8 cm. (2¾-3 inch circumference). Check coupon. Order now.

#### PEONY SPECIAL 3 for \$3.45

Hardy, lifetime peonies offer rare beauty with large, blooms on stems 2 to 3' tall. Bloom second growing season after planting and each spring without replanting. We ship 3 sturdy 2 to 3 eye planting stock root divisions at fall planting time for only \$3.45 . . . 3 colors . . . one each of pink, white and red. Check coupon.

#### DAFFODILS

(NARCISUS—U.S. GROWN)

18 Bulbs \$1.99

Famed varieties of yellows, whites, pinks, two tones as available. 10-12 cm. blooming size bulbs . . . (ave. 4" circumference). Bloom early spring with enchanting colors. Mail coupon today.

#### ANOTHER BONUS FOR MAILING ORDER BY NOVEMBER 1st

6 Imported Holland ALLIUM MOLY BULBS (5 cm.) that bloom with thick clusters of yellow flowers on stems up to 14" given free of extra cost if order is mailed by deadline date. Check this bonus in coupon and mail today.

#### MICHIGAN BULB CO.

DEPT. BE-1738, 1950 WALDORF N.W.  
GRAND RAPIDS, MI 49550

**SEND NO MONEY** Just check your selections in the coupon and mail today. On delivery for planting this fall pay your postman plus C.O.D. postage. All bonuses to which you are entitled will be included in your order FREE of extra cost. If you don't feel that you have hit the bargain jackpot of the garden world simply return your order within 10 days for a refund of the purchase price. Be sure to read the BONUS COUPON below.

#### MAIL THIS MONEY SAVING ORDER COUPON

MICHIGAN BULB CO., DEPT. BE-1738, Grand Rapids, MI 49550  
Please send me items checked below in plenty of time for regular fall planting. If I am not satisfied on arrival I may return within 10 days for purchase price refund. Any fall planted item not blooming, replacement is free (5 yr. limit).

No. of Orders	Cat No.	Item	Cost
	140	Tulip Bulbs (Min. 50)	
	157	Parrot Tulips (Min. 10)	
	152	Dutch Hyacinths (Min. 6)	
	309	Creeping Phlox (Min. 6)	
	132	Giant Allium (Min. 3)	
	166	Crocus Bulbs (Min. 20)	
	118	Peony Special (Min. 3)	
	161	Daffodils (Min. 18)	
1	177	6 Flaming Allium With Tulip Order	FREE
1	181	6 Allium Moly — Order by Nov. 1st	FREE
1	178	6 Dutch Muscari Bulbs for \$5.00 Order	FREE
1	179	6 Dutch Muscari Bulbs Plus 6 Glory-of-the-Snow For \$7.50 Order	FREE
1	121	6 Muscari, 6 Glory-of-the-Snow Plus 25 Oxalis (Deppel) For \$10.00 Order	FREE

#### TOTAL THIS ORDER

- ☐ Remittance enclosed. Add 90c for postage and handling. We ship extra BONUS of 6 Flaming Allium.
- ☐ Send C.O.D. plus postage charges.

GRAND TOTAL

NAME

ADDRESS

CITY

STATE

ZIP

#### FREE OF EXTRA COST

In addition to all the other bonuses listed, if your order totals \$5.00 or more you will also receive bonuses as described below free of extra charge. Be sure to enclose coupon with order.

- ☐ ORDER TOTALS \$5.00 or more. Send 6 DUTCH MUSCARI BULBS (6-7 cm.) that bloom in rich blue.
- ☐ ORDER TOTALS \$7.50. In addition to 6 DUTCH MUSCARI, also send 6 Imported Holland GLORY-OF-THE-SNOW BULBS (4-5 cm.).
- ☐ ORDER TOTALS \$10.00 or more get MUSCARI, GLORY-OF-THE-SNOW Plus Imported Holland Garden of 25 Oxalis (Deppel) Bulbs with lovely floral container. Grown indoors or out to 3-6" heights. Our 3 cm. bulbs sell regularly 25 for \$2.10 . . . your super bonus with \$10.00 orders.