

# ren

MAY 1982

## Illinois Rural Electric News



★★★  
SPECIAL  
OFFER

# Public Announcement

FOR THE READERS OF THIS PUBLICATION

★★★  
SPECIAL  
OFFER

# THE SENSATIONAL, ALL-NEW NONPRISMATIC 50 MILE BINOCULARS

**IT MAKES A  
WONDERFUL GIFT!**

**GIANT 60MM  
OBJECTIVE  
LENSES!**



**ONLY  
798  
WHILE  
THEY LAST!**

© F.T.I.—1981

**These Amazing Binoculars  
must thrill and satisfy you in every  
way ... or you pay nothing!**

- CHECK LIST OF  
QUALITY FEATURES**
- Giant 60 Millimeter Lenses
  - Personalized Eye Width Control
  - Free Shoulder Carry Straps
  - Cover Seals to Protect Lenses
  - Rugged Body for Heavy Duty Use
  - Genuine Unbreakable Lenses
  - Variable Focusing for Heavy Duty Use
  - Taper-Fluted Centre Focusing
  - Revolutionary New Design
  - Non Reflective Black Body
  - Optional Carrying Case—\$2

**FREE!** LENS COVERS AND SHOULDER STRAPS WITH EACH PAIR

FOSTER-TRENT proudly presents the Jubilee Model of the famous POWERHOUSE BINOCULARS. This Gigantic "SUPER 50" was created in Europe after years of extensive research. It's chock full of revolutionary new design ideas, such as Fluted Barrels for extra strength . . . Variable Focusing for smoothe, pull-in power — from 50 Yards or 50 Miles away! Best of all, GIANT 60MM Objective Lenses for massive light gathering power. You'll get terrific views. Now, any reader of this publication can own these superb binoculars at rock-bottom cost.

**PERFECT FOR SPORT FANS . . . NATURE LOVERS!  
GREAT FOR SECRET SURVEILLANCE!**

The Giant 60MM Lenses pull in the thrilling action . . . even from the bleachers. Study wild animals without disturbing them. Enjoy thrilling vistas from 50 MILES AWAY. See without being seen . . . it's fun to be your own detective. Study suspicious strangers from the privacy of your own home.

**TRY THEM ON 30 DAY FREE HOME TRIAL!**

No Risk No Obligation. Enjoy them for 1 full month before deciding. If you're not 100% satisfied return them for a full, immediate refund except postage & handling. All orders received will be shipped on a first come, first served basis. Please act promptly for fast shipment.

**10 YEAR CONDITIONAL GUARANTEE**

These quality nonprismatic binoculars are ruggedly made and fully warranted against manufacturer's defects for 10 full years. If they should fail to operate properly anytime in 10 years, return with \$1 to cover handling costs and they will be repaired or replaced free. Guarantee ends DECEMBER 31, 1991.

## SPECIAL DELUXE MODEL

A limited quantity of our NEW DELUXE MODEL (not illustrated) is now available. It has all of the great features of the model described in this ad PLUS Tinted Lenses. Only \$2 more. It is our Model No. 195 — Only \$9.98 Each!

**FOSTER TRENT INC., Dept. 851-TL,  
2345 Boston Post Road, Larchmont, N. Y. 10538**

Rush my order for the new, improved POWERHOUSE BINOCULARS with GIANT 60 MILLIMETER lenses as checked below on 30 DAY TRIAL. My complete satisfaction guaranteed or my money back (less postage and handling). Include the Carrying Straps and Cover Seals at no extra cost.

**INDICATE QUANTITY WANTED BELOW**

ONE BINOCULAR — \$7.98 + 1.25 postage & handling.  
 TWO BINOCULARS — \$14 + 1.65 postage & handling.  
 THREE BINOCULARS — \$19 + 1.95 postage & handling (YOU SAVE \$6.74).  
 SPECIAL BINOCULAR CASE (CALF GRAINED VINYL) ONLY \$2.00  
 DELUXE MODEL — No. 195—\$9.98 + 1.25 postage & handling  
 N.Y.S. Residents be sure to add Sales Tax.  
 SORRY! No COD's. Please send check, M.O. or Cash for prompt delivery.

Print Name \_\_\_\_\_  
 Address \_\_\_\_\_  
 Town \_\_\_\_\_ State \_\_\_\_\_ Zip \_\_\_\_\_

**VISA & MASTERCARD MEMBERS MAY CHARGE ORDERS**  
 (Please fill in information below!)

Visa No. \_\_\_\_\_ Master Charge No. \_\_\_\_\_  
 Expiration Date \_\_\_\_\_ Expiration Date \_\_\_\_\_

**NOTICE: Visa and Master Charge card holders may call in their order from 9 AM to 5 PM Eastern Standard Time. Call: 914-834-7370**

# Now not the time to cut back

Recent findings by the United States Department of Agriculture Economic Research Service (ERS) reinforce the 1980 Census conclusion that rural America is changing.

When results of the Census two years ago indicated that rural America was growing faster than metropolitan areas, researchers sought to find out why.

A population specialist for the ERS, Calvin Beale, cites several reasons.

Displacement from farming is no longer the factor it was. In the 1960s two million jobs in agriculture were lost, Beale says. In the 1970s, he added, 150,000 were lost.

Non-farm job opportunities improved greatly, with the most significant gains in service industries, not manufacturing. In the 1960s, manufacturing accounted for 31 percent of new non-metro, non-farm jobs, but in the 1970s, that percentage was only 15 percent.

The clean rural environment and lifestyles were big draws for the newcomers, several surveys indicated.

Beale goes a step further to compare the advantages and disadvantages. The advantages are many.

Rural population gains have created a better balance of population growth and economic opportunity within the nation, he says. Many people find that rural living offers new residential freedom. No longer are many persons forced to live where economic circumstances dictate; more people can live where they want, Beale says.

The heart, though, of Beale's conclusions, reveals the strides of rural America to make life in the country desirable. "The basic material conditions of life in rural areas at long last approximate those in urban areas sufficiently to make living attractive," Beale says. This includes electricity, water, central heating, communications, paved roads,

education and job choices.

It is no accident that electricity heads that list, or that electricity is a key element in running water, central heating, or communications, among those things Beale lists.

There are drawbacks to this shift in population. Farmland is lost, population declines in large urban areas can create national social and economic problems, and open-country settlement entails higher distribution costs for services, including electricity. Consumers-per-mile, line density, in rural areas is several times less than in urban areas, meaning that providing service is more expensive.

Beale has determined that in the last few years, though, rural job growth rates have declined somewhat and rural unemployment has increased. He cautions that such trends are unlikely to signal the start of any return to conditions of earlier decades however. "Despite such economic dampening," Beale says, "the social motivations will continue to lure city dwellers and keep rural people in their home counties." General economic conditions of the past several years have no doubt contributed to the slowing of the rural job growth rates, as well as the increase in rural unemployment, just as they have affected jobs across the country.

Positive changes in rural America over the years have been good for the whole country, but the ERS findings indicate the fragile nature of the rural economy at this critical time. Just as the realization of the full potential of rural electrification is yet to come, so is long-term economic strength in rural areas. Drastic curtailment of federal programs that benefit rural America, and consequently the whole country, is not in the nation's best interest.

---

## May 1982 Volume 40, Number 1

Published by Association of Illinois Electric Cooperatives

---

### In this issue

|                                      |                                       |           |
|--------------------------------------|---------------------------------------|-----------|
| Larry F. Elledge<br>Editor           | Youth tour of Springfield             | 4 and 5   |
|                                      | Energy efficiency                     | 6 and 7   |
|                                      | Agricultural Legislative<br>Breakfast | 8 and 9   |
| Gordon M. Olsen<br>Managing Editor   | SIPC annual meeting                   | 10 and 11 |
|                                      | Recipes                               | 14 and 15 |
| Jack D. Halstead<br>Associate Editor | A barn is always useful               | 20 and 21 |
|                                      | Trading Post                          | 22        |
|                                      | Patterns                              | 23        |

### ren

#### Illinois Rural Electric News

(USPS number 258-420) is published monthly for \$3.00 per year and is the official publication of the Association of Illinois Electric Cooperatives, 6460 South Sixth Frontage Road, Springfield, Illinois 62707. Second class postage paid at Springfield, Illinois and at additional mailing offices.

POSTMASTER: Send address changes to Illinois Rural Electric News, P. O. Box 3787, Springfield, Illinois 62708.

---

Cover: April 20 was a special day for more than 100 Illinois high school students. As finalists in their local electric cooperative's "Youth to Washington" essay contests, they toured government and historical attractions of Springfield. (See story and photos on pages 4 and 5.)

Advertising and editorial inquiries should be directed to the Illinois Rural Electric News, P. O. Box 3787, Springfield, Illinois 62708. National advertising representative: Southwest Dailies, 400

N. Michigan Avenue, Chicago, Illinois. Acceptance of advertising by the IREN does not imply endorsement by the publisher or the electric cooperatives of Illinois of the product or service

advertised. Advertisers are screened by the publisher and every effort is made to protect the subscriber but the IREN is not responsible for the performance of the product or service advertised



*Clockwise from right: Students visit the Senate Chamber in the old State Capitol building. Going down the spiral staircase in the Governor's Mansion. Filing by the Governor's office: in a surprise move, he stepped out for a brief chat with the students, and signed autographs for many. One of the rooms in the Governor's Mansion. Walking from the visitors center to Lincoln's home.*



## Many lawmakers join in Springfield

Some 115 Illinois high school students enjoyed the cool, breezy weather that set the stage for the 1982 Illinois Rural Electric Youth Day April 20 in Springfield. Governor Jim Thompson had issued a proclamation honoring the essay contestants, and spoke to them during their lunch break.

The day started early for many — Southern Illinois Electric Cooperative chartered its usual school bus that left Dongola about 5 a. m. — and ended late, with some cooperatives hosting a dinner with their legislators and heading for home at about 8 p. m.

The hours between were filled with various activities, and the youths adhered to a schedule every bit as hectic as some of them will enjoy on the Youth to Washington tour June

11-18.

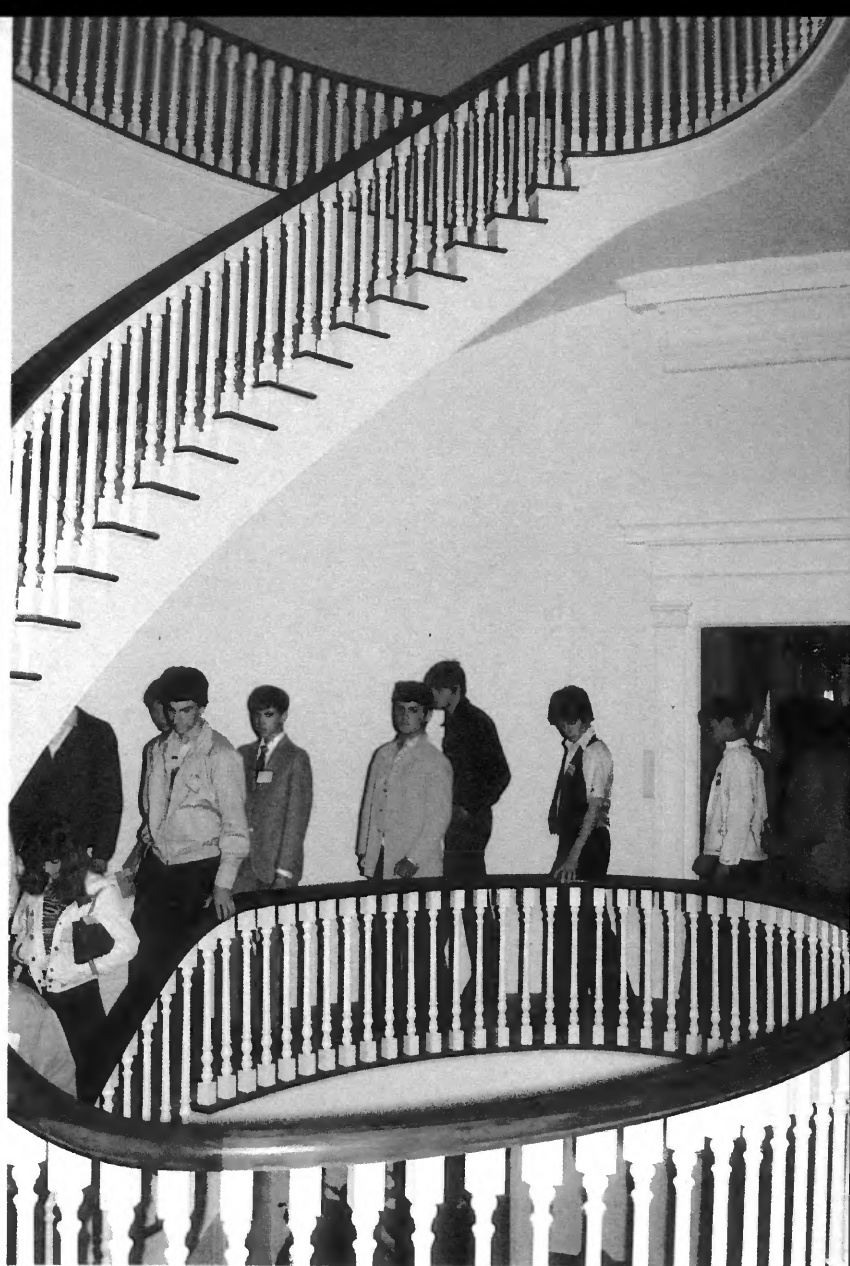
They gathered at 8:30 a. m. at the Springfield Hilton for coffee, juice and rolls, picked up their name badges and learned of their itinerary, then boarded four chartered buses for a short trip to the Governor's mansion where they saw many relics from more than a century of the state's history. Next stop on the agenda was Abraham Lincoln's home, also filled with many artifacts dating back to the time Lincoln practiced law in Springfield, and a visit to the nearby Lincoln Home Visitors Center.

Governor Thompson spoke during the recognition luncheon and told the youths of his efforts to pass a cent-a-drink liquor tax for education. "We're determined to have a balanced budget," he said, holding aloft a copy

of the state's proposed budget, "and we've had to make a lot of painful cuts to do it. If we're going to restore some of those cuts, we need more revenue. The General Assembly is reluctant to pass a tax to raise more money, but I believe we need it. I also believe we need a three-or four-cent-a-gallon tax on gasoline to get our highway network back in shape, too.

"We had put money in the bank when times were good, as prudent people do," the governor continued, "and now we're in a lot better shape than the surrounding states. We want to be financially sound when the present recession ends, so we'll be in a good position to compete in the job market."

Senator Vince Demuzio also spoke to the students. He urged them to



## Youth activities

become active in the legislative process. "Write or call us and give us your ideas," he said, adding, "We need innovative ideas. Just because you aren't old enough to vote doesn't mean you can't do anything. As civics students, you're probably better qualified than many voters. You can ring doorbells and pass out handbills. There's plenty of room for interested young people in the electoral process."

Back "on tour," the students headed for the State Capitol for a guided tour of that structure, including the House and Senate chambers, where the voting process was explained.

They were invited to file by the Governor's office to look in, but were advised that the Governor was in a meeting and would be unable to greet

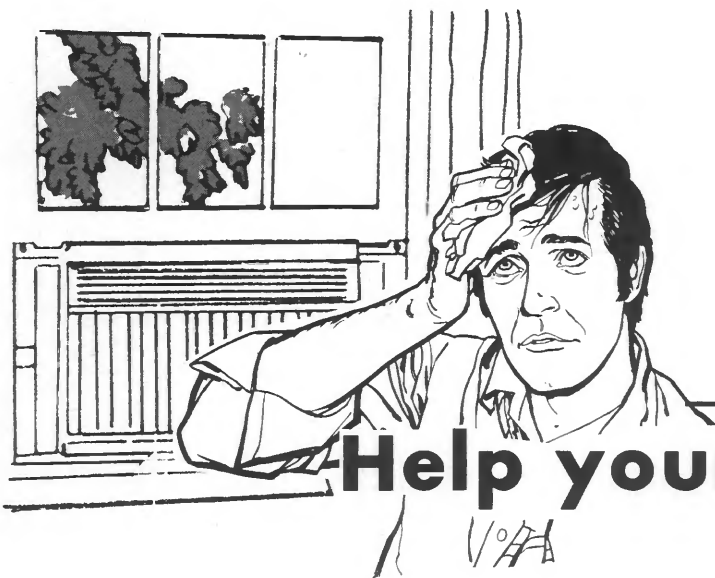
them. In a surprise move, Governor Thompson stepped out of his office as the group came by, and paused to sign autographs for many.

A visit to the Illinois State Museum was then followed by a trip to the old State Capitol, and the trip wound down for many, although students from seven cooperatives stayed for a dinner with their legislators, many of whom stopped by briefly to say a few words.

In addition to Thompson, officials visiting with the youths during the day were Secretary of State Jim Edgar and the following Senators: Vince Demuzio of Carlinville, John R. Davidson of Springfield, Kenneth G. McMillan of Bushnell, John W. Maitland, Jr., of Bloomington, Laura L. Kent of Quincy, Sam M. Vadalabene

of Edwardsville, John J. Nimrod of Park Ridge, Richard A. Walsh of River Forest, Mark Q. Rhoads of Western Springs, William F. Mahar of Homewood, Philip J. Rock of Chicago, LeRoy Walter Lemke of Chicago, Jim Gitz of Freeport, John E. Grotberg of St. Charles, James "Pate" Philip of Wheaton and Prescott E. Bloom of Peoria.

The House of Representatives was in session, preventing many representatives from visiting. Some did take part, including: A. T. "Tom" McMaster of Oneida, Helen F. Satterthwaite of Urbana, Virgil C. Wikoff of Champaign and Glen L. Bower of Effingham. Also attending was Bruce Kinnett of the Senate Republican Staff, Senate Agriculture, Conservation and Energy Committee.



**Keeping cool**

# Help your air conditioner

**Y**ou can save energy by maintaining, managing and supplementing your existing air conditioner. The following information, prepared by the University of Illinois Cooperative Extension Service and the Small Homes Council-Building Research Council, offers a number of suggestions on how to improve efficiency of your air conditioning system.

Before hot weather gets here, inspect your air conditioner. Clean or change the filter, check the condition of the belts and their tension, oil motors, vacuum dirt and dust from both outside and inside coils and fins, and make sure all return and supply registers are clean and unobstructed by furniture or draperies.

Contact qualified service representatives if electrical or refrigeration problems occur. They can measure the electrical current drawn by the com-

pressor, check thermostat accuracy, look for refrigerating fluid leaks and add fluid if necessary, check electrical connections, and flush the evaporator drain line. If your air conditioner uses the same ducts as your heating system, the serviceman may have to adjust damper settings.

If you set your thermostat at the recommended 78 degrees Fahrenheit, you will of course save money and energy compared to setting the thermostat lower. To increase the capability of your thermostat to improve air conditioner efficiency, be sure the thermostat is located away from the sun, lamps, and other heat-producing appliances.

You can use automatic timers on air conditioners, in case you want to have your unit begin operation an hour or so before you plan to arrive home in the afternoon or evening.

Your house will be comfortable when you arrive home, but there will have been no need to run the air conditioner all day.

Your air conditioner probably will work more efficiently if you locate the compressor in a shaded area. If you cannot place it in an area shaded by your house, be very careful if you try to shade it with shrubs or bushes. The free flow of air around your compressor is more important than shading. If you must make a choice between leaving the compressor in a sunny area of shading it in such a manner that air flow is restricted, forget the shading.

You may want to consider installing a window air conditioner to cool only the occupied section of a house equipped with a central air conditioning system. A window unit can also help your central unit overcome especially heavy loads, such as on extremely hot days.

Room fans can also be used to supplement your window or central air conditioners by increasing circulation. Circulating air has a cooling effect because it speeds the evaporation of perspiration from your skin. Floor fans can be used to mix the air in the room by circulating the cool air at floor level into the rest of the room.

Window shading devices, such as roof overhangs, porches, balconies and

To: **A. I. E. C. Publications**  
**P. O. Box 3787**  
**Springfield, Illinois 62708**

Please mail me \_\_\_\_\_ copies of the publication  
**"Home Weatherization"**  
**(For each copy, enclose \$1.00 to cover the cost of the book and pay postage and handling.)**

Please Print Name \_\_\_\_\_

Mailing Address \_\_\_\_\_

City \_\_\_\_\_ State \_\_\_\_\_ Zip \_\_\_\_\_

elp you

energy  
efficiency

awnings with ventilating slots, help reduce cooling cost when they block out the sun without obstructing the view or trapping hot air around the window.

There are times during any cooling season that offer you an opportunity to shut off your air conditioner. You can use natural or mechanical ventilation.

Natural ventilation is provided by opening windows to take advantage of prevailing breezes. The most effective natural ventilation occurs when the open windows are on opposite sides of the house. Those persons who do not plan to use air conditioning will find it best to ventilate during the cool of the night, then shut the house up early in the morning to keep the cooler air from being rapidly displaced by warm air on a hot day.

On calm summer nights natural ventilation may not be sufficient. You may need to supplement with fans to speed the cooling. By operating either attic or window fans throughout the night, large quantities of cooler night air can be circulated through the house, lowering indoor air temperatures.



# FOUND!

## IN GUARDED VAULTS!

### 5,000 ORIGINAL, U.S. GOV'T. MORGAN SILVER DOLLARS that escaped Gov't. meltdown!

Rare Surviving Hoard of Original U.S. Gov't. Coins To Be Released To U.S. Citizens For Only \$30 Each ... Acceptance Deadline: June 24



Tonight at midnight, history will be made when the National Monetary Center opens its vaults and releases to the public some of the last surviving ORIGINAL, U.S. GOV'T. MINTED MORGAN SILVER DOLLARS IN EXISTENCE IN ALL THE WORLD. Yes, a valuable hoard of 5,000 Morgan Silver Dollars . . . that escaped Gov't. meltdown over a half a century ago . . . and have become one of the rarest coins on the face of the earth.

#### THE DAY THE SILVER DOLLAR ARMY MARCHED OFF TO WAR!

You see, in World War I, due to severe silver shortages, the U.S. Gov't. drafted from circulation and melted down some 270 million Morgan Silver Dollars. In one single action—"Operation Meltdown"—the Morgan suddenly became one of the rarest coins ever minted. Which is why the release of this hoard of 5,000 original U.S. Gov't. Morgans is such a significant event in the world of valuable coins.

#### FOR THE RELEASE TO INDIVIDUAL CITIZENS ONLY— FOREIGN AND DEALER ORDERS WILL NOT BE HONORED!

Most significant, each of these original Morgan Silver Dollars, is guaranteed to "contain 412.5 grains of ninety per cent fine silver," to measure 38.1 mm in diameter with weight of 26.73 grams and will be accompanied by a Certificate of Authenticity to this effect for your own insurance purposes.

#### PRICE GUARANTEED FOR THIS SPECIAL RELEASE ONLY! SUPPLY GUARANTEED FOR ONLY AS LONG AS THEY LAST!

Due to limitations of our available supply, and the acute scarcity of original U.S. Gov't. Morgan Silver Dollars still in good condition, we can only guarantee this initial offering price of \$30 per coin plus \$2 postage, handling and insurance per coin for this special release only.

In addition we must set a strict limit on no more than twenty (20) original Morgan Silver Dollars per order, AND SINCE THIS OFFER IS BEING MADE AVAILABLE TO PRIVATE U.S. CITIZENS ONLY, NO ORDERS FROM DEALERS OR INDIVIDUALS FROM OUTSIDE THE UNITED STATES WILL BE ACCEPTED and uncashed checks will be returned.

But once again . . . this is a STRICT LIMITED OFFERING TO U.S. CITIZENS ONLY. All orders will be filled on a first-come, first-serve basis; and of course your purchase price refunded in full, anytime within 14 days if not completely satisfied. **SPECIAL COLLECTOR'S DISCOUNTS: 3 COINS for \$75 plus \$5 postage, handling & insurance; 5 coins for \$120 plus \$5 postage, handling & insurance; 20 coins for \$425 plus \$5 postage, handling & insurance.** To avoid disappointment or future regret, you must place your orders immediately. ACT NOW!

**NATIONAL MONETARY CENTER, DEPT. SWNV-27  
Box 37438, WASHINGTON, D.C. 20013**

NATIONAL MONETARY CENTER, Inc. A private coin repository not affiliated with the U.S. mint or any gov't. agency.





## Poor economy has serious effect on family farming

Interest rates and the family farm were the focal points of comments by state and national legislative and agriculture leaders during the 12th Agriculture Illinois Legislative Breakfast March 31 in Springfield.

Remarks to representatives of the 52 sponsoring agriculture groups by featured speakers indicated the close relationship between the nation's serious economic problems and the threats facing the family farm.

United States Secretary of Agriculture John Block, an Illinois farmer, said farmers were willing to live with the problems created by nature, and cited inflation, high interest rates and over-regulation as manmade problems that farmers find "a little bit hard to accept."

"Those are the ones we're trying to change. I'd like to see everything turn around overnight in agriculture, everything in the whole economy, but I don't have a magic wand. No one has a magic wand," Block went on.

"I realize that these times are not the best for agriculture, but the times

are going to get better. The contributions this industry makes to the United States of America are so important that we're not going to see a total (U.S. economic) recovery or sustained recovery unless agriculture participates. In fact, it may necessarily have to lead the way," he said.

Block noted that the nation's agriculture economy produces about 20 percent of the gross national product, 23 million jobs and \$45-billion worth of exports.

Citing lowered inflation rates, Block said, "Interest rates must follow suit. Interest rates still must be a reflection of inflation, or anticipated inflation. As we hold inflation down, the interest rates should be falling also."

Governor Jim Thompson related the problems of the family farm to economic conditions. "There is a bond between the family farm and the land," Thompson said, "and this land helps farmers overcome high interest rates, high costs, low prices, worry and debt.

"Interest rates are hurting more than just agriculture," he added. "They're hurting retailing, heavy machinery, homebuilding. They're hurting everybody," the Governor said. He added that cutting the federal deficit is mandatory if the rates are to come down.

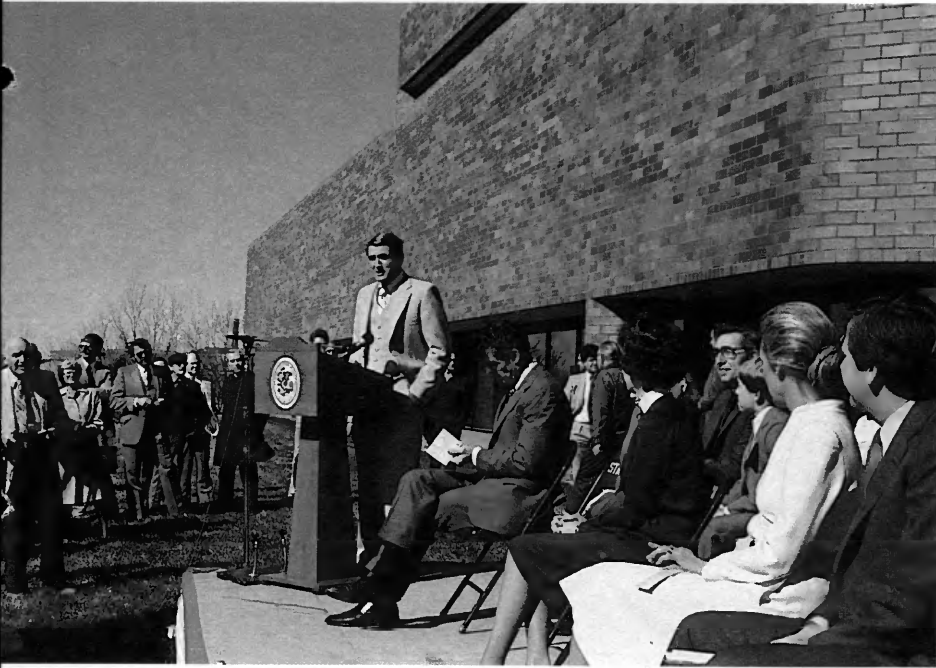
Thompson also said Illinois farmland is on the way to being properly assessed for tax purposes for the first time in the history of Illinois, thanks to what he termed "bipartisan initiative."

He pointed to the coming elimination of sales tax on farm machinery, saying that although state revenues will be reduced by elimination of the tax, it was the fair thing to do, because of the advantages accruing to farmers in surrounding states that have not had such a tax.

State Representative Harlan Rigney (R-Freeport), chairman of the House Agriculture Committee, outlined new farmland taxing legislation.

"We were facing a situation here in Illinois where land valuations for assessment purposes were going to go up about 30-40 percent in most of our counties. Something obviously had to be done, so for the first time we wrote a bill that completely struck out any reference whatsoever to selling price. For the first time we said we were going to relate farmland assessment to its ability to earn net income — not





*Opposite page: Governor Thompson talks with directors of Southwestern Electric Cooperative, from left, Richard Suhre of Alhambra, Donald Sanders of Ramsey, Lawrence Rubin of St. Peter, Charles E. Krejci of Edwardsville, and Stuart Yagow of St. Elmo. This page: Illinois Director of Agriculture Larry Werries was among the speakers during dedication ceremonies at the new Agriculture Building at the Illinois State Fairgrounds held later the day of the breakfast.*

gross, but net income. How many years have we as farmers talked about that subject and waited for the day for that to happen?" Rigney said.

"This is a major accomplishment, probably the greatest accomplishment for Illinois agriculture in this century," he added.

Jerome J. Joyce (D-Bradley), chairman of the Senate Agriculture, Conservation and Energy Committee, stressed the fiscal problem facing the family farm.

"Without any exaggeration, the family farmer in Illinois, and the nation — is in a terrible dilemma. Farming is more than just a job. It's a way of life," he said.

Quoting USDA estimates, Joyce said the nation's 2.4 million farmers were \$194.5-billion in debt as of January 1. "It's no wonder. Farm expenses have risen from \$75.9-billion in 1975 to \$141.5-billion in 1981, and in the same time fuel costs have risen 113 percent."

"U.S. agriculture stands at a crossroads," he said. "Debt loads and bankruptcies have reached a level unseen since the depression, and USDA estimates that the next decade will see one million farmers driven from the land," he added.

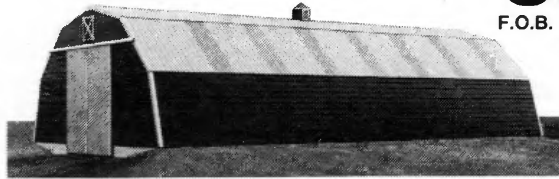
The Association of Illinois Electric Cooperatives, the service organization of the state's electric cooperatives, is among the breakfast sponsors.

# ALL-STEEL BUILDINGS

**DIRECT FROM MANUFACTURER**  
**36' x 100' x 18' HIGH**

**\$8995**

F.O.B. Springfield, MO  
Price excluding  
endwalls  
and doors



We need a few buildings erected in your area immediately! Save big \$ by dealing factory direct. Factory crews available; or erect it yourself with simple hand tools for even more savings. Insulate to R-30 in walls, ceiling. LIMITED OFFER — for more information call our toll-free number or mail the coupon below today.



**MELCO BUILDINGS** BY  
**OZARK BUILDING SYSTEMS, inc.**

Route 2, P.O. Box 159, Strafford, MO 65757

**COMMERCIAL**  **INDUSTRIAL**  **FARM**

*Manufacturers of steel buildings for more than 10 years*

**CALL TOLL FREE 1-800-821-7700 — EXT. 803**  
**IN MISSOURI 1-800-892-7655 — EXT. 803**

Please send me more information showing how I can take advantage of this limited offer for Melco All-Steel Buildings. IREN

NAME \_\_\_\_\_  
ADDRESS \_\_\_\_\_  
CITY \_\_\_\_\_ STATE \_\_\_\_\_ ZIP \_\_\_\_\_  
TELEPHONE \_\_\_\_\_



## SIPC report

# Environmental control costs add u

**E**stimates by Southern Illinois Power Co-operative (SIPC) indicate that environmental control at the Lake of Egypt Power Station costs consumers served by SIPC's three member-cooperatives an average of \$13 to \$15 per month.

Board President Roger C. Lentz of Eldorado, in his report during the Annual Meeting of SIPC members March 25 at the cooperative's headquarters near Marion, said environmental costs represent 32 percent of the capital expense of SIPC's Unit No. 4 completed in 1978 and 17 percent of the cooperative's annual power production expense.

"While it is clear that the policies adopted in response to the environmental movement have produced substantial benefit, they have also generated costs and reduced efficiencies," Lentz called for re-evaluation of the expensive methods now used to achieve mandated air quality standards.

He noted that more than \$25-million of the \$80-million cost of Unit No. 4 was spent for environmental control, including particulate removal devices, sulfur dioxide removal equipment and dedicated plant generating capacity required to operate the

pollution control equipment. These costs represent only the initial cost and do not represent the continuing cost, such as interest, principal, operations, maintenance and materials, he said.

Lentz said actual environmental control costs for the year 1981 were \$5.9-million, and that estimates of expenses for 1982 show costs exceeding \$6.3-million. "As is readily apparent from these figures, the cost of compliance with the air quality regulations is steadily increasing. It should be pointed out that these costs are passed on to members in the form of higher electric bills.

"We do not necessarily believe the environmental concern is misplaced or inappropriate, only that the present methods used to purchase the environmental increment may be shortsighted. We recommend that each member review the benefits of the present environmental procedures in comparison to the costs," Lentz added.

General Manager James R. Chapman cited two major factors that have allowed SIPC to keep the cost of electricity as low as possible while still maintaining sufficient generating capacity and a reliable system.

"We have sufficient lower-cost

capacity to serve our members' need through the mid-1980's. This existing capacity allows us to delay the building of new generating capacity, and, although this does not insulate us from the effects of high interest rates and other costs, it will allow for some stability in our present rates.

"The second plus in our fight to keep down costs is the quality and reliability of service presently provided by SIPC and its member distribution cooperatives in southern Illinois. Despite low density of the areas served, SIPC and the three distribution cooperatives have built and are operating one of the most reliable generation and transmission systems in the country," he said.

Treasurer Richard Mosby of McClure said in his written report that kilowatt-hour sales to the three member-cooperatives declined about seven percent from 1980 to 1981, reflecting general economic conditions and consumers' conservation practices. "In a year of deepening recession and high interest rates, we managed to improve upon the economic situation," Mosby said. "Members must keep in mind that the system's reliability is contingent upon our financial stability. By continuing to improve

### PAPER BAG APPLE PIE

- 1 unbaked 9" pie shell
- 3 to 4 large baking apples
- 1/2 cup sugar
- 2 tablespoons flour
- 1/4 teaspoon nutmeg
- 2 tablespoons lemon juice
- 1/2 cup sugar
- 1/2 cup flour
- 1/2 cup (1 stick) butter or oleo
- 1/2 teaspoon cinnamon

Combine sugar and flour. Roll apples in this mixture. Sprinkle nutmeg, cinnamon and lemon juice over apples. Place in unbaked pie shell. Combine sugar, flour and butter. Sprinkle over apples. Place in paper bag on cookie sheet. Bake for 1 hour at 425 degrees. Makes one 9-inch pie.

### CHOCOLATE SHEET CAKE

- 2 cups sugar
- 2 cups flour
- 1/4 teaspoon salt
- 1 stick oleo
- 1/2 cup cooking oil
- 3 tablespoons cocoa
- 1 cup water
- 1 teaspoon soda
- 1/2 cup buttermilk
- 1 teaspoon cinnamon
- 2 eggs, beaten

Sift in large bowl the sugar, flour and salt. Set aside. Mix and boil oleo, oil, cocoa and water. Add the sugar, flour and salt mixture. Then add soda, buttermilk, cinnamon and eggs. Mix well and pour into oblong cake pan. Bake at 350 degrees for about 35 minutes or until done.

### ICING

- 1 stick oleo
- 3 teaspoons cocoa
- 6 tablespoons milk
- 1 box confectioners sugar
- 1 cup nuts

Boil together oleo, cocoa and milk. Add sugar and nuts. Ice cake after cooling.

### GRAHAM CRACKER BARS

- 2 sticks oleo
- 1 cup sugar
- 1 pkg. cream cheese
- 1 stick butter
- 1/4 cup Pet milk
- graham crackers
- 1 box powdered sugar
- 1 teaspoon vanilla

Line cookie sheet with graham crackers, placing lines all the same way. Bring to a boil the oleo, sugar and milk. Let thicken; then add 1 cup crushed graham cracker crumbs, nuts and vanilla. Pour over graham crackers. For topping, add another layer of graham crackers going the same way as bottom, then ice. Mix the cream cheese, butter, sugar and vanilla. Pour on top.

### HOBO STEW

- 1 cup onion
- 1 cup bell pepper
- 2 lbs. ground beef
- 1 can (1 lb.) kidney beans, drained
- 1 tablespoon steak sauce
- 1 can (1 lb.) whole corn, drained
- 2 cans tomato sauce
- dried basil
- dried mustard
- salt and pepper to taste

Cook onion and pepper. Add beef and brown. Add remaining ingredients and mix well. Cover and simmer.

### APRICOT COCONUT BALLS

- 1 1/2 cups dried apricots, ground
- 2 cups shredded coconut
- 2/5 cup sweetened condensed milk
- confectioners' sugar

Blend together apricots and coconut. Stir in condensed milk. Shape into balls and roll in sugar. Set aside in air until firm.

### PEGGY'S COOKIES

- 1 box white cake mix
- 1 pkg. buttered pecan instant pudding mix
- 1 cup oil
- 1/2 to 1 cup pecans
- 1 egg

Mix cake mix, pudding mix, oil and pecans. Beat egg and then add to other mixture. Roll out to the size of a large marble. Bake 10 to 15 minutes in a 350 degree oven.

### MARSHMALLOW FUDGE BARS

- 3/4 cup sifted flour
- 1/4 teaspoon baking powder
- 1/4 teaspoon salt
- 2 tablespoons cocoa
- 1/2 cup shortening
- 3/4 cup sugar

Sift together the flour, baking powder, salt and cocoa. Cream the shortening and sugar until light and fluffy. Blend in 2 eggs, one at a time. Add sifted dry ingredients to creamed mixture and mix well. Blend in 1 teaspoon vanilla, and chopped pecans, if desired. Spread in greased and floured 12 x 8 inch pan. Bake in moderate oven (350 degrees) 25 to 30 minutes. Cover top of baked bars with 12 soft marshmallows cut in half. Return to oven for 3 minutes or until marshmallows are soft. Spread marshmallows evenly. Cool; cover with easy chocolate frosting.

### EASY CHOCOLATE FROSTING

- 1/2 cup brown sugar, firmly packed
- 1/4 cup water
- 2 squares chocolate
- 3 tablespoons butter
- 1 teaspoon vanilla
- 1/2 cup confectioners sugar

Combine sugar, water and chocolate in a sauce pan. Let come to a boil and cook for 3 minutes. Add butter and vanilla. Cool. Blend in confectioners sugar. If necessary thin with a small amount of cream. Spread over marshmallow topping. Cut into bars.

### MEXICAN CHICKEN CASSEROLE

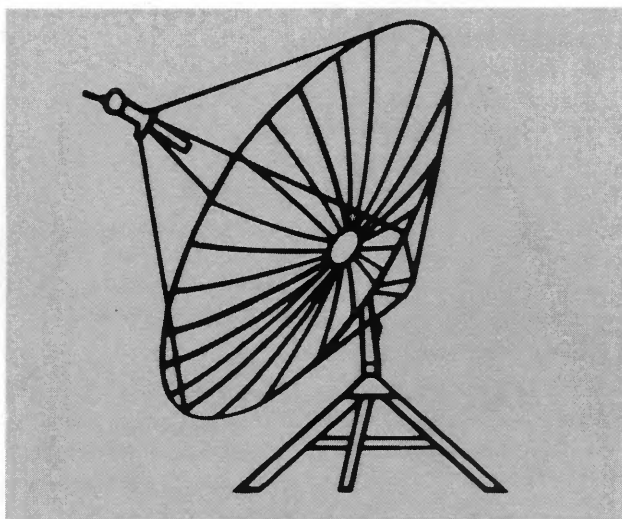
- 6-8 chicken breasts
- 1 pkg. Doritos or Tortillas
- 2 cans cream of mushroom soup
- 1 can cream of chicken soup
- 1 can Rotel tomatoes with green chili peppers
- 1 small onion, chopped
- 1/2 cup chicken broth

Boil chicken and remove from bone. Mix soup together. Place on layer of Doritos. Then place chicken and part of soup. Repeat. Cover top of casserole with cheese, if desired. Bake at 350 degrees for 30 minutes.

### MEXICAN SALAD

- grated cheese
- crushed Doritos
- drained chili beans
- chopped peppers

Make any combination of green salad that is desired. Add the above.



CONTACT YOUR NEAREST DEALER

# SATELLITE TV

## Brings a world of entertainment down to earth

*Mobil unit for home demonstration  
Specializing in quality and service  
Current uncut movies  
Sports  
Live Las Vegas  
Children's, educational and religious programs  
Complete installation or do it yourself*

Mike Fletcher  
1400 E. Main  
Benton, Il., 62812  
Phone 618-435-4946

Bob Marquardt  
R.R. 3  
Vandalia, Il., 62471  
Phone 618-283-2568

Scott's Satellite Connection  
Scot Mayer  
Windsor, Il., 61957  
Phone 217-459-2727

Celestial Visions  
Rod Damery  
R.R. 2  
Blue Mound, Il., 62513  
Phone 217-692-2646

Coast to Coast  
Ralph Sabetti  
426 E. Main  
Bushnell, Il., 61422  
Phone 309-772-3700

Kountry Kable  
Wayne Swigert  
R.R. 2  
Taylorville, Il., 62568  
Phone 217-287-7582

Skaggs Electric  
Mark Skaggs  
100 N. Vine  
Harrisburg, Il., 62946  
Phone 618-253-7438

Lemmerman Energy Systems Inc:  
Dana Lemmerman  
3100 W. Farmington Rd.  
Peoria, Il., 61604  
Phone 309-637-9000

Eagle Electronics  
Scott Hovey  
102 E. Ferguson Ave.  
Wood River, Il., 62095  
Phone 618-251-4206

R & T Satellite Sales  
Roger Herdes  
Rt. 1  
Clay City, Il., 62824  
Phone 618-689-3433

Gary Webb  
R.R. 1, Box 392A  
O'Fallon, Il., 62269  
Phone 618-234-0660

Terry Murphy  
Route 2, Box 180  
Kinmundy, Illinois 62854  
Phone 618-547-3546

SELECT DEALERSHIPS STILL AVAILABLE  
Distributed by: Rhodes Satellite Connection  
1703 S. Banker, Effingham, Illinois 62401 Phone 217-347-0469



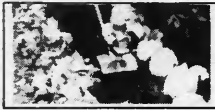
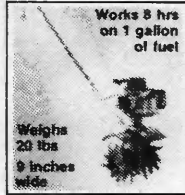
# GARDENING?

**WANT A WEED FREE GARDEN  
... WITHOUT HARD WORK?**

**NEW AGCO TILLER-POWER HOE TILLS DEEP... WEEDS FAST, NO HARD WORK OR PAINFUL BACKACHE!**

AGCO TILLER - POWER HOE ... TILLS DEEP

AGCO TILLER - POWER HOE ... TILLS DEEP



Works 8 hrs  
on 1 gallon  
of fuel

Weights  
22 lbs  
9 inches  
wide

Tills Deep

Weeds Fast

**NOT SOLD IN STORES... FREE BROCHURE... WRITE TO:**

AGCO, PO Box 75, Southampton, Pa. 18966 Dept. 8

Name \_\_\_\_\_  
Street \_\_\_\_\_  
City \_\_\_\_\_  
State \_\_\_\_\_ Zip \_\_\_\_\_  
Call 215-947-8855 24 hrs a day Charge card orders accepted

**Use an AGCO**

**TILLER POWER HOE**  
Gives you bumper crops of fruits, vegetables & flowers... liberal warranties, 2 wk money back trial period from AGCO.  
1. High speed tiger lines till toughest grasses & clays  
2. Weighs just 20 lbs. Easy to handle. Tills 6 to 8 inches deep  
Weeds narrow rows 1 to 3 inches deep.

**WEEDS FAST AGCO TILLER - POWER HOE ... TILLS DEEP ... WEEDS FAST AGCO TILLER - POWER HOE ... TILLS DEEP ...**

*Happy Jack*



**BEFORE**

**AFTER**

Registered U.S. Patent Office

"After costly treatment failed, this skin disease was believed incurable. At this point, HAPPY JACK MANGE MEDICINE was used with dramatic success! Also, HAPPY JACK DURACIDE dip: recognized safe & effective by U.S. EPA against fleas, ticks & mange. Contains NO Lindane! At farm, feed & drugstores." To request free catalog, write: Happy Jack, Inc., Dept. IL, Snow Hill, NC 28580

**Do-It-Yourselfers...Beat Inflation**

**Curtis Credit  
Makes It Possible  
to Become a Homeowner NOW!**



Do you have the desire for a home...but not the dollars to afford it? Check these Curtis credit features: **■ No big down payment. ■ Low, low monthly payments while building. ■ Your lot may not have to be fully paid for. ■ No installment payments for 6 months after 1st delivery of materials.\***

**Curtis does the hardest job, too.** Our carpenters erect the frame on your foundation. Then you complete it with our step-by-step instructions.

With Curtis you can stop waiting...if you are willing to start completing your home now!

Send coupon or call. No obligation.  
Allow three weeks for delivery or send \$1.00 for priority handling.  
There's a representative near you!  
Phone 1-800-358-9150

Complete It Yourself  
**Curtis Homes**  
*If you have desire... We have the trust!*

*\*Finance charge begins on date of first delivery.*

Send me your FREE Homes Catalog  
CURTIS HOMES, Dept. IL-1  
327 5th Street, WDIP Perrysburg, Ohio 43551

Name \_\_\_\_\_  
Address \_\_\_\_\_  
City \_\_\_\_\_ State \_\_\_\_\_  
Zip \_\_\_\_\_ Phone ( ) \_\_\_\_\_  
I plan to do  all or  part of the finishing  
 Enclosed is \$1.00 for priority handling.

**Dentures**

**\$195**

- Total Cost For Both  
Upper & Lower Dentures**
- Write for free details
  - High Quality at Budget Prices
  - In by 10 a.m.; out that same afternoon with your new dentures
  - Fitted by Licensed Dentists
  - We will process insurance and Medicaid forms
  - Complete dental services offered.

**We'll meet your bus, make your motel reservations,**

**Free hookup if you come by recreational vehicle!**

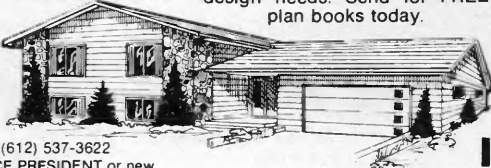
Please call for an appointment

**11.4% A.P.R.**  
**10 OR 15 YEAR CONVENTIONAL  
FIXED RATE MORTGAGES**

**AS LOW AS \$100 DOWN**  
**\$246<sup>77</sup>/mo.**  
Excluding taxes and insurance. Based on 180 equal monthly installments. Cash price of home \$21,239.00

Low cost fixed rate financing on everything we furnish and do. No hidden costs. No closing costs. We'll rough-erect the home of your choice on your lot and foundation. You do the easy finishing work and enjoy huge savings! Use your plans or one of our custom designs. Over 50 plans to choose from, including mid-size, full-size, and twin home designs. Our experienced draftsmen can serve all your design needs. Send for FREE plan books today.

Write for your local Illinois  
President Homes representative



Mail Coupon To: PRESIDENT HOMES  
4808 NO LILAC DR.  
MINNEAPOLIS, MN 55429 (612) 537-3622

Please send for our FREE  PRESIDENT  VICE PRESIDENT or new  TWIN-DUPLEX catalogs.

Name \_\_\_\_\_ City \_\_\_\_\_  
Address \_\_\_\_\_  
State \_\_\_\_\_ Zip \_\_\_\_\_ Phone \_\_\_\_\_

I own a lot  I can get a lot • We would like to be in our new home by

**PRESIDENT HOMES**  
A DIVISION OF HARVEY BUILDERS, INC.  
"OVER 15,000 HOMES BUILT"

CUSTOM BUILT  
PRE-CUT HOMES  
FOR OVER 30 YEARS

**Frederick C. Lauer DDS  
Mid-America  
Denture Clinic**

**Bus. Loop I-44 West, Rt. 3, Box 19C  
Mt. Vernon, Mo. 65712  
(417) 466-7196**

**our patients now number  
in the thousands...all the  
way from Maine to  
California, Canada to  
South America, Florida  
to Washington.**





**Put On A Happy Face!** Newsragg attaches instantly (without tools) to any rural mailbox or newspaper tube! Tells you when delivery has been made. No more wasted trips for mail/newspapers that aren't there! Easy viewing from front or rear! Postal approved -made by leading U.S. manufacturer!

\$2 each  
3 for \$5

**Daviday's**  
TREASURE CHEST

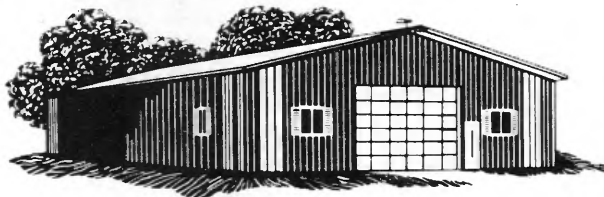
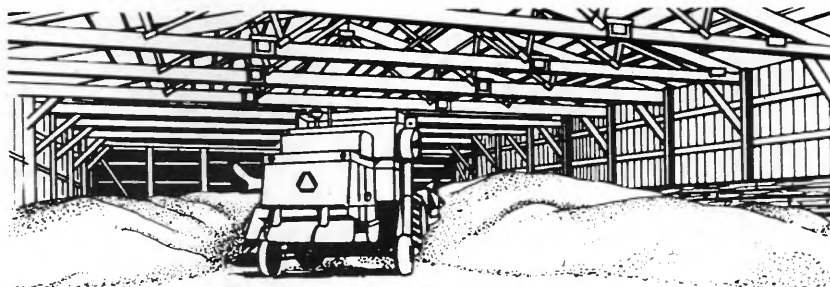
Daviday's P.O. Box 481-A  
Marion, Ohio 43302

### LIFETIME TANK COATINGS

Stop all leaks in steel and concrete — Prevent rust forever. Roof coatings for tar paper, composition and cedar shingles, and metal buildings. Anyone can apply all coatings. Fix it once and forget it. This is our 32nd year. Let us send you complete information.

**VIRDEN PERMA-BILT CO.**

Elox 71601N Ph. 806-352-2761  
2821 Mays St.  
Amarillo, Texas 79109



## This year, consider grain storage in a building instead of a bin.

Now's the time to look into a Wick building for your grain storage needs. This solid investment is a natural for grain storage and has the versatility to fit your changing needs.

And, by including proven Wick solar design features in your building, you can enjoy the advantages of an economical, efficient grain dryer. Based on normal, sunny day temperatures, a Wick solar drying system reduces corn moisture levels up to seven points... an excellent way to cut grain

drying costs on your farm.

Wick buildings are also ASCS approved for the low-interest loan program for financing on-farm grain storage.

In addition to grain storage and drying, a versatile Wick solar building is ideal for housing livestock, storing hay or machinery... or, for use as a workshop.

Choose a Wick solar design building for your grain storage needs instead of a bin and let the solar advantage work for you... year after year.

**Selling Direct!**  
America's Best Buy **\$449.00**  
★ COMPARE AT \$589.95

Compare Our 26" CUT 8 H.P. Brggs & Stratton engine riding lawn mowers.  
Mark VIII  
With A Smaller Mustang Or The Overpriced \$800-\$1500 Units & You'll See Why.  
All Attachments Available ★ **WE BUILD IT**  
Order now or send for free brochure while they last!

817-640-1198  
**CONTINENTAL MFG. DEPT. IC**  
3205 E. Abrams St.-Arlington, Tx 76010



## Wick Buildings®

A product of Wick Building Systems, Inc.

...offering the solar advantage!

Mazomanie, WI 53560 • Adair, IA 50002

For new building design and pricing information, call your nearest Wick Buildings dealer listed below or phone toll free 800-356-9682, any time.

(In Wisconsin call 800-362-5457)

|                 |  |  |
|-----------------|--|--|
| <b>ILLINOIS</b> |  |  |
| Abingdon        | Lyle Roberts<br>309-462-3928             | Mason City                             |
| Arthur          | Enos Helmuth & Sons<br>217-543-2298      | Ken & Jerry Harnacke<br>217-445-2481   |
| Ashkum          | Richard Gray<br>815-698-2501             | Mazon                                  |
| Ashton          | Consol Builders & Supply<br>815-453-2442 | J.R. Enterprises<br>815-448-2406       |
| Carlinville     | Donald Bacon<br>217-627-2297             | Metropolis                             |
| Carrollton      | Jim Parkinson<br>618-576-2287            | Koch Brothers Builders<br>618-524-4565 |
| Danville        | Carl Wise<br>217-776-2462                | Monmouth                               |
| Effingham       | Curtis-Jansen<br>217-342-2159            | Phil Britt<br>309-734-6458             |
| Hardin          | Bill Parkinson<br>618-576-2287           | Paris                                  |
| Lawrenceville   | ABC Builders<br>618-943-6402             | Wilson Contracting<br>217-275-3411     |
| Lena            | Freepport Builders<br>815-563-4211       | Princeville                            |
| Lindhurst       | Don Jackson<br>312-356-1561              | Paul Streitmatter<br>309-385-4848      |
| Lyndon          | Dale Woodworth<br>815-778-4469           | Royalton                               |
|                 |  | Robert Smith<br>618-984-4470           |
|                 |  | Spring Valley                          |
|                 |  | Malooley Brothers<br>815-664-2353      |
|                 |  | Wataga                                 |
|                 |  | Harold Bramlett<br>309-375-6470        |
|                 |  | Waterman                               |
|                 |  | Little Enterprises<br>815-264-3302     |
|                 |  | <b>WISCONSIN</b>                       |
|                 |  | Genoa City                             |
|                 |  | Chuck Schuren<br>414-279-5424          |

Selected dealer territories available. Contact: Wick Buildings, Mazomanie, WI 53560 or Adair, IA 50002.

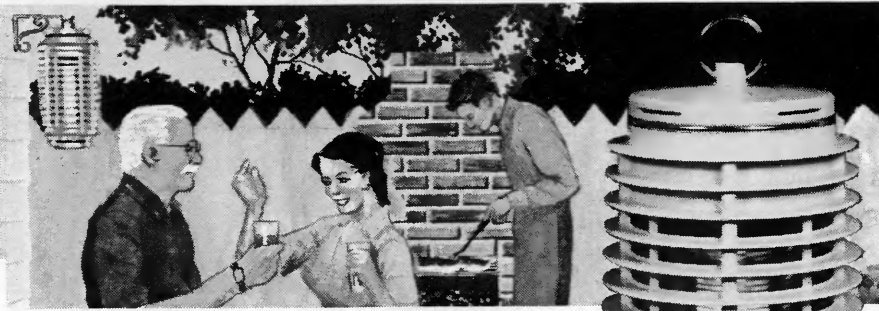
## STEEL TUBING and PIPE

12¢ per lb. and up

## ALADDIN STEEL, INC.

Rt. 16, East  
P. O. Box 89  
Gillespie, IL. 62033  
AC 217/839-2121

Thousands of sizes of  
tubing and pipe available  
at economical prices!



# New Electronic Bug Killer Clears up to a Full Acre of Insect Pests

**Insect-Aside™** is a clean, silent version of the government-developed pest killer that can't harm pets, people or the ecology. Try it free for 15 days!

Here they come—the bugs of summer. The buzzing, biting, flying insect pests that drive you off your patio, spoil your outdoor barbecues . . . pool parties, cool-of-the-evening hammock snoozes. But now you can enjoy bug-free comfort, thanks to new Insect-Aside™.

## DEVELOPED BY SCIENTISTS TO CLEAR MALARIAL SWAMPS

The heart of the Insect-Aside™ is a special type fluorescent lamp originally developed to clear swamps and protect cotton crops. Mosquitoes, gnats, moths, wasps, midges—almost 300 kinds of light-sensitive insects—are irresistibly attracted to it. And instantly, silently “zapped” by an electronic field.

## NO ANNOYING “POP”. NO DANGER TO PEOPLE. AND NO HARM TO THE ECOLOGY.

Unlike competitive devices costing up to \$150 more, Insect-Aside™ doesn't make the loud “pop” many people find so annoying. Our state-of-the-art version uses a special low-voltage electronic grid that kills bugs instantly. They drop into a receptacle you empty like a car ashtray. (It makes excellent food for birds or fertilizer for your plants.)

Since there are no poisonous liquids or sprays—no chemicals of any kind—the ecology isn't harmed in the slightest. Humans, pets, birds, even small infants, can't be hurt in any way.

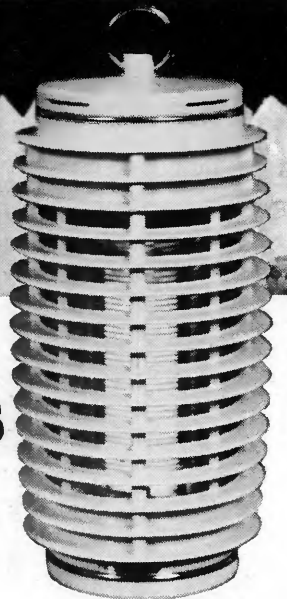
It's so safe, many people use Insect-Aside™ as a nursery night light in summer to protect babies from mosquitoes. The only danger is to the buzzing, biting, irritating flying insect pests who flock toward its cool blue light and die there.

As a matter of fact, Insect-Aside™ won't even bother the useful insects—ladybugs, butterflies, bees—that you want around to help keep your garden and plants healthy.

## U.L. LISTED FOR YOUR PROTECTION AND MADE OF SHOCKPROOF, RUSTPROOF MATERIALS

The simple, attractive lantern design stands or hangs anywhere you want protection, plugging into any AC outlet. The case is virtually indestructible plastic—the same used for phones and football helmets.

There are no moving parts. And unlike some imported models, the lamp for this American-made unit is easily replaceable. It's



*Attractive, lantern-style Insect-Aside™, 11" high and weighing 3 lbs., rids your yard or patio of mosquitoes and other harmful bugs without sprays, fogs or poisonous chemicals. U.L. listed.*

rustproof, shockproof, and UL listed for use both outdoors and indoors.

## TRY IT FOR 15 DAYS AT ABSOLUTELY NO RISK

Try Insect-Aside™ for 15 days. If it isn't everything we say, return it for a full refund. You are protected by a 1-year limited warranty of the unit (including lamp) as well as Shelburne's 26-year reputation for satisfied customers.

## YOU CAN'T BUY BETTER PROTECTION FOR TWO OR THREE TIMES THE PRICE.

Insect-Aside™ costs just \$49.95 (plus \$3.95 shipping and handling.) It's special type fluorescent lamp uses about 7¢ worth of electricity a month, and lasts 6 to 7 years in normal service. Yet it gives the same type of protection as units costing up to \$200—without their “snap, crackle, and pop.”

## ATTENTION CAMPERS AND BOATERS

Insect-Aside™ is available in a 12-volt model that plugs into any car, RV, or boat cigarette lighter. The Camper Model lures and kills insects from up to 1/2 acre for \$54.95 (plus \$3.95 shipping and handling). If you'd like to plug your Camper Model in AC current too, order it with the optional AC converter for \$66.95 plus \$4.50.

## CREDIT CARD HOLDERS

### CALL TOLL-FREE:

24 hours a Day - 7 Days a Week

**800-638-6170**

OR

**800-228-2606**

Maryland Residents Call 363-4304

To order by mail, send your check to: The Shelburne Company, 110 Painters Mill Road, Owings Mills, MD 21117. Checks should be made out to the Shelburne Company. (Maryland residents should add 5% tax).

**The Shelburne Company**

110 Painters Mill Road Dept. K69  
Owings Mills, Md 21117 (301) 363-4304  
© The Shelburne Company 1982



## JUST ONE HAND !

A completely NEW concept in gardening machines! The amazing 2-in-1 TROY-BILT® Roto Tiller is not only a wonderfully better roto tiller, it's also a wonderful compost shredder-chopper! It turns your whole garden, however large or small, into a fabulously fertile “compost pile”! So easy to handle, even for ladies and older folks. You guide it with JUST ONE HAND! For complete details, prices, “OFF-SEASON” SAVINGS, send coupon below for free booklet. TROY-BILT® Roto Tiller-Power Composters, 102nd St. & 9th Ave., Troy, New York 12180 © 1982 Garden Way

TROY-BILT® Roto Tiller-PowerComposters  
Dept. A1275  
102nd St. & 9th Ave., Troy, N.Y. 12180

Please send the whole wonderful story of TROY-BILT® Roto Tillers including prices and “OFF-SEASON” SAVINGS now in effect for a limited time.

(Please Print Clearly)

Name \_\_\_\_\_  
Address \_\_\_\_\_  
City \_\_\_\_\_ State \_\_\_\_\_ Zip \_\_\_\_\_

# SUPER SAVINGS

COMMERCIAL • AGRICULTURAL

## Century Steel Buildings

CALL TOLL-FREE  
**1-800-874-3830**  
Florida Dial 1-800-342-6301

26 Gauge Steel

Open Span

1 Beam Construction

|              |         |
|--------------|---------|
| 30 × 40 × 12 | \$3356. |
| 40 × 40 × 14 | \$4227. |
| 48 × 72 × 14 | \$7368. |

Accessories Extra

### BONDED DELIVERY

ALL STEEL - Other

Sizes Available

Limited Quantities

|              |           |
|--------------|-----------|
| 30 × 50 × 14 | \$4190.   |
| 40 × 60 × 12 | \$5943.   |
| 60 × 81 × 16 | \$10,885. |

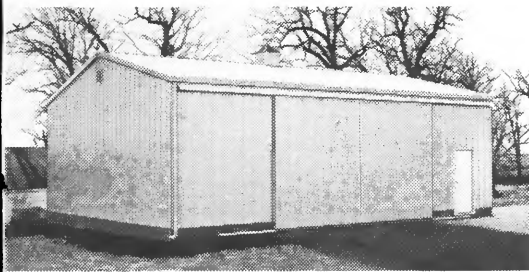
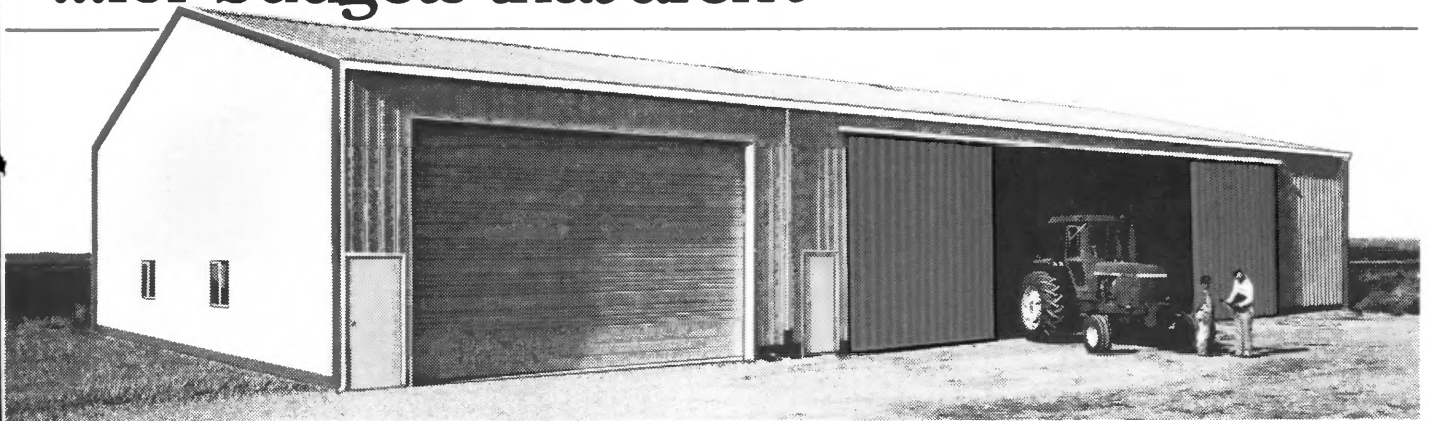
— F.O.B. FACTORY —  
52 Z 8 LOCAL ZONING MAY AFFECT PRICES

**WRITE CENTURY STEEL BUILDINGS, INC.**  
2258 Riverside Ave. Jacksonville, FL 32204

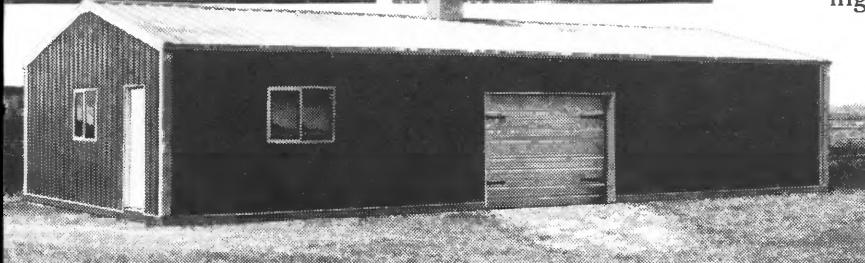
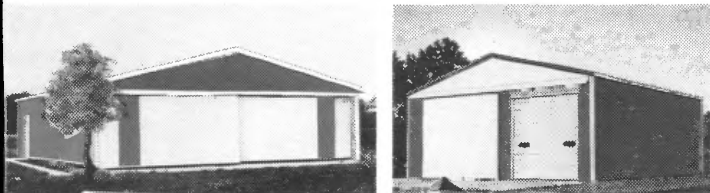
Name \_\_\_\_\_  
Address \_\_\_\_\_  
City \_\_\_\_\_ State \_\_\_\_\_  
Telephone \_\_\_\_\_ Zip \_\_\_\_\_

# Buildings Unlimited

...for budgets that aren't



Bonanza builds low cost solutions to the 'need more space' problem. Everything from utility buildings and super garages to big, clear-span farm buildings, commercial structures and horse buildings. Each designed to meet the special needs of its owner, but sharing one thing in common—*Uni-Frame construction*. Our engineered building system that adds extra strength without extra cost, and assures *controlled quality* that never varies.



Now is an excellent time to find out how little it costs to enjoy the benefits of a new Bonanza building for your home, farm or business. And your Bonanza Builder will lend a helping hand with professional planning services, assistance with financing, and practical suggestions that can save you even more money on the building you need. Call toll-free today for more information on these beautiful, maintenance-free buildings.

CALL TOLL-FREE (24 hours, 7 days)  
1-800-821-7700, Ext. 307  
or Mail Coupon Today for More Information



Originators of Uni-Frame Construction

**BONANZA BUILDINGS**

Bonanza Buildings, Inc., Box 9, Charleston, Illinois 61920

|   |       |
|---|-------|
| Name  |       |
| Address   |       |
| County  |       |
| Town  |       |
| State   | Phone |
| Check Interest: <input type="checkbox"/> Machinery Storage <input type="checkbox"/> Utility/Garage<br><input type="checkbox"/> Dairy <input type="checkbox"/> Horse <input type="checkbox"/> Hog <input type="checkbox"/> Beef <input type="checkbox"/> Business Buildings<br><input type="checkbox"/> Send information on selective Buildership opportunities. |       |





## Unique touches give old barn new life

**T**im Flach of rural Montrose has come up with a creative solution to a problem that often confronts farmers — what to do with an old barn that has, in its present form, outlived its usefulness.

He had a barn his grandfather built in 1870 and remodeled in 1900, adding a milk parlor. He needed office space for his custom crop business and wholesale fertilizer operation. Why not, he reasoned, make use of the

still-sound structure?

That is exactly what the Norris Electric Cooperative member did. “Our milking parlor was on the east side of the building,” Tim relates, “and the stanchions were metal set in concrete, so I left them there. Our main offices are on the ground floor, along with a little lounge area that we heat with a wood stove during the winter. We have wooden benches set up and usually have a coffee pot going,

too. My wife, Mary Lou, and our sons, Tony, Chris, Kevin, Dan and Gary, and I all work in the business, and we retail to nearly 200 customers and eight dealers. They serve the area for about 50 miles around.

“Behind the lounge and office, we have another room with a barn siding interior. There was a fellow over by Wheeler who was tearing down an old barn and it had a Mail Pouch Tobacco sign painted on it, so we went over and

---

*Above, the Custom Crop Service office just south of Montrose sports an unusual silo. In the photos are right, Tim displays his silo-top room. Milking stanchions greet people as they enter the building. Dennis Miller works at his desk on the first floor.*

---





got it and put it on the inside.”

The hayloft is set up for group activities, with tables and chairs placed around the room and a serving table near one wall. The hay hook has been converted into a lamp, and chandeliers help add light to the interior. Large, lazily-moving paddle-bladed fans keep the air moving. Old-time tools and equipment, used a lot when the structure was heavily used as a barn, adorn the walls, and antique pieces add atmosphere.

“We’ve been working off and on for about four years on the project,” Tim says, “and we’re still not really finished. We work on it mostly when the weather’s bad. We use the loft for meetings with our employees and customers. It’s been real popular.”

A third floor is more like a couple of balconies overlooking the loft, and it is also equipped with tables for meetings.

While barn remodelings are not too uncommon, the Flach family has gone a big step farther and have done a very interesting job of improving the old silo, too. The second floor contains a couple of nicely-appointed restrooms and the third level is still under construction. It is the top of the silo that is one of the more interesting facets of the building, however. Ten windows around the entire perimeter form a cupola that offers a splendid view of the countryside.

While the barn is an unusual part of the operation, there is much more to it. Tim and his brother, Dennis, farm about 600 acres of corn, wheat and soybeans, and the fertilizer application

service spreads about 50,000 acres a year. They have half a dozen rental buggies for farmers who would rather do the work themselves, and there is a 2,300’ airstrip just north of the barn. A few miles to the southeast, near Lis, Flach has two large storage tanks, each of which holds one-million gallons, to enable him to store liquid

fertilizer that is pipelined in from Tulsa.

While the Flach Family operates Custom Crop Service out of a building that first saw use more than 100 years ago, there is nothing old-fashioned about their philosophy of doing business, except for the friendly, personal service.



THIS “WELCOMING COMMITTEE” MAY SEEM TO BE A BIT UNUSUAL.

## America’s Largest and Greatest Wild Animal Park Located in Ozark Mountain Country



BLACK BEARS STOP TRAFFIC

Just a few minutes drive from and all other points of interest in Ozark Mountain Country is Exotic Animal Paradise. This is one of Missouri’s largest and most popular attractions and it offers the whole family an adventure in vacationing with its 400 acres of tamed exotic wilderness.

Over 3,000 wild animals and rare birds from around the world roam free, and you can see and feed them from the safety and comfort of your own car. Exotic Animal Paradise is the largest and greatest wild animal park on the North American continent.

See herds of elk, buffalo, deer, ostrich, eland, antelope, zebra, bear, llamas, and many more too numerous to mention. Black bears will stop your car for a handout. It’s an adventure you’ll never forget. Don’t forget your camera, the park is a haven for pictures.

Over nine miles of paved road takes you through this wonderland of lakes, woods, wild animals and rare birds. Take as much time as you like, but save some for the Safari-Center where you will see the Big Cats — Lions, Tigers, Leopards and other animals. There’s a petting zoo area for the children, rest rooms, snack bar and two of the greatest souvenir shops in the Ozarks.

Exotic Animal Paradise is open daily year round from 8 a.m. to one hour before sunset. It is AAA and USDA approved. It’s a wonderful place for bus tours, senior citizen groups and school groups. Admission prices are \$5 for adults; \$3 for children under age 12. For group information, please call or write: VISA or MASTERCARD ACCEPTED

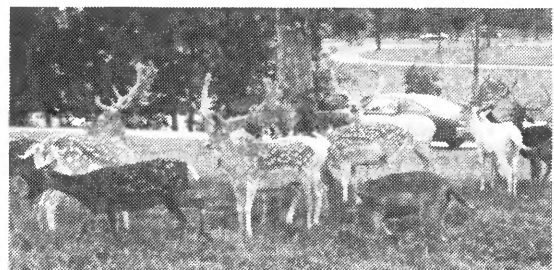
### EXOTIC ANIMAL PARADISE

Route 1, Box 270, Strafford, MO 65757  
(417) 468-2016

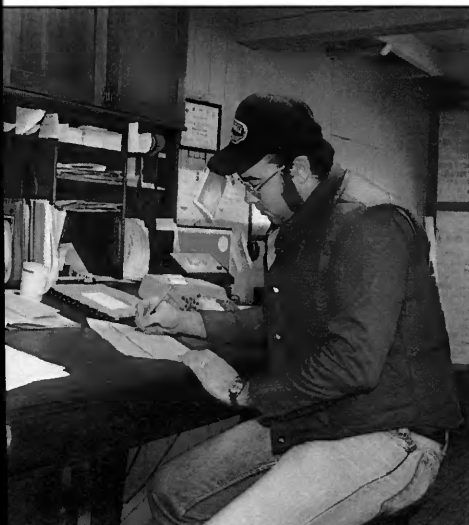
Just a few minutes drive  
from Springfield, Missouri



OSTRICH FROM AFRICA



FALLOW DEER FROM EUROPE



# TRADING POST

## Miscellaneous

Used and new restaurant and concession equipment. Ice machines, grills, fryers, sinks, poppers, ice cream machines, etc. Erio Sales, 2615 So. 1st., Springfield (217) 522-3934.

POLE BUILDINGS for garages, workshops, storage, warehouses, horse barns, farms, etc. priced at \$3,550.00 for a 24' x 40' building completely erected with overhead and service doors. Larger sizes available. Call toll-free 1-800-253-5463, 7 a.m. to 7 p.m. PHOENIX BUILDINGS

HYMNS — play by ear. Add chords. New book — piano, organ. Anyone can learn \$5.98. Davidsons, 6727 RI Metcalf, Shawnee Mission, Kansas 66204.

WORK CLOTHES by Oshkosh B'gosh. Send for free mail-order catalog — Men's and boys' Strauss', 100 George St., Alton, IL 62002

Used meat saws, slicers, grinders, tenders and other butchering equipment. 2615 South 1st., Springfield, Ill. Phone (217) 522-3934.

Europe 1982 considerably lower \* Additional Discounts \* Tours \* Cruises \* Vacations \* Anywhere \* Discounts \* Travel Agent, P. O. Box 13486, Savannah, Georgia 31406, Write Today.

WHY DIE WITHOUT A WILL? Two Legal "Will Forms" and Easy instructions. Only \$3...Guaranteed! Order today!! TYCO. Box 752-RE, Pryor, OK 74361.

STRAWBERRY PLANTS: Cyclone, Surecrop, Trumpeter, Blakemore, Robinson, Dunlap, Stoplight, Paymaster. 50-\$6.50, 100-\$8.50, 250-\$19.00. EVERBEARING: Ozark-Beauty, Ogallala, Streamliner. 50-\$8.75 100-\$13.00. ASPARAGUS: 20-2 yr.-\$3.75 POSTPAID Farmington Plant Farm, Farmington, Iowa 52626 St. Cert. 263.

OLD SLOT MACHINES AND 78 RPM WURLITZER JUKEBOXES WANTED BY COLLECTOR; ANY COND. TOP CASH PAID. CALL COLLECT (314) 962-9265

BABY CHICKS — Over 40 varieties of rare and fancy breeds, old time favorites, Bantams, plus nation's best popular laying breeds. Chicks for every requirement, large poultryman, small raiser, hobbyist and 4-H boy and girl. Poultry show winners from coast to coast, 100% live arrival guaranteed. Send for Free Colorful catalog. Marti Poultry Farm, Box 27-7, Windsor, Missouri 65360.

FREE — Five free chicks with each order. Raise chickens (also Bantams and Ducks) for meat and eggs. We ship parcel post all 50 states. Send for big, free picture catalog. Shows over 35 rare, exotic and standard breeds. 25 chicks as low as \$6.95; 50 for \$8.95; 100 for \$13.95; fob. Clinton Hatchery, Inc., Box 548-R16, Clinton, Missouri 64735, Telephone 816 885-8500.

## "GOOD AS GOLD" PLAN!



Easy-to-raise chickens. Beat high meat prices AND sell for extra money. Get healthy Gold Bond Chicks for \$8.95 per 100 plus postage, with BONUS how to profit plan with eggs and meat. Eat well, build a nice business. ORDER DIRECT NOW. WE SHIP C.O.D. Send name and address to:

GOLD BOND CHICKS  
P.O. BOX 474, MAYTOWN, PENNA.  
17550

Ringneck, ornamental pheasants; bobwhite, ornamental quail; bantams, turkeys, peacocks, partridge, parakeets, cockatiels, dwarf rabbits. Eggs, chicks, grown birds. Stamp for prices. Pierce's Game Farm, Rt. 5, Dept R, Princeton, IL 61356 (815) 699-2638.

Top quality poultry at reasonable prices. Chicks for eggs, meat or novelty. Also Guinea, Goslings, Ducks, Turkeys. Picture brochure 50 cents. Country Hatchery, Wewoka, Oklahoma 74884.

SATELLITE RECEIVER 10 foot Fiberglass dishes sold factory direct — guaranteed. Mounts — Complete electronic systems available. TURNER MARINE, R. R. 1, Neoga, Ill 62447, Ph: 217 895-3395.

KODACOLOR FILM DEVELOPED AND PRINTED. Size 110, 126, 135. 12 exp — \$1.75 postpaid per roll. 24 ext. — \$3.00 postpaid per roll. Enclose ad with order. Offer expires 10/31/82. Skrudland Photo, Dept. 705, Highway H North, Lake Geneva, Wisconsin 53147.

WORK CLOTHES!! Reconditioned work pants \$3.00; new \$10.95. Reconditioned work shirts \$3.00; new \$8.95. Satisfaction guaranteed! Free delivery! Send 50 cents for catalog. Workmen's Garment Co. 15305-15205-8 Wyoming, Detroit, Michigan 48238. Our 28th year!

BUILD ELECTRIC BUG ZAPPER FOR \$10. Free information or send \$2.00 for plans. Morgan Enterprises, 1018 Elmwood, Peoria, Illinois 61606-1120.

Double yes even triple your gas mileage with a carburetion system that you can build yourself. Free details. H&A Knies RT 2-IL, Bowling Green, Missouri 63334.

## Farms, Real Estate

NEW... FREE... SUMMER CATALOG! Top real estate values coast to coast! Please specify type property and location desired. UNITED FARM AGENCY, 2012-RN Tribune Tower, 435 North Michigan, Chicago, IL 60611.

## Auction Schools

"REISCH WORLD WIDE COLLEGE OF AUCTIONEERING, INC. World Largest — 46 years. Term soon. Free catalog. Approved for VA. Modern Auction Library "FREE" with enrollment, 515-423-5242. Col. Gordon E. Taylor; P. O. Box 949, Dept. C; Mason City, Iowa 50401.

## Of Interest to Women

WALLCOVERINGS — SAVE HALF: 1981-82 CATALOG. Regular wallpaper: \$1.45 — \$1.85 single roll. 50 samples, 98 selections including prepasted, strippables, vinyls, flocks. Send 35 cents: Mutual Wallpaper, Dept. 462, 812 West Main, Louisville, Kentucky 40202.

PECANS. QUART EACH HALVES, PIECES, MEAL. THREE-QUART SAMPLER \$11.95 POSTPAID. TENPECO, Box 638, RUTHERFORD, TN 38369. GUARANTEED FRESH! DELICIOUS!

NOW! FROZEN TOMATO SLICES! Enjoy garden fresh flavor, year around! Complete, easy, instructions. \$1.00 Hamiltons, Box 652-41 New Ulm, Minn. 56073.

COLDWATER DILLPICKLES! Can in minutes! No hot brine. Delicious, Crisp. Factory Secrets! Recipe \$1.00 Hamiltons, Box 652-41, New Ulm, MN 56073.

WHOLESALE SPICES: Top quality and freshly ground. Save per ounce. FREE CATALOG: SASE, THE SPICERY, Box 5446, Fort Wayne, IN., 46815.

"SUGAR-LESS COOKBOOK" No honey — No artificial sweeteners — No sugar added. — Specially created — Cakes, cookies, pies, jam, candy, desserts. — (Few use cereals) — \$5.95 Postage paid — Ideal gifts — 2 books \$10.95 — 3 books \$14.95 — (Satisfaction guaranteed) AD-DEE PUBLISHERS, INC., DRAWER 5426-IL5, EUGENE, OREGON 97405.

## Horses Wanted

Want to buy part or full thoroughbred horse. 16 hands or over. Write Anderson, P. O. Box 265, Wayne, IL 60184.

## Farm Machinery, Equipment

TRENCHERS  
New and Used — \$750 and up  
OZARK TRENCHER SALES  
107 Troy Road, Collinsville,  
MO. 62234. Phone 618 345-6262

WINCO STANDBY GENERATORS  
In stock PTO units and Automatic Standby Units. Brochure available. For information call: Tom Bauer, R. R. 2, Gillespie 62033 (618) 362-6441

## ORDER FORM

Illinois Rural Electric News  
P.O. Box 3787  
Springfield, Illinois 62708

Please enter my name as a subscriber to IREN magazine. I am enclosing \$3 for each one-year subscription.

name \_\_\_\_\_

address \_\_\_\_\_

zip \_\_\_\_\_





4695  
SIZES 8-18



9231  
8-18



4764  
SIZES 34-50



9349  
SIZES 8-20



4862  
10 1/2-24 1/2



4882  
8-20



9308  
SIZES 34-50



4743  
10 1/2-20 1/2



9335  
SIZES 10 1/2-18 1/2



4842  
SIZES 2-8



4574  
SIZES 8-18



SIZES 8-10  
M-12-14  
L-16-18  
4938

XXXXXX XXX XXXXXXXX XXXXXXXX XXXXXXXX XXXXXXXX XXXXXXXX  
 XX XX XXXX XX XX XX XX XX XX XX XX XX XX XX XX XX XX XX  
 XXXXX XXXXX XX XX XX XX XX XX XX XX XX XX XX XX XX XX XX  
 XX XX XX XX XX XX XX XX XX XX XX XX XX XX XX XX XX XX XX  
 XXX XX XXX XXXX XXXX XXXXXXXX XXX XXX XXX XXX XXX XXX

- No. 4695 is cut in sizes 8, 10, 12, 14, 16, 18. Size 12 (bust 34) jumpsuit 2 yards 60-inch fabric.
- No. 9231 is cut in sizes 8, 10, 12, 14, 16, 18. Size 12 (bust 34) takes 2-1/8 yards 60-inch fabric.
- No. 4764 is cut in Women's sizes 34, 36, 38, 40, 42, 44, 46, 48, 50. Yardages given in pattern.
- No. 9349 is cut in sizes 8, 10, 12, 14, 16, 18, 20. Size 12 (bust 34) takes 2-3/4 yards 60-inch fabric.
- No. 4862 is cut in sizes 10 1/2, 12 1/2, 14 1/2, 16 1/2, 18 1/2, 20 1/2, 22 1/2, 24 1/2. Size 14 1/2 (bust 37) takes 2-3/4 yards 45-inch.
- No. 4882 is cut in sizes 8, 10, 12, 14, 16, 18, 20. V-neck 1 1/4 yards 45-inch; sun top 1-1/8; other 1 1/4.
- No. 9308 is cut in sizes Women's 34, 36, 38, 40, 42, 44, 46, 48, 50. See pattern for yardages.
- No. 4743 is cut in sizes 10 1/2, 12 1/2, 14 1/2, 16 1/2, 18 1/2, 20 1/2. Size 14 1/2 (bust 37) takes 3-3/8 yards 45-inch.
- No. 9335 is cut in sizes 10 1/2, 12 1/2, 14 1/2, 16 1/2, 18 1/2. Size 14 1/2 (bust 37) takes 2-3/4 yards 60-inch fabric.
- No. 4842 is cut in Child's sizes 2, 4, 6, 8. Size 6 takes 1-5/8 yards 45-inch fabric.
- No. 4574 is cut in sizes 8, 10, 12, 14, 16, 18. Size 12 (bust 34) jacket 1-3/4 yards 54-inch; culottes 1-3/4.
- No. 4938 is cut in sizes small (8-10); Medium (12-14); Large (16-18). Medium takes 1-5/8 yards 45-inch.

TO: PATTERNS  
 Illinois Rural Electric News  
 P.O. Box 3787  
 Springfield, IL 62708

I have enclosed \$\_\_\_\_\_ (\$2.00 per pattern - cash, check or money order accepted) for the following patterns:

| Pattern No. | Size  | Pattern No. | Size  |
|-------------|-------|-------------|-------|
| _____       | _____ | _____       | _____ |
| _____       | _____ | _____       | _____ |
| _____       | _____ | _____       | _____ |

Print Name \_\_\_\_\_  
 Address \_\_\_\_\_  
 City \_\_\_\_\_  
 State \_\_\_\_\_ Zip \_\_\_\_\_

# TURN YOU DOWN?? NOT US!!

**“CO-OP” HOSPITAL INSURANCE  
GUARANTEES  
YOU WILL BE ACCEPTED!**

**CHECK IT OUT** ✓

- ✓ **PAYS YOU up to \$50 A DAY / \$350 A WEEK / \$1500 A MONTH!**
- ✓ **PAYS YOU for the first day and everyday you're in the hospital for a covered illness or accident!**
- ✓ **PAYS YOU DOUBLE benefits after 90 days in the hospital!**
- ✓ **PAYS YOU regardless of how many times you are in the hospital – NO LIMIT TO YOUR TOTAL BENEFITS!**
- ✓ **PAYS YOU up to \$5000 accidental death benefit!**
- ✓ **PAYS YOU in addition to other insurance you have!**
- ✓ **YOU WILL BE ACCEPTED regardless of your age, health, or occupation!**

Send coupon **TODAY**  
for  
**FREE** information  
on how you can  
**“CO-OP”**  
your hospital bills!

*No Agent  
Will Call You!*

**MAY 1982 OPEN ENROLLMENT FOR  
ILLINOIS RURAL ELECTRIC MEMBERS**

*No Risk/  
No Obligation*

MAIL TO:

**CO-OP INSURANCE FUND**

2015 Peachtree Road, N.E. / Atlanta, GA 30309

Please Print Name \_\_\_\_\_

Street Address (or RFD) \_\_\_\_\_

City/Town \_\_\_\_\_ State \_\_\_\_\_ Zip \_\_\_\_\_

*Please send me information for the following*

Male – Birthdate \_\_\_\_\_  
IL-5 \_\_\_\_\_ Month/Day/Year

Female – Birthdate \_\_\_\_\_  
\_\_\_\_\_ Month/Day/Year