

# MONROE

## ELECTRIC NEWS

Your Touchstone Energy® Partner 

Waterloo, Illinois • 618.939.7171 • 800.757.7433

Join us for our

# 73rd ANNUAL MEETING OF MEMBERS

Monday, March 21, 2011 to be held at the Hecker Community Center in Hecker, Illinois

### Schedule of events:

4:30 p.m – 6:00 p.m.	Registration begins Meal serving (fried chicken dinner) \Health fair and business expo
5:00 p.m.	Entertainment provided by Duane Grapperhaus
6:30 p.m.	Official Business Meeting begins
7:30 p.m.	(Or after business meeting) Speaker for the evening, Jeffrey Jenna
8:00 p.m.	(Or after speaker) Attendance prize winners announced



## 73rd Annual Meeting of Members

Monroe County Electric Cooperative's 73rd Annual Meeting of Members will be held Monday, March 21, at the Hecker Community Center in Hecker, Ill. The business meeting is scheduled to begin at 6:30 p.m. Please note on your calendars that our start times are moved up one half hour over previous years.

Registration and pre-meeting activities start at 4:30 p.m. Duane Grapperhaus will again provide pre-meeting entertainment. A fried chicken plate will be served between 4:30 p.m. to 6:00 p.m. Guest speaker for the evening will be Jeffrey Jena, public speaker and humorist.

Various health-related services and organizations will have information booths during a Mini Health Fair that will begin at 4:30 p.m. There will be displays of Direct TV by Harrisonville Telephone Co., Schaefer Water Systems and a variety of health organizations for a health fair.

During the business meeting, you will hear and approve reports of directors and officers, elect three

members to serve three-year terms to the cooperative's board of directors, and act on other business that may come before the meeting.

Directors whose terms expire and are eligible for re-election are: George Obernagel, District 4; and Ross Mueller, District 6. Terry Grommet from District 5, has decided not to run again.

President/CEO Alan Wattles and newly elected Board Chairman Larry Kraft will each give reports on cooperative activity over the past year and a give us a look into the future.

Registered members in attendance will receive a calculator. Attendance prizes will be awarded at the conclusion of the meeting.

Mark your calendar and plan on joining us on March 21. Again, registration and pre-meeting activities begin earlier this year at 4:30 p.m. The business meeting will start at 6:30 p.m. So come attend your Annual Meeting for an enjoyable evening of good food/music, information about your cooperative and some fun!



## Featured speaker for Annual Meeting – Jeffrey Jena

In his 30 years as a stand-up comic, Jeffrey Jena has appeared on over 35 national television shows, including The Dennis Miller show, HBO, and Comics Unleashed and many other cable television shows.

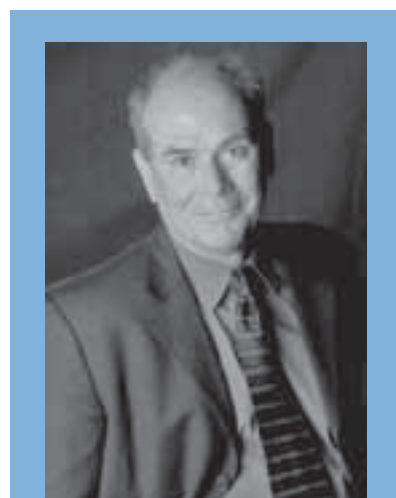
Raised in Ashland, Kentucky he learned to deal with his seven brother and sisters, grandmother and various other relatives by using humor. "I always wanted to be a comedian," says Jeff, "but when you come from a small town in Kentucky it isn't one of the options they present on career day at school."

After graduating from college Jeff taught middle school math and sci-

ence for seven years. "If that doesn't test your sense of humor nothing will!" he says. Jeff now spends his spare time golfing, coaching his son's sports teams and doing what Mrs. Jena tells him to do at church. "My wife is a Methodist minister. I don't get to volunteer, I get volun-told!" Jeff jokes.

Jeff has been married to Carrie for 20 years, has a son and now makes his home in a small town in Ohio.

So come on out to your cooperative's 73rd Annual Meeting of Members, share a meal with us and let Jeffrey entertain you at the conclusion of our annual meeting.



Jeffrey Jena

# Allergy alert

## Protect yourself from springtime allergy attacks

The arrival of spring brings sunlight and flowers and green leaves on the trees — and seasonal allergies. Tree pollens and mold spores can wreak havoc on the 35 million Americans who suffer itchy eyes, runny noses, scratchy throats, and fatigue due to allergies.

Beyond the many over-the-counter and prescription medications available, you can take some simple steps to reduce your misery:

1. Limit your exposure. After months of cabin fever, staying inside with the windows shut tight may seem a shame on a lovely day, but consider the alternative: sneezing and wheezing and rubbing your eyes nonstop. Stay indoors when conditions are ripe for an allergy attack.
2. Plan your outings. Rainy and non-windy days are best for keeping pollen at bay. Remember, too, that pollen counts peak in the midday

hours. Avoid grassy and wooded areas. Check your local news source for pollen counts.

3. Park strategically. Pollen can coat your car on heavy days. Keep your car in the garage as much as possible. When you park outside, try to avoid parking under a tree. Your car may be cooler when you get into it, but you'll be less likely to get a nose full of pollen in the process of opening the door.

4. Scrub up. When you come back into your home, remove your shoes, or at least do a thorough job of wiping residual pollen from them. And wash your hands (you may even want to shower and get into some pollen-free duds). When you wash your clothes, use a dryer, rather than an outdoor clothesline.

5. Avoid "pollen magnets." Pollen can cling to carpets and linens, so vacuum your rugs and change your sheets more frequently than at other times of the year. That goes for bath towels, too. An in-home air filtration system can help remove irritating particulates.

## A different kind of retirement planning

People over 40 shouldn't just plan for retirement, they should rehearse for it.

Because retirement can last 20 to 30 years, it's more important than ever that "pre-retirees" (those who plan to retire in five to seven years) practice how they want to live without work as the organizational focus of their lives:

- Try out different retirement lifestyles. For example, many people dream of selling the family home and traveling in an RV or going abroad. Practice this by renting a camper and going on the road for a long vacation. You may discover that travel is exhausting or boring. The same holds true for relocation dreams. Rent a home where you think you may want to retire to see if it really is where you'd like to move. The weather may not suit

you, or the community may not be your cup of tea. Work these details out before you commit to an expensive change.

- Live with your spouse 24 hours a day. Most couples spend much of their early years working and, thus, spending much of their time apart. It may take some time to get used to the other person's schedule, habits, and routines.
- Practice living on a retirement budget. Most retirees' income is significantly less than their preretirement income. Add up all the Social



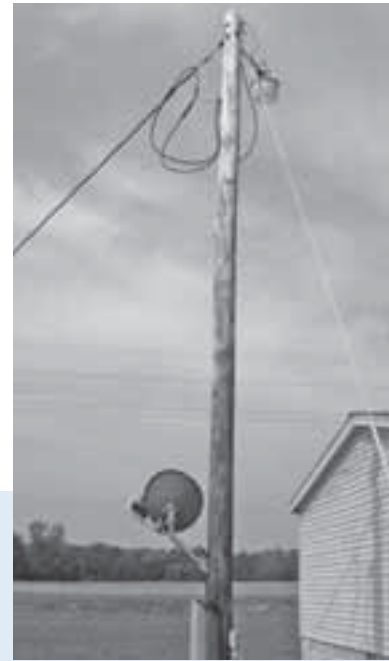
Security benefits, pension income, and 401(k) and IRA savings to calculate what you can realistically expect to live on each month. Then live on that amount for a month to determine what changes, if any, you need to make to your plans.

# Keep everyone safe

## Do NOT install equipment on Cooperative poles

**D**ue to safety concerns for our linemen and property owners, the Cooperative does not allow satellite dishes to be attached to Cooperative poles. If you are considering the installation of a satellite dish, make sure the installer knows not to mount it on a Cooperative pole. The electric lines attached to the pole cause a hazard to the installer, and the dish causes a hazard to linemen who may need to climb the pole. Cooperative linemen also do not want to dam-

age your equipment if they need to climb the pole. Other items such as signs, antennas, birdhouses, and owner-furnished security lights are also not allowed on Cooperative poles. If you have an existing installation that needs to be removed, please contact us so that Cooperative personnel can safely remove the item. Remember to educate family members, children, and everyone else on the dangers of overhead power lines.



***The electric lines attached to the pole cause a hazard to the installer, and the dish causes a hazard to linemen who may need to climb the pole.***

## MCEC Line Outages - January 2011

Date	Duration	# Out	Location	Cause Desc	Sub
01/04/11	1:20	41	Wetzler & LL Rd	VANDALISM	Fults
01/12/11	3:40	123	Coxeyville Rd	OTHER, DETERIORATION	N. Waterloo
01/13/11	1:57	69	Kopp Rd	EQUIPMENT	N. Waterloo

### Monroe County Electric Co-Operative, Inc.

6132 State Rt. 3, P.O. Box 128, Waterloo, Illinois 62298 • 618-939-7171  
Office hours: Monday through Friday 7:30 a.m. to 4:30 p.m. • 800-757-7433