

Menard Electric Cooperative's

Connect to MEC

A Touchstone Energy® Cooperative



www.menard.com

Portable generator safety

Important!

Never, ever plug a portable generator directly into one of your home's outlets—unless you have had a licensed electrician install a transfer switch in your home.

If you don't have a transfer switch, power provided by the generator can backfeed along power lines, which can electrocute a lineman working on those lines or others who may come into contact with downed lines during a storm.

In addition, portable generators create carbon monoxide, the odorless, colorless gas that can quickly become deadly if the generator isn't exhausted outside. Attached garages with an open door don't count—the carbon monoxide can still seep indoors and poison inhabitants. Generators must go outside in a dry area, which might mean you'll need to rig a canopy to

protect it from precipitation at a safe distance from your home's windows, doors, and vents. How far is a safe distance? Even 15 feet can be too close.

Other things to keep in mind: Plug appliances directly into the generator using heavy-duty, outdoor-rated extension cords, but don't overload it and follow the manufacturer's instructions for maximum load and cord distance. Shut off the generator before refueling, or a fire could start—and keep a fully charged fire extinguisher nearby, just in case. Also remember to follow directions and perform regular maintenance between uses.

Source: NRECA



**Looking to purchase a generator?
Call our office first and ask to
speak to a field engineer.**

Thank You

This is the time of year many people take note of all the things they are thankful for in their lives. As an electric cooperative, we want to take this time to thank YOU, our members. After all, as a member-owned and operated utility we wouldn't exist without you!

Tip of the Month

Lighting

Lights are on longer as the sun sets earlier now that Daylight Savings Time is ending. Bulb options have changed a lot over the last few years. When replacing bulbs, take your time to read packaging and choose the most energy-efficient lighting option. You'll save money for years to come. Also investigate motion sensors and timers for outdoor lighting and holiday displays.

 Find us on Facebook

Find us on Facebook at www.facebook.com/MenardElectric.

It is a great way to stay informed about your cooperative!

Powering Up

When electricity goes out, most of us expect power will be restored within a few hours. But when a major storm causes widespread damage, longer outages may result. Co-op line crews work long, hard hours to restore service safely to the greatest number of consumers in the shortest time possible. Here's what's going on if you find yourself in the dark.

1 High-Voltage Transmission Lines

Transmission towers and cables that supply power to transmission substations (and thousands of members) rarely fail. But when damaged, these facilities must be repaired before other parts of the system can operate.

2 Distribution Substation

Each substation serves hundreds or thousands of consumers. When a major outage occurs, line crews inspect substations to determine if problems stem from transmission lines feeding into the substation, the substation itself, or if problems exist down the line.

3 Main Distribution Lines

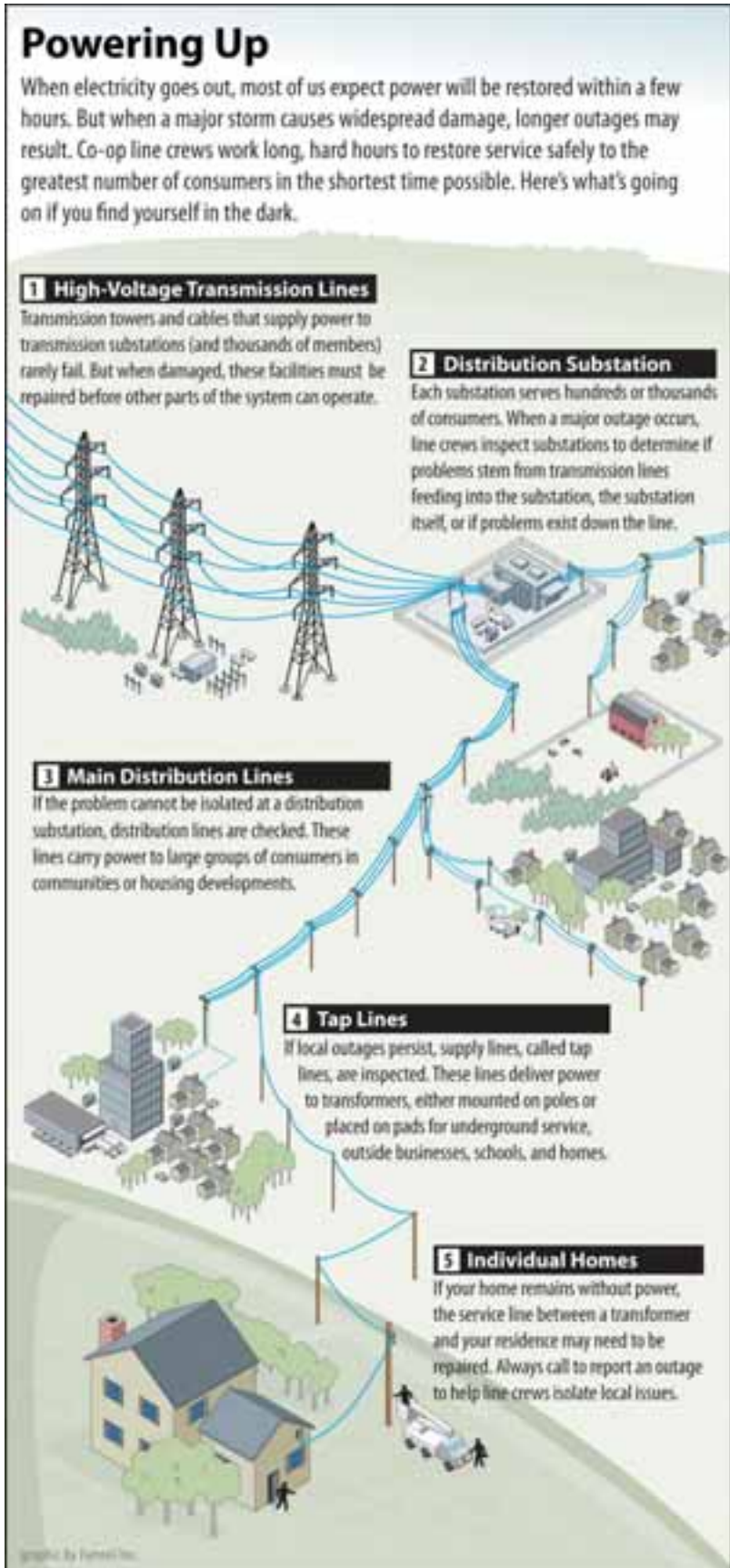
If the problem cannot be isolated at a distribution substation, distribution lines are checked. These lines carry power to large groups of consumers in communities or housing developments.

4 Tap Lines

If local outages persist, supply lines, called tap lines, are inspected. These lines deliver power to transformers, either mounted on poles or placed on pads for underground service, outside businesses, schools, and homes.

5 Individual Homes

If your home remains without power, the service line between a transformer and your residence may need to be repaired. Always call to report an outage to help line crews isolate local issues.



Attention High School Seniors \$2,000 Scholarships Available

Thomas H. Moore Illinois Electric Cooperatives Memorial Scholarship Program



Apply at www.menard.com

Deadline: December 31, 2015

5 scholarships – for children of IL electric co-op members

3 scholarships – for children of IL electric co-op members, employees or directors who are enrolling full-time at an IL community college

1 scholarship – for a child of an IL electric co-op employee or director



LaVern and Nola McEntire Lineworker's Scholarship

For Lineworker School at Lincoln Land Community College

Applications at www.menard.com

Deadline: April 30, 2016

Must be: child of co-op member, relative of co-op employee or director, already enrolled in lineworker school, or have served or are serving in the armed forces or National Guard



Automatic Payment

See the back of your bill for an automatic payment form. Just fill it out and send it in with your payment by the 28th. We will start drafting your account the next month and you'll still receive your bill so you'll know how much to deduct on the 17th. It couldn't be any easier to ensure your payment is here on time!



14300 State Hwy 97
P.O. Box 200, Petersburg, IL 62675

1-800-872-1203 • 217-632-7746

www.menard.com

This institution is an equal opportunity provider and employer.



www.facebook.com/MenardElectric

Board Meeting Report

For full minutes please visit our website at www.menard.com or contact our office.

Present were Manager Eric Hobbie, Attorney Charles Smith and Directors Jay Frye, Jerry Brooks, Warren Goetsch, Gary Martin, Donald McMillan, Michael Patrick, Roy Seaney, Jodine Tate and Steven Worner.

Manager Hobbie advised rate for Worker's Compensation through Federated Insurance Company would go from a .81 to a .82 for next year with little to no change in the premium.

He reported that health insurance

was probably going up by 4% for next year.

Hobbie reported on meeting with Joe Smith to discuss IT issues.

He discussed Region V Election. Warren Goetsch was nominated as the Federated Delegate.

Board went into executive session.

Hobbie presented the financial report for the month of July. Year to date margins were \$1,422,428 compared to \$954,938 a year earlier. Equity as of the end of July was 37.27% and the number of member

accounts served was 10,796 compared to 10,757 a year ago. Net Utility Plant at the end of July was \$43,561,957 compared to \$42,548,867 last year. The cooperative continues to meet the requirements of the RUS, FFB and NRUCFC.

Goetsch discussed the NRECA International Program and whether Board was interested in participating in some way.

Director Martin discussed the departure of Jay Bartlett from Prairie Power.

LIHEAP program

Need help paying your electric bill? The Low Income Home Energy Assistance Program (LIHEAP) may be able to help. We encourage you to contact your local office as soon as possible if you believe you may qualify to receive benefits. If you do, a one-time lump sum payment is paid directly to us on your behalf. Payment is based upon the number of people in your household and their combined 30-day gross monthly income.

Community Action Partnership of Central Illinois (CAPCIL)

www.capcil.info
Logan County-217-732-2159
Mason County-309-543-6988
Menard County-217-632-3878

Decatur-Macon County Opportunity Corp.

217-428-2193
www.dmcoc.org

MCS Community Services

(Cass & Morgan County)
217-243-9404
www.morgancounty-il.com

Sangamon County Dept. of Community Resources

217-535-3120
www.co.sangamon.il.us

Tazwood Community Service, Inc. (Tazewell County)

309-694-4391
www.tazwoodcs.org



Online Payment

Log onto www.menard.com and click on **Online Bill Payment** to pay your bill by credit card each month. You can also check out your account history here, including monthly, daily or even hourly usage readings.

**Our office will be closed
Nov. 11 for Veterans Day
and Nov. 26 & 27 for
Thanksgiving.**

