

# NEWS, NOTES & VIEWS 01/10



Sam Surratt goes over the days accomplishments with Mike Paalhar, facing camera, and Ed Dolen, back to camera.

## COPPER REPLACEMENT PROGRAM

Portions of the electric system date back to the 1940s and 1950s, and they need to be replaced to improve service. In 2010, we'll replace over eighty miles of line, as part of a program to rebuild the distribution system over a period of time roughly equal to its useful life. Most of the construction will be done by contractors based on competitive bidding.

It's critical to closely supervise contractors' work, and we recently created a new position to do that. Sam Surratt, with over 12 years experience as a journeyman linemen, has been promoted to the position of construction supervisor. We followed him to visit one of the contractor crews, working in Greene County, to check its progress.



### Illinois Rural Electric Cooperative

P.O. Box 80, Two South Main Street  
Winchester, Illinois 62694

[www.e-co-op.com](http://www.e-co-op.com)  
1-800-468-4732

Your Touchstone Energy® Partner



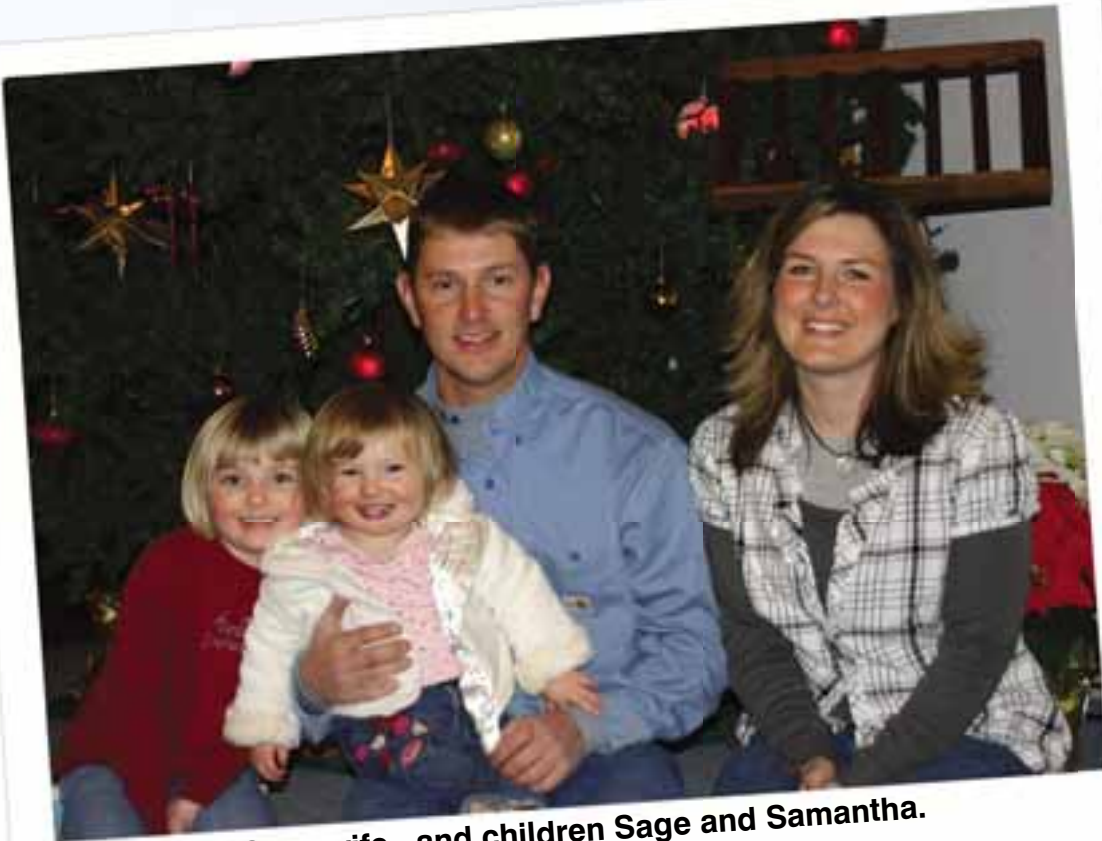
It is Sam's job to ensure:

- 1.) That the contractors treat the member's property respectfully.
- 2.) The job is done just as it should be.

Sam starts his morning driving through the Illinois country side to a set of poles called the "D Line" in Greene County. A crew of 12 is working on each end of the line putting up poles and making sure they don't destroy the land they are working on.

The "D Line" runs from Murryville to Greenfield. It's a "3 Phase Feeder," meaning it's the main connection between substations, from which many members are served. This particular upgrade will improve the reliability to a few hundred members during wind, ice and snow storms. The new poles are twice as large as the ones being replaced and the wires are three times larger.

The contractor's foreman, Mike Paalhar, needed some supplies for the next day so Sam will make sure the supplies are on the job when needed.

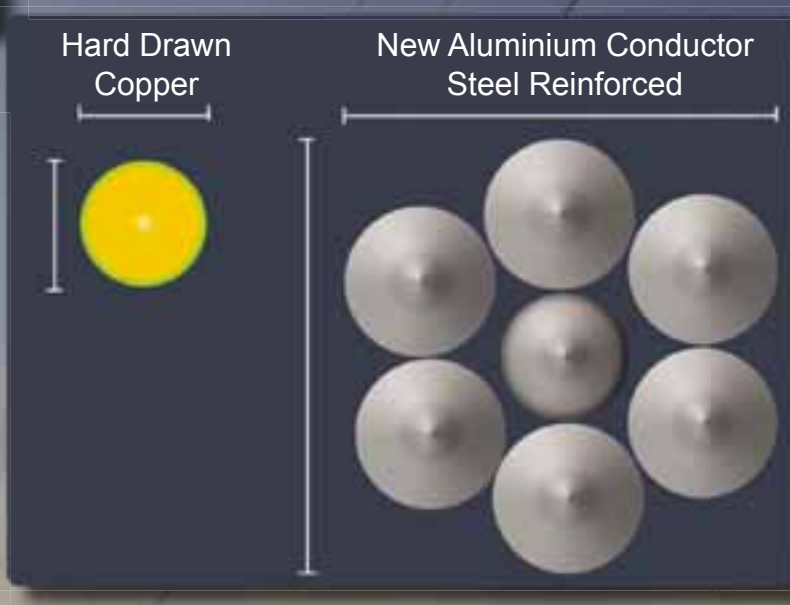


Sam, wife and children Sage and Samantha.

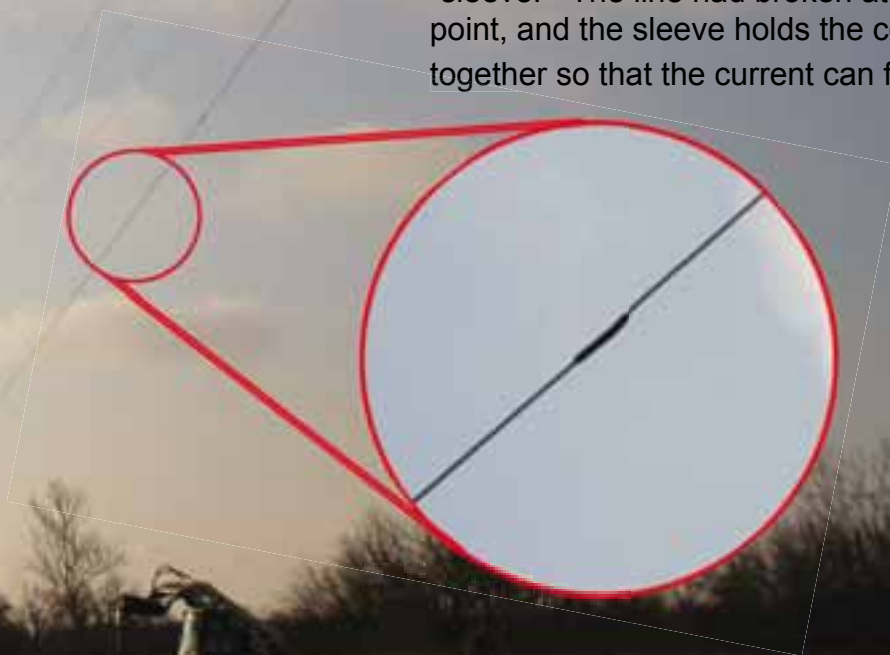
Linemen prep an old pole for replacement.

## THE REPLACEMENTS

The size of new lines is bigger, stronger and most importantly, safer and more reliable. Some of the old hard drawn copper line falls down under relatively little, icy snow. The new aluminium conductor with a steel reinforcement is almost never seen on the ground in a major storm.



The thicker part of this line is actually a "sleeve." The line had broken at some point, and the sleeve holds the copper together so that the current can flow.



# BUSY?

## Use Easy-to-Pay!

Members can use **Easy-to-Pay** to pay their electric, water, and internet over the phone.



Brandon Moore, Internet Specialist, at his desk.

Call **1-800-468-4732** or come in and talk to a Customer Service Representative to get signed up today.

Already signed up?

**Call 1-888-488-0086**