

What's Inside

Youth to Washington 16a
Ingram, Gorrell participate

Improve System Reliability. . . . 16b & 16c
Major construction update

Capital Credit Refunds. 16d
1966 to 1968 checks mailed August
For years of service 1966-1968

Farm Progress Show 16e
Come visit the IL electric co-ops!

More Wind Power. . . 16f
Commitment to renewable energy

Insulating Your Attic 16g
More is better

Reinventing Incandescent Light Bulb 16h
Options and deadlines

Local youth represent EnerStar in Washington



Amanda Ingram of Chrisman and Diane Gorrell of Marshall represented EnerStar Electric Cooperative in Washington, D.C., during the annual "Youth to Washington Tour," June 10-17. This event, sponsored by the electric and telephone cooperatives of Illinois since the late 1950s, is an introduction for rural youth to our democratic form of government and cooperatives.

The students met with Congressman Tim Johnson and were among 76 rural Illinois youth leaders selected for the trip. The Illinois students joined more than 1,500 young leaders

from across the country. In addition to the Capitol, they also visited Arlington National Cemetery, the Washington National Cathedral, several Smithsonian Museums, the U.S. Holocaust Memorial Museum, the World War II Memorial, memorials to Presidents Lincoln, Jefferson, Washington and Roosevelt, the Royal Embassy of Saudi Arabia, the National Archives, the Newseum and a number of other historical sites.

Pictured left to right are Amanda Ingram, Representative Tim Johnson and Diane Gorrell.

Office Closing

*Monday September 5, 2011
in observance of Labor Day*



Commitment to Improving System Reliability Continues

Major Construction Projects Update

In a continued commitment to increasing service reliability, several major projects and new technologies, such as the system wide smart meters, help the cooperative keep electric bills affordable by improving efficiencies. We thought it was a great time to update the membership on a few of those projects.

Brocton Sub Refurbished

Built in 1960, EnerStar's Brocton substation, located 6 miles northwest of Brocton, Illinois, was recently refurbished. The steel structure was treated for any rust and then painted and sealed. New lightning arrestors, regulators and switches,

including the high side switches, were installed. The substation is now nearly 100 percent wildlife protected to help reduce animal-related outages. The work was completed by EnerStar employees and local contractors Bolin Enterprises of Casey, Illinois. In previous years, EnerStar refurbished the Paris, Chrisman and Marshall substations. Next up for refurbishing will be Kansas and West Union substations.

Martinsville Sub Update

The new Martinsville substation was energized on March 15. Located just north of Martinsville, the substation will improve reliability

in the southwest portion of the cooperative's service territory. To reduce line outages and affect a fewer number of members, a large feeder out of the Kansas sub was separated into four different feeders and is now served by the Martinsville sub. This relieves the Kansas substation of any potential overloading, and in the near future, the new sub will provide similar relief to the Marshall and the West Union substations. When all switching and construction is completed, the Martinsville sub is built to be a workhorse and could eventually be the substation with the most electric load.



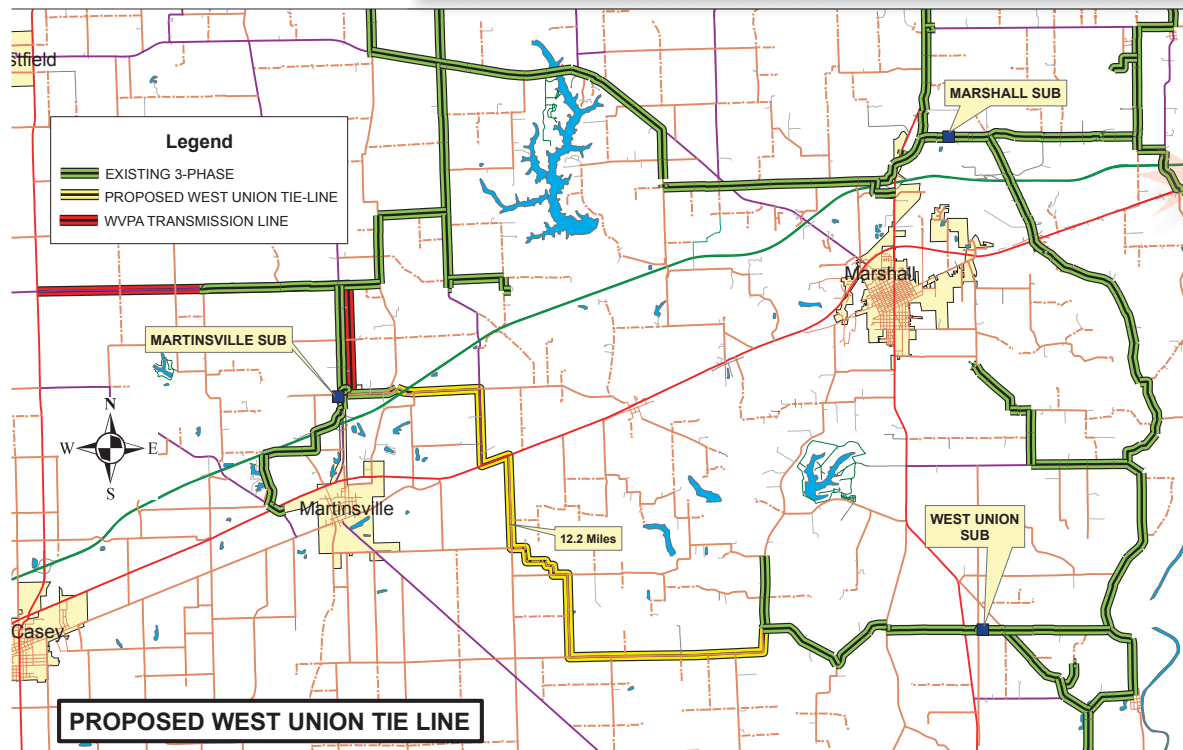
Squirrels and raccoons can cause blinking lights or power outages if they come in contact with energized wires on a pole or in a substation. Therefore, EnerStar installed wildlife guards in strategic locations within the Brocton substation.

Tie Line Construction Begins

As reported earlier, EnerStar began construction of a major 3-phase tie-line in Clark County that will connect the Martinsville substation and the West Union substation. According to EnerStar's Operations Manager Mike Clark all preliminary work, such as engineering, right-of-way clearing, and easements, is complete. One mile of the 13 mile line has been built by EnerStar crews. Clark expects outside contractors to begin work in early August on about 8 to 9 additional miles. Approximately 260 poles will be set.

A second tie-line is under consideration for the 2012 budget that will link the Martinsville substation and the Marshall substation. Once complete, the cooperative will have the ability to "back feed" any of our substations during an extended outage to lessen outage times. These two projects would improve service reliability for the entire membership.

The new Martinsville substation was energized in mid-March. The substation will improve system reliability in the southwest portion of EnerStar's service territory.



EnerStar is in beginning construction stages of two tie-lines that when complete will link all EnerStar substations. The coop will have the ability to "back feed" substations during extended outages. This will improve reliability for the entire membership.

Capital Credit Refunds from 1966 to 1968 to be mailed in August

As reported at the 2011 Annual Meeting of Members, EnerStar Electric Cooperative will issue capital credit refund checks to members who received electric service in the years 1966 to 1968. Checks will be mailed on August 15 to those who received electric service during this time period.

If you received service during these years and do not receive your refund check, please contact an EnerStar Member Services Representative at 217-463-4145 or 800-635-4145 during normal business hours of Monday through Friday, 7:30 a.m. to 4:30 p.m.

As a non-profit electric cooperative, EnerStar Electric Cooperative allocates our annual operating margins, or profits, to members receiving service during the year. These margins are based on your patronage, or usage, and are called capital credits. Capital credits are applied each year to individual capital credit accounts

and remain on file until EnerStar's board of directors determines a general refund may be issued.

Capital credit allocation notices for the prior year are generally mailed in April or May to active members. The allocation notice shows what percentage of the previous year's profits was assigned/allocated to your capital credit account. Additionally, it shows how many total capital credits you have accumulated since becoming a member, minus any general refunded amounts.

The EnerStar board of directors, fellow cooperative members who are democratically elected at the annual meeting to serve on the board, has adopted the following policies governing the refund of capital credits accrued.

General Refund: General refunds, which may be made from time to time, are determined by the board of directors and are based on the

cooperative's financial condition.

Estate Retirements: The only way an account can be retired or refunded in full is upon the death of a member. In the case of a joint membership, both parties must be deceased before any capital credit refunds will be made. Please note, upon death of the member(s), capital credits on a deceased member's account will be forfeited after 12 months. Please contact the cooperative and change the account to a new membership so the capital credits will not be forfeited.

It is important to point out that capital credits are your equity in the cooperative. They do not bear interest. They are not credits to your billing account and cannot be used toward payment of electric bills.

For information on capital credits, contact Susan Watson at 217-463-4145 or 800-635-4145, extension 109 or via email at swatson@enerstar.com.

Congratulations!

*Congratulations
EnerStar Employees
for reaching 1000
days of "no lost
time accidents."*

Good job!

Stay safe!



EnerStar E-Bill

Click. Pay. Relax.

- Pay bills securely online!
- Access payment and billing history!
- View consumption history!
- Go paperless!

Illinois Electric Cooperatives at Farm Progress Show in Decatur

EnerStar members attending the Farm Progress Show on Aug. 30, 31, and Sept. 1, should make plans to visit the Touchstone Energy exhibit in the Varied Industries Tent. There you will learn energy efficiency measures that will save you money each month on your energy bill. The Farm Progress Show is held in Decatur, Ill. every other year.

We encourage you to stop by and check out the “Energy Efficiency Wall” and pick up your free gift. There will also be a special gift when you present your Coop-Connections card. What?! You don’t have a Connections card or lost yours? Contact EnerStar to get a new one!

The Illinois Touchstone Energy Cooperatives will also be sponsoring the Kyle Finley’s Live Line Demo, an electrical safety demonstration featuring 7,200 volts of electricity! This program is great for kids and adults. It’s an experience your family will not want to miss. Live Line Demo will be located just outside the Varied Industries Tent on Junior Lot #450. Visit www.liveline demo.com to learn more about Kyle or to get program highlights.

Adding to the festivities, the Touchstone Energy Hot Air Balloon will make an appearance flying the American flag each morning. If weather permits, the balloon will do a late afternoon flight as well.

The Varied Industries Tent runs the length of Fifth and Fourth Progress Street and is in between West Progress and Central Progress Avenue. The Touchstone Energy Cooperatives Exhibit will be on the end cap just inside the entrance/exit on Central Progress Avenue.

For more information, check out our ad in the Prairie Farmer Magazine to learn more about the 2011 Farm Progress Show or visit www.farmprogressshow.com.

Hope to see you there!



Illinois electric cooperatives to purchase 40 megawatts of wind power

Three generation and transmission (G&T) cooperatives, serving 21 Illinois electric cooperatives and their 540,000 members, announced they will be purchasing 40 megawatts of wind energy from the Pioneer Trail Wind Farm. The wind farm is under development east of Paxton, Ill.

The member-owned G&Ts, Prairie Power, Inc., Southern Illinois Power Cooperative and Wabash Valley Power Association are entering into an 18-year power purchase agreement with E.On Climate & Renewable North America, Inc. The agreement was coordinated through the National Renewables Cooperative Organization (NRCO), which was formed to promote and facilitate the development of economically viable renewable energy resources for its member cooperatives across the United States.

Based out of Indianapolis, Wabash Valley Power Association is a member of the NRCO. WVPA provides wholesale electricity to 28 electric distribution cooperatives in Indiana, Michigan, Missouri, Ohio, and Illinois, including EnerStar Electric Cooperative. EnerStar serves the mostly rural areas of Clark, Edgar, Vermilion, Douglas, and Coles counties in Illinois. Representing EnerStar on the WVPA board of directors is EnerStar board member Don Baggs of Marshall and EnerStar CEO Peter E. Kollinger.

Amadou Fall, CEO of NRCO, praised the three member G&Ts as examples of the cooperative principles that guide the organizations. "In keeping with the NRCO model, these cooperatives have come together to leverage buying power on behalf of their customers. This project is yet another example of how NRCO helps its members interact in the marketplace for the benefit of all."



Commitment to renewable energy continues: Wabash Valley Power has signed an agreement to purchase 10 MW of electricity from a wind farm near Paxton, Illinois.

Rick Coons, CEO of Wabash Valley Power, said the purchase agreement illustrates the commitment made by electric cooperatives to provide affordable, reliable energy while continuing to support alternative fuel sources.

"Working with NRCO has facilitated our ability to find alternative energy projects that meet the economic standards we've established,"

explained Rick. "We are committed to expanding our alternative energy resources, but we have to do so in a manner that is still affordable for the co-op members who count on us."

The project is expected to create 200 construction jobs, 10 full time jobs, and more than \$1.6 million in tax revenue to support the local county and school system.

Fast Facts on

Pioneer Trail Wind Farm

- 94 turbines will generate 150.4 Megawatts of renewable wind generation
- Each turbine is 400 foot tall but occupies less than 2 acres of land
- Wind farm will provide power to about 45,000 households
- Turbines located in the eastern Illinois counties of Ford and Iroquois
- Project encompasses more than 12,000 acres of land
- Investors include Prairie Power, Southern Illinois Power Company and Wabash Valley power who is EnerStar's wholesale power provider
- Operation should begin by the end of 2012
- Generating power with wind instead of fossil will annually prevent more than 316,000 tons of CO2 emissions

Insulating Your Attic: More Is Better

We often get asked by our members, is there enough insulation in my attic? All too often, the answer to that question is no especially in older homes.

But that can easily be remedied. By adding insulation to your attic, you can improve your home's energy efficiency and save money by reducing your energy consumption.

With adequate attic insulation, your home's heating/cooling system will operate more efficiently. It will keep you cooler in the summer and warmer in winter—and it will keep more money in your wallet sometimes as much as \$200 a year.

“Before adding insulation to your attic, determine how much insulation is already installed, what kind it is, and how thick it is,” said Tim Haddix, EnerStar's System Engineer and Energy Advisor. “Next, you'll need to know the R-value—which indicates the insulation's resistance to heat—of existing attic insulation. The higher the R-value, the greater the insulating effectiveness.” Once you know the R-value, you can determine how much insulation to add. For our Illinois climate, Haddix recommends at least an R-value of at least 50.

Now you're ready to decide what kind of insulation to install: loose-fill or blanket (batt and roll) insulation. Loose-fill insulation consists of small particles of fiber, foam, or other materials. Blanket insulation, the most common and widely available type of insulation, comes in the form of batts and rolls made from mineral wool, plastic fibers, and natural fibers. “Loose-fill insulation is usually less expensive to install than batt insulation,” said Haddix. “We prefer loose-fill insulation because when properly installed, it can provide better coverage.”

For other tips on how to save energy and money visit Touchstone Energy® Cooperatives energy-saving website, www.TogetherWeSave.com, or call Haddix at 1-217-466-7617 or 800-635-4145, extension 117.



Energy Efficiency

Tip of the Month

Is your washing machine more than 10 years old? According to the U.S. Department of Energy, families can cut related energy costs by more than a third—and water costs by more than half—by purchasing a clothes washer with an ENERGY STAR label. Choose a front-load or redesigned top-load model.

Source: U.S. Department of Energy

Reinventing the incandescent light bulb

For the first time in more than 100 years, the basic incandescent light bulb is getting a facelift. To accommodate new energy efficiency standards set by Congress (which require light bulbs to be more efficient starting in 2012), a new generation of incandescent light bulbs has entered the marketplace. These products boast energy savings of 25 percent and a lifespan up to three times longer than their soon-to-be extinct predecessors.

“Up to 10 percent of a typical monthly electric bill pays for lighting, so removing energy-wasting bulbs from the market will have a big impact on America’s energy use,” explains Erik Sorenson, a project manager with the National Electrical Manufacturers Association (NEMA).

Retooled incandescent bulbs contain a small capsule of halogen gas that surrounds the filament, which increases efficiency and improves longevity, while retaining the shape,



color choices, and dimming capabilities that consumers have favored in incandescent bulbs.

Under the federal Energy Independence and Security Act of 2007, light bulbs must be 28 percent more efficient than traditional incandescent bulbs (which use 90 of their energy producing heat) starting in 2012, and by 2020, they must be 70 percent more efficient. NEMA

estimates the new standards could save Americans up to \$15.8 billion per year.

On a related note, the new generation incandescent bulbs will join compact fluorescent light bulbs (CFLs) and light-emitting diodes (LEDs) as energy-efficient lighting options. CFLs and LEDs both are about 75 percent more efficient than traditional incandescent bulbs. CFLs last about 10 times longer while LEDs last about 25 times longer. But CFLs are the more economical choice at the moment. The cost of LEDs is expected to come down as the technology advances.

What Are My Lighting Options?

Starting in 2012, lightbulbs must be more energy efficient.

The three most common bulb options consumers will find on store shelves are:

- Halogen incandescents**
 Energy Savings:* 25 percent
 Lifespan:* Three times longer
 Annual Energy Cost: \$3.50
- Compact Fluorescent Lamps (CFLs)**
 Energy Savings:* 75 percent
 Lifespan:* 10 times longer
 Annual Energy Cost: \$1.20
- Light-emitting diodes (LEDs)**
 Energy Savings:* 75-80 percent
 Lifespan:* 25 times longer
 Annual Energy Cost: \$1

*As compared to traditional incandescent bulbs

Learn more at energysavers.gov/lighting

EnerStar[®] Mission statement

EnerStar Electric Cooperative exists to reliably distribute affordable electricity to its member-owners while upholding our values of integrity, accountability, and commitment to our community.